

# LIBRARY

Department of Biodiversity,  
Conservation and Attractions

This PDF has been created for digital preservation. It may be used for research but is not suitable for other purposes. It may be superseded by a more current version or just be out-of-date and have no relevance to current situations.

## REMEMBER

**Stay Cool:** Don't light fires. Gas barbeques are provided free of charge at Mylies, Point Ann, Quoin Head, Fitzgerald Inlet and Four Mile and St Mary campsites.

**Be Clean:** Please take your litter with you.

**Save Animals and Plants:** No firearms or pets are permitted in the park.

**Stay on the Road:** Follow signs in the Park, and keep vehicles to the roads marked in this leaflet. Observe track closures and speed limits. To drive 4WD on sand engage 4WD and reduce tyre pressure. It is recommended that 2WD vehicles not be driven on sand or other soft surfaces. Don't forget to reinflate tyres when you leave the area.

**Be Prepared:** Always carry plenty of fresh water (at least four litres per person per day) as there are no reliable water supplies within the Park.



## FURTHER INFORMATION

National Park Rangers are always glad to make your visit more enjoyable and informative. Don't hesitate to contact them if you want information or assistance.



**RANGER IN CHARGE**  
Fitzgerald River National Park  
PO BOX 33  
Jerramungup 6337  
Tel: (08) 9835 5043 Fax: (08) 9835 5045

**RANGER**  
Eastside (East Mt Barren)  
Tel: (08) 9838 3060

**RANGER**  
Westside (Murray Road)  
Tel: (08) 9837 1022

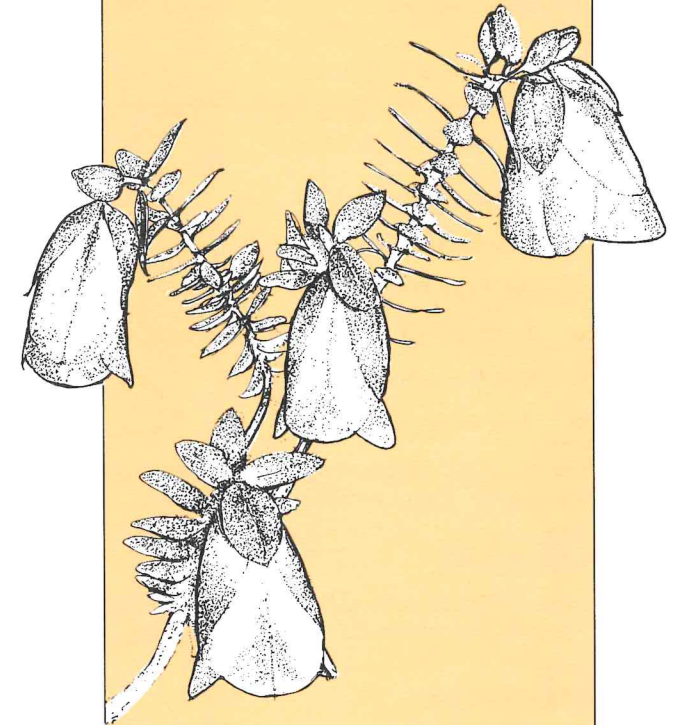
**ALBANY REGIONAL OFFICE**  
44 Serpentine Road  
Albany 6330  
Tel: (08) 9842 4500

## TAKE CARE

Caution is required in any natural environment with potentially hazardous terrain, and the Fitzgerald River National Park is no exception. Rip tides are common along the coastline, so care is required when selecting a suitable swimming area. Many areas within the park have steep, rocky slopes and much of the rock is loose and crumbly; so please be careful.

# FITZGERALD RIVER

## National Park



Fitzgerald River National Park covers an area of 329 039 ha and lies on the central south coast of Western Australia, between the towns of Bremer Bay and Hopetoun, 420 km south-east of Perth.

It is one of the largest and most botanically significant national parks in Australia, with approximately 20 per cent of the State's described plant species.

The Park is managed by the Department of Conservation and Land Management on behalf of the Conservation Commission. There are three Rangers resident in Fitzgerald River National Park, and a Management Plan current to the year 2001 exists for the Park.

## MAN AND THE BIOSPHERE



The Fitzgerald River National Park is also an internationally recognised Biosphere Reserve under the UNESCO Man and the Biosphere Program. This is a protected area large enough to serve as a base line for evaluating changes in the environment at both local and global levels.

The Park protects magnificent scenery and is one of the most flora-rich conservation areas in Western Australia. So far, 1 784 plant species have been identified, 75 of which are found nowhere else. More kinds of animals also live in this National Park than in any other reserve in south-western Australia. They include 22 mammal species, 41 reptiles and 12 frogs. The 184 bird species found in the Park include rare species like the ground parrot, western bristle bird and western whipbird.

## DIEBACK

Dieback is a plant disease caused by microscopic fungi (Phytophthora spp.). There are many different types of Phytophthora species, all of which are lethal to hundreds of plant species. These introduced fungi kill plants by destroying their root systems, and place many of the Park's plant species at risk. The climate of the south coast favours the spread of dieback, which thrives in warm, moist soil and can easily be spread in mud or soil that adheres to vehicle tyres or bushwalkers' footwear.

The Fitzgerald River National Park is possibly one of the least infected parks in south-western Australia, and with your help it has a chance of remaining so.

Because vehicles and walkers unwittingly cause the spread of dieback, it is sometimes necessary to close roads and tracks or restrict access to certain areas. When driving in Fitzgerald River National Park, it is essential to keep to established roads and tracks and obey all 'ROAD CLOSED' signs. Please clean your shoes and boots before bushwalking and wash the underbody of vehicles and their tyres to help preserve this magnificent National Park.

## ACCESS

Two major gravel roads, Hamersley Drive and Pabelup Drive, provide suitable access for conventional 2WD vehicles.

Entry fees apply.

### FROM THE EAST

The Park is entered via Hamersley Drive and Hopetoun or from the north via West River Road. Hamersley Drive is a scenic drive offering excellent views into the heart of the Park, as well as access to several beaches such as Mylies, Barrens, West and Four Mile.

Several of the tracks are only accessible by 4WD vehicles. These are the Whale Bone Beach Track, Quoin Head Track and the Moir Track.

### FROM THE WEST

Pabelup Drive is the major loop in the western section of the Park and can be reached from Highway One via Devils Creek Road in the west or Quiss Road in the north.

Points of interest that are accessible by conventional 2WD vehicles are Mt Maxwell, West Mt Barren, Point Ann and, with care, Twertup. The 4WD access tracks are to Fitzgerald Inlet and Trigelow Beach.

### Please note:

Roads within Fitzgerald River National Park are not suitable for caravan access. However, caravans are allowed into Quaalup from the west.

Buses larger than 20-seaters are only permitted to East Mt Barren car park from the east, and Quaalup from the west. Buses with 20 seats or less are allowed to West Mt Barren, Point Ann and Mylies Beach.





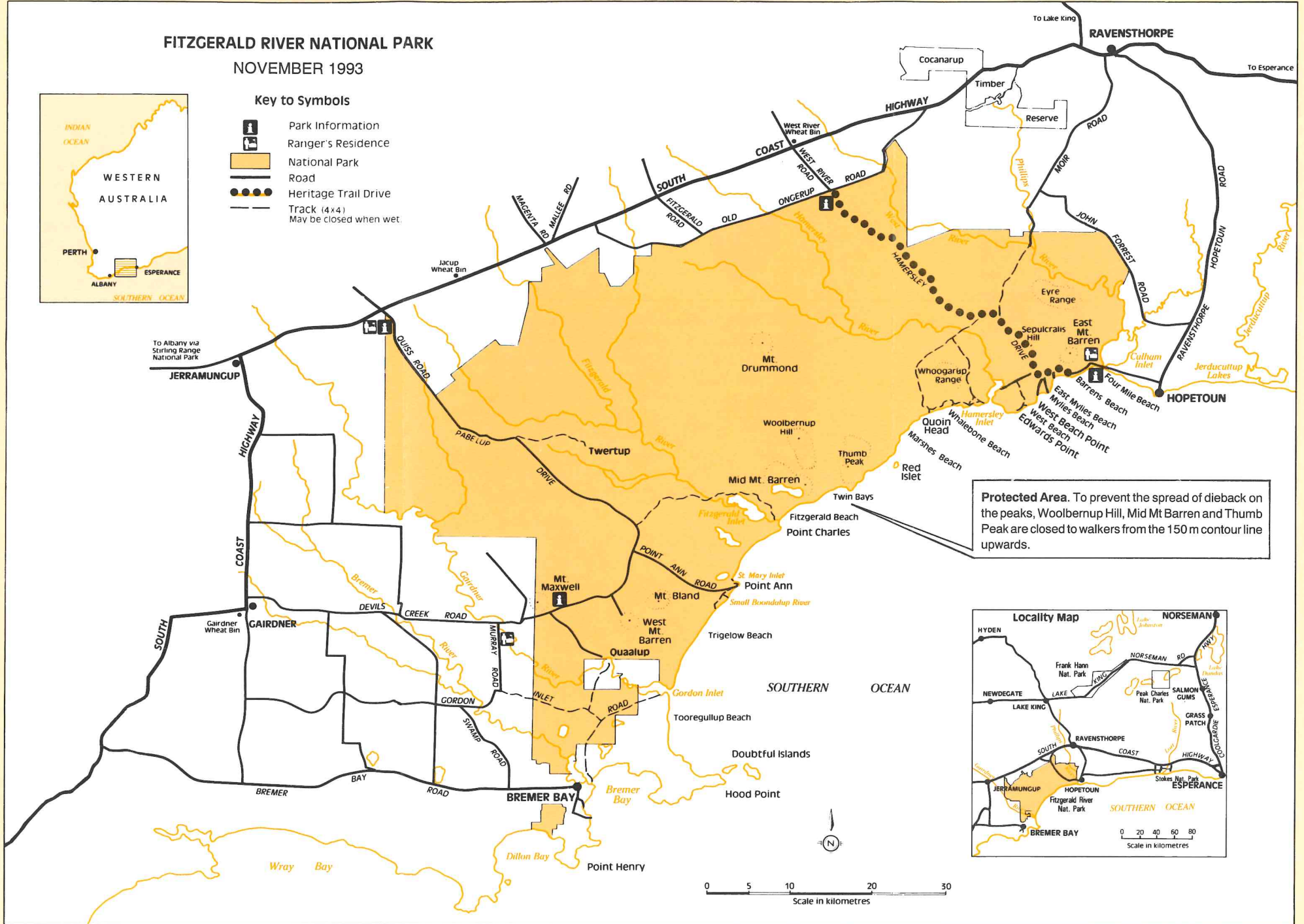
# FITZGERALD RIVER NATIONAL PARK

NOVEMBER 1993

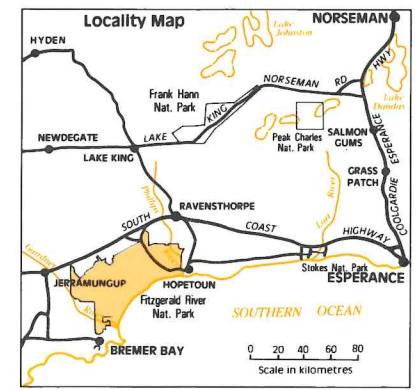


## Key to Symbols

- Park Information
- Ranger's Residence
- National Park
- Road
- Heritage Trail Drive
- Track (4x4)  
May be closed when wet.



**Protected Area.** To prevent the spread of dieback on the peaks, Woolberup Hill, Mid Mt Barren and Thumb Peak are closed to walkers from the 150 m contour line upwards.



## THINGS TO DO AND SEE

Diverse landscapes, protected beaches, rugged sea cliffs, steep ranges, extensive plains and abrupt river valleys ending in inlets all provide a variety of recreation opportunities based on natural settings.



### WILDFLOWERS

Wildflowers are most abundant in the spring. However, there are always some flowers in bloom throughout the year.



### WHALE WATCHING

From August to November whales can often be viewed along the coast.



### BUSHWALKS

- ❖ West Mount Barren - allow 1-2 hours
- ❖ Point Ann Heritage Trail - 1 hour
- ❖ Twertup "Horrie and Dorri" - 1-2 hours
- ❖ East Mount Barren - 3 hours
- ❖ West Beach Point - 1 hour.

Please contact a Ranger to register for overnight walks or for further details on other walks



### FISHING

Fitzgerald River National Park has many excellent fishing beaches. Normal fishing regulations apply.



### CAMPING

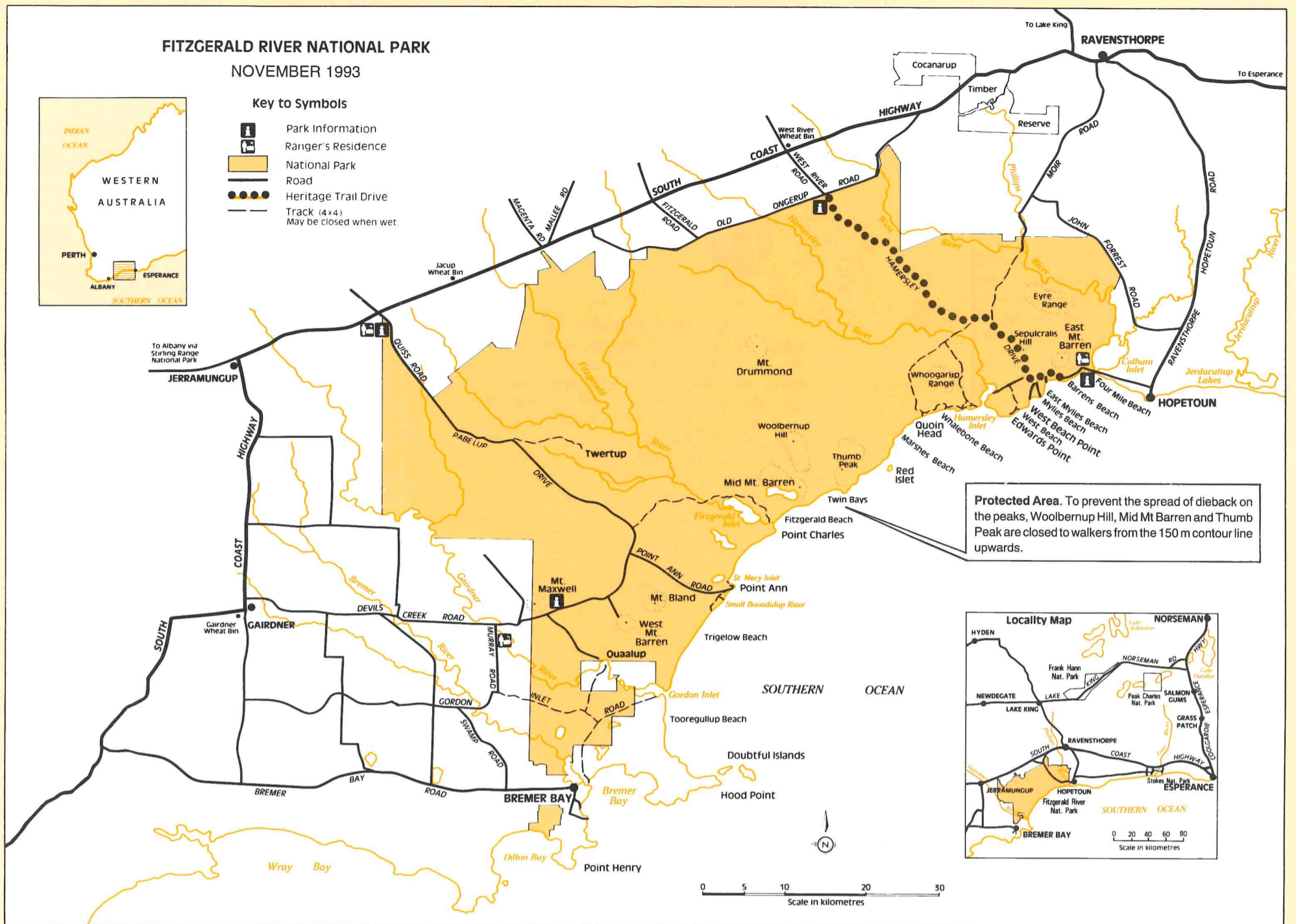
Vehicle-based camping is available at Four Mile Beach, Hamersley Inlet, Quoin Head, Fitzgerald Inlet and Saint Mary Inlet. Please check map for locations.

Camping fees apply.

RECREATION SITES ARE CURRENTLY BEING IMPROVED SEE RANGER FOR DETAILS	ROADS & TRACKS	DAY USE	CAMPING	BEACH AND WATER ACCESS	POPULAR ACTIVITIES											
	2WD ROAD/TRACK	4WD TRACK (MAY BE CLOSED WHEN WET)	SCENIC OUTLOOK	PICNIC/GAS BBQ	TOILETS	CAMPSITE	GROUP CAMPING	BACKPACK CAMPING	FOOT ACCESS TO BEACH	4WD ACCESS TO BEACH	BOAT LAUNCH	WALKING	FISHING	WHALE WATCHING	NATURE STUDY	
<b>INLAND SITES</b>																
EAST MT BARREN LOOKOUT	•		•											•	•	
EAST MT BARREN FOOTPATH	•		•	PICNIC ONLY							•				•	
HAMERSLEY RIVER CROSSING		•									•					
SEPULCRALIS HILL	•		•	PICNIC ONLY							•				•	
NO TREE HILL			•								•				•	
TWERTUP		•	•	•	•						•				•	
WEST MT BARREN FOOTPATH	•		•	PICNIC ONLY							•				•	
MT MAXWELL	•		•								•				•	
<b>COASTAL SITES</b>																
FOUR MILE BEACH	•			•	•	•		•			•	•	•			
BARRENS BEACH	•							•				•	•			
EAST MYLIES BEACH	•							•				•	•			
WEST BEACH POINT	•		•													
EDWARDS POINT		•														
HAMERSLEY DUNES		•							•			•			•	
HAMERSLEY INLET	•			•	•	•		•	•		•	•	•		•	
HAMERSLEY INLET Ravensthorpe Shire Reserve	•			PICNIC ONLY	•	•					•	•			•	
WHALE BONE BEACH		•	•					•	•		•	•	•	•	•	
QUOIN HEAD		•	•	•	•	•		•	•		•	•				
FITZGERALD BEACH		•							•			•	•		•	
FITZGERALD INLET		•		•	•	•		•	•	•	•	•			•	
ST MARY INLET	•			•	•	•	•	•	•	•	•	•	•	•	•	•
POINT ANN	•		•	•	•			•	•	*	•	•	•			
SMALL BOONDALUP RIVER		•						•	•							
TRIGELOW BEACH		•							•			•				

\* For boats less than 3 metres  
Seasonal closure to protect whales June to October





## THINGS TO DO AND SEE

Diverse landscapes, protected beaches, rugged sea cliffs, steep ranges, extensive plains and abrupt river valleys ending in inlets all provide a variety of recreation opportunities based on natural settings.

### WILDFLOWERS

Wildflowers are most abundant in the spring. However, there are always some flowers in bloom throughout the year.

### WHALE WATCHING

From August to November whales can often be viewed along the coast.

### BUSHWALKS

- ❖ West Mount Barren - allow 1-2 hours
- ❖ Point Ann Heritage Trail - 1 hour
- ❖ Twertup "Horrie and Dorri" - 1-2 hours
- ❖ East Mount Barren - 3 hours
- ❖ West Beach Point - 1 hour.

Please contact a Ranger to register for overnight walks or for further details on other walks

### FISHING

Fitzgerald River National Park has many excellent fishing beaches. Normal fishing regulations apply.

### CAMPING

Vehicle-based camping is available at Four Mile Beach, Hamersley Inlet, Quoin Head, Fitzgerald Inlet and Saint Mary Inlet. Please check map for locations.

Camping fees apply.

RECREATION SITES ARE CURRENTLY BEING IMPROVED SEE RANGER FOR DETAILS	ROADS & TRACKS	DAY USE	CAMPING	BEACH AND WATER ACCESS	POPULAR ACTIVITIES										
	2WD ROAD/TRACK	4WD TRACK (MAY BE CLOSED WHEN WET)	SCENIC OUTLOOK	PICNIC/GAS BBQ	TOILETS	CAMP SITE	GROUP CAMPING	BACKPACK CAMPING	FOOT ACCESS TO BEACH	4WD ACCESS TO BEACH	BOAT LAUNCH	WALKING	FISHING	WHALE WATCHING	NATURE STUDY
<b>INLAND SITES</b>															
EAST MT BARREN LOOKOUT	•	•												•	•
EAST MT BARREN FOOTPATH	•	•	PICNIC ONLY											•	•
HAMERSLEY RIVER CROSSING	•	•												•	•
SEPULCRALIS HILL	•	•	PICNIC ONLY											•	•
NO TREE HILL		•												•	•
TWERTUP		•	•	•	•									•	•
WEST MT BARREN FOOTPATH	•	•	PICNIC ONLY											•	•
MT MAXWELL	•	•												•	•
<b>COASTAL SITES</b>															
FOUR MILE BEACH	•	•	•	•	•			•						•	•
BARRENS BEACH	•	•						•						•	•
EAST MYLIES BEACH	•	•						•						•	•
WEST BEACH POINT	•	•												•	•
EDWARDS POINT		•												•	•
HAMERSLEY DUNES		•							•					•	•
HAMERSLEY INLET	•	•	•	•	•			•						•	•
HAMERSLEY INLET Ravensthorpe Shire Reserve	•	•	PICNIC ONLY	•	•			•						•	•
WHALE BONE BEACH	•	•						•	•					•	•
QUOIN HEAD	•	•	•	•	•			•						•	•
FITZGERALD BEACH	•	•							•					•	•
FITZGERALD INLET	•	•	•	•	•			•						•	•
ST MARY INLET	•	•	•	•	•			•						•	•
POINT ANN	•	•	•	•	•			•		•				•	•
SMALL BOONDALUP RIVER	•	•						•	•					•	•
TRIGELOW BEACH	•	•							•					•	•

\* For boats less than 3 metres  
Seasonal closure to protect whales June to October