

## Bookings and Enquiries

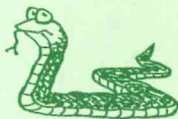
### First book by phone

Phone The Hills Forest Activity Centre weekdays between 8.30 am and 1.30 pm on (08) 9295 6149 or fax on (08) 9295 3247.

**Note:** For Catchment Carers' Trail bookings phone or fax the C.Y. O'Connor Museum between 9.30 am and 3.00 pm on (08) 9295 2455.

### Confirmation letter

A confirmation letter with details of your PD day, excursion or activity will then be forwarded to you.



### Send your payment

Please make cheques payable to: *Exploring The Hills Forest* Program and send to:

*Exploring The Hills Forest Programs*  
CALM, The Hills Forest,  
Mundaring Weir Rd.,  
MUNDARING WA 6073

### Cancellations

Please phone then confirm your cancellation in writing at least one week prior to your visit.

### Find out more

Teachers can find out about all CALM's educational programs in the 'For Schools' section of the NatureBase internet site at <http://www.calm.wa.gov.au>



*Get involved . . . with The Hills Forest*



Department of Conservation and Land Management



Primary school teachers explore

## The Hills Forest

with your students in 1999



**'Exploring The Hills Forest'** environmental education programs are based in the jarrah forest near Mundaring. They provide classroom resources for the new curriculum framework and many excursion opportunities.

PAM04961



Department of Conservation and Land Management

## 1 Discovering The Hills Forest For Years 6 and 7

This program explores the jarrah forest ecosystem and provides an opportunity for students to encounter some of the forest's specialised mammals.

### What a teacher had to say about the program:

*This excursion and resource package linked perfectly with our work on Primary Investigations and with the First Steps approach to teaching English. Thanks.—Barbara*

### What's involved

#### ○ Teacher Professional Development (PD) day in the forest

This gives teachers an overview of our programs, a resource package and some experience of the activities students will encounter during excursions.

#### ○ Pre-visit and post-visit activities at school

Teachers use the resource package to prepare students for the excursion and follow up afterwards.

#### ○ Students' excursion

A one-day field trip into the forest which includes an animal encounter session. Students are led by CALM staff and environmental educators.



#### ○ Student numbers

Minimum 25  
Maximum: 1 class

#### ○ Cost

PD day: \$35.00 per teacher (includes lunch and resource package)  
Excursion: \$6.00 per student

#### ○ Time

Excursion: 10.00 am to 2.00 pm

#### ○ When

PD days: (see dates under Professional Development '99)  
Excursions: weekdays, 2nd March to 11th November

## 2 Catchment Carers' Trail For Years 5, 6 and 7

A learning program about the water cycle, catchments and water resource management run jointly by CALM and the Water Corporation.

### What teachers had to say about the program:

*Overall it was a excellent learning experience and covers aspects of Society and Environment, including history, and Science.—Ian*

*The excursion was worth 20 classroom lessons; very professionally run.—Suzanne*

### What's involved

#### ○ Teacher and Student Resource Notes

A booklet of notes will be forwarded to teachers who book the trail excursion. A PD day is recommended.

#### ○ Pre and post-visit activities at school

Teachers may use the notes to prepare students for the excursion and follow-up afterwards.

#### ○ Students' excursion

A one-day field trip which includes:  
An interactive walk trail, focusing on issues such as salinity, erosion, nature conservation and the water cycle.  
A tour of the Mundaring Weir, its history and use as part of an integrated water system.  
A visit to the C.Y. O'Connor Museum.

#### ○ Student numbers

Minimum: 1 class of 25 students or two classes of 50 students

#### ○ Cost

Excursion: \$4.50 per student (includes entry to C.Y. O'Connor Museum)

#### ○ Time

9.45 am to 2.00 pm

#### ○ When

Weekdays, except Tuesdays  
Terms 2 and 3 and Term 4  
until 12th November.

#### ○ Bookings

Phone or fax the C.Y. O'Connor Museum (08) 9295 2455 weekdays (except Tuesdays) 9.30 am to 3.00 pm





## 3 Threatened Species Program For Years 5, 6 and 7

### New!! Threatened Species Excursion

A program raising student awareness of Western Australia's threatened species and current CALM projects aimed at preventing further extinctions.

#### What's involved

- **Western Shield Action Pack for pre and post-visit activities**

This Action Pack will be forwarded to teachers who book the excursion. The pack contains teacher notes, resource sheets and activity sheets for classroom work, and suggestions for extension activities that link with the curriculum.

The Action Pack is also available in the 'For Schools' section of CALM's NatureBase internet site at <http://www.calm.wa.gov.au>

- **Students' excursion**

A one-day field trip which includes:

A hands-on session participating in CALM's research methods.

A tour of The Hills Forest's new animal habitat project.  
A close encounter with threatened and other forest animals.

- **Student numbers**

Minimum: 1 class of 25 students or two classes of 50 students

- **Cost**

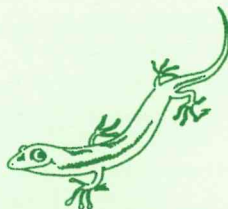
Excursion: \$6.00 per student

- **Time**

10.00 am to 2.00 pm

- **When**

Weekdays



Win!!

## A 'Night out with the woylies' or a free Threatened Species Excursion

Classes that complete the activities can enter a draw to win a 'Night out with the woylies' or one of four excursions (see details on previous panel).

The winners will participate in a camp at The Hills Forest Activity Centre. They will set and check traps, visit the viewing hide deep in the jarrah forest and meet some threatened species.

#### What teachers had to say about the program:

*The Action Pack, attending the camp and the follow-up Powerpoint presentations from the students was the most worthwhile exercise my Year 7 class has done all year.—Vic*

*The camp was a tremendous finale to our year and gave a true sense of realism to our studies on conservation.—Chris*

#### What's involved

- **Western Shield Action Pack**

Packs are available free from CALM:  
phone (08) 9334 0437.

- **Student numbers**

One class of students

- **Time for camps**

4.00 pm to 9.30 am following day

- **When**

November or December



#### Country schools

##### Manjimup, Bunbury and Dryandra areas

Win a 'Night out with the possums, wallabies or numbats'

Classes that complete the activities in the Action Pack can enter a draw to win a camp at the Perup Forest Ecology Centre, Batalling Field Ecology Centre or Dryandra Woodland Ecology Centre.

Enquiries: Tel: (08) 9334 0387 or fax: (08) 9334 0498

# 4 Forest walks and activities For Years 1 to 7

Year-round excursion activities to suit your needs focusing on the forest environment, plants, birds, reptiles and invertebrates and led by experts in each of the fields.

## What's involved

Teachers choose one or more of the activities listed below to make up an excursion day or to enrich a school camp.



### ○ Reptilian Reality (Years 4 to 7)

A chance to look for reptiles in the wild and then to touch a real live skink, snake or dragon lizard back at the Centre.

**Duration:** 2 hour

**Cost:** \$3.50 per student

**Minimum:** 25 students

**Maximum:** 1 class

### ○ Marsupial Encounters (Years 1 to 7)

Meet some forest marsupials and find out how injured animals are rehabilitated by wildlife carers.

**Duration:** 1 hour

**Cost:** \$3.00 per student

**Minimum:** 25 students

**Maximum:** 1 class

### ○ Papermaking (Years 1 to 7)

Learn to make recycled paper using natural bush products. It's a hands-on activity that's fun and environmentally friendly.

**Duration:** 2 hours

**Cost:** \$4.00 per student

**Minimum:** 25 students

**Maximum:** 1 class



### ○ Nightlife (Years 3 to 7)

Bring your torches, walk through the forest under the stars and discover its nightlife. Make this part of your camp at The Hills Forest camp ground.

**Duration:** 1.5 hours or 2 hours

**Cost:** \$3.00 per student;  
\$4.00 per student includes animal encounter session

**Minimum:** 25 students

**Maximum:** 1 class

### ○ The Underworld (Years 1 to 7)

A hands-on experience looking for signs of the bustling underworld of our jarrah forest; students see and learn about the lives of beetles, bugs, spiders ants, scorpions, earwigs, mantises and many more.

**Duration:** 1 hour or 2 hours

**Cost:** \$2.00 (1h session) or \$3.00 (2h session)

**Minimum:** 25 students

**Maximum:** 1 class

### ○ Splendid Spiders (Years 1 to 7)

Learn to value our amazing arachnids by taking a safe journey to see wolf, trapdoor, orb and leaf curling spiders.

**Duration:** 1 hour or 2 hours

**Cost:** \$2.00 (1h session) or \$3.00 (2h session)

**Minimum:** 25 students

**Maximum:** 1 class



### ○ Forest Frogs (Years 1 to 7)

Under the guidance of local experts learn where to find our forest amphibians.

**Duration:** 2 hours

**Cost:** \$3.50 per student

**Minimum:** 25 students

**Maximum:** 1 class

**When:** 1st June to 24th September

### ○ Sense-ational Trail (Years 1 to 7)

Using blindfolds explore the forest along our rope walk using your sense of smell, touch and hearing.

**Duration:** 1 hour

**Cost:** \$2.00 per student

**Minimum:** 25 students

**Maximum:** 1 class





## 5 *Busy in the forest* *For Early Childhood, Years 1 to 3*

A forest excursion that links with CALM's Early Childhood Forest Pack for the classroom. Includes a sensory trail and an opportunity for students to meet some furry, forest creatures.

### **What teachers had to say about the program:**

*The most delightful excursion I have ever been on. I will use it every year.—Anna*

*An outstanding excursion. The pace was just right with a mixture of mystery, fun and exploration. We'll be booking again next year!—Mary*

### **What's involved:**

- **Teacher PD day in the forest**  
Attendance at a PD day is essential. It provides teachers with a forest resource pack, an overview of the day and a chance to experience some of the excursion activities.
- **Pre-visit and post-visit activities at school**  
Teachers prepare students for the excursion and follow up afterwards using CALM's Forest Pack, 'A forest is a very busy place'.
- **Students' excursion**  
Activities include a sensory, blindfold rope-walk trail, a 'treasure' trail and an animal encounter session.
- **Student numbers**  
Minimum: 25 students (1 class) or 50 students (2 classes)
- **Cost**  
PD day: \$35.00 per teacher (includes lunch and Forest Pack)  
Excursion: \$6.00 per student  
Forest Packs: \$10.00 each, if not attending PD day (To order phone (08) 9334 0437)
- **Time**  
10.00 am to 2.00 pm
- **When**  
PD days: (see dates under Professional Development '99)  
Excursions: Weekdays, Terms 2 and 3



## 6 *Aboriginal Culture Excursions* *(ACE) For Years 4 to 7*

Join leaders from CALM's Aboriginal Tourism, Education and Training Unit to explore traditional Aboriginal culture in the jarrah forest. Excursion content links with the Education Department's Aboriginal Studies materials.

### **What teachers had to say about the program:**

*Fantastic hands-on activities, complemented our class work and the Aboriginal Studies curriculum materials.—Claire*

*The children learnt the importance of respect for other cultures. Thanks.—David*

### **What's involved**

- **Teacher PD day in the forest**  
Attendance at a PD day is not compulsory but it is advisable.
- **Pre-visit and post-visit activities at school**  
Teachers prepare students for the excursion and follow up afterwards using the Education Department's Aboriginal Studies materials.
- **Students' excursion**  
Activities include a forest walk exploring traditional use of plants and animals, stories of The Dreaming, language and artefact making; all with an emphasis on student participation.
- **Student numbers**  
Minimum: 25 students (1 class) or 50 students (2 classes)
- **Cost**  
PD day: \$35.00 per teacher (lunch included)  
Excursion: \$6.00 per student
- **Time**  
PD day: 9.00 am to 2.30 pm  
Excursion: 10.00 am to 2.00 pm
- **When**  
PD days: (see dates under Professional Development '99)  
Excursions: Wednesdays



## Professional Development '99

The Hills Forest PD days are a good way for teachers to familiarise themselves with the range of CALM educational resources and opportunities offered at The Hills Forest Activity Centre. They help teachers make the most of their visit to the forest.

### What teachers had to say about the PD:

*Your PD early in the year gave me inspiration and invaluable material on which I could plan my teaching. For most of the year I have been able to draw on different CALM resources and activities at The Hills Forest. Thankyou.*  
—Chris

*The content was relevant across the board, Years 1 to 7. Thanks for an excellent day.*—David (Principal)

NOTE: The Discovering The Hills Forest for Years 6 and 7 and Busy in the forest for Early Childhood students are offered to those teachers who have attended a PD day. However, a PD day is advisable for other programs.

#### ○ Provides:

An overview of excursion opportunities;  
Experience of some excursion activities for students;  
A review of CALM educational packages and resources;  
A tour of the jarrah forest and discussion of forest management with a CALM officer;  
Lunch.

#### ○ Dates for Exploring The Hills Forest PD

Term 1: Saturday 6th March  
Term 2: Saturday 24th April, Saturday 29th May  
Term 3: Saturday 24th July

#### ○ Dates for Aboriginal Culture Excursions (ACE) PD

Term 1: Saturday 27th March  
Term 2: Saturday 12th June

#### ○ Cost

\$35.00 per teacher and  
\$25.00 per student  
teacher (includes lunch  
and relevant resources)

#### ○ Time

Exploring The Hills Forest PD:  
9.00 am to 3.30 pm  
ACE PD: 9.00 am to 2.30 pm



## Whole school staff PD

This is available to schools on request. The Centre provides a pleasant environment, away from school where teachers can get to know their colleagues. The day will enrich their teaching programs.

#### ○ Cost

\$30.00 per teacher, minimum of 20 teachers, support staff and interested parents.

**Enquire early as School Development and Planning Days are soon booked out.**



### Special Offer

**Upper Primary and Secondary school teachers**

### *Be a CALM scientist for a night!*

This is an opportunity for teachers to find out about CALM's *Western Shield* Schools Program and to experience the methods being used to bring wildlife back from the brink of extinction.

N.B. This is for teachers who have not yet used the *Western Shield* Action Pack.

### What's involved

- Hands-on experience of CALM's research monitoring methods - setting and checking traps for forest fauna.



- A chance to meet and question CALM Nature Conservation Officers.
- A close encounter with threatened species. Find out how animals are being bred in captivity and rehabilitated into the wild.
- Free Action Pack and other resources for use in school.
- Cost  
All expenses are paid by CALM.  
You arrange your own transport to and from Mundaring.
- Time  
4.30 pm to 10.00 am following day.
- When  
Friday 6th August to Saturday 7th August
- Accommodation  
Mundaring Youth Hostel



# School Camps in the Forest

Camp under canvas at The Hills Forest Activity Centre or Patens Brook camp sites. Alternatively, stay at the Mundaring Youth Hostel and participate in a number of our educational programs.

## What a teacher had to say about her Year 6 camp:

*The variety of hands-on activities led by such capable CALM staff at the Centre, the setting and the facilities made this a very special camp for students, teachers and helping parents. Thank-you.—Sharon*

### ○ The Hills Forest Activity Centre camp ground

Suitable for disabled people

**Facilities:** 12 shady tent sites, camp kitchen including electric BBQs, hot showers and toilets.

**Capacity:** one class with adults

**Cost:** Groups doing *Exploring The Hills Forest* activities:

\$4.00 per student per night (age 4 to 15 years)

\$8.00 per adult per night (1 free adult for each group of 10 children)

Groups not doing *Exploring The Hills Forest* activities:

\$6.00 per student per night

\$8.00 per adult per night



### ○ Patens Brook camp site

No vehicle access. Meet the challenge and walk three kilometres to the secluded camp site carrying all camping gear.

**Facilities:** Shady camp sites (15 pads), water tank and toilets, 3 fire rings

**Capacity:** one large class

**Cost:** \$3.00 per person per night

### ○ Mundaring Youth Hostel

Overlooking the Helena River valley enjoy the comfort and tranquillity of the hostel, one kilometre from The Hills Forest Activity Centre.

**Facilities:** 36 beds. Capacity for 50, extra mattresses available. Cooking facilities or have your meals prepared for you.

**Cost:** \$8.00 per student per night, \$17.00 per adult per night (one free adult per group), \$50.00 deposit is required when making your booking.



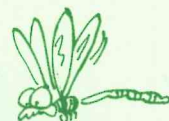
## About CALM

The Department of Conservation and Land Management (CALM) has the task of conserving Western Australia's unique natural heritage for present and future generations.

On behalf of the people of Western Australia, CALM manages a significant portion of the State, including our national parks, State forests, nature reserves, marine parks and timber reserves. It is a large task and one that requires the awareness, understanding and involvement of the wider community.

### ○ The Hills Forest project

CALM initiated The Hills Forest project to raise awareness and appreciation of the values and management of our forests. It offers visitors of all ages a range of outdoor experiences in the forest environment of Mundaring.



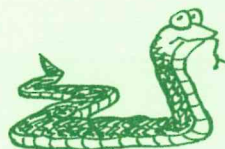
### ○ Exploring The Hills Forest programs

These programs have been developed for school students as part of The Hills Forest project. They have been written by local educators for local students. Since 1992 more than 35,000 students and teachers have been through our programs and the demand is growing.

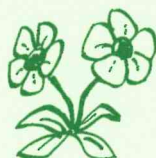
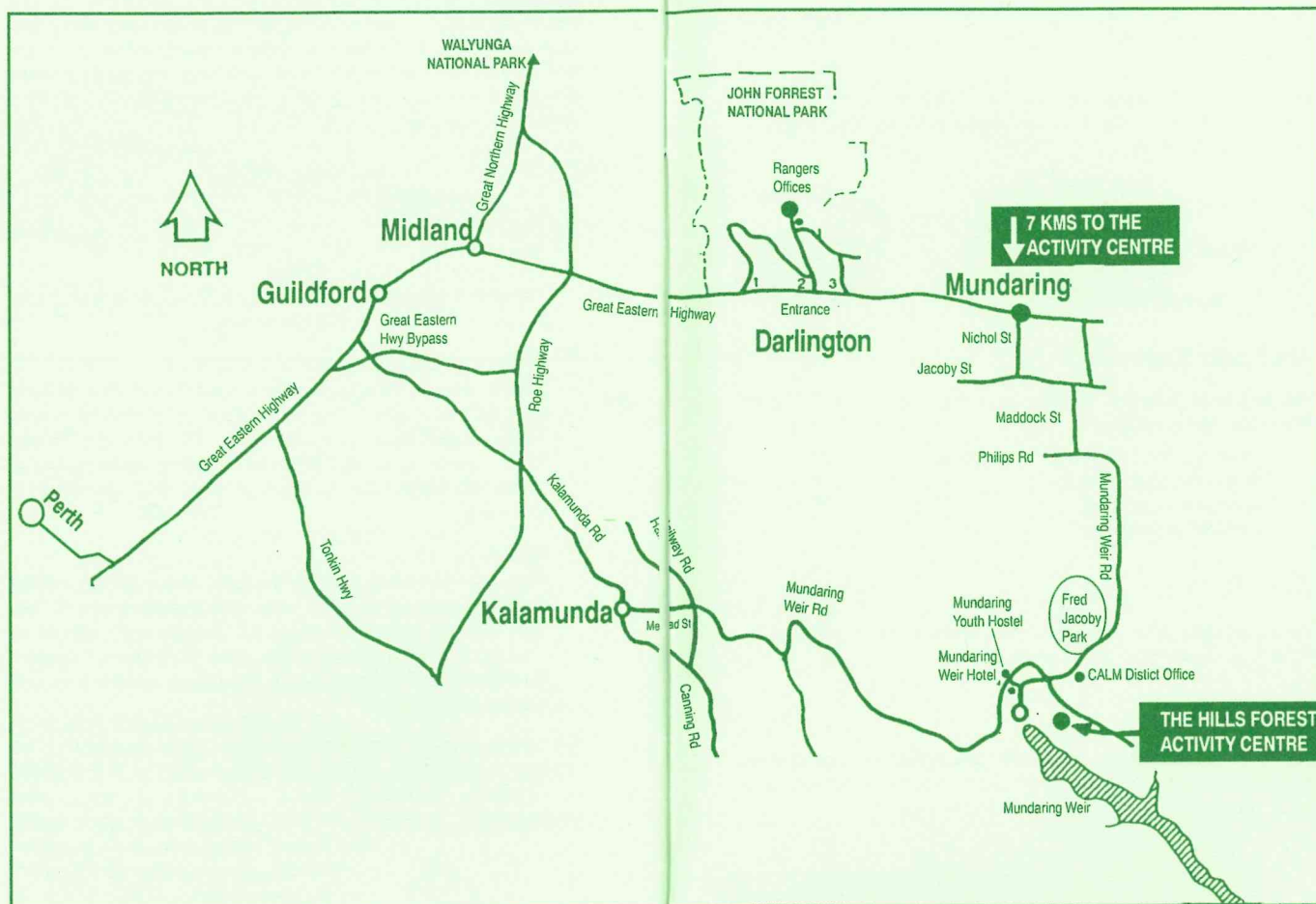
### ○ What's New?

This year we plan to give students more opportunities for close encounters with some of our native fauna. This will help to raise awareness of CALM's work aimed at saving threatened species. Our new *Threatened Species Excursion* will give students a hands-on experience of research methods.

We can now offer something more for every year level. The programs support the 'Outcomes' approach to the Primary Curriculum Learning Areas: Science, Society and Environment, The Arts, English, Mathematics and Health and Physical Education. Each program includes an excursion to The Hills Forest Activity Centre, which is guaranteed to be interactive, informative and exciting.



# The way to The Hills Forest Activity Centre



Tell me and I'll forget;  
show me and I may remember;  
involve me and I'll understand.

— Chinese proverb