

# LIBRARY

Department of Biodiversity,  
Conservation and Attractions

This PDF has been created for digital preservation. It may be used for research but is not suitable for other purposes. It may be superseded by a more current version or just be out-of-date and have no relevance to current situations.



ecology course

## REGISTRATION

Yes! Please enrol me for the Dryandra Woodland Ecology Course to be held Friday-Sunday 24-26 April 1998

First Name: .....

Surname: .....

Address: .....

.....

Phone: (day) .....

(night) .....

Are you prepared to car pool? **Yes No**

Do you eat *only* vegetarian food? **Yes No**

If yes indicate food preference .....

Send form and cheque for \$185 (made out to CALM) to:  
Dryandra Course Coordinator  
CALM

PO Box 100  
Narrogin WA 6312



Please note that there is a non-refundable booking fee of \$50 for cancellations within 48 hours of the course.

Revenue produced from this course will be used for continuing numbat research and upgrading the Field Study Centre 'Trabina' in Dryandra Woodland.

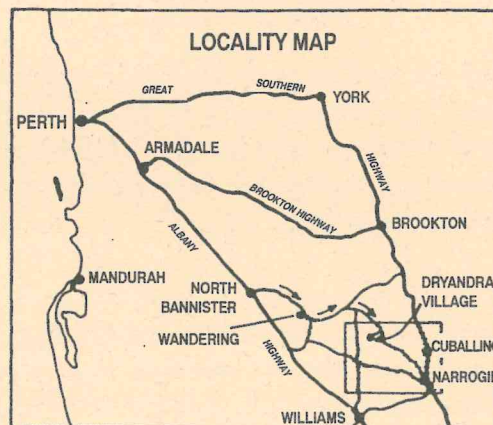
ecology course

## GENERAL INFORMATION

Participants need to bring their own bedding (including pillow and blankets), a towel, clothes and boots suitable for field work, effective wet weather gear and warm clothing. Additional useful equipment includes camera, torch, binoculars, field guides to plants and animals, and a personal journal.

## FURTHER INFORMATION

For more information please contact CALM's Narrogin District Office on (08) 9881 1113.



PRINTED ON RECYCLED PAPER

ecology course

# DRYANDRA WOODLAND

ECOLOGY COURSE

24-26 April 1998



DEPARTMENT OF CONSERVATION  
AND LAND MANAGEMENT



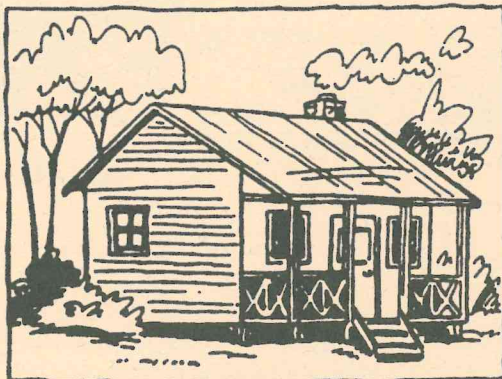
## THE COURSE

Try your hand at radio-tracking a numbat. Trap the tiny red-tailed phascogale. Watch a woylie digging for truffles. Identify land-use patterns and the changes they have brought to Dryandra and the wider Wheatbelt. Catch the nightly antics of a brushtail possum in the beam of your spotlight.

These are just a few of the experiences you might expect as a participant in the Dryandra Woodland Ecology Course, which will introduce you to aspects of local ecology and the application of ecological techniques.

Join enthusiastic course leaders to:

- ❖ identify the telltale signs of native animals and observe trapping techniques, including trap placement, baiting, handling captured animals, measuring and weighing;



- ❖ learn about Aboriginal cultural activities. You'll see first hand evidence of Aboriginal occupation in Dryandra and develop an appreciation for the environmental diversity Aboriginal people once enjoyed;
- ❖ sharpen observation skills, increase your awareness and knowledge of ecological processes and gain an understanding of the historical role of mallet plantations for tannin, timber production and conservation;
- ❖ participate in an unusual management planning game to discover the complex management issues of the 1990s.

## THE VENUE

The Irabina Field Study Centre is located in Dryandra State Forest, west of Narrogin and only 2 hours 30 minutes drive from Perth. Set among cleared agricultural land, Dryandra is a vital island of nature conservation.

The Dryandra complex of 17 separate blocks totalling more than 28,000 ha has been set aside by the Department of Conservation and Land Management (CALM) to conserve its unique woodland values.

## PARTICIPANTS

Participants should plan their journey to arrive at Dryandra no later than Friday 7.00 pm.

## WHO CAN PARTICIPATE?

Anyone with an interest in the natural world! No special qualifications or previous bush experiences are necessary to enjoy this course.

## COST AND EQUIPMENT

The cost of the course is \$185 per person, which includes transport within Dryandra, accommodation for two nights, all food, course content and printed materials.

## ACCOMMODATION AND FACILITIES

The Lions' woodland village provides house-style accommodation.

Cooking facilities include gas stoves, cooking utensils, pots, pans, cutlery and crockery.

A pay phone is located near the caretaker's cottage.

Communal cooking facilities are also available at the Nissen hut complex.

