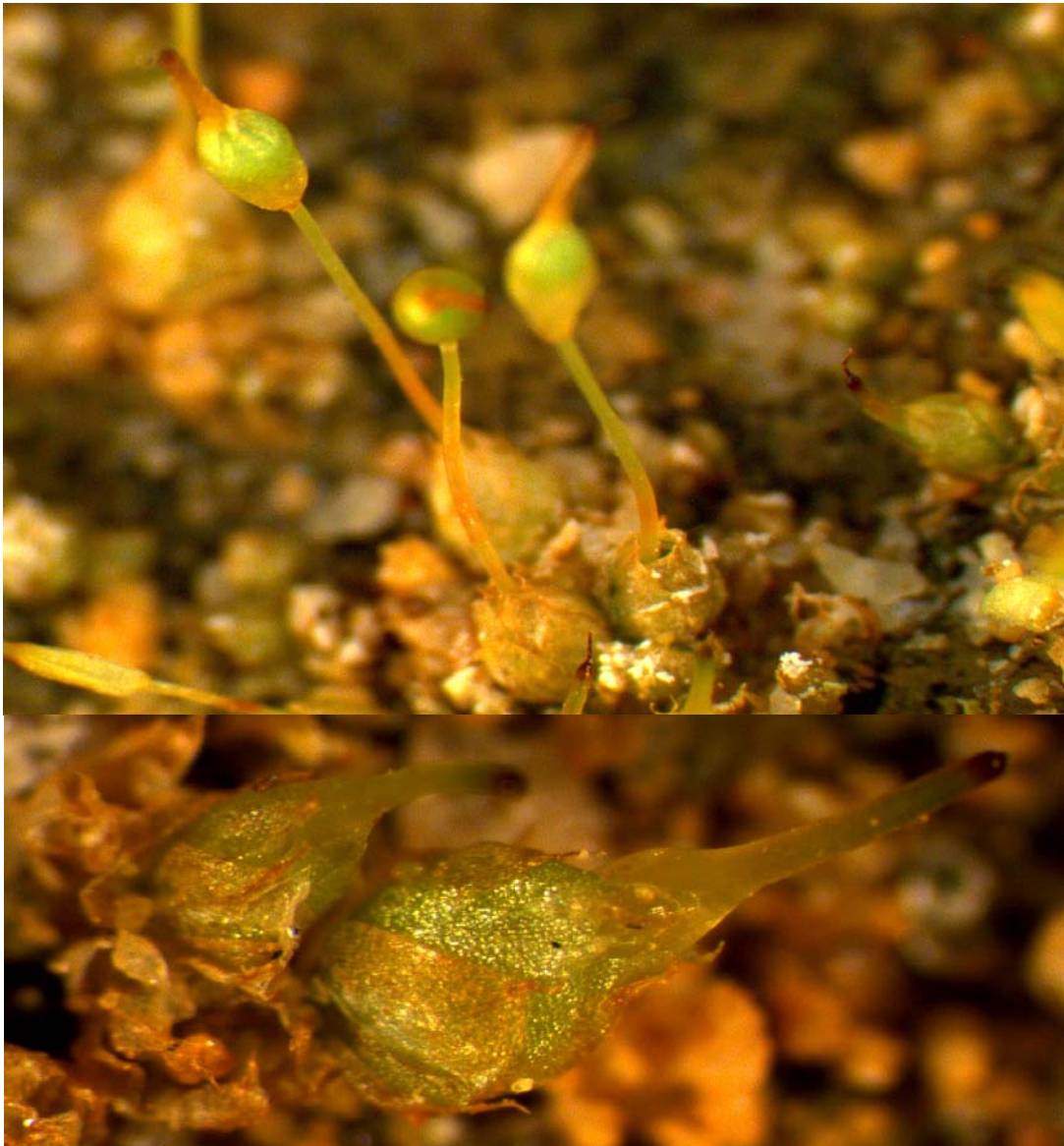


# LIBRARY

Department of Biodiversity,  
Conservation and Attractions

This PDF has been created for digital preservation. It may be used for research but is not suitable for other purposes. It may be superseded by a more current version or just be out-of-date and have no relevance to current situations.

## Cryptogam of the Month – December 2012



### *Entosthodon subnudus* var. *cuspidata*

*Entosthodon subnudus* var. *cuspidata* a very common small species of tufted moss that grows on compacted soils. The leaves are broadly ovate with a small point at the apex. The small capsule is thistle shaped (when open) and held straight on thin seta up to 25mm in length but can be easily broken off.

Usually found on soils in dry forests or woodlands and occasionally on mallee soils. Located in all states of Australia except NT and also occurs in New Zealand.

R.J. Cranfield. Science Division, DEC Manjimup.