

Agriculture Protection Board
 Advisory Leaflet No. 37
 August 1978
 Agdex No. 647
 76523/5/78-10M-L/2795

PARKINSONIA

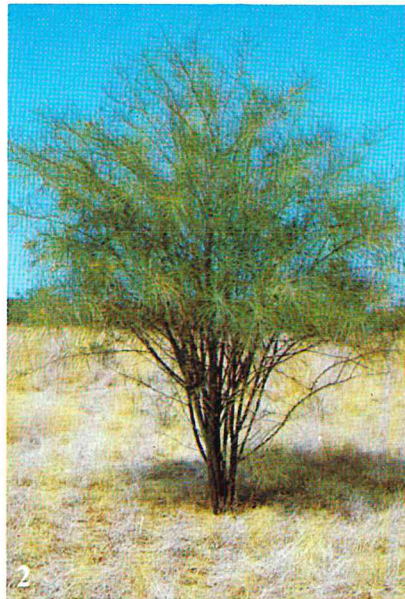


Parkinsonia is a serious weed in the north-west pastoral areas of Western Australia. It forms dense thickets, mainly along water courses, which shade out other vegetation, hamper mustering, restrict grazing and block access to water points. Parkinsonia is a native of tropical America. It was introduced into Northern Australia as an ornamental plant because of its attractive foliage and its drought tolerance. Hundreds of kilometres of the banks of Christmas Creek and the Ord, De Grey, Maitland and Ashburton Rivers are infested with Parkinsonia. It should be stopped from spreading further.

Parkinsonia is a declared plant (noxious weed) north of the 26th parallel in Western Australia.

Description:

Parkinsonia is a perennial shrub or small tree growing up to 8 metres high. It is a legume belonging to the same group of plants as the



1 Parkinsonia leaves, flowers and seed pods
 2 Parkinsonia tree.

wattles.

The trunk and branches have green bark. Stiff spines about 12 mm long are produced on the branches at the base of each leaf. The leaves

are narrow, very thin and up to 30 cm long, with numerous minute leaflets on both edges.

Parkinsonia mainly flowers from May to June, but individual plants may flower throughout the year. Bright yellow, fragrant flowers, 1 to 2 cm wide, are borne on flower stalks hanging near the ends of the branches.

Parkinsonia produces large numbers of seed pods, each containing several hard, black seeds. The pods are 5-10 cm long and straw coloured when ripe.

The plant is spread by seeds carried on flood waters.

Urgent action is essential to eradicate isolated patches of Parkinsonia to prevent the weed getting established in new areas.

Suspect plants should be reported to the Agriculture Protection Board, telephone PERTH (09) 367 0111, or any country officer of the Agriculture Protection Board or Department of Agriculture.