

CALM LIBRARY ARCHIVE
NOT FOR LOAN

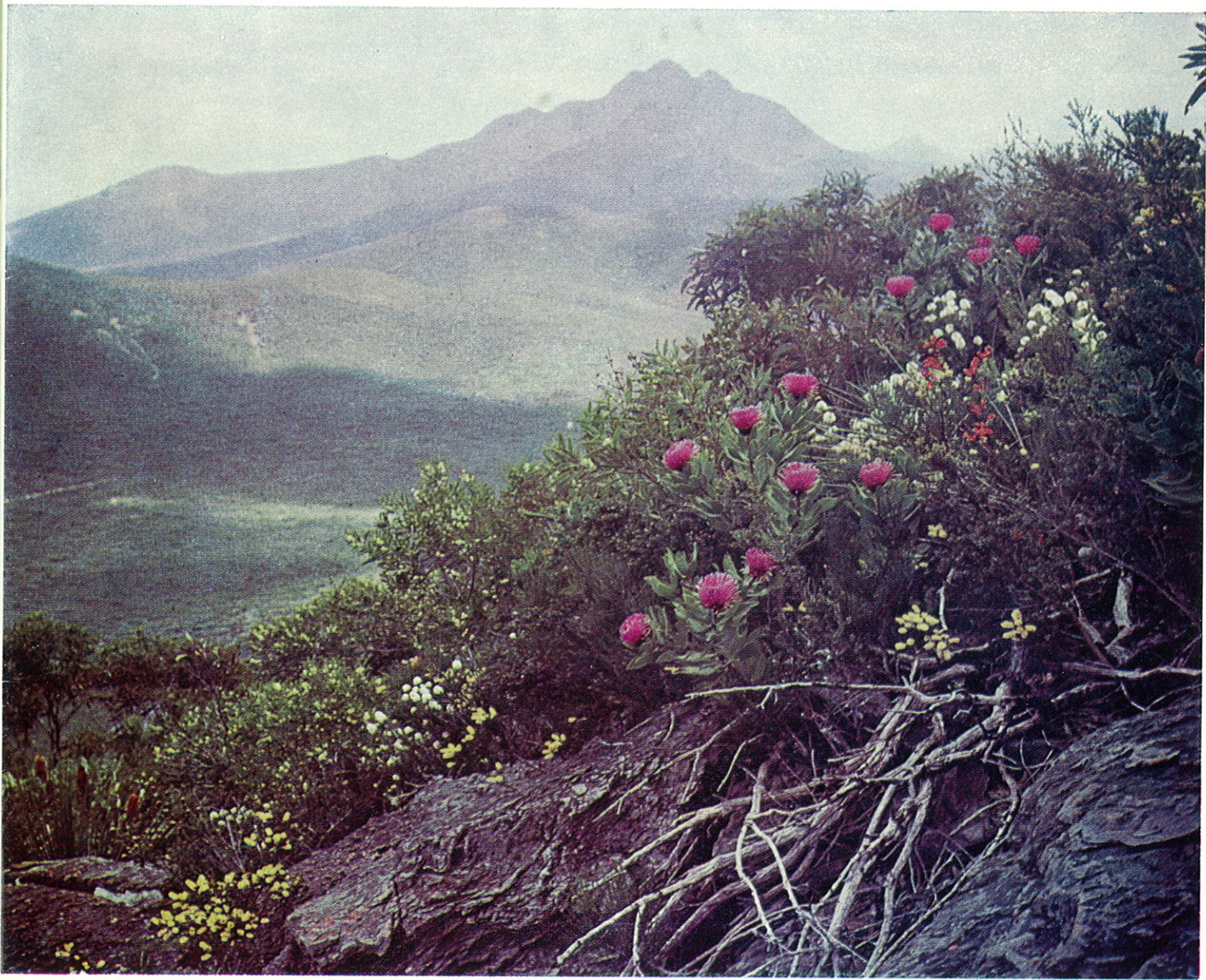
DEPARTMENT OF
FISHERIES AND FAUNA
LIBRARY.
WESTERN AUSTRALIA

ANNUAL REPORT

NATIONAL PARKS BOARD
OF WESTERN AUSTRALIA

FOR THE YEAR ENDED 30TH JUNE, 1964

PERTH, WESTERN AUSTRALIA



A view in the Stirling Range National Park

Annual Report

NATIONAL PARKS BOARD
OF WESTERN AUSTRALIA

FOR THE YEAR ENDED 30TH JUNE, 1964

National Parks Board of Western Australia

ANNUAL REPORT

For Year Ended 30th June, 1964

To The Honourable W. S. Bovell, M.L.A., Minister for Lands.

Sir.

I have pleasure in submitting this Board's Report on its main activities over the past year ended the 30th June, 1964.

I. BOARD MEMBERSHIP

Membership has remained unaltered since the previous annual report and comprises :—

- A. C. Shedley, M.B.E., B.Sc. (For.), President.
- C. F. H. Jenkins, M.A., Deputy President.
- C. R. Bunning, B.C.E., A.M.I.E.
- J. E. Lloyd, M.T.P.I., F.A.P.I.
- L. J. Parks.
- R. D. Royce, B.Sc. (Agric.).
- F. C. Smith, J.P.

2. ADMINISTRATIVE OFFICER

Managing Secretary—H. E. Bancroft, A.A.S.A., A.C.I.S.

3. RESERVES

(1) *New Vestings.*—Further National Parks and Reserves vested in the Board during the year have included :—

- (a) Reserve No. A.6862 at Emu Point, near Albany, for "Protection of Boronia" and comprising 114 acres 3 roods 31 perches.
- (b) Reserve No. 21314 near Kalamunda, as a "National Park" and comprising about 919 acres.
- (c) Reserve No. A.27004 near Kalbarri on the Murchison River, as a "National Park" and comprising some 358,000 acres. This is the largest national park now vested in this Board.
- (d) Reserve No. 27104 at Walpole for "Conservation of Indigenous Flora" and comprising 227 acres 3 roods 2 perches.
- (e) Reserve No. 21904 in the Serpentine area for "Park, Recreation and Conservation of Flora and Fauna" and comprising about 128 acres.
- (f) Reserve No. A.24581, south of Yanchep, as a "Sanctuary for Fauna" and comprising in the vicinity of 288 acres.

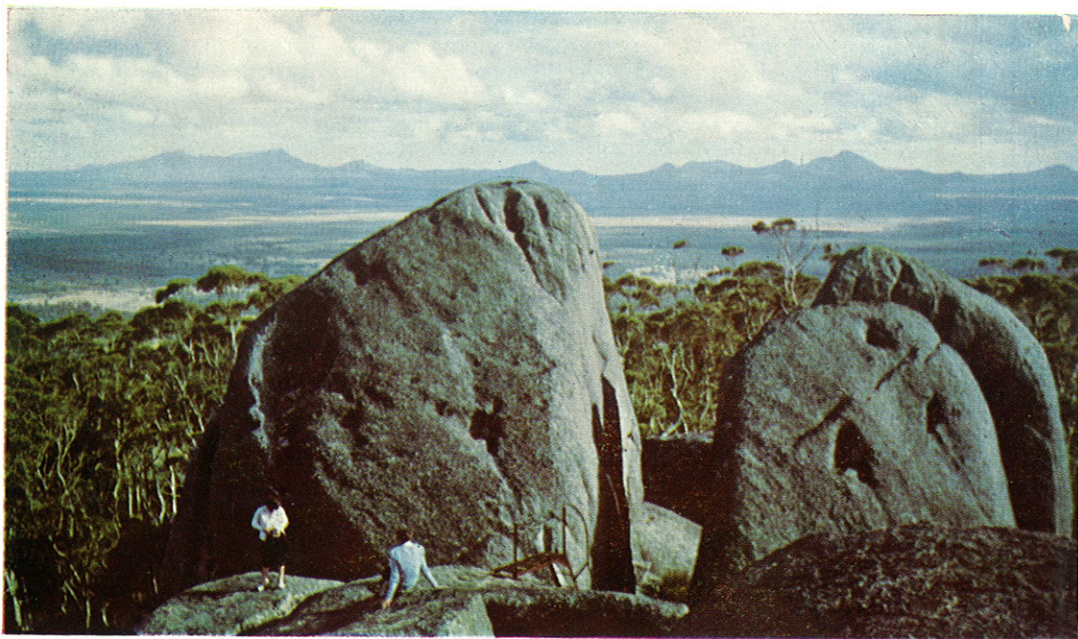
(2) *Amendments to Existing Reserves.*—The following amendments to existing reserves were effected during the year :—

- (a) Reserve No. 18723 which is part of Nornalup National Park was reduced by 37 acres 10 perches by the excision of golf course and yacht club sites respectively and their creation as new reserves vested in this Board as follows :—
 - (i) Reserve No. 26583 near Coalmine Beach for " Golf Course " and comprising 34 acres 3 roods 37 perches.
 - (ii) Reserve No. 26584 at Coalmine Beach for " Yacht Club Site " and comprising 2 acres 13 perches.
- (b) Reserve No. A.18987 (Porongorups National Park) was increased by the addition of Porongorups Estate Lot No. 6 of a little over 100 acres and also by the addition of Plan-tagenet Location 1101 of about 153 acres.
- (c) Reserve No. A.14792 (Stirling Range National Park) had added to it a further 5,453 acres, at the south-east corner, during the year.

(3) *Reserves Vested in the Board*

- (a) These comprise areas totalling in the vicinity of 694,364 acres, including Kalbarri National Park of some 358,000 acres, which was recently vested in the Board and is now the largest park under its control. Previously the Stirling Range National Park of 283,555 acres held pride of place.
- (b) Reserves vested in the Board include :—

<i>National Parks—</i>	Acres
Kalbarri	358,000
Stirling Range	283,555
Nornalup	33,134
Porongorups	5,651
John Forrest	3,648
Kalamunda	919
Greenmount	127
Lesmurdie Falls	81
	685,115
 <i>Reserves—</i>	
Yanchep Park and Caves	6,210
Yanchep Flora and Fauna Reserves	727
Yanchep Beach Reserve	44
Emu Point Boronia Reserve near Albany	115
Serpentine Falls Park Lands	1,571
Hamelin Bay	366
Crawley	57
Araluen—Canning Dam Area	50
Penguin Island	50
Walpole Golf Course	35
Walpole Yacht Club	2
East Perth Cemetery (Disused Burial Ground)	12
Keane's Point	6
Garden and Mowing Services Headquarters	2
Small Part of King's Park (Bernies)	1
Old Mill, South Perth	½
	9,249
Total	694,364



Castle Rock (Porongorups National Park) with the Stirlings in the background

(c) *General Vestment of Reserves in this Board*

- (i) Vesting of "The Knoll" reserve at Gooseberry Hill in this Board has not yet been finalised.
- (ii) Another area in the Neerabub-Wanneroo districts has not yet been vested in the Board.
- (iii) Reserves in the Peel Inlet, Lakes Clifton and Preston areas also have not yet been vested in the Board ; although such action was hoped to have been finalised during the year.
- (iv) Following recommendations by a Sub-Committee of this Board, an application was submitted for vesting in it of the following areas as National Parks—
 - Cape Le Grand and Recherche Archipelago area.
 - Cape Arid and Twilight Cove area.
 - Bremer Range area.
 - Fitzgerald River area.
- (v) Other areas considered eminently suitable for creation as A Class National Parks are—
 - Mt. Bruce-Wittenoom Gorge area.
 - Barlee Range area.
 - Dampier Archipelago area.
 - Kimberley Reserves.
 - Mt. Lesueur area.
 - Caves areas.

(d) *Classification of Reserves.*—Notwithstanding efforts made by the Board towards having all reserves vested in it declared of A class, some have not yet been classified as such.

4. GENERAL POLICY

(1) The general policy in relation to administration of the various areas under the control of the National Parks Board is as follows :—

- (a) To so administer the lands under its control as to ensure the preservation of their natural beauty, the conservation of native flora and fauna and the protection of geological and physiographical and other features of special interest.
- (b) To develop and improve certain areas for the purpose of promoting their enjoyment by the public.

(2) A general policy has been adopted in relation to the Stirling Range National Park and considerable progress has been made towards laying the foundation for one for Yanchep Park.

5. BY-LAWS

(1) Following revision of the Board's by-laws, arrangements were made to exhibit these in appropriate parks and reserves controlled.

(2) Action was taken against a few persons detected committing breaches of the Board's by-laws and these were offences relating to picking of wildflowers, carriage and discharge of firearms and exceeding the speed limit or driving dangerously in the park or reserve concerned.

6. FINANCE

Following is a summary in consolidated form of a comparative statement of receipts and payments for the past two years and those in respect of 1963-64 are subject to audit :—

1962-63	Receipts	1963-64
£		£
28,988	National Parks—General Receipts	28,169
43,352	Gardening and Mowing Services—Receipts	49,511
49,000	Treasury Subsidy	54,000
121,340		131,680
48	Plus Opening Credit Balance	5,336
£121,388		£137,016

1962-63	Payments	1963-64
50,948	National Parks—General Payments	54,588
19,019	National Parks—Improvements	26,349
69,967		80,937
43,790	Garden and Mowing Services—General Payments	45,906
2,295	Garden and Mowing Services—Buildings, Plant and Equipment	4,976
46,085		50,882
116,052		131,819
5,336	Plus Closing Credit Balance	5,197
£121,388		£137,016

Once again segregation of financial records between the National Parks Board General account and those applicable to the Garden and Mowing Services has been effected, in order to present a more accurate indication of receipts and payments relating to the important function of administering those National Parks and Reserves controlled by this Board, as distinct from other services rendered to Government Departments and Institutions.

Capital expenditure for Garden and Mowing Services cannot, for operating purposes, be allocated against the year of expenditure and must be depreciated over the life of the assets concerned.

The appointment of a Ranger for the Nornalup National Park part-way through 1962-63 and then an appointment during 1963-64 of a Ranger for the Stirling Range National Park has affected the expenditure under National Parks General Payments and also Improvements, due to commitments undertaken in acquiring accommodation, vehicles and equipment for them.

7. ROADS

As in the past, the Main Roads Department and Local Authorities concerned have co-operated with the Board in improving the roads within the parks and reserves. Roads concerned are referred to in the appendices to this report.

8. FIRE CONTROL AND FIRE LINES

(1) The Forests Department and local Bush Fire Brigades continue to help in the clearing and maintaining of firelines and access tracks in certain parks. Also the Main Roads Department has given certain assistance towards the construction of such tracks in the Nornalup National Park.

(2) During the year a further £250 was paid over to the Forests Department as a contribution towards the construction of firelines and tracks in the Serpentine Falls reserve.

(3) Also a chain saw was purchased for John Forrest National Park.

9. WILD LIFE CONSERVATION AND PROTECTION OF FLORA

(1) *Wildflower Conservation and Cultivation.*—Following general agreement at a Conference in 1962-63 for limiting the volume of wildflowers picked for display purposes, a special section has been fenced and set aside at Yanchep Park for cultivation of wildflowers for this purpose. It is hoped that the establishment of this section will eventually avoid the necessity to pick from within the park generally for display purposes. The extension of these facilities is envisaged at John Forrest National Park.

(2) *Biological Survey of National Parks and Reserves.*—A botanical and ornithological survey at Yanchep Park is in course and a brochure has been issued covering briefly these subjects. This is in conformity with the Board's policy of having carried out a biological survey of all national parks and certain reserves of a similar nature.

(3) *National Park Rangers.*—During the year a Ranger was appointed for the Stirling Range National Park and his duties will also take in patrol of the nearby Porongorups National Park, with particular attention to the protection of flora and fauna in each park.

(4) *Arbor Day Tree Planting.*—The practice of holding a tree-planting ceremony at Yanchep Park on Arbor Day was continued in 1963 and on Wednesday, 3rd July, nearly 300 children from the Wanneroo Primary School and St. Anthony's Convent attended and each planted a tree in the Park.

In the absence of the Hon. Minister for Lands, the proceedings were opened by Mr. J. F. Craig, M.L.A. (Minister for Police and Transport and Member for Toodyay). Other important visitors were the President (Mr. E. Crisafulli) and representatives of the Wanneroo Shire Council, the President (Mr. A. W. Llewellyn) and the Hon. Secretary of the district Parents' and Citizens' Association and representatives of the Main Roads and Forests Departments and the Wydgee Pastoral Company.



A Giant Tingle, Nornalup National Park

Due to inclement weather the opening ceremony was held in the Yanchep Hall, followed by the screening of selected films. Fortunately the weather cleared sufficiently for the Hon. Minister to plant the first tree, followed by other members of the official party and the school children present. In all, 1,000 trees were planted in a prepared area between the Perth-Lancelin Road and the road above the East Oval, varieties being as follows :—

- 600 Tuarts (*Eucalyptus gomphocephala*)
- 100 Coastal Mallee (*Eucalyptus decipiens*)
- 100 Flooded Gums (*Eucalyptus rudis*)
- 100 Red Flowering Gums (*Eucalyptus ficifolia*)
- 100 White Flowering Red Gums.

(5) *Koalas*.—These are exhibited at Yanchep Park. During the year three cubs were born, one of which died through a fall and an older koala also passed away.

(6) *Kangaroos, Emus and Birds*.—Small exhibits of kangaroos, emus, parrots and finches have been established at Yanchep Park. Also there are black swans and ducks on the ornamental lakes.

10. SPRINGTIME WILDFLOWER WALKS

These walks continue to attract many Overseas, Inter-State and Intra-State visitors to Yanchep Park and John Forrest National Park, where wildflowers are cultivated in beds, centrally situated, in order to avoid the need for visitors to travel or walk long distances in order to see a representative collection of this outstanding flora.

II. SIGNPOSTING OF NATIONAL PARKS AND RESERVES

(1) Signposting of national parks and reserves continues to receive attention, with particular emphasis on protection of flora and fauna and the prohibition of firearms and lighting of fires (in other than fireplaces) in parks and reserves.

(2) Unauthorised destruction or mutilation of signs presents its problems.



"Laura", one of Yanchep's Koalas

12. BUILDINGS AND FENCING

(1) Brick change rooms, toilets, picnic facilities and water supply were erected at the parking area near Bluff Knoll in the Stirling Range National Park. The Tourist Development Authority subsidised the cost of providing these amenities and following are photographs of the buildings.

(2) Also a start was made on the erection of a toilet block at Coalmine Beach for use of day visitors.

(3) Additional garage space was provided at John Forrest National Park by erection of a new building near the Oil and Petrol Store.

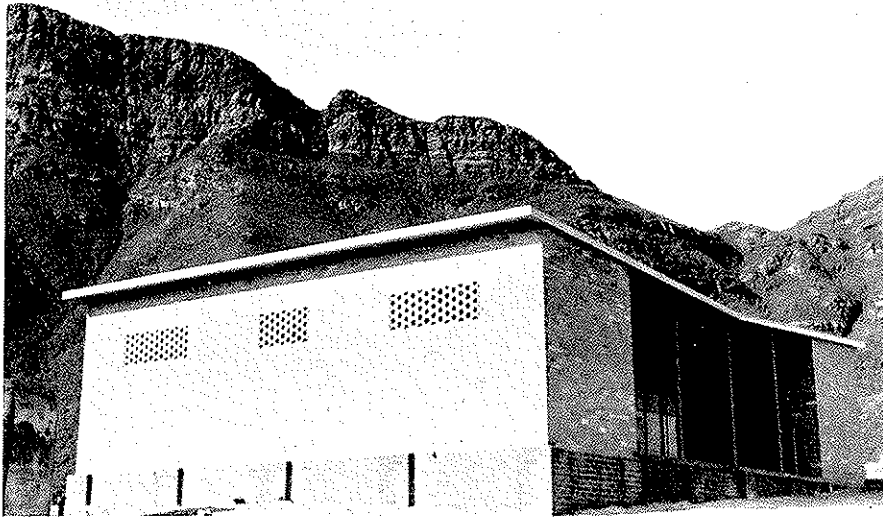
(4) Renovations and painting of buildings at Yanchep Park received attention during the year. Also an "Aga" Slow Combustion Stove was provided at Gloucester Lodge in replacement of old cooking facilities installed many years ago.

(5) Another 3 chains of fencing were erected along the Hackett Drive boundary of Crawley Reserve and the Bird Sanctuary also fenced.

13. ELECTRICITY

(1) *Yanchep Park Electricity.*—It is pleasing to be able to report that the Treasury and State Electricity Commission reached agreement on a proposal to extend the State Electricity Commission power lines to Yanchep Park. This followed strenuous efforts by the Board and others to have this effected. All buildings, water pumps and street lights are now connected to this supply, but the caves are not yet lit from this source of supply. It is hoped to change over to A.C. lighting of the caves shortly by stepping down the voltage to 110 V. in the interests of safety.

(2) *John Forrest National Park Electricity.*—Arrangements are well advanced towards providing State Electricity Commission light and power for the Tea Room and attached residence.



Change Rooms and Picnic Shelter at Stirling Range National Park,
with Bluff Knoll in the background

Toilet Block (near change rooms) at Bluff Knoll Parking Area in
Stirlings



14. NEW PLANT AND EQUIPMENT, ETC.

(1) A tractor with rotary mower attachment and a small rotary mower were acquired for Yanchep Park, a small rotary mower for East Perth (disused) Cemetery and a truck, tractor, mowers, etc., for the Mowing Services Section.

(2) Also a further four dinghies were built during the year for use on Loch McNess at Yanchep.

15. YANCHEP PARK GOLF COURSE

The golf course has been improved considerably over the past year and is now in good playing order. The rough adjoining the fairways has been cleared out where necessary and further attention given to the greens.

16. STANDARD PICNIC FIREPLACES

A further forty (40) standard concrete picnic fireplaces have been acquired and distributed among the parks and reserves. The Tourist Development Authority has assisted in providing these.

17. ALGAE REMOVAL

The Board is still co-operating with the Swan River Conservation Board in its very successful efforts to keep the Swan River foreshore free from algae.

18. PUBLICITY

(1) An attractive folding leaflet on Nornalup National Park was issued during the year, along with a single page leaflet on the Stirling Range National Park and a booklet on Yanchep Park was received around the end of the year under review, ready for issue in 1964-65.

(2) Publicity has been provided throughout the year in the press, over the radio and by way of television telecasts on items of interest in national parks and reserves. Our thanks go to the Organisations concerned, as these mediums of publicity help to bring before the public the facilities being made available to them for enjoyment and recreation in their national parks and reserves.



The Jewel City, Crystal Cave, Yanchep Park

19. PLAQUE COMMEMORATING THE VISIT TO PELICAN POINT BY HIS ROYAL HIGHNESS THE DUKE OF EDINBURGH

A plaque in the wording suggested by His Royal Highness has been erected at the Bird Watching Knoll at Pelican Point, to mark the spot and commemorate the occasion of the 27th March, 1963, when His Royal Highness watched the birds at Pelican Point from that lookout.

20. INSPECTIONS BY BOARD MEMBERS

Board Members have carried out periodical visits to national parks and reserves vested in them (as a Board) and have met the Nornalup National Park Advisory Committee on more than one occasion during the year.

21. APPENDIX

Further information in respect of individual national parks and reserves, etc., is given in the appendices to this report.

22. GENERAL

(1) Members wish to record their appreciation of the advice and assistance rendered by various Government Departments and Organisations, including the following—Agriculture, Child Welfare, Forests, Government Stores, Harbour and Light, Lands and Surveys, Main Roads, Metropolitan Water Supply, Public Works, Town Planning and Treasury and also the Government Printing Office, Lotteries Commission, Swan River Conservation Board, Tender Board and the Tourist Development Authority.

(2) The Members join with me in expressing appreciation of the assistance and co-operation received from the Staff, including Superintendents and outside Staff.

A. C. SHEDLEY,
President, National Parks Board of Western Australia.

APPENDICES TO ANNUAL REPORT OF NATIONAL PARKS BOARD OF WESTERN AUSTRALIA
FOR YEAR ENDED 30th JUNE, 1964

APPENDIX A.—NATIONAL PARKS AND RESERVES

I. KALBARRI NATIONAL PARK

- (1) *Control.*—It is hoped to appoint an Honorary Ranger for this park in the near future.
- (2) *Signposting.*—Action is in hand to have a few signs prepared for erection at suitable points in this park.

2. STIRLING RANGE NATIONAL PARK

- (1) *Control.*—Ranger F. A. Spratt was appointed in late October, 1963, and for the time being he operates from a caravan located at the junction of the Bluff Knoll access road with the Chester Pass road.
- (2) *Additional Territory.*—This park has been increased in size and an attempt is being made to gain control over the small Red Gum Springs area, which is situated within the outer boundaries of the park.
- (3) *Access and Other Roads.*
 - (a) *Toolbrunup Access Road.*—Improvements have been effected to this road by the Main Roads Department, and it is now much better for traffic ; although the last part of the road is still a little rough following the Winter rains.
 - (b) *Bluff Knoll Access Road.*—Regular grading of this road has been carried out by the Local Authority, but sealing of the surface is really necessary, particularly the last half mile, and it is anticipated this will be done in the near future.
 - (c) *Salt River Road.*—The Board would like to see this road made more trafficable and the matter has been taken up with the Local Authority.
- (4) *Amenities at Bluff Knoll Parking Area.*
 - (a) Attractive change rooms, toilets, picnic tables, water supply, concrete barbecue fireplaces and rubbish bins have been provided at this scenic spot. Tourist Development Authority assisted in financing these improvements.
 - (b) The question of establishing further picnicking facilities in the Moingup Springs area is receiving consideration.
 - (c) Good drinking water is not easy to obtain in this park and advice has been sought on means of obtaining such. Once a suitable source of supply is located, a caravan and camping area will be established nearby. In the meantime an area near the Ranger's caravan is being utilised for this purpose.
- (5) *Visitors.*
 - (a) Following his appointment in late October, 1963, the Ranger has kept records of visitors to the Bluff Knoll area, and at least 1,780 vehicles (representing over 5,000 people) have visited there from 1st November, 1963, to 30th June, 1964. Of course other visiting vehicles would not have been recorded when he was away inspecting or working in other areas or was on stand-down.
 - (b) Records have of necessity not been kept of the many others who may have visited Toolbrunup, Moingup Springs, Warrungup, Mt. Trio, Mondurup and Red Gum Springs areas.

3. NORNALUP NATIONAL PARK

- (1) *Control.*—Ranger L. G. Gunson is in residence at Coalmine Beach, via Walpole.
- (2) *Nornalup National Park Advisory Committee.*—Messrs. Tom Swarbrick Jun. (Chairman), C. Cooper, J. D. Hull, J. T. Lanning and J. H. Rate comprise this Committee and Mr. Rate also carries out the additional duties of Secretary to the Committee, besides Honorary Ranger duties. This body serves the useful purpose of making known to the Board the local viewpoint in an advisory capacity.
- (3) *Roads.*
 - (a) *Access Road to Coalmine Beach.*—Main Roads Department finance has made it possible to improve another section of this road ready for sealing before Christmas 1964. The Shire of Manjimup is co-operating in carrying out these road improvements, which will result in a sealed road from the South Coast Highway turnoff to the amenities block at Coalmine Beach.
 - (b) *Hilltop Road.*—This road has been widened and gravelling work will be carried out shortly in order to provide access as far as the giant Tingle tree. The Main Roads Department has provided finance for this work.
 - (c) *Access Road to Sandy Beach.*—A rough access track has been bulldozed into this beach.
 - (d) *The Knoll Drive.*—Traffic using this drive should travel in an anti-clockwise direction, otherwise drivers render themselves liable to penalty. Travelling in this direction is safer from the road point of view and takes advantage of some fine views of the inlets, etc.
- (4) *Fire-lines and Access Tracks.*—The Forests and Main Roads Departments have co-operated in providing further fire-lines and access tracks in the Deep River and Mt. Clare sections of the park.
- (5) *Signs.*—Further signposting of the park has been carried out, including arrangements made with the Shire of Manjimup for certain road signs.
- (6) *By-Laws.*—The Board's by-laws are exhibited at the Coalmine Beach area.

- (7) *Caravan and Camping Area, Coalmine Beach.*
- (a) Caravan and tent sites were occupied by over 250 caravans and 375 tents respectively at different times throughout the year, with emphasis on the rush periods over the Christmas and Easter holidays, when some would-be caravanners and campers had to be turned away.
 - (b) The existing facilities are insufficient to meet the peak period demand and plans are in hand to duplicate the amenities block and improve these facilities for the comfort of visitors.
- (8) *Camping at The Depot and Peppermints.*—All but two unauthorised structures have been removed from these areas following a Board decision not to allow camping at them. If the owners of the remaining two structures cannot be located, action will be taken to have the structures removed.
- (9) *Launching Ramp.*—Preparatory work is under way towards establishing a launching ramp at Coalmine Beach for small boats.
- (10) *Water Supply, Coalmine Beach.*—A further 5,000 gallon overhead tank was provided during the year, but with the increasing demand for water it will be necessary to supplement the supply from the bore and it is envisaged pumping water from Collier Brook over the Summer months. The bore could still be used over the Winter months when the brook water becomes peat stained.
- (11) *Public Toilets, Coalmine Beach.*—At the close of the year, a block of new toilets at Coalmine Beach was nearing completion. These facilities are being provided for day visitors.
- (12) *Children's Playground Equipment.*—Several items of children's playground equipment have been provided in an area adjacent to the caravan park. The Lotteries Commission assisted financially and this assistance has been appreciated.

4. PORONGORUPS NATIONAL PARK

- (1) *Control.*—Ranger F. A. Spratt visits this Park periodically in conjunction with his other duties in the Stirling Range National Park, following his appointment in late October, 1963.
- (2) *Additional Territory.*—Porongorups Estate Lot No. 6 and Plantagenet Location 1101 were added to this Park during the year (refer main section of Report) and negotiations are in course towards having a further area of 117 acres added on the western side of the park.
- (3) *Fire Control.*—The question of regrading of access tracks and fire-lines is receiving attention as this becomes necessary after each Winter. The Porongorups Bush Fire Brigade continues to co-operate with the Board in regard to fire control.
- (4) *General Development and Amenities.*—Some standard concrete picnic fireplaces have been provided and it is hoped to supply picnic tables and rubbish bins (already on order) to popular picnic areas.

5. JOHN FORREST NATIONAL PARK

- (1) *Control.*—Superintendent G. R. Edwards is in charge of this Park.
- (2) *Wildflower Gardens.*—Further planting of wildflowers has been carried out, wildflower identification name-plates provided and Springtime wildflower conducted walks continued.
- (3) *Garage Accommodation.*—A Garage was erected during the year in order to house all vehicles.
- (4) *Plant and Equipment.*—A chain saw was purchased, in order to facilitate the provision of firewood for the barbecue fireplaces and also as an additional precaution in the event of bush fires or removal of trees falling across road or fire-lines.
- (5) *Electricity.*—Arrangements were in hand towards the end of the year for extension of the S.E.C. light and power to the Tea Room and adjoining residence, in order to facilitate the service to visitors. This extension is the culmination of efforts over a fairly lengthy period.
- (6) *Fire Control.*—Fire-line maintenance has received the usual annual attention and controlled burning carried out to an approved plan.
- (7) *Proposed Glen Brook Dam.*—Unfortunately this proposed dam was not built in 1963-64 as envisaged. There were several reasons for the delay; but it is pleasing to report that plans and specifications were nearly complete by the close of the year and tenders are expected to be called about August, 1964.

6. KALAMUNDA NATIONAL PARK

This National Park was only recently vested in the Board and a detailed plan of management has not yet been prepared for this area of 919 acres which will form part of a scenic reserve along the escarpment of the Darling Range.

7. GREENMOUNT NATIONAL PARK

- (1) *Control and Management.*—This comparatively small park of about 127 acres affords nice views; but so far picnic facilities, etc., have not been provided, pending the construction of an access road.
- (2) *Access Road.*—The Main Roads Department is in the process of constructing a suitable access road to the scenic lookout in this park.

8. LESMURDIE FALLS NATIONAL PARK

(1) *Control*.—Unfortunately we have not got a full-time Ranger for this park and the John Forrest National Park staff has been assisting in its control.

(2) *Amenities*.

- (a) Fireplaces, picnic tables, a bitumen parking area, stone steps to below the falls and a lookout have been provided, but further development is dependent upon siting of a proposed scenic drive in this area.
- (b) The existing toilets will probably have to be replaced once the scenic drive route has been settled and the area re-planned. Also it is anticipated extending the stone steps right down to the foot of the falls and providing walking paths, etc.
- (c) Arrangements were completed for the establishment of a mobile kiosk in the reserve and this opened for business on the 1st August, 1964.

9. YANCHEP PARK

(1) *Control*.—Superintendent W. J. Burnett is in charge of this park, the Yanchep Beach Reserve and a few small nearby reserves.

(2) *Wildflower Gardens*.—Further progress has been made in the establishment of wildflower beds as an added attraction in this park. An area has been fenced with a view to growing wildflowers for cutting purposes in connection with requirements for the Annual Wildflower Exhibition, etc.

(3) *Fire Control*.—Controlled burning has been carried out in this park to an approved plan and fire-lines have been properly maintained. Plans are in hand to extend the fire-line system.

(4) *Roads and Parking Areas*.

- (a) An access road to Loch McNess and another one leading to Cabaret Cave have been sealed.
- (b) Parking areas at the Crystal Cave and adjacent to Yanchep Inn have been surfaced.
- (c) Widening of the road near the petrol pumps and provision of a road west of the Kangaroo and Emu enclosures are envisaged.
- (d) Busy periods over-tax parking space and this aspect is receiving attention.

(5) *Tennis Courts*.—The fencing around these courts has been re-conditioned. Even though the courts were re-surfaced with colas, the demand for them seems to have dropped recently. No doubt this is due to a general waning of interest in tennis.

(6) *Golf Course*.—The fairways and greens have been improved considerably and there is an increased demand for bookings.

(7) *New Playing Field near Cabaret Cave*.—A considerable amount of filling has been provided in order to raise the surface of this field, in the expectation of overcoming dampness caused by the high water table in this area. Dispersal of visitors is necessary in the Springtime, particularly, and it is thought that this playing field will help in this direction, besides meeting the increasing demand for playing fields.

(8) *Yanchep Inn*.

- (a) The Inn is leased out and there has been a change in Lessee recently, after a long period under the one management.
- (b) A new fire-proof stairway was erected to replace the old wooden steps at the rear of this building.

(9) *Gloucester Lodge*.

- (a) These premises are also on lease and there has been a change in Lessees recently.
- (b) Improvements have been effected in order to provide better toilet facilities for visitors, at the same time improving the Lessees quarters.
- (c) A new "Aga" slow combustion stove was installed.

(10) *McNess Guest House*.—Renovations, including internal and external painting, have been carried out to this building.

(11) *Electricity* (also referred to in Main Report).

- (a) The S.E.C. light and power have been extended to this park.
- (b) This extension has certainly benefitted the park and we appreciate the efforts of those who helped in making the arrangements.
- (c) All buildings, water pumps and street lights have been connected to the supply; but the caves are still connected to the old D.C. unit, pending finalisation of plans to rewire and connect to the A.C. supply, with step-down transformer to 110 V.

(12) *Rowing Boats*.

- (a) A further four of these were obtained during the year from "Riverbank," a Rehabilitation Centre administered by the Child Welfare Department. This Board supplies the material and the dinghies are constructed there.
- (b) Painting and general maintenance of the dinghies is normally carried out at Yanchep Park.

(13) *Plant and Equipment.*—Items purchased during 1963-64 included a new tractor with rotary mower attachment, a small rotary mower, water pumps, etc.

(14) *Koalas* (also referred to in Main Report).—Partitioning of enclosures has received attention in order to facilitate pairing off of koalas for breeding purposes and an attempt will be made to obtain another pair for breeding purposes.

(15) *Market Garden Leases.*—The remaining market garden lease expired on the 30th June, 1964, and it is not proposed renewing them because market gardening is foreign to the purposes of the vesting order in relation to this park.

10. YANCHEP BEACH RESERVE

(1) *Control.*—Exercised in conjunction with Yanchep Park.

(2) *Roads and Parking Areas.*—The internal road system has been re-aligned and surfaced. However parking space is still inadequate and it is anticipated that this will receive attention during the coming year.

(3) *Amenities.*

(a) A kiosk is in operation and it is hoped to improve other amenities once finality has been reached on road and parking requirements.

(b) It will probably become necessary to replan the whole area.

11. EMU POINT BORONIA RESERVE, NEAR ALBANY

(1) *Control.*—The question of appointing an Honorary Ranger is being investigated.

(2) *Signs.*—Arrangements are in hand to erect suitable signs regarding the prohibition on picking of wildflowers and dumping of rubbish on this reserve.

12. SERPENTINE FALLS RESERVES

(1) *Control.*

(a) A part-time Ranger (W. G. Baldwin) looks after the change rooms and toilets.

(b) It is hoped to appoint a full-time Ranger in the near future.

(2) *Fire-lines.*

(a) A further £250 was paid over to the Forests Department during the year, this being the second such annual payment towards a commitment of £750 in connection with fire-line construction work being undertaken by the Department on our behalf within these reserves.

(b) The difficult terrain has presented problems, necessitating approaching adjoining property owners for permission to extend some protective fire-lines across their properties.

(c) Those fire-lines north of the Serpentine River have been completed and it is hoped those to the south side will be constructed shortly when the weather improves.

13. HAMELIN BAY RESERVE

(1) *Control, etc.*—A portion of this reserve is leased for holiday purposes and the Lessee (Mr. A. S. Wood) acts as an Honorary Ranger.

(2) *Amenities.*—Change Rooms and toilets have been provided adjacent to the beach with financial assistance from the Tourist Development Authority.

14. CRAWLEY RESERVE

(1) *Control.*—Caretaker/Ranger P. W. Daley is in residence at this river beach reserve.

(2) *Fencing.*—Some more of the boundary of this reserve was refenced with low single rail galvanised pipe type of fencing.

(3) *Bird Sanctuary at Pelican Point.*

(a) A low single rail fence has been erected along the boundary of this Sanctuary in order to define the area set apart for this purpose. The assistance of the Tourist Development Authority is acknowledged in providing funds for half of the cost.

(b) Appropriate signs have been erected in position.

(4) *Bird Watching Lookout.*

(a) Action is in course to overcome a problem caused by storm water.

(b) Difficulties have arisen regarding the provision and control of binoculars or a telescope for use of bird watchers, and from a practical point of view it may become necessary to leave to bird watchers or tourists the provision of their own binoculars.

(5) *Crawley Bay Tea Rooms.*—The question of rebuilding is still under consideration ; but is tied up with future road planning in this area.

15. ARALUEN-CANNING DAM AREA

A small reserve as yet undeveloped.

16. PENGUIN ISLAND RESERVE

- (1) *Control*.—The Lessee (Mr. R. G. Carlberg) of portion of this island and his son have been appointed Honorary Rangers for this reserve.
- (2) *Fauna (Penguins)*.
 - (a) Action was taken to signpost the island in relation to protection of penguins and prohibition of dogs on the island.
 - (b) In addition, action was also taken to have the Lessee (Mr. R. G. Carlberg) appointed by the Shire of Rockingham as an Honorary Dog Catcher for the island.
 - (c) These actions were considered necessary protective measures for preservation of the penguins.
- (3) *Holiday Amenities*.—The new Lessees have effected many improvements for the convenience of visitors to the island.

17. EAST PERTH (DISUSED) CEMETERY

- (1) This old disused Cemetery contains the graves of many of our early pioneers.
- (2) It has been beautified and the grounds are maintained in good order.
- (3) A small rotary mower was purchased during the year in order to facilitate clearing up around the graves.

18. KEANE'S POINT RESERVE

Leased to the Royal Freshwater Bay Yacht Club (Inc.).

19. SMALL PART OF RESERVE A1720 (KING'S PARK)

This small area adjoining Mounts Bay Road is leased to Mr. B. S. Hardwick, who operates a kiosk type of establishment known as "Bernies."

20. OLD MILL, SOUTH PERTH

Leased to Messrs. H. L. Brisbane & Wunderlich Ltd., who maintain the Old Mill and Cottage as tourist attractions.

APPENDIX B.—GARDEN AND MOWING SERVICES

21. GARDENING SECTION

- (1) *Control, etc.*
 - (a) Mr. R. D. Green, Supervisor of Gardens, is in control of this service.
 - (b) A gardening service is provided in the grounds of eight State Housing Commission Multi-Storey Flats and 23 other Government Departments or Institutions.
 - (c) In addition, he supervises the garden work at Government House and Parliament House, besides acting in an advisory capacity at Crawley Reserve, John Forrest National Park, Yanchep Park and the Zoological Gardens, when required.

(2) *Landscaping and Planning of School Grounds*.—At the request of the Education Department, our Supervisor has given advice and prepared layout plans during the year for certain schools, including Wilson (Beeloo) at South Bentley, Melville Infants; Woodlands, Naval Base and Balcatta Primary Schools.

In addition, other plans sought in 1963-64 and nearly completed at the close of the year were those in relation to the Wembley Trades, Leederville Technical, Lake Gwelup and Mt. Lawley Technical Schools.

22. MOWING SERVICES

- (1) *Control*.—Foreman E. S. Walters is in control of this Section, which has its Depot established at Jarrah Road, Victoria Park.
- (2) *Mowing and Edging*.
 - (a) *School Grounds and Playing Fields*.—Further new schools have been opened up during the year, thus increasing the number utilising this service to 167, compared with 165 in the previous year.

- (b) *Other Government Establishments.*—Mowing is carried out at 73 of these establishments, representing a similar figure to that of the previous year and includes lawns at State Housing Commission Multi-Storey Flats.
- (c) *Garage and Parking Space.*—When it became necessary to move this Section to Jarrah Road, Victoria Park, the whole of the site allocated was not fenced and levelled, due mainly to lack of finance. During the year under review the fenced area was extended, further levelling work carried out and the hard-standing area was extended by gravelling ready for sealing later. Plans and specifications are being prepared for extension of existing garage space. This was rendered necessary through the acquisition of further vehicles, mowers, etc.
- (d) *Vehicles and Mowers.*—Another 30 cwt. Truck and a Ferguson Tractor were purchased during the year, along with a single gang mower unit as a spare and five mowers of various types. Arrangements were made to acquire three weatherproof cabs for the tractors and one was placed in use about the end of the year reviewed.
- (e) *Plant and Equipment.*—A small compressor unit and a single phase electric welder were obtained in order to further improve the efficiency of the organisation.