



*Bluff Knoll, (3,640 ft.) Stirling Range National Park, W.A.*

# NATIONAL PARKS BOARD OF WESTERN AUSTRALIA

## ANNUAL REPORT

FOR THE YEAR ENDED 30TH JUNE, 1965

**NATIONAL PARKS BOARD  
OF WESTERN AUSTRALIA**

**ANNUAL REPORT**

FOR THE YEAR ENDED 30TH JUNE, 1965

## NATIONAL PARKS BOARD OF WESTERN AUSTRALIA

To the Honourable W. S. Bovell, M.L.A.,  
Minister for Lands

Sir,

I am pleased to submit on behalf of the Board, this report concerning its principal activities over the year ended the 30th June, 1965

Once again it has been another year of continued progress, the largest single undertaking being the construction of a 32.5 million gallon dam on Glen Brook in the John Forrest National Park, which will be referred to again later in this report.

### BOARD MEMBERSHIP

There was an alteration in membership on the 30th June, 1965, when Mr. A. C. Shedley, M.B.E., B.Sc. (For.) retired from the positions of Member and President.

I succeeded him as a Member and President, and the Board now comprises :—

*R. J. Bond, I.S.O., A.A.S.A., A.C.I.S., President.*  
*C. F. H. Jenkins, M.A., Deputy President,*  
*C. R. Bunning, B.C.E., A.M.I.E. J. E. Lloyd,*  
*M.T.P.I., F.A.P.I. L. J. Park. R. D. Royce, B.Sc.*  
*(Agric.) F. C. Smith, J.P.*

### ADMINISTRATIVE OFFICER

Managing Secretary—H. E. Bancroft,  
A.A.S.A., A.C.I.S.

### RESERVES

#### New Vestings

A further National Park was vested in the Board during the year, *viz.* :—

Reserve 27575 of about 2,900 acres and situated alongside the Wannero Road (between Wanneroo and Yanchep), which was created a National Park and vested in the Board on the 23rd June, 1965.

#### Amendments to Existing Reserves

The following alterations to existing reserves were effected during the year :—

- (i) Reserve 18723, which is part of the Nornalup National Park, was increased by the addition of about 233 acres north of the South Coast Highway.
- (ii) Reserve A 14792 (Stirling Range National Park) was increased to 284,540 acres by the inclusion of Plantagenet Locations 6956, 6978, 6979 and 6980 in this

reserve. These locations represent cancelled Reserves 808 (previously vested in the Shire of Cranbrook) and Reserves 650, 809 and 810 (previously vested in the Board for Picnic and Camping).

An application has been made for the inclusion in the Kalbarri National Park (Reserve No. A 27004) of "The Loop" and "Mt. Curious" areas, along with reservation of the cliff area west of Kalbarri National Park and extending from the Kalbarri Townsite south to Bluff Point, and for its creation as a National Park for vesting in this Board.

**Reserves Vested in the Board**

National Parks and other Reserves totalling nearly 700,000 acres are vested in the Board and comprise the following :—

<i>National Parks</i>	acres
Kalbarri	358,000
Stirling Range	284,540
Nornalup	33,139
Porongorups	5,651
John Forrest	3,648
Lakes Nowergup-Neerabup	2,900
Kalamunda	919
Greenmount	127
Lesmurdie Falls	81
	689,005

<i>Other Reserves</i>	acres
Yanchep Park and Caves	6,210
Yanchep Flora and Fauna Reserves	727
Yanchep Beach Reserve	44
Serpentine Falls Park Lands	1,571
Hamelin Bay Reserve	366
Nornalup Flora Reserve	228
Boronia Reserve at Emu Point near Albany	115
Crawley Reserve	57
Araluen-Canning Dam Area	50
Penguin Island	50
Walpole Golf Course	35
Walpole Yacht Club	2
East Perth Cemetery (Disused Burial Ground)	12
Keane's Point	6
Garden and Mowing Services Headquarters	2
Small part of King's Park (Bernies)	1
Old Mill, South Perth	$\frac{1}{2}$
	9,477
Total	698,482

*Rangers Residence and Tearooms, Coalmine Beach, Nornalup National Park*



### General Vesting of Reserves

The Board feels that Reserves created as National Parks should be vested in this Board—such a procedure would facilitate the adoption of a common policy and lead to economies in administration and operation. Where desirable, it would welcome the co-operation of local Committees of advice.

Applications made for vesting of reserves in the Board and not yet finalised, are :—

- (i) "The Knoll" area at Gooseberry Hill.
- (ii) Reserves in the Peel Inlet and Lakes Clifton-Preston areas.
- (iii) Cape Le Grand and Recherche Archipelago area.
- (iv) Cape Arid and Twilight Cove area.
- (v) Bremer Range Area.
- (vi) Fitzgerald River area.
- (vii) Rough Range area near Exmouth Gulf.

Other areas considered most suitable for creation as National Parks are :—

- (i) Mt. Bruce-Wittenoom Gorge area.
- (ii) Barlee Range area.
- (iii) Dampier Archipelago area.
- (iv) Kimberley Reserves.
- (v) Mt. Lesueur area.
- (vi) Caves areas.

### Classification of Reserves

- (a) The Board is still persevering in its efforts to have all reserves vested in it declared as A Class.
- (b) It is pleasing to note that the new National Park in the Lakes Nowergup-Neerabup area has been classified A Class, and vested in the Board.

### GENERAL POLICY

The Board's general policy in relation to areas under its control is as follows :—

To so administer the lands under its control as to ensure the preservation of their natural beauty, the conservation of native flora and fauna, and the protection of geological and physiographical and other features of special interest.

To develop and improve certain areas for the purpose of promoting their enjoyment by the public.

It is intended to have prepared progressively, over-all plans for each of the major National Parks and Reserves vested in the Board ; so that orderly development may be carried out without undue interference with nature.

### ACT AND BY-LAWS

The Board was appointed under the Parks and Reserves Act, 1895-1955 and its powers are set out in this Act, including power to make by-laws.

A new set of by-laws was promulgated and published in the *Government Gazette* of the 29th May, 1963. These have since been amended as per amendments published in the *Government Gazettes* of the 22nd December, 1964 and the 10th June, 1965.

These by-laws are exhibited in appropriate parks and reserves.

It has been necessary to take proceedings against a few people for contravention of the Board's by-laws.



National Park Falls, John Forrest National Park, W.A.

## FINANCE

Following is a summary of receipts and payments (in consolidated form) for the past two years and attention is drawn to the fact that the figures for the year under review are subject to audit :—

RECEIPTS			
1963-64		1964-65	
£	£	£	£
21,479	National Parks and Reserves—Receipts	22,341	
49,230	Garden and Mowing Services—Receipts	47,428	
6,404	Miscellaneous Receipts	7,689	
54,000	Grants—Treasury	58,500	
568	Tourist Development Authority	9,636	
54,568		68,136	
131,681		145,594	
5,336	Plus Opening Credit Balance	5,197	
£137,017		£150,791	

PAYMENTS			
1963-64		1964-65	
£	£	£	£
ADMINISTRATIVE EXPENSES			
8,610	Head Office Salaries and Expenses	9,041	
935	Workers' Compensation and General Insurance	803	
1,886	Contributions to Wages Staff Endowment Fund	2,167	
1,327	Pay Roll Tax	1,371	
12,758		13,382	
NATIONAL PARKS AND RESERVES			
27,646	Wages	30,289	
14,075	Maintenance and Operating Costs	11,273	
26,319	Improvements, including Buildings, Plant and Equipment	36,734	
68,040		78,296	
GARDEN AND MOWING SERVICES			
33,213	Wages	32,199	
6,151	Maintenance and Operating Costs	6,177	
4,976	Buildings, Plant and Equipment	2,685	
44,340		41,061	
6,682	MISCELLANEOUS EXPENSES	7,373	
131,820		140,112	
5,197	Plus Closing Credit Balance	10,679	
£137,017		£150,791	

Once again segregation of financial records between the National Park Board General Account and those applicable to the Garden and Mowing Services has been effected, in order to present a more accurate indication of receipts and payments relating to the Board's principal function of administering national parks and reserves under its control, as distinct from other services to Government Departments and Institutions. The items Miscellaneous Receipts and Payments in each case include payments and recoups in respect of algae removed on behalf of the Swan River Conservation Board and also S.E.C. payments and recoups for electricity consumed at Aquatic Clubs in the Crawley Reserve.

The main variations were :—

### Receipts

(a) Loss of the State Housing Commission Multi-storey Flats contract for gardening and mowing and also mowing contract for the Swan and Woodside Hospitals affected receipts ; although this was counterbalanced to some extent by additional areas included in the Schools Mowing Service.

(b) Treasury Grants rose by £4,500 and T.D.A. assistance increased by £9,068.

(c) T.D.A. assistance was received as follows :—

	£
Glen Brook Dam	4,267
Bluff Knoll Change Rooms, Toilets and Water Supply	3,661
Coalmine Beach Public Toilets and Supplementary Water Supply	1,521
Concrete Barbecue Units	187
	£9,636

### Payments

(a) Salary increases and extra payments on account of relief staff for Officers proceeding on long service leave etc., affected payments under the heading of Head Office Salaries and Expenses.

(b) The employment of an additional Ranger and an extra maintenance man affected wages for National Parks, etc.

(c) Closure of the Power House at Yanchep Park when the S.E.C. power lines were extended to this Park, resulted in economies under maintenance and Operation Costs for National Parks, etc.

(d) Loss of the S.H.C. Multi-storey flats contract, etc. affected Garden and Mowing Services Receipts. Similarly this meant the employment of less labour on the expenditure side.

(e) Payment for improvements on national parks and reserves rose considerably during the year, chiefly as the result of building a water storage dam on Glen Brook in the John Forrest National Park, at a cost of just over £21,000.

## ROADS

The Main Roads Department continues to assist financially and give practical help on road construction and improvements within national parks and reserves. The roads concerned are referred to in the appendices to this report. In some cases the Local Authority of the district concerned carried out the work from finance provided by that Department.

## FIRE CONTROL AND FIRE LINES

The Forests Department helps in the planning and also clearing and maintenance (in some cases) of firelines and access tracks in certain national parks and reserves. The Main Roads Department has assisted in financing some of this work in the Nornalup National Park and it is possible that some of these access tracks will be developed to a good standard as tourist roads in time. Local Bush Fire Brigades have helped with controlled burning and the Plantagenet Shire Council assisted in the maintenance of firelines in the Porongorups National Park.

During the year, a third and final payment of £250 was made to the Forests Department by way of contribution towards construction of firelines and tracks in the Serpentine Falls Reserve. Those in the northern section of this park are complete and it is hoped the others will be constructed next year. Unforeseen problems have delayed this work.

A chain saw was acquired for the Ranger at the Stirling Range National Park and it is proposed equipping his vehicle with a Two-way Radio and providing similar equipment for Yanchep Park.

Arrangements are in hand to improve considerably, the existing fire control measures within the Nornalup National Park, involving the expenditure of in the



*Glen Brook Dam, John Forrest National Park, W.A.  
(Constructed 1965)*

*Picnic Shelter, Yanchep Park, W.A. (Erected 1965)*



vicinity of £6,000 on construction of fire-lines and access tracks, besides upgrading of existing ones. The planning, letting of contracts and supervision is being arranged by the Forests Department.

The Forests Department has been approached for preparation of a fire control plan for the Stirling Range National Park. In the meantime, it is hoped to have a fire-line constructed along the northern boundary of this Park in the near future.

Also an approach has been made to the Forests Department for help in planning a fire control and fireline system in the Kalamunda National Park.

## **WILD LIFE CONSERVATION AND PROTECTION OF FLORA**

### **Wildflower Conservation and Cultivation**

This Board is conscious of the necessity for limiting the volume of wildflowers being picked for display purposes. Consequently in an effort to avoid interfering with wildflowers growing naturally in the parks, it is setting aside areas in which to cultivate wildflowers for picking purposes. In addition, wildflower plots have been established at Yanchep Park and John Forrest National Park for the benefit of tourists and other visitors to these parks, who may participate in wildflower walks at either park.

### **Biological Survey of National Parks and Reserves**

As reported in the previous year, a botanical and ornithological survey is being undertaken at Yanchep Park, in conformity with the Board's policy of having carried out a biological survey of national parks and reserves of a similar nature. Plots have been pegged out at Yanchep in the major vegetation types, and these are being kept under constant observation.

### **National Park Rangers**

A further Ranger (mobile) was appointed during the year and his duties will include giving attention to protection of flora and fauna in the parks he is required to patrol.

### **Arbor Day Tree Planting**

Once again a tree planting ceremony was held at Yanchep Park on Arbor Day (1st July, 1964 in this case). Nearly 300 children

from the Wanneroo Primary School and St. Anthony's Convent attended and each planted a tree in the Park.

Members appreciated the fact that you were able to be present on this occasion and open the proceedings in the presence of a fairly large gathering which comprised the President of the Legislative Council, Board Members and their wives, the President and other representatives of the Shire of Wanneroo, the Commissioner for Main Roads, representatives of the Forests Department, Parents and Citizens' Association and others, including teachers and pupils.

Approximately 500 Eucalypts were planted by the adults and children present, but in all, about 3,000 trees were planted during the weeks preceding and following Arbor Day. These included :—

*Eucalyptus gomphocephala* (Tuart).

*Eucalyptus rudis*.

*Eucalyptus erythrocorys*.

*Eucalyptus punctata*.

*Eucalyptus camaldulensis*.

*Eucalyptus globulus*.

An inspection revealed that trees planted in the previous year are making good progress. They are in excellent condition and provide an attractive exhibit to all visitors.

### **Koalas**

A small colony of Koalas was established at Yanchep Park some years ago and the colony is gradually increasing in numbers.

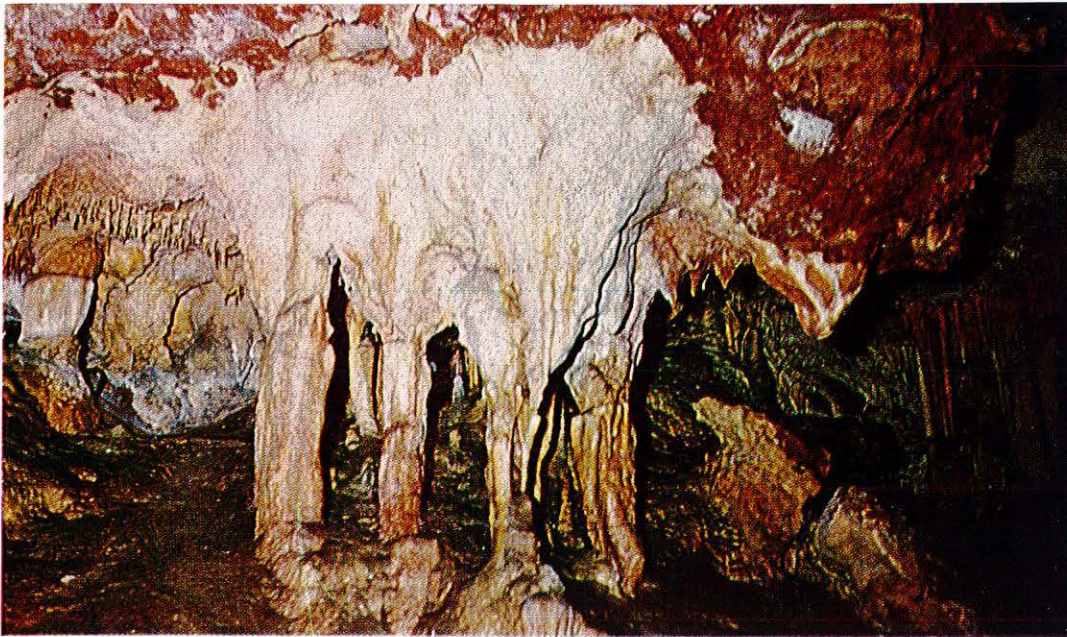
### **Kangaroos, Wallabies, Emus and Birds**

Black swans and ducks frequent the ornamental lakes at Yanchep Park and the former may be seen in large flocks on the Nornalup and Walpole Inlets in the Nornalup National Park. A few kangaroos, wallabies, emus, rosellas, parrots and finches are kept in captivity at Yanchep Park and these attract quite a lot of attention.

## **SPRINGTIME WILDFLOWER WALKS**

Overseas, interstate and intrastate visitors continue to patronise the wildflower walks instituted at Yanchep Park and John Forrest National Park. Wildflowers have been cultivated in centrally situated beds so that visitors will not have to travel long distances in order to see a representative collection





Beast of Burden, Yonderup Cave, Yanchep Park, W.A.

of the State's outstanding flora. September is usually the month in which these wild-flowers are at their best.

### SIGNPOSTING OF NATIONAL PARKS AND RESERVES

The signposting of national parks and reserves continues to receive attention, with particular emphasis on the protection of flora and fauna, and the prohibition of firearms and lighting of fires (except in fireplaces provided by the Board).

Unfortunately some people do not seem to realise these signs in many cases are expensive to prepare and erect, for there are instances of "shooting up," defacement, and sometimes actual removal of the signs. The culprits are difficult to catch and the Board would appreciate the co-operation of the public in reporting such acts.

### JOHN FORREST NATIONAL PARK

#### Falls

There are two water-falls on Jane Brook in this national park, which are known as the Hovea Falls and the National Park Falls. The latter falls are not far from the National Park Railway Siding and are depicted elsewhere in this report.

#### Glen Brook Dam

(a) The Public Works Department prepared plans and specifications, called tenders and supervised the construction of an earth dam on Glen Brook in the John Forrest National Park on behalf of the Board.

(b) This dam has a capacity of 32.52 million gallons, and in addition to providing a scenic attraction, the water impounded will be used for replenishing the swimming pool during the summer months and for watering of native flora, etc.

(c) The Tourist Development Authority contributed £4,267 towards the cost, which is expected to be a little over £21,000.

(d) It is pleasing to be able to report that the dam filled and first overflowed on the morning of the 5th August, 1965.

(e) Earlier in this report is a photograph taken shortly after completion of the dam.

### BUILDINGS AND FENCING

The erection of a shade house, potting shed and fencing of a nursery at John Forrest National Park was commenced during the year, but not completed until early in the following year.

Public toilets were provided at Coalmine Beach in the Nornalup National Park for the benefit of day visitors.

Another Staff Cottage (No. 7) was erected at Yanchep Park in addition to a block of toilets fronting Loch McNess, and change rooms near the West oval and the tennis courts. Also a large picnic shelter was erected near Loch McNess and a small shelter shed near the Tennis Courts. Filling was provided for No. 3 Oval and a further six rowing boats constructed.

A photograph of the type of large picnic shelter referred to above is shown in this report.



Scarlet Swamp Bottle Brush  
(*Beaufortia sparsa*)

X

✓

Blue Leschenaultia  
(*Leschenaultia biloba*)



Mottlecah  
(*Eucalyptus macrocarpa*)

✓

## **ELECTRICITY**

During the year light and power from the State Electricity Commission's electricity supply were extended to the Tearoom and attached residence at John Forrest National Park.

The three developed caves at Yanchep Park were connected to the State Electricity Commission's Supply and each cave was wired to take this type of current. Originally it was hoped to step down the current from 250 volts alternating current to 110 volts, but the unavailability of suitable globes rendered it necessary to retain the 250 voltage.

## **CAVES**

As referred to earlier, the three developed caves at Yanchep Park were connected to the S.E.C. electricity supply. Those concerned were the Crystal, Yonderup and Cabaret Caves.

Elsewhere in this report there is a photograph of an unusual feature in the Yonderup Cave.

## **NEW PLANT AND EQUIPMENT**

A Wheel Horse Tractor and rotor sweeper were acquired for the Crawley Reserve for cleaning up litter during the summer months, when a time factor for cleaning the beach grassed picnic areas is of importance.

A tip truck was on order for John Forrest National Park but not received until early in the following financial year.

Similarly a Massey-Ferguson Tractor, with front end loader and other attachments was on order for the Nornalup National Park, but not received until early in July, 1965. Also, a Landrover on order for the Ranger of this Park was not received until later still.

A chain saw was purchased for use by the Ranger of the Stirling Range National Park and arrangements were made to acquire a Two-way Radio for installation in this Ranger's Landrover for fire control purposes. (Also reported elsewhere.)

An Electric Welder and a set of Disc Harrows (for use on maintaining firebreaks) were bought for use at Yanchep Park and a Motor Scooter (for traffic and golf course control) was on order, but not received until early July, 1965.

## **STANDARD PICNIC FIREPLACES**

Another forty (40) standard concrete picnic fireplaces have been acquired and allocated to the various parks and reserves. These fireplaces are of American design and the Tourist Development Authority has provided financial assistance in their acquisition.

## **YANCHEP PARK GOLF COURSE**

Further improvements to the rough adjoining the grassed fairways and additional attention given to the grassed greens has made this attractively situated course very popular, particularly at weekends and on public holidays.

## **ALGAE REMOVAL**

It is pleasing to be able to report that the foreshore of the Crawley Reserve has been kept very clear of algae over the past year. This has been due to the co-operation existing between the Swan River Conservation Board and this Board ; whereby we employ workmen on behalf of the Swan River Conservation Board for algae clearance generally along the Swan River foreshore, and are recouped the cost.

## **PUBLICITY**

Action is in hand towards issuing an attractive folding leaflet on John Forrest National Park, which it is hoped will be followed by one for the Porongorups National Park and improved ones for Yanchep Park and the Stirling Range National Park in due course.

The press, radio stations and television telecasts still continue to give publicity on items of interest in national parks and reserves. However, notwithstanding that the efforts of the Organisations concerned are appreciated, it is felt that further publicity is needed in order to make the public aware of the facilities available for their enjoyment and recreation in these national parks and reserves, and also the need for conservation of flora and fauna. With this in mind, the Board hopes to extend its field of publicity and public relations in the future.

## **HISTORICAL PLAQUES**

A grant of £20 was made during the year to the Royal Western Australian Historical

Society (Inc.) as part cost of erecting a plaque near the Elm Trees at the junction of Williams Street and Mounts Bay Road, in order to commemorate the hundredth anniversary of the arrival in this State of Edward Timothy Hooley, J.P., M.L.C., M.L.A., who contributed to the early exploration of the North West of this State, etc.

## BOARD INSPECTIONS

Members of the Board have made periodical inspections of the national parks and reserves under its control. Naturally visits to those near the metropolitan area have been more frequent than to the outlying ones. However, visits have been paid to the following :—

Greenmount, John Forrest, Kalamunda, Nornalup, Porongorups, Stirling Range and Kalbarri (not the whole Board in this case) National Parks ; Crawley Reserve, Penguin Island Reserve, Serpentine Falls Reserve, Yanchep Park and the Boronia Reserve at Emu Point near Albany.

In addition, the Managing Secretary has made a number of inspections of most of the reserves concerned.

## APPENDICES

Additional information in regard to the individual national parks and reserves, etc. is detailed in appendix A to this report.

In addition, further information is given in Appendix B regarding the Garden and Mowing Services.

## GENERAL

As in the past, advice and assistance has been received from various Government Departments and Organisations, including Departments of Agriculture, Child Welfare, Forests, Government Stores, Harbour and Lights, Lands and Surveys, Main Roads Department, Metropolitan Water Board, Public Works, Town Planning and Treasury, and also the Government Printing Office, Lotteries Commission, Swan River Conservation Board, Tender Board and the Tourist Development Authority.

Members join with me in expressing our appreciation to the officers of the departments and organisations concerned.

The Board appreciates the assistance received from Shire Councils including those at Manjimup, Mt. Barker, Cranbrook, Margaret River, Mundaring, Kalamunda

and Wanneroo, which have co-operated throughout the year, as also have certain Bush Fire Brigades in those respective districts.

The interest of the Nornalup National Park Advisory Committee in matters associated with the Nornalup National Park is appreciated by the Board.

The Board would like to place on record its appreciation of the services rendered by former President, Mr. A. C. Shedley, M.B.E., B.Sc. (For.), who retired from the Board on the 30th June, 1965, after giving many years' valuable service firstly in his capacity as a Member, and then later as President of this Board. His professional qualifications, his administrative ability and his dedication to the work of the Board all combined to make his contribution worthwhile and valuable.

Once again the Members join me in expressing appreciation of the assistance and co-operation received from Head Office and outside staffs.

R. J. BOND  
PRESIDENT

*National Parks Board of Western Australia*

## Appendix A. National Parks and Reserves

### KALBARRI NATIONAL PARK

#### Control

This is the largest National Park under the control of the Board and was vested in late 1963. Its features have yet to be examined in some detail but pending an inspection, a plan is being prepared from aerial photographs for study of necessary fire control measures and future planning. An Honorary Ranger will be appointed early and steps taken to sign-post the Reserve in appropriate places, warning the public of the fire danger and stressing the necessity for conservation of flora and fauna.

#### Signs

Flora and fauna signs have been prepared ready for erection at selected points in this very large park.

#### Extra Territory

As mentioned in the main body of this report, an application has been made for adding additional territory of scenic value to this park.

## **STIRLING RANGE NATIONAL PARK**

### **Control**

This is the second largest national park under the Board's control and its immediate care is in the hands of Ranger F. A. Spratt, who for the time being operates from a caravan located at the junction of the Bluff Knoll access road and Chester Pass road. It is hoped to build a ranger's cottage during 1965-66, probably more centrally situated.

During the year, Plantagenet Locations 6956, 6978, 6979 and 6980, were included in this national park (Reserve A 14792), thus increasing its area to 284,540 acres.

### **Access and Other Roads**

#### *Roadway Connecting Chester and Red Gum Passes*

Considerable progress was made during the year on construction of this access road, which has been planned and financed by the Main Roads Department and will be of value for fire control purposes.

#### *Access Road to Bluff Knoll*

A section of this road has been reconstructed and gravelled by the Main Roads Department, ready for surfacing about the end of 1965. Completion of this work is of urgent necessity, as the section concerned is over a very steep part of the road.

#### *Access Road to Toolbrunup*

The Main Roads Department carried out further work on this road, thus making it more trafficable; although it will need further attention when funds are available.

#### *Salt River Road*

The local authority concerned has effected improvements to this road.

### **Amenities**

#### *Bluff Knoll Area*

It is reported that many people visit the Bluff Knoll picnic area and use the facilities provided, which include change rooms, toilets, picnic tables and fireplaces. The view from this spot is magnificent.

#### *Moingup Spring Area*

A source of water supply suitable for ablutions and toilets has been located in this area and thought is being given to the question of establishing a caravan and camping area nearby, along with a Ranger's residence and adjoining Tearoom.

#### *Red Gum Spring Area*

A hand pump and cover (to avoid water pollution) have been fitted to the small well in this area.

#### *Plant and Equipment*

During the year, the Ranger was supplied with a trailer for the Landrover and a chain saw. Action is in course towards the installation of a Two-way radio in his vehicle for fire control purposes. (Also referred to in main body of report).

#### *Fire Control*

The local Bush Fire Brigades are co-operating in the construction of firelines along the northern boundary of this park and the Forests Department has been approached for advice on a fire control plan for this large area.

#### *Visitors*

It is rather difficult to estimate the number of visitors to this park in a year, but there are certainly indications of its growing popularity.

## **NORNALUP NATIONAL PARK**

### **Control**

Ranger L. G. Gunson is in charge of this most attractive national park and he is stationed at Coalmine Beach, via Walpole.

### **Nornalup National Park Advisory Committee**

Messrs. Tom Swarbrick Jnr. (Chairman), C. Cooper, J. D. Hull, R. S. Palmer and J. H. Rate comprise this Committee and Mr. Rate also carries out secretarial duties for the Committee. Their value is fully appreciated in submission of recommendations and conveyance of local viewpoint to the Board on problems arising in connection with this very important national park.

### **Roads**

#### *Access Road to Coalmine Beach*

This road has now been reconstructed and primed ready for sealing later in 1965. The work was carried out by the Shire of Manjimup from funds provided by the Main Roads Department.

#### *Hilltop Road and Tingle Drive*

Further work has been carried out on these access roads, north of the South Coast Highway, thus making them trafficable all the year around up to as far as the large hollow Red Tingle Tree at least, which is a Tourist attraction.

### *Firelines and Access Tracks*

Further firelines and access tracks have been constructed in the Mt. Clare-Deep River area and it is planned carrying out during 1965/66 a major programme of construction and reconstruction work on firelines and access tracks in an area north of the South Coast Highway. The aim is not only to protect this heavily timbered country, with its fine stands of Karri, Tingle, etc., but also to afford some protection for adjoining land owners.

### *Controlled Burning*

The Walpole Bush Fire Brigade has co-operated in the carrying out of controlled burning in the Mt. Clare area and the Board has recouped the cost.

### **By-laws**

(a) The Board's by-laws are exhibited at Coalmine Beach.

(b) It became necessary to take action against a few persons for unauthorised

camping in "The Depot-Peppermints" area, in contravention of the Board's by-laws.

### **Caravan and Camping Area near Coalmine Beach**

#### *Caravan and Tent Sites*

These sites were occupied by a fairly large number of caravans and campers during the year, the busy periods being mainly over the Christmas-New Year and Easter holidays.

#### *Amenities Block*

Improvements were effected to the shower cubicles and plans are in progress for conversion of the hot water system to metered Kleenheat gas.

#### *Public Toilets*

A small block of toilets adjacent to Coalmine Beach was completed during the year and should meet the requirements of day visitors, without the necessity for them to use those provided in the nearby caravan and camping area as in the past.



*On the shores of Loch McNess, Yanchep Park*

#### *Water Supply in Coalmine Beach Area*

Following the provision of a second 5,000 gallon overhead tank for servicing the amenities block, toilets, etc., plans were well advanced for the establishment of a supplementary water supply (drawing water from Collier Brook) and for reticulation of the caravan and camping area. It will still be necessary to use bore water during the winter months, when the brook water becomes discoloured through peat stain.

#### *Launching Ramp at Coalmine Beach*

A concrete launching ramp has been constructed west of the swimming area and should meet the requirements of owners of small boats.

#### *Vehicles*

Orders have been placed for a Landrover and a Massey-Ferguson Tractor with attachments. The former will make the Ranger more mobile for fire control purposes and the latter will be of value in regrading and maintenance generally of firelines and access roads, etc.

## **PORONGORUPS NATIONAL PARK**

### **Control**

Ranger F. A. Spratt visits this park periodically in conjunction with his duties in the Stirling Range National Park, and carries out essential work necessary.

### **Additional Territory**

Negotiations are still proceeding towards the acquisition of about 319 acres on the west side of this park. The area concerned is good wildflower country, with a nice sprinkling of Banksias, Hakeas and Kingias.

### **Firelines**

Regrading of firelines in this park was carried out by the Shire of Plantagenet by arrangement, and the Board recouped the cost.

## **JOHN FORREST NATIONAL PARK**

### **Control**

Superintendent G. R. Edwards is in charge of this park and has under his control a small staff of four workmen. He resides on a property adjoining the east side of the park.

### **Fire Control**

Controlled burning was carried out in certain sections of the park, as also was regrading of firelines.

### **Roads and Parking Areas**

The Main Roads Department has been approached for assistance in planning of improvements to the main access roadway and parking areas near the tearooms, in order to meet the increasing motor traffic.

### **Glen Brook Dam**

This water storage dam of earth construction, and having a capacity of 32.52 million gallons was completed about March, 1965, and first overflowed on the 5th August, 1965 as reported in the main body of this report.

### **Electricity**

Alterations and extension of S.E.C. light and power to the Tea Room and adjoining residence were finalised during the year, at considerably below the original estimate supplied.

### **Shade House, Potting Shed and Nursery Fence**

The materials were on hand and erection of these facilities was part completed during the year.

### **Vehicles**

A 3 ton tip truck was on order but not received until early in 1965/66.

### **Wildflower Gardens and Springtime Wildflower Walks**

Additional garden plots have been provided, further wildflowers planted, more wildflower identification name-plates acquired and Springtime Wildflower conducted walks continued in season.

## **NATIONAL PARK NEAR LAKES NOWERGUP AND NEERABUP**

### **Vesting**

This national park of about 2,900 acres and situated alongside the Wanneroo Road (between Wanneroo and Yanchep) was placed under the control of the Board by vesting order dated the 23rd June, 1965, but advice of vesting was not received until early in the new financial year.

### **Control**

It is proposed placing this park under the supervision of the Superintendent of Yanchep Park.

### **Fire Control**

Initially fire breaks will be constructed before the next closed bush fire season.

## **KALAMUNDA NATIONAL PARK**

This national park was vested in the Board during the previous financial year and the Forests Department has been approached for assistance in preparation of a fire control plan.

## **GREENMOUNT NATIONAL PARK**

### **Control**

Superintendent G. R. Edwards of John Forrest National Park has been placed in charge of this small nearby park, which is of scenic importance.

### **Access Road and Parking Area**

A sealed access road has been constructed by the Main Roads Department and further attention is being given to parking space.

## **LESMURDIE FALLS NATIONAL PARK**

### **Control**

A mobile ranger was appointed during the year and it was envisaged that part of his duties would include control and improvements in this park. However leave commitments elsewhere meant that he spent most of his time since appointment, in relieving other rangers.

### **Mobile Kiosk**

This kiosk operates mainly in the Spring-time, when the demand justifies its operation.

### **Amenities**

(a) An additional picnic area was provided during the year.

(b) Fireplaces, picnic tables and rubbish bins have been located in the picnic areas which are in close proximity to the parking area.

(c) The toilets need replacing once finance is available.

### **Parking Area**

There is limited space only for parking purposes and the terrain makes it difficult for enlarging the parking area.

### **Walking Paths**

It is hoped to construct a path from the falls lookout down to the foot of the falls during the coming year.

## **YANCHEP PARK**

### **Control**

Superintendent W. J. Burnett is in charge of Yanchep Park, the Yanchep Beach Reserve and a few small nearby reserves. His office staff and workmen total 18.

### **Roads and Parking Area**

Alterations to the entrance road in the vicinity of the Yanchep Park Office is envisaged and increased parking space will be required to meet the demand of visiting motorists.

### **Golf Course**

The grassed greens and fairways have been improved, as also has the adjoining rough. The demand for booking is increasing, particularly at weekends and on public holidays.

### **Tennis Courts**

(a) The demand for hire of tennis courts has declined further, notwithstanding the courts have been improved, and this can only be put down to a waning of interest in tennis.

(b) A new shelter shed was erected for the convenience of players and a second one is on order.

### **Playing Fields**

Further filling has been provided on a third playing field being constructed not far from Cabaret Cave. Further grassing will be carried out in the near future and this ground should be ready for use in the coming year.

### **Wildflower Gardens and Wildflower Walks**

The wildflower beds have been added to and improved. Additional planting has been carried out and further name-plating arranged. The conducted wildflower walks are still held, mainly during the Springtime. The wildflowers are usually at their best during September; although a few varieties are in flower almost throughout the year at Yanchep.

### **Lighting of Caves**

The State Electricity Commission electricity supply was connected to the Cabaret, Crystal and Yonderup Caves, which were rewired (also reported in main body of report).



### **Change Rooms and Toilets**

A new block of change rooms and toilets was erected close to the West Oval and the tennis courts. Also a block of toilets was erected adjacent to Loch McNess.

### **Water Supplies**

The water main between Yanchep Inn and Gloucester Lodge was renewed and some piping supplied for the golf course.

### **Boats**

A further six rowing boats were constructed during the year at Riverbank and arrangements are in hand for another launch to be built by the Harbour and Lights Department for use on Loch McNess.

### **Yanchep Inn**

Further repairs and renovations have been carried out to this building and external and internal painting is in progress.

### **Gloucester Lodge**

(a) Alterations and improvements have been effected and the building was painted during the year.

(b) There was a beneficial change in tenancy during the year.

### **McNess Guest House**

A cool room has been added to this building.

### **Plant and Equipment**

A set of disc harrows was acquired for maintenance of firelines and an electric welder was purchased for general use, including pre-fabrication of picnic shelter sheds, etc.

### **Picnic Shelter Sheds**

One such shelter has been erected near Loch McNess and the material ordered for two more, one each to be sited near the East and West Ovals.

### **Koalas, Kangaroos, Emus, Parrots and Finches**

Exhibits of these are kept at Yanchep Park and attract considerable interest.

### **Leaflet**

An information leaflet on this park is issued free to visitors.

### **Multi-Coin Telephone Box and Postal Arrangements**

(a) After protracted negotiations the P.M.G. finally agreed to the installation of a multi-coin telephone box in the Park, which was provided during the year.

(b) The Postal Department was good enough to arrange a postal delivery in the park during the year.

## **YANCHEP BEACH RESERVE**

### **Control**

Exercised by Superintendent Burnett in conjunction with Yanchep Park.

### **Roads and Parking Areas**

These have been rebuilt and sealed.

### **Amenities**

A kiosk is operated, whilst change rooms and toilets are available for use by campers ; but consideration will be given towards improving these facilities, once the area has been replanned this coming year.

## **BORONIA RESERVE AT EMU POINT NEAR ALBANY**

This reserve has been signposted concerning the prohibition on picking of wild-flowers and dumping of rubbish.

## **SERPENTINE FALLS RESERVES**

### **Control**

At present a part time Ranger (W. G. Baldwin) looks after the change rooms and toilets.

### **Fire Control**

(a) A third and final £250 was paid over to the Forests Department during the year towards meeting the cost of fireline construction work undertaken by that Department on behalf of this Board.

(b) The firelines to the north of the Serpentine River have been completed, but unfortunately problems arose and delayed completion of those on the South side.

### **Toilets**

The overhead cisterns in these toilets were replaced with low level ones during the year, as the former were proving inefficient.

## **HAMELIN BAY RESERVE**

### **Control, etc.**

Mr. A. S. Wood, who along with his wife leases a portion of this reserve as a holiday resort, also acts as an Honorary Ranger.

### **Amenities**

The Board's change rooms and toilets are maintained by the Lessees for a small consideration.

#### **Access Road and Parking Area**

Following protracted negotiations, a small section of the access road through the leased area has been primed ready for sealing and the Board has contributed £90 towards the cost of having the parking area sealed by the local Shire.

### **CRAWLEY RESERVE**

#### **Control**

Caretaker/Ranger P. W. Daley is in residence at this Swan River beach reserve.

#### **Crawley Tea Rooms**

Once a site is finalised in the near future as anticipated, tenders will be invited for the lease of this site, on an understanding that the lessee will arrange the erection of a modern restaurant/tearoom thereon.

#### **Toilets**

The overhead cisterns in the three blocks of toilets were not functioning properly and consequently they have been replaced with low level ones.

#### **Plant and Equipment**

A Wheel Horse Tractor and rotor sweeper have been acquired for speedy clearing up of litter left by the public on the grassed sections of this reserve. It is surprising how early some visitors arrive at the reserve on hot mornings and thus impede cleaning of the area following its use on the previous day and evening.

#### **General**

(a) Some levelling was carried out in the vicinity of the Sea Scouts buildings and bamboo removed. Also a vehicle compound was fenced.

(b) The larger of the two playing fields is ready for use and negotiations are progressing regarding its use by the University of W.A. and for junior football.

(c) This Board leases sites in this Reserve to the Royal Perth Yacht Club, Mounts Bay Sailing Club, Perth 14 ft. Dinghy Sailing Club, 1st Pelican Point (Sea Scout) Group and Hale School. Also the University of W.A. has the use of a boat shed site on the foreshore.

### **ARALUEN—CANNING DAM AREA**

This reserve comprises a long narrow strip of territory lying between McNess Drive and the Canning River, and extending from



*A view near Crystal Cave, Yanchep Park W.A. (Red and Green Kangaroo Paws, Smoke Bush, Blackboys and Tuarts)*

the vicinity of Araluen to the boundary of the Canning Dam reserve.

### **PENGUIN ISLAND RESERVE**

#### **Control**

A portion of this island is leased for holiday resort purposes to Mr. and Mrs. R. G. Carlberg and Mr. Carlberg acts as an Honorary Ranger for the reserve, which is frequented by penguins.

#### **Holiday Amenities**

The Lessees are continuing with their programme of improving the facilities at this island. They operate the ferry service between the island and the mainland. The Board is going to meet the cost of reconditioning a small block of toilets for use of day visitors to the island.

#### **Fauna (Penguins)**

The Honorary Ranger has provided nesting facilities for the penguins. The Board has had signs erected in relation to protection of penguins and prohibition of dogs on the island.

### **EAST PERTH (DISUSED) CEMETERY**

A full-time gardener is employed on maintenance of the grounds at this cemetery

where many of the early pioneers of this State are buried.

Water reticulation was improved during the year and further planting of shrubs carried out.

An approach has been made for assistance in regard to re-surfacing the pathways.

### **KEANE'S POINT RESERVE**

This reserve is leased to the Royal Freshwater Bay Yacht Club. The grounds are maintained in an attractive condition and this progressive Club is providing facilities for boating enthusiasts to enjoy to the full, aquatic activities on the Swan River.

### **SMALL PORTION OF RESERVE A.1720 (KING'S PARK)**

A small portion of this reserve, adjoining Mounts Bay Road, is vested in this Board and Mr. B. S. Hardwick holds a tenancy over the land, on which he has established a kiosk known as "Bernies".

### **OLD MILL RESERVE, SOUTH PERTH**

This small reserve at the South Perth end of "The Narrows Bridge", is leased to Messrs. H. L. Brisbane and Wunderlich Ltd., who have restored the Old Mill and Cottage and established a small museum of historical interest.

## **APPENDIX B.—GARDEN AND MOWING SERVICES**

### **GARDENING SECTION**

#### **Control**

Mr. A. G. Eaton assumed control of this section on the 8th March, 1965 following the resignation of Mr. R. D. Green.

#### **Establishments Maintained**

A gardening service is rendered to thirty-two Government establishments (previous year thirty-one). This is notwithstanding the loss from the 1st January, 1965 of the contract for maintaining the grounds of 8 State Housing Commission Multi-Storey Flats.

#### **Other Supervision Work**

In addition, the Supervisor of Gardens is in charge of the gardening staff at Government House and Parliament House as distinct from this Board's operations and he also

acts in an advisory capacity at the Crawley Reserve, East Perth Cemetery, John Forrest National Park, Yanchep Park and the Zoological Gardens.

### **MOWING SERVICES**

#### **Control**

Foreman E. S. Walters is in charge of this section, which operates from a Depot established at Jarrah Road, Victoria Park.

#### **Mowing**

##### *School Grounds and Playing Fields*

At the 30th June, 1965, a mowing service was being provided at 170 schools, as against 167 at the close of the previous year.

##### *Other Government Establishments*

Loss of the State Housing Commission Multi-Storey Flats contract and a few Hospitals, resulted in a reduction in the number of establishments being serviced; the figures being 57 as at the 30th June, 1965, compared with 73 a year earlier.

#### **Garage and Parking Space**

Further garage accommodation (60 ft. x 25 ft.) was erected during the year, in order to house the growing number of vehicles. Surfacing of the hard-standing area was deferred temporarily.

#### **Vehicles and Mowers**

A further 30 cwt. Motor Truck and Massey Ferguson Tractor were ordered but not received until early in the following year.

The existing tractors were each fitted with an improved type of weather-proof cab, flashing lights, etc.

Also a Seers Overlander Mower was purchased for use with a tractor.

In addition, 2, 20 in. Alroh 4-Stroke Mowers, 1, 24 in. Self Propelled Rotary Mower, and 4 small Rotary Mowers (replacements) were purchased.

Arrangements were made for disposal through the Tender Board of unserviceable units.

### **FUTURE CONTROL OF GARDEN AND MOWING SERVICES**

An official approach has been made seeking approval for the Board to hand these services over to a more appropriate authority or department, so that the Board may concentrate its efforts towards the important task of administering the national parks and reserves under its control.