



*Pink Verticordia Kalbarri National Park*

# NATIONAL PARKS BOARD OF WESTERN AUSTRALIA

## ANNUAL REPORT

FOR THE YEAR ENDED 30TH JUNE, 1966

FOREST SCIENCE LIBRARY  
DEPARTMENT OF ENVIRONMENT  
AND CONSERVATION  
WESTERN AUSTRALIA

# NATIONAL PARKS BOARD OF WESTERN AUSTRALIA

FOR THE YEAR ENDED 30TH JUNE, 1966

Cover Photo by Mr. E. Pederick

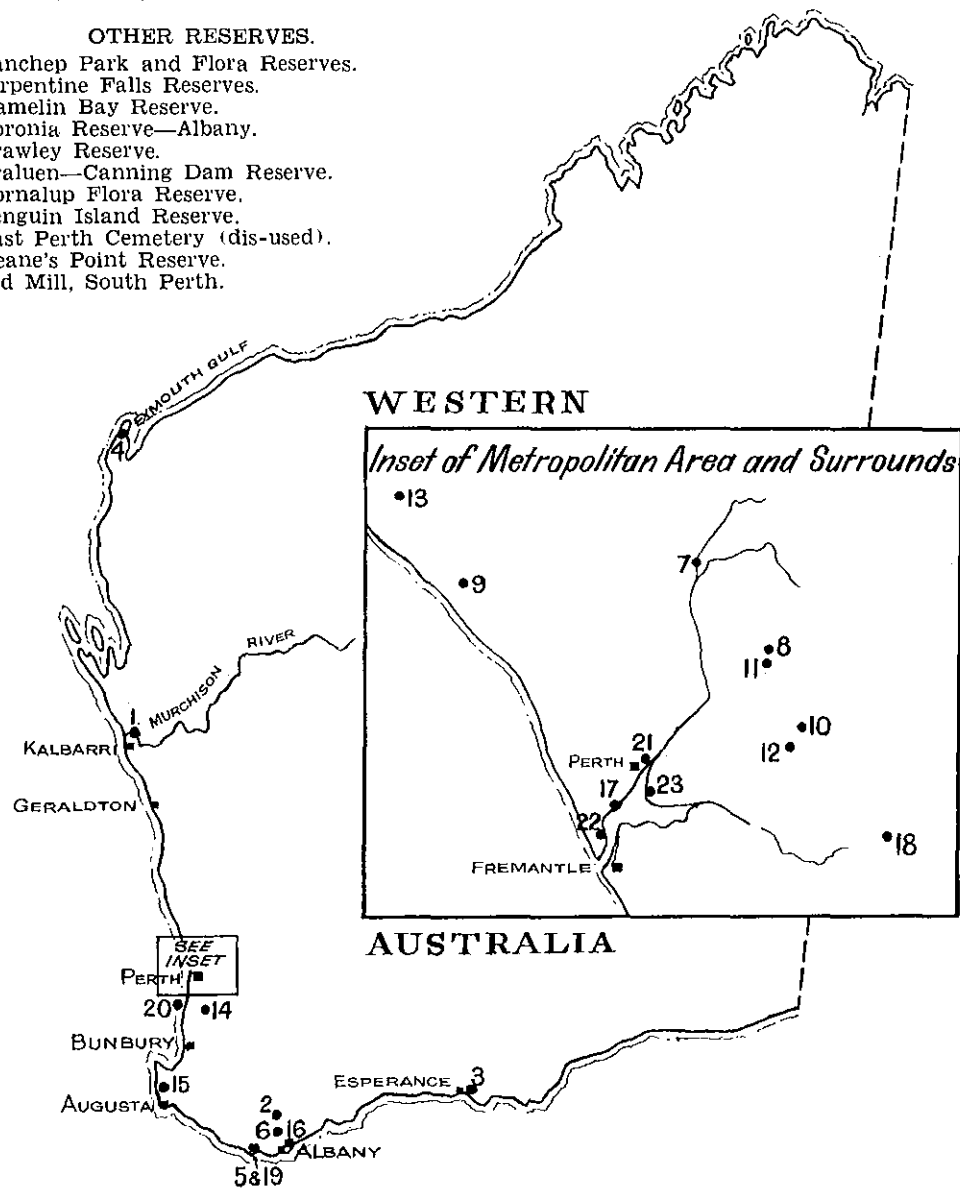
LOCATION OF NATIONAL PARKS AND OTHER RESERVES.

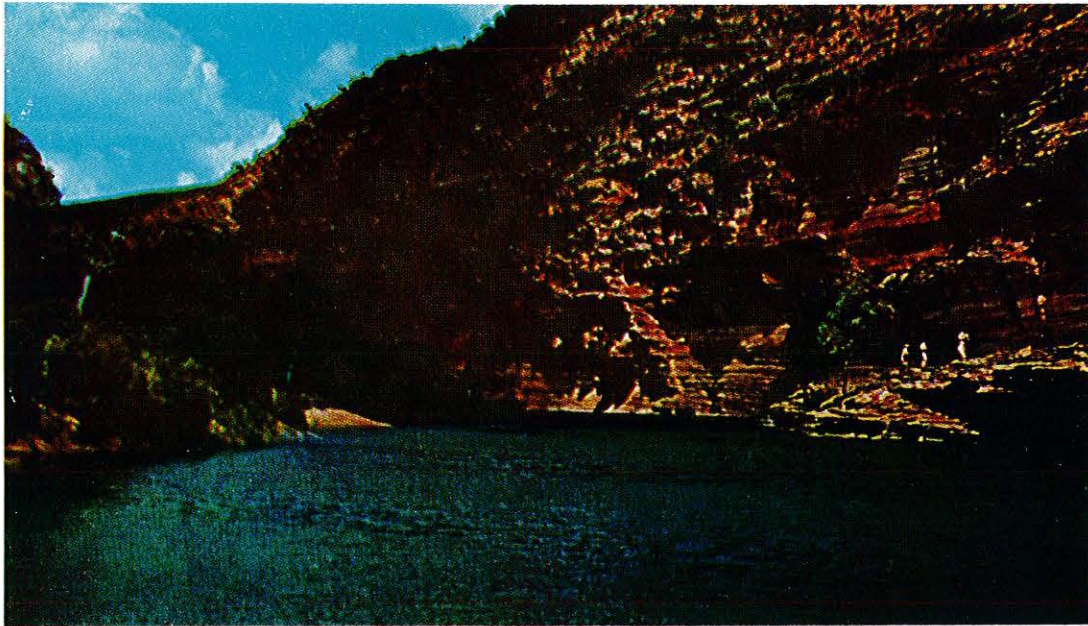
NATIONAL PARKS.

1. Kalbarri.
2. Stirling Range.
3. Cape Le Grand.
4. Cape Range.
5. Nornalup.
6. Porongorup.
7. Walyunga.
8. John Forrest.
9. Neerabup.
10. Kalamunda.
11. Greenmount.
12. Lesmurdie Falls.

OTHER RESERVES.

13. Yanchep Park and Flora Reserves.
14. Serpentine Falls Reserves.
15. Hamelin Bay Reserve.
16. Boronia Reserve—Albany.
17. Crawley Reserve.
18. Araluen—Canning Dam Reserve.
19. Nornalup Flora Reserve.
20. Penguin Island Reserve.
21. East Perth Cemetery (dis-used).
22. Keane's Point Reserve.
23. Old Mill, South Perth.





*Murchison River Gorge—Kalbarri National Park*

## NATIONAL PARKS BOARD OF WESTERN AUSTRALIA

To the Honourable W. S. Bovell, M.L.A.,  
Minister for Lands.

It is with pleasure that I submit on behalf of the National Parks Board of Western Australia this report concerning its main activities over the past year ended the 30th June, 1966.

This has been another year of substantial progress in administration and protection of the areas controlled.

Possibly the two main items of interest have been the appointment of a Consultant Architect and a large-scale effort towards providing access roads, tracks and firelines within the Nornalup National Park, and the Board is indebted to the Forests Department for its effort in planning and undertaking organisation of this contract work in conjunction with its own works programme.

### BOARD MEMBERSHIP

Membership remained unaltered at :—

*R. J. Bond, I.S.O., A.A.S.A., A.C.I.S., President.*

*C. F. H. Jenkins, M.A., Deputy President.*

*C. R. Bunning, B.C.E., A.M.I.E.*

*J. E. Lloyd, M.T.P.I., F.A.P.I.*

*L. J. Parks,*

*R. D. Royce, B.Sc. (Agric.).*

*F. C. Smith, J.P.*

There are two sub-committees, namely the Finance Committee and the Works Committee, each comprising the President, Deputy President and two other Board members.

### ADMINISTRATIVE OFFICER

Managing Secretary—H. E. Bancroft,  
A.A.S.A., A.C.I.S.

### RESERVES

#### *New Vestings*

Cape Le Grand National Park (Reserve A22795) of about 39,500 acres near Esperance and Cape Range National Park (Reserve 27288) of 33,171 acres near Exmouth were vested in the Board during the year and a deposit was paid on a property of about 4,000 acres near Bullsbrook, which is being acquired for establishment of the Walyunga National Park.

#### *Amendments to Existing Reserves*

Swan Location 7953 of about 212 acres was added to Yanchep Park (Reserve A9868) during the year and a check with the Department of Lands and Surveys resulted in the area of Penguin Island being reduced from 50 to 31 acres.

*Reserves Vested in the Board*

National Parks and other reserves totalling 775,346 acres are vested in the Board and comprise the following :—

<i>National Parks</i>	<i>Acres</i>	
Kalbarri ....	358,000	
Stirling Range ....	284,540	
Cape Le Grand ....	39,500	
Cape Range ....	33,171	
Nornalup ....	33,139	
Porongorups ....	5,651	
Walyunga ....	about 4,000	
John Forrest ....	3,648	
Neerabup ....	2,900	
Kalamunda ....	919	
Greenmount ....	127	
Lesmurdie Falls ....	81	
	—————	765,676
<i>Other Reserves</i>	<i>Acres</i>	
Yanchep Park and Caves ....	6,422	
Yanchep Flora and Fauna Reserves ....	727	
*Yanchep Beach Reserve ....	44	
Serpentine Falls Park Lands	1,571	
Hamelin Bay Reserve ....	366	
Nornalup Flora Reserve ....	228	
Boronia Reserve at Emu Point near Albany ....	115	
Crawley Reserve ....	57	
Araluen Canning Dam Area	50	
Walpole Golf Course ....	35	
Walpole Yacht Club ....	2	
Penguin Island ....	31	
East Perth Cemetery (Disused Burial Ground) ....	12	
Keene's Point ....	6	
†Garden and Mowing Services Headquarters ....	2	
Small part of King's Park (Bernies) ....	1	
Old Mill, South Perth ....	½	
	—————	9,670
Total ....	—————	775,346

\* Control expected to pass to Shire of Wanneroo in near future.

† Control expected to pass to Minister for Works in near future.

*General Vesting of Reserves*

It is understood that there are about 37 reserves, ranging from 2 acres up to 8,646 acres, which have been created national parks and are either not yet vested in any authority or have been vested in some authority other than the National Parks Board of Western Australia. The Board feels that before reserves are created as national parks thought should first be given as to whether they are of sufficient size to justify giving them "a national character" and then when they have passed this test and have been created national parks they should be vested in this Board. Such a procedure would facilitate the adoption of a common policy with economy in administration and general operation of the national parks. The appointment of local committees would receive consideration where thought desirable on the question of local advice.

Applications for vestings not yet finalised are :—

- (i) "The Knoll" area at Gooseberry Hill.
- (ii) Reserves in the Lakes Clifton and Preston area.
- (iii) Recherche Archipelago area.
- (iv) Cape Arid and Twilight Cove area.
- (v) Bremer Range area.
- (vi) Fitzgerald River area.
- (vii) Nambung National Park and adjacent areas.
- (viii) Pt. Coulomb (Dampier Land area).
- (ix) Drysdale River areas.
- (x) Barlee Range area (Reserve 26808).
- (xi) Reserve near Tammin.
- (xii) Cowaramup Bay Reserve.
- (xiii) Reserve A.8434 (Mammoth and Lake Caves area).
- (xiv) Part of Plantagenet Location 4521. (M.E.T. Hancock) for incorporating in the Stirling Range National Park, because of the presence of Cranbrook Bells on the property.

Other areas thought most suitable for creation as national parks and vesting in the Board are :—

- (i) Mt. Bruce-Wittenoom Gorge area.
- (ii) Dampier Archipelago area.
- (iii) Kimberley Reserves.
- (iv) Mt. Lesueur area.
- (v) South-West cave areas.

### Classification of Reserves

Unfortunately all of the reserves vested in this Board have not yet been classified "A" Class, notwithstanding efforts in this direction. During the year Kalamunda National Park (Reserve 21314) was declared "A" Class.

### NATIONAL PARKS AND RESERVES COMMITTEE

This Board will make a maximum contribution to the deliberations of the special Inter-departmental Committee recently appointed to report on the control and management of flora and fauna reserves and national parks generally and to consider ways and means by which some co-ordination of activities might be facilitated. The Board believes that with the rapid increase in the development of agricultural land, and the rise in population in city and country areas there is necessity to ensure that adequate areas are set aside for flora and fauna protection, and for limited controlled public access to the more attractive scenic features. In this regard it is pleasing to note the recent vestings and the Board will give special attention to the administration of these areas.

The Board believes that some form of unified control of our reserves is vitally necessary because all have the common need of conservation.

### THE AUSTRALIAN ACADEMY OF SCIENCE REPORT ON NATIONAL PARKS AND RESERVES OF W.A.

The above report first appeared in 1962 when duplicated copies only were available for restricted distribution. Following a widespread public demand, a sub-committee of the Royal Society of W.A. chaired by Mr. C. F. H. Jenkins (our Deputy President) arranged for the report to be revised and published with appropriate illustrations. The cost was met jointly by the Australian Academy of Science and the National Parks Board of W.A.

### GENERAL POLICY

The Board's general policy in regard to areas under its control is: "To so administer the lands under its control as to ensure the preservation of their natural beauty, the conservation of native flora and fauna, and the protection of geological and physiographical and other features of special interest.

"To develop and improve certain areas for the purpose of promoting their enjoyment by the public."

It is intended to prepare progressively over-all plans for each of the major national parks and reserves vested in the Board, so that orderly development may be carried out without undue interference with nature. The Board will visit each area in turn to familiarise itself with the features and problems and to confer with appropriate local authorities and district interests.

### ACT AND BY-LAWS

The Board was appointed under the Parks and Reserves Act, 1895-1955, and its powers are defined in this Act, including power to make by-laws. Formerly, the State Gardens Board administered the reserves until reconstituted the National Parks Board of Western Australia when it was made a body corporate, by proclamation dated the 4th April, 1956, and published in the *Government Gazette* of the 13th April, 1956.

A new set of by-laws was approved and published in the *Government Gazette* on the 29th May, 1963, and amendments have been published in the *Government Gazettes* of the 22nd December, 1964, and the 10th June, 1965.

These by-laws are exhibited in appropriate parks and reserves.

### FINANCE

A summary of receipts and payments (in consolidated form) for the past two years follows and it should be noted that those relating to the year under review are subject to audit:—

RECEIPTS					
1964-65			1965-66		
\$	\$		\$	\$	
44,682	....	National Parks and Reserves—Gen. Receipts	47,219		
94,856	....	Garden and Mowing Services—Gen. Receipts	100,584		
15,278	....	Miscellaneous Receipts	19,352		
	154,816			167,155	
		Grants—			
117,000	....	Treasury	148,104		
19,272	....	Tourist Dev. Authority	752		
100	....	State Lotteries Comm.	3,000		
		Main Roads Department			
	136,372			151,856	
	291,188			319,011	
		Cr. 10,394			
		Plus Opening Credit Balance		Cr. 21,358	
	\$301,582			\$340,369	

<b>PAYMENTS</b>				
1964-65			1965-66	
\$	\$		\$	\$
		<b>ADMINISTRATIVE EXPENSES</b>		
18,082	....	Head Office Salaries and Expenses .....	20,369	
1,606	....	Workers' Compensation and General Insurance....	1,545	
4,334	....	Contributions to Wages Staff Endowment Fund....	4,430	
2,742	....	Pay Roll Tax .....	3,065	
		26,764	29,409	
		<b>NATIONAL PARKS AND RESERVES</b>		
60,578	....	Wages .....	71,231	
22,546	....	Maintenance and Operating Costs .....	28,057	
73,468	....	Improvements, including Buildings, Plant and Equipment .....	98,129	
		156,592	197,417	
		<b>GARDEN AND MOWING SERVICES</b>		
64,398	....	Wages .....	71,357	
12,354	....	Maintenance and Operating Costs .....	14,142	
5,370	....	Buildings, Vehicles, Plant and Equipment .....	9,946	
		82,122	95,445	
		14,746	17,737	
		280,224	340,008	
		Cr. 21,358 Plus Closing Balance .....	Cr. 361	
		\$301,582	\$340,369	

This will be the last time it will be necessary to segregate the financial records between the National Parks Board General Account and those applicable to the Garden and Mowing Services, because control of the latter services passes to the Public Works Department on the 1st July, 1966. Segregation of these accounts has been necessary in order to present a more accurate picture of the transactions relating to the Board's principal function of administering national parks and reserves under its control, as distinct from other services to Government Departments and Institutions. The items Miscellaneous Receipts and Miscellaneous Payments in each case contain recoups and payments in respect of algae removal from the Swan River foreshore on behalf of the Swan River Conservation Board and also recoups and payments respectively in relation to S.E.C. electricity consumed at aquatic clubs in the Crawley Reserves.

The main variations were :—

#### Receipts

(a) Yanchep Park receipts showed a fairly substantial increase, Garden and Mowing Services receipts were higher, as were also Swan River Conservation Board receipts.

(b) Under the heading Grants, the Treasury Grant rose and included \$7,254 special grant made available for down payment on the property acquired as the Walyunga National Park. In addition a grant of \$3,000 was received from the Main Roads Department in connection with the construction of access roads in the Nornalup National Park. Subsidies received from the Tourist Development Authority dropped considerably, due to a change in policy.

#### Payments

(a) Under Administrative Expenses, salary increases and the employment of a Consultant Architect on a retainer meant a rise in Head Office salaries. Also Pay Roll Tax payments rose.

(b) The appointment of another Mobile Ranger and an Assistant Ranger in the Nornalup National Park, coupled with the employment of an extra maintenance worker and one temporary labourer at John Forrest National Park and general wage increases, has meant a rise in the annual wage bill for national parks and reserves.

(c) Similarly maintenance and operating costs have risen in a number of major national parks and reserves, such as Yanchep Park, Nornalup National Park, Stirling Range National Park and Sundry Reserves.

(d) Improvement in National Parks and Reserves, including down payment of \$7,254 on a property for national park purposes (Walyunga National Park) and expenditure on buildings, vehicles, plant and equipment, rose considerably. The largest single item of expenditure under this heading was over \$10,500 spent on access roads and tracks (also used as firelines) in the Nornalup National Park.

(e) General expansion of the schools' mowing service, along with increased wage rates, was reflected in rising figures in the Garden and Mowing Services payments. Also it became necessary to purchase two motor trucks, a new tractor and some additional mowers.



*Footbridge above Lesmurdie Falls*

#### CONSULTANT ARCHITECT

Mr. R. J. Ferguson, A.R.A.I.A., was appointed to the position of Consultant Architect to the Board from the 1st November, 1965, on the recommendation of the Town Planning Commissioner, who is also a member of the Board. Mr. Ferguson is being entrusted under direction with planning orderly development of parks and ensuring that future buildings are architecturally acceptable. So far he has been responsible for planning a new entrance and office at Yanchep Park, along with a Superintendent's house, two staff houses and improvements to toilets at Yanchep Inn and also a residence and public toilets in the Stirlings.

#### ROADS GENERALLY

The Main Roads Department has again rendered financial assistance and given practical help in road construction and improvements within national parks and reserves, sometimes in conjunction with the Local Authority of the district concerned. The roads concerned are referred to in Appendix A of this report.

A programme of road works in the vicinity of £90,000 is envisaged for 1966-67.

#### FIRE CONTROL, ACCESS ROADS AND FIRELINES

The Forest Department continues to render valuable assistance in the preparation of fire control plans and construction of access tracks and firelines associated with fire control. Planning of fireline systems in the Kalamunda and Stirling Range National Parks was completed during the year by that Department, which also completed fireline construction in the Serpentine Falls Reserve and nearly completed a major works programme on access roads and vehicle tracks in the Nornalup National Park on our behalf as referred to in Appendix A of this report. This work involved construction of new roads and tracks and upgrading of others. The Main Roads Department made a contribution of \$3,000 as a number of these access roads are being developed for tourist purposes.



Firelines have been constructed most of the way around the Stirling Range National Park and arrangements have been made to complete the balance in the near future. The Local Bush Fire Brigades and Shire Councils have co-operated in the construction of these firelines, which are a prelude to an internal system of firelines.

Our own staff continue to look after fire control matters in the John Forrest National Park, Neerabup National Park and Yanchep Park.

Mobile firefighting units were supplied for use in the Nornalup National Park and Stirling Range National Park and also another such unit was supplied to Yanchep Park.

Two-way radios were installed in vehicles at the Stirlings and Yanchep Park for fire control purposes.

## WILDLIFE CONSERVATION AND PROTECTION OF FAUNA

### *Wildflower Conservation and Cultivation*

Wildflower plots have been centrally established at Yanchep Park and John Forrest National Park so that our unique flora may be viewed by tourists and other visitors to the parks, without the necessity to walk long distances. A start has been made on planting of selected areas with native flora along the scenic drives in these two parks.

The Board is conscious of the need for limiting the volume of wildflowers being picked for display purposes. With this in mind it is setting aside areas in which to cultivate wildflowers for picking purposes, in an effort to avoid interference with wildflowers growing naturally in the parks.

### *Tree Planting*

A further 300 Tuarts (*Eucalyptus gomphocephala*) and over 400 *E. globulus* and *E. viminalis* were planted out during the year. The Tuarts are common to the Yanchep area and the other trees will serve as an additional source of supply of gum tips for koala feed.

### *Biological Survey of National Parks*

A botanical survey is in course at Yanchep Park, in conformity with the Board's policy of having carried out progressively biological surveys of national parks and reserves of a similar nature. The plots pegged out in the major vegetation types at Yanchep are being kept under constant observation.

### *Koalas*

There have been some deaths in our little colony of koalas and cage soil culture tests are at present being undertaken, along with tests on

the possibility of one source of food—*Eucalyptus rudis*—being toxic at certain times of the year.

### *Native Fauna*

Native fauna is protected in national parks and reserves under the control of the Board, and shooting is prohibited.

There are exhibits of koalas, kangaroos, wallabies, emus, rosellas, parrots and finches at Yanchep Park, where black swans and ducks frequent Loch McNess and the ornamental lakes.

## SPRINGTIME WILDFLOWER WALKS

The conducted walks have been held once again in the springtime at Yanchep Park and John Forrest National Park for those desirous of participating, and wildflower beds have been name-plated for the benefit of botanists, tourists and other visitors.

## SIGNPOSTING OF NATIONAL PARKS AND RESERVES

Further signposting of national parks and reserves has been carried out, particularly in newly acquired areas. These signs usually carry the name of the park concerned along with reference to the protection of flora and fauna and to the prohibitions of firearms and lighting of fires, except in fireplaces provided by the Board.

## NOXIOUS WEEDS

Large-scale spraying against *Watsonia* was carried out in the John Forrest National Park by private contract and some spraying of Blackberry was carried out by the Department of Agriculture in the Serpentine Falls Reserve.

Equipment is on order for early spraying of noxious weeds generally within the national parks and reserves and a concentrated effort will be made to spray Cape Tulip in Yanchep Park and Walyunga National Park, *Watsonia* in John Forrest, Greenmount and Lesmurdie National Parks and also in the Serpentine Falls Reserve, where spraying of Blackberry will be followed up if necessary. Also the presence of Blackberry will be investigated in one or two other parks.

## MAJOR IMPROVEMENTS

In addition to the access road and fireline works programme reported elsewhere, other improvements effected in the Nornalup National Park included:—Public change rooms built at Coalmine Beach; conversion of hot water system in the Amenities Block at Coalmine

Beach Caravan Park to coin-in-the-slot metered kleanheat gas for showering and laundry use ; and provision of an Assistant Ranger's cottage at Coalmine Beach.

A water supply was established in the Moing-up Spring area of the Stirling Range National Park for toilet and ablution purposes only and a tank was provided nearby for catchment of drinking water from the roof of the Assistant Ranger's residence to be erected shortly.

The Glen Brook Dam at John Forrest National Park was connected to the Jane Brook swimming pool and water points provided for a fire hydrant and reticulation of gardens.

Two brick staff houses were under construction at Yanchep Park in order to meet staff accommodation problems.

A new water supply was established at the Yanchep Beach reserve.

#### NEW VEHICLES, PLANT AND EQUIPMENT

A 3-ton tip truck was purchased for John Forrest National Park and a 4-wheel drive Landrover truck was on order for fire control work, etc., in this and nearby parks at Greenmount, Kalamunda, Lesmurdie and Walyunga.

The Nornalup National Park was supplied with a 4-wheel drive Landrover for similar reasons, and a 4-wheel drive Landrover truck was on order for the Stirling Range National Park.

No. 1 Mobile Ranger (N. Walmsley) and No. 2 Mobile Ranger (J. H. Rose) were supplied with Landrovers and a caravan was supplied to the latter. Mr. Walmsley has his own caravan.

A front-end loader and manure spreader were purchased for use on the tractor at Yanchep Park. Also a drilling machine, a Vespa motor scooter and rotary mower were acquired for that park.

It became necessary to replace a worn out rotary mower at Crawley and tubular bike racks were supplied to replace the worn out timber racks.

#### RANGERS

A mobile ranger was appointed in the previous year and a second one was appointed this year. They are used for general ranger work in national parks and reserves not already staffed and have provided a means of relieving other single-ranger establishments.

#### STANDARD PICNIC FIREPLACES AND TABLES

Some more of these standard concrete picnic fireplaces were acquired and distributed among

the major parks and reserves. The Tourist Development Authority helped finance their acquisition.

Materials have been purchased and tubular framed picnic tables are being manufactured at Yanchep Park for distribution to other parks and reserves.

#### FIRST AID CLASSES

Several members of the Yanchep Park Staff attended first aid classes by arrangement and qualified in first aid.

#### ALGAE REMOVAL

As in past years this Board has co-operated with the Swan River Conservation Board in the employment of workmen and storage of plant and equipment at Crawley, for use in algae clearance generally along the Swan River and particularly in Matilda Bay fronting the Crawley Reserve. The cost is recouped.

#### PUBLICITY

The Press, radio and television stations continue to publicise items of interest associated with our national parks and reserves. It is felt that further publicity is needed in order to bring before the public an awareness of the facilities available in these national parks and reserves for their enjoyment and also an awareness of the need for conservation of flora and fauna. The Board hopes to extend this field of publicity and public relations progressively in the future and looks forward to the co-operation of the Press, radio and television bodies in this drive. Their past efforts are appreciated.

It is hoped to issue, gradually, attractive informative folders and leaflets on the more important parks and reserves.

#### HISTORICAL PLAQUES

Two grants were made during the year to Royal Western Australian Historical Society Branches, viz. :—

- (a) \$40.00 to the Eastern Goldfields Branch, as part cost of providing a plaque at the White Hope Mine about 29 miles south of Kalgoorlie, in memory of C. C. Hunt ;
- (b) \$35.70 to the Albany Branch, as part cost of a bronze plaque erected at Albany to commemorate the memory of a pioneer of the original Military Detachment which arrived at King George's Sound in H.M.S. Amity.

Grants of this type are limited to a maximum of \$40 or the cost of the plaque, whichever is the lower.

#### FUTURE CONTROL OF GARDEN AND MOWING SERVICES

The Board has voluntarily relinquished control of the Garden and Mowing Services Sections, which will be taken over by the Public Works Department from the 1st July, 1966. Control of these sections was acquired years ago, when the Board was officially known as the State Gardens Board. Members feel that the operation of these services is foreign to its major function of administering national parks.

#### BOARD INSPECTIONS

Board members and the Managing Secretary have made periodical inspections of national parks and reserves under the Board's control, sometimes as a Board and sometimes as individuals, depending upon circumstances. Those areas visited include Kalamunda, Nornalup Porongorups, Stirlings, Greenmount and John Forrest National Parks; Yanchep Park; and Hamelin Bay, Serpentine, Crawley, Penguin Island and Keane's Point Reserves. Also the South-West Caves country, Pemberton National Parks and Lakes Clifton-Preston Reserves were inspected in conjunction with one of these trips.

Plans are in progress to visit the Kalbarri National Park in August, Nambung National Park in October and Cape Le Grand National Park in November next.

#### APPENDICES

More detailed information on the activities in the individual parks and reserves is given in Appendix A to this report.

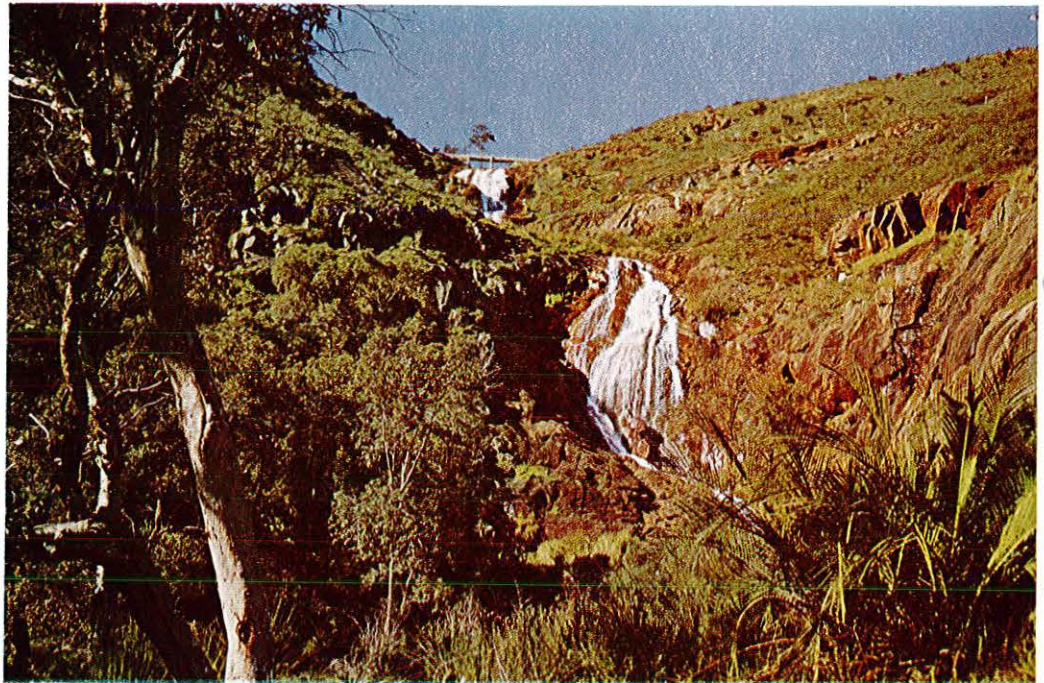
Also further information is given in Appendix B in regard to the activities of the Garden and Mowing Services Section.

#### GENERAL

The financial assistance received from the Treasury is appreciated, along with the advice and practical help received from the following Government Departments:— Agriculture, Child Welfare, Forests, Government Stores, Harbour and Lights, Lands and Surveys, Main Roads, Public Works and Town Planning, and also the Bush Fires Board of W.A., Government Printing Office, Metropolitan Water Board, Swan River Conservation Board, Tender Board and the Tourist Development Authority.

Members join me in expressing appreciation to the Officers of the departments and organisations concerned.

The Board also appreciates the assistance rendered by Shire Councils and Bush Fire Brigades, including the Shires of Augusta-Margaret River, Cranbrook, Esperance, Exmouth, Kalamunda, Manjimup, Mundaring, Northampton, Plantagenet, Serpentine-Jarra-



dale and Wanneroo ; and the Borden, Kojaneerup, Porongorups, and Walpole Bush Fire Brigades, etc.

Also the Nornalup National Park Advisory Committee's efforts have been appreciated in matters associated with the park concerned. Reference is made to the valuable service rendered by the previous chairman, Mr. T. E. Swarbrick, who resigned during the year on leaving the district.

Members join me in expressing appreciation for the loyal and dedicated service of its Head Office and Field Staffs, and also the efforts of its Consultant Architect and Honorary Building Supervisor.

R. J. BOND,  
*President,*

*National Parks Board of Western Australia.*

#### APPENDIX A.

##### NATIONAL PARKS AND RESERVES

These are listed in order of size, with National Parks first.

##### KALBARRI NATIONAL PARK

###### *Control*

This is the largest of the national parks under the Board's control and was vested in late 1963 and a Board inspection has been fixed for August, 1966.

###### *Extra Territory*

An application has been made in connection with adding to this park further territory of scenic value.

###### *Ranger*

Negotiations are in progress with the local Shire regarding the appointment of an honorary ranger, but in the meantime one of our mobile rangers is being sent to this park for a few months, in connection with duties associated with protection of fauna and flora, fire control, unauthorised shooting, disposal of accumulated rubbish and litter, etc.

###### *Signs*

Some signs relating to such matters as protection of flora and fauna and prohibition of fire-arms and lighting of fires are being erected by this ranger and other signs are on order.

##### STIRLING RANGE NATIONAL PARK

###### *Control*

Ranger F. A. Spratt is in immediate charge of this large national park and for the time being

he operates from a caravan located at the junction of the Bluff Knoll access road and the Chester Pass Road near the northern end of the park.

Mobile Ranger Mr. N. Walmsley rendered valuable assistance during parts of the year in effecting improvements in this park.

###### *Access Roads*

Some further work was carried out on the connecting road between Chester and Redgum Passes, but sealing of the access road to the Bluff Knoll parking area was not carried out as expected. There are indications that further work will be carried out on the former road next year and that at least the final steep section of the latter road will be sealed.

###### *Walking Paths*

Improvements were effected to the walking path to the peak of Toolbrunup and steps were constructed down the slope of a deep creek bed which crosses the walking path to Bluff Knoll (3,640 ft.), the highest peak in the Stirling Range.

###### *Fire Control*

The Forests Department has submitted a fire control plan for this park and, pending its final adoption, action has been concentrated on having the perimeter of the park provided with firebreaks. This work has been carried out in co-operation with the local Shires and Bush Fires Brigades and their efforts are appreciated. This applies particularly to the Shires of Plantagenet and Cranbrook and the Borden, Kojaneerup and Woogenellup Bush Fires Brigades.

Firebreaks have been provided nearly all the way around the park, with the exception of the northern boundary east of Chester Pass road and the upper end of the eastern boundary, where, although construction work was authorised, the clearing had not been carried out.

A mobile firefighting unit and water tank have been provided and this, coupled with the fire-break system and the installation of a two-way radio in the ranger's landrover, is providing further protection against fire damage to the flora and fauna in this important national park.

###### *Assistant Ranger*

Arrangements are in hand to appoint an assistant ranger and build him a residence in the Moingup Spring area, centrally situated adjacent to Chester Pass Road.

###### *Public Toilets*

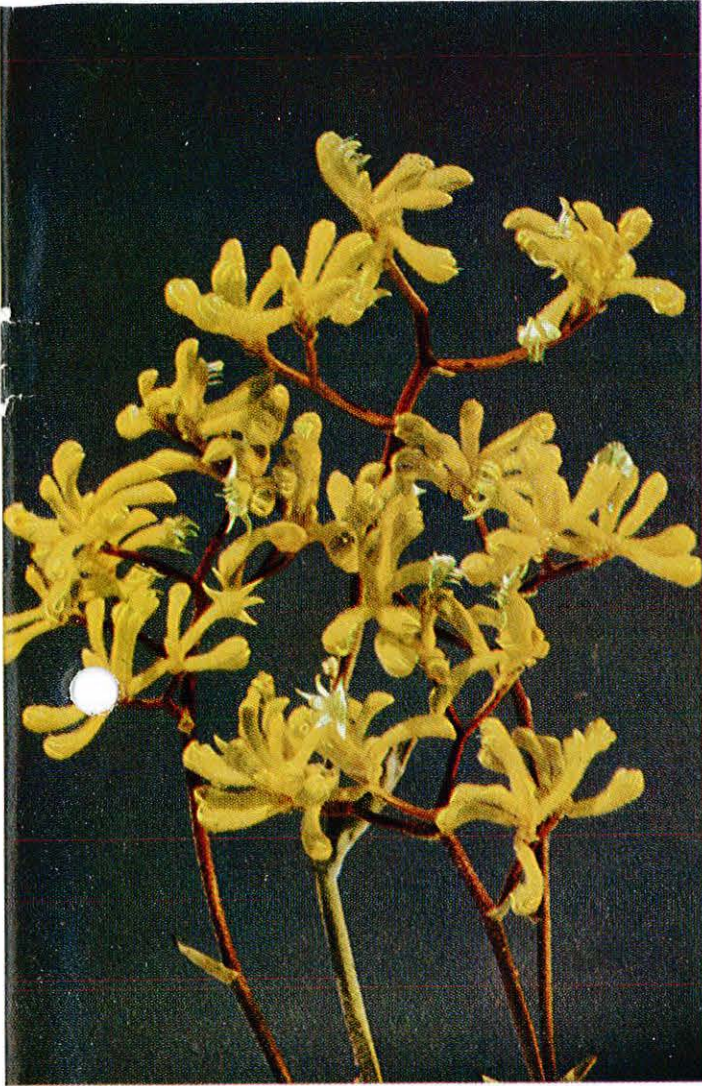
A block of toilets will be built in the Moingup Spring area in the next few months.



*Western Australian Christmas Tree (Nuytsia floribunda)*



*Page 12* : *Red Leschenaultia (Leschenaultia formosa)*



*Yellow Kangaroo Paw (Anigosanthus pulcherrima)*



*Scarlet Feather Flower (Verticordia grandis)*



*Mobile Ranger (Mr N. Walmsley) with Landrover and Caravan*

#### *Water Supplies*

Potable water is a problem in the Stirlings, so in the Moingup Spring area water is being supplied to a 20,000-gallon concrete tank from three shallow wells and this water will be used for ablution and toilet purposes only. Another tank has been provided for rainwater catchment from the assistant ranger's residence when erected shortly. The question of a water supply in the Bluff Knoll turn-off area is being investigated with a view to establishing a caravan park and camping area in this vicinity and also erecting a ranger's residence there.

#### *Caravan Park and Camping Area*

The establishment of permanent facilities for caravans and camping has been delayed pending the location of an adequate supply of potable water as referred to earlier. In the meantime temporary toilets have been erected at the Bluff Knoll turn-off for the benefit of those wishing to stay overnight in the nearby temporary caravan and camping area.

#### *Bluff Knoll Car Park and Picnic Area*

Some native trees and shrubs have been planted around the perimeter of this elevated area.

#### *Signs*

Further signposting has been carried out, including some along the walking paths to Bluff Knoll and Toolbrunup peaks.

#### CAPE LE GRAND NATIONAL PARK

##### *Control and Signs*

This national park was not vested in the Board until early 1966 and the Shire of Esperance has agreed to erect appropriate signs already supplied by the Board, pending a mobile ranger being released from other important duties for stationing in this area temporarily—probably in the springtime.

#### CAPE RANGE NATIONAL PARK

##### *Control*

Not vested in the Board until late 1965 and on the recommendation of the Commissioner for the Shire of Exmouth, Messrs. D. Bathgate and V. Buchanan have recently been appointed honorary rangers.

##### *Signs*

The Shire is co-operating in the signposting of the park.

#### NORNALUP NATIONAL PARK

##### *Control*

Ranger L. G. Gunson is in charge of this very attractive and heavily timbered national park. He is located at Coalmine Beach, via Walpole, and he is to be commended on his past efforts in conjunction with Honorary Ranger Mr. J. Rate, who is also a member and secretary to the Nornalup National Park Advisory Committee.



*Staff House at Yanchep Park*

#### *Assistant Ranger*

It became necessary to appoint an assistant ranger to help Ranger Gunson and Mr. A. J. Passfield has ably filled this position since the 6th April, 1966. A house has been provided for him at Coalmine Beach near the caravan park and camping area.

#### *Nornalup National Park Advisory Committee*

Mr. T. E. Swarbrick resigned from the position of Chairman and member of this committee during the year, when he left the district. Mr. J. D. Hull was elected chairman in his place and Mr. P. Harbin was appointed a member of the Committee.

The Committee now comprises :—

Messrs. J. D. Hull (Chairman), C. Cooper, P. Harbin, R. S. Palmer and J. H. Rate. The Committee's secretarial duties are carried out by Mr. Rate, who is also an Honorary Ranger for the park. The Board appreciates the value of this Committee in conveying to the Board the local viewpoint and recommendations on problems arising from time to time in connection with this national park.

#### *By-Laws*

The Board's by-laws are exhibited at Coalmine Beach.

#### *Access Road to Coalmine Beach and around The Knoll*

Further sealing work has been carried out on this road, which is now sealed all the way from the turn-off at the South Coast Highway to the Amenities Block at Coalmine Beach. It is anticipated that a further section will be sealed during 1966-67.

#### *Access Roads and Track (including firelines) Construction Generally*

A major plan of construction work on access roads and tracks was undertaken this year in the section of the park north of the South Coast Highway, on the recommendation of the Forest Department as a more economical approach than doing a little each year.

The work cost \$10,581, of which the Main Roads Department kindly provided \$3,000. However, due to the hilly nature of the ground rendering side cutting and provision of culverts necessary, and the heavy timber growth (Karri, Marri, Tingle and Karri Wattle, etc.) encountered the plan envisaged could not be fully completed. Consequently, provision has been made in next year's budget for the expenditure of up to a further \$6,000 to complete the planned system.

Some of these access roads will have value for both tourist and fire control purposes, whilst others will serve for fire control purposes only.

#### *Maintenance of Tracks and Firelines*

A tractor and grader attachment have been supplied for grading and maintenance of these



tracks and firelines. Regular attention to them is necessary, due to the rapid growth of the Karri Wattle and other plants alongside the tracks and firelines.

#### *Firefighting Equipment*

The ranger has been supplied with a mobile firefighting unit and water tank for fire control purposes.

#### *Controlled Burning*

The Walpole Bush Fire Brigade has carried out further controlled burning in the vicinity of Isle Road, west of the Tinglewood Guest House access road, north of Cemetery Road and also in the vicinity of Jones Road and Hilltop Road, etc., for which the Board recouped the cost. Also our ranger carried out small sections of patch burning, principally around The Knoll and Coalmine Beach areas.

#### **Improvements in Coalmine Beach Area: *Water Supply***

A supplementary water supply has been established at Collier Brook, where a pump and diesel engine have been installed under cover and water is pumped to overhead tanks during the summer months for supply of water to the amenities block and camping and caravan area, which was reticulated during the year. It is still necessary to use bore water in the winter, when the brook water becomes discoloured through peat stain.

#### **No. 1 Amenities Block**

The hot-water system has been converted from wood fuel to coin-in-the-slot metered Kleenheat gas, and the convenience of this change should be appreciated by users of the ablution and laundry facilities.

#### **Public Change Rooms at Coalmine Beach**

Brick change rooms were built on the foreshore at Coalmine Beach during the year for the convenience of day visitors.

#### **Swimming Area at Coalmine Beach**

This swimming area has been defined and a diving pontoon provided offshore.

#### **Assistant Ranger's Residence**

A secondhand house was transported from Shannon and renovated on site at Coalmine Beach for occupation by a newly appointed assistant ranger.

#### **Extension of Garage**

The garage at the Ranger's residence was extended to house additional vehicles and equipment.

#### **Scenic Lookout on South Coast Highway**

A scenic lookout has been constructed on the southern side of this highway about a half mile east of the Tinglewood Guest House turnoff, along with a small car park and picnic area. Also appropriate signs have been erected.

#### *Dredging of Frankland and Deep Rivers*

The Public Works Department co-operated in meeting a Board request for dredging of sections of the Frankland River and the mouth of the Deep River in order to remove silt and thus facilitate their use by watercraft.

#### *Signs*

Watercraft speed limit signs have been erected at selected sites in connection with a speed limit of 8 knots fixed in the Walpole Inlet and Channel connecting it with the Nornalup Inlet.

Also other signposting has been carried out in relation to protection of flora and fauna, lighting of fires, restriction on firearms (which are prohibited in national parks) and fingerpost signs to scenic points.

#### *Unauthorised Structures*

Some unauthorised camping structures were removed from the Depot, Peppermints and Pt. Nuyts areas after press warnings had been given, following inability to locate the owners of the structures concerned.

#### *Vehicles, Plant and Equipment*

Due to the terrain of this park and the comparative isolation of the ranger, the following vehicles, plant and equipment have been made available to him this year:— A 4-wheel drive Landrover for mobility, particularly for fire control purposes; a Ferguson Tractor and attachments for grading firelines and tracks; a concrete mixer; oxy welding plant; a chain saw and a rotary mower.

#### **PORONGORUPS NATIONAL PARK**

##### *Control*

Ranger F. A. Spratt visits this park periodically in conjunction with his duties in the Stirling Range National Park, and he carries out essential work there. Ranger N. Walmsley has assisted materially in signposting the walking tracks and scenic points.

##### *Additional Territory*

The purchase price has been paid over and action is in course towards having added to this park Plantagenet Location 5878 of about 319 acres on the west side of the park. It is attractive wildflower country.

### *Access Roads*

Repairs were carried out on the road to The Pass and drainage improvements effected to the road in the northern section of the park between Woodlands Road and Bolganup Dam. The Shire of Plantagenet carried out the work on our behalf.

### *Walking Path to Nancy's Peak*

Here again the Shire of Plantagenet co-operated in the selection and construction of a new walking path over the major part of the route in an effort to ease the steep and sometimes slippery grade, and thus facilitate winter climbing. Mobile Ranger Walmsley erected temporary indication signs for the path, pending preparation of permanent ones.

### *Bush Fire*

In March, 1966, this park was practically burnt out by a major bush fire, which escaped from an authorised burn on adjacent alienated land and entered the park at one of the few points where there was not an adequate fire-break between the park and adjoining land. Reports indicate that much wider firelines could not have held this fire under the conditions prevailing on the day in question.

This park has a fireline system, which could not hold the fire under the hot, hazardous conditions in this heavily timbered park, with its steep hilly slopes. Due to the rugged type of the country one continuous fireline cannot be constructed around the perimeter of the park.

### *Picnic Tables and Rubbish Bins*

One each of these was provided near the Castle Rock parking area and another picnic table was sited near the main parking area just past Bolganup Dam and it is proposed supplying a few more in latter area shortly. The Public Works Water Supply Section supplies and services rubbish bins in the latter area in an effort towards avoiding water pollution to Bolganup Dam and to minimise the litter problem.

## WALYUNGA NATIONAL PARK

### *Control*

This newly acquired area is being purchased by the Board, but is not yet officially vested in it. Mobile Ranger J. H. Rose has been carrying out general duties in the park, with particular emphasis on prohibition of shooting and the removal of river-washed stone. The park is located south-east of Bullsbrook and is approached via the Great Northern Highway, the turn-off being 22½ miles from Perth.

### *Access Road*

The existing access road is fairly rough and plans are in progress for it to be re-constructed.

### *Toilets*

Temporary toilets have been provided, pending the erection of permanent ones during the following year.

### *Water Supply*

A water bore has been sunk and plans are in hand to establish a permanent water supply for drinking and toilet purposes at this popular picnic spot.

### *Signs*

The park has been judiciously signposted with special emphasis on protection of flora and fauna, no shooting and no removal of soil and stones.

## JOHN FORREST NATIONAL PARK

### *Control*

Superintendent G. R. Edwards is in charge of this park and has under his control a small staff of workmen. He resides in a property adjoining the eastern side of the park.

### *Additional Territory*

Negotiations are in progress towards having additional territory added to the park in the region of the north-west corner.

### *Road Access and Car Parks*

Plans are in progress for improvement of access to the existing main parking areas near the tearooms and for the provision of further vehicle parking space to meet the growing demand in this direction.

### *Fire Control*

Board workmen attended to the usual fireline maintenance and controlled burning during the year.

### *Glen Brook Dam*

A protective fence was erected along the eastern bank of this dam, as this bank is very steep.

### *Pipeline from Glen Brook Dam to Swimming Pool*

A 4 in. asbestos pipeline has been laid between the new Glen Brook Dam and the upstream end of the swimming pool in Jane Brook, in order to provide fresh water to this pool over the summer months. A fire hydrant take-off has been provided, along with water points for watering garden beds.

#### *Shade House, Potting Shed and Nursery Fence*

These structures were completed during the year and provide facilities for producing wildflower plants for planting out in the park for general beautification and also for supplying wildflowers for exhibition purposes.

#### *Wildflower Gardens and Springtime Wildflower Walks*

Further planting has been carried out and additional garden plots built. Also a start has been made on beautifying the main scenic drive with planting of Bottle Brush, Wattles and wildflowers at selected points.

Additional wildflower name-plates have been provided and springtime conducted walks were continued in season.

#### *Lookout Below National Park Falls*

A scenic lookout has been provided below these falls.

#### *Picnic Shelter Sheds*

Six small picnic shelter sheds have been erected to a new design and a number of other rustic ones have been renovated.

#### *Garage*

The garage accommodation was extended and toilet and shower facilities are in the course of being provided nearby for the workmen.

#### *Vehicles, Plant and Equipment*

A concrete-mixer and an oxy-welding plant were purchased and an order placed for a new 4-wheel drive truck for general and fire control use over rough terrain. This truck will also be used in connection with work at other nearby national parks controlled from this park.

#### *Watsonia*

Spraying for *Watsonia* was carried out with success along Jane Brook from the vicinity of the gauging weir house to Rocky Pool and further spraying will be carried out during the coming year.

### NEERABUP NATIONAL PARK

#### *Control and General*

Superintendent W. J. Burnett is in charge of this newly acquired park, in conjunction with his other duties as Superintendent of Yanchep Park. So far development has been restricted to the provision of firelines and signposting.

### KALAMUNDA NATIONAL PARK

#### *Control and General*

Superintendent G. R. Edwards of John Forrest National Park is in charge of this park also and so far signposting only has been carried out with emphasis on protection of flora and fauna, no firearms and no fires.

The Forests Department has prepared a fire-line plan for this park, which it is hoped to implement during 1966-67.

### GREENMOUNT NATIONAL PARK

#### *Control and General*

This small national park is also under the supervision of Superintendent Edwards of John Forrest National Park and apart from signposting and the provision of a good sealed access road, this park is being left in its natural state. Fire control and spraying for *Watsonia* will receive attention during the coming year.

### LESMURDIE FALLS NATIONAL PARK

#### *Control*

This is another small national park under the supervision of Superintendent Edwards of John Forrest National Park.

#### *Improvements*

A concrete footbridge has been constructed immediately above the Lesmurdie Falls and work is in progress on the provision of another footbridge further upstream and a walking path to the foot of the falls.

#### *Watsonia*

This is also prevalent along the banks of the Lesmurdie stream and arrangements are in hand to spray it shortly.

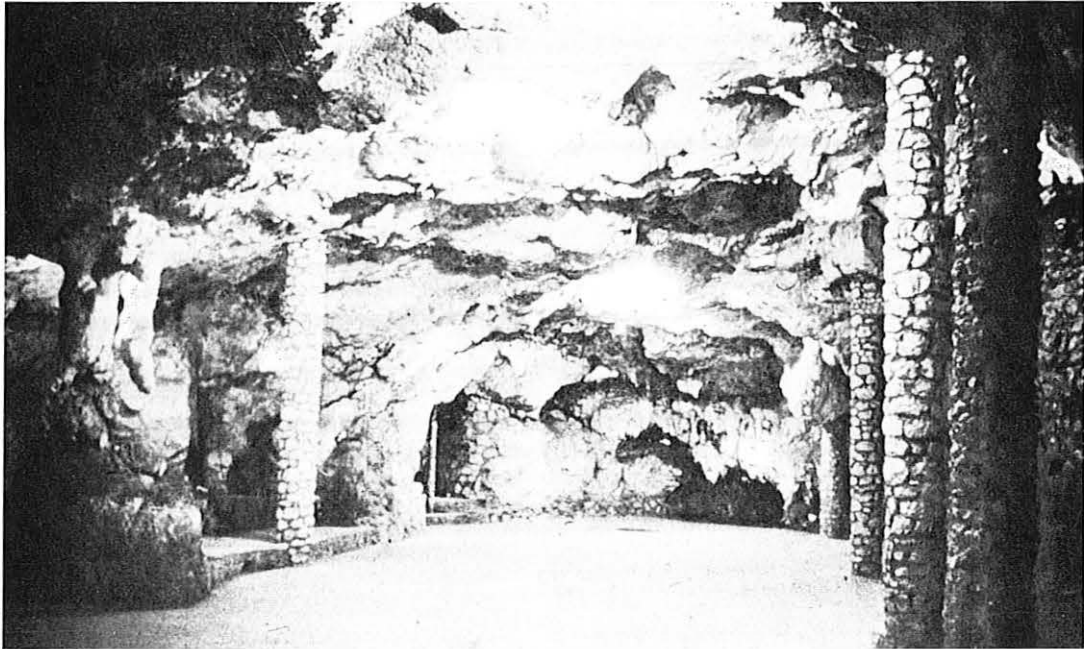
### YANCHEP PARK AND CAVES

#### *Control*

Superintendent W. J. Burnett is in charge of Yanchep Park, Yanchep Beach Reserve and nearby flora reserves (for koala feed purposes). He resides in the park and has a staff of 18 persons, including office staff, cave guides, gardeners and maintenance workers, etc.

#### *Additional Territory*

Swan Location 7953 was added to this park during the year. The Board is anxious to have a small area comprising Crown Grant 422 included in the park, as it is entirely surrounded by this reserve. Financial means of acquiring this small area are being investigated.



*The Silver Stocking, Cabaret Cave Yanchep Park*

#### *Roads and Car Parks*

Replanning of the southern entrance road is in progress, along with plans for additional vehicle parking space to meet increasing public demand.

#### *Golf Course*

This attractive golf course, with its grassed fairways and greens, is a public course and patronage continues to increase. Further improvements have been effected, including additional reticulation.

#### *Playing Fields*

A third playing field is not yet fully grassed, as further filling had to be provided. However, it is progressing satisfactorily.

#### *Caves*

Further rewiring of caves was carried out following their connection to the S.E.C. electricity supply.

#### *Yanchep Inn*

New internal toilets were provided on the ground floor and work was in progress on renovations to external toilets adjacent to the beer garden. Also the ceilings in the bars were renewed and the garages renovated.

#### *Staff Houses*

Two additional brick houses were under construction and major renovations were carried out to an existing staff house recently vacated.

Plans are in progress to build a new residence for the Superintendent. Also garages are being built alongside those staff houses at present without them.

#### *Boat Repair Shed*

This new building was nearing completion at the close of the year.

#### *Launches and Rowing Boats*

A new 20-ft. launch was built by the Harbour and Lights Department from materials supplied by the Board. This launch is necessary on busy days and when the larger one is laid up for painting and other maintenance. A new engine was installed in the launch "Miss Yanchep" and her engine transferred to the new launch.

A further 6 rowing boats were constructed for the Park at Riverbank during the year.

#### *Vehicles, Plant and Equipment*

A Vespa motor scooter was acquired for traffic and golf course patrol work, etc. Also a front-end loader and a manure spreader were purchased for use on the tractor. Other items acquired included a power-operated drilling machine and a rotary mower.

#### *Fire Control*

The usual fireline maintenance and controlled burning were carried out by Board workmen.

Another improved firefighting unit was acquired and two-way radio equipment installed in two vehicles and at the Yanchep Park Office for fire control purposes.

#### *Picnic Shelter Sheds*

Two large and four small picnic shelter sheds have been erected, but floors have yet to be concreted.

#### *Tubular Picnic Tables*

The frames for a new type of picnic table are being made up at Yanchep Park for distribution to parks and reserves where required. These are to an American design and should prove economical in subsequent maintenance.

#### *Tree Planting*

A further 300 Tuarts (*Eucalyptus gomphocephala*) were planted in a part of the park east of the Perth-Lancelin road. Over 400 *E. globulus* and *E. viminalis* were planted in an area south of the Yanchep Beach road. These latter trees will provide a further source of koala feed.

#### *Wildflower Gardens and Wildflower Walks*

Additional planting has been carried out in wildflower beds, more beds provided and some beds bordered with limestone or granite.

More wildflower name-plates have been provided and springtime wildflowers conducted walks were continued in season.

#### *General*

Facilities at Yanchep Park include an inn, guest houses, picnic areas, golf course, tennis courts, playing fields, launch rides and boating on Loch McNess. There are also picturesque walks, kangaroos and birds on display and the wildflower beds are a feature in the springtime particularly.

### YANCHEP BEACH RESERVE

#### *Control*

Exercised by Superintendent Burnett in conjunction with Yanchep Park. However, there is a move afoot to give up the vesting order in favour of the local Shire, as the purpose of the reserve is "camping" and this is foreign to the normal functions of the Board.

#### *Water Supply*

A new water supply was established and entailed the supply of a new bore, pump, motor,

pump house, piping and 20,000-gallon concrete tank.

### SERPENTINE FALLS PARKLANDS

#### *Control*

Part-time Ranger W. G. Baldwin collects vehicle entry fees, attends to rubbish removals and looks after the change rooms and toilets.

#### *Picnic Area, Change Rooms and Toilets*

Mobile Ranger Walmsley spent some time during the year cleaning up the main picnic area and painting the change rooms and toilets.

#### *Spraying for Blackberry and Watsonia*

Spraying for Blackberries was carried out by the Department of Agriculture and spraying of Watsonia will be carried out next year at the appropriate time.

#### *Fire Control*

A fireline plan prepared by the Forests Department for this park has now been completed. That department arranged the fireline construction work over very rugged country and the efforts of the officers concerned are appreciated.

#### *Bridge Downstream from Serpentine Falls*

An effort is being made to have a bridge constructed downstream from the Serpentine Falls in order to give access to an additional picnic ground on the north side of the river.

### HAMELIN BAY RESERVE

#### *Control, etc.*

Mr. A. S. Wood, who, with his wife, leases a portion of this reserve for holiday resort purposes, also acts as an honorary ranger.

#### *Amenities*

Public change rooms and toilets are maintained by the lessees for a small consideration.

#### *Car Park*

This was enlarged and it is anticipated having it sealed shortly.

### NORNALUP FLORA RESERVE

Administered in conjunction with the Nornalup National Park.

### BORONIA RESERVE AT EMU POINT NEAR ALBANY

This reserve is being maintained in its natural state.

## CRAWLEY RESERVE

### *Control*

Caretaker/Ranger P. W. Daley lives in a residence within this Swan River beach reserve and looks after the maintenance of the reserve, along with help from two other employees. Casual labour is engaged in summer.

### *Crawley Tearooms*

The old tearooms have been vacated and demolished. Negotiations are in progress towards establishing modern tearoom and kiosk facilities for the public.

### *General*

Three tubular steel bike racks were provided near the main swimming area and a section of the workshop fence was rebuilt following dismantling of the adjoining structures. Also the change rooms and toilets near the main swimming area were rewired for electricity.

A rotary mower and a power saw were supplied too.

Sites are leased to the Royal Perth Yacht Club, Mounts Bay Sailing Club, Perth 14 ft. Dinghy Sailing Club, 1st Pelican Point (Sea Scouts) Group and the Governors of Hale School. Also the University of W.A. has the use of a boat shed site on the foreshore.

## ARALUEN-CANNING DAM AREA

This is a comparatively small, long and narrow strip of territory lying between the Canning River and McNess Drive and extending from the vicinity of Araluen to the boundary of the Canning Dam water reserve. It is undeveloped.

## PENGUIN ISLAND

### *Control*

Mr. R. G. Carlberg, who, with his wife, leases a portion of this island for holiday resort purposes, also acts as Honorary Ranger. His principal duties involve protecting the penguins and prohibiting dogs on the island.

### *Penguins*

One large and four small penguin shelters were erected for nesting purposes and the island is signposted regarding protection of these quaint creatures.

### *Public Toilets*

These were completely renovated during the year.

### *Signs*

The Board co-operated with the local Shire in arranging the erection of signs indicating the danger of crossing via the sandbank to the mainland, especially at high tide or late evening, following a near-drowning tragedy.

## WALPOLE GOLF COURSE RESERVE

Excised from Nornalup National Park and at present held in its natural state.

## WALPOLE YACHT CLUB RESERVE

Also excised from the Nornalup National Park and leased to the Walpole Yacht Club.

## EAST PERTH (DISUSED) CEMETERY

A full-time gardener is employed on maintenance of the grounds of this cemetery, which contains the remains of many of the early pioneers of this State.

Vandals cause damage from time to time and the co-operation of the Police has been sought in an effort to avoid or minimise such damage.

## KEANE'S POINT RESERVE

A small area leased to the Royal Freshwater Bay Yacht Club. The grounds are well maintained by this progressive club, which is providing excellent facilities for boating enthusiasts to enjoy fully the pleasures of aquatic sport on the Swan River.

## SMALL PORTION OF RESERVE A1720 (KING'S PARK)

This small area, adjoining Mounts Bay Road, is held by the Board and Mr. B. S. Hardwick holds a tenancy over the land, on which he operates a kiosk known as "Bernies."

## OLD MILL RESERVE, SOUTH PERTH

A small reserve at the South Perth end of the Narrows Bridge and it is leased to Messrs. H. L. Brisbane and Wunderlich, who have restored the Old Mill and Cottage and have established a small historical museum.

## THE KNOLL, GOOSEBERRY HILL

It was thought that vesting of this area in the Board would have been finalised before this. Consequently, the Board arranged for the construction of a car park area at the foot of The Knoll, and a walking path to the summit. These were completed during the year. Earlier the Main Roads Department constructed a sealed road down the old zigzag railway track.

## APPENDIX B.

### GARDEN AND MOWING SERVICES

#### GARDENING SECTION

##### *Control*

Supervisor of Gardens, Mr. A. G. Eaton, supervises this section.

##### *Establishments Maintained*

A gardening service was being provided at 35 Government establishments at the 30th June, 1966, as against 32 a year earlier.

##### *Other Supervision Work*

The Supervisor of Gardens also supervises the work of the gardening staffs at Government House and Parliament House, as distinct from his duties with the Board. He also acts in an advisory capacity for the Crawley Reserve, East Perth Cemetery, John Forrest National Park, Yanchep Park and the Zoological Gardens.

#### MOWING SERVICES SECTION

##### *Control*

Foreman E. S. Walters supervises the operations of this section, the Depot being based at Jarrah Road, Victoria Park. His staff comprises a leading hand and 20 other workers.

##### *Mowing*

##### *School Grounds and Playing Fields*

A mowing service was being provided at 204 schools on the 30th June, 1966, as against 170 at the close of the previous year.

##### *Other Government Establishments*

There were 47 of these establishments being supplied with a mowing service as at the close of the financial year, compared with 57 at the close of the preceding year, following a re-shuffle of responsibilities between garden and mowing service operations.

##### *Hard Standings*

These were sealed during the year, following gravelling in the previous year.

##### *Vehicles and Mowers*

Another 30 cwt. motor truck and one more Ferguson tractor (with cab) were purchased, along with another set of gang mowers, 1-24 in. Dennis Mower, 1-24 in. Deutcher 2-speed rotary mower, 1-20 in. Scott Bonnar Mower and 3 small rotary mowers.

Also a sparkplug tester was acquired.

#### FUTURE CONTROL OF THE GARDENING AND MOWING SERVICES

Arrangements have been made for the Public Works Department to take over control of these services from the 1st July, 1966.