

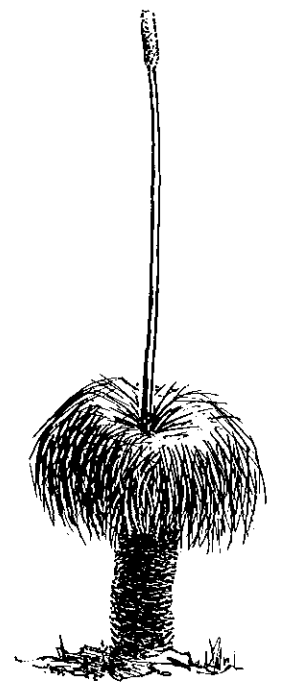
Annual Report 1968

National Parks Board
of Western Australia



Annual Report 1968

National Parks Board
of Western Australia



✓

Red-flowering Gum (Eucalyptus ficifolia)
(Photo by courtesy of the Western Australian
Development Authority)



National Parks Board of Western Australia

To the

Honourable W. S. BOVELL, M.L.A.

Minister for Lands, Forests and Immigration.

I have pleasure in presenting on behalf of the National Parks Board of Western Australia this annual report on its main activities over the past year ended the 30th June, 1968.

BOARD MEMBERSHIP

Membership remains unaltered and comprises:—

R. J. Bond, I.S.O., A.A.S.A., A.C.I.S., *President.*

C. F. H. Jenkins, M.A., *Deputy President.*

C. R. Bunning, B.C.E., A.M.I.E.

J. E. Lloyd, M.T.P.I., F.A.P.I.

J. F. Morgan, L.S., F.I.S. (Aust.), M.I.C.W.A.

R. D. Royce, B.Sc. (Agric.).

F. C. Smith, J.P.

There are two sub-committees, namely the Finance Committee and the Works Committee, each comprising the President, Deputy President and one other Board Member.

ADMINISTRATIVE OFFICERS

Managing Secretary—H. E. Bancroft, A.A.S.A.,
A.C.I.S.

Administrative Assistant—H. R. Gorringe.

RESERVES

New Vestings

Yalgorup National Park of 7,684 acres in the Clifton and Preston Lakes area south of Mandurah was vested in the Board during the year, as also were a National Park of 4,017 acres and a Reserve of 26,688 acres for "Preservation of Natural Formations (Pinnacles)" which are both in the Nambung area and which for practical purposes will be combined to form a composite park to be known as the Nambung National Park.

Small areas have been reserved for Ranger's residential purposes in the Kalbarri and Walpole townsites respectively.

With the approval of the Nomenclature Advisory Committee, the name of the Nornalup National Park was changed to the Walpole-Nornalup National Park during the year. The Serpentine National Park reserves have been amalgamated, and set apart as one "A" Class reserve.

Reserves Vested in the Board

National Parks and other reserves totalling 821,220 acres are vested in the Board and comprise the following:—

<i>National Parks</i>	<i>Acres</i>
Cape Le Grand....	39,500
Cape Range	33,171
Geikie Gorge	7,750
Greenmount	127
John Forrest	3,648
Kalamunda	919
Kalbarri	358,000
Lesmurdie Falls....	81
Nambung (including Pinnacles Area)	30,705
Neerabup	2,785
*Porongurup	5,531
Serpentine	1,571
Stirling Range	284,540
Walpole-Nornalup	32,229
†Walyunga	4,000
Yalgorup	7,684
	812,241

<i>Other Reserves</i>	<i>Acres</i>
Albany Boronia Reserve	112
Araluen-Canning Dam Reserve	50
East Perth Cemetery Reserve....	12
Hamelin Bay Reserve	366
Kalbarri Ranger's Residence Reserve	¼
Keane's Point Reserve....	6
Matilda Bay Reserve	51
Nornalup Park Lands Reserve	919
Nowergup Lake Fauna Sanctuary	288
Old Mill Reserve, South Perth	¼
Penguin Island Reserve	31
Walpole Flora Reserve	228
Walpole Golf Course Reserve....	35
Walpole Ranger's Residence Reserve	¼
Walpole Yacht Club Reserve	2
Yanchep Park and Caves Reserves	6,394
Yanchep Flora Reserves	439
‡Yanchep Beach Reserve	44
Small part of King's Park Reserve (Bernies)	1
	8,979
	821,220

* Plantagenet Location 5878 is still in the process of being added to the Porongurup National Park and minor adjustment to the northern boundary of this park is being negotiated.

† Walyunga National Park has not yet been officially created a reserve and vested in this Board, pending certain difficulties to be overcome first in connection with its purchase by the Board and involving survey of the Standard Gauge Railway route.

‡ A change in control of the Yanchep Beach Reserve was not finalised during the year as expected but there is every indication that this will be dealt with in the 1968 Reserves Bill.

Amendments to Existing Reserves

The Albany Boronia Reserve has been reduced in size by about three acres, upon transfer of this small area to Reserve No. 22698. Also the area of Yanchep Park was reduced by the excision of about 38 acres adjacent to the western boundary of Reserve A.9868 for "Forestry Headquarter's Site", in exchange for a larger area on the eastern side of the park, which has yet to be added to the reserve.

General Vesting of Reserves

All National Parks are not vested in this Board and many of these are of insufficient size to justify giving them a "national character".

It is hoped that eventually all important National Parks will be placed under the control of this Board. Such action would facilitate the adoption of a common policy with economy in administration and general control of the National Parks.

Control has been sought over a number of areas, of which the Yalgorup National Park (Lakes Clifton and Preston Area) and the Pinnacles Reserve adjacent to the Nambung National Park were finalised during the year under review and those not yet finalised are:—

- (1) "The Knoll" area at Gooseberry Hill.
- (2) Recherche Archipelago Reserve (No. 22796).
- (3) Cape Arid Reserve (No. 24047).
- (4) Twilight Cove Area.
- (5) Bremer Range Area.
- (6) Fitzgerald River Reserve (No. 24048).
- (7) Nambung National Park (not yet completely finalised).
- (8) Pt. Coulomb (Dampier Land) Area.
- (9) Drysdale River Area.
- (10) Barlee Range Area.
- (11) Flora Reserve (No. A.20041), near Tammin.
- (12) Cowaramup Bay Reserves.
- (13) Lake Barker Reserve (No. 24049).
- (14) Hamilla Hill area and part of Plantagenet Location 4521 (Mr. E. T. Hancock) for incorporating in the Stirling Range National Park, because of the presence of Cranbrook Bells on the property.

- (15) Hamersley Range Area (Mt. Bruce-Dale Gorge).
- (16) Dampier Archipelago Area.
- (17) Mount Lesueur Area.
- (18) Sir James Mitchell National Park (Res. 18705).
- (19) Flora and Fauna Reserve near Regan's Ford.
- (20) Former Avon Valley Army Training Area (including Bald Hill) near Toodyay.

Other areas receiving consideration or considered suitable for national park or associated purposes are:—

- (1) Napier Range Area including Winjina Gorge. Tunnel Creek has already been created a National Park and it is vested in the Shire of West Kimberley.
- (2) South-West Cave Areas.
- (3) An area along the south coast between Ratcliffe Bay and Irwin Inlet.
- (4) Reserves adjacent to the south coast, south-west of Albany.
- (5) Boronia area on Plantagenet Location 5973 (Mr. H. T. Jasper) about 25 miles north of Albany—negotiations are in progress.
- (6) Kennedy Range Area—raised by a private citizen and being investigated.
- (7) Proposed Coalseam National Park near Mingenew.
- (8) Geekabee Hill Area on Hay Location 861—raised by Shire of Cranbrook and being investigated.

In addition consideration is being given to possible additions to the Kalbarri National Park and also a narrow strip of land in John Forrest National Park adjacent to the Great Eastern Highway is being ceded for road purposes to meet modern requirements of a dual carriageway for this highway.

Hill River Caves Area

Although not under the Board's control, action was taken to co-operate with the Department of Lands and Surveys to seal off the entrance to Drover's Cave in an effort to avoid vandalism in this very attractive cave. It is with regret that I have to report that vandals have broken the lock and hinges off the gate installed.

Classification of Reserves

All reserves vested in this Board have not yet been classified as "A" Class; although it is hoped that finality in this direction will be reached as expeditiously as possible.

INTER-DEPARTMENTAL COMMITTEE ON NATIONAL PARKS AND FLORA AND FAUNA RESERVES

My Board feels that the rapid increase in the development of agricultural lands and the rise in population in both City and Country areas renders it necessary to ensure that adequate areas are set aside as national parks and wildlife reserves for the protection of flora and fauna and vested in an appropriate body for their protection. It will co-operate in the implementation of any decisions reached on the report of the Special Inter-departmental Committee appointed in 1965-66 to consider and report on management generally for national parks, flora and fauna reserves, including the co-ordination of activities where possible. In this regard it is pleasing to note the recent vestings of the Yalgorup National Park and a National Park and a Reserve for the "Preservation of Natural Formations (Pinnacles)" in the Nambung area.

GENERAL POLICY AND PLANNING

The Board's general policy in regard to areas placed under its control is:—

"To so administer the lands under its control, so as to ensure the preservation of their natural beauty, the conservation of native flora and fauna, and the protection of geological and physiographical and other features of special interest.

"To develop and improve certain areas for the purpose of promoting their enjoyment by the public."

It is intended to prepare progressively over-all plans for each of the major national parks and reserves vested in the Board, so that orderly development may be carried out without undue interference with nature. The Board regularly visits areas to familiarise itself with the features and problems and to confer with local authorities and district interests.

A master plan for Yanchep Park is nearing completion and its adoption in the near future is anticipated.

FINANCE

A comparative summary of receipts and payments (in consolidated form) for the past two years

follows and it should be noted that those relating to the year under review are subject to audit.

The Board very much appreciates the sympathetic consideration by the Treasury of its requests for financial assistance. Government grants have increased in line with rising costs of administration and substantially greater areas of control. There is a need for a continuance of this support to ensure that areas vested as National Parks are policed and developed to adequately preserve the natural features and to give the public access to specified areas within the individual parks.

There was a general upward trend in receipts and \$8,832 was received from timber royalties in connection with the felling of die-back trees in the Walpole-Nornalup National Park. The increased Treasury grant included \$5,451 special grant for annual instalment on the purchase of land for establishing the Walyunga National Park. An amount of \$3,000 was received from the Main Roads Department by way of recoup as part cost of providing access roads and tracks in the Walpole-Nornalup National Park, and which are of value for fire control purposes.

RECEIPTS

1966-67		1967-68	
\$	\$	\$	\$
National Parks and Reserves			
10,860		12,274	
34,056		40,056	
4,093		4,572	
135		92	
1,262			
		10,331	
		1,460	
1,239			
	51,645		68,785
Other Receipts			
		53	
119		222	
578		13,348	
11,195		6,455	
6,639			
	18,531		20,078
Garden and Mowing Services			
	10,739		
Grants			
		210,000	
181,300		1,143	
375		3,000	
	181,675		214,143
	262,590		303,006
	361		2,030
	262,951		305,036

PAYMENTS

1966-67		1967-68	
\$	\$	\$	\$
Administrative Expenses			
22,258		25,078	
1,997			
		1,444	
2,362			
		2,305	
1,922		1,938	
	28,539		30,765
National Parks and Reserves			
85,054		92,665	
30,048		36,175	
90,215			
		124,512	
5,559			
		5,451	
	210,876		258,803
Other Payments			
3,140		3,298	
10,664		11,015	
6,685		6,132	
	20,489		20,445
Garden and Mowing Service			
	1,017		
260,921		310,013	
2,030		4,977	
262,951		305,036	



Blue Wren
(Photo by courtesy of the Western
Australian Tourist Development
Authority)

Head Office Salaries and Expenses were higher this year mainly because of increased salary rates and Board inspection fees and expenses associated with a North-West inspection trip. Also a legal retainer fee of \$500 was met for the first time. Workers' Compensation insurance was lower because the preceding year's premium included a premium adjustment relating to the year before.

Increased margins and the employment of extra labour including a Ranger for Kalbarri National Park and temporary labour at John Forrest National Park and Yanchep Park, have had a bearing on the upward movement of wages paid for the year.

The upward trend in operating and maintenance costs is accounted for by increased activity at Yanchep Park and to a lesser extent at the Walpole-Nornalup National Park and Matilda Bay Reserve. At the latter reserve leach drain and septic tank problems proved fairly costly.

Expenditure on improvements was considerably higher and major items under this heading are referred to later in this report. Sundry payments includes such items as Consultant Architect's retainer, Building Supervisor's expenses, Ecological Survey, printing of annual reports and brochures, etc.

ACT AND BY-LAWS

The Board was appointed under the Parks and Reserves Act, 1895-1963, and its powers are defined in this Act, including power to make by-laws. Formerly, the State Gardens Board administered the reserves until reconstituted the National Parks Board of Western Australia when it was made a body corporate, by proclamation dated the 4th April, 1956, and published in the *Government Gazette* of the 13th April, 1956.

A new set of by-laws was approved and published in the *Government Gazette* of the 29th May, 1963, and amendments have been published in the *Government Gazettes* of the 22nd December, 1964, and the 10th June, 1965.

These by-laws are exhibited in appropriate parks and reserves. They are in the process of being revised and brought up to date to meet changing conditions.

ROADS GENERALLY

The Main Roads Department continues to render financial assistance and give practical help in road construction and improvements within national parks and reserves, sometimes in conjunction with the Local Authority of the district concerned.

FIRE CONTROL, ACCESS ROADS AND FIRELINES

As in the past the Forests Department has rendered valuable assistance in fire control matters and local Bush Fire Brigades and Shire Councils have co-operated where necessary.

A firebreak has been constructed along the north-eastern boundary of the Cape Le Grand National Park.

Firebreaks were constructed around the Greenmount National Park, and it is proposed widening those on the north and south sides, because of the extra fire risks from these directions, as evidenced by a bush fire which commenced outside the park on the southern side, and then entered and burnt out this small park after the firebreak system had been installed.

The Forests Department arranged and supervised the construction of a very good firebreak system in the Kalamunda National Park. Further firebreaks were constructed along the eastern side of the Kalbarri National Park. The construction of firebreaks in this park is being carried out progressively for financial reasons, associated with its area of 358,000 acres.

Improvements were effected to firebreaks and some more breaks constructed in the Neerabup National Park and it is hoped during the ensuing year to widen those along the western boundary with the co-operation of the adjoining property owner.

A further firebreak was constructed in the Stirling Range National Park ten chains in from the eastern park boundary firebreak and the ones along the western side of the park and south of Salt River Road respectively were ploughed and graded. Also other firebreaks were graded where considered necessary. In addition a rocky section of about 40 chains near Paper Collar Gully was chemically sprayed for sucker regrowth.

Further progress has been made towards completing a major construction programme on access roads and firelines in the Walpole-Nornalup National Park, and it is hoped to finalise this programme during the ensuing year.

Firebreaks have been constructed during the year along the east, north and west boundaries of the Walyunga National Park, and existing firebreaks were graded.

Board equipment and staff have been utilised in giving attention to firebreak maintenance in the John Forrest National Park, Yanchep Park, Serpentine National Park, and Porongurup National Park.

Controlled burning was carried out by Board Staff in sections of John Forrest, Serpentine (with the help of Forests Department employees) and Walyunga National Parks (with assistance from the local Bush Fire Brigade), and also Yanchep Park.

The local Bush Fire Brigade carried out controlled burning within the Walpole-Nornalup National Park by arrangement.

In the interests of flora generation—particularly wildflower plants—controlled burning is carried out in the autumn where practicable. An amended form of fire reports (including reporting to the local Shire and the W.A. Bush Fires Board) has been instituted and firebreak plans have been prepared for the respective major parks.

Greenmount National Park

A fire entered this park from the south side on the 3rd January, 1968, and completely burnt out this small park of 127 acres.

Neerabup National Park

On the 5th December, 1967, a fire entered this park from the eastern side after jumping the main Perth-Lancelin road and burnt out approximately 800 acres, representing nearly one-third of the park.

Stirling Range National Park

A fire lit by some unauthorised person in the base of a tree west of Redgum Pass Road burnt out a small area of White Gum and scrub country before being brought under control by the Ranger.

Walpole-Nornalup National Park

About 110 acres of scrub country in the north-western part of this park was burnt out on the 5th December, 1967, when a fire escaped from a roadside burn and entered the park. Another small section of a few acres was burnt the same day when a spark from a controlled burn set alight to an adjoining area. In each case the local Bush Fire Brigade was in attendance. Then on the 14th January, some unknown person started a fire in the coastal region in the Long Point-Point Nuyts Section of the park and this took until the 19th January, 1968, to bring under control, due to shortage of firefighters (other bush fires in the district), even though the Forests Department and local Bush Fire Brigade co-operated. About 6,000 acres of sparsely timbered low, scrubby, coastal sand hill type country was burnt out.

Yanchep Park

About 30 acres of wetland north of Gloucester Lodge was burnt out by a fire believed to have

been lit by an unknown person on the 7th March, 1968. Then in the early hours of the 10th January, 1968, a fire broke out in the boiler house at the rear of Yanchep Inn. Fortunately it was extinguished before it could do any damage to the main building; although it gutted the boiler house, wash house and toilets. In consequence of this fire and the need to protect leased premises, staff houses, and parklands, another fire truck of improved design has been ordered and delivery is expected in the very near future.

CONSERVATION OF NATIVE FLORA AND FAUNA

Vegetation Regeneration at Yanchep Park after a Bush Fire

Observation of vegetation regeneration at Yanchep Park following a bush fire in December, 1964, was continued with the assistance of a botanist from the Department of Agriculture. Measurement of plant cover carried out in the study areas at Yanchep Park showed that those perennial species which regenerated from woody rootstocks have in the main shown increases in size and cover. The shrubs which have grown from seed since the fire, have decreased in number, but those surviving have increased in size. Annuals both native and naturalised, though still present, are less evident in all plots.

The species which have recovered most effectively is the Native Buttercup (*Hibbertia hypericoides*), although Blueboy (*Stirlingia latifolia*), Coastal Leschenaultia (*L. linarioides*) and Jacksonia sternbergiana have grown well. Seedlings of Parrot Bush (*Dryandra sessilis*), Yellow Tail Flower (*Anthocercis littorea*) and both Tuart and Jarrah have decreased in numbers. On the limestone areas Native Buttercup and *Melaleuca huegelii* are the predominant species in the new growth.

Vegetation of Yanchep Park Loch McNess Area

The Professor of Botany and his staff at the University of Western Australia are co-operating and rendering assistance in relation to botanical studies in certain National Parks and Reserves under the control of this Board.

It is pleasing to report the issue, during 1967, of a paper dealing with the vegetation of the Loch McNess area at Yanchep Park. This publication is titled "A Preliminary Account of the Vegetation of Loch McNess, a Swamp and Fen Formation in Western Australia" by Dr. J. A. McComb and A. J. McComb. The authors are thanked for their interest and worthwhile contribution on this subject.

Biological Survey of the Kalbarri National Park

Likewise the West Australian Museum is co-operating in the conduct of biological surveys of certain National Parks under Board control and Mr. J. Bannister of the W.A. Museum was in charge of an expedition which carried out a preliminary survey of the Kalbarri National Park in May, 1968, and his party included a botanist kindly made available by the Department of Agriculture. The relative report is expected to be presented shortly, after which it is anticipated a further more comprehensive survey will be conducted in the Springtime. In the meantime controlled mustering of wild goats and wild pigs has been permitted for a restricted period, in the hope of decreasing their numbers in this area. The wild pigs in particular are most destructive.

Wildflower Cultivation and Conservation

Further wildflower plants have been planted out in centrally situated wildflower beds at John Forrest National Park and Yanchep Park. Also planting has been extended to selected areas alongside the scenic drives in these parks.

Wildflower beds are being established and plantings augmented at Coalmine Beach in the Walpole-Nornalup National Park and in the Moingup Spring area in the Stirling Range National Park.

The native shrubs planted around the Bluff Knoll parking area in the Stirling Range National Park are making progress after recent planting of some replacements.

Native plants have been acquired from private wildflower nurseries and other sources. The question of establishing enlarged nursery facilities at Yanchep Park is still being investigated, with a view to providing propagation facilities for propagating native plants which private or commercial nurseries cannot or are not permitted to propagate, such as plants endemic to certain national parks.

Tree Planting

A tree planting programme has been carried out in the vicinity of the south side of the Lesmurdie Brook in the Lesmurdie Falls National Park. Another such tree planting programme has been undertaken alongside the access road to Walyunga Pool near the western boundary of the Walyunga National Park and also Bottle Brush have been planted around the newly constructed public toilets near Walyunga Pool.

Further planting has been carried out at Yanchep Park and nearby flora reserves of eucalypts suitable for Koala feed.

Native Fauna

Native fauna is protected in national parks and reserves under the control of the Board and consequently shooting is not permitted in them.

Kangaroos, wallabies, emus, parrots, rosellas, budgerigars and finches are on exhibit at Yanchep Park, where black swans and ducks frequent Loch McNess and the ornamental lakes. The ornamental lakes near Gloucester Lodge have been cleaned out and this action should improve their appearance and benefit the health of the birds frequenting them.

Two female Koalas arrived at Yanchep Park on the 13th July, 1967, as a gift from the Lone Pine Koala Sanctuary in Queensland.

Negotiations were commenced during the previous year as a means of introducing new breeding stock to help overcome the problem of inbreeding of this small colony. We appreciate the kind gesture in making these Koalas available. There were two births during the year and the twin Koalas born about December, 1966, first emerged from their mothers pouch in July, 1967. As far as is known these are the first twin Koalas born at Yanchep Park. They are making excellent progress and have proved a great attraction. Four Koalas died during the year and post mortems were conducted on them, except Queenie (19 years) who died of old age. Her carcase was delivered to Professor David B. Allbrook of the Department of Anatomy at the University of Western Australia for scientific research into locomotor patterns. Thus the little colony of koalas at Yanchep has remained static over the past year, and there were still 24 of them at Yanchep Park on the 30th June, 1968.

Testing of eucalypt leaves fed to koalas is being carried out regularly at both Yanchep Park and the Department of Agriculture for their cyanide content, with a view to minimising deaths or illness from this source.

Koala twins at Yanchep Park



SPRINGTIME WILDFLOWER WALKS

Visitors to Yanchep Park and John Forrest National Park may take part in conducted wildflower walks if they so desire and centrally located wildflower beds in these parks are name-plated for their information.

SIGNPOSTING OF NATIONAL PARKS AND RESERVES

Experiments have been conducted at Yanchep Park into the use of dressed timber for entrance signs depicting only the name of the park and separate individual signs indicating protection of flora and fauna, use of fireplaces and rubbish containers, etc., will be erected at suitable points within the park. A design for a concrete entrance sign has also been under consideration, but economics may dictate use of the less expensive timber sign, which is very attractive and could be more suitable in certain national parks. Progress in the erection of new type entrance signs at the boundaries of national parks is expected to be accelerated during the ensuing year. There is a need to standardise signs in our National Parks and current experiments are directed to this end.

NOXIOUS WEEDS

Additional noxious weed spray equipment was acquired for John Forrest and Stirling Range National Parks and follow-up spraying of *Watsonia* was carried out at John Forrest, Lesmurdie Falls, Serpentine and Walyunga National Parks. Also some spraying of Cape Tulip was undertaken at Walyunga National Park and spraying of Cape Tulip and Lupins at Yanchep Park. Soldier (or Spear) Thistle and Blackberry were sprayed in the Porongurup National Park.

MAJOR IMPROVEMENTS

The main improvement works undertaken during the year and either completed or in progress were new brick toilet blocks at the Lesmurdie Falls and Walyunga National Parks, Ranger's residence at the Kalbarri National Park, swimming pool reconstruction and filtration at Yanchep Park, electrical extension and reticulation for Coalmine Beach in the Walpole-Nornalup National Park, re-alignment of electricity line to Pelican Point in the Matilda Bay Reserve, electrical extension at John Forrest National Park, priming and sealing the parking area and providing electricity to the public change-rooms and toilets at Hamelin Bay.

Fairly substantial sums were spent on access roads and fireline construction in the Walpole-Nornalup and Kalamunda National Parks and to a lesser extent in the Cape Le Grand, Greenmount,

Kalbarri, Neerabup, Stirling Range and Walyunga National Parks.

Temporary public toilets were purchased and erected in the Cape Le Grand and Kalbarri National Parks and a storage shed made available to the Ranger of the latter park.

NEW VEHICLES, PLANT AND EQUIPMENT

Four wheel drive vehicles were acquired for Mobile Ranger No. 1, John Forrest National Park, and Walpole-Nornalup National Park. A diesel tractor and attachments were purchased for the Stirling Range National Park and fire-fighting trailer units were supplied to the Rangers at the John Forrest, Kalbarri, and Stirling Range National Park. In addition a four wheel drive fire unit is on order for use at Yanchep Park in the protection of leased properties, staff houses and parklands.

A blowmister, power drills and mower were made available to John Forrest National Park; concrete mixer, welding plant, power drill and small lighting plant for Stirling Range National Park; a winch for Ranger's Landrover at Walyunga National Park, and two-way radios for fire control in the Stirling Range and Walpole-Nornalup National Parks.

PURCHASE OF PARKLANDS

A further annual instalment of \$5,451 was met during the year in connection with the purchase of the land acquired for establishment of the Walyunga National Park.

STANDARD BARBECUE FIREPLACES AND PICNIC TABLES

More standard concrete barbecue fireplaces have been acquired and distributed among the more popular parks. The Tourist Development Authority has subsidised the cost of these. For economic reasons, other type fireplaces are being provided at the more distantly located parks.

Standard picnic tables are being pre-cut and manufactured at Yanchep Park for distribution and subsequent assembly in the various parks.

LANDSCAPE AND CONSULTANT ARCHITECTS

The services of Landscape Architect, Mr. John Oldham, A.R.A.I.A., M.A.P.I., F.I.L.A., were made available by the Under Secretary for Works during the year to assist in the preparation of master plans for individual national parks and reserves, and the services of Mr. R. J. Ferguson, A.R.A.I.A. continue to be utilised for the planning of individual buildings.

Cranbrook Bell
(*Darwinia meboldii*)

FIELD STAFF

Increased margins have been granted to the field staff and a sample of a new uniform for Rangers obtained for final approval before issues are made to the Rangers in the near future. Superintendent, Mr. J. Dale of Yanchep Park attended a Ranger's Course conducted by the New South Wales National Parks and Wildlife Service in October, 1967, and it is hoped to hold a similar type course in W.A. in the not too far distant future.

The increasing popularity of the Walyunga National Park since its acquisition has resulted in Mobile Ranger Mr. J. H. Rose being employed there full-time except for regular weekly clean-up and rubbish removal duties required at the Lesmurdie Falls and Serpentine National Parks.

Mobile Ranger, Mr. N. Walmsley has been employed for periods at the Cape Le Grand, Cape Range, Kalbarri, Lesmurdie Falls and Serpentine National Parks and he has acted as relief Ranger in charge at the Stirling Range, Walpole-Nornalup, and Walyunga National Parks. Messrs. D. Bathgate and V. J. Buchanan continue to act as honorary rangers for the Cape Range National Park, Mr. J. Rate for the Walpole-Nornalup National Park, and Mr. W. J. Kirwan for the Cape Le Grand National Park.

Mr. E. Pederick relinquished his position of Honorary Ranger for the Kalbarri National Park upon leaving the district and Mr. E. Grinham was appointed in his place. He and Mr. R. Glass continue to act, notwithstanding a full-time Ranger (Mr. R. E. H. Gliddon) was appointed for this park during the year.

Messrs. Rab, Douglas and Cameron Bell of Brooking Station and Fauna Warden Mr. V. T. Nelson of Wyndham have been appointed Honorary Rangers for the Geikie Gorge National Park. Arrangements are in hand for Mobile Ranger, Mr. Walmsley to proceed in the near future to the Geikie Gorge National Park to assemble and site picnic tables and barbecue fireplaces and also erect signs and temporary toilets.



The help of these and other Honorary Rangers is recognised and their services are most helpful in the administration of outlying national parks and reserves. In addition Civil Commissioner Col. J. K. Murdoch of Exmouth has been of considerable assistance in matters associated with the Cape Range National Park.

ALGAE REMOVAL

Assistance is still being given to the Swan River Conservation Board in the employment of workmen and storage of plant and equipment at the Matilda Bay Reserve for algae clearance purposes along the Swan River generally, including the foreshore fronting the Matilda Bay Reserve. This arrangement has yielded good results in algae-free beaches and the Swan River Conservation Board has recouped expenditure incurred on its behalf.

PUBLICITY

Press, radio and television coverage of events and items of interest in national parks and reserves was given during the year.

The Deputy President and the Managing Secretary gave lectures on national park matters and the opportunity was taken in each case to bring under notice the need for conservation of flora and fauna in these parks.

A brochure on John Forrest National Park is in the process of being printed and planning of a new brochure on the Stirling Range National Park is well advanced. Also some progress has been made in the planning of a new brochure for the Walpole-Nornalup National Park.

Exhibits were provided at the Fourth Annual Wildflower Exhibition staged at King's Park in late September, 1967, and also at the Wildlife Show held in the Perth Town Hall earlier in September, 1967.

HISTORICAL PLAQUES

Grants for this purpose are limited to a maximum of \$40 or the cost of the plaque, whichever is the lower. No such grants were made during the year; but one application is being investigated at present.

VANDALISM

Some cave formations have recently been damaged in the Crystal Cave at Yanchep Park and this offence is being investigated. Also the entrance to Mambibby Cave was resealed following acts of vandalism. Reports are to hand and are being investigated regarding alleged damage in the Nambung Caves and Pinnacles Area south of Jurien Bay. Drover's Cave was sealed off on behalf of the Department of Lands and Surveys in July, 1967; but vandals have already smashed the lock and broken the entrance gate off its hinges. In addition vandals have been active in the Cape Le Grand National Park, Matilda Bay Reserve, Lesmurdie Falls National Park, Walyunga National Park and Yanchep Park. The Crystal Cave at Yanchep Park was broken into during the year and the proceeds from the Wishing Well stolen. The help of the Police has been sought where possible, but the culprits are difficult to catch in the act. The co-operation of the public in promptly reporting incidents of this nature could prove helpful in this respect.

BOARD INSPECTIONS

The President, Board Members and the Managing Secretary have made periodical inspections of national parks and reserves under the Board's control, sometimes as a Board and at other times individually, according to the circumstances.

Geikie Gorge National Park in the North-West portion of the State was inspected by the Board this year for the first time, in conjunction with an investigation of other areas of National Park potential.

John Forrest, Greenmount, Kalamunda, Lesmurdie Falls, Neerabup, Porongurup, Stirling

Range, Walpole-Nornalup and Walyunga National Parks and also Yanchep Park were visited during the year.

These visits are helpful in formulating park policy.

IMPORTANT VISITORS

His Excellency Major General Sir Douglas Kendrew, K.C.M.G., C.B., C.B.E., D.S.O., paid an unofficial visit to Yanchep Park during the year and His Excellency The Ambassador of the Union of Soviet Socialist Republics, Mr. N. Y. Tarakanov and Madam Tarakanova also visited this park recently.

SEPARATION OF ZOOLOGICAL GARDENS AND NATIONAL PARKS BOARD ADMINISTRATION

This change in administration became effective from the 1st February, 1968, and has helped in streamlining some of the functions of these two organisations. The greatest benefit has been the ability of the respective administrative staffs to concentrate on their specific problems.

GENERAL

The financial assistance rendered by the State Treasury is acknowledged with thanks, along with the professional advice and practical help given by Officers of various Government Departments and Organisations.

Also the Board appreciates the assistance rendered by Shire Councils and Bush Fire Brigades in whose districts the national parks and reserves concerned are located.

It is acknowledged that the Walpole-Nornalup National Park Advisory Committee continues to play its part in relation to the Walpole-Nornalup National Park.

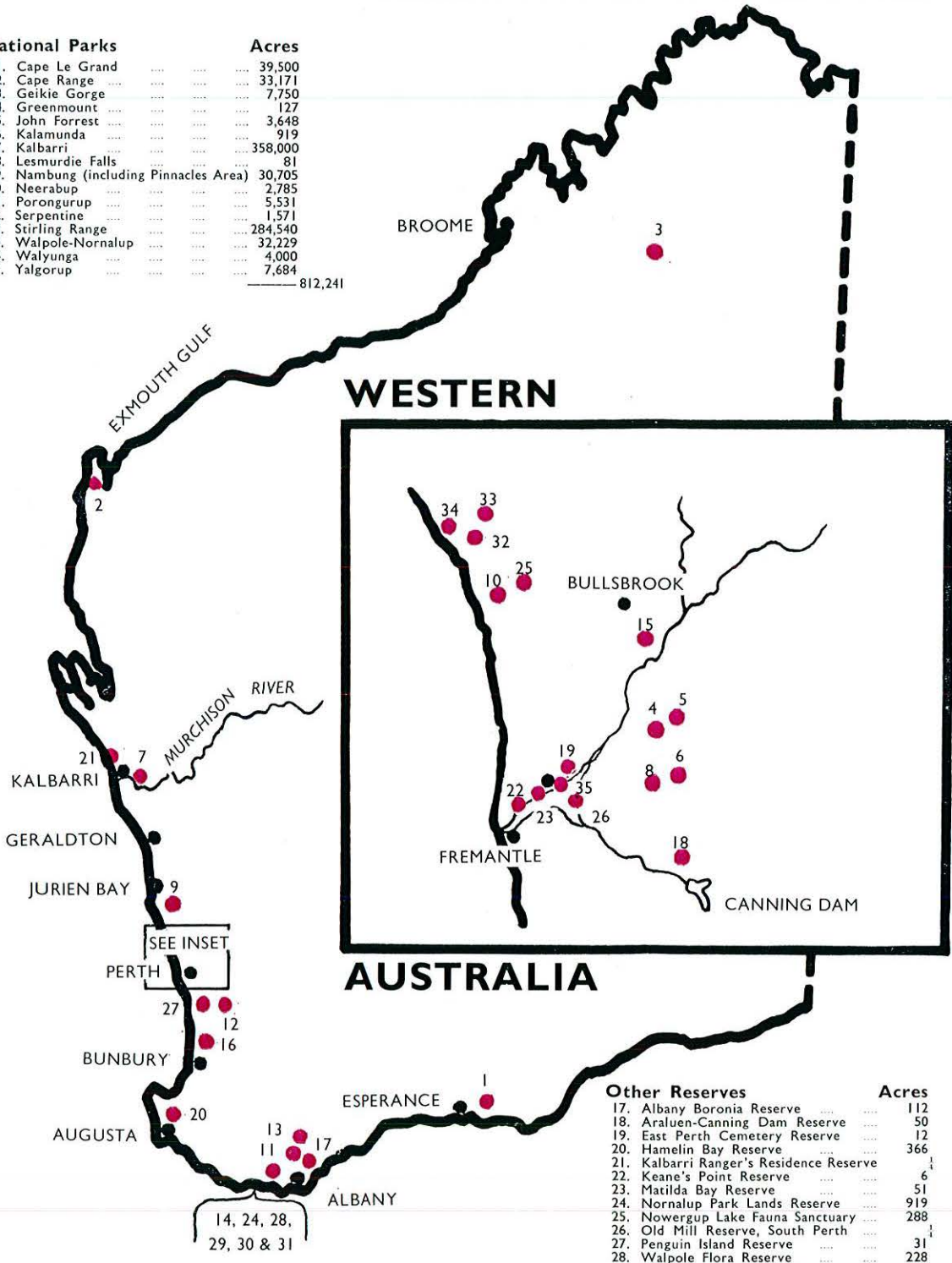
Members join with me in expressing appreciation of the assistance rendered throughout the year by the Managing Secretary, his Head Office staff and Field Officers; also the help given by the Landscape Architect, Consultant Architect and the Honorary Building Supervisor.

More detailed information on activities within the individual national parks and reserves is given in the Appendices to this report.

R. J. BOND,
President

National Parks Board of Western Australia.

National Parks	Acres
1. Cape Le Grand	39,500
2. Cape Range	33,171
3. Geikie Gorge	7,750
4. Greenmount	127
5. John Forrest	3,648
6. Kalamunda	919
7. Kalbarri	358,000
8. Lesmurdie Falls	81
9. Nambung (including Pinnacles Area)	30,705
10. Neerabup	2,785
*11. Porongurup	5,531
12. Serpentine	1,571
13. Stirling Range	284,540
14. Walpole-Nornalup	32,229
†15. Walyunga	4,000
16. Yalgorup	7,684
812,241	



Other Reserves	Acres
17. Albany Boronia Reserve	112
18. Araluen-Canning Dam Reserve	50
19. East Perth Cemetery Reserve	12
20. Hamelin Bay Reserve	366
21. Kalbarri Ranger's Residence Reserve	1
22. Keane's Point Reserve	6
23. Matilda Bay Reserve	51
24. Nornalup Park Lands Reserve	919
25. Nowergup Lake Fauna Sanctuary	288
26. Old Mill Reserve, South Perth	1
27. Penguin Island Reserve	31
28. Walpole Flora Reserve	228
29. Walpole Golf Course Reserve	35
30. Walpole Ranger's Residence	1
31. Walpole Yacht Club Reserve	2
32. Yanchep Park and Caves Reserves	6,394
33. Yanchep Flora Reserves	439
34. Yanchep Beach Reserve	44
35. Small Part of King's Park Reserve (Bernies)	1
8,979	
821,220	

appendices

NATIONAL PARKS AND RESERVES

National Parks are listed first in alphabetical order, followed by other reserves listed in similar order:—

APPENDIX A NATIONAL PARKS

CAPE LE GRAND NATIONAL PARK

Control

Mr. W. Kirwan of Mt. Merrivale via Esperance acts as honorary ranger for this distant park, located on the South Coast a few miles east of Esperance. Mobile Ranger Mr. N. Walmsley has made periodical visits to this park for the purpose of effecting improvements, such as erection of temporary toilets, picnic tables and fireplaces.

Fire Control

A firebreak was constructed along the eastern boundary of the park by the Shire of Esperance, at the Board's expense and it was hoped to construct a further firebreak, but inclement weather delayed action.

Access Roads

Some improvements were effected to the access road to Lucky Bay, but it is reported that recent heavy rain has resulted in a deterioration in this road. The Shire of Esperance kindly organised the improvements at the Board's expense.

Temporary Toilets

Temporary toilets have been supplied and located at Cape Le Grand and Lucky Bay. However vandals have been active in pushing over those at Cape Le Grand, with consequent damage to them.

Barbecue Fireplaces

A few more fireplaces have been supplied and located in the Lucky Bay area.

CAPE RANGE NATIONAL PARK

Control

Col. J. K. Murdoch, Civil Commissioner at Exmouth still continues to render valuable assistance in planning and for improvements in this park. He has been ably supported by Honorary Rangers, Messrs. V. J. Buchanan and D. Bathgate of Exmouth. Mobile Ranger Mr. N. Walmsley made one visit to this park during the year and effected some improvements.

Fire Control

Due to the fact that the foothills of this range are outside the park, the construction of firebreaks in the park is impracticable.

Access Roads

The assistance of the Shire of Exmouth was utilized in arranging during the year grading of the Charle's Knife and Shothole Canyon roads, but reported heavy rains in June, 1968 have had a serious effect on the condition of both these roads.

Consequently negotiations are in progress towards having the damage repaired as soon as possible.

Signs

"Caution" and "Steep grade" signs have been erected alongside the Charle's Knife road, and also a picnic site direction sign. In addition an information road sign has been erected near the approach road to Shothole Canyon.

Picnic Areas

Four picnic areas were cleared adjacent to the Charle's Knife road and a picnic table, fireplace and garbage bin were provided at three of these. Also a picnic area was cleared at the former oil well site adjacent to the Shothole Canyon road and a picnic table, fireplace and garbage bin were provided. Reports indicate that these picnic areas are being well patronised.

Public Toilets

It is proposed erecting public toilets near the picnic areas alongside the Charle's Knife and Shothole Canyon roads, respectively.

GEIKIE GORGE NATIONAL PARK

Control

Messrs. Rab, Douglas and Cameron Bell of Brooking Station and Fauna Warden Mr. V. T. Nelson of Wyndham have been appointed honorary rangers for this park, which was first inspected by Board members in June, 1968. Mobile Ranger Mr. N. Walmsley will be sent north shortly to Geikie Gorge in order to effect certain improvements there.

Fire Control

No action has been taken yet towards initiating a firebreak plan.

Access Roads

These have been recently graded and it seems that similar action is needed promptly each year just after the end of the rainy season.

Signs

Entrance and picnic area signs are in the process of being made up and should be erected in position shortly. The entrance signs will be in dressed Jarrah with grouted letters picked out in white.

Temporary Toilets

Two sets each of ladies and gents temporary public toilets are on order and should be in position shortly. Because of seasonal flooding these toilets will have to be moved each year just before the rainy season commences and then re-erected in position after the finish of the rainy season.

Picnic Tables and Barbecue Fireplaces

Arrangements are in hand to erect six of each in the picnic areas near Geikie Gorge.

GREENMOUNT NATIONAL PARK

Control

This small national park on the western edge of the Darling Range escarpment is under the supervision of the John Forrest National Park Superintendent.

Fire Control

Firebreaks were constructed around this park at the approach of the closed bush fire season; but this did not stop a very severe bush fire from entering the park on the south side and completely burning it out. However the firebreaks were of assistance in saving private homes and properties adjoining the eastern side of the park. The firebreaks on the south and north sides of the park are to be widened when plant is available for this purpose.

General

Apart from signposting and the provision of a good sealed access road, this small park is being left in its natural state.

JOHN FORREST NATIONAL PARK

Control

Superintendent Mr. G. R. Edwards is in charge of this park and he has under his control a small staff of 6 workmen. He also exercises control over a few other nearby national parks. He resides on a small property adjoining the eastern side of the park.

Fire Control

The usual firebreak maintenance and controlled burning were carried out by park employees during the year. The Park is divided up by firebreaks into a number of compartments which are control burnt in rotation over a 3-4 year cycle.

A new trailer type firefighting unit with tank was acquired.

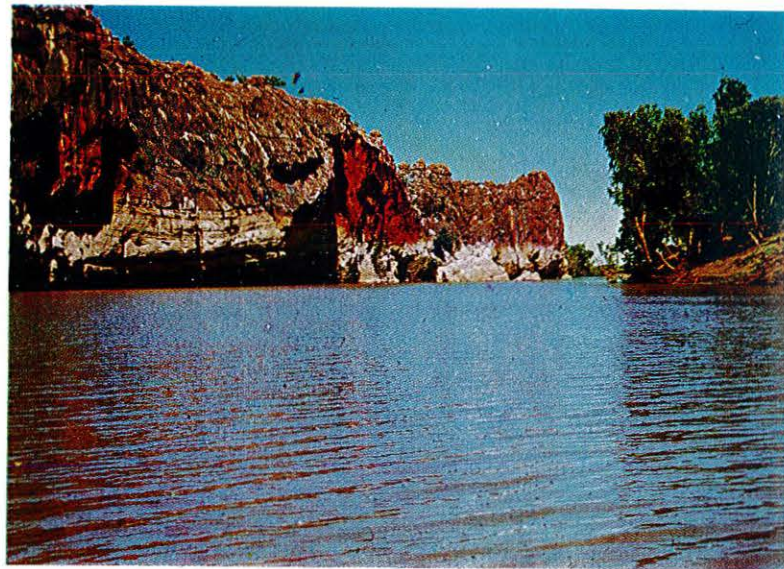
Road Access and Car Parks

Further delay has been experienced in having improvements effected to the access road to the main parking areas and the provision of additional vehicle parking areas.

Native Flora

This park is rich in native flora and the wildflowers are usually at their best during August-October, dependent upon weather conditions. Additional wildflower garden beds have been prepared and many more wildflower plants have been planted out in centrally situated garden beds and at selected points alongside the main scenic drive.

Name-plating of native flora was continued, as an aid to visitors in the identification of wildflowers, who may take part in springtime wildflower walks if they so desire.



Geikie Gorge, Geikie Gorge National Park

Footbridge over Jane Brook upstream from Gauging Weir

This rustic bridge has been rebuilt.

Rustic Church

This small building was completely rebuilt in December, 1967.

Picnic Shelters

A certain amount of experimentation has been carried out in picnic shelter design for this park and a few additional such shelters were erected during the year, along with the rebuilding or repair of others.



Burtonia scabra R.Br.
(Photo by courtesy of the Western Australian Tourist Development Authority)

Rustic Playground Equipment

A rustic footbridge has been built over Glen Brook downstream from the water storage dam as a means of access to a playground, where work is in progress towards building a log cubby-house above ground level and located between two trees.

Improvements, Vehicles, Plant and Equipment

Electricity was connected to the Workshop and new picnic shelters and rustic seats constructed. A new trailer firefighting unit was acquired, along with a four wheel drive utility.

Noxious weed spray equipment was purchased, as also were a small rotary mower, a power drill and a mobile power drill.

Some piping was purchased for reticulation of garden areas.

Noxious Weed Control

Follow-up spraying of *Watsonia* was continued along the banks of Jane Brook in an effort to control its spread. This is rendered necessary because corms and seeds are continually being washed down from other properties further upstream.

By-laws

The Board's by-laws are exhibited near the Tea-room.

KALAMUNDA NATIONAL PARK

Control

The Superintendent from John Forrest National Park also supervises this park.

Fire Control

A comprehensive firebreak system was constructed in this park during the year, with the help of the Forests Department whose officers arranged the calling of tenders and supervision of the work on our behalf. The Board recouped the cost.

General

This park with its very undulating terrain and wildflower areas is very attractive and it is being left in its natural state.

KALBARRI NATIONAL PARK

Control

Mr. R. E. H. Gliddon was appointed Ranger for this park on the 12th February, 1968 and after a short term of preliminary training at Yanchep Park, he took over the duties about mid March, 1968. Earlier Mr. E. Grinham was appointed an honorary ranger for this park, as a replacement for Mr. E. Pederick, who has left the district. The appointments of Messrs. E. Grinham and R. Glass as honorary rangers have not been cancelled upon the appointment of a full-time ranger, because it is felt that they can still be of assistance in patrol work.

Extra Territory

Negotiations are still in progress for the acquisition of further territory adjoining the northern boundary of the park in "The Loop" area and also along the scenic coastline south of Red Bluff in the west.

Fire Control

Further firebreaks were constructed during the year along the eastern boundary of the park and the ranger was provided with a trailer type firefighting unit.

Access Roads

Access to the Loop is still only suitable for four wheel drive vehicles and improvements to this road did not eventuate in 1967-68 as hoped. The access roads to Ross Graham Lookout and Hawk's Head Lookout have suffered damage from recent heavy rains and arrangements are in hand for repairs to be effected.

Ranger's Residence, etc.

A water supply was arranged and a store shed erected on Kalbarri Town Lot No. 155, preparatory to the commencement of building operations following the signing of a contract for erection of a ranger's residence on this site. The State Housing Commission, arranged the letting of contract and it is arranging supervision of the job.

Temporary Public Toilets

These facilities have been provided near the picnic areas at Ross Graham, Hawk's Head and The Loop Lookouts.

Picnic Tables and Fireplaces

One of each was provided near the Ross Graham, Hawk's Head and The Loop Lookouts.

Biological Survey

Activities in regard to a biological survey of this park are referred to in the main body of this report.

Wild Goat and Wild Pig Problems

Also referred to in the main body of this report.

Unveiling of a Plaque to the Memory of the Late Ross Graham

The unveiling of this plaque took place on Easter Monday the 15th April, 1968. The memorial seat and lookout structure erected by the parents and friends of the late Ross Graham, have been sited at the Ross Graham Lookout and are in memory of a dedicated conservationist. The unveiling was performed by the Reverend Canon Watts in the presence of a small gathering, including his parents, relatives and friends, and at which the Board was proud to be represented.

Appreciation

The Board would like to record its appreciation of the assistance rendered by Mr. E. Pederick during his term as honorary ranger for this park.

LESMURDIE FALLS NATIONAL PARK

Control

General Supervision of this small park located on the western edge of the Darling Range escarpment is under the control of the John Forrest National Park Superintendent. The services of Mobile Rangers, including the one stationed at Walyunga National Park have been utilised to keep the picnic area clean and tidy.

Fire Control

The hilly nature of this park creates problems in connection with the construction of firebreaks, and this has delayed their construction.

New Public Toilet Block

A new brick public toilet block was constructed this year and the old toilets demolished and removed.

Tree Planting Programme

Small dead timber was culled out, and in the vicinity of 80-100 selected species of shrubs and trees planted, adjacent to Lesmurdie Brook.

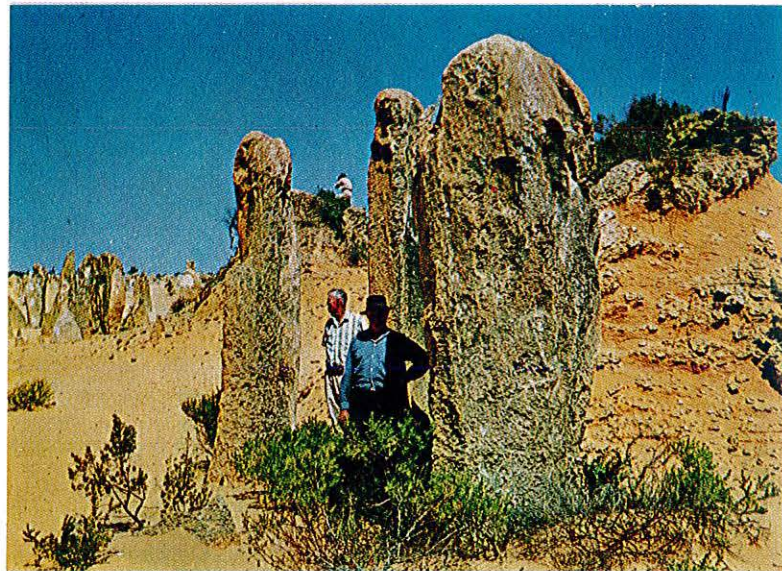
Noxious Weed Control

Follow-up spraying of *Watsonia* was carried out during the year.

NAMBUNG NATIONAL PARK
(INCLUDING PINNACLES AREA)

Control and General

The vesting of the whole area comprising this national park is incomplete. In the meantime weekend patrols have been organised from Yanchep Park because of verbal reports on vandalism in the area, including cave damage and pushing over of pinnacles.



Pinnacles in Nambung National Park

NEERABUP NATIONAL PARK

Control

Supervisory control is exercised by the Yanchep Park Superintendent.

Fire Control

The firebreak system was added to and existing firebreaks maintenance carried out prior to the closed bush fire season. However this did not stop a fire jumping from private property over the



*Tree in the Rock, Porongurup National Park
(Photo by courtesy of the Western Australian Tourist Development Authority)*

main road and eastern firebreak and burning out about 800 acres of bushland.

In the meantime arrangements are in hand to widen some of the firebreaks during the coming year.

Unauthorised Cutting of Timber

Legal action has been initiated in respect of unauthorised cutting of timber in this park.

General

Wildflowers grow profusely in this park which is being maintained in its natural state. Every effort is being made to oppose the granting of mineral licences for quarrying of limestone and building stone in this park.

PORONGURUP NATIONAL PARK

Control

This park is under the supervision of the Stirling Range National Park Ranger and his assistant.

Fire Control

Firebreak maintenance was carried out during the year by Board workmen.

Access Roads

Repairs to "The Pass" road will be needed once the winter rains are over and arrangements are being made accordingly.

Noxious Weeds

Further spraying of Blackberry and Soldier Thistle was carried out and the Ranger in charge has been supplied with spray equipment for follow-up spraying action.

SERPENTINE NATIONAL PARK

Control, etc.

Part-time Ranger Mr. W. G. Baldwin collects vehicle entrance fees and cleans the changerooms and toilets. Mobile Ranger Mr. J. H. Rose cleans up the picnic area and empties the rubbish bins weekly, and Mobile Ranger Mr. N. Walmley has also helped with the maintenance of picnic facilities when available.

Fire Control

The John Forrest National Park Superintendent and the Forests Department worked in close co-operation in organising the maintenance of firebreaks in this park during the year. Also some controlled burning was carried out.

Access Roads and Bridge

Improvements to the access road to the falls are in progress and bridge access to the northern side of the Serpentine River for picknicking purposes looks like eventuating in the near future.

Noxious Weed Control

Some further spraying of Blackberry and Watsonia was carried out, but vehicle access to patches of blackberry in the northern section of the park presents its problems and has held up spray action there.

STIRLING RANGE NATIONAL PARK

Control

Ranger Mr. J. Andrews took over the control of this park from Mr. F. A. Spratt, who retired on the 15th January, 1968. The Ranger is located at Moingup Spring and the Assistant Ranger resides temporarily in a caravan at the Bluff Knoll turn-off.

Fire Control

Further firebreak construction was carried out during the year as referred to in the main body of this report, along with maintenance of existing breaks. This large park will have to be broken up progressively by firebreaks into compartments for improved fire safety and controlled burning purposes.

A trailer type firefighting unit was supplied to the Ranger. Also a two-way radio was installed in the Assistant Ranger's four wheel drive vehicle following earlier installation of a two-way radio in the Ranger's vehicle, and it now means that he and the Ranger are capable of contacting local bush fire brigades in the event of a bush fire.

Access Roads

The Bluff Knoll access road is about five miles in length, of which the final one and seven-tenths miles has been bitumenised, including a section of very steep grade.

Further work has been carried out by the Main Roads Department on the Stirling Range Drive, which is now quite trafficable and of considerable scenic value.

Small car parks and picnic facilities have been established at strategic points alongside this road. It is planned providing more of them in 1968-69.

Rough access, including a crossing over a creek has been provided from Stirling Range Drive to Peak Talyuberup and Mt. Magog.

Walking Paths

The maintenance and improvement of existing walking paths is receiving attention and new paths are being constructed to peaks adjacent to the Stirling Range Drive.

Proposed Staff House, Caravan Park and Water Supply

The provision of these facilities has of necessity been deferred pending receipt of a final report and recommendation for the establishment of a water supply, following prolonged investigations.

Water Supply at Redgum Spring

Further problems in connection with water pollution of this water supply have been encountered and the question of establishing an alternative water supply is being investigated.

Electricity

A small 3K.V.A. lighting plant was installed at the Moingup Spring area and electricity connected to the public toilets, staff house and garage.

Telephone

In the past it has been difficult to maintain close contact with the Rangers in this park but this problem seems to have been overcome by recent arrangements made for an extension of the telephone line from a point south of Amelup to the Bluff Knoll turn-off.

The Board was required to finance this extension which I am pleased to report is nearly completed.

Vehicles, Plant and Equipment

Those items purchased included a diesel tractor and attachments supplied for fire control and other purposes, along with a firefighting unit referred to earlier.

An oxy-welding plant, small concrete mixer and power drill were made available to the Ranger, because of his comparative isolation. Also a noxious weed spray outfit was purchased for use in this park and at the Porongurup National Park.

Barbecue and Picnic Tables

Additional units have been supplied and located in suitable positions alongside access roads in the park.

Directional Indicator at Bluff Knoll Parking Area

Plans are in progress towards installing a directional indicator depicting the main peaks, their heights and distances away.

Outline Plan of Stirling Range

It is hoped to have such a plan sited alongside the Albany-Borden road near the southern boundary of the park, once positive identification of peaks has been established.

Appreciation

The Board wishes to record its appreciation of Ranger Mr. F. A. Spratt's services.

WALPOLE-NORNALUP NATIONAL PARK

Control

Ranger Mr. L. G. Gunson and his assistant are entrusted with the responsibility of looking after this very attractive park and they both reside at Coalmine Beach, where camping and caravanning facilities are available to the public. Mr. J. Rate, who is a member and secretary of the Walpole-Nornalup National Park Advisory Committee, also acts as an honorary ranger and takes a very active interest in park matters.

Walpole-Nornalup National Park Advisory Committee

Councillor Mr. J. Burton of the Denmark Shire Council joined this Committee during the year as the Shire's representative. This now means that both the Shires of Denmark and Manjimup are represented on this Committee, which now comprises Messrs. J. D. Hull (Chairman), J. Burton, T. C. Cooper, P. Harbin, J. H. Rate (who also carries out the secretarial duties) and E. S. Thompson.

This Committee continues to present the local view point and make recommendations on matters associated with this park.

Its efforts are appreciated and the Board usually meets the Committee at least annually at Walpole.

By-laws

The Board's by-laws are exhibited at Coalmine Beach.

Fire Control

The Walpole Bush Fire Brigade has co-operated in carrying out controlled burning in this park and in conjunction with the Forests Department has helped fight bush fires as referred to in the main body of this report.

A two-way radio was installed in the Ranger's 4-wheel drive vehicle for fire control purposes and a spare cradle was fitted to the other vehicle for use when required.

Access Roads and Track Construction (including firelines)

Further progress was made in the construction and improvement of access roads in a section of this park north of the South Coast Highway, including work on Hilltop and Circular Pool roads. This is part only of a major programme being spread over several years. It has been partly financed by a Main Roads Department contribution and also from timber royalties. A small car park has been established near Circular Pool.

The heavy rain fall and the type of terrain has presented some problems, which is necessitating

the construction of many culverts. Some of these have already been constructed, but many more will need constructing during 1968-69. A crossing has yet to be constructed over Cotton Creek.

Maintenance grading of these access roads will be necessary during the coming year.

Access Road to Coalmine Beach and around The Knoll Scenic Drive

The bitumenising of a further section of the access road to this beach has been delayed and it is now expected to be carried out next year.

Gravelling of a section of roadway down a slippery hill on The Knoll Scenic Drive was arranged and financed by the Board. Also this road was graded and it is hoped to have the slippery section referred to bituminised eventually.

Two small car park lookouts have been constructed adjacent to The Knoll Scenic Drive and these give visitors outstanding views of Nornalup Inlet and Coalmine Beach respectively.

Logging

It is against the Board policy to allow logging in national parks, but felling of die-back timber has been permitted in this park by arrangement with the Forests Department. The return from timber royalties has been used in financing the construction of access roads and firelines as an added means of fire protection for this heavily timbered park, with its many stands of Karri, Jarrah, Marri and Tingle.

Electricity

Completion of the erection of a H.T. electricity line and step-down transformer to service the Coalmine Beach area was delayed because of shortage of suitable aerial wire, but it is hoped the job will be completed in the very near future.

Arrangements are in hand for reticulation of the Coalmine Beach area, including light and power to staff houses, garage--workshop, caravan park, amenities block, public change rooms, public toilets and street lighting.

Vehicles Plant and Equipment

A 4-wheel drive utility and a two-way radio were supplied to the Ranger. Also some more playground equipment was purchased.

Improvements

Some improvements were effected to the amenities block and the water reticulation was extended in the caravan park. In addition some improvements were effected to the Assistant Ranger's Cottage, including exterior painting.

Playground Equipment

Four (4) more items of Children's Playground equipment were purchased and located near the north-east corner of the car park near the Ranger's cottage.

Tree Planting

Some Peppermints were planted near Sandy Beach, following earlier planting of street trees (Peppermints and Red Flowering Gums) on each side of the Coalmine Beach access road.

WALYUNGA NATIONAL PARK

Control and Vesting

Reservation and vesting of this area is not yet finalised. However control over this very popular area is being exercised pending finality. It is hoped to add to the park area in the near future. Mobile Ranger Mr. J. H. Rose has of necessity been permanently stationed in this park, due to its popularity since acquired, and the fact that the unauthorised removal of artifacts from the former Aborigine workshop area, taking of river-washed stones and soil require strict supervision, as also does shooting in the park.

Fire Control

Firebreaks were constructed during the year along the east, north and west boundaries of the park and existing firebreaks were graded.

Some controlled burning was carried out in conjunction with the local Bush Fire Brigade. It is anticipated supplying the Ranger with a trailer type firefighting unit before next summer.

Access Roads and Parking Areas

The access road to Walyunga Pool and Long Pool has been re-aligned and reconstructed, including gravelling and bitumensing. A small lookout car park has been constructed alongside this road between the park entrance and Walyunga Pool, and a car park has been established adjacent to Walyunga Pool.

Footbridge

A timber footbridge was constructed over a creek, thus improving access to the former Aborigine Workshop area.

Tree Planting

Native trees have been planted in an irregular pattern near the entrance to the western section of the park and some Bottle Brush have been planted around the new public toilet block.

Public Toilets

A new brick block of public toilets was erected near Walyunga Pool and the temporary toilets resited near Long Pool.

Water Supply

This area is not a favourable one in which to establish a suitable potable water supply. However water boring has yielded a supply for servicing the toilets, and rainwater tanks are being provided for drinking purposes. A large concrete water storage tank has been constructed on elevated ground for servicing the toilets.

Vehicles, Plant and Equipment

The Ranger's Landrover was fitted with an improved type winch during the year.

Picnic Tables and Barbecue Fireplaces

More of these have been supplied and sited near both Long and Walyunga Pools.

Noxious Weeds

Further spraying of *Watsonia* and *Cape Tulip* was carried out this year.

YALGORUP NATIONAL PARK

Control and General

This park was only vested in the Board in January, 1968 and once the question of an increase in size of the park has been settled, it is proposed taking action to plan and construct suitable firebreaks. In the meantime Mobile Ranger Mr. Walmsley's services will be utilised to check on alleged unauthorised shooting in this park.

OTHER RESERVES

ALBANY BORONIA RESERVE

This reserve is being maintained in its natural state and a survey for the presence of boronia was conducted at the appropriate time during the year; but with only moderate success, as it seems to have been fairly well picked out in past years before the Board gained control of the reserve.

ARALUEN-CANNING DAM RESERVE

This is a comparatively small narrow strip of territory lying between the Canning River and McNess Drive and extending from the vicinity of Araluen to the boundary of the Canning Dam water reserve. It is undeveloped, although the Board did arrange the erection of a log sign at the entrance to McNess Drive a few years ago.

EAST PERTH CEMETERY

A full-time gardener is employed on maintenance of the grounds of this disused cemetery, where the remains of many of the early pioneers of this State have been buried.

HAMELIN BAY RESERVE

Control

Mr. and Mrs. A. S. Wood lease a portion of this reserve for holiday resort purposes and Mr. Wood acts as an honorary ranger for the Board.

Public Change Rooms and Toilets

Electricity was connected and lights installed in this building during the year.

Boat Launching Ramp

Electric lighting of this ramp was completed in the year under review.

Car Parking Area

During the year the Board met the cost and the local Shire carried out sealing of the car park near the public facilities.

KEANE'S POINT RESERVE

A small reserve leased to the Royal Freshwater Bay Yacht Club. The grounds are well maintained by this Club, which is shouldering a responsibility of providing excellent facilities for the enjoyment of aquatic sports on the Swan River.

MATILDA BAY RESERVE

Control

Mr. D. R. Hill took over the duties of Caretaker-ranger on the 8th December, 1967, following the retirement of Mr. P. W. Daley many months earlier. This appointment was delayed pending the completion of renovations to the Caretaker's cottage. He controls a small staff of workmen.

Caretaker's Residence

Extensive repairs and renovations were carried out to this residence before it was occupied by the new Caretaker-ranger.

Restaurant-Tearoom and Kiosk

"The Pancake Grove" kiosk was built during the year by private enterprise on land leased for this purpose, and it was opened for business on the 15th December, 1967.

Similarly the "Matilda Restaurant" was built by private enterprise on leased land and this modern restaurant-tearoom was officially opened for business on the 3rd February, 1968.

Merry-go-round and Swinging Boats

These privately owned items of equipment were removed permanently from the reserve in December, 1967.

Re-alignment of Electricity Line to Pelican Point

This work became necessary through faults in the existing electricity line and the work was practically completed by the close of the financial year.

Change-rooms and Toilet Blocks

The exterior and interior of these three buildings were painted during the year.

Concrete and Timber Seats

Another six of these seats have been acquired for assembly during the wet days.

Aquatic Clubs

Sites are leased to the Royal Perth Yacht Club (Inc.), Mounts Bay Sailing Club (Inc.), Perth 14 ft. Dinghy Sailing Club (Inc.), 1st Pelican Point (Sea Scouts) Group and The Governors of Hale School.

Also the W.A. University Rowing Club occupies a boatshed on the foreshore of this picturesque reserve. The Clubs concerned are making a worthwhile contribution towards the provision of facilities for aquatic sports on the Swan River. The Sea Scouts Group is also playing its part in training of members.

NORNALUP PARK LANDS RESERVE

Control and General

This reserve adjoins the eastern boundary of the Walpole-Nornalup National Park on the north side of the South Coast Highway, and for practical purposes it is treated as part of the national park. Consequently it comes under the control of the Ranger in charge of the Walpole-Nornalup National Park.

NOWERGUP LAKE FAUNA RESERVE

Control and General

This reserve remains undeveloped and comes under the supervision of the Yanchep Park Superintendent.

OLD MILL RESERVE, SOUTH PERTH

A small reserve at the South Perth end of the Narrows Bridge, which is leased to Messrs. H. L. Brisbane and Wunderlich Ltd., who restored the old mill and cottage and established a small historical museum on the site a few years ago.

PENGUIN ISLAND RESERVE

Control

Mr. and Mrs. R. G. Carlberg lease portion of this reserve for holiday resort purposes and Mr. Carlberg acts as an honorary ranger for the Board. His principal duties involve protection of penguins and prohibition of dogs on the island. An assignment of lease is being negotiated.

Penguins

A few nesting shelters were provided for penguins near the settlements in 1965-1966 and it is hoped to provide some more in the near future. The island is signposted regarding the protection of Penguins.

Public Toilets

Maintained by the lessees on behalf of the Board.

Tree Planting

A further three dozen Norfolk Island Pines and one dozen Tamarix were planted on the island in May, 1968.

Signs

The island and adjacent mainland are signposted regarding the danger of crossing to and from the island via the sandbar, and also regarding prohibition on dogs and protection of Penguins.

WALPOLE FLORA RESERVE

Control and General

Adjoins the Walpole-Nornalup National Park on the north side of the South Coast Highway and for practical purposes it is treated as part of the National Park, thus coming under Ranger Mr. Gunson's control.

WALPOLE GOLF COURSE RESERVE

Excised from the Walpole-Nornalup National Park and at present held in its natural state, pending being leased for the purpose reserved.

WALPOLE YACHT CLUB SITE

Also excised from the Walpole - Nornalup National Park and leased to the Walpole Yacht Club.

YANCHEP PARK AND CAVES RESERVES

Control

Mr. J. Dale took over the duties of Superintendent on the 5th August, 1967, following the resignation of Mr. W. J. Burnett.

Mr. G. W. Press succeeded Mr. Dale as Assistant Superintendent. Both reside in the park and the Superintendent is in control of a staff of 20 persons, including office staff, cave guides, launch driver, workmen, gardeners, etc.

Amendment of Territory

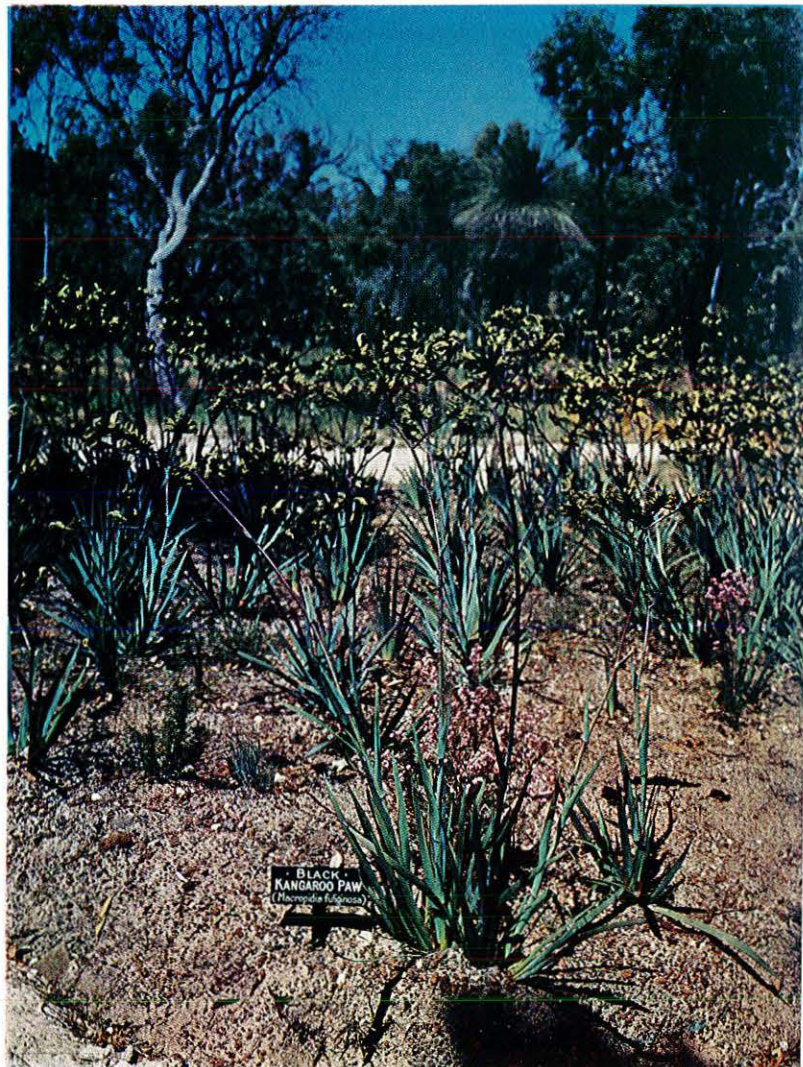
As mentioned in the main body of this report, this park was reduced in size by about 38 acres adjacent to the western boundary and part of Reserve A.9868, which was excised for "Forestry

Headquarters Site", in exchange for a larger area on the eastern side of the park which has yet to be added to the park.

Fire Control

Board workmen and plant were used to carry out the usual firebreak maintenance and controlled burning.

One bush fire only was reported and this occurred on the 7th March, 1968, as referred to in the main body of this report. Also a fire broke out in the boiler house at the rear of Yanchep Inn on the 10th January, 1968, which is also referred to in the main body of the report.



Black Kangaroo Paw
(*Macropidia fuliginosa*)

(Photo by courtesy of the Western Australian Tourist Development Authority)

A four-wheel drive fire truck of improved design is on order for helping in increasing the fire fighting efficiency, in regard to protection of park lands, leased properties, staff houses, and other buildings within this park.

In addition a 4 in. main and fire hydrant have been provided to service Yanchep Inn, and similarly piping is on hand to supply similar facilities to Gloucester Lodge and McNess Guest House.

Roads and Car Parks

Replanning of the southern entrance road to the park and the provision of additional parking space has been delayed pending the finalisation of a master plan for this park.

"Reduce Speed" signs and "Speed Limit 20 M.P.H." signs have been purchased and erected alongside the three approach roads to this park, in accordance with advice received from the Main Roads Department on their recommended location.

Master Plan of Yanchep Park

Such a plan is well advanced and should be completed and adopted in the near future.

Dredging of Loch McNess

This work has been delayed, but it is expected to be commenced shortly.

Native Flora

Some more wildflower beds have been bordered with limestone and paths treated with limestone base and gravel topping. Large numbers of wildflower plants have been either acquired or raised and planted out in the beds and also alongside the internal scenic drives.

Wildflower garden beds are name-plated and conducted wildflower walks are available to the public in the Springtime.

Further planting of suitable eucalypts has been carried out for koala feed purposes.

Native Fauna

Koalas, kangaroos, emus, parrots, budgerigars, finches, etc., are exhibited for the benefit of visitors.

Two koala births were recorded and two female koalas arrived from the Lone Pine Sanctuary, Brisbane; but these additions were offset by four deaths, including two aged koalas.

Noxious Weed Spraying

Some spraying of Cape Tulip and Lupins was undertaken during the year.

Caves

Crystal Cave, Yonderup Cave and Silver Stocking Cabaret Cave patronage has increased.

Launches and Rowing Boats

Launch trips on Loch McNess are very popular and there is an ever increasing demand for hire of rowing boats. Some boats were rebuilt and others repaired during the year, whilst arrangements are in hand to have more built. Both launches have now been fitted with permanent canopies.

Golf Course

Some improvements have been effected to a section of No. 3 fairway which is inclined to become water logged at times in winter. This attractive public course is increasing in popularity and its grassed fairways and greens have been well maintained.

Playing Fields

Of the three playing fields, the north oval is not quite fully grassed following the addition of further filling. A water supply has been established and a 4 in. asbestos water main laid underground down the middle of this oval for reticulation.

Tennis Courts

A waning interest in tennis has resulted in less patronage of the four bitumen surfaced courts.

Barbecue Fireplaces and Picnic Tables

More of these have been provided in picnic areas within the developed section of the park.

Yanchep Inn

Some retiling, renovations, electrical alterations and plumbing work have been carried out to these leased and licensed premises during the year. Also the car park and front gardens of the Inn were kerbed. The boiler room, laundry, and toilets at the rear of the Inn were modernised when rebuilt following a fire.

Gloucester Lodge

Renovations, including major improvements to the upstairs bathrooms and toilets and also the ironing room, were carried out to these leased premises.

Arrangements were made to rebuild the swimming pool and this work was in progress but incomplete at the end of the year under review.

The front lawn was re-kerbed.

McNess Guest House

These leased premises also received some attention by way of renovations.

Staff Houses

Major repairs were carried out to the house formerly occupied by the Superintendent and this

residence is now occupied by the Assistant Superintendent.

General maintenance of painting of some of the other staff houses received attention.

Vehicles Plant and Equipment

A Landrover was transferred to Yanchep Park from the Stirling Range National Park and another Landrover and a Bedford Motor Truck were transferred from the Department of Lands and Surveys. These are in the process of undergoing overhauls progressively.

Items purchased, included a chain saw, rotary hoe and a lawn edger. The Yanchep Park office was supplied with an adding machine.

By-laws

These are exhibited near the information centre.

Signs

Timber signs have been constructed at Yanchep Park and erected in front of the Information Centre, Yanchep Inn, McNess Guest House and Gloucester Lodge. Some other timber signs have also been erected in the park. In addition a map of Yanchep Park was made up out of marine plywood and positioned opposite the Information Centre.

General

Some confusion has arisen over the naming of this park and the Board was inadvertently informed that the name Yanchep National Park had been adopted, but further inquiries have revealed that finality has not yet been reached in this regard.

Yanchep Park facilities include Yanchep Inn, Gloucester Lodge and McNess Guest House; picnic and barbecue areas; golf course; tennis courts; playing fields; launch rides and boating on Loch McNess, besides cave inspections. In addition there are picturesque walks, koalas, kangaroos, emus and colourful birds on display and the wild-flower beds are a springtime feature; although there are usually some species flowering at most times during the year. The proceeds from the

wishing well in the Crystal Cave have all been paid over to approved worthy charitable organisations.

YANCHEP FLORA RESERVES

Control and General

These reserves are under the control of the Yanchep Park Superintendent and they are located a few miles north of Yanchep Park. They remain undeveloped and provide a source of eucalyptus leaves for koala feed.

YANCHEP BEACH RESERVE

Control and General

This reserve is vested in the Board for "camping" and comes under the control of the Yanchep Park Superintendent, pending control passing to the local Shire voluntarily in the near future.

Authority was given to erect a new kiosk on a site to be leased for that purpose. The old kiosk was demolished once the new one was opened for business just before Christmas, 1967.

Low level cisterns and new dry wells were provided at each of the three toilet blocks within this reserve.

SMALL PORTION OF RESERVE

A.1720 (KING'S PARK)

This small area, adjoining Mounts Bay Road is held by the Board and Mr. B. S. Hardwick holds a tenancy of the land, on which he operates a kiosk known as "Bernies".

THE KNOLL, GOOSEBERRY HILL

There has been considerable delay in the vesting of this area in the Board, which is not yet finalised. In the meantime the Main Roads Department has co-operated in the construction of a car park at the foot of The Knoll and a walking path to the summit, during 1965-66. Earlier a sealed one way road was constructed down the route of the old zig zag railway track.

ALEX. B. DAVIES, Government Printer,
Western Australia

54462/10/68-180