

New Kimberley loos don't flush away funds

MORE than \$30 000 was saved on the cost of a new amenities block at Mount Hart homestead.

Designed by West Kimberley District manager Allen Grosse, the wood and iron structure was made up in sections in the yard at Broome.

Three days

It was then transported to the park and assembled in only three days by Allen, CALM staff Henry Corpus and David Grosse, and homestead manager Taffy Abbotts.

The four worked until 10 pm each night and until 1 am one morning so it would be ready for a group of 30 people due to arrive at the homestead.

The result is an attractive building that provides an extra two

showers and toilets for visitors.

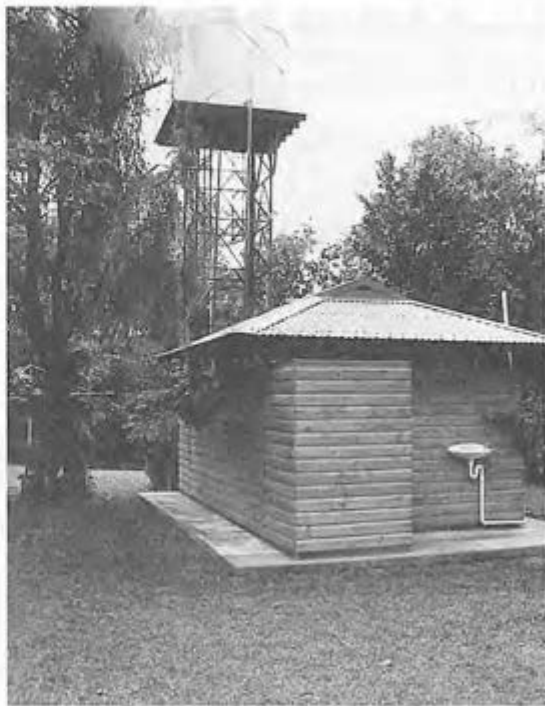
"However, it is not just a functional building. It has a sense of place and is aesthetically pleasing," Allen said.

"This is the sixth building of its kind to be put up in CALM-managed areas in the West Kimberley."

The others are at Silent Grove, also within the proposed King Leopold Range National Park, and Windjana Gorge National Park.

"The amenity block would have cost the department more than \$20 000 if it had been built by a contractor," Allen said.

"Instead, it cost only \$7000 - an achievement of which all the staff involved can be proud."



A new amenities block at Mt Hart homestead blends attractively into its surroundings.

Photo by Carolyn Thomson

