

CALM - for Jennie Cary it's where old friends meet

AFTER one year on long service leave (and leave without pay), in which she travelled, studied and worked in Africa, India, and the Maldives then lazed about in Perth, Jennie Cary has taken up a position as marine ecologist at CALM's Marine Conservation Branch in Fremantle.

Her arrival adds the last staff member to those who have already transferred to the Branch from the Department of Environmental Protection's Marine Impacts Branch (see May-June 1996 CALM NEWS).

Jenny said that it was like coming back to the 'fold'.

"I worked at the Forestry Department's Dwellingup Research Station as a research assistant on jarrah dieback under Syd Shea and Bryan Shearer back in the late 1970s and early 1980s," she said.

"They were the halcyon days—I was fresh out of uni, (along with seven other science graduates), not much responsibility (except for the honours thesis which was part of my work program), an excellent canoeing river on our doorstep and a great work environment.

"It's great to be back and see so many of the old Dwellingup faces still in CALM.

"The Marine Conservation Branch was doing a marine biological survey off the Fitzgerald Biosphere area recently and I bumped into Bryan Shearer and Jo Kinal doing dieback research in Hopetoun.

"I also came across Chris Portlock from Parks Policy and Tourism at the launch of the Swan Estuary Marine Park draft management plan, and occasionally I run into Syd Shea.

European cycle tour

"After I left the Forestry Department I travelled for two-and-a-half years in Europe. My boyfriend and I cycled for nine months in Europe and worked in France, Spain and England.

"I returned home in 1984 and in 1985 began work with the Department of Conservation and Environment (now the DEP) on a marine biological survey of the proposed Marmion Marine Park.

"Marine science had been my first love and I finally managed to fulfill that dream by working in

the marine branch of the Department of Conservation and Environment /Environmental Protection Authority/Department of Environment Protection for 14 years (we had a few name changes during that time).

"During those 14 years, I had a one-year secondment to work as Senator Jo Vallentine's environmental adviser and a three-month contract to work on Western Samoa's Environmental Management Strategy."

Jennie's experiences in Australia and overseas have given her the opportunity to acquire knowledge in a diversity of areas including:

Temperate and marine ecology of WA; design and implementation of biological surveys and monitoring programs; environmental impact assessment, marine community education programs; Federal and State political processes; lecturing (University of Namibia in Africa) and development of environmental management strategies.

Jennie is very enthusiastic about her new role with CALM which will see a shift in her work away from environmental protection (focused on man-



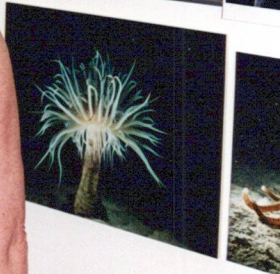
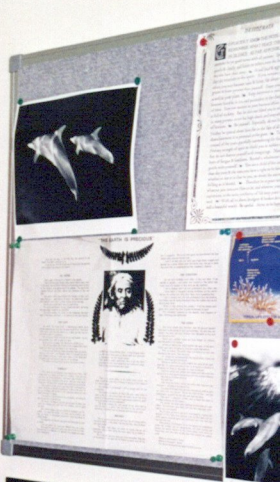
Jennie Cary: Photo by Verna Costello

agement of waste discharges in to the marine environment) and toward nature conservation, through the implementation of a marine reserve system in WA.

When she's not on, or under, the water Jennie enjoys practising and studying yoga, camping and walking especially in remote areas,

spending time with good friends talking, eating and drinking, and lying under a peppermint tree by the river with a good book.

Handwritten notes on a whiteboard, including the word "Whales" and a small drawing of a whale.



508 No 321/1



1 100-5 KODAK



2 GOLD 100-5



3 KODAK FILM



4 GOLD 100-5



5 100-5 KODAK



6 GOLD 100-5



7 100-5 KODAK



8 GOLD 100-5



9 100-5 KODAK



10 GOLD 100-5



11 100-5 KODAK



12 GOLD 100-5



13 100-5 KODAK



14 GOLD 100-5



15 100-5 KODAK



16 GOLD 100-5



17 100-5 KODAK



18 GOLD 100-5



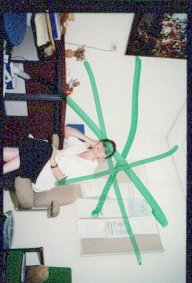
19 100-5 KODAK



20 GOLD 100-5



21 100-5 KODAK



22 GOLD 100-5



23 100-5 KODAK



24 GOLD 100-5



25 100-5 KODAK



26 GOLD 100-5



27 100-5 KODAK



28 GOLD 100-5



29 100-5 KODAK



30 GOLD 100-5



31 100-5 KODAK



32 GOLD 100-5



33 100-5 KODAK



34 GOLD 100-5



35 100-5 KODAK



36 GOLD 100-5