

by

T. H. Wood.

In the Kelmscott Division three totally different areas of planting are normally in progress at one time. These are located approximately 20 miles West of Jarrahdale at Peel Estate where *Pinus Pinaster* is planted, 5 miles North of Jarrahdale (Rehabilitation of areas mined for Bauxite) planted with both *Pinus Pinaster* and various species of *Eucalypts* and 20 miles South East of Jarrahdale on the Albany Highway adjacent to Mt. Cooke where *Pinus Pinaster* is planted.

The Pines are transported from Gnangara and the *Eucalypts* from Hamel. Due to the distance involved and the limited carrying capacity of the normal truck it has sometimes necessitated the use of two trucks each day to meet the demand for plants at all three areas.

To eliminate the use of two trucks, a double tiered canopy was designed and built at Jarrahdale. This then doubled the carrying capacity of one unit to approximately 75,000 pine plants per trip depending on the size of the plants. This then decreased the need to travel to either Gnangara or Hamel each day so that the one truck could travel to each centre on alternate days.

The canopy has been designed to fit a truck with a tray approximately 8' wide and 15' long with a finished inside height of 6'1" to allow the average person sufficient room to work at a comfortable height. Another requirement was that the second tier was designed to fold up out of the way allowing walking access to the full length of the truck body. The total length of the truck was divided into 4 sections lengthwise and 2 sections in width for convenient loading and unloading, raising and lowering of each tray by one man. The individual trays are held in the up position by straps mounted on the top support rail of the canopy.

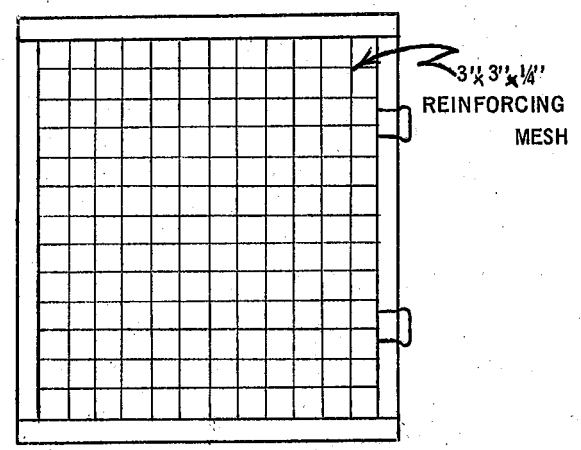
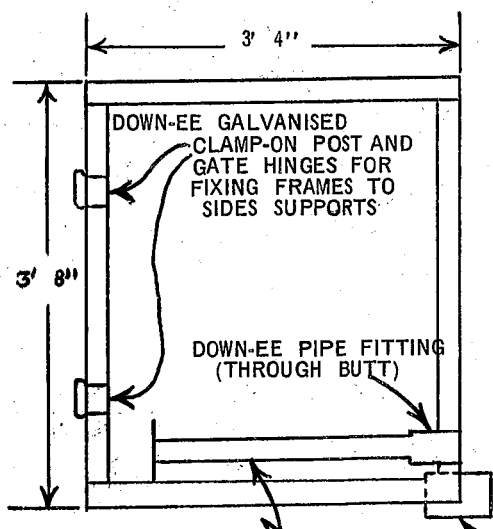
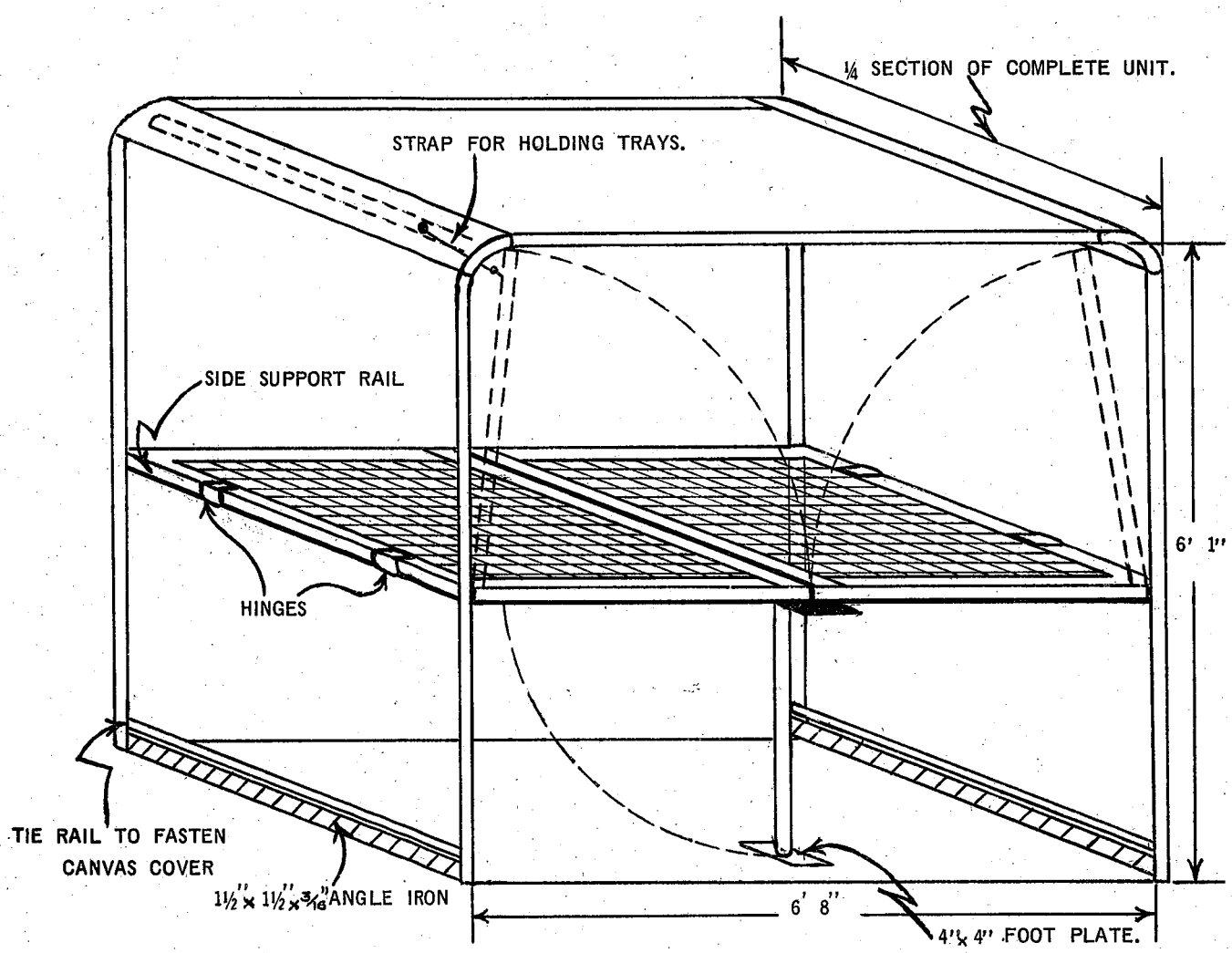
The frame of the canopy is 1" black steel piping shaped and welded to $1\frac{1}{2}'' \times 1\frac{1}{2}'' \times 3/16''$ angle iron which is in turn bolted to the truck floor. Each tray is covered with reinforcing mesh for strength and lightness and easy cleaning. Each tray is then individually fastened to the side support rail with post and gate hinges and supported in the middle of the double span by a support leg which also folds out of the way when the trays are folded upwards.

The Jarrahdale Canopy was successfully used during the 1969 planting season.

A similar unit has now been built in the Wanneroo Division for use at Gnangara during the 1970 planting season.

DOUBLE TIERED CANOPY

JARRAHDALE



SUPPORT LEG SHOWN IN FOLDED POSITION
 ALL PIPE USED IN THIS CONSTRUCTION IS
 1\"/>

STEEL PLATE
 SUPPORT FOR RIGHT HAND TRAY.

SCALE 1 1/2\"/>

T. H. WOOD.