

Wally wecollects...

"... yes, the Museum of W.A., 6 rats, O.K.?"
"No problem"

The expedition to Walpole set off with its various tasks being churned over in the members minds. Vegetation site types... lizards... birds... collect bush rats... how many was it, oh yes, seven.

And on the week went. Nothing out of the ordinary happened. Our great and bearded leader got bogged, our greater would-be leader got bogged thrice, and of course we caught the nine rats required.

To cut the story short, it was remembered that only eight rats were needed and so one was released. Our would-be leader, who taught us all, then demonstrated the art of transferring a rat from one cage to another and immediately lost the rat!

And thus was the Museum of W.A. delivered of its 6 bush rats or was it seven???

EDITOR: Rob Hopkins

DESIGNER: Yvonne Woods



THE WOYLIE RE

APRIL '87 VO

ECOLOGY

Grant Wardell-Johnson, Graeme Liddelow, Ian Wheeler,
Karen Maisey, Chris Vellios

Walpole-Nornalup

National Park Survey:

The recent wildfire gave the opportunity for examining the effects of fire on the communities located during the trapping and bird censusing of 1984/85. The post fire survey will continue for at least two years. The composition of the vegetation communities will be examined yearly in November for the same period. Trapping and bird censusing in the coastal section of the Park was carried out in January and April.

Twelve vegetation communities have been identified in the Park.

* * * * *

Perup Studies:

The fire effects study on herpetofauna has commenced and the before and after burn trapping completed.

A highly successful field day was held at the Perup to explain the management of the area to adjacent private property owners. Both Researchers and District Staff participated and the 40 or so farmers left with a renewed appreciation of the conservation value of the forests in the area.

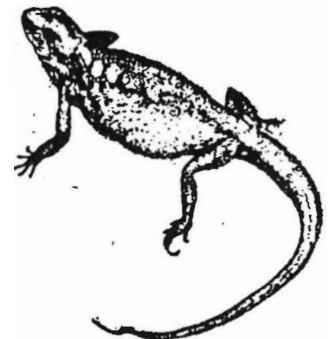
The Perup has also been the venue for the Forest Working Group on fauna management and a CALM/CSIRO Workshop on the relationship between scientific research and management.

* * * * *

Gray Block:

Mistnetting and census work on mardos has been carried out. Most birds captured (90%) were in the open area (logged) of the coup which was cut on a small group basis.

* * * * *



KARRI SILVICULTURE

Gary Inions, Tony Annels, Pete Skinner Pete Walsh

Thinning and Fertilization Experiments:
Quartz Road - the final draft of this paper is with the Principal Research Officer for policy approval.

The Warren 2 Thinning and Fertilization Trial - analysis of this experiment is complete. Results show that thinning produces immediate and significant increases in growth rates. The maximum volume increment is achieved if the stand is thinned to approximately 300 trees per hectare. Fertilization did effect growth but not until the second year.

* * * * *

Vegetation

Classification:

This section has been involved with the ecology section of the station in the classification and prediction of vegetation of the Walpole-Nornalup National Park. A. Annels collected the field data, G. Inions analysed it while P. Walsh computerized the resulting models into a user-friendly form for use by anyone with a microcomputer (using MS-DOS). The first draft of a paper for this project (For. Aust. J. Ecol.) is complete.

* * * * *

Prediction of Site

Potential at Year Zero of the Rotation:

The soil analysis section of this project is now complete and analysis of the full data set will start during the second week of May. This is the major project of this section and preliminary results indicate it should be a success. The model should be constructed by the end of June.

* * * * *

KARRI FIRE RESEARCH

Lachi' McCaw, John Neal, Bob Smith

Karri Regrowth:

40 ha of 17 year old Karri forest in Gray Block was prescribed burnt using Research findings on fuel quantity and moisture content, fire behaviour and the fire resistant qualities of young trees. The burn was supervised by Manjimup District with Researchers acting in a advisory capacity.

In Warren Block, 15 year old Karri trees were thinned using a tree harvester and forwarder. This block had been burnt 2 years previously and comparisons will be made between this and unburnt blocks as to fuel accumulation and prescribed burning, quality of stems available for retention and ease of machine operation.

* * * * *

Fire Behaviour in Heathlands:

Preliminary examination has been undertaken on several field trips including Fitzgerald N.P., Kalbarri and Watheroo N.P., Badgingarra, Mt. Leseur and Cataby.

* * * * *

Acanthiza inornata



FIRE RESEARCH

Neil Burrows, Bruce Ward, Alex Robinson

Firebase:

The computer based wildfire information storage and retrieval system is completed and data on wildfires in the Manjimup District goes back to 1951/52.

* * * * *

National Fire

Management Workshop:

The programmes and invitations have been sent, the date is 12-16 October, 1987.

* * * * *

Fire Effects Study

Areas:

Areas have been established at Perup (Jarrah), Strickland Road (Karri) and Sharpe Block (Flats). A study of wind ratios in flats has also been undertaken at Sharpe Block.

* * * * *

Pine Wildings:

Preparation for a programme of burns in Central Region is in progress.

* * * * *

Project Aquarius:

Continuing with the analysis of scans from the project.

* * * * *

BIOMETRICS AND COMPUTING

Yvonne Woods

Programming:

All animal trapping data has been reorganized into a dBase system for easier input and retrieval.

A similar system is also being developed for the Animal Sighting Records.

* * * * *

