

NATIONAL PARKS  
AUTHORITY  
WESTERN AUSTRALIA



# ANNUAL REPORT 1983 - 1984

"National Parks are established to preserve for all time, scenic beauty, wilderness, native wild-life, indigenous plant life and areas of scientific importance, and to provide for the appreciation and enjoyment of those things by the public in such a manner and by such means as will leave them unimpaired for the future.

The International Union for Conservation of Nature and Natural Resources defines a National Park as meaning an area established for the protection and conservation of ecosystems not materially altered by human exploitation and occupation, containing animal and plant species, geomorphological sites and habitats of special scientific, educational and recreational interest or a natural landscape of great beauty, which is under the control of the highest competent governmental authority and open to visits by the public."

FOREST SCIENCE LIBRARY, KENSINGTON  
Annual report (National Parks Authority of Western Australia)  
1983/84 902887-08



DEPARTMENT OF ENVIRONMENT AND CONSERVATION, WESTERN AUSTRALIA

Cover:  
WOLF CREEK CRATER  
NATIONAL PARK,  
KIMBERLEY REGION

**Hon. R. Davies, M.L.A.**  
**Minister for the Environment**

On behalf of the National Parks Authority of  
Western Australia, I herewith present the Report  
for the year 1983-1984.

**Prof. A. R. Main, C.B.E.**  
President,  
National Parks Authority of W.A.

**PROPOSED NINGALOO  
MARINE PARK  
NORTH WEST CAPE**



NOT TO BE REMOVED  
FROM LIBRARY

Page

**THE NATIONAL PARKS AUTHORITY**  
OBJECTIVES, AIMS AND CONCERNS  
THE AUTHORITY  
ADVISORY COMMITTEES

1

COMO RESOURCE CENTRE  
DEPARTMENT OF CONSERVATION  
& LAND MANAGEMENT  
WESTERN AUSTRALIA

6

**MANAGEMENT AND PROTECTION**

PLANNING  
MANAGEMENT  
RESEARCH  
EROSION CONTROL  
WEED AND VERMIN CONTROL  
THE DIBBLER  
BEEKEEPING  
FIRE MANAGEMENT  
VISITOR SAFETY  
RADIO NETWORK

**INFORMATION AND INTERPRETATION**

16

AWARENESS  
ENVIRONMENTAL EDUCATION  
MEDIA AND GENERAL LIAISON  
PUBLICATIONS  
DISPLAYS

**CO-OPERATION AND COMMITTEE INVOLVEMENT**

19

**VISITOR FACILITIES**

22

VISITOR DEMAND

**HISTORY OF PARKS**

25

HISTORY OF NATIONAL PARKS ADMINISTRATION  
IN WESTERN AUSTRALIA

**NATIONAL PARKS AND RESERVES**

29

STATISTICS  
NATIONAL PARKS (GENERAL)  
RESERVES (GENERAL)  
NATIONAL PARKS AND RESERVES VESTED IN OR  
UNDER THE AUTHORITY AS AT 30 JUNE, 1984.

**ADMINISTRATION**

41

GENERAL STATEMENT  
RANGER MOVEMENTS  
DIAGRAMMATIC REPRESENTATION OF STAFF DEPLOYMENT  
PROFESSIONAL, TECHNICAL AND ADMINISTRATION STAFF  
ORGANIZATION  
AUDIT REPORT  
FINANCE

**PERSONNEL**

62

STAFF ESTABLISHMENT  
HONORARY RANGERS  
TRAINING

**DRAWING OFFICE**

65

**LIBRARY**

66

**MAP**

67

## THE NATIONAL PARKS AUTHORITY

### OBJECTIVES, AIMS AND CONCERNS

The National Parks Authority through the commitment of its dedicated field staff toward the better management and presentation of national parks, has been able to achieve significant gains through 1983/84. The positive aspects of the Authority's work have been accomplished mainly through specific allocations to Southern Region national parks, from money provided under both the 'Wage Pause' and 'Community Employment Schemes'.

The Wage Pause programme in national parks which operated from bases at Esperance, Albany and on the Leeuwin-Naturaliste coast was particularly successful, in that many small but publicly needed improvements were undertaken. These included the design and construction of information pavilions, and the development of new roads, parking areas, picnic sites and board-walks.

In other aspects during the reporting year, the Authority has endeavoured vigorously to conserve and manage the State's 4.4 million ha of national parks and reserves, as the funds at the Authority's disposal would allow. In this regard, the National Parks Authority Act, 1976, requires that amongst other things, the land be managed, maintained and where necessary enhanced and improved. To fulfil these objectives, aspects of each objective had to be given a priority in the day to day operation of national parks in the field.

Unfortunately, in the absence of a substantial appropriation for capital improvements, the Authority's aim has been set at a number of targets, including the promotion of reasonable public access to areas of interest in national parks;

- ongoing maintenance of public facilities, roadworks, parking areas and picnic sites;
  - construction of walk-trails and the production of explanatory information material;
  - maintenance of the 5 500 km of fire breaks developed around and within most of the State's national parks;
  - upgrading of mainly light duty fire equipment and ensuring protection burns are undertaken;
- and,
- management of the environment, particularly in the rehabilitation of degraded areas, and in framing a course of action against exotic animals and noxious weeds.

This Report is the Authority's eighth since it came into operation in August 1976, and over that period of time reasonable progress had been made with experience gained, and through the expertise now developed within both the Authority and its limited staff.

In this context, we have seen a culmination of effort to improve both the conservation and preservation aspects of the Authority's work. This is seen through improvements made in the provision and management of regulated access to major areas of scenic attractions around Western Australia, and through implementation of an effective fire-fighting network albeit without modern heavy-duty 4-wheel drive units. However, action is already underway to rectify this situation in some measure, by procuring from the Forests Department some of their old surplus trucks.

The Authority setting out to establish a plan of effective management for the State's national parks has been severely constrained through the lack of funding and staffing resources. It was reported in last year's Annual Report that only 25 of the 65 national parks and reserves under the Authority's control were manned by Rangers, and this situation has been only marginally improved upon during 1983/84.

Through rationalisation of some services, principally the reduction of one staff member from Yanchep National Park, a ranger was established over the new year at Watheroo National Park west of Moora. His duties however, are still extensive including as well as Watheroo, responsibility for three other national parks - Tathra, Alexander Morrison and Stockyard Gully.

On a different aspect, in May this year, the Pemberton Caravan Park which was operated by two Authority rangers, was handed over to the Pemberton-Northcliffe Tourist Bureau. This move allowed the Authority to re-deploy the rangers to the previously unmanned D'Entrecasteaux National Park and to Torndirrup National Park at Albany, respectively.

Additionally, early in the reporting year, the Millstream and Chichester National Parks were amalgamated by increasing substantially (by 300,000 ha)\* the size of Millstream; the new area now being called the Millstream-Chichester National Park.

These two manoeuvres although improving management operations in the Southern Region, have effectively reduced the number of areas vested in the Authority (although the overall area under control has increased).

Notwithstanding these changes, the demands upon Authority staff remain at a high level through increased public use of national parks. Fortunately, some of the visitor's needs have been met by developments stemming from the 'Wage Pause' scheme, whilst other requirements; for example some urgently needed ablution facilities at two parks, have resulted from an increased CRF allocation for this purpose.

\* The exact area has not yet been determined.

The situation in regard to toilet facilities is only a little better than last year, in that now eleven parks (previously 10) have such necessities, with a further facility being currently built at William Bay National Park for the Authority by a local Shire using their own loan moneys.

The National Parks Authority is quite sensitive to three aspects of the public's expectation for national parks, particularly for adequate access to scenically attractive areas and for reasonable facilities, as well as the demand for participation in decisions which affect land conservation management generally. But progress in these areas to meet the community's demands, needs a heightened awareness by Government of the issues associated with the promotion of tourism on the one hand, and the requirement to allocate resources for conservation of the environment on the other.

In this regard, the NPA endeavoured to contribute fully as possible to the Government's recent review of land resources management in the South-West of the State. It was pointed-out to the Committee undertaking this task, that the Authority had developed a mission-orientated approach to its management of national parks, which allowed for cost-effective operations that were only constrained by persistently low funding and staff levels. Compared with other national park services in Australia, where a reasonable comparison can be made as to the respective areas under control and the numbers of staff concerned with management, the National Parks Authority has the smallest budget and the least staff.

This aspect was recognised in the final report of the task force, although it led them to suggest a need for a new amalgamated Department to overcome past deficiencies.

It remains nonetheless this Authority's view that the public is both able to identify, and to have an empathy with, a specialist national park service as an organisation capable and equipped to manage representative and superior elements of the natural environment for conservation and recreation.

It is yet to be demonstrated how this type of public service can be accomplished in a significantly enlarged agency the functions of which will be exceedingly diverse and little orientated per se to the public's expectation of national parks.

## THE AUTHORITY

The National Parks Authority came into operation on 1 August, 1976, with the proclamation of the National Parks Authority Act. Authority meetings were held monthly (except January) and membership as at 30 June, 1984 was as below:

- Prof. A.R.Main, Ph.D., F.A.A., C.B.E., President
- B.M.J. Hussey, B.Sc.(Hons), (Bot)., Cert. Ed.
- H.W. Sorensen, A.A.S.A., F.B.S., M.B.E.
- D.W.G. Treloar, M.Sc. (Agric.)
- \* A.J. Fewster  
The Acting Conservator of Forests, P.J.McNamara, M.A., F.A.I.M
- The Director of Fisheries & Wildlife, B.K.Bowen, B.Sc.
- The Surveyor General, J.F.Morgan, L.S., F.I.S.(Aust) M.A.I.C
- \*\* The Commissioner, W.A. Tourism Commission, L. Hitchen

each of whom serve ex officio on the Authority.

### Deputies:

- For the Acting Conservator of Forests, B. White;
- For the Director of Fisheries & Wildlife, Dr.I. Crook;
- For the Commissioner, W.A. Tourism Commission, E. Watling;
- For the Surveyor General, W.G. Henderson
- \* Mr. Young retired from the Authority in July 1983, and was replaced by Mr. A.J. Fewster.
- \*\* Mr. Semmens former Director of the Dept. of Tourism is now with America's Cup Defence & Special Projects. (Retired from NPA on 9th December, 1983).

## ADVISORY COMMITTEES

Following recommendations of the Conservation Through Reserves Committee, Environmental Protection Authority and the endorsement of State Cabinet, the following Advisory Committees were established:

Leeuwin-Naturaliste National Parks Advisory Committee -

National Parks Authority -

H.W. Sorensen - Chairman

H.R. Gorringe - Secretary

Shire of Augusta-Margaret River -

Councillor A.P. Hillier

Councillor E.G. Stephensen

Shire of Busselton -

Councillor C.A. Guthrie

Councillor A.V.C. Miles

Forests Department -

D. Spriggins, - Inspector, Bunbury

Department of Agriculture -

J.H.R. Riches - Adviser, Soil Conservation Service

W.A. Wildlife Authority -

R. Aitken - Member of the WA Wildlife Authority

South Coast Advisory Committee, D'Entrecasteaux National Park  
and Shannon River Basin -

Messrs. P. McNamara	Chairman
P. Omodei	Shire of Manjimup
E. Nidd	Shire of Manjimup
R. Brockman	Shire of Nannup
W. Hare	Conservation Council
C. Hutchinson	Dept. of Lands & Surveys
A. Walker	Forests Department
E. Watling	W.A. Tourist Commission
R. Hawley	Dept. of Agriculture
Dr. P. Christensen	Co-Chairman, Shannon Planning Group
Dr. J. Watson	Co-Chairman, Shannon Planning Group
H. Gorringe	Secretary
K. Wallace	Dept. Fisheries & Wildlife

Esperance National Parks Advisory Committee

National Parks Authority -  
B.K. Bowen - Chairman  
H.R. Gorringe - Secretary

Esperance Shire Council -  
Councillor D.F. March  
Councillor B.E. Stearne

Esperance Fishermen's Association -  
J. Cahill

Esperance Wildflower Society -  
P. Daniell

Department of Lands and Surveys  
R.K. Morland - District Surveyor

Department of Agriculture  
A. Kubicki - Agriculture Adviser



## MANAGEMENT AND PROTECTION

### PLANNING

A draft plan for the D'Entrecasteaux National Park was prepared in advance of the incorporation of additional areas of land into the Park, and for an interrelated strategy with the Shannon Basin.

Generally, planning has been orientated toward specific management needs, particularly park roads, parking areas and information bays. In this regard investigations, planning requirements and supervision of over \$300,000 of roadworks, was instituted during the year. All works involved either the upgrading of existing roads in parks or the installation of new roads to replace tracks traversing unsuitable terrain.

The design of facilities and the direction of work programmes for wage pause employment programmes were carried out in several south coastal parks.

The Planning Officer acted in the position of Regional Superintendent (Albany) in addition to normal duties whilst the Regional Superintendent was overseas.

#### Ningaloo Marine Park -

The Report of the Marine Park Working Group convened by the Authority was released by State Cabinet in November 1983 for public comment.

The Report published by the Authority represents a milestone in conservation and resource management in Western Australia. In particular, the concept put forward for integrating coastal and reef environments in the Marine Park as one management unit, has been hailed nationally as highly innovative.

Public meetings were arranged at Carnarvon and Exmouth to provide a forum for encouraging public comment on the report before its evaluation by the Environmental Protection Authority.

### MANAGEMENT

The successful management of the State's national parks is due to the continued careful deployment of staff, materials and limited funds. Throughout the State, wherever practical, ongoing programmes to control feral animals and exotic weeds have continued.

Stringent budget limitations and low staffing levels restricted most management activities to the maintenance of tourist facilities and the provision of services to tourists in the Northern Region of the State in 1983-84.

Nevertheless it is a credit to the Ranger staff that improvements to facilities were achieved in all manned National Parks.

Cape Range, Hamersley Range, Geikie Gorge and Millstream-Chichester National Parks each have one resident Ranger. There has, therefore, been a management presence in these four national parks throughout the year. In addition, nine caravan-based mobile Rangers were stationed in Northern Regional National Parks during the tourist season (July to October 1983 and April - June 1984).

The mobile Rangers extended the management presence to Windjana Gorge National Park and provided assistance to resident Rangers in their respective national parks, and allowed some servicing of Tunnel Creek National Park. Five other national parks remained unmanned. These are Hidden Valley, Drysdale River, Wolf Creek, Rudall River and Collier Range.

In the Southern Region of the State, improvements to visitor access through the upgrading of selected roads, tracks and footpaths were carried out during the year.

Ranger residences in the Stokes and Fitzgerald River National Parks have had roof replacements to increase water run-off for domestic storage. Unfortunately both these residences are located in areas of poor groundwater supply, and there was a real need to improve storage of water for domestic use.

Dune restoration works continued at Stokes National Park whilst various rehabilitation programmes are ongoing in Torndirrup and Cape Le Grand National Parks.

The management of caves in the Margaret River District has again proven important and the Acting Caves Ranger has undertaken visits to many sites, especially in the Boranup area. The appointment of a fulltime Caves Ranger remains a top priority in this area.

## RESEARCH

Management and planning are not possible without prior knowledge of the resources one is trying to manage and an understanding of the biology of these resources so that management will be favourable. To this end, studies have been initiated by the National Parks Authority using students from tertiary institutions to gather resource data. During the past year, students have worked on projects including mapping of fire patterns in parks of the South-West and Esperance area; studies on the distribution of weed species in Yalgorup National Park; an aerial photographic survey of mulga (*Acacia aneura*) and fire in Hamersley Range and the adjacent pastoral country; and an assessment of fuels resulting in the preparation of fuel loading maps for Walpole-Nornalup National Park.

Research by other organisations has also been promoted through a campaign to advertise national parks as worthy places to carry out environmental studies. In consequence, many projects have been started and are now complete or ongoing.

NUMBER OF RESEARCH PERMITS ISSUED EACH  
CALENDAR YEAR SINCE 1974

YEAR	FLORA	FAUNA	GEOLOGICAL	ANTHRO- POLOGICAL
1974	12	10	-	-
1975	34	1	-	-
1976	23	8	1	-
1977	27	19	-	-
1978	22	10	1	-
1979	13	26	1	-
1980	56	34	11	6
1981	31	21	4	-
1982	49	32	7	-
1983	70	32	9	2
1984*	17	21	4	1

\* Six months to end June

As a result of this campaign, the number of projects compared with the last reporting year has been maintained despite a reduction in funds available to tertiary institutions.

Studies for which research permits were issued included many for taxonomic investigations and some ecological projects such as pollination of orchids, lichen biology, reproduction in Banksia, the biology of soil microfauna and the ecology of lampreys. With regard to research in earth science projects, studies have been undertaken into Eocene sedimentation and on the geology of the Albany-Frazer mobile belt.

One of the main elements of issuing a permit, is to ensure that the project is both valuable to science and to the Authority.

No comprehensive research project was undertaken within a national park in the Northern Region this year. However, a number of scientists from other agencies made collections or observations as part of their research programmes. Additionally, research was carried out by consultants preparing Environmental Review and Management Programmes for proposed developments, particularly for a major tourist complex suggested for the Hamersley Range National Park, and for the new National Highway between Newman and White Springs.

The National Parks Authority is represented on the inter-departmental committees charged with monitoring and management of those environmental components of the Millstream area that are dependent on aquifer derived water. In this regard, Authority officers have undertaken regular monitoring work and have had a direct input to the drafting of a more comprehensive monitoring and management programme.

The Regional Superintendent, Northern Region has taken an active part in the establishment of the recently opened Pilbara Regional Herbarium which is housed at Karratha College. It is expected that this facility will be of enormous benefit to research into the flora of national parks in the Pilbara.

A grant under the State's Assistance Scheme from the Australian National Parks and Wildlife Service allowed a consultant to undertake visitor surveys of selected parks throughout the State during the first part of 1984.

The aim of the project which was supervised by the Planning Officer, was to provide data on levels of visitor use, recreation activities and expectations for facilities as a precursor to the preparation of management documents for various parks.

A joint project supervised by the Planning Officer and the Ecologist saw the employment of two people under the C.E.P. scheme to research social and environmental data for the northern sandplain parks, and to prepare management guidelines. This work was completed at the end of the reporting period.

#### EROSION CONTROL

The majority of work on erosion control over the past twelve months has been in coastal parks in the South-West and Esperance areas. The provision of staff with some modest funds from the Wage Pause Employment Programme, has allowed the restoration and repair of numerous coastal erosion problems, as well as providing a number of high quality and safe visitor access-ways to be constructed.

In this regard, a total of 33 projects were carried out in the Leeuwin-Naturaliste National Park. In other reserves the following number of developments were undertaken:

Cape Le Grand	12
Cape Arid	11
Stokes	12
Torndirrup	17
Stirling Range	8
Porongurup	12
William Bay	10

The work included building of stairs, construction of paths and boardwalks and the development of new camp sites.

In terms of achievement, the Wage Pause Programme was an unqualified success, although the additional load which was placed on an already over-worked staff, meant that some pre-planning was inadequate and other urgent jobs were put aside. In particular, the voluntary work force previously used in parks was temporarily dismissed because ranger staff could not supervise both situations whilst attending to their own duties.

In the Northern Region action to prevent erosion in susceptible areas and to rehabilitate eroding areas has been taken wherever it has been necessary and feasible. Measures have included rationalisation, reconstruction and relocation of facilities, roads and walking trails.

The most significant erosion control and rehabilitation project has been alongside Deep Reach at Millstream where the southern bank was extensively denuded of vegetation. Access tracks and facilities areas have been fenced and planted with native species of trees. The assistance of the Forests Department in this project is acknowledged. The destocking of Millstream Station by the Public Works Department has also been of benefit both at Deep Reach and generally within the national park.

#### WEED AND VERMIN CONTROL

Weed and vermin control has been less intensive this year, partly due to the success in eradication of some pest species earlier, and partly because manpower available for these projects was limited this year.

Arum Lily, Blackberry, Double-gee, Apple of Sodom and Berkhya thistle control have been at the forefront, together with rabbit, cat, goat and donkey control.

A concentrated campaign to combat foxes has been started in the Fitzgerald River National Park following the discovery of a rare mammal, the Dibbler. The campaign concentrates on the park margins where foxes from adjacent farmland travel into the park.

The control of date palms at Millstream continues to be a long term problem. Because of the need for other management action in the additional land acquired in June 1983, the work on eradication of date palms was minimal this year. However, some of these trees were removed from the Millstream spring area and seedlings of native species were planted in the spaces created.

In other ways, further outbreaks of Khaki weed were located and eradicated or contained in both Millstream-Chichester, and Hamersley Range National Parks. Moreover, at Windjana Gorge National Park the new camping area has remained relatively free of the weed and at Geikie Gorge outbreaks within the camping area have been eradicated.

In both areas, the potential for serious re-infestation remains high. This troublesome weed is readily spread by seeds adhering to camping equipment and clothing, and regrettably, it is now ubiquitous in tourist frequented areas throughout the Kimberley Region.

In Cape Range National Park the Agriculture Protection Board again baited foxes along the coastline during the turtle breeding season. In the same national park, 246 feral goats were taken by muster or shooting.

Goat numbers within the park have been substantially reduced during the past few years. However, recolonisation from adjacent land makes total eradication impossible at present.

In the southern and central parts of the Hamersley Range National Park, over 400 feral horses and 250 feral donkeys were shot by a professional shooter.

#### THE DIBBLER

This small mammal Parantechinus apicalis or Dibbler is a gazetted rare species. It was last recorded in 1976, and before that in 1967 which was the first confirmed sighting since 1884.

The Dibbler was refound in April 1984 by the Ranger in charge of Fitzgerald River National Park, Mr. George Duxbury, who discovered a recent carcass on a track in the park. Later forensic examination showed it had fallen prey to a fox.

In consequence, a fox eradication campaign was commenced adjacent to farmland in order to reduce the numbers of these predators. Additionally, studies of the habitat where the Dibbler was collected were commenced, and following advice that a fox was unlikely to have transported the body more than two or three kilometres, surrounding habitats were also examined.

This, together with studies of known Dibbler habitats, was pieced together in the field and the conclusion has been reached that the species may be dependent on very old vegetation which has not experienced fire for a considerable time. This has led to a temporary cessation of burning programmes within the park and a revision of fire management has commenced. The first step in this review is a detailed flora and fauna study of portion of the park with a view to establishing guidelines on the effect of fire on the habitat. The study is scheduled to commence in August 1984.

#### BEEKEEPING

The loss of nearly 80% of the Beekeepers Reserve near Eneabba to fire in the 1983/84 summer period has placed an enormous strain on apiarists, having effectively reduced by almost 40% productive bushland. Consequently considerable pressure has been placed on the flora-rich areas in some of the heath land national parks north of Perth which contribute a substantial amount to the apiarist's livelihood, including honey, pollen, bees wax and queen bees.

The Authority has done all in its power to facilitate use of registered apiary sites within the parks, but the rush has led to some unfortunate instances such as illegal use of sites and damage to bushland.

The standing policy that Biosphere Reserves and those with very high public visitation, eg. Yanchep, are excluded from beekeepers is still maintained, but indications are that the available sites elsewhere are proving adequate.

#### FIRE MANAGEMENT

The 1983/84 fiscal year saw no increases over the previous two years in the allocation of funds for fire management, severely restricting any expansion or new initiatives. As a result the pruning of some fireline construction and maintenance programmes was necessary to allow for the essential upgrading in other areas of fire management.

During the season, Ranger staff carried out 43 control burns within national parks, covering approximately 4,500 ha. In most cases the burning was undertaken with the assistance of neighbours and local bush fire brigades, a minority being done under contract by the Forests Department. The maintenance of low fuel levels within the buffer systems established within and around the perimeters of national parks, affords protection to both the reserves and adjoining properties.

A reduction in the usually large number of lightning strikes occurring within the Northern Region Parks during the reporting year, resulted in a corresponding reduction in the number and area of reported wildfires. On the other hand, the most significant wildfire that occurred probably through lightning, was in the south-east at Cape Le Grand National Park, where one third (approximately 10,000 ha) of the total park area was engulfed.

The Authority acknowledges the valuable assistance given with fire fighting operations within National Parks, by local brigades and neighbours. The National Parks Authority also acknowledges the assistance received throughout the year from a number of Government Departments and instrumentalities, with a special mention being made of the Forests Department and the Bush Fires Board.

Ranger staff reported that they assisted other firefighters at twenty wildfires and control burns outside national parks, entailing the involvement of some 36 Authority employees.

The programme, instigated last year, to equip progressively all vehicles involved in fire fighting activities with radios compatible with the State VHF Bush Fire network, was continued this year through the purchase and installation of an additional five sets. Two were installed in vehicles at Yanchep, two at Nambung and one in the Ranger's vehicle stationed at Watheroo National Park.

REPORTED WILDFIRES ON EXISTING NATIONAL PARKS AUTHORITY LAND FOR 1983/84 FIRE SEASON

PARK	CAUSE	NO. OF FIRES	APPROX. AREA BURNT (HA)
Avon Valley	Escape from control burn on Railway	1	15
Cape Arid	Lightning strike	1	50
Cape Le Grand	2 lightning strikes, 3 deliberate	5	10 010
D'Entrecasteaux	Escape from rubbish burn on private property	1	64
John Forrest	Unknown, 2 deliberate	3	5
Kalamunda	Unknown	1	1
Kalbarri	Escape from private property clearing burn	1	2 500
Leeuwin Naturaliste	3 unknown, escape from rubbish tip, deliberate	5	765
Millstream	Escape PWD control burn, unknown, lightning strike, deliberate.	4	1 122
Nambung	Deliberate	1	50
Neerabup	Deliberate, unknown	2	241
Scott River	Deliberate, Escape from control burn on private property	2	375
Serpentine	Escape from private property	1	282
Stokes	Escape from camp fire	1	600
Stockyard Gully	Lightning strike	1	800
Walpole-Nornalup	2 deliberate, escape from Shire control burn, unknown	4	508
Yanchep	Escape from private property burn, deliberate, (burning of stolen car)	2	300
		36	17 688

Of the above 36 fire occurrences, three were escapes from control burning on adjoining Government or Shire controlled land, five lightning strikes, thirteen deliberately lit, five escape from control burning on private property, one escape from a Shire rubbish tip, one escape from a camp fire and eight whose origin were unknown.



The building of two new slip-on heavy duty fire units, to replace aged and obsolete units at Pemberton and the Leeuwin-Naturaliste National Parks was commenced. The units are based on a design developed by the Forests Department, incorporating a 2728 litre tank with a 6-cylinder engine coupled to a 50mm Stalker pump. They are to be completed for the 1984/85 fire season.

Four new light-duty, slip-on units, were purchased and placed at Cape Le Grand, John Forrest and Nambung National Parks, replacing old units. A new unit was also supplied to the recently established Watheroo National Park. Other equipment purchased included a 4 x 4 truck for the heavy duty unit at Cape Le Grand, and a 9,000 litre overhead storage facility was installed in the Hamersley Range National Park providing a "quick fill" point for fire fighting units.

The National Parks Authority in 1981, after discussions with the Manjimup Shire and the Forests Department, and in consequence of the Ash Wednesday fires in the Eastern States, reviewed the situation of large fuel build-up within the Walpole-Nornalup National Park. Subsequently a redrafting of the existing plan, which was framed in 1977, was carried out and released for public comment for a period of three months.

A total of 86 submissions were received, prompting the Authority to commence preparing a provisional plan, which will include some of the recommendations contained in the submissions. The provisional plan is to be implemented for a period of three years over which time a substantial data base will be collected. This will allow a more accurate assessment of fire effects on the ecology to be made and lead to the development of a more definitive plan.

Apart from attending a number of bush fire seminars and meetings, the Fire Management Officer spent a day showing members of the Standing Committee on the Environmental-Impact of Bushfires Sub-Committee, fire management procedures in the Pemberton area. In addition to preparing and forwarding a formal submission, three days were spent in the field with members of the Legislative Council Select Committee on Bush Fires in Western Australia.

Many rangers being officers and members of bush fire brigades attended various bush fire advisory and bush fire brigade meetings within their districts.

#### VISITOR SAFETY

During 1983/84, the National Parks Authority continued to implement when and where possible its duty of care to all national park visitors.

Rangers in most areas were required to render assistance following minor accidents and, less frequently, to organise searches for people overdue from bush walks.

Wherever it was necessary, assistance was provided by Police officers, civil emergency or other relevant agencies. Liaison with such organisations is good and, where possible, rangers have been involved in civil emergency groups. The Ranger in charge - Hamersley Range National Park was the co-ordinator of the Wittenoom Volunteer State Emergency Service. That group has maintained its very high capability in cliff rescue work.

A number of signs cautioning tourists in potentially dangerous areas have been erected and, particularly in Hamersley Range National Park, facilities such as concrete steps have been constructed to improve safe visitor access to gorges.

#### RADIO NETWORK

Active maintenance continued to the radio system installed in all ranger vehicles throughout the State. A new set (SSB unit) was installed in a new vehicle allocated to the Watheroo National Park during the year.

A programme, instigated last year, to progressively equip all vehicles involved in fire fighting activities with the ability to communicate through the State VHF Bush Fire network was continued, with the purchase and installation of an additional five sets. Two were installed in vehicles at Yanchep, two at Nambung and one in the ranger's vehicle stationed at Watheroo National Park.

## INFORMATION AND INTERPRETATION

Through its information service, the National Parks Authority promotes public awareness, interest and appreciation of the State's national parks and reserves, and of the environment and wildlife generally.

### AWARENESS

All members of the staff spent time during the year advising other Government Departments, institutions and business houses of the policies, regulations and management requirements pertaining to the National Parks Authority of Western Australia.

Social and student groups were again provided with verbal and printed information which enabled correct usage, interpretation of areas visited and studies in national parks and conveyed the very necessary message of safety in natural areas.

Specialist groups from the Army, Navy, Education Department, S.E.S., Orienteering Association, Scouting and other clubs, requested permission to perform various activities within national parks during the year. Approvals and instructions indicating management criteria were issued to most applicants with some group redeployment because of dangerous terrain.

An increase in applications was again noted during the year for approval to film documentaries within national parks. All programmes were approved and successfully supervised. Awareness programmes and various permit requirements are always indicated to known users of national parks.

The Australian Ranger Bulletin continued to be a successful vehicle for awareness of management procedures and techniques, and National Parks Authority staff continued to contribute.

Throughout the Northern Region public understanding of the values and objectives of national parks is developing. This is particularly true of Local Authorities and the Tourist Industry. These bodies realise the importance of appropriate management to the tourist industry and to regional development.

A measure of general public appreciation can be gained from Millstream-Chichester National Park. It had been anticipated that there would be considerable objection from some quarters of the community to the enforcement of National Parks Regulations and standards of behaviour on those portions of the Millstream area that were acquired in June 1983. In practice there has been a high level of co-operation from the public and the rangers have received many compliments about the services and facilities now provided.

## ENVIRONMENTAL EDUCATION

Requests for illustrated talks and lectures from private bodies, schools and other institutions continued this year with staff meeting demands where possible inside and outside of working hours.

Rangers continued to give pre-arranged talks and tours, of their parks when they were able to be fitted in with regular duties.

"Work Experience" students from various High Schools were placed in national parks throughout the year and it was most advantageous for all involved. The valuable assistance given to rangers was reciprocated to student workers by enhancing their environmental education and general understanding of national park management procedures. Students were also placed in head office during the year and received valuable administrative experience.

Nature trails have been designed for Yanchep and Badgingarra National Parks and both will be opened in the 1984/85 financial year.

## MEDIA AND GENERAL LIAISON

Head Office staff, Regional Superintendents and Rangers continued to maintain close liaison with local authorities, tour operators, Government departments and all other bodies involved in the day to day management of national parks.

Local media have been kept informed of developments, activities and projects involved in national parks and the management thereof, through direct contact with the Minister for the Environment's office, Regional Superintendents or National Parks Authority administration at head office.

## PUBLICATIONS

Four major and six minor new publications were added to the existing list of 57 current publications during the year. Unfortunately, another colour brochure has had to be phased out of production due to budget constraints, but has been replaced by a cheaper monotone document.

The WA Tourism Commission and allied agency requests continue to exploit stocks of national park brochures. The continuing standard budget for publicity and publications (because of the increase in demand for printed matter and the declining value of the budget money), is starting to cater for reprints only. Some six proposed new items were left unpublished when the funds were expended late in 1983. Extra funds were allocated later in the year and used for reprints.

New releases were:

Ningaloo Marine Park  
NPA Report No. 1

Hamersley Range National Park  
A Fauna Survey NPA Bulletin No. 1

Serpentine National Park  
History

Kimberley National Parks  
Geology

John Forrest National Park  
Granite Rock Plant Succession

Yanchep National Park  
Rare Cave Crustacea

Stokes National Park  
Some Fauna Observations

Cape Arid National Park  
Birdlist

Hamersley Range National Park  
Birdlist

Geikie Gorge National Park  
Birdlist.

Currently in print:

Reprint of Kalbarri National Park brochure;

John Forrest National Park brochure,

Stirling Range and Porongurup National  
Parks brochure;

National Parks Authority Management Policies.

#### DISPLAYS

Display boards featuring photographs of the Devonian Reef National Parks of the Kimberley, and appropriate text were mounted during the year.

Requests for the displays were met where possible, the venues being the Naturalists' Club, Wildlife Show, Kings Park Native Plant and Wildflower exhibition, Royal Agriculture Showground Caravan, Camping Tourism and Homes Show Exhibition, and the Canning Basin Petroleum Symposium at the Sheraton Hotel.

## CO-OPERATION AND COMMITTEE INVOLVEMENT

As in the past years, a National Parks Authority ranger is seconded to Garden Island, where he works to ensure the conservation and maintenance of the natural areas of the Island. His work is under the control of the Commanding Officer, HMAS Stirling, who is advised by the Garden Island Environmental Advisory Committee.

The Director of National Parks is the State's representative on that Committee, which met four times during the year.

The co-operation between the Navy and the National Parks Authority has ensured a high standard of environmental management of Garden Island, and has allowed reasonable public access by boat or tour bus during daylight hours. Moreover, during 1983/84, a new picnic facility has been developed in the north-western sector of the Island, to complement the already well used area at historic Clifty Head.

The new site-works which include a gas barbeque and demountable toilet will cater for the requirements of boat visitors who frequent the northern part of the Island, particularly during the summer.

The Director is also the Authority's representative on the Standing Committee of the Council of Nature Conservation Ministers. This Committee met twice over the reporting period, and also at the end of the financial year in association with the full Ministerial Council.

Matters discussed by Standing Committee range from wildlife and national park management issues, through staff training programmes, and international aspects including conventions to which Australia is a party, eg. those that regulate trade in native animals and animal products, and protection of habitat.

These forums allow national guidelines to be set, and a uniformity of approach adopted for national parks and nature reserve management.

The Authority's two Regional Superintendents - Dr. John Watson at Albany, and Dr. Tony Start at Karratha, continue to liaise with local authorities, tourist bureaux, Government Departments and park users generally, in the day to day operation and management of the parks in their respective regions. In this regard, Dr. Watson was made a Co-Chairman of the Shannon Forest - D'Entrecasteaux National Park Working Group, jointly with Dr. Per Christensen of the Forests Department, Manjimup, when the Government decided to reserve the Shannon Forest from further wood production and to move toward managing it as if it were a national park.

The Working Group has the task of preparing management guidelines for both the Shannon area and the adjoining D'Entrecasteaux National Park (which is shortly to be enlarged).

In addition to these interactions, other activities include:

- a representative of the Authority maintaining liaison with the Royal Western Australian Historical Society, in the compilation of an historic register for the East Perth Cemetery, as well as initiatives toward publishing these data as a Bi-Centennial celebration project;
- the Director being appointed Chairman of the Geological Society of Australia - WA Division Convenor on Geological Monuments - many of which occur in the State's national park system, for the purpose of registering such geological features and ensuring their long-term protection;
- continued co-operation between rangers, the Bush Fires Board, local authorities, and voluntary bush fires brigades for the purpose of protecting national parks and adjoining land from the threat of wildfire.

Throughout the last six months of this financial year, most senior head office staff of the National Parks Authority have been required to commit a good deal of their weekly time, involved in researching and reporting on their individual departmental functions toward helping to implement the proposed Department of Conservation and Land Management.

The Planning Officer has attended numerous committees and meetings at many areas throughout the whole State where local government and advisory committees have a current interest in any national park. Committee membership include:

- . Cave Management Working Group,
- . Albany Regional Development Committee (Advisor)
- . Acting Co-Chairman of Shannon-D'Entrecasteaux Working Group;
- . Leeuwin-Naturaliste Liaison Group;
- . Marine Park Working Group.

In all these cases and others as well, communications have been at a co-operative and responsive level. The National Parks Authority takes this opportunity to extend its grateful thanks to the many agencies which have assisted in ensuring the better management and presentation of the State's national parks.

In September 1983, a two-day park management seminar was organised by the Regional Superintendent in association with the annual regional fire fighting competition. The seminar was attended by rangers from throughout the Southern Region and lectures were presented by head office staff and by invited specialist speakers. Field exercises dealing with planning issues were held at Torndirrup National Park.

Rangers and the Regional Superintendent have continued to present illustrated talks on national parks and related topics to various organisations during the year.



## VISITOR FACILITIES

Rangers in all national parks have strived with limited resources to improve visitor facilities. Achievements have included:

- Geikie Gorge National Park - considerable improvements in the layout of the camping area, the facilities for boarding tour boats and barbeque areas;
- Windjana Gorge National Park - continued development of the camping area and facilities,
- Cape Range National Park - replacement of old toilets, the construction of a new camping area on the abandoned drill pad constructed for the drilling of Yardie East No. 2 oil well, and upgrading of signs and other facilities areas. Credit is due to the Shire of Exmouth for assistance with earthworks undertaken during this upgrading work.
- Hamersley Range National Park - continued improvements to camping and picnic areas, access into gorges, and interpretive signboarding. A public water supply will be operative very shortly.
- Millstream-Chichester National Park - barbeques, rubbish bins and toilets have been installed at Deep Reach. Rubbish accumulated over years at Deep Reach and around the homestead area has been cleared and work has commenced on the construction of walking trails.

Tourist Road Grant Funds were used to complete a new scenic road and to relocate access and parking at the homestead area. Extensive planting of indigenous tree species to rehabilitate eroded areas at Deep Reach was undertaken with the assistance of the Forests Department. The Public Works Department has provided invaluable support and assistance in a wide variety of situations.

- Walpole-Nornalup National Park - a new footbridge has been constructed across the Deep River for bushwalking access to the Nuyts Wilderness. Also steps have been constructed for visitors to Circular Pool on the Frankland River.
- Beedelup National Park - near Pemberton, the main carpark at Beedelup Falls has been redesigned and improvements have been made to the footpath around the falls.
- Warren National Park - The Bibbulman trail has been relocated along the banks of the Warren River.

- Leeuwin-Naturaliste National Park - in the Margaret River district several beach access projects have occurred including works at Skippy Rock, Hamelin Bay, Cowaramup and Cape Naturaliste.
- Cape Arid, Cape Le Grand and Stokes National Parks - improvements to visitor access have continued through the upgrading of selected roads, tracks and footpaths. At Cape Le Grand a long overdue flushing toilet facility has been provided at Lucky Bay.
- Fitzgerald River National Park - extensive roadworks have been undertaken to improve vehicle access to areas at Mylies Beach and West Beach and urgently required maintenance work has been carried out along Hamersley Drive. Several new beach walkways have also been installed.
- Stirling Range National Park - general improvements have been made at a number of picnic sites and lookout points. Footpath reconstruction has occurred at Monurup Peak and on the lower section of the Bluff Knoll path. Rehabilitation of the disused section of Toolbrunup Road has continued. A small registration post for rock climbers and bushwalkers has been erected near the Bluff Knoll ranger's residence.
- Porongurup National Park - the 'Tree in the Rock' picnic area has been upgraded with improvements to the carpark and to visitor information. Additionally, the footpath up Devils Slide has been rerouted to avoid steep mossy slopes.
- Torndirrup National Park - new beach access projects have been completed at Misery Beach and Cable Beach, a popular fishing spot. The path over Isthmus Hill has been stabilised using duck boarding. A new carpark has been installed for visitors to Peak Head.
- William Bay National park - a new toilet block has been erected at Green Pools carpark this being a joint project with the Shire of Denmark. This facility is long overdue with visitation in excess of 1,000 people per day at this locality in summer. A new beach walkway and carpark has been provided at Mad Fish Bay.

#### VISITOR DEMAND

Visitor usage of national parks is best illustrated in the Northern Region where most tourists camp in the respective parks or in other ways, can be logged by park rangers.

The tourist season in the north of the State occurs during the cooler months from about April to October.

The relatively stable tourist numbers for the early part of the 1983 season (as compared with 1982 visitor numbers) recorded in the last Annual Report persisted into the latter part of the 1983 season. However, data for the early part of the 1983 season shows a substantial increase of 20% to 40% in tourist numbers as compared with the same period in 1983.

The following tables illustrate these trends:

Tourists Taking the Authority Boat Tours  
In Geikie Gorge National Park -

July - October 1982	10,789 people
July - October 1983	11,346 people - increase 5%
May - June 1983	3,902 people
May - June 1984	4,809 people - increase 23%

Tourist Camp/Nights in Hamersley  
Range National Park

July - October 1982	1,541 camps
July - October 1983	1,606 camps - increase 4%
May - June 1983	543 camps
May - June 1984	776 camps - increase 43%

Note:

- i. Data excluded coaches and day visitors.
- ii. Approximately three people per camp.

Whilst it is always difficult to determine long term trends from limited data, the rate of increase in tourist numbers in early 1984 is consistent with the trend of recent years, and the relatively low rate of increase during 1983 appears to have been a temporary phenomenon.

In the Annual Report for 1982/1983 attention was drawn to the growing awareness by the community at large of the value of national parks to the tourist industry. This awareness continues to grow. A corollary of this realisation is a continued growth in demand for improved accessibility, facilities and information as well as frustration over the limited capacity of the Authority to respond to this demand.

The problem can once again be illustrated by Hidden Valley National Park (proclaimed 13th August 1982) which is within the townsite boundary of Kununurra and which receives heavy tourist traffic. The Authority has still been unable to appoint a ranger or supply facilities.

## HISTORY OF PARKS

### HISTORY OF NATIONAL PARKS ADMINISTRATION IN WESTERN AUSTRALIA \*

The first organisation to control Government parks and gardens was the State Gardens Board, created on December 8th, 1920 with Mr. L.E. Shapcott, Secretary of the Premier's Department as its only member (Shapcott 1939).

A few days later the Under Secretary for Lands Mr. C.G. Morris joined Mr. Shapcott who was appointed Chairman and retained the position until his retirement from the Civil Service in 1942. The first lands vested in the Board were ten small reserves around the City of Perth and included East Perth Cemetery, Stirling Gardens and several other isolated areas, so small as to be of no value as parks, which were later transferred to other bodies.

At the outset the Board had no leasing or borrowing powers and the original grant of \$6,688 for 1920-21 dropped to \$2,560 in 1931. This may be compared with the funds available to the National Parks Authority for the year 1978-79 which were approximately \$2 million. However, with the aid of the philanthropist Sir Charles McNess and a pool of sustenance labour the major buildings at Yanchep and John Forrest parks were completed and various other important projects were commenced.

Shapcott was autocratic and often unorthodox in his methods, but he deserves full recognition for the drive and initiative which he brought to bear on any project under his direction. Recognition of this fact by his contemporaries was shown by the action of Alex Clydesdale, President of the Acclimatization Society which controlled the Zoo, who in March 1932 wrote to the Premier the Hon. Sir James Mitchell requesting that 'you take the institution over as a Government and hand it to the State Gardens Board'.

This was agreed to and early in 1932 the almost bankrupt Zoo came under the control of the Gardens Board with the Acclimatization Committee 'to be advisory only, the chairman to have full powers of Director and to be permitted to carry out his policy without interferences' (Jenkins 1977).

On Shapcott's retirement on August 25th 1942, Mr. G.L. Needham, Under Secretary for Lands was appointed Chairman of the Board and Messrs. W.V. Fyfe, Surveyor General, H.W. Byfield, the Assistant Under Treasurer and C.A. Gardner, Government Botanist, were appointed as members.

On April 13th 1956, the State Gardens Board, became the National Parks Board, a body corporate with perpetual succession and a common seal and was made responsible to the Minister for Lands. The membership of the new Board was broadened by the appointment of trained biologists (Jenkins 1961) and the conservation policy was strengthened by the cancellation of grazing leases

\* From C.F.H. Jenkins 1980 "The National Parks of Western Australia"

and a general review of park management procedures initiated.

The fact that for many years various independent boards and committees were established to administer separate and sometimes small reserves indicates that such appointments were made largely on an ad hoc basis and that little thought was given to co-ordinating the activities of the various conservation bodies.

In 1969 the State Government moved to improve the situation by appointing the Reserves Advisory Council under the chairmanship of the Under Secretary for Lands, Mr. C.R.L. Gibson, with terms of reference to:

- '1. consider ways and means of protecting natural scenery in Western Australia;
2. consider all matters relating to National parks and relative reserves;
3. consider existing legislation in Australia for the protection of natural scenery; and
4. recommend appropriate action in relation to the foregoing and legislation, if necessary, to achieve desired objectives.'

This committee recommended the vesting of a number of important reserves including the Victoria Desert Wildlife Sanctuary and the Chichester Range National Park and recommended the allocation of various other reserves between the National Parks Board and Wildlife Authority.

However, it did not make formal recommendations concerning legislation. This was done later by the National Parks Review Committee, which was appointed in 1972 by the Hon. H.D. Evans, Minister for Lands and was comprised of the following members:

F. H. Jenkins  
President National Parks Board (Chairman),

B. Beggs  
Conservator of Forests,

B. Bowen  
Director, Department of Fisheries & Wildlife,

W. Byfield  
Under Secretary for Lands,

H. Doig  
Chairman, Public Service Board,

F. Morgan  
Surveyor General,

Dr. B.J. O'Brien  
Director, Department of Environmental Protection.

The recommendations of this Committee included the following four points:

- . the appointment of a National Parks Authority responsible to a Minister.
- . The National Parks Authority to assume the functions and responsibilities of the National Parks Board.
- . The appointment of a professional Director responsible to the National Parks Authority.
- . The power to lease and power to permit development by private enterprise.

These proposals were accepted by the Government and implemented by the passing of the National Parks Authority Act which came into force in August 1976. The Act provided for wide representation on the Authority with ex officio appointments from the Department of Lands, Fisheries and Wildlife, Forests and Tourism and special consideration for Primary Industry, Local Government and Conservation.

The inaugural Committee appointed by the Hon. Peter Jones, M.L.A., Minister for Conservation and the Environment comprised the following members:

C.F.H. Jenkins (President)  
B.J. Beggs (Conservator of Forests)  
B.K. Bowen (Director of Fisheries & Wildlife)  
N.J. Semmens (Director, Department of Tourism)  
J.F. Morgan (Surveyor General)  
Miss B.M.J. Hussey  
D.W.G. Treloar  
H.W. Sorensen  
W.G. Young

In taking over from the National Parks Board, the new Authority was fortunate to inherit the fine two storey Administration Building, standing on the Matilda Bay Reserve and constructed in 1975.

In 1974 the Government appointed Dr. F. G. Smith as the first Director of National Parks. This with the establishment of the National Parks Authority in 1976 brought to an end almost twenty years of uncertainty and improvisation for the national parks service and gave a clear indication of its changed status and the rapid growth to be expected in the future.

As at June 1984, the National Parks Authority membership comprised:

Prof. A.R. Main Ph.D, F.A.A., C.B.E., - President,  
B.M.J. Hussey, B.Sc.(Hons.), (Bot), Cert. Ed.,  
H. W. Sorensen, A.A.S.A., F.B.S., M.B.E.,  
D.W.G. Treloar, M.Sc. (Agric.)  
A. J. Fewster,  
The Acting Conservator of Forests, P.J.McNamara, M.A., F.A.I.M.,  
The Director of Fisheries & Wildlife, B.K.Bowen, B.Sc.,  
The Surveyor General, J.F. Morgan, L.S., F.I.S.(Aust), M.A.I.C.,  
The Commissioner, W.A. Tourism Commission, L. Hitchen

The Executive Officer of the Authority and current Director of National Parks is Mr. Colin C. Sanders, B.Sc.(Hons.), M.Sc.

## NATIONAL PARKS AND RESERVES

### STATISTICS

As at the 30th June 1984, the total of reserves vested in or under the control and management of the National Parks Authority was:-

National Parks - 50;\* Reserves - 13\* Total area: 4 426 811 ha

### CHANGES TO NATIONAL PARKS

Addition - Frank Hann National Park  
Reserve No. C27025 - addition of  
11,543 ha

Transfer - Haddleton Flora Reserve to Western Australian  
Wildlife Authority - 1,325 ha

Chichester National Park now named Millstream-Chichester  
National Park

Deletion - Part Pemberton National Park  
Reserve C19857 (Caravan Park and Swimming  
Pool) transferred to Pemberton-Northcliffe  
Tourist Bureau - 122 ha

### NATIONAL PARKS (GENERAL)

ALEXANDER MORRISON NATIONAL PARK - Class A Reserve of 8501 ha comprising Reserves A29800, A29803 and A29804 located north-west of Jurien Bay and controlled by the Ranger in charge of Watheroo National Park. A representation of plant and wildflower habitat in the northern sandplain.

AVON VALLEY NATIONAL PARK - An A Class Reserve of 4 368 ha having a resident Ranger in charge. It is an area of magnificent scenery in the river valleys of the Darling Scarp and is an excellent representative area of the transition zone between the forest block and wheat belt country.

BADGINGARRA NATIONAL PARK - Situated north-east of the Cervantes townsite and Nambung National Park, this area of 13 121 ha was reserved mainly for the preservation of Black Kangaroo Paws. It is also known to contain many other rare and restricted plant species.

BOORABBIN NATIONAL PARK - An A Class Reserve of 26 000 ha situated on each side of the Great Eastern Highway, west of Boorabbin. Typical shrubland of the sand plain east of the wheatbelt.

CAPE ARID NATIONAL PARK - An A Class Reserve of 279 415 ha having magnificent coastal scenery, popular for camping and fishing. A Ranger is resident in the park near the mouth of the Thomas River.

\* 65 Parks and Reserves in 1982/83.



CAPE LE GRAND NATIONAL PARK - An A Class Reserve consisting of 31 390 ha on the south coast about 32 km east of Esperance. It has magnificent coastal scenery with granite peaks and swamps rich in birdlife. The area is popular for summer camping and fishing holidays. The Ranger is resident in the park.

CAPE RANGE NATIONAL PARK - The park was extended to include a part of former Yardie Creek Station and was classified A Class reserve in 1974. The park consists of 50 581 ha situated on the north west coast near Exmouth. It contains rugged mountain scenery with deeply eroded gorges and a coastline well patronised for camping and fishing during the winter months. The park is controlled by a Ranger located in Exmouth.

COLLIER RANGE NATIONAL PARK - This Class C Reserve of 277 841 ha consists of high ground between the upper reaches of the Ashburton and Gascoyne Rivers. The park contains large areas of ungrazed spinifex and soft grass country.

D'ENTRECASTEAUX NATIONAL PARK - A series of irregular A Class reserves totalling 36 599 ha. A complex area of wetlands, forests and coastal dunes rich in plant species and containing many unusual habitats. The park is situated between Black Point and Marlinup on the south coast of the State.

DROVERS CAVE NATIONAL PARK - An A Class Reserve of 2 681 ha located north of Jurien Bay. This area is under the supervision of the Ranger in charge of Nambung National Park, situated in a coastal sand plain area where wildflowers and karst feature.

DRYSDALE RIVER NATIONAL PARK - This Reserve consists of 435 591 ha of wooded country in the North Kimberley. The Drysdale River flows through the middle of the reserve which includes the Ashton Range and the Carson escarpment. A large isolated wilderness area requiring National Parks Authority permission to enter.

EUCLA NATIONAL PARK - An A Class Reserve of 3 342 ha situated on the south coast at the Western Australia/South Australia border. An arid to semi-arid area of sand hills and mallee country with coastal limestone cliffs.

FITZGERALD RIVER NATIONAL PARK - A major Reserve of 242 739 ha situated on the South Coast between the Gairdner, Fitzgerald and Phillips River, west of Culham Inlet and the Hopetoun townsite. Its most interesting features are the Fitzgerald and Hamersley River Gorges and spectacular cream coloured spongolite cliffs. It contains magnificent coastal and mountain scenery and unique flora and fauna. The area is serviced by a Ranger based in the Park and an assistant Ranger resident at Quaalup and one at East Mt. Barren.

FRANK HANN NATIONAL PARK - This is an area of 61 420 ha, the majority of this comprises land 1.5 km wide on each side of the Lake King - Norseman Road. The park represents a cross section of the heath flora of the inland sand plain east of the wheatbelt.

GEIKIE GORGE NATIONAL PARK - This area of 3 136 ha about 16 km from Fitzroy Crossing contains a beautiful gorge where the river cuts through an ancient limestone barrier reef. A campsite and river trips are operated by a Ranger during the dry season.

GOONGARRIE NATIONAL PARK - An A Class Reserve of 49 878 ha representing Mulga country near to the Eucalypt Mulga line. This is the only national park containing a large area of Mulga dominated vegetation at the southern end of the range of that species.

GOOSEBERRY HILL NATIONAL PARK - A scenic lookout of 33 ha located on the western edge of the Darling Range escarpment a few kilometres from Kalamunda.

GREENMOUNT NATIONAL PARK - An area of 56 hectares reserved for its panoramic views of the coastal plain, Swan River and Perth city and its suburbs. Contains a fine representation of Jarrah trees.

HAMERSLEY RANGE NATIONAL PARK - This is the second largest single national park under the Authority's control and comprises an area of 617 606 ha. The area is one of spectacular mountains, gorges, water course and plateaux. Points of special interest are Fortescue Falls, Circular Pool, Dales Gorge, Joffre Falls and Red Gorge. The Ranger in charge of this national park has his headquarters in the park and camping is permitted in designated areas.

HASSELL NATIONAL PARK - This A Class Reserve of 1 264 ha is situated along the main Albany-Bremer Bay Road and is reserved for the protection of its flora and fauna.

HIDDEN VALLEY NATIONAL PARK - The National Park of 1 817 ha is a rugged area of sandstone hills and valleys with limited access except to the key feature, Hidden Valley itself. The whole area is outstandingly beautiful with some areas of great significance to Aboriginal people and is situated on the town boundary of Kununurra.

JOHN FORREST NATIONAL PARK - This national park is an A Class Reserve of 1 578 ha situated in the Darling Range about 27 km from Perth. It is Western Australia's first national park being declared in 1895 and contains open forest and woodland and has outstanding displays of wildflowers during the spring. There is a natural swimming pool for the enjoyment of the public and the Park is serviced by a Ranger staff of eight.

KALAMUNDA NATIONAL PARK - An A Class Reserve of 375 ha. This area is rich in wildflowers, particularly Blue Leschenaultia, and it has been the Authority's policy to leave it mainly undeveloped.

KALBARRI NATIONAL PARK - This A Class Reserve of 186 076 ha is quickly becoming one of the State's most popular national parks. Located some 644 km north of Perth near the mouth of the Murchison River, the park has outstanding gorge scenery along the river, and the limestone and sandstone cliffs provide magnificent coastal scenery. Good accommodation including hotel/motel, camping and caravan parks, swimming, surfing and fishing facilities are available at the townsite at Kalbarri.

LEEWIN-NATURALISTE NATIONAL PARK - Consists of a series of Class A Reserves of 15 493 ha, mainly on the ridge of granite gneiss and limestone which runs along the coast between Cape Naturaliste and Cape Leeuwin. Spectacular caves, coastal scenery, heathland and forest occur in this park.

LESMURDIE FALLS NATIONAL PARK - A Small A Class Reserve of 56 ha which gives good views of the coastal plain and the suburban Perth metropolitan area. The area is a popular picnic spot situated 24 km from Perth.

MILLSTREAM-CHICHESTER NATIONAL PARK - Class A Reserve of about 199,710 ha. This park represents a number of endemic plant and animal species and is one of the only areas in the Pilbara featuring permanent fresh water. A resident Ranger is in charge.

MOORE RIVER NATIONAL PARK - This area of 17 543 ha located about 113 km north of Perth, is outstanding for its wildflowers. It is the Authority's intention at present, to leave this area undeveloped as it is a good representative area of undisturbed Swan coastal plain.

NAMBUNG NATIONAL PARK - A National Park of 17 491 ha situated south of Jurien Bay, this area is becoming increasingly popular for its wildflowers and strange natural formations, the Pinnacles. A number of caves in the area are being kept sealed to protect them from vandalism. Two Rangers are resident in Cervantes townsite.

NEERABUP NATIONAL PARK - This Class A Reserve of 1 078 ha is located on the Perth-Yanchep road a few kilometres north of Wanneroo and is being maintained in its natural state. It is a good representative sample of Spearwood formation limestone.

PEAK CHARLES NATIONAL PARK - Centres on spectacular granite outcrops representing flora of the south-west portion of the goldfields, this C Class Reserve of 39 959 ha has excellent scenic panoramas of surrounding areas.

PEMBERTON NATIONAL PARKS - Areas collectively known as the Pemberton National Parks, consisting of Class A Reserves 7691 (Warren National Park) 1 356 ha, 7692 (Beedelup National Park) 1 531 ha, 19424 (Brockman National Park) 48 ha, and 17519 (Miscellaneous Reserves alongside alignment of Old Vasse Road) 206 ha: A Ranger is based on the Old Vasse Road between the Warren and Beedelup National Parks. All the parks are situated in outstanding Karri forest.

PORONGURUP NATIONAL PARK - An A Class Reserve of 2 401 ha, between the Stirling Range National Park and Albany. It incorporates the granite peaks of the Porongurup Ranges, the slopes of which are heavily forested with Karri Eucalyptus diversicolor. Accommodation is available at the nearby Karribank Motel/Guest House. A Ranger is stationed in the Park.

RUDALL RIVER NATIONAL PARK - Class A Reserve 34 607, about 1 569 459 ha around Rudall River, east from Roy Hill and Nullagine. It is an excellent presentation of sand dunes and of the salt lake systems of the North-East Pilbara.

SCOTT NATIONAL PARK - An A Class Reserve of 3 273 hectares situated 6.5 km north-east of Augusta townsite originally created in 1959 to protect the waterways at the junction of the Scott and Blackwood Rivers and the Jarrah, Marri and Karri forests existing in the area. Named after Robert Scott who first selected land in the southern portion of the reserve in 1871.

SERPENTINE NATIONAL PARK - This A Class Reserve of 635 ha on the Serpentine River, is popular for picnicking and is noted for its waterfall. The park has a resident Ranger.

SIR JAMES MITCHELL NATIONAL PARK - An A Class Reserve consisting of an area of 1 087 ha stretching along the South West Highway, for a length of 64 km. As its width is 100metres on each side of the road, it ensures that this stretch of road will remain a drive displaying natural flora.

STIRLING RANGE NATIONAL PARK - An A Class Reserve of 115 671 ha. This is a major national park and is situated 322 km south-east of Perth. It is noted for its wildflowers and mountain peaks, the highest of which, Bluff Knoll, rises 1073 metres above sea level. In order that the surrounding farmland be protected from bush fires escaping from this rugged park, an extensive system of fire breaks has had to be cut. There is a commercial caravan park on the northern boundary of the park opposite the Bluff Knoll turn-off, and overnight camping is permitted at Moingup Springs. Two Rangers are resident in the park.

STOKES NATIONAL PARK - An area of 9 493 ha on the south coast of Western Australia adjoining Stokes Inlet and Lake Cobinup Reserve, to preserve the foreshores of these waterways. A Ranger in charge is in residence in the park.

TATHRA NATIONAL PARK - This Reserve with an area of 4 323 ha is noted for its wildflowers and for the present is being maintained in its natural state.

TORNDIRRUP NATIONAL PARK - This Reserve with an area of 3 868 ha is located south-west of the town of Albany. It is noted for its flora and fauna and rugged coastline with particular tourist attractions being the Gap and the Natural Bridge. The area is maintained by a Ranger

TUNNEL CREEK NATIONAL PARK - This Reserve has an area of 91 ha. Situated about 184 km east of Derby, and 29 km south-east of Windjana Gorge National Park, Tunnel Creek is a stream which flows across the Napier Range and through a large natural tunnel eroded in the limestone by the creek itself.

WALPOLE-NORNALUP NATIONAL PARK - This Reserve of 18 116 ha is located on the South Coast of Western Australia some 418 km south-east of Perth. It is an area of great scenic beauty, noted for its flora, fauna, fine stands of Karri and Tingle forest, coastal views and enclosed inlets. The establishment of a camping and caravan park at Coalmine Beach, controlled by the Authority, has resulted in the area becoming a popular resort and noted for its swimming, fishing and yachting. There are three resident Rangers.

WALYUNGA NATIONAL PARK - Walyunga National Park consists of an area of 1 790 ha, located approx. 37 km north-east of Perth. It is noted for its scenic views and flora and for the fact that it was a large camping area formerly used by Aborigines. The establishment of facilities at Walyunga and Long Pools together with the rapids that occur during the winter, have resulted in the Park becoming one of the most popular picnic spots adjacent to Perth. There is a Ranger in residence.

WATHEROO NATIONAL PARK - This A Class Reserve of 44 324 ha is considered valuable for the preservation of native flora and fauna. A ranger is resident in the park.

WILLIAM BAY NATIONAL PARK - An A Class reserve consisting of 1 902 ha and noted for its flora and fauna and coastal scenery. A Ranger is in residence.

WINDJANA GORGE NATIONAL PARK - This A Class Reserve of 2 134 ha situated in the Kimberleys, contains a remarkable gorge where the Lennard River cuts through an ancient limestone reef. The gorge is 4 km long and has nearly vertical walls up to 76 metres high.

WOLF CREEK CRATER NATIONAL PARK - An area of 1 460 ha situated 104 km south of Halls Creek and set aside for the protection of a meteorite crater 800 metres wide, 49 metres deep and an area of 1 296 ha.

YALGORUP NATIONAL PARK - The land portion of this A Class Reserve of 11 545 ha was placed under the National Parks Authority's control in January 1968. The park is located on the coastal plain south of Mandurah and contains a system of parallel lakes which are noted for their birdlife. It possesses delightful heath and woodland scenery, interesting geological features and also is noted for its flora and animal life. A ranger resides in the park.

YANCHEP NATIONAL PARK - This A Class Reserve of 2 799 ha, located 51 km north of Perth was established as a park in 1905. It is a noted tourist attraction containing caves, a swimming pool, golf course, boating, ovals and picnic grounds together with a fauna exhibit of koalas. Accommodation is provided by the Yanchep Inn (licenced). Development around the entrance to this park may suggest that large areas have been given over to tourist facilities, but in fact 90% of the Reserve is a haven for a large assortment of water fowl and other birdlife while the surrounding bushland is rich in native flora and fauna. This park with its many facilities for the public is maintained by 18 Ranger staff.

#### RESERVES (GENERAL)

ARALUEN-CANNING RESERVE - A small strip of land of 20 ha. The area lies between the Canning River and McNess Drive and extends from the vicinity of Araluen to the boundary of Canning Dam Water Reserve.

CHARLES GARDNER FLORA - An A Class Reserve of 792 ha. It is an area of outstanding botanical interest and is located south of Tammin.

EAST PERTH CEMETERY - An A Class Reserve of about 5 ha. This area is situated on high ground at the eastern end of the City of Perth and is the last resting place of many of the State's early pioneers. A Ranger is in attendance.

GEEKABEE HILL FLORA - A small area of 4 ha reserved for the protection of flora (Lambstails).

KEANE'S POINT - A Reserve of about 2 ha, leased to the Royal Freshwater Bay Yacht Club Inc., which has established excellent aquatic facilities there.

KINGS PARK - Small portion, an area of 0.4 ha. This site is leased for the purpose of a refreshment kiosk, Bernies.

MATILDA BAY - Class A Reserve of about 25 ha situated about 5 km from Perth. This Reserve now contains the Administration Headquarters of the National Parks Authority. Improvements in recent years have enhanced the appearance and utilisation of this Reserve by the public. The Royal Perth Yacht Club Inc., Mounts Bay Sailing Club Inc., Perth Dinghy Sailing Club Inc., The Governors of Hale School and the 1st Pelican Point Sea Scouts Group lease sites on this Reserve whilst the University of Western Australia Rowing Club occupies a boatshed on the foreshore. These Clubs and the Sea Scouts are making worthwhile contributions towards providing facilities for the enjoyment of aquatic sports on the Swan River. Three Rangers are in attendance.

NOWERGUP RESERVE - An A Class Reserve of 117 ha, the major part being Lake Nowergup and surrounds which was set aside for the purpose of a sanctuary for fauna.

OLD MILL RESERVE, SOUTH PERTH - A small Reserve of about 0.2 ha located at the South Perth end of the Narrows Bridge. The area is leased to the firm of Bristile Limited, who arranged restoration of the Old Mill and cottage and established a historical museum on the site.

PORONGURUP EAST - An A Class Reserve comprising 61 ha located 40 km north of Albany, reserved for flora protection.

PENGUIN ISLAND - An A Class Reserve of 13 ha which is situated about 48 km south of Perth and 1.6 km offshore near Safety Bay. It is a sanctuary for penguins and a portion of this island is leased as a holiday centre.

STOCKYARD GULLY - An A Class Reserve of 1 406 ha, reserved for its conservation of flora, water and protection of caves. Stockyard Gully is a small stream that drains low sand plain country south west of Eneabba. The stream, which is intermittent, flows westward to its north-trending belt of coastal limestone, and disappears into a series of subterranean caverns. The gully lies mainly in rough karst country with limestone outcrop lightly clothed in low heath.

YANCHEP FLORA - Comprises Class A Reserve of 113 ha, situated 48 km north of Perth and reserved for the protection of flora and has been left in its natural state.

National Parks and Reserves vested in or under the Authority as at 30th June, 1984

NAME OF AREA	RESERVE NO.	PURPOSE	AREA(HA)	LOCAL AUTHORITY
Alexander Morrison NP	A 29800	National Park	3 027	Coorow
	A 29803	National Park	4 097	Coorow
	A 28804	National Park	1 377	Coorow
			<hr/> 8 501 <hr/>	
Araluen-Canning	C 21569	Recreation	20	Armadale T.C.
Avon Valley NP	A 30192	National Park	4 368	Toodyay
Badgingarra	A 31809	National Park	13 121	Dandaragan
	C 32928	Housing (NPB)	0.2	Badgingarra T.S.
Boorabbin NP	A 35004	National Park	26 000	Coolgardie
Cape Arid NP	A 24047	National Park	278 120	Esperance
	C 14234	National Park and water	1 295	Esperance
			<hr/> 279,415 <hr/>	
Cape Le Grand	A 22795	National Park	31 390	Esperance
	C 32561	Housing (NPB)	0.2	Esperance T.S.

NAME OF AREA	RESERVE NO.	PURPOSE	AREA (HA)	LOCAL AUTHORITY
Cape Range NPA	A 27288	National Park	50 581	Exmouth
	-	Housing	-	Exmouth T.S.
Charles Gardner Reserve	A 20041	Flora	792	Tammin
Collier Range NP	C 35104	National Park	277 841	Meekatharra
D'Entrecasteaux NP	A 26628	National Park and Water	1 607	Nannup
	A 28478	"	65	Manjimup
	A 28479	"	32	Nannup
	A 36996	"	34 895	Nannup & Manjimup
			<hr/>	
			36 599	
Drovers Cave NP	A 31202	National Park	2 681	Dandaragan
Drysdale River NP	B 32853	National Park	435 591	Wyndham/East Kimberley
East Perth Cemetery	A 21054	Disused burial ground	5	Perth City
	C 25631	Public Park	0.5	"
Eucla	A 36205	National Park and preservation of Historic Sites	3 342	Dundas
Fitzgerald River NP	A 31737	National Park	234 315	Gnowangerup & Ravensthorpe
	A 31738	National Park	8 424	Ravensthorpe
	C 32331	Housing (NPB)	0.1	Jerramungup TS
			<hr/>	
			242 739	
Frank Hann NP	C 27023	National Park	61 420	Dundas & Ravensthorpe
Geekabee Hill	C 30916	Flora (lambstails)	3.8	Cranbrook
Geikie Gorge NP	A 28401	National Park	3 136	West Kimberley
	C 35071	Housing (NPA)	1	Fitzroy Crossing TS
Goongarrie NP	A 35637	National Park	49 878	Menzies
Gooseberry Hill NP	A 30200	National Park	33	Kalamunda
Greenmount NP	A 25313	National Park	56	Mundaring
Hamersley Range NP	A 30082	National Park	617 606	West Pilbara
	-	Housing	-	Wittenoom TS
Hassell NP	A 26650	National Park	1 264	Albany
Hidden Valley	A 37883	National Park	1 817	Wyndham-East Pilbara
John Forrest NP	A 7537	NP & Native Game	1 574	Mundaring
	A 8164	National Park	4	Mundaring
			<hr/>	
			1 578	
Kalamunda NP	A 21314	National Park	375	Kalamunda



NAME OF AREA	RESERVE NO.	PURPOSE	AREA (HA)	LOCAL AUTHORITY
Kalbarri NP	A 27004	National Park	186 076	Northampton
	C 28760	Housing (NPB)	0.1	Kalbarri Ts
	C 29831	"-	0.1	Kalbarri TS
	C 30949	"-	0.1	Kalbarri TS
	C 32472	"-	0.08	Kalbarri TS
Keane's Point	A 17060	Recreation	2	Peppermint Grove
King's Park	Pt.A 1720	Public Park	0.4	City of Perth
Leeuwin-Naturaliste NP	A 7406	NP & Water	167	Augusta-Marg.River
	A 8427	Caves,Flora & Health	688	Busselton
	A 8428	National Park	68	"-
	A 8429	National Park	790	"-
	A 8430	National Park	318	Augusta-Marg.River
	A 8432	National Park	65	"-
	A 8433	National Park	215	"-
	A 8434	Protection & Preservation of Caves, Flora & for Health & Pleasure Resort	2 254	Augusta-Marg.River
	A 8435	National Park	192	Augusta-Marg.River
	A 8438	Caves, Flora & Health	546	Augusta-Marg.River
	A 8694	National Park	279	Augusta-Marg.River
	A 8768	National Park	243	Busselton
	A 10922	National Park	157	"-
	A 12507	"-	34	"-
	A 13404	Recreation & Ocean frontage	NA	Busselton & Augusta Marg. River
	A 13984	Water & NP	65	Augusta-Marg.River
	A 14779	National Park	104	"-
	A 15633	"-	707	"-
	A 20171	"-	312	Busselton
	A 20455	"-	524	"-
	A 20548	"-	2 325	Augusta-Marg.River
	A 20849	"-	252	"-
	A 21451	"-	848	"-
	A 22673	"-	1 075	"-
	A 23286	"-	87	"-
	A 30826	"-	339	"-
	A 32376	"-	1 640	"-
A 35035	"-	768	"-	
A 35036	"-	431	"-	
		15 493	* excludes area of Al3404 unknown	
Lesmurdie Falls NP	A 22515	National Park	35	Kalamunda
	A 26247	"-	21	Kalamunda
		56		

NAME OF AREA	RESERVE NO.	PURPOSE	AREA (HA)	LOCAL AUTHORITY
Matilda Bay	A 17375	Recreation	25	Subiaco
Millstream- Chichester NP	A 24392	National Park	441	West Pilbara
	A 38333	National Park	48 660	"-
	A 30071	National Park	150 609	"-
			<u>199,710</u>	
Moore River NP	C 28462	National Park	17 543	Gingin
Nambung NP	A 24522	NP & Water	3 910	Dandaragan
	C 28393	Preserv. Nat. Formations	11 955	"-
	C 29149	National Park	1 626	"-
	C 30392	Ranger's HQ	0.3	Cervantes TS
			<u>17 491</u>	
Neerabup NP	A 27575	National Park	1 078	Wanneroo
Nowergup	A 24581	Sanctuary for Fauna	117	Wanneroo
Old Mill, South Perth	C 20804	Public Rec.	0.2	South Perth
Peak Charles NP	C 36004	NP & Water	39 959	Dundas
Pemberton	A 7691	National Park	1 356	Manjimup
	A 7692	"-	1 531	"-
	A 17519	"-	206	"-
	A 19424	"-	48	"-
	C 37882	Effluent treat. Plant site	.4	"-
			<u>3 141</u>	
Penguin Island	A 17070	Recreation Camping etc.	13	Rockingham
Porongurup NP	A 18987	National Park	2 401	Plantagenet
Porongurup- East of	A 25705	National Park	61	Albany
Rudall River NP	A 34607	National Park	1 569 459	East Pilbara
Scott NP	A 25373	NP & Recreation	3 273	Augusta-Marg.River
Serpentine NP	A 28862	National Park	635	Serpent.Jarrahdale
Sir James Mitchell NP	A 18705	National Park	1 087	Manjimup
Stirling Range NP	A 14792	National Park	115 671	Gnowangerup, Plantagenet, Cranbrook & Albany
Stockyard Gully	A 36419	Cons.of Flora Water & Prot. of Caves	1 406	Coorow

NAME OF AREA	RESERVE NO.	PURPOSE	AREA (HA)	LOCAL AUTHORITY
Stokes NP	A 32590	National park	9 493	Esperance
Tathra NP	A 29802	National Park	1 393	Carnamah
	A 29805	"-	2 930	"-
			<u>4 323</u>	
Torndirrup NP	A 24258	NP & Recreation	3 813	Albany
	C 5225	National Park	55	"-
			<u>3 868</u>	
Tunnel Creek	C 26890	National Park	91	West Kimberley
Walpole-Nornalup NP	A 13045	Parkland	372	Manjimup
	A 19175	National Park	4	"-
	A 19176	National Park	9	"-
	C 26583	Golf Links	14	"-
	C 26584	Yacht Club site	0.8	"-
	A 31362	National Park	17 716	Manjimup & Denmark
			<u>18 116</u>	
Walyunga NP	C 2065	National Park	172	Swan
	-	not gazetted	1 618	Swan
			<u>1 790</u>	
Watheroo NP	A 24229	National Park	1 633	Dandaragan
	A 24450	"-	2 903	"-
	A 24491	"-	39 788	"-
			<u>44 324</u>	
William Bay NP	C 12046	NP & Water	33	Denmark
	A 24482	National Park	1 867	"-
	C 37196	Housing	2	"-
			<u>1 902</u>	
Windjana Gorge NP	A 31107	National park	2 134	West Kimberley
Wolf Creek	A 29457	Protect.of Meteorite Crater	1 460	Halls Creek
Yalgorup NP	A 11710	National Park	9 079	Harvey & Waroona
	A 12189	"-	1 587	Mandurah
	C 21271	"-	520	"-
	A 22057	"-	359	Waroona
			<u>11 545</u>	
Yanchep Flora	A 24436	Prot.of Flora	113	Gingin
Yanchep NP	A 9868	National Park	2 799	Wanneroo
			<u>4,426,811 ha</u>	

## ADMINISTRATION

### GENERAL STATEMENT

The establishment number for staff of the National Parks Authority improved over the reporting year by two positions, through funds provided from the Government's Global Allocation for staff.

The establishment now stands at 102, being comprised of 21 Public Service positions (attached administratively to the Department of Conservation and Environment); and, 81 wage staff - including 78 rangers.

During the year the Public Service Board also reorganised the affiliation of the Superintendents of Yanchep and John Forrest National Parks respectively, bringing these two positions into the Public Service. These officers have now been retitled 'Supervisor'.

In addition, one of the new positions created was for a 'Supervisor' for the Southern Region, which includes 20 national parks spread between Cape Leeuwin - Kalgoorlie - and Eucla. There are also 20 rangers deployed in the South to manage and maintain 10 of these parks.

The new 'Supervisor' is Mr. Terry Passmore who formerly was Ranger in Charge of Cape Le Grand National Park at Esperance. His role will be to assist the Albany-based Southern Regional Superintendent of National Parks Dr. John Watson, in the organisation and administration of this vast area. In this regard, already an improvement in communications with all staff and with local authorities has accrued from Mr. Passmore's appointment.

The other position from the Global allocation allowed for a further caravan-based mobile ranger to be appointed, bringing the total for these officers to 14.

Mobile rangers are assigned to assist resident rangers around the State, as circumstances require. Mainly they are deployed in the more tourist orientated national parks, particularly in the Southern Region during Summer and in the North-West over Winter and Spring.

### RANGER MOVEMENTS

During the year a ranger station, comprised of a house, shed and equipment was established at Watheroo National Park. A Ranger in Charge has been appointed and he will also be responsible for Tathra, Alexander Morrison and Stockyard Gully National Parks. This initiative will reduce the management load on the two rangers currently based at Cervantes, who before January 1984, had been responsible for eight northern sand-dune national parks, located between Moore River and Eneabba.

With the appointment of Mr. Passmore to the 'Supervisor' position at Albany, a number of ranger positions have been rotated. In this regard, Mr. I. Solomon who had been Ranger in Charge of Hamersley Range National Park for six years, has been reassigned to Cape Le Grand. Other ranger movements during the year have resulted in Mr. K. Cunningham from Pemberton taking up a promotion to Hamersley Range National Park, and Mr. K. Mucjanko moving from John Forrest National Park to Pemberton to become Ranger in Charge of the shortly to be enlarged D'Entrecasteaux National Park.

Mr. W. Treacy who had been the ranger responsible for the Pemberton Caravan Park is now in charge of the various Pemberton national parks - Warren, Beedelup and Brockman. Also Mr. R. Rickman has been promoted to Watheroo National Park with Mr. A. Smith (from Yanchep) replacing him at Kalbarri.

With one ranger resignation during the year, Mr. J. Smith from Yanchep, has transferred to the East Mt. Barren section of the Fitzgerald River National Park.

#### RANGER ESTABLISHMENTS

Because of budgetary and staffing constraints imposed upon the National Parks Authority, so far only 26 of the State's 63 national parks and reserves vested under our control have been manned by rangers. However, over recent years, a number of parks have been manned for the first time, only by the deletion of some ranger positions in the Metropolitan Region, which has resulted in some unfortunate strain at Yanchep and John Forrest National Parks.

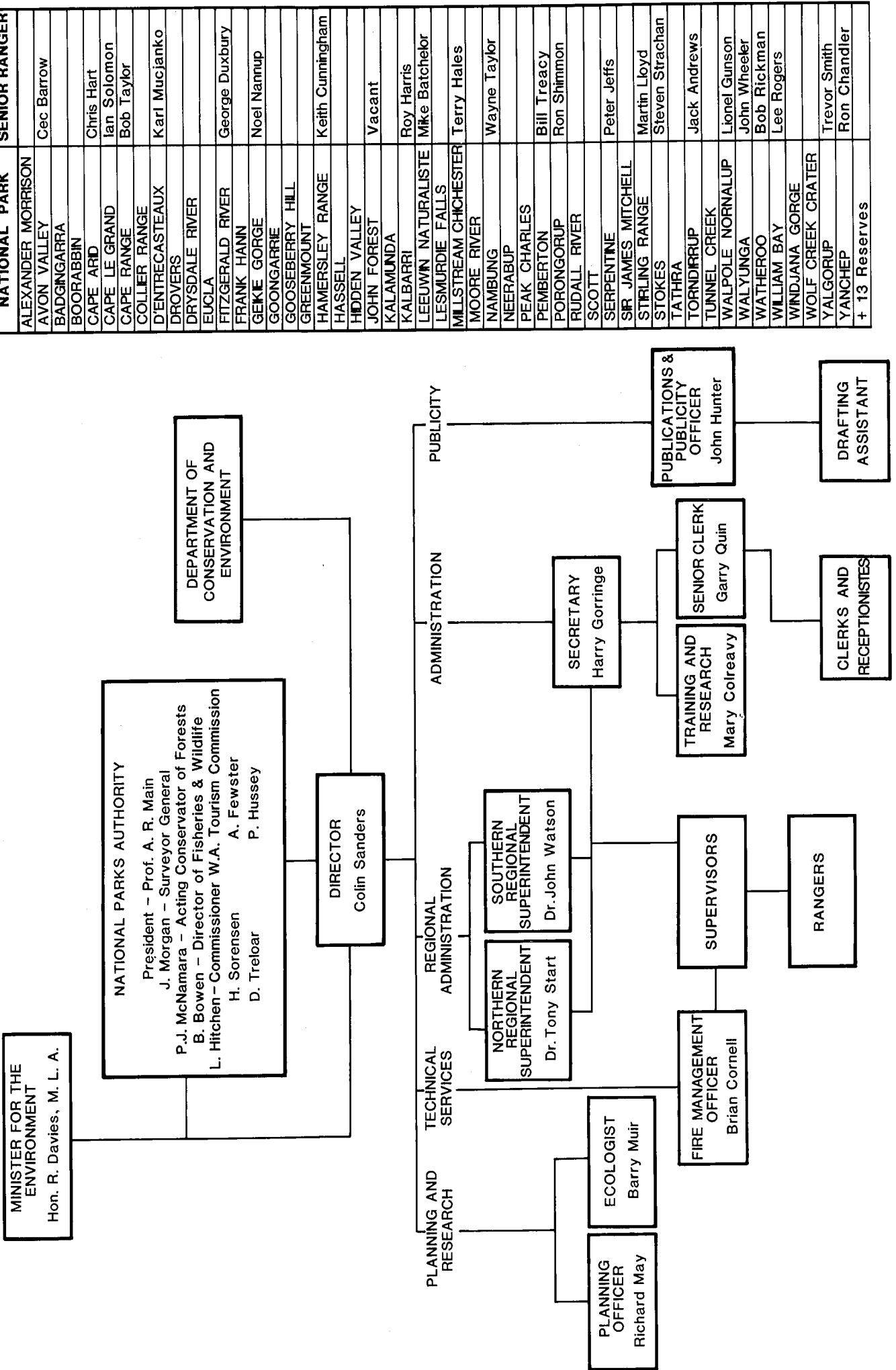
With tourism and recreation generally still rising throughout the State's network of national parks, the Authority remains very concerned at the number of national parks where there is no ranger presence.

The Authority retains as its priorities, the establishment of ranger stations at Hidden Valley National Park, Kununurra; Boranup Block in the Leeuwin-Naturaliste National Park; an assistant for D'Entrecasteaux National Park (which is shortly to be doubled in size); as assistant ranger for Walyunga National Park, and, an assistant ranger for Hamersley Range National Park.

If these positions are created, it will only allow one more area, the heavily visited Hidden Valley National Park which forms a back drop to Kununurra, to be opened-up for more intensive management. Presently this park attracts about 50 000 visitors per year.

The other positions being sought are designed to improve the Authority's land management capability at various national parks where ranger stations are already in place, but where tourism pressures are high and beyond the capacity of the present staff to cope adequately.

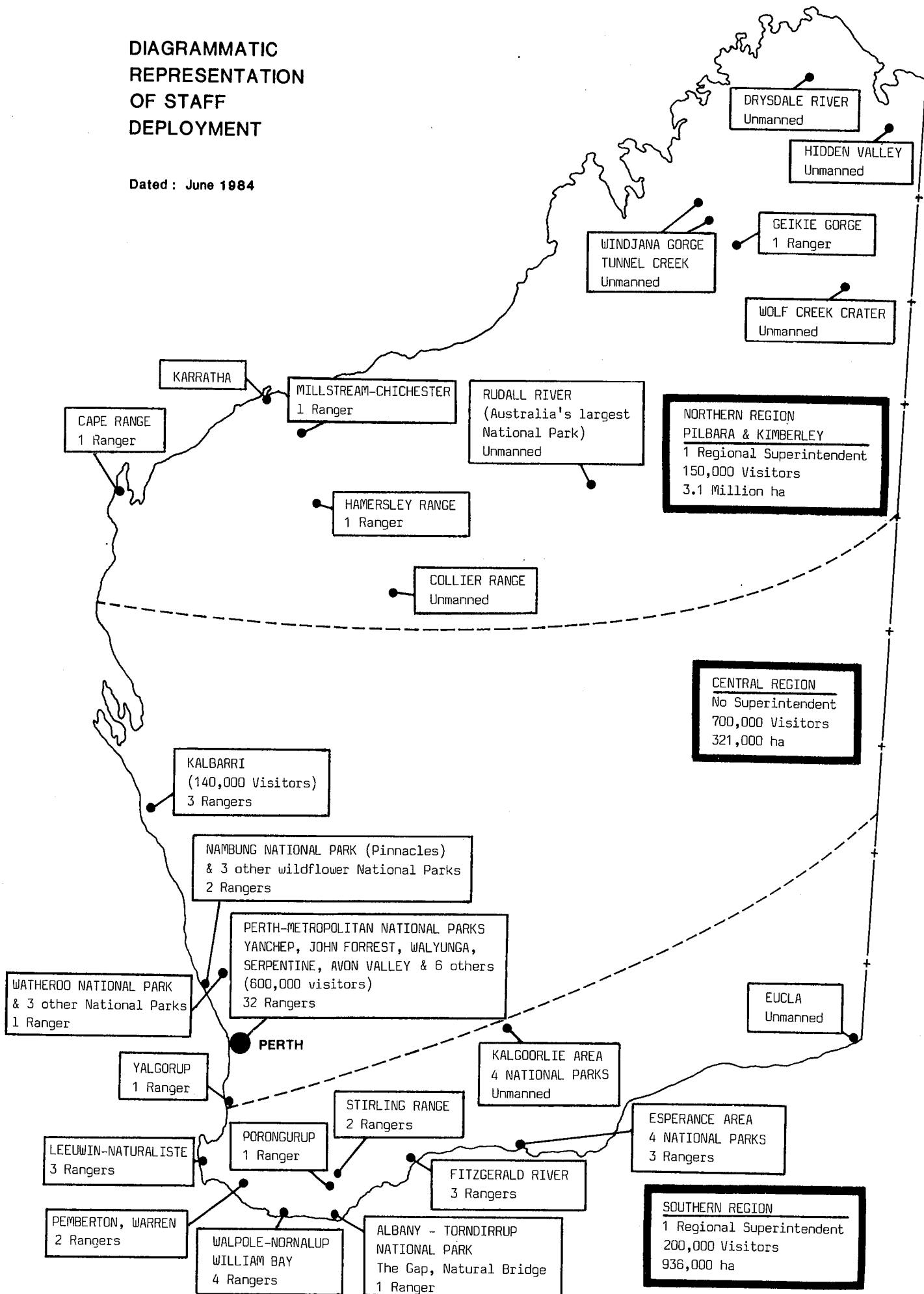
# ORGANIZATION



NATIONAL PARK	SENIOR RANGER
ALEXANDER MORRISON	
AVON VALLEY	Cec Barrow
BADGINGARRA	
BOORABBIN	
CAPE ARID	Chris Hart
CAPE LE GRAND	Ian Solomon
CAPE RANGE	Bob Taylor
COLLIER RANGE	
D'ENTRECASTEAUX	Karl Mucjanko
DROVERS	
DRYSDALE RIVER	
EUCLA	
FITZGERALD RIVER	George Duxbury
FRANK HAINN	
GEKIE GORGE	Noel Nannup
GOONGARRIE	
GOOSEBERRY HILL	
GREENMOUNT	
HAMERSLEY RANGE	Keith Cunningham
HASSELL	
HIDDEN VALLEY	
JOHN FOREST	Vacant
KALAMUNDA	
KALBARRI	Roy Harris
LEEUEWIN NATURALISTE	Mike Batchelor
LESMURDIE FALLS	
MILLSTREAM CHICHESTER	Terry Hales
MOORE RIVER	
NAMBUNG	Wayne Taylor
NEERABUP	
PEAK CHARLES	
PEMBERTON	Bill Treacy
PORONGORUP	Ron Shimmon
RUDALL RIVER	
SCOTT	
SERPENTINE	Peter Jeffs
SIR JAMES MITCHELL	
STIRLING RANGE	Martin Lloyd
STOKES	Steven Strachan
TATHRA	
TORNDIRRUP	Jack Andrews
TUNNEL CREEK	
WALPOLE NORNALUP	Lionel Gunson
WALYUNGA	John Wheeler
WATHEROO	Bob Rickman
WILLIAM BAY	Lee Rogers
WINDJANA GORGE	
WOLF CREEK CRATER	
YALGORUP	Trevor Smith
YANCHEP	Ron Chandler
+ 13 Reserves	

**DIAGRAMMATIC  
REPRESENTATION  
OF STAFF  
DEPLOYMENT**

Dated : June 1984



\*Plus 14 Mobile Rangers travelling throughout the State.

## PROFESSIONAL, TECHNICAL AND ADMINISTRATION STAFF

At the commencement of the reporting year, the Authority was able to appoint Ms Mary Colreavy as the Training and Research Officer.

Ms Colreavy, zoology graduate, has broad experience relating to natural land and wildlife management, and she has brought a resurgence of interest as well as progressiveness in ranger training.

Additionally, the National Parks Authority received a grant from the Australian National Parks and Wildlife Service which allowed Ms Colreavy to visit Aboriginal ranger training schemes at Kakadu National Park in the Northern Territory and at Gammon Range National Park in South Australia. From this knowledge, the National Parks Authority will be better equipped to set-up similar programmes for Western Australia when funds for this purpose become available.

The Authority regrets the resignation of two of its administration staff - Mrs. S. Galbraith and Mrs. S. Brown, who have decided upon careers in family development.

Dr. John Watson - Southern Regional Superintendent of National Parks was awarded a 1983 Churchill Fellowship, to visit the USA during mid-1984. Dr. Watson left in May to investigate safety methods and search and rescue techniques within the United States National Parks Service and in the Forest Service. The Authority wishes to record its congratulations to Dr. Watson on this award.

The National Parks Authority administration, professional and technical staff comprises:

Director - C. C. Sanders, B.Sc. (Hons.), M.Sc.  
Secretary - H. R. Gorringe  
Senior Clerk - G. Quin

Regional Superintendents -

Southern Region - J.R. Watson, B.Sc., Ph.D.  
Northern Region - A.N. Start, B.Sc., Ph.D.

Ecologist - B.G. Muir, B.Sc. (Hons.)  
Biologist - (Planning Officer) R. F. May, B.Appl.Sc., Dip. Agri.Sc.  
Training & Research Officer - M. Colreavy, B.Sc. (Hons.)  
Fire Management Officer - B. Cornell  
Publications & Publicity Officer - J.L. Hunter, M.P.R.I. (Aust)

The disposition of senior ranger staff is given in Organization Chart on page 43.





## AUDIT DEPARTMENT

State Insurance House, 815-823 Hay Street,  
Perth. W.A. 6000. Telephone 321 9256

IN REPLY PLEASE QUOTE  
674/66

### REPORT OF THE AUDITOR GENERAL FOR WESTERN AUSTRALIA NATIONAL PARKS AUTHORITY OF WESTERN AUSTRALIA - Audit of Accounts

The Accounts of the National Parks Authority of Western Australia have been audited for the year ended June 30, 1984 and were found to be in order.

In my opinion the Statement of Receipts and Payments submitted by the Authority fairly summarises the cash transactions for the year and the Statement of Assets and Liabilities together with the explanatory notes fairly presents the financial position at June 30, 1984.

*L. Prosser*  
AUDITOR GENERAL

November 15, 1984

NATIONAL PARKS AUTHORITY OF W.A. - STATEMENT OF RECEIPTS  
AND PAYMENTS FOR THE YEAR ENDED 30TH JUNE, 1984

	1983-84	\$	1982-83	\$
Balance July 1st	\$	(328)	\$	(262)
<b>RECEIPTS</b>				
<u>National Parks &amp; Other Reserves</u>				
Rents - General	61 272		55 658	
John Forrest	36 836		36 320	
Geikie Gorge	57 432		57 959	
Kalbarri	9 890		9 408	
Serpentine	17 615		16 782	
Walpole Normalup	20 325		20 008	
Pemberton	48 385		51 045	
Walyunga	23 718		20 842	
Yanchep	203 812		209 057	
Other Parks & Reserves	<u>41 234</u>		<u>26 272</u>	
		520 519		503 351
<u>Other Receipts</u>				
Sundry Receipts	120 777		54 112	
Sale of Surplus Assets	30 718		61 812	
Refunds & Suspense	159 452		125 178	
Wishing Well	2 072		1 866	
Wage Pause Community Employ. C/Wealth Grant Recoups	<u>314 949</u>		<u>-</u>	
		627 968		242 968
<u>Grants</u>				
Treasury		<u>3 014 000</u>		<u>2 702 000</u>
		<u>4 162 159</u>		<u>3 448 057</u>
<b>PAYMENTS</b>				
<u>Administrative Expenses</u>				
Head Office Expenses	117 160		93 220	
Head Office Salaries	424 489		425 296	
Workers Compensation	28 121		15 869	
Superannuation, Authority Contribution	42 821		41 882	
Payroll Tax	<u>110 320</u>		<u>87 501</u>	
		722 911		663 768
<u>National Parks &amp; Other Reserves</u>				
Wages	1 876 562		1 398 755	
Operating & Mtncs Costs incl. fire control.	1 073 232		1 103 120	
Improvements incl. buildings & new vehicles	96 758		90 225	
Wage Pause Community Employ. C/Wealth Grant Materials	<u>73 634</u>		<u>-</u>	
		3 120 186		2 592 100
<u>Other Payments</u>				
Sundry Payments	84 497		60 220	
Refunds & Suspense	188 367		130 431	
Wishing Well	<u>2 072</u>		<u>1 866</u>	
		274 936		192 517
				<u>3 448 385</u>
Balance June 30		(44 126)		(328)
				Overdrawn

SECRETARY

NATIONAL PARKS AUTHORITY OF W.A.  
STATEMENT OF EXPENDITURE ON IMPROVEMENTS  
FOR TWELVE MONTHS ENDING 30TH JUNE, 1984

---

CENTRAL REGION

Matilda Bay

Landscaping and reticulation 8 370  
Cycleway

Watheroo National Park

Garage and workshop 13 614  
Water supply and power 21 273

Serpentine National Park

Toilet and ablution block 20 390

Yanchep National Park

Rubbish incinerator 31 034

SOUTHERN REGION

Cape Le Grand National Park

Toilet 2 077

---

\$96 758

---

---

NATIONAL PARKS AUTHORITY OF W.A.  
 COMPARATIVE STATEMENT OF CASH POSITION  
 FOR TWELVE MONTHS ENDING 30TH JUNE 1984

ACTUAL FOR	ACTUAL FOR	ACTUAL FOR
12 MONTHS	12 MONTHS	12 MONTHS
1982/83	1983/84	1983/84
\$	\$	\$
RECEIPTS		
Revenue (Parks General)		
Rents - all locations	61 272	61 272
Cape Le Grand National Park	5 180	5 837
Geikie Gorge National Park	57 959	57 432
John Forrest National Park	36 320	36 836
Kalbarri National Park	9 408	9 890
Stirling Range National Park	3 270	3 040
Walpole Normalup National Park	20 008	20 325
Walyunga National Park	20 842	23 718
Yanchep National Park	209 057	203 812
17 822	17 822	32 357
Other Parks & Reserves (Hammersley, Cape Range, Porongurup, Millstream, Windjana, Garden Island)	51 045	48 385
Pemberton National Park	16 782	17 615
Serpentine National Park		
Revenue (Other)		
Refunds General	125 178	159 452
Sale of surplus assets and general items	61 812	30 718
Sundry Revenue	54 112	120 777
Wage Pause: Community Employment C/Wealth Grant Recoups	-	314 949
Wishing Well proceeds - Suspense	1 866	2 072
746 319	746 319	1 148 487
2 702 000	2 702 000	3 014 000
3 448 319	3 448 319	4 162 487
262	262	328
3 448 057	3 448 057	4 162 159

ACTUAL FOR 12 MONTHS 1982/83	DETAILS	ACTUAL FOR 12 MONTHS 1983/84
\$	PAYMENTS	\$
425 295	Head Office Salaries	424 489
87 501	Payroll Tax	110 320
41 882	Staff Endowment and Board Contribution	42 821
15 869	Workers Compensation	28 121
1 398 755	Wages	1 876 562
15 828	Head Office incidental expenses	10 267
15 307	Travelling allowances & motor mileage	20 778
6 507	Authority Fees	5 177
3 202	Drawing Office expenses	3 496
3 381	Postage	6 300
8 405	Stationery	7 693
15 598	Telephone Account	13 129
21 592	Insurance of buildings, public liability, vehicle & mobile plant	45 805
3 400	Office cleaning	4 575
	<u>MAINTENANCE</u>	
	<u>Northern</u>	
12 121	Cape Range National Park	13 996
31 390	Geikie Gorge, Windjana & Tunnel Creek National Parks	40 589
17 453	Hamersley Range National Park	22 539
8 898	Chichester Range & Millstream	42 355
-	Hidden Valley	-
	<u>General</u>	
14 178	Avon Valley National Park	9 116
1 852	East Perth Cemetery Reserve	1 644
32 184	John Forrest National Park	33 789
247	Lesmurdie Falls & Gooseberry Hill National Parks	2 941
38 712	Matilda Bay Reserve includes sewerage works	42 348
238	Penguin Island	87
9 642	Serpentine National Park	7 211
22 825	Walyunga National Park	23 242
97 619	Yanchep National Park	105 319
11 066	Yalgorup National Park	12 470
18 015	Nambung, Badgingarra, Drovers Cave, Moore River National Parks	16 294

ACTUAL FOR 12 MONTHS 1982/83	DETAILS	ACTUAL FOR 12 MONTHS 1982/84
\$		\$
34 409	<u>CENTRAL</u>	
-	Kalbarri National Park	31 191
	Watheroo, Alexander Morrison, Tathra	13 462
	<u>Southern</u>	
13 482	Cape Arid National Park	14 538
22 304	Cape Le Grand National Park	26 627
12 310	Cowaramup Block	10 205
-	D'Entrecasteaux National Park	-
34,332	Fitzgerald River National Park	29 104
324	Hamelin Bay Block and Boranup	1 733
12 073	Leeuwin Block and Scott River	9 031
6 756	Porongurup National Park	4 701
18 716	Stirling Range, Hassell, Hamilla Hill N/Parks	20 172
5 598	Torndirrup National Park	7 649
27 126	Walpole Normalup National Park	27 046
9 101	William Bay National Park	7 546
14 155	Yallingup Block	18 562
11 781	Pemberton National Park	9 761
15 920	Pemberton Caravan Park - swimming pool	26 152
10 264	Stokes and Peak Charles	16 669
	<u>Other</u>	
14 019	Garden Island Maintenance & Improvements	24 386
63 443	Other Parks & Reserves	71 819
53 411	Mobile Rangers 1 - 14	51 839
106 319	Maintenance Fire Breaks & Fire Control	104 237
11 984	General Signs	4 600
1 824	Vehicle Signs	-
1 812	Barbecue fireplace plates	13
4 252	Picnic tables	-
18 140	Uniforms	14 814
203 554	Vehicle and tractor replacements	110 109
-	Contingencies	-
44 273	Noxious Weed, Vermin and Erosion Control	28 178
15 000	Old Mill (as approved by A/Premier)	15 148

ACTUAL FOR 12 MONTHS 1982/83	DETAILS	ACTUAL FOR 12 MONTHS 1983/84
\$	MISCELLANEOUS EXPENSES	\$
6 631	Head office, vehicle running expenses	9 020
33 753	Publications	45 368
-	Grants, memorial plaques	-
-	Honoraria	-
3 200	Legal Services	1 600
130 431	Refunds (contra)	188 367
3 694	Rangers Courses	10 114
1 345	Charter Aircrafts, Board Inspections & Expenses	2 834
1 866	Wishing Well proceeds disbursements	2 072
4 957	Ministerial and Scientific Conferences	6 186
7 000	Scientific Research	9 375
<u>3 358 160</u>		<u>3 947 641</u>
90 225	Plus Improvements	96 758
<u>3 448 385</u>		<u>4 044 399</u>
328	Wage Pause: Community Employment: Commonwealth Grant	73 634
<u>3 448 057</u>		<u>4 118 033</u>
	Closing Balance as at 30 June 1984 - \$44,126.44	<u>44 126</u>
		<u>4 162 159</u>
	<u>COMMITTED EXPENDITURE 1984/85</u>	
	Yanchep Cabaret Cave \$9,000.	
	Matilda Bay Reserve Landscaping 35,126.	
	<u>\$44 126</u>	

NATIONAL PARKS AUTHORITY OF W.A.

STATEMENT OF ASSETS & LIABILITIES AS AT 30 JUNE 1984

<u>FIXED ASSETS (AT VALUATION)</u> (1)	\$	
Office buildings, dwellings, ancillary buildings, swimming pool, dams	4 303 155	
Furniture and fittings (Matilda Bay)	79 230	
Equipment (2)	331 843	
Motor vehicles	<u>791 420</u>	5 505 648
 <u>CURRENT ASSETS</u>		
Cash at bank	44 126	
Sundry debtors - Electricity & Rents	17 002	
Sundry Debtors - Recoups (Main Roads Wage Pause ) (3)	44 322	
Advances	1 667	
Collections on hand - not banked	22 020	
Fuel Stocks (4)	<u>6 511</u>	<u>135 648</u>
		\$5 641 296
 <u>CURRENT LIABILITIES</u>		
Sundry creditors (5)	76 465	
Accrued long service leave (6)	<u>321 868</u>	398 333
 Surplus of assets over liabilities		
		<u>5 242 963</u>
		<u>\$5 641 296</u>



NOTES:

- (1) Accounts of the historical cost and depreciation value of fixed assets have not been maintained. Valuations of fixed assets have been based on Valuer General's values and insured replacement values. These do not include leased buildings contained within National Parks and Reserves.
- (2) EQUIPMENT VALUE includes two-way radios, fire fighting equipment, office furniture, mowers, chain saws, rescue equipment, fire arms, photographic equipment and tools.
- (3) SUNDRY DEBTORS Recoup \$44,322 is 1983/84 expenditure on roads, wage pause and community employment scheme to be recouped in 1984/85.
- (4) FUEL VALUE has been based on estimates of fuel on hand at 30 June, 1984.
- (5) SUNDRY CREDITORS \$76,465 obtained from perusal of vouchers for 1983/84 expenditure paid July 1984.
- (6) ACCRUED LONG SERVICE LEAVE represents pro-rata entitlement for all salaried officers and for those wages employees with two or more years of continuous service.

VALUATIONS OF BUILDING ASSETS CONTAINED WITHIN  
NATIONAL PARKS AS AT 30 JUNE 1984

	\$
Avon Valley National Park	47 000
Cape Arid National Park	56 500
Cape Le Grand National Park	68 500
Cape Range National Park	55 000
Cowaramup National Park	52 000
East Perth Cemetery (Insured)	2 270
Fitzgerald River National Park	115 500
Fitzroy Crossing	70 000
Hamelin Bay National Park (Insured)	10 560
Hamersley Range National Park	59 500
John Forrest National Park (Insured)	134 210
Kalbarri National Park	121 000
Leeuwin Naturaliste National Park	43 500
Lesmurdie Falls National Park (Insured)	11 320
Matilda Bay Reserve (Insured)	935 800
Millstream National Park (Insured)	241 500
Nambung National Park	62 500
Pemberton National Park	49 500
Penguin Island Reserve (Insured)	12 080
Porongurup National Park	40 500
Serpentine National Park	47 000
Stirling Range National Park	110 000
Stokes National Park	59 500
Torndirrup National Park	40 000
Walpole Nornalup National Park	117 000
Walyunga National Park - Valuer General )	
98 000 )	
Insured Dam )	
10 480 )	108 480
William Bay National Park	50 000
Yalgorup National Park	43 000
Yallingup National Park	45 000
Yanchep National Park - Insured Buildings )	
1 258 185 )	
Pool - 173 250 )	1 431 435
Watheroo National Park	<u>63 000</u>
	<u>\$4 303 155</u>

NATIONAL PARKS AUTHORITY OF WESTERN AUSTRALIA

YEAR 1983/84

Vehicles and their Location

<u>MAKE AND TYPE</u>	<u>YEAR MANUF.</u>	<u>REG NO.</u>	<u>CURRENT INSURED VALUE</u>
<u>AVON VALLEY</u>			
Nissan Patrol Tray Top	84	XQY 974	10 000
Dodge 4 Ton Tip Truck	75	XQQ 033	6 000
<u>CAPE ARID</u>			
Toyota Landcruiser	81	XQQ 702	7 500
Suzuki 4 WD Model SWB	82	XQO 915	6 000
Tandem Flat Top Trailer	79	XQW 000	1 000
<u>CAPE LE GRAND</u>			
Toyota Landcruiser	81	XQP 848	7 500
International 4 WD Tip Truck C1600	69	XQJ 935	10 000
Massey Ferguson 135 FE Loader	70	UQJ 216	900
John Deere 3130 Agriculture Tractor	75	XQK 521	9 500
Viscount 15' Caravan	72	UQW 664	800
Bedford 4 x 4 R Series Fire Truck	67	UQE 689	4 000
<u>CAPE RANGE</u>			
Toyota Landcruiser	81	XQN 804	7 500
Modern Caravan	71	UQU 648	750
<u>COWARAMUP</u>			
Toyota Landcruiser	83	XQY 171	11 000
International 4 x 4 Tip Truck	69	XQA 844	7 000
Massey Ferguson 20 HP Diesel	78	XQG 120	16 000
Bedford 4 x 4 R Series Fire Truck	67	UQE 832	4 000
Custom Tandem Trailer (Vehicle Carrier)	81	XQT 448	4 000
<u>FITZGERALD RIVER</u>			
Toyota Landcruiser	83	XQY 167	11 000
Toyota Landcruiser	82	XQP 880	9 000

MAKE AND TYPE	YEAR MANUF.	REG. NO.	CURRENT INSURED VALUE
<u>FITZGERALD RIVER.....Contd.</u>			
Toyota Landcruiser	80	XQL 817	6 500
International Tip Truck C1600 4/5 Ton	70	UQJ 050	-
Bedford Tip Truck 4 x 4 MJR Diesel	76	XQJ 793	18 000
Massey Ferguson Tractor	69	UQC 709	500
Arrow Caravan	73	UQW 542	750
Fire Fighting Trailer	68	UQU 584	50
ISAS Trailer	60	UQU 578	30
Custom Tandem Trailer (Vehicle Carrier)	81	XQW 244	1 500
<u>GEIKIE GORGE</u>			
Toyota Landcruiser	82	XQR 895	9 000
<u>HAMERSLEY RANGE</u>			
Toyota Landcruiser	81	XQM 944	7 500
Easey Go Trailer	77	XQT 475	300
<u>JOHN FORREST</u>			
Toyota Landcruiser	82	XQQ 672	9 000
Toyota Landcruiser	79	XQG 659	5 500
Toyota Landcruiser	78	XQF 917	5 000
Toyota Landcruiser	76	XQX 430	2 500
Toyota Landcruiser	78	XQF 913	5 000
Falcon Utility XE	82	XQO 505	6 000
International 4 x 4 Tip Truck	74	XQH 424	9 500
Ford Diesel Tractor 5000	77	XQC 140	12 000
<u>KALBARRI</u>			
Toyota Landcruiser	82	XQR 995	9 000
Toyota Landcruiser	81	XQM 700	7 500
Toyota Landcruiser	81	XQO 061	7 500
Ford Diesel 7854/N5 Tip Truck	69	XQX 039	5 000
Ford Tractor 6600	77	XQC 141	12 000
Galion Grader 503	74	UQP 850	8 000
Baravan Caravan	-	UQM 559	2 000
Fire Fighting Trailer	68	UQU 586	50
Bedford 4 x 4 R Series Fire Truck	63	UQE 923	4 000

MAKE AND TYPE	YEAR MANUF.	REG. NO.	CURRENT INSURED VALUE
<u>LEEWIN</u>			
Toyota Landcruiser	82	XQR 886	9 000
<u>MATILDA BAY</u>			
Chevrolet 5 Ton Tip Truck	77	XQE 622	6 000
Bolen Tractor	77	-	2 000
Trailer	-	UQU 579	40
<u>MILLSTREAM</u>			
Toyota Landcruiser	82	XQQ 674	9 000
<u>NAMBUNG</u>			
Toyota Landcruiser	82	XQS 094	9 000
Toyota Landcruiser	80	XQK 874	6 500
Bedford 5 Ton Tip Truck	68	UQX 037	2 500
John Deere Tractor	76	UQY 585	8 500
Baravan Caravan	74	UQW 560	1 000
Fire Fighting Trailer	68	UQU 585	50
Bedford 4 x 4 R Series Fire Truck	67	UQE 685	4 000
<u>PEMBERTON - WARREN</u>			
Toyota Landcruiser (P)	82	XQQ 362	9 000
Toyota Landcruiser (W)	80	XQL 963	6 500
International Tip Truck	70	XQA 836	2 500
Zeter Tractor 5745	76	XQA 845	5 000
Bedford 4 x 4 R Series Fire Truck	66	UQE 473	4 000
<u>PORONGURUP</u>			
Toyota Landcruiser	81	XQO 074	7 500
<u>SERPENTINE</u>			
Toyota Landcruiser	82	XQQ 360	9 000
Flemco Box Top Trailer	79	XQU 247	700

MAKE AND TYPE	YEAR MANUF.	REG. NO.	CURRENT INSURED VALUE
<u>STIRLING RANGE</u>			
Toyota Landcruiser	82	XQR 669	9 000
Toyota Landcruiser	81	XQO 073	7 500
Massey Ferguson Tractor	76	UQG 320	2 500
International Tip Truck C1600 4/5 Ton Trailer	70	XQS 563	2 000
Modern Caravan	64	UQU 581	20
	73	XQT 095	3 000
<u>STOKES</u>			
Toyota Landcruiser	82	XQR 887	9 000
Suzuki RV90B Motor Cycle	81	UQ 282	650
<u>TORNDIRRUP</u>			
Toyota Landcruiser	81	XQO 062	7 500
Loadstar Box Top Trailer	82	XQW 958	500
<u>WALPOLE NORMALUP</u>			
Toyota Landcruiser	82	XQQ 392	9 000
Toyota Landcruiser	82	XQQ 670	9 000
Toyota Landcruiser	80	XQL 962	6 500
International 4 x 4 Tip Truck	70	XQD 593	8 000
Massey Ferguson Tractor 135	65	UQG 303	1 000
Boat Trailer	77	UQW 967	700
Trailer	69	UQT 189	30
<u>WALYUNGA</u>			
Toyota Landcruiser	82	XQQ 673	9 000
Toyota Landcruiser	79	XQI 164	6 000
Zetor 8011 Diesel Tractor	75	UnLicensed	10 000
Trailer	69	UQU 588	50
Trailer	58	UQW 332	20
<u>WATHEROO</u>			
Toyota Landcruiser	83	XQY 163	11 000

<u>MAKE AND TYPE</u>	<u>YEAR MANUF.</u>	<u>REG. NO.</u>	<u>CURRENT INSURED VALUE</u>
<u>WILLIAM BAY</u>			
Toyota Landcruiser	81	XQN 796	7 500
<u>YALGORUP</u>			
Toyota Landcruiser	80	XQL 818	6 500
Trailer	72	UQT 913	80
Fire Trailer Custom Made	82	XQW 964	500
<u>YALLINGUP</u>			
Toyota Landcruiser	82	XQP 712	9 000
Suzuki Motor Cycle TS185	76	UQ 194	450
<u>YANCHEP</u>			
Falcon Utility XE	82	XQO 504	6 000
Toyota Landcruiser	82	XQQ 671	9 000
Toyota Landcruiser	79	XQI 247	5 500
Toyota Landcruiser	79	XQI 245	6 000
Toyota Landcruiser	76	XQY 812	3 500
Toyota Landcruiser	76	UQZ 247	3 500
Holden Utility	77	XQA 947	3 000
Bedford Tip Truck	70	XQP 197	3 000
Bedford 4 x 4 Tip Truck	69	XQA 803	3 500
Massey Ferguson Tractor 35X	63	UQG 318	2 000
Massey Ferguson Front End Loader 275	82	XQP 891	21 000
Bolen Tractor HT20	77	-	2 000
Tip Trailer	77	Unlicensed	2 000
<u>MOBILE RANGERS</u>			
1. Toyota Landcruiser	81	XQM 698	8 000
2. Toyota Landcruiser	83	XQY 166	12 000
3. Toyota Landcruiser	83	XQY 177	12 000
4. Toyota Landcruiser	80	XQL 828	7 000
5. Toyota Landcruiser	82	XQR 915	9 000
6. Toyota Landcruiser	83	XQY 193	12 000
7. Toyota Landcruiser	81	XQM 699	8 000
8. Toyota Landcruiser	81	XQM 907	8 000
9. Toyota Landcruiser	82	XQQ 361	9 000
10. Toyota Landcruiser	82	XQR 914	9 000

MAKE AND TYPE	YEAR MANUF.	REG. NO.	CURRENT INSURED VALUE
<u>MOBILE RANGERS.....Contd.</u>			
11. Toyota Landcruiser	82	XQR 671	9 000
12. Toyota Landcruiser	81	XQO 209	8 000
13. Toyota Landcruiser	82	XQP 702	9 000
14. Nissan Patrol	84	XQZ 023	11 000
<u>HEAD OFFICE</u>			
Holden Commodore	79	XQJ 562	5 000
Subaru 4 WD Station Wagon	82	XQJ 057	6 500
Toyota Landcruiser SWB H/Top	79	XQI 244	6 000
Toyota Landcruiser SWB H/Top	79	XQJ 505	6 000
Holden Shuttle Van WFR 8DB06	83	XQX 856	6 500
<u>ALBANY - SUPERVISOR SOUTH</u>			
Subaru 4 x 4 Station Wagon	81	XQJ 025	5 500
Subaru 4 x 4 Station Wagon	84	XQY 977	8 000
<u>KARRATHA - SUPERVISOR NORTH</u>			
Datsun Patrol 4 WD Station Wagon	83	XQQ 308	14 000
<u>GARDEN ISLAND</u>			
Toyota Hilux 4 Cyl 4 WD	82	XQR 962	7 500
Honda Motor Cycle ACT110A	80	Unlicensed	500
			<u>\$791 420</u>



## PERSONNEL

### STAFF ESTABLISHMENT

#### Professional and Technical -

Director	1
Regional Superintendents	2
Ecologist	1
Biologist (Planning)	1
Fire Management Officer	1
Supervisors	3
Drafting Assistant	1
	<hr/>
	10
	<hr/>

#### Administrative and Clerical -

Secretary	1
Publications & Publicity Officer	1
Senior Clerk	1
Training & Research officer	1
Clerks	4
Typists	3
	<hr/>
	11
	<hr/>

#### Rangers and Ancillary Staff -

Rangers	62
Mobile Rangers	14
Female Office Assistants	2
Mechanic	1
	<hr/>
	79
	<hr/>
Vacant	2

### HONORARY RANGERS

The following Honorary Rangers have been appointed under the National Parks Authority Act. Their help in assisting the patrol and supervision of the national parks concerned is greatly appreciated.

B.F. & A.R. Trigwell	- Haddleton Reserve
E. Chapman	Haddleton Reserve
C.G. Somner	Haddleton Reserve
Dr. D.L. Serventy	Gooseberry Hill
A.M. & T.R. Walters	Wolf Creek
N. Walmsley	
C.F.H. Jenkins	
F. G. Smith	
P. Congreve	
A. Handy	Eucla
J. Boyd	Walpole-Nornalup
C.W. Russell	Donnelly River
C.C. Done	Hidden Valley

## TRAINING

The training of National Parks Rangers has been a subject of much consideration this year. Training procedures and opportunities are being reviewed and it is anticipated that a much fuller, more comprehensive programme will be made available to Rangers within the framework of the proposed new Department of Conservation and Land Management.

Investigation has commenced into providing a formal course of study through an external college of education, though this will take some time to establish. Meanwhile, in-service and inter-departmental opportunities have been pursued.

In September 1983, the Inaugural Southern Region Seminar was held in Albany. The theme of this seminar was Management of the Natural Resource and its Use by People. Syndicate exercises enabled Rangers to experience management problems first hand and propose planning strategies to resolve them.

Training in fire protection and management has taken a high priority with many persons attending the Bush Fires Board Fire Protection Courses and Fire Weather Officer's Courses. A number of persons also attended regional one-day seminars conducted by the Bush Fires Board, and the staff at John Forrest National Park were instructed in Fuel Assessment and Burn Prescriptions.

Two Fire Competitions were held this year, one in Albany and one at Yanchep. These competitions prepare field staff for the coming fire season by testing vehicles and equipment for good maintenance and efficiency, and also testing operator's skills against limited time.

A number of Rangers gained inland coxswain's certificates and St. John's Ambulance First Aid Certificates.

Two persons from the Southern Region attended a Forests Department Field Ecology Course at the Perup Field Study Centre. Included in the course were trapping techniques, animal handling and the recording and analysis of data.

A Cliff Rescue Course was conducted at Kalbarri National Park in November 1983. Army personnel of the SAS Regiment instructed fifteen rangers and a number of volunteers in roping and rescue techniques and also in the planning and co-ordination of a rescue operation. A number of other smaller roping exercises have been conducted locally within National Parks around the State, and in collaboration with regional S.E.S. groups.

Instructors from the WA Board of Canoe Education conducted a 3½ day course for fourteen Rangers on the Avon River in Walyunga National Park. Course participants learned of safe boat handling in white water conditions, canoe safety, capsizing and deep water rescue.

A series of lectures were presented at Yanchep National Park each Wednesday for twenty weeks. A wide range of topics were dealt with such as soils, geography, natural history, ecology, environmental studies and management, landscape design, recreation management and general law. Lectures were given by officers from our own Department and many other various Government agencies.

The Australian National Parks and Wildlife Service provided a grant to allow our Department's Training and Research Officer to investigate Aboriginal Ranger Training Programmes in the Northern Territory and South Australia, during February 1984. As a result of these investigations, the National Parks Authority of Western Australia has submitted recommendations to State Cabinet that financial support be provided to conduct training for Aboriginal Rangers in the Northern Region of this State. This matter is still before Cabinet.

## **DRAWING OFFICE**

The Draughting Assistant whilst continuing to renovate the master plans and thematic map collection of the National Parks Authority was involved extensively in assisting the Publicity and Publications Officer in artwork and layout alterations to brochure reprints.

Work was commenced on a comprehensive fire map overlay system which will in time, provide an instant visual mosaic of dated fire patterns in all national parks.

Also when requested, input was afforded in designing various interpretive and direction signs for parks and reserves.

## LIBRARY

The Library continued to function in a professional manner during the year with use being made by other environmental bodies, National Parks Authority staff, visitors and students.

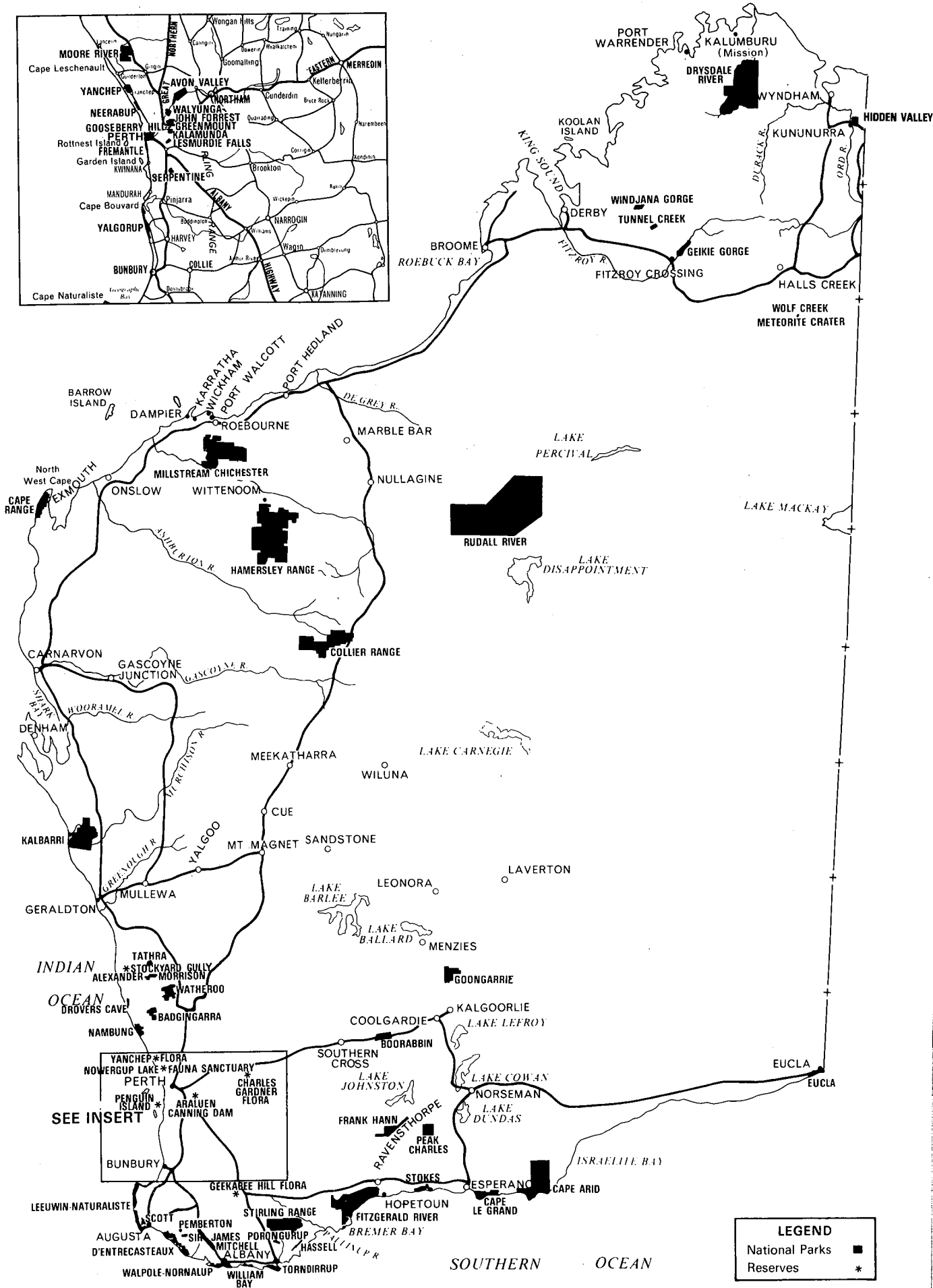
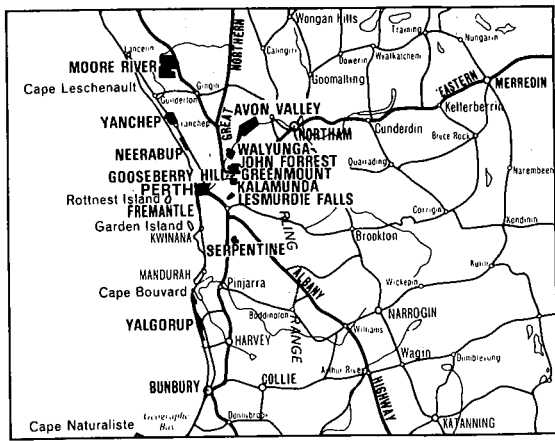
During 1983/84, the Authority Library continued as a member of the Inter-Library Loan System.

Whilst being under the control of the Publications and Publicity Officer, the day to day cataloguing and registration work has been done when possible, by the Director's Secretary. Unfortunately during periods of leave and through other work loads, the Library has remained unattended at times with no cataloguing and filing being carried out.

It is estimated that shortly the increase of accessions will require that the Library fixtures be extended.

A total of 512 new publications were accessed during the year including some 12 specially requested articles purchased. Publications purchased during the year were only a fraction of the number requested from Rangers requiring park library stock. Head Office was also meagerly increased compared to requests.

Students and outside institutions increased their use of the NPA library in their quest for national park and conservation knowledge.



LEGEND	
National Parks	■
Reserves	*