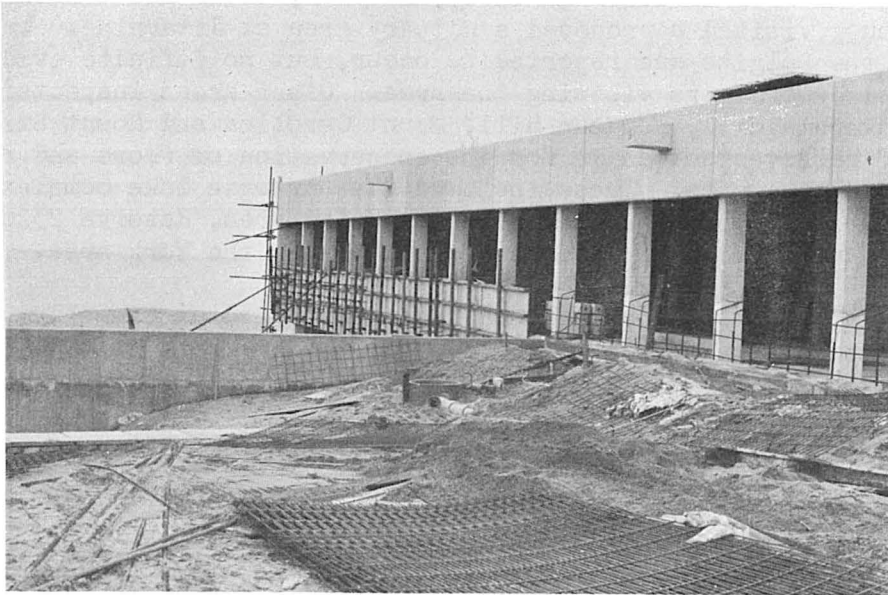


MARINE AQUARIUM

It is anticipated that the Aquarium being built at Waterman will be officially opened on or about October 25. If at all possible, this will permit most officers of the Department to attend as this will be the last day of the week during which the Annual Staff Conference is being held. The photo shown on this page was taken in the first week of June, and shows the southern aspect of the main wing.

ABORIGINAL ART AND ARTIFACTS

The Minister for Native Welfare has issued a circular to persons who, in the course of their activities might locate Aboriginal art and artifacts. He says that it has come to his attention that at times in the past, various items of Aboriginal manufacture, many of them sacred to their makers, have been destroyed or taken by persons who have come into possession of them by one means or another. Sometimes the destruction has been deliberate but more often it has been due to carelessness or to a lack of the realisation that these items were in fact the property of aboriginal Australians and even sacred to them.

It is the Minister's earnest desire to preserve any such item which has any sacred significance to living Aborigines and also any item which, though it might no longer be significant to Aborigines alive today, is still of value for preservation and research purposes in the State Museum. If any such articles are discovered, please leave them undisturbed and inform the nearest office of the Department of Native Welfare.