

Dynamic Stability of Coral Reefs on the West Australian Coast

Conrad W. Speed^{1*}, Russ C. Babcock², Kevin P. Bancroft¹, Lynnath E. Beckley³, Lynda M. Bellchambers⁴, Martial Depczynski⁵, Stuart N. Field^{1,6}, Kim J. Friedman^{1,6}, James P. Gilmour⁵, Jean-Paul A. Hobbs^{6,7}, Halina T. Kobryn³, James A. Y. Moore¹, Christopher D. Nutt¹, George Shedrawi¹, Damian P. Thomson², Shaun K. Wilson^{1,6}

1 Science Division, Department of Environment and Conservation, Marine Science Program, Kensington, Western Australia, Australia, **2** Commonwealth Scientific and Industrial Research Organisation, Marine and Atmospheric Research, Wembley, Western Australia, Australia, **3** School of Veterinary and Life Sciences, Murdoch University, Murdoch, Western Australia, Australia, **4** Biodiversity and Biosecurity Branch, Department of Fisheries Western Australia, Hillarys, Western Australia, Australia, **5** Australian Institute of Marine Science, The UWA Oceans Institute, Crawley, Western Australia, Australia, **6** The UWA Oceans Institute, Crawley, Western Australia, Australia, **7** The School of Plant Biology, University of Western Australia, Crawley, Australia

Abstract

Monitoring changes in coral cover and composition through space and time can provide insights to reef health and assist the focus of management and conservation efforts. We used a meta-analytical approach to assess coral cover data across latitudes 10–35°S along the west Australian coast, including 25 years of data from the Ningaloo region. Current estimates of coral cover ranged between 3 and 44% in coral habitats. Coral communities in the northern regions were dominated by corals from the families Acroporidae and Poritidae, which became less common at higher latitudes. At Ningaloo Reef coral cover has remained relatively stable through time (~28%), although north-eastern and southern areas have experienced significant declines in overall cover. These declines are likely related to periodic disturbances such as cyclones and thermal anomalies, which were particularly noticeable around 1998/1999 and 2010/2011. Linear mixed effects models (LME) suggest latitude explains 10% of the deviance in coral cover through time at Ningaloo. Acroporidae has decreased in abundance relative to other common families at Ningaloo in the south, which might be related to persistence of more thermally and mechanically tolerant families. We identify regions where quantitative time-series data on coral cover and composition are lacking, particularly in north-western Australia. Standardising routine monitoring methods used by management and research agencies at these, and other locations, would allow a more robust assessment of coral condition and a better basis for conservation of coral reefs.

Citation: Speed CW, Babcock RC, Bancroft KP, Beckley LE, Bellchambers LM, et al. (2013) Dynamic Stability of Coral Reefs on the West Australian Coast. *PLoS ONE* 8(7): e69863. doi:10.1371/journal.pone.0069863

Editor: Inés Álvarez, University of Vigo, Spain

Received: February 13, 2013; **Accepted:** June 12, 2013; **Published:** July 29, 2013

Copyright: © 2013 Speed et al. This is an open-access article distributed under the terms of the Creative Commons Attribution License, which permits unrestricted use, distribution, and reproduction in any medium, provided the original author and source are credited.

Funding: Funding for this project was provided by the West Australian Department of Environment and Conservation. The funders had no role in study design, data collection and analysis, decision to publish, or preparation of the manuscript.

Competing Interests: The authors have declared that no competing interests exist.

* E-mail: Conrad.speed@gmail.com

Introduction

Effective management and conservation of any natural resource relies on an assessment of its current status and how it changes spatially and temporally. A common approach to monitoring the health of natural resources is to adopt an indicator that will respond to disturbance, establish baselines and assess changes through time, all of which provide an impetus for management action. On coral reefs, commonly used indicators of health are: coral cover [1,2,3,4], reef fish or shark abundance [5], herbivory [6], coral recruitment [7], or a combination of multiple resources [8,9,10]. Establishing a baseline is essential for monitoring programs [11], particularly in areas where impacts have already occurred and caused a shift in communities [12]. However, long-term (multi-decadal) time-series datasets, which allow meaningful ecosystem-wide assessments, rarely exist over wide spatial scales (100 s km). One method that has been used to overcome sporadic and disconnected data collection is meta-analysis [1,2,13,14,15]. This approach allows the construction of datasets over a wide

spatial and temporal range whilst assessing congruence of patterns discerned from different studies.

Hard coral cover is the most widely used indicator of coral reef condition, as skeletal accretion by scleractinian corals forms the basis of all tropical coral reefs and provides habitat and food resources for a range of vertebrate and invertebrate fauna. Several broad-scale studies have documented a rapid decline in coral cover [13,14,16], as well as studies focusing on the Indo-Pacific region [e.g., 1,2,4,17]. Large-scale decline in coral cover can be related to both natural events (e.g., storms, disease, recruitment failure), and human activities that induce overexploitation of resources, degraded water quality, and climate change [11,18,19].

Changes in coral cover can document reef decline or recovery over large temporal and spatial scales [3,17], although, if used alone, it can mask shifts in community composition [11]. In addition to global declines in coral cover, community composition also appears to be changing due to taxonomic differences in their susceptibilities to the frequency and severity of impacts [20,21]. In some instances, impacts have caused large shifts away from the

typical Acroporidae-dominated community composition [22,23]. Shifts in community composition could potentially have profound effects on associated fish [24,25] and invertebrate species [26] that rely on specific coral species or morphologies (i.e., branching, massive, tabulate). Considerable reductions in Acroporidae assemblages are well known in the Caribbean [27], and there are also examples of similar community shifts in coral cover in the Indian Ocean [10,28,29].

Research in the Indian Ocean has mainly focused on the western and central areas where changes in live coral cover and community composition have been attributed to coral bleaching [2,30,31]. However, relatively little research has been published on the community composition and coral cover on reefs in the South Eastern Indian Ocean [32,33]. The unique southward flowing Leeuwin Current dominates the oceanography of the West Australian (WA) coastline [34], providing suitable hydrographical conditions for extensive coral reef growth [35]. Moreover, this coastline is an area of high endemism [36] and includes two World Heritage Areas, Ningaloo Reef and Shark Bay.

Diversity of coral communities on the south-eastern seaboard of the Indian Ocean has been described [37,38,39,40], however, there has been no synthesis of quantitative data that examines cover and composition on a broad scale. Much of the available information focuses on Ningaloo Reef due to the uniqueness and extent of this reef system [39], a recent surge in targeted State Government funding, as well as its accessibility and exposure to tourism [41,42], which has generated the most detailed and spatially-explicit data sets on coral cover in WA. Understanding long-term trends in coral communities at Ningaloo and assessing spatial variance along the coast are essential if we are to assess the effects of local-scale disturbances and management relative to global issues such as climate change.

Increasing industrial and residential development pressure on the north-west coast of Australia, as well as recent extreme climate events [e.g., 43,44,45,46,47] have increased the urgency to obtain synoptic and historical perspectives on coral cover in this region. In our study, we examined spatial coral cover for the west Australian coast and offshore territories, which make up much of the south eastern seaboard of the Indian Ocean, and focused our temporal component on Ningaloo Reef. Specifically, we aimed to; i) describe the spatial distribution in coral cover and composition for West Australia and offshore territories to determine reef condition; ii) identify gaps in knowledge of coral reef areas to help direct future research; iii) determine long-term (25 yr) spatial and temporal patterns in coral communities at Ningaloo Reef; and iv) assess environmental factors impacting on coral cover at Ningaloo, which provides an indication of reef stability and condition through time.

Materials and Methods

Data Sourcing & Filtering

There were three data sources considered for inclusion in our study: 1) peer-reviewed literature (journal articles), 2) grey literature (reports), and 3) unpublished data that were collected for research purposes or environmental monitoring programs (Fig. 1). Studies that provided an estimate of hard coral cover and composition from sites off the coast of WA were included in our database. Studies were included in our database provided they also included other metadata including depth (or depth range), habitat type(s) surveyed, and collection method. Data collected from *in-situ* monitoring were used, as opposed to data gathered from air-borne or satellite remote sensing to avoid error associated with differences in spatial resolution. Data collection methods included

still photography, video and *in-situ* visual estimates from transects, quadrats, manta-tows, towed video, and Autonomous Underwater Vehicles. Although there are no studies that assess compatibility of coral community estimates from all these techniques, comparisons of two or more of these methods indicate estimates of percent coral cover and broad functional/taxonomic groups are comparable [13,56,57,58]. We were primarily interested in coral cover of shallow coastal and offshore areas due to availability of data, and increased vulnerability to prominent natural and anthropogenic impacts [59]. We therefore restricted data collection to surveys that were done at depths ≤ 20 m, with the majority of data collected at average depths of ≤ 10 m ($\sim 80\%$ of surveys). This also reduced potentially confounding results of coral cover patterns due to varying depth gradients. Surveys included were also generally restricted to subtidal zones, although intertidal exceptions were in the Kimberley region, where tidal amplitudes can be up to 10 m [60]. A complete list of studies and sources from which data were derived is included in Table S1.

For assessing the impacts of disturbances on coral cover at Ningaloo Reef, cyclone frequency and intensity information were acquired from the Australian Bureau of Meteorology (BOM) <http://www.bom.gov.au/cyclone/history/tracks/index.shtml>. Hourly data taken from when cyclones were within a 200 km radius of Ningaloo Reef (Coral Bay – used as a center point) were used to estimate average intensity and frequency of cyclones in the region from 1987 to 2010. Cyclone intensity is measured from the center of the cyclone and recorded in hectopascals (hPa).

Water temperature was derived by applying a linear model to compare sea surface (SST) temperature from the NOAA Virtual Station at Ningaloo (http://coralreefwatch.noaa.gov/satellite/vs/index.html?lat=-20&lng=128&zoom_level=4) with *in-situ* water temperature measured at Point Murat. The model was then used to adjust historic temperature estimates derived by satellite (Baldock et al. unpublished data). We considered this to be an important correction of historical satellite-derived SST estimates, as previous estimates from Western Australia have often been shown to be erroneous by up to 2°C [61,62].

Study Area

The 12,500 km coastline of WA spans latitudes from $13^{\circ} 30' \text{ S}$ to $35^{\circ} 08' \text{ S}$ (Offshore territories $12^{\circ} - 10^{\circ} \text{ S}$) (Fig. 2a), and includes a diverse range of coral habitats such as fringing reefs, coral atolls, and reef plateaux [37]. Many of the coral reef systems along the WA coast are influenced by the Leeuwin Current, which is a southward flowing, narrow (< 200 km) boundary current of warm water with low salinity and low nutrients [34]. The coastal and marine environments in Australia are currently classified into bioregions under the Integrated Marine and Coastal Regionalisation of Australia (IMCRA), which have been established from ecological information for management and planning purposes [48].

Information from coral surveys along the entire west Australian coast, and associated territories, were considered for analyses, with a more detailed focus directed on Ningaloo Reef ($21^{\circ} 51' \text{ S}$, $114^{\circ} 10' \text{ E} - 23^{\circ} 34' \text{ S}$, $113^{\circ} 43' \text{ E}$) due to the extent of unpublished data on coral communities from this reef system, in addition to several recently published sources of information [e.g., 49,50,51]. Ningaloo is Australia's largest fringing reef (~ 300 km) and the Ningaloo Marine Park, managed by the Department of Environment and Conservation (DEC), covers 263,343 ha of reef and associated habitats [52]. There are at least 217 species of hermatypic corals from 54 genera identified from Ningaloo Reef [37], of which the dominant family is Acroporidae [50].



PRISMA 2009 Flow Diagram

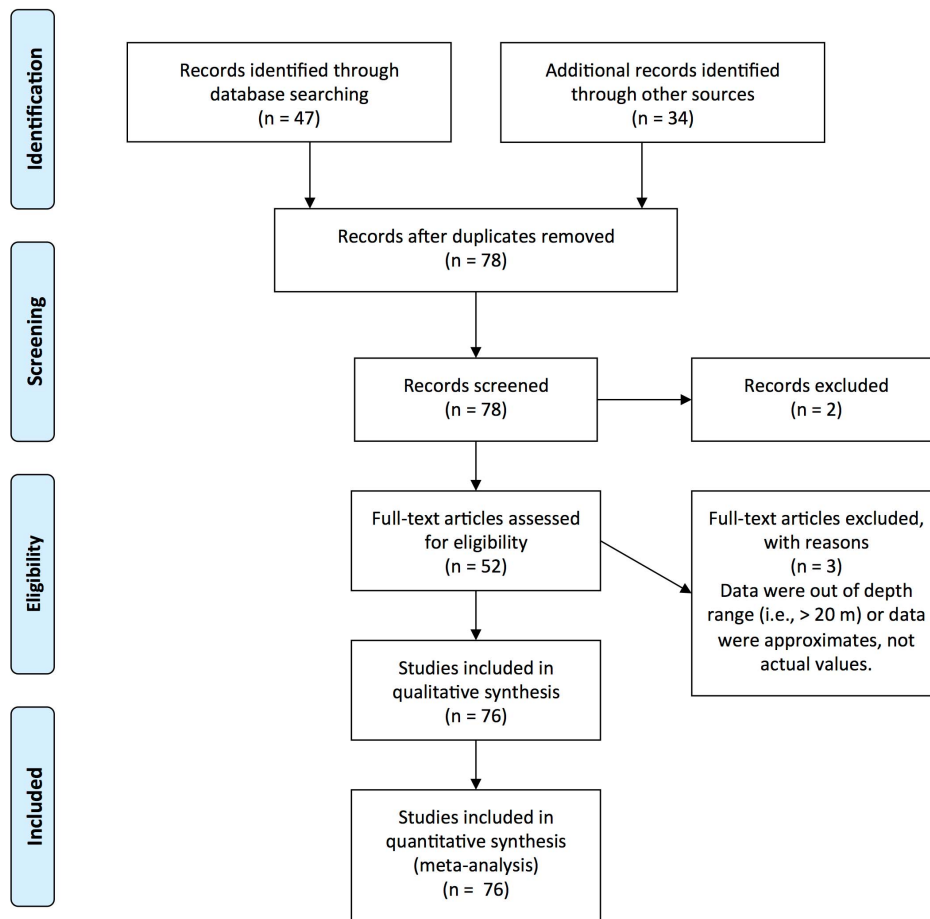


Figure 1. Literature identification and filtering for inclusion in meta-analysis of coral cover patterns in Western Australia.
doi:10.1371/journal.pone.0069863.g001

Four distinct sub-regions occur along Ningaloo Reef, which differ considerably in their geomorphology (Fig. 2b). The North-east sub-region is the Bundegi Reef complex ($21^{\circ} 49'S$, $114^{\circ} 10'E$), which is situated in the Exmouth Gulf and is a turbid low energy reef that is protected from the prevailing south-westerly winds and high wave energy to which the west side of the reef is exposed [53]. The North sub-region begins at Vlamingh Head ($21^{\circ} 48'S$, $114^{\circ} 6'E$) and runs south to Point Edgar ($22^{\circ} 21'S$, $113^{\circ} 23'E$). This sub-region is located near the shelf break and, unlike the other sub-regions, the 200 m depth contour is only 10 km offshore [54]. The Central sub-region begins at Point Cloates ($22^{\circ} 25'S$, $113^{\circ} 24'E$) and spans to Monck Head ($23^{\circ} 6'S$, $113^{\circ} 27'E$), and is uniquely characterised by both the increased width of its lagoon and a distinctive recirculation of minor currents and eddies around Point Cloates [55]. Beginning at Pelican Point ($23^{\circ} 19'S$, $113^{\circ} 46'E$) and extending southwards to the end of the Ningaloo Marine Park at Red Bluff ($24^{\circ} 3'S$, $113^{\circ} 24'E$), the South sub-region is differentiated by the absence of a lagoon where the reef flat extends from the reef crest to the beach and a broader, shallower offshore coastal shelf than the central and northern regions.

Data Analysis

West Australian coast and offshore territories. We organised survey data into nine regions that were based on the Integrated Marine and Coastal Regionalisation of Australia (IMCRA) bioregions (Commonwealth of Australia 2006) (Fig. 2a). Some regions were combined due to paucity of data and their similarity of coral community composition and known distributions [37]. We combined Central West Coast (CWC) and Leeuwin Naturaliste (LNE) bioregions, which we have labeled 'South-west inshore', the North-west Shelf (NWS) and Oceanic Shoals (OSS) bioregions, which we have labeled 'North offshore', and Australian Offshore Territories at Christmas Island and the Cocos (Keeling) Islands, which we have called 'Offshore territories'.

Only studies that surveyed areas of hard substrata that were suitable for coral growth and development were included in our analysis. Studies were also required to have area (m^2) sampled, which allowed us to weight studies. Where only transect length was provided, (e.g., line intercept transects), we assumed a 1 m width to get an approximation of area covered. We calculated transect area by multiplying transect length by width, which standardised area estimates across surveys. To provide a current estimate of

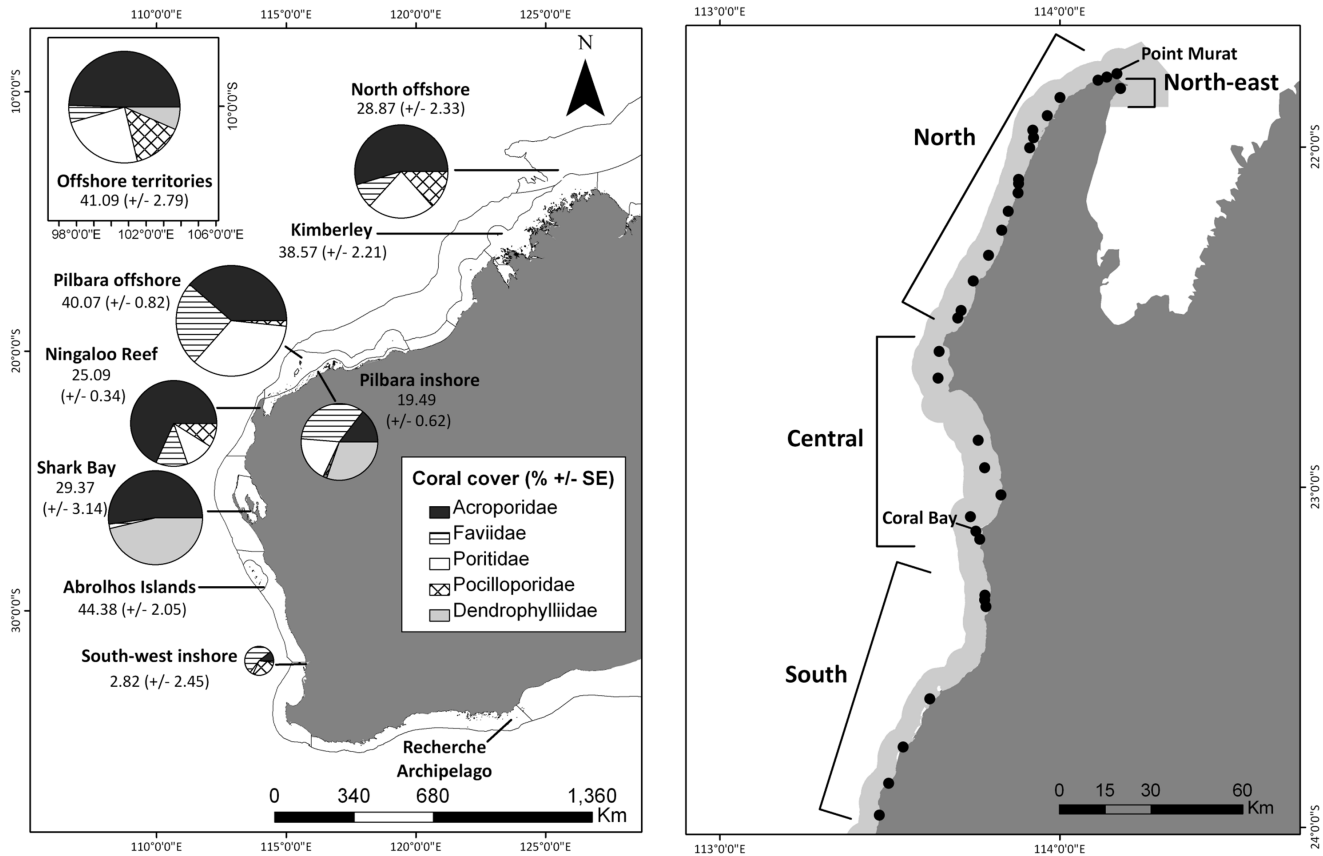


Figure 2. Map of study Western Australian coral monitoring sites showing: A) Dominant coral family composition for each sampling region and absolute coral cover (% ± SE), and B) Ningaloo Reef with survey sites (●), where light grey shadow area denotes Ningaloo Marine Park boundary. The size of pie charts is relative to overall percentage of total absolute coral cover. Pie charts represent contribution of dominant coral families relative to one another for each region. Lines connect pie charts with corresponding regions. Coral cover and composition for regions within Western Australia based on the last 10 years of data collected. doi:10.1371/journal.pone.0069863.g002

coral cover, we only used the past 10 years of data collected for each region. We estimated average coral cover per region using weighted arithmetic means [63], where area sampled (m²) was used to provide weightings for each study:

$$\bar{X}_w = \frac{\sum_{i=1}^n w_i x_i}{\sum_{i=1}^n w_i} \quad (1)$$

where w_i is the area sampled and x_i is coral cover. To calculate standard errors around each mean estimate, we used a bootstrap sampling with replacement [64]. Using weighted means places a greater emphasis on studies that have sampled larger areas, and has been used in previous meta-analyses to account for differences in effort among studies [65,66].

As not all studies collected coral community composition data, a subset of these studies (~56%) was used to estimate community composition of dominant families for each region (Acroporidae, Faviidae, Pocilloporidae, Poritidae, and Dendrophylliidae). We did not attempt a temporal comparison of either coral cover or coral composition along the entire western coast of Australia due to sporadic and unbalanced sampling effort for most regions.

Ningaloo Reef. Ningaloo Reef was the most suitable region for assessing spatial and temporal dynamics of coral cover and composition due to the presence of established monitoring sites, which have been repeatedly surveyed. Surveys span a 25-year

period between 1987 and 2012. We grouped data from Ningaloo into four sub-regions (North-east, North, Central, and South, Fig. 2b) because of their well-documented relevance to hydrographic and bio-geographical features [e.g., 50,54,55].

We estimated average coral cover per year for Ningaloo as a whole and for each sub-region using weighted arithmetic means [63], where area sampled (m²) was used to provide weighting for each study (equation 1). A subset (~47%) of the Ningaloo data was suitable for assessing patterns in community composition. Average annual percent coral cover was calculated for four common families of corals (Acroporidae, Faviidae, Pocilloporidae, and Poritidae). Due to the reduced size of the data set, data were grouped into time periods of 5-year spans between 1990 and 2012, the last time period (2010–2012) consisting of only 3 years. Five-year spans were determined to have sufficient temporal resolution to establish major changes to total coral community composition [e.g., 3].

We used a square root transformation to ensure data fitted a Gaussian distribution and then applied linear mixed effects models (LME) [67] to assess the strength of the relationship between coral cover (unweighted estimates – full dataset) through time at Ningaloo with latitude, habitat type, and size of area surveyed. A mixed model approach was adopted as it allowed us to explore the potential influences of multiple environmental variables, while including sampling site as a random effect. Non-independence of data (i.e., spatial and temporal autocorrelation) is a potential

source of error in meta-analytical studies, however, identifying which data are auto-correlated from published studies is generally impossible, as raw data are rarely available [15]. We tested for autocorrelation in our working dataset of summarised values, and found that temporal auto-correlation was present (Figure S1). A mixed-model approach allowed us to include a correlation structure to account for temporal non-independence. Specific depth values at the site level were often not provided in studies we reviewed (rather a depth range), which precluded the inclusion of this variable in models. We were also unable to include cyclone intensity and water temperature as explanatory variables due to lack of spatial resolution in the datasets. We classified habitat types as ‘forereef’ (includes reef slope, ~8.6% of samples), ‘backreef’ (~75%), ‘lagoon’ (includes patch reefs, ~9%), and ‘reef flat’ (~6.8%).

Temporal trends in coral cover (yearly weighted averages) at Ningaloo Reef (all sub-regions combined) and for each sub-region independently were examined using linear and non-linear models (4th order polynomial and natural cubic splines). We selected these models because of uncertainty whether coral cover followed linear or non-linear trends. We ranked and weighted all models using Akaike’s Information Criterion corrected for small sample sizes (AIC_c), associated weights ($wAIC_c$), and percent deviance explained (%DE) [68]. All analyses were carried out in program R [69] using packages ‘plyr’, ‘boot’, and ‘nlme’.

Results

West Australian Coast and Offshore Territories

Data from 121 surveys were obtained between 1980 and 2012. These surveys represent data collected in 76 separate studies, of which 35 (46%) were done at Ningaloo Reef (Table 1 and Table S1). Both Ningaloo Reef and North offshore regions had the largest areas surveyed (>250, 000 m² each), while Shark Bay had the lowest (1,800 m²).

The four regions with the highest overall mean coral cover were the Abrolhos Islands, Offshore territories, Pilbara offshore, and the Kimberley (>38% cover) (Fig. 2a). Corals from the family Acroporidae were prominent in most regions, and accounted for 3–40% of corals present (Fig. 2a). The greatest contribution of Acroporidae was found in communities from the most northern extent of our study area, the Offshore Territories (19.2% ±1.5 SE), and the lowest in the most southern part of our study area

around South-west inshore (1.1% ±0.4 SE). Acroporidae was also quite common within Shark Bay (15.1% ±3.5 SE). Poritidae showed a similar pattern to Acroporidae in that there was a higher relative contribution in the North offshore region (9.4% ±0.7 SE) than the South-west inshore region (0.3% ±0.2 SE). There was some evidence to suggest that both Acroporidae and Poritidae were less abundant in cover with increasing latitude, albeit non-significant relationships (Adj. $R^2 = 0.42$, $p = 0.067$ and Adj. $R^2 = 0.45$, $p = 0.057$, respectively) (Table S2). Faviidae was found throughout all regions, ranging from 0.5% (±0.1 SE) in Shark Bay to 17.5% (±0.5 SE) at Pilbara inshore. Corals from the family Dendrophyllidae were present throughout most of the regions, although they were most abundant within the inshore in the Pilbara (15.7% ±0.5 SE) and in the more sheltered embayments of the Shark Bay region (13.4% ±0.5 SE).

Despite high coral cover, gaps in coral family level data were identified for the Abrolhos Islands and the Kimberley. Indeed, the Kimberley had the least surveys conducted ($n = 3$), which was followed by Offshore territories, Pilbara offshore and inshore, and Shark Bay ($n = 4$ each) (Table 1). No quantitative data were available on coral cover or community composition in the far south-east of West Australia, in the Recherche Archipelago.

Ningaloo Reef

Total average coral cover across Ningaloo Reef for the entire 25 year period (1987–2012) was 28.1% (±2.1 SE). While there was variation in coral cover through time with cover dropping below 20% during certain periods, overall coral cover has remained stable (Fig. 3a). A linear model provided the best fit for Ningaloo overall ($wAIC_c = 0.45$), although this model did not differ to the intercept only model (null model), suggesting no strong linear increases or declines between 1987 and 2012 (Table 2). Overall variation in coral cover at Ningaloo was best explained by latitude (10%) with comparatively little variation explained by habitat type, or survey area (Table 3). The period with consecutive years where coral cover was ≤20% was around 1998/1999, which coincided with both a peak in average water temperatures (Fig. 3b) and a severe cyclone (Fig. 3c).

Sub-regions within Ningaloo Reef showed contrasting patterns in coral cover through time, with increasing coral cover in the North sub-region (Fig. 4a), and declines in the North-east and South sub-regions (Fig. 4b & d). In the Central sub-region the linear model had similar AIC_c values to the intercept only model,

Table 1. Summary of data sourced for meta-analysis in our study.

WA region	Survey period	Number of surveys	Area surveyed (m ²)	Journal articles	Reports	Unpublished data	Total studies
North offshore	1993–2010	32	273,985	3	9	1	13
Offshore territories	2008–2012	4	13,500			1	1
Kimberley	2007–2010	3	3,172	1	2		3
Pilbara offshore	2006–2011	4	16,250		1	1	2
Pilbara inshore	1985–2009	11	15,315		10		10
Ningaloo Reef	1980–2012	45	258,345	5	16	14	35
Shark Bay	1996–2011	4	1,800		1	1	2
Abrolhos	2004–2011	5	11,100	1	1	1	3
South-west inshore	1999–2011	13	54,145	1	3	3	7
Total		121	643,742	11	43	22	76

Note: Area surveyed might be inflated in regions where repeat surveys were done over time at fixed sampling sites.
doi:10.1371/journal.pone.0069863.t001

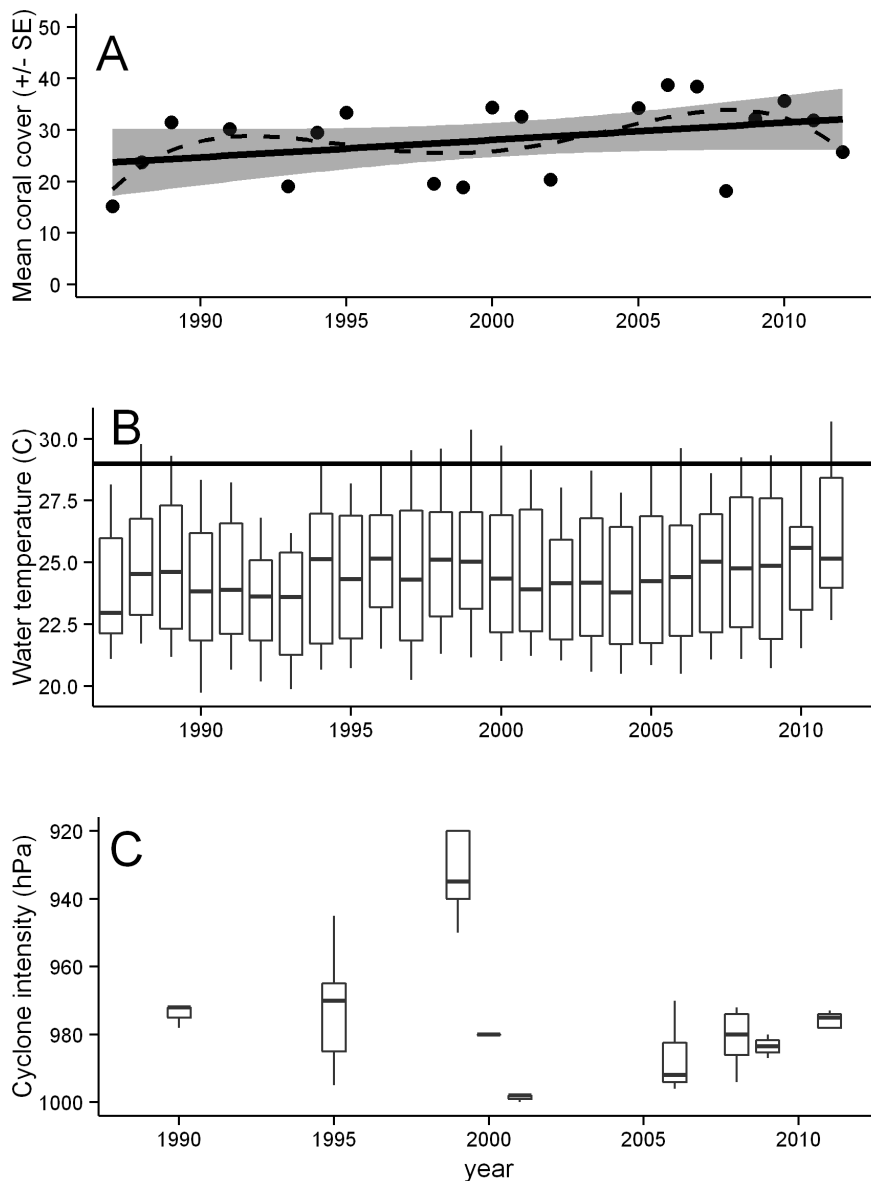


Figure 3. A) Coral cover at Ningaloo Reef between 1987 and 2010. Lines fitted using a linear regression (solid line with standard errors) and a 4th order polynomial regression (dashed line. B) Water temperature from Point Murat, at the northern end of Ningaloo Reef – thick black line represents approximate bleaching threshold for corals based on NOAA Coral Watch http://coralreefwatch.noaa.gov/satellite/vs/australia.html#Ningaloo_Australia. C) Cyclone frequency and intensity measured in Hectopascals at Ningaloo Reef. Each box represents central pressure measured for individual cyclones, except for 1995 (values averaged for two cyclones). Upper and lower whiskers in B and C represent the 1st and 3rd quartiles.

doi:10.1371/journal.pone.0069863.g003

suggesting no strong linear trends through time (Fig. 4c). However, in the North sub-region the linear model is the simplest and best explanatory model with a low AIC_c value and the most weight ($w_{AIC_c} = 0.44$). Linear and spline functions have similar AIC_c and w_{AIC_c} values when modeling data from the south sub-region (Table 2), although there is clearly more weight for non-linear relationships (splines) in the North-east ($w_{AIC_c} = 0.58$) sub-region.

All Ningaloo Reef sub-regions were dominated by corals from the family Acroporidae, which declined in relative composition in the South sub-region (Adj. $R^2 = 0.94$, $P = 0.02$) and the North-east sub-region, albeit a non-significant decrease (Adj. $R^2 = 0.70$, $P = 0.11$) (Fig. 5b & d and Table S3). Since 2005, there has been some evidence to suggest that relative contributions of other coral

families have increased, particularly in the Central sub-region (Fig. 5c).

Discussion

Distribution and coral community composition on reefs are a function of environmental gradients [70], which are partly shaped by natural and anthropogenic pressures [20]. We used a meta-analytical approach to quantify these broad-scale patterns in coral cover for the south-eastern seaboard of the Indian Ocean, with the intent of assessing previous impacts and establishing benchmarks to be used for conservation and management. We identified that tropical coral reef habitats (i.e., north of Shark Bay) had average coral cover that ranged between 19.5% and 41%, which is

Table 2. Model ranking results of relationship between coral cover over time for sub-regions at Ningaloo Reef.

Subregion	Model	df	-LL	AIC _c	wAIC _c	%DE
All subregions combined	Intercept only (cover ~1)	18	-67.8347	139.6694	0.3118	0.0000
	Spline (cover~ns(year,4)	14	-65.0919	142.1838	0.0887	2.0170
	Regression (cover ~year)	17	-66.4664	138.9328	0.4506	4.8072
	Polynomial (cover~poly(year,4))	14	-64.5737	141.1474	0.1489	4.0433
Central	Intercept only (cover ~1)	18	-71.2748	146.5495	0.3635	0.0000
	Spline (cover~ns(year,4)	14	-68.7149	149.4298	0.0861	25.6366
	Regression (cover ~ year)	17	-70.0061	146.0122	0.4756	3.3933
	Polynomial (cover~poly(year,4))	14	-68.8562	149.7124	0.0748	3.5916
North	Intercept only (cover ~1)	14	-58.8183	121.6366	0.0036	0.0000
	*Spline (cover~ns(year,4)	10	-50.4792	112.9585	0.2756	9.8881
	*Regression (cover ~ year)	13	-53.0023	112.0046	0.4440	14.1852
	*Polynomial (cover~poly(year,4))	10	-50.4748	112.9497	0.2768	14.1777
North-east	Intercept only (cover ~1)	10	-55.1855	114.3711	0.0049	0.0000
	*Spline (cover~ns(year,4)	6	-46.4170	104.8339	0.5803	8.5659
	*Regression (cover ~ year)	9	-50.4584	106.9168	0.2048	14.0473
	*Polynomial (cover~poly(year,4))	6	-47.4334	106.8669	0.2100	15.8892
South	Intercept only (cover ~1)	10	-51.7071	107.4142	0.0020	0.0000
	*Spline (cover~ns(year,4)	6	-42.1374	96.2748	0.5157	12.3751
	*Regression (cover ~ year)	9	-45.3083	96.6166	0.4347	13.9038
	Polynomial (cover~poly(year,4))	6	-44.5179	101.0357	0.0477	18.5075

For each of the models contrasted, degrees of freedom (df), maximum log-likelihood (-LL), AIC_c, AIC weight (wAIC_c), and the % deviation explained (%DE) are shown. Splines are natural cubic, and Polynomials are 4th order. Models in bold with * have significant relationships (<0.05). doi:10.1371/journal.pone.0069863.t002

comparable to other regions within the Indian Ocean [range 12%–42% 1] and [8] ~25–35%, as well as averages on the Great Barrier Reef (GBR) [22% - 29% 3,4]. In comparison, temperate reef systems, marginal reefs, and areas of solitary corals (i.e., south of Shark Bay) ranged in average coral cover between ~3% and 44%. This wide range in cover at higher latitudes reflects the patchy nature of coral communities in temperate environments. In the south-eastern Indian Ocean, corals in temperate waters are most prominent in areas more exposed to the warm waters of the Leeuwin current (e.g., reefs around the Abrolhos). Higher latitude regions generally also have coral communities of lower diversity

than tropical regions due to fewer species being adapted to cooler climates [71], although an examination of coral diversity was beyond the scope of our study.

We found that while there was no clear relationship between latitude and coral cover at the family level for WA, there were notable differences in relation to community composition in coastal regions. The families Acroporidae and Poritidae showed greater relative contributions in the tropical regions compared to areas south of Shark Bay (within South-west inshore region), although Acroporidae was also prominent at the Abrolhos Islands [72], reflecting the influence of the Leeuwin current on these offshore islands. Similar latitudinal patterns in Acroporidae and Poritidae have been observed on the Great Barrier Reef [73], and it has been suggested that the decrease in presence of massive Poritidae colonies at high latitudes might be due to reduced growth [74], and accretion [73], which are related to unfavourable lower water temperatures [75]. Fewer numbers of Acroporidae species at higher latitude reefs has previously been observed [e.g., 73,76,77], and might be linked to this family being less tolerant to environmental stressors in marginal conditions when compared to other families such as Faviidae [70]. Reef accretion decreases dramatically south of the Abrolhos Islands [78,79], which is similar to latitudes in South Africa (28° S), although these South African reefs are not true accretive reefs [80]. In comparison, reef development generally ceases around 24° S on the GBR [81].

Another notable distribution pattern along the WA coast was the prominence of members from the family Dendrophylliidae around the central WA inshore areas. In WA, this family was dominated by *Turbinaria* spp., and is distributed from the North offshore region to the Recherche Archipelago, which is located in the south-east of WA [37]. This genus is tolerant of inshore, turbid

Table 3. Results of the relationship between coral cover at Ningaloo Reef and explanatory variables using general linear mixed-effects model comparison based on Akaike’s information criterion (AIC_c) corrected for small sample sizes.

Model	df	-LL	AIC _c	wAIC _c	%DE
Intercept only (cover ~1)	4	-774.9794	1557.9587	0.0000	0.0000
Slope (year~cover)	23	-747.6121	1541.2243	0.0000	3.5314
Habitat (year~hab)	27	-736.8372	1527.6745	0.0000	4.9217
Area (year~cover+area)	24	-753.02	1554.0400	0.0000	2.8335
Latitude (year~cover+ lat)	57	-691.0784	1496.1568	0.9097	10.8262
All (year~cover+area+hab+lat)	62	-688.3889	1500.7778	0.0903	11.1733

All models include the random effect ‘sampling site’. For each of the models contrasted, maximum log-likelihood (-LL), AIC_c, AIC weight (wAIC_c), and the % deviation explained (%DE) are shown. doi:10.1371/journal.pone.0069863.t003

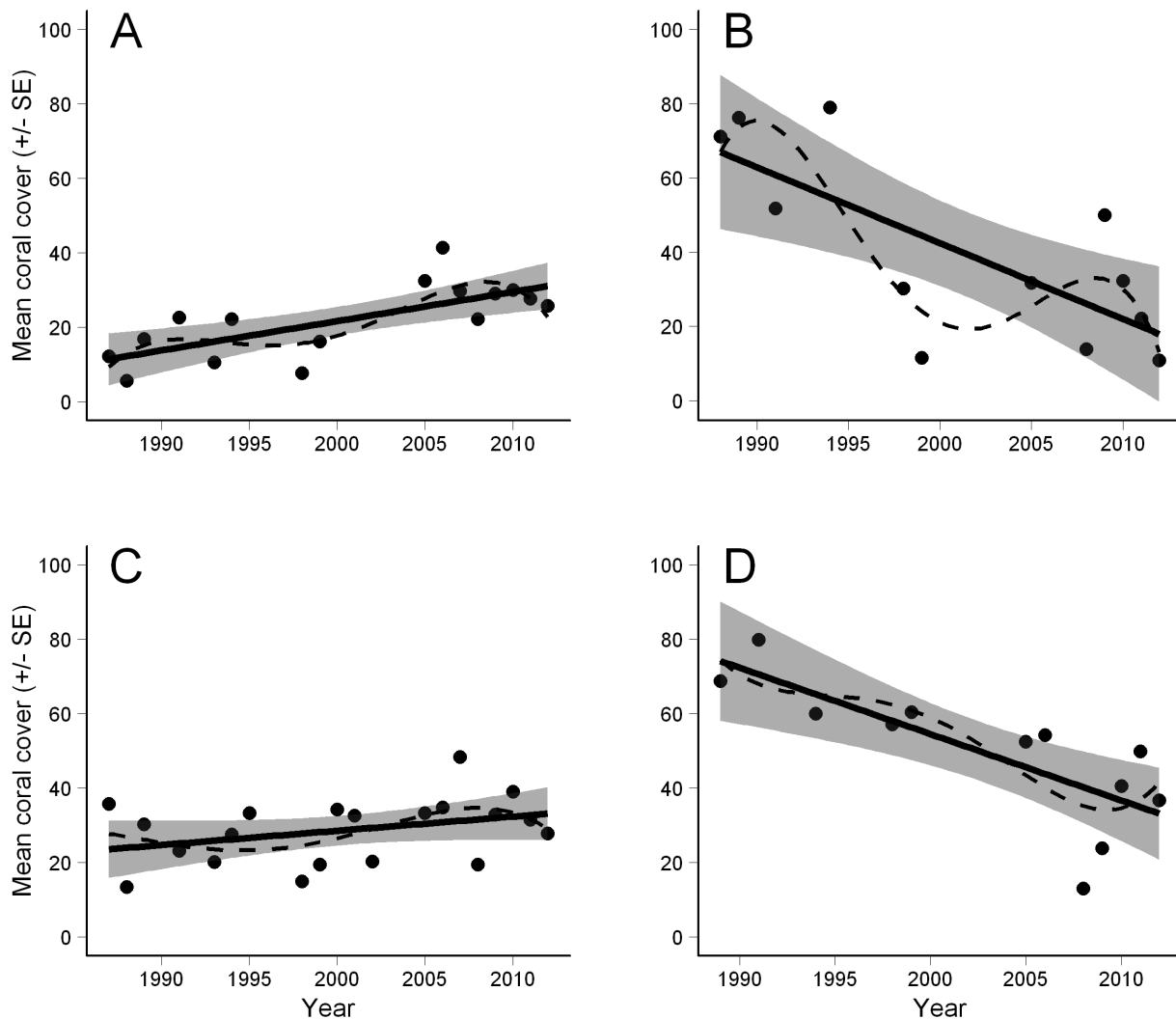


Figure 4. Coral cover through time at Ningaloo Reef weighted by area sampled (\pm SE). Lines fitted using a linear regression (solid line) and 4th order polynomial regression (dashed line). A) North, B) North-east, C) Central, and D) South. doi:10.1371/journal.pone.0069863.g004

environments [82] and its success is likely due to their high sediment tolerance and ability to use detritus as a source of nutrients [82,83]. This family of corals also appears well suited to higher latitude inshore areas on the GBR, which are characterised by cool, highly turbid waters [e.g., 73,81].

Despite fluctuations in total coral cover at Ningaloo Reef since the late 1980s, overall cover appears stable through time. This phenomenon has previously been described on the GBR as ‘dynamic stability’ [3]. A recent analysis of coral data from the GBR suggests coral cover is currently 14% and has declined, on average, by 0.5% per year between 1985 and 2012 [17]. Similarly, a meta-analysis of Indian Ocean reefs found that between 1968 and 2004 coral cover was decreasing at 1% per year [1] and in the Caribbean the decline is 1.5% per year [14] over a similar time period. The spatial scale of our study differs considerably to that of the aforementioned studies, so any comparisons of trends in coral cover should be made with caution. Indeed, comparing coral cover between, and within regions might often miss changes at the sub-regional level [2]. However, the maintenance of coral cover about a mean level of 28% over the past two and half decades when coral cover in other regions is declining is encouraging for

Ningaloo Reef. Fluctuations in coral cover, with no general declining trend at Ningaloo is reflective of a system that has little to no chronic anthropogenic pressure in the form of agricultural runoff or heavy commercial fishing over the past 25 years, especially when compared to other large reef systems like the GBR [84,85]. Indeed, a recent study at an isolated reef within the North offshore region found that recovery after natural disturbances (bleaching and cyclone disturbance) was rapid, and the authors suggested this was assisted by a lack of chronic anthropogenic pressures [86]. Despite the apparent stability in coral cover at Ningaloo Reef in recent times, we may actually be monitoring changes in an already significantly altered baseline, as has been observed through palaeoecological reconstructions on the GBR [87].

Peaks and troughs in coral cover at Ningaloo Reef were most prominent in the North-east region and can be related to acute environmental events. Exposure to prevailing wave energy in the North-east region is low and reefs in the region have no prominent reef front, so when cyclonic storms do come in close proximity to the reef the effects can be devastating [46]. A major trough in cover occurred around 1998/1999, which was evident across all

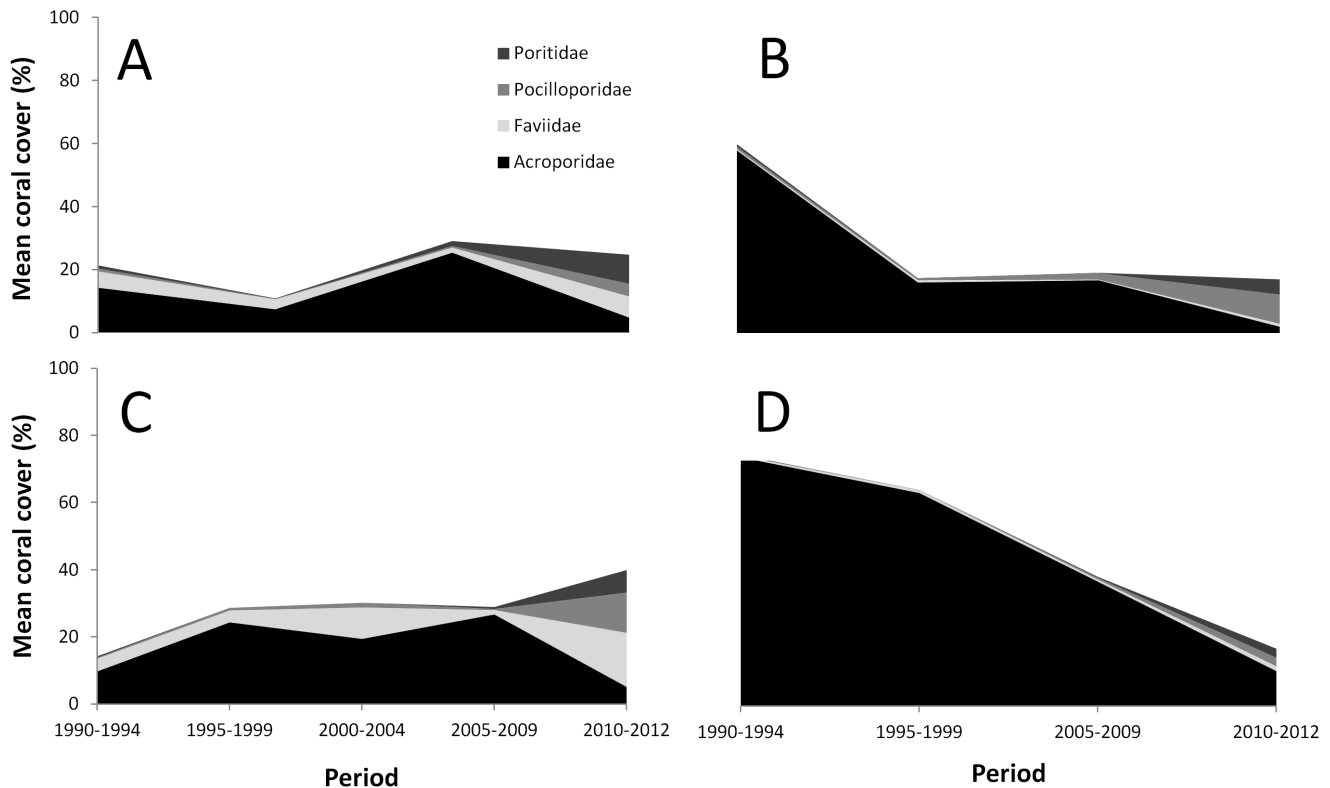


Figure 5. Coral community composition at Ningaloo Reef. A) North, B) North-east, C) Central, and D) South.
doi:10.1371/journal.pone.0069863.g005

Ningaloo sub-regions apart from the south. It is likely that multiple stressors affected coral cover during this period, with higher than average sea surface temperatures recorded across the Indian Ocean [30], and the occurrence of a destructive cyclone (“Vance”, category 4) crossing the Gulf of Exmouth in 1999. Although no bleaching data exist for Ningaloo during this period, wide spread bleaching was reported for the Indian Ocean [88]. Similarly, the combined effects of bleaching and cyclones have recently caused coral decline at Ningaloo, with up to 92% and 32% coral mortality on reefs in the North-east and South sub-regions, respectively [46,47]. However, it seems unlikely that the decline in the South sub-region of Ningaloo Reef is as dramatic as our results suggest, as it is probable that areas of particularly high cover were targeted by earlier studies in the 1980s. In other sub-regions, localised declines in coral cover have been attributed to acute pressures such as coral spawn slicks that have caused anoxic events at Coral Bay [89], as well as outbreaks of the corallivorous gastropod *Drupella* spp. [90]. Short-term and localised declines in coral at Ningaloo Reef are, however, not attributable to outbreaks of crown-of-thorns starfish, which are one of the main drivers of coral loss in other parts of the world [e.g., 3,17,91].

The recent reduction of Acroporidae corals at Ningaloo may relate to the occurrence of pressures that typically affect this family more than other families, such as cyclones [92], predation by *Drupella* [93], disease [49] and bleaching [31]. Acroporidae corals are generally quick to recover after disturbances, provided sufficient cover remains, due to rapid growth rates and recolonisation [94,95], although, if disturbances are frequent, other more robust families/morphologies might become relatively abundant. For example, in light of dramatic decreases in Acroporidae throughout the Caribbean since the 1980s, other more resilient species such as *Porites astreoides* have become increasingly abundant

[96,97,98]. Acroporidae corals are important habitat for juvenile fishes on reefs in WA [99], and declines in coral may influence the abundance of new recruits, with flow on effects for diversity and adult stocks [100,101]. Furthermore, a decline in coral might result in reduced structural complexity on reefs which can reduce the diversity of fish communities [102]. There are also a high number of coral-feeding fish that feed specifically on corals from the family Acroporidae which, if reduced, could affect abundance and physiology of these fishes [103]. Many species of reef associated invertebrates also have specific preferences for Acroporidae [26], which can play important roles in herbivory, nutrient cycling, and water quality regulation [104].

Latitude explained more of the variance in models than habitat type or the size of area surveyed at Ningaloo Reef. This is possibly due to the majority of sampling sites being in the backreef, whereas considerable differences in total cover would normally be expected among reef crests, slopes and flats [e.g., 105]. Other studies have also found no significant correlation in coral cover with latitude [70,73], which suggests that latitude by itself might not act as a good proxy for other variables such as water temperature, especially when currents transport warm waters to temperate latitudes. Overall, there was low support for models (~10% Deviance Explained), which also suggests that other factors might be more important in determining coral cover such as: depth, water temperature, current regimes, or disturbances. Although we limited data to sites that were <20m, it is possible that pooling sites across this depth range might have obscured fine-scale difference in coral cover [e.g., 106].

Reviewing the available literature and datasets on coral cover and community composition along the WA coast has provided a means of identifying gaps in current knowledge. At present, taxonomically detailed and quantitative information is required for

the Recherche Archipelago in the south, the Abrolhos Islands, and the Kimberley region in the north. Recent work in the Kimberley is starting to provide new information on species compositions for some reefs [107]. Understanding the current status of these communities and others is important for assessing shifts in distributions and understanding of resilience in light of predicted global changes in the marine environment [76,108]. Southern regions in WA are likely to become increasingly important in detecting trends, as range extensions might occur with climate change. Indeed, recent evidence suggests that range extensions are already occurring for marine organisms, increasing the tropicalisation of temperate communities in Australia [76,109,110]. Furthermore, there appears to be sufficient substrate to support a latitudinal shift of corals further south in WA [51]. The overall lack of historical information for the extreme northern areas of WA is mostly attributable to its remoteness, lack of accessibility and low levels of anthropogenic pressure in this region making reefs there a lower monitoring priority.

Our study has highlighted the importance of assessing natural resources at multiple spatial scales along the WA coast. At the regional scale, Ningaloo Reef coral communities appear to be relatively stable through time, although at the sub-regional scale there are declining trends in the North-east and South that may require greater scrutiny and monitoring. On the east coast of tropical Australia, coral cover on some sections of the GBR have remained stable, although there has been an overall decline in coral cover over the past several decades [17]. Ningaloo lacks some of the key factors that are thought to be responsible for this decline on the more heavily populated coast of the GBR, namely, large-scale terrestrial runoff and outbreaks of crown-of-thorns starfish. As such, Ningaloo and other coral reefs of northwest WA may play an instructive role in assessing the relative importance of local versus global effects on coral cover. Further research is required to provide a complete understanding of coral distribution and community composition along the west Australian coastline. Such information would provide a robust baseline for assessing broader-scale impacts of climate change or trends in coral cover. Congruence in routine monitoring methods, combined with more collaboration between management agencies, industry, academic and scientific institutions would also facilitate broad-scale assessments required for comprehensive understanding, allowing more effective management and conservation decisions to be made.

References

- Bruno JF, Selig ER (2007) Regional decline of coral cover in the Indo-Pacific: timing, extent, and subregional comparisons. *PLoS One* 2: e711.
- Ateweberhan M, McClanahan TR, Graham NAJ, Sheppard CRC (2011) Episodic heterogeneous decline and recovery of coral cover in the Indian Ocean. *Coral Reefs*: 1–14.
- Osborne K, Dolman AM, Burgess SC, Johns KA (2011) Disturbance and the dynamics of coral cover on the Great Barrier Reef (1995–2009). *PLoS One* 6: e17516.
- Sweatman H, Delean S, Syms C (2011) Assessing loss of coral cover on Australia's Great Barrier Reef over two decades, with implications for longer-term trends. *Coral Reefs* 30: 521–531.
- Friedlander AM, DeMartini EE (2002) Contrasts in density, size, and biomass of reef fishes between the northwestern and the main Hawaiian islands: the effects of fishing down apex predators. *Marine Ecology Progress Series* 230: 253–264.
- Aronson RB, Precht WF (2000) Herbivory and algal dynamics on the coral reef at Discovery Bay, Jamaica. *Limnology and Oceanography*: 251–255.
- Hughes TP, Baird AH, Dinsdale EA, Molschanivskyj N, Pratchett MS, et al. (1999) Patterns of recruitment and abundance of corals along the Great Barrier Reef. *Nature* 397: 59–63.
- McClanahan TR, Graham NAJ, MacNeil MA, Muthiga NA, Cinner JE, et al. (2011) Critical thresholds and tangible targets for ecosystem-based management of coral reef fisheries. *Proceedings of the National Academy of Sciences* 108: 17230–17233.
- Sandin SA, Smith JE, DeMartini EE, Dinsdale EA, Donner SD, et al. (2008) Baselines and degradation of coral reefs in the northern Line Islands. *PLoS One* 3: e1548.
- Wilson SK, Graham NAJ, Fisher R, Robinson J, Nash KL, et al. (In Press) Effect of macroalgal expansion and Marine Protected Areas on coral recovery following a climatic disturbance. *Conservation Biology*.
- Hughes TP, Graham NAJ, Jackson JBC, Mumby PJ, Steneck RS (2010) Rising to the challenge of sustaining coral reef resilience. *Trends in Ecology & Evolution* 25: 633–642.
- Knowlton N, Jackson JBC (2008) Shifting baselines, local impacts, and global change on coral reefs. *PLoS Biology* 6: e54.
- Côté IM, Gill JA, Gardner TA, Watkinson AR (2005) Measuring coral reef decline through meta-analyses. *Philosophical Transactions of the Royal Society B: Biological Sciences* 360: 385–395.
- Gardner TA, Côté IM, Gill JA, Grant A, Watkinson AR (2003) Long-term region-wide declines in Caribbean corals. *Science* 301: 958–960.
- Hughes TP, Baird AH, Dinsdale EA, Harriott VJ, Molschanivskyj NA, et al. (2002) Detecting regional variation using meta-analysis and large-scale sampling: latitudinal patterns in recruitment. *Ecology* 83: 436–451.
- Pandolfi JM, Bradbury RH, Sala E, Hughes TP, Bjorndal KA, et al. (2003) Global trajectories of the long-term decline of coral reef ecosystems. *Science* 301: 955–958.
- De'Ath G, Fabricius KE, Sweatman H, Puotinen M (2012) The 27-year decline of coral cover on the Great Barrier Reef and its causes. *Proceedings of the National Academy of Sciences*: 109: 1–5.

Supporting Information

Figure S1 Correlograms of time-series coral cover data for Ningaloo Reef: A) before inclusion of correlation structure in mixed-effects model, and B) after inclusion of correlation structure.
(DOCX)

Table S1 List of documents and sources where data were derived for meta-analysis. Note: Analysis of photo and video transects were done in the lab, as opposed to visual assessments, quadrats and *in-situ* point or line intercept methods, which were done in the field at the time of sampling.
(DOCX)

Table S2 Results of linear regression to assess relationship between latitude and coral cover by dominant families of corals off the Western Australian coast.
(DOCX)

Table S3 Results of linear regression to assess relationship between coral cover of dominant families through time at each sub-region of Ningaloo Reef.
(DOCX)

Table S4 Checklist of items done during the meta-analysis process.
(DOCX)

Acknowledgments

We acknowledge the hundreds of people who have been involved in data collection that enabled us to do this study. We thank the West Australian Department of Environment and Conservation (DEC) for funding this project. We are grateful to the following people for providing advice during the data sourcing phase of the project: A. Heyward, C. Simpson, J. Stoddart, J. Fromont, M. vanKeulen, T. Cooper, R. Stuart, G. Edgar, S. Lemmens, G. Sheill, A. McCarthy, S. Evans, B. Hatcher, and L. Collins. Data for the Kimberley region was in-part provided to us by INPEX.

Author Contributions

Conceived and designed the experiments: SKW CWS. Performed the experiments: CWS SKW. Analyzed the data: CWS SKW. Contributed reagents/materials/analysis tools: RCB KPB LMB MD SNF KJF JPG JPAH HTK JAYM GS DPT SKW. Wrote the paper: CWS RCB KPB LEB LMB MD SNF KJF JPG JPAH HTK JAYM CDN GS DPT SKW.

18. Hoegh-Guldberg O, Mumby PJ, Hooten AJ, Steneck RS, Greenfield P, et al. (2007) Coral reefs under rapid climate change and ocean acidification. *Science* 318: 1737–1742.
19. Hughes TP, Baird AH, Bellwood DR, Card M, Connolly SR, et al. (2003) Climate change, human impacts, and the resilience of coral reefs. *science* 301: 929–933.
20. Brown BE (1997) Disturbances to reefs in recent times. *Life and death of coral reefs*: 354–379. Springer.
21. Loya Y, Sakai K, Yamazato K, Nakano Y, Sambali H, et al. (2001) Coral bleaching: the winners and the losers. *Ecology Letters* 4: 122–131.
22. Aronson RB, Precht WF (2001) White-band disease and the changing face of Caribbean coral reefs. *Hydrobiologia* 460: 25–38.
23. Berumen ML, Pratchett MS (2006) Recovery without resilience: persistent disturbance and long-term shifts in the structure of fish and coral communities at Tiahura Reef, Moorea. *Coral Reefs* 25: 647–653.
24. Wilson SK, Graham NAJ, Pratchett MS, Jones GP, Polunin NVC (2006) Multiple disturbances and the global degradation of coral reefs: are reef fishes at risk or resilient? *Global Change Biology* 12: 2220–2234.
25. Pratchett MS, Munday P, Wilson SK (2008) Effects of climate-induced coral bleaching on coral-reef fishes. *Ecological and economic consequences*. *Oceanography and Marine Biology: Annual Review* 46: 251–296.
26. Stella JS, Pratchett MS, Hutchings PA, Jones GP (2011) Coral-associated invertebrates: diversity, ecological importance and vulnerability to disturbance. *Oceanography and Marine Biology* 49: 43–104.
27. Sheppard CRC, Davy SK, Pilling GM (2009) *The biology of coral reefs*: Oxford University Press.
28. McClanahan TR, Atewberhan M, Graham NAJ, Wilson SK, Sebastian CR, et al. (2007) Western Indian Ocean coral communities: bleaching responses and susceptibility to extinction. *Marine Ecology Progress Series* 337: 1–13.
29. Sheppard C, Al-Husiani M, Al-Jamali F, Al-Yamani F, Baldwin R, et al. (2010) The Gulf: a young sea in decline. *Marine Pollution Bulletin* 60: 13–38.
30. Goreau T, McClanahan T, Hayes R, Strong A (2000) Conservation of coral reefs after the 1998 global bleaching event. *Conservation Biology* 14: 5–15.
31. McClanahan TR, Baird AH, Marshall PA, Toscano MA (2004) Comparing bleaching and mortality responses of hard corals between southern Kenya and the Great Barrier Reef, Australia. *Marine Pollution Bulletin* 48: 327–335.
32. Fisher R, Radford BT, Knowlton N, Brainard RE, Michaelis FB, et al. (2010) Global mismatch between research effort and conservation needs of tropical coral reefs. *Conservation Letters* 4: 64–72.
33. Selig ER, Casey KS, Bruno JF (2012) Temperature-driven coral decline: the role of marine protected areas. *Global Change Biology*.
34. Cresswell GR, Golding T (1980) Observations of a south-flowing current in the southeastern Indian Ocean. *Deep Sea Research Part A Oceanographic Research Papers* 27: 449–466.
35. Veron JEN (2000) *Coral reefs of the World*. Townsville, Australia: Australian Institute of Marine Science.
36. Roberts CM, McClean CJ, Veron JEN, Hawkins JP, Allen GR, et al. (2002) Marine biodiversity hotspots and conservation priorities for tropical reefs. *Science* 295: 1280–1284.
37. Veron JEN, Marsh LM (1988) *Hermatypic corals of Western Australia: records and annotated species list*. Western Australian Museum.
38. Wilson B, Blake S, Ryan D, Hacker J (2011) Reconnaissance of species-rich coral reefs in a muddy, macro-tidal, enclosed embayment, - Talbot Bay, Kimberley, Western Australia. *Journal of the Royal Society of Western Australia* 94: 251–265.
39. Hatcher BG (1991) Coral reefs in the Leeuwin Current—an ecological perspective. *Journal of the Royal Society of Western Australia* 74: 115–127.
40. Wilson BR, Marsh LM (1979) Coral reef communities at the Houtman Abrolhos, Western Australia, in a zone of bio-geographic overlap. In: *Proceedings International Symposium on Marine Biogeography and Evolution in the Southern Hemisphere*. Auckland, New Zealand. 259–278.
41. Davis D, Banks S, Birtles A, Valentine P, Cuthill M (1997) Whale sharks in Ningaloo Marine Park: managing tourism in an Australian marine protected area. *Tourism Management* 18: 259–271.
42. Smallwood CB, Beckley LE, Moore SA, Kobryn HT (2011) Assessing patterns of recreational use in large marine parks: A case study from Ningaloo Marine Park, Australia. *Ocean & Coastal Management* 54: 330–340.
43. Abdo DA, Bellchambers LM, Evans SN (2012) Turning up the heat: Increasing temperature and coral bleaching at the high latitude coral reefs of the Houtman Abrolhos Islands. *PLoS ONE* 7: e43878.
44. Gilmour JP, Smith LD (2006) Category 5 cyclone at Scott Reef, northwestern Australia. *Coral Reefs* 25: 200.
45. Thomson DP, Bearham D, Graham F, Eagle JV (2011) High latitude, deeper water coral bleaching at Rottnest Island, Western Australia. *Coral Reefs* 30: 1107.
46. Moore JAY, Bellchambers M, Depczynski MR, Evans RD, Evans SN, et al. (2012) Unprecedented mass bleaching and loss of coral across 12° of latitude in Western Australia in 2010–11. *PLoS ONE* 10.1371/journal.pone.0051807.
47. Depczynski M, Gilmour JP, Ridgway T, Barnes H, Heyward AJ, et al. (In Press) Bleaching, coral mortality and subsequent survivorship on a West Australian fringing reef. *Coral Reefs*.
48. Commonwealth of Australia (2006) *A Guide to the Integrated Marine and Coastal Regionalisation of Australia Version 4.0*. Canberra: Department of the Environment and Heritage.
49. Onton K, Page CA, Wilson SK, Neale S, Armstrong S (2011) Distribution and drivers of coral disease at Ningaloo reef, Indian Ocean. *Marine Ecology Progress Series* 433: 75–84.
50. Cassata L, Collins LB (2008) Coral reef communities, habitats, and substrates in and near sanctuary zones of Ningaloo Marine Park. *Journal of Coastal Research*: 139–151.
51. Greenstein BJ, Pandolfi JM (2008) Escaping the heat: range shifts of reef coral taxa in coastal Western Australia. *Global Change Biology* 14: 513–528.
52. CALM & MPRA (2005) *Management Plan for the Ningaloo Marine Park and Muiron Islands Marine Management Area 2005–2015*. Management Plan: 112.
53. Twigg EJ, Collins LB (2010) Development and demise of a fringing coral reef during Holocene environmental change, eastern Ningaloo Reef, Western Australia. *Marine Geology* 275: 20–36.
54. Hearn CJ, Parker (1988) IN. Hydrodynamic processes on the Ningaloo coral reef, Western Australia; *Proceedings of the 6th International Coral Reef Symposium: Vol. 2*. 497–502.
55. Woo M, Pattiaratchi C, Schroeder W (2006) Dynamics of the Ningaloo current off Point Cloates, Western Australia. *Marine and Freshwater Research* 57: 291–301.
56. Carleton J, Done T (1995) Quantitative video sampling of coral reef benthos: large-scale application. *Coral Reefs* 14: 35–46.
57. Leujak W, Ormond R (2007) Comparative accuracy and efficiency of six coral community survey methods. *Journal of Experimental Marine Biology and Ecology* 351: 168–187.
58. Wilson SK, Graham NAJ, Polunin NVC (2007) Appraisal of visual assessments of habitat complexity and benthic composition on coral reefs. *Marine Biology* 151: 1069–1076.
59. Glynn PW (1996) Coral reef bleaching: facts, hypotheses and implications. *Global Change Biology* 2: 495–509.
60. Cresswell G, Badcock K (2000) Tidal mixing near the Kimberley coast of NW Australia. *Marine and Freshwater Research* 51: 641–646.
61. Pearce A, Faskel F, Hyndes G (2006) Nearshore sea temperature variability off Rottnest Island (Western Australia) derived from satellite data. *International Journal of Remote Sensing* 27: 2503–2518.
62. Wernberg T, Smale DA, Tuya F, Thomsen MS, Langlois TJ, et al. (2012) An extreme climatic event alters marine ecosystem structure in a global biodiversity hotspot. *Nature Climate Change* 3: 78–82.
63. Sokal RR, Rohlf FJ (1995) *Biometry: the principles and practice of statistics in biological research*: WH Freeman. New York.
64. Davison AC, Hinkley DV (1997) *Bootstrap methods and their application*. Cambridge Univ Press, UK.
65. Graham NAJ, Nash KL, Kool JT (2011) Coral reef recovery dynamics in a changing world. *Coral Reefs* 30: 283–294.
66. Mosquera I, Côté IM, Jennings S, Reynolds JD (2000) Conservation benefits of marine reserves for fish populations. *Animal Conservation* 3: 321–332.
67. Zuur AF, Ieno EN, Walker NJ, Saveliev AA, Smith GM (2009) *Mixed effects models and extensions in ecology with R*: Springer Verlag, New York.
68. Burnham KP, Anderson DR (2002) *Model selection and multimodel inference: a practical information-theoretic approach*: Springer Verlag, New York.
69. Team RDC (2012) *R: A language and environment for statistical computing*. R Foundation for Statistical Computing, Vienna, Austria. ISBN 3–900051–07–0, URL <http://www.R-project.org/>.
70. Bellwood DR, Hughes TP (2001) Regional-scale assembly rules and biodiversity of coral reefs. *Science* 292: 1532–1535.
71. Sheppard CRC (2000) Coral reefs of the western Indian Ocean: an overview. In: McClanahan T, Sheppard CRC, Obura D, editors. *Coral Reefs of the Indian Ocean - Their Ecology and Conservation*. New York: Oxford University Press.
72. Dinsdale EA, Smith LD (2004) Broad-scale survey of coral condition on the reefs of the Easter Group of the Houtman Abrolhos Islands. Western Australian Department of Fisheries.
73. Harriott V, Banks S (2002) Latitudinal variation in coral communities in eastern Australia: a qualitative biophysical model of factors regulating coral reefs. *Coral Reefs* 21: 83–94.
74. Lough JM, Barnes DJ (2000) Environmental controls on growth of the massive coral *Pocillopora*. *Journal of Experimental Marine Biology and Ecology* 245: 225–243.
75. Cooper TF, O'Leary RA, Lough JM (2012) Growth of Western Australian corals in the Anthropocene. *Science* 335: 593–596.
76. Thomson DP, Frisch AJ (2010) Extraordinarily high coral cover on a nearshore, high-latitude reef in south-west Australia. *Coral Reefs* 29: 923–927.
77. Celliers L, Schleyer MH (2008) Coral community structure and risk assessment of high-latitude reefs at Sodwana Bay, South Africa. *Biodiversity and Conservation* 17: 3097–3117.
78. Johannes RE, Wiebe WJ, Crossland CJ, Rimmer DW, Smith SV (1983) Latitudinal limits of coral reef growth. *Marine Ecology Progress Series* 11: 105–111.
79. Collins L, Zhu Z, Wyrwoll KH, Hatcher B, Playford P, et al. (1993) Late Quaternary evolution of coral reefs on a cool-water carbonate margin: the Abrolhos Carbonate Platforms, southwest Australia. *Marine Geology* 110: 203–212.

80. Schleyer MH, Celliers L (2003) Biodiversity on the marginal coral reefs of South Africa: What does the future hold? *Zoologische Verhandlungen* 345: 387–400.
81. Van Woerik R, Done TJ (1997) Coral communities and reef growth in the southern Great Barrier Reef. *Coral Reefs* 16: 103–115.
82. Sofonia JJ, Anthony K (2008) High-sediment tolerance in the reef coral *Turbinaeria mesenterina* from the inner Great Barrier Reef lagoon (Australia). *Estuarine, Coastal and Shelf Science* 78: 748–752.
83. Anthony KRN (2006) Enhanced energy status of corals on coastal, high-turbidity reefs. *Marine Ecology Progress Series* 319: 111–116.
84. Kroon FJ, Kuhnert PM, Henderson BL, Wilkinson SN, Kinsey-Henderson A, et al. (2011) River loads of suspended solids, nitrogen, phosphorus and herbicides delivered to the Great Barrier Reef lagoon. *Marine Pollution Bulletin* 65: 167–181.
85. Olsson P, Folke C, Hughes TP (2008) Navigating the transition to ecosystem-based management of the Great Barrier Reef, Australia. *Proceedings of the National Academy of Sciences* 105: 9489–9494.
86. Gilmour JP, Smith LD, Heyward AJ, Baird AH, Pratchett MS (2013) Recovery of an isolated coral reef system following severe disturbance. *Science* 340: 69–71.
87. Roff G, Clark TR, Reymond CE, Zhao J, Feng Y, et al. (2013) Palaeoecological evidence of a historical collapse of corals at Pelorus Island, inshore Great Barrier Reef, following European settlement. *Proceedings of the Royal Society B: Biological Sciences* 280: 1471–2954.
88. Wilkinson C, Lindén O, Cesar H, Hodgson G, Rubens J, et al. (1999) Ecological and socioeconomic impacts of 1998 coral mortality in the Indian Ocean: An ENSO impact and a warning of future change? *Ambio* 28: 188.
89. Simpson CJ, Cary JL, Masini RJ (1993) Destruction of corals and other reef animals by coral spawn slicks on Ningaloo Reef, Western Australia. *Coral Reefs* 12: 185–191.
90. Ayling T, Ayling AL (1987) Ningaloo Marine Park: Preliminary fish density assessment and habitat survey: with information on coral damage due to *Drupella comus* grazing. Report prepared for the Department of Conservation and Land Management, Western Australia: Department of Conservation and Land Management.
91. Trapon ML, Pratchett MS, Penin L (2011) Comparative effects of different disturbances in coral reef habitats in Moorea, French Polynesia. *Journal of Marine Biology* 2011: 1–11.
92. Madin JS, Connolly SR (2006) Ecological consequences of major hydrodynamic disturbances on coral reefs. *Nature* 444: 477–480.
93. Morton B, Blackmore G, Kwok C (2002) Corallivory and prey choice by *Drupella nigosa* (Gastropoda: Muricidae) in Hong Kong. *Journal of Molluscan Studies* 68: 217–223.
94. Linares C, Pratchett M, Coker D (2011) Recolonisation of *Acropora hyacinthus* following climate-induced coral bleaching on the Great Barrier Reef. *Marine Ecology Progress Series* 438: 97–104.
95. Halford A, Cheal A, Ryan D, Williams DMB (2004) Resilience to large-scale disturbance in coral and fish assemblages on the Great Barrier Reef. *Ecology* 85: 1892–1905.
96. Edmunds PJ, Carpenter RC (2001) Recovery of *Diadema antillarum* reduces macroalgal cover and increases abundance of juvenile corals on a Caribbean reef. *Proceedings of the National Academy of Sciences* 98: 5067–5071.
97. Green DH, Edmunds PJ, Carpenter RC (2008) Increasing relative abundance of *Porites astreoides* on Caribbean reefs mediated by an overall decline in coral cover. *Marine Ecology Progress Series* 359: 1 Check pages.
98. Hughes TP (1989) Community structure and diversity of coral reefs: the role of history. *Ecology* 70: 275–279.
99. Wilson SK, Depczynski M, Fisher R, Holmes TH, O'Leary RA, et al. (2010) Habitat associations of juvenile fish at Ningaloo Reef, Western Australia: the importance of coral and algae. *PLoS One* 5: e15185.
100. Graham NAJ, Wilson SK, Jennings S, Polunin NVC, Robinson JAN, et al. (2007) Lag effects in the impacts of mass coral bleaching on coral reef fish, fisheries, and ecosystems. *Conservation Biology* 21: 1291–1300.
101. Jones GP, McCormick MI, Srinivasan M, Eagle JV (2004) Coral decline threatens fish biodiversity in marine reserves. *Proceedings of the National Academy of Sciences of the United States of America* 101: 8251–8253.
102. Graham NAJ, Wilson SK, Jennings S, Polunin NVC, Bijoux JP, et al. (2006) Dynamic fragility of oceanic coral reef ecosystems. *Proceedings of the National Academy of Sciences* 103: 8425–8429.
103. Cole AJ, Pratchett MS, Jones GP (2008) Diversity and functional importance of coral feeding fishes on tropical coral reefs. *Fish and Fisheries* 9: 286–307.
104. Przeslawski R, Ah Yong S, Byrne M, Worheide G, Hutchings P (2008) Beyond corals and fish: the effects of climate change on noncoral benthic invertebrates of tropical reefs. *Global Change Biology* 14: 2773–2795.
105. Connell JH, Hughes TP, Wallace CC (1997) A 30-year study of coral abundance, recruitment, and disturbance at several scales in space and time. *Ecological Monographs* 67: 461–488.
106. Hughes TP, Baird AH, Dinsdale EA, Moltschanivskyj NA, Pratchett MS, et al. (2012) Assembly rules of reef corals are flexible along a steep climatic gradient. *Current Biology* 22: 736–741.
107. Richards ZT, Bryce M, Bryce C (2013) New records of atypical coral reef habitat in the Kimberley, Australia. *Journal of Marine Biology* 2013: 1–8.
108. Bellwood D, Hughes T, Folke C, Nyström M (2004) Confronting the coral reef crisis. *Nature* 429: 827–833.
109. Figueira WF, Booth DJ (2010) Increasing ocean temperatures allow tropical fishes to survive overwinter in temperate waters. *Global Change Biology* 16: 506–516.
110. Last PR, White WT, Gledhill DC, Hobday AJ, Brown R, et al. (2011) Long-term shifts in abundance and distribution of a temperate fish fauna: a response to climate change and fishing practices. *Global Ecology and Biogeography* 20: 58–72.