

## BUSH DETECTIVE



*Western Grey Kangaroo*



*Quokka*



*Brush-tailed Possum*



*Chuditch*



### SCATS - or, who's pooed here?

Animals can be identified by their droppings (called scats) which are a characteristic shape and consistency. Remains within each scat can indicate what the animal ate (eg the hard bits of termites within an echidna scat) and the number of droppings can give an idea of how many animals are around. The drawings below are taken from 'Mammals of the Wellstead District'- see 'New Books'.

*Are any of them  
in your area?*



*Rabbit*



*Echidna*



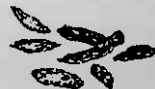
*Western Brush Wallaby*



*Southern Brown Bandicoot*



*Gould's Wattled Bat*



*House Mouse*