

BUSH DETECTIVE

WHO ATE THESE MARRI NUTS?



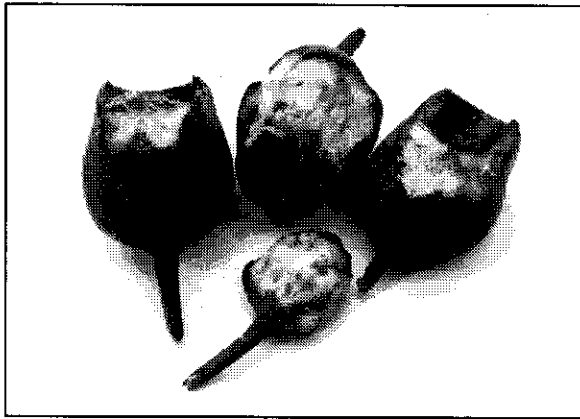
Back in February, Bush Detective showed drawings of the marks made by three different parrots when feeding on Marri fruit and seeds. Here are two more birds for whom Marri is a very important seed source.

A. Note that it is the flesh of the immature fruit that is being eaten.

B. Hard, dry fruits have been ripped open to get at the seeds.

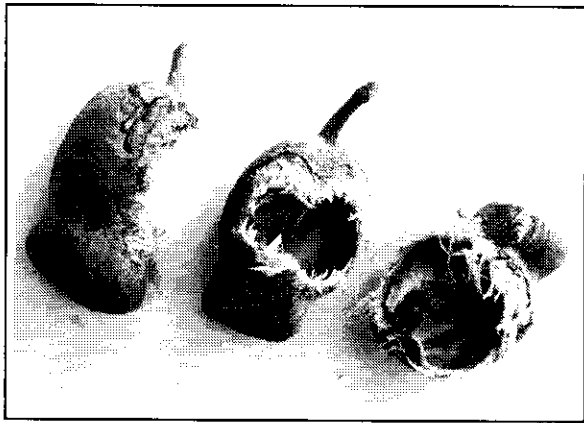
Remembering that we have already covered Twenty-eights, Red-caps and Baudin's Black Cockies, can you suggest what might have eaten these two?

A.



(photo: Robyn Knox)

B.



(photo: Peter Mawson)

Answer: A = Long-billed Corella B = Red-tailed Black Cockatoo