

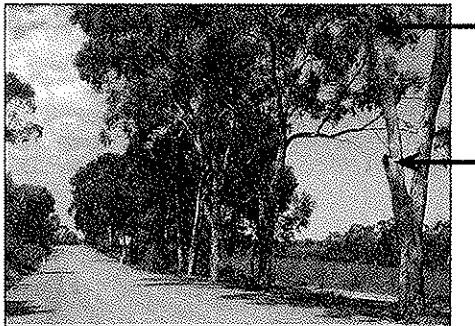
IN BRIEF

LOCAL AUTHORITY ROAD VERGE TREE PRUNING

Tree branches that lean across roads could form a hazard to traffic, especially for very large vehicles. Recently there has been some concern that Shire Councils are being unduly severe with the techniques and quantity of vegetation removal being undertaken. This stretch of Old Plains Road in Victoria Plains Shire shows how, with care and sensitivity, overhanging branches can be removed without destroying the biodiversity value and scenic quality of the road.

Old Plains Road is delightful rural road connecting New Norcia (in Victoria Plains Shire) with Toodyay (in Toodyay Shire). It is a very old track, established by the Benedictine Community in the 1840s, when all access to northern parts of the State was by sea, or via York and Toodyay. It passes through or alongside several very important conservation areas, and many of its verges still carry excellent native vegetation.

A few years ago, Victoria Plains Shire let a contract to remove overhanging limbs from many (all?) of its roads. Each limb was removed individually in such a way that it was cut clean and the rest of the tree was not damaged. The debris was then removed without damage to the understorey. The arrows show where limbs have been removed on the nearest tree.



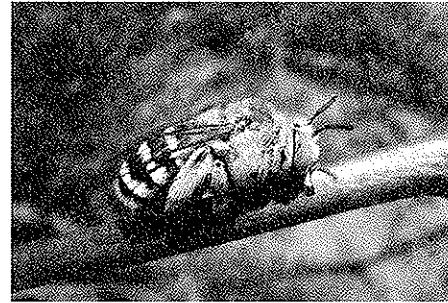
This demonstrates that it is possible to prune for safety, conservation and aesthetics! It just costs a little more in the short term.

MARRI CANKER

A new brochure outlines the problems caused by this disease and gives excellent photos for field recognition of the symptoms of marri canker. You can download it from the Program for Australian Tree Health (PATH) website: <http://www.science.murdoch.edu.au/centres/others/path/>

The website also contains an online survey for landholders wishing to assess the health of the Marri on their property.

HOW TO MAKE NEST BLOCKS FOR BLUE-BANDED BEES



Blue-banded bees are large, attractive solitary native bees often seen frequenting blue-flowering plants in early summer. They are very important pollinators, especially for 'buzz-pollinated' flowers. You might like to encourage them by installing nest blocks. Consult Article 8 in Aussie Bee Online to find out how:

www.aussiebee.com.au

Photo: Jacquie Hay

SOME THINGS DON'T CHANGE ...

In the Perth Gazette, on the 12th December 1840, the following comment appeared, under the heading 'Fire on the Swan':

"To persons lately arrived in the Colony, and unacquainted with the flammable nature of the bush in the summer season, we recommend the greatest caution. The rapidity with which a bush fire spreads will astonish them if they should be the unwitting instruments of bringing it into action. The end of a cigar thrown into the bush, or the remains of a pipe, will soon assist in producing a conflagration beyond the power of a number of hands to subdue."

NEW ROLEYSTONE BUSHCARE WEBSITE

Are you a LFW member from the Armadale area? Check out the RoleyBushCare website at www.roleybushcare.com. Just a few of the many topics that would be very useful to landowners are: local frogs and fish; where to obtain native plant seedlings; balga grasstrees; a list of contractors; free courses; a notice board and contacts. There are links to the Dieback Working Group, DEC's NatureBase Living With Animals, Armadale Gosnells Landcare, City of Armadale, Urban Bushland Council, and Bush Skills for the Hills. The information could also be very useful to residents or community groups in other areas.

Claire Hall