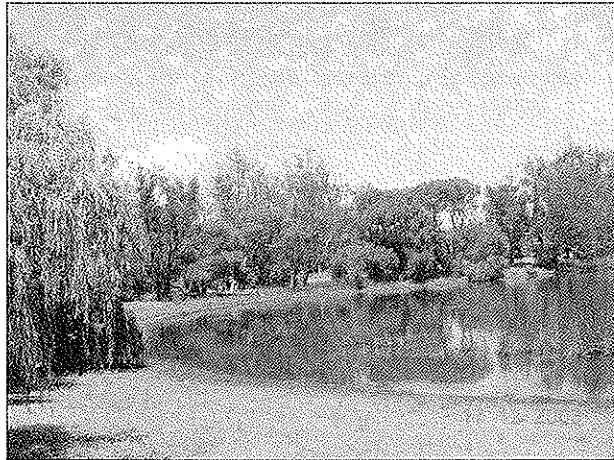


HERON LAKE VINEYARD LFW CELEBRATION AFTERNOON

a LFW 10th Anniversary event



The lake in 2003. Note lack of lake edge plants.



The lake in 2007. Note good establishment of reeds.

On the Saturday afternoon of 28th April, another LFW celebration field trip was held in the Busselton area.

Rob Goodwin, owner of Heron Lake Vineyard, very kindly opened up his property to 20 people attending this field trip, with Heron Lake Vineyard providing the range of wines and cheeses and LFW providing some light snacks.

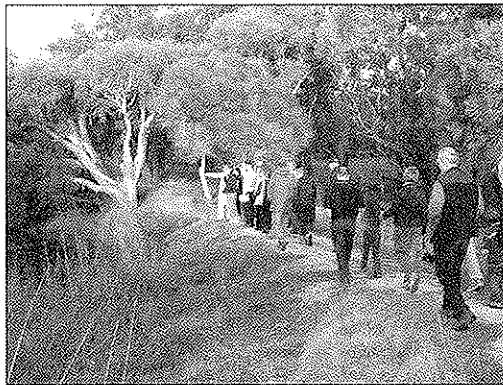
The original LFW visit to Heron Lake Vineyard was in 2003 where the lake was degraded and had very little natural vegetation cover around it. The property owners were successful in obtaining some Envirofunds to assist with their revegetation project, in combination with LFW, Geocatch and private consultants Iguana Consultants.

The project continued over three to four years and there were successes and failures, as with any project. The LFWers were interested to hear how the plantings went, weed control and that a number of wetland birds had returned to the lake.

Twenty thousand seedlings were planted in the project, with many people assisting from Geocatch, LFW and TAFE students, plus the vineyard management staff.

Rob told everyone at the field day

that he was a little disappointed in the outcome as he thought the project had not been as successful as it could have been, but that was due to a



*Inspecting the success of the reeds and rushes around the lake edge.
(All photos: C. Kemp)*

lake and small soak area, and were well grown. There are many small seedlings of the shrubs and trees surviving and growing along the banks of the lake, and many birds are using the habitat they provide – so all in all, a good outcome.

It was a wonderful afternoon as, just on dusk, everyone wandered around the lake watching the wetland birds with their glasses in hand, chatting about how this project enthused and refreshed them in their attempts at revegetation works on their own properties.

Cherie Kemp

poor growing season for nurseries, lack of available plants and weeds encroaching upon the site which are very difficult to control – it has been a learning experience for sure.

Most people there were amazed with how well the project had gone. Yes, it is true that not all the species survived and that not all the habitat intended was in place, but the overall appearance of the site compared to the original photos was vastly different.

Many of the rushes and sedges had established surrounding the

Did you know ...?

... that sheep disperse Guildford grass seeds? Sheep grazing on an infested paddock ingest large numbers of seeds, and each day pass out more than 500 viable seeds in their droppings.

(For ref., contact the Editor)