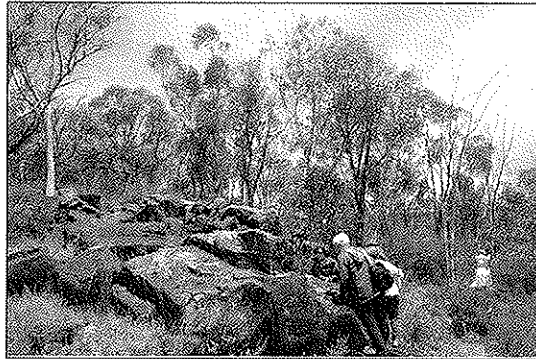


NEWS

BUSHLAND MANAGEMENT WITH FRIENDS! LFW COFFEE MORNING AT CHITTERING

LFW participants with properties in the Shire of Chittering were invited to attend an enjoyable and interesting LFW coffee morning held at 'Peace Be Still'. This stunning 170 ha property, owned by Wendy Gellard, contains walktrails and extends eastwards from the Brockman River to the Avon Valley National Park.



Examining warrine growing amongst dolerite boulders.

Whilst refreshments were being enjoyed, Wendy discussed her property and in particular the escalating problem of feral pigs. Alex, a friend of Wendy's, was introduced to the group and described how he has been tracking and identifying the resources used by the pigs prior to determine the most effective method of control. Everyone took the opportunity to talk about their properties, raise management issues and discuss points in common, with many useful suggestions being made.

The weather cleared as the group set out on a walk up the valley slope to where the lateritic plateau begins and a fenceline denotes the end of the previously grazed area.



Pig damage. Wendy is holding broken reticulation.

Ringbarked wandoos indicated very early clearing to promote pasture and heavy grazing continued until 20 years ago. It was interesting to see the difference in vegetation along this boundary as, although shrub regeneration has been excellent, the ground flora on the grazed section was still dominated by paddock weeds such as paterson's curse, cape tulip, capeweed and white bartsia. These weeds are very sparse in the never-grazed area away from disturbance caused by the fence and tracks. As if it were prearranged, our native wildlife put on a demonstration for us with father emu and his clutch of chicks stalking through the valley.

For many participants, the pig damage in the commercial orchard on the river flats was an eye-opener, with extensive soil disturbance and damage sustained to the reticulation. If this continues, it means that the orchard will not be able to be watered over summer and the commercial potential will be lost.

Just as we were returning to the house,

once again the skies opened up, and we ran for shelter and a final cuppa. A well-timed excursion!

Judging by the comments made, the coffee morning provided an excellent opportunity for LFWers to get together and meet with like-minded people and relax in an informal atmosphere. There were calls for more such events!

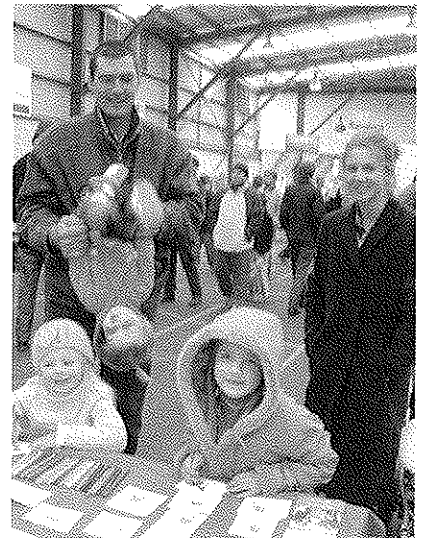
Zara Kivell

If you would be prepared to host a LFW coffee morning, with refreshments and organisation provided by LFW, please contact:

Zara Kivell (Hills and Avon Valley) ph 9295 9100; or

Heather Adamson (Coastal Plain) ph 9582 9333

KATANNING SHOW



The kids enjoyed themselves making badges with rare flora and fauna themes. The spiders were very popular!

Avril Baxter