



Spotlight on partnerships

One aspect of community environmental care and support that stands out is the number of activities where people and organisations are working together. Many of these collaborations have no formal memorandum of understanding or contract – though such formality often assists in clarifying what you wish to achieve together, as well as what each partner can realistically contribute.

Joint newsletter

“Our Bushland”, a combined community newsletter for eight bushland care groups in the northern suburbs is a recent initiative of the Friends of Koondoola Regional Bushland (FKBR) whom, like many other groups had produced their own newsletter for many years. It provides one or two pages for each group to highlight details of their bushland, contacts and activities. It also provides a seasonal flowering diary and a map showing bushland locations.



“The aim of this expanded newsletter is to keep members and newcomers informed as to what groups are up to and how they can participate. In addition, we hope it will assist us in gaining a higher profile in the general community, thus spreading enthusiasm to others,” explained Alice Stubber, editor and coordinator of “Our Bushland” and committee member of FKBR.

In a division of tasks, each group supplies their text and photos, Alice brings it all together in a professional newsletter format and the Swan Catchment Centre provides a free photocopying service.

“One of the added highlights of producing a joint newsletter has been the great team work and enthusiasm of all the friends groups,” reflected Alice.

Common focus

The joint development of a management plan has resulted in collaboration between a diverse group with competing interests and management responsibilities. A 1997 Natural Heritage Trust funded project to develop a management plan for Talbot Road Bushland in Swan View was the catalyst when a coordination committee was formed to work with the contractors. This process enabled the ‘partners’ from the Friends of Talbot Road, City of Swan, Metropolitan Cemeteries Board, CALM, Environmental Weeds Action Network (EWAN) and Ecoplan to focus on the bushland.

“This was the first major achievement. There was no formal agreement or memorandum of understanding, only a commitment from the agencies via the on-ground people,” explained CALM’s officer, John Carter.

“The second has been the cooperative approach to the ongoing management of the bushland. The commitment by all the partners through attending regular planning and management meetings is positive,” said John.

“The third has been the weed control and site rehabilitation that Kate Brown from EWAN coordinated, which has worked really well and ensured works are completed,” reflected John on the implementation of the plan.

FOREST SCIENCE LIBRARY
DEPARTMENT OF CONSERVATION
AND LAND MANAGEMENT
WESTERN AUSTRALIA

Combined training, resources and skills

The Skills for Nature Conservation training and development program is a partnership between the Swan Catchment Centre, Ecoplan and Greening Australia (WA) Bushcare Support Community Training Program. This leading-edge program provides a diverse range of no-cost, targeted, timely and relevant training opportunities for community conservation volunteers and professional environmental managers.

“The most rewarding aspect of this partnership has been its success in providing the community with a single comprehensive training program covering bushland ecology, management and people skills, enabling an increase in the range of topics covered and avoiding the duplication of the smaller separate programs,” said Gary Whisson, Manager, DEP and program partner.

Another aspect of collaboration beyond the three formal partners has been the program evaluation and design.


Continued on page 3




A group of happy participants at the Monitoring Aquatic Invertebrates workshop.


 It's been a special year for both volunteers and Ecoplan as we celebrated International Year of the Volunteer and Ecoplan's 10th birthday. Yet again a huge amount has been achieved and it has been wonderful for me to be able to see and hear about the work of many groups. I congratulate all of you for the hard work and commitment you have put in to protecting our precious bushland not just this year, but over many years. I hope you also recognise and gain satisfaction from the value of your own contribution.

 We had a great evening at our end of year wind-up at Naragebup, which we ran in conjunction with the Swan Catchment Centre and Greening Australia (WA). Thank you to everyone who attended a fascinating day and as one person said "it's the place where they walk the talk". Thank you to our hosts at Naragebup in particular Bob and Ann Goodale and Dawn Fitzgerald who ensured we had a great experience and some wonderful tours. Many thanks also to GAWA and the SCC for all their efforts organising the day.

 The Bushland Care Day program was very successful again this year with many new groups involved among the 20 days. The days are great social occasions as well as getting much needed work done in our bushland. Many thanks to our partners AlintaGas, Conservation Volunteers Australia and all group coordinators and members who put in a considerable amount of work to make these days such a success. Thank you also to Linda Taman, Selina Gates from AlintaGas, and the staff at CVA Ken, Conrad, Megan and Emma for their hard

work – congratulations also to Selina for her recent promotion. Finally and most importantly a big thank you to all the dedicated volunteers who go out come rain or shine.

 Thank you also to Kate Brown and Kris Brooks of the Environmental Weeds Action Network for their hard work and willingness to provide on-ground support and advice to bushland groups and to AABR(WA), especially Janice Marshall for ongoing hard work.

 The Skills for Nature Conservation training had a full program this year with 25 courses. We will be incorporating your feedback, enabling us to deliver a fitting program for 2002. A detailed training calendar will be sent out early in the new year and will be posted on the website of each organisation. Many thanks to our partners Bronwyn Ryan of the SCC, and to Rebecca Millar and Alice McLellan of GAWA and to all our fascinating and motivating presenters.

Thanks to all of you who have given me support and advice over this year and to Colma Keating for her contribution to Ecoplan News. Seasons Greetings and best wishes to you and your bushland for the coming year.

*Newsletter compiled and edited by
Colma Keating*

Best Wishes

Ecoplan sends best wishes to bushland care stalwart Joanna Seabrook, who has been recuperating both in hospital and with family and friends.

New portfolios

David Kemp has been appointed Federal Environment Minister. Previously he held the Education portfolio. Senator Hill is now responsible for the Defence portfolio.

Congratulations

Eastern Hills Catchment Management Project (EHCMP) was recently recognised in the Premier's Award for Excellence in Public Sector Management. The project was the winner of the Sustainable Environment category and was honoured for its contribution to providing catchment management information and support to the extensive network of community volunteers.

Contacts

Ecoplan office

Bridget Hyder-Griffiths
Department of Environmental
Protection
Westralia Square
141 St Georges Terrace
PERTH WA 6000
Telephone: 9222 7052
Fax: 9322 1598
bridget.hyder.griffiths
@environ.wa.gov.au

South-East Region

Brett Tizard ☎ 9497 4038

South Region

Denise Crosbie ☎ 9417 8460
Rex Sallur

North-West Region

David Hancock ☎ 9309 4569

Eastern Hills Region

Jenny Johnson ☎ 9295 4467

Conservation Council of WA

☎ 9420 7266

Environment Centre of WA

☎ 9225 4103

Greening Australia (WA)

☎ 9335 8933

APACE

☎ 9336 1262

Swan Catchment Centre

Bronwyn Ryan ☎ 9374 3333

Urban Bushland Council

Isabella Jennings ☎ 9420 7207
Haakon Nielssen ☎ 9420 7207

Bushcare facilitator

Jon Kaub ☎ 9474 7052

'Ecoplan News is a quarterly newsletter of Ecoplan, a Department of Environmental Protection program to support community involvement in bushland conservation'.

Autumn Ecoplan News



Forward your news, activities and regional reports for the Autumn Ecoplan News by 1 March 2002. Please keep your regional reports under 250 words and articles as brief as possible. Send us your photos! Fax, e-mail or write to Bridget (see Ecoplan contacts panel on this page). Thanks to all contributors.

Continued from page 1

"The program is market-driven in its approach and through rigorous evaluation and feedback is responsive to the changing needs of the community," enthused Mike Grasby, Chairperson, Swan Catchment Council and program partner.

Gleaning ideas

Other positive and practical collaborations with community bushland care groups include local councils, private companies, funding bodies, community organisations and state government agencies – many of which are highlighted in Ecoplan News Regional Reports and provide ideas for new partnerships.

Weed of the year

Environmental Weed Action Network Weed for 2002 is the Arum Lily (*Zantedeschia aethiopica*).

Enquiries Hazel Dempster, 9405 3266 or <http://members.iinet.net.au/~ewan/>

A weed plan for WA

Weeds pose a more widespread risk to the state's bioregions than salinity. Therefore, in response to WA's most serious environmental challenge, the State Weed Plan Steering Group has recently prepared a 'Weed Plan for Western Australia'. This informative booklet includes the principles of weed management and sets out the components of the State Weed Plan, including recommendations. Copies can be obtained from the Swan Catchment Centre 9374 3333 or www.agric.wa.gov.au/swp.

Thanks again weedbusters!!

Many thanks for your contributions to Weedbuster Week 2001 which helped generate more awareness and knowledge about the importance of controlling environmental weeds. There were lots of great activities, and one which illustrated the enormous volunteer commitment of this week was a schools program coordinated by Alice Stubber and the Friends of Koondoola Regional Bushland (refer Regional Reports). Alice reflected on the broader environmental benefits of focussing on weeds "During our time in the bushland, students are always inquisitive and wanting to know more. Urban bushland is now confined to small reserves and not on everyone's doorsteps as it was for the older generations. Weeds provide a doorway to learning more about the many intricacies of our natural environment. Activities such as Weedbuster Week give the students an opportunity to experience nature first hand, and experience is the best teacher".



We now look forward to your efforts for Weedbuster Week in October 2002. Registering your weedy event helps draw attention to just how much the community is putting into the control and management of weeds.

Enquiries Sandy Lloyd, Department of Agriculture 9368 3760 or slloyd@agric.wa.gov.au

FloraBase request for slides and/or prints

The WA Herbarium is continuing to update the state's electronic 'virtual herbarium' FloraBase and has a list of species which still need good clear photos to demonstrate growth habit, flower parts etc. FloraBase can be viewed on www.calm.wa.gov.au/science/florabase.

For further information call Kath Napier, WA Herbarium 9334 0500.

End-of-year wind-down

On 17 November, more than 50 people joined the Swan Catchment Centre, Ecoplan and Greening Australia (WA) Bushcare Support for an end-of-year wind-down at Naragebup Rockingham Regional Environmental Centre. As promised, the gathering gave volunteers, Skills for Nature Conservation (SNC) course presenters and support organisations the opportunity to meet with others involved in bushland, catchment, river and wetland care.

Guests also enjoyed a tour of Naragebup and as the sun set, a relaxed barbeque with views over Lake Richmond whilst a swamp harrier swept the sky, hunting for food in the surrounding coastal heath. Aligning with the guiding principles of the SNC training and development program, the visit also enabled more people to get a first hand look at the outstanding work Naragebup has achieved through incredible volunteer effort, partnerships and bartering – as well as learn something new as we enjoyed our tours.

Special thanks to Ann and Bob Goodale and the Naragebup volunteers who made us welcome and assisted as we explored the dynamic resource centre.

Funding Opportunities

Lotteries Commission Grants

Information and Communication Technology Grants are available to help community organisations purchase essential equipment and software. Gordon Reid Foundation for Conservation Grants are available for conservation focussed projects, including on-ground works.

For more information contact the program coordinators on 1800 655 270 or email community_funding@lottery.wa.gov.au or www.lottery.wa.gov.au/corporate/grantsguide

Perth Biodiversity Project (PBP)

Attention all Local Governments and community environmental groups in the Perth Metropolitan Region! In mid-December, the Perth Biodiversity Project will be calling for expressions of interest to fund about five major biodiversity projects across the Perth Metropolitan Region.

Local governments in partnership with community groups are encouraged to apply for funding to undertake on-ground works and capacity building exercises to conserve biodiversity. Expressions of interest will be due at the end of January 2002.

For more information please contact Carla Miles, Biodiversity Coordinator, Perth Biodiversity Project Western Australian Local Government Association on 9213 2048 or cmiles@walgga.asn.au.

Natural Heritage Trust

As Ecoplan News went to print, the details for the Natural Heritage Trust grants program had not been finalised. For up-to-date information call John Holley, Department of Agriculture 9368 3333 or Keith Claymore, Department of Conservation and Land Management 9334 0333 or visit the Federal Government program website www.nht.gov.au

Tuart summit taps deep community concern

Tuart, otherwise known as *Eucalyptus gomphocephala* is a typical and unique tree of the Swan Coastal Plain. Their natural range is on the coastal limestones between Jurien and Busselton, with some growing somewhat further inland along rivers. These graceful trees support an amazing array of native fauna and can grow up to 40 metres tall in very poor alkaline soils.

Concern about the decline of Tuarts led a summit at the Rockingham Regional Environment Centre in November, attended by more than eighty people. The summit was dedicated to learning about the nature and ecology of Tuart, the plant communities in which they exist, the threats facing Tuarts and formulating measures to counter the threats.

For more information call the Urban Bushland Council 9420 7207.

Implementing Bushplan

The Urban Bushland Council recently coordinated a Bushplan implementation briefing with relevant government agencies and interested community groups.

The Minister for Environment Dr Judy Edwards has begun negotiations with her Ministerial colleagues on the protection of Government-owned land identified through Bushplan and has established an Inter-agency Working Group to progress these negotiations and work towards the protection of the privately-owned sites. This working group will be chaired by Angas Hopkins, who has been seconded from CALM to work exclusively on implementing the government's policy commitments on Bushplan.

Seed collecting – care and permits

During the early summer months many groups will continue to collect seeds for local regeneration work. Although desirable to collect and propagate local seed, it is important that it is done with the greatest care for the bushland, within the requirements of the law and done well so your time is not wasted (e.g. picking unripe, non-viable or insect damaged seed).

Checklist

A minimal checklist includes:

- permission from the owner/vesting authority of the land (e.g. local council)
- collecting permit (from Department of Conservation and Land Management)
- knowledge of when and how to collect seeds
- knowledge of how to clean, store and germinate seeds
- collecting seed only from plants you can identify
- maintenance of the bushland where you are collecting – by leaving at least 85% of the seed source on the plant to ensure they can naturally support their own regeneration (i.e. do not remove more than 15% from any single plant, and if they have a low seed set that year, do not put any more pressure on them by collecting their limited seed)
- minimise the impact of seed collecting in a natural area e.g. trampling
- ensure you do not collect seed from Declared Rare Flora (this is an offence under the Wildlife Conservation Act)
- use appropriate protective clothing such as gloves and eye wear.

Permits

CALM is responsible for the provision and monitoring of seed collecting licences – both commercial and for scientific or other purposes (such as for small scale community bushland care work). Any local bushland care group requires a licence – even if the seed is being collected from private land.

Courses and resources

Seed collecting courses are run by a number of organisations including APACE and the Wildflower Society (e.g. Eastern Hills Branch) and advertised on many networks including the Swan Catchment Centre and Ecoplan News. Information has also been developed by many organisations including Land for Wildlife (Seed Collection from Native Plants, Wildlife Notes No. 4), Greening Australia (Growing Understorey Seed by Joanna Seabrook), Urban Bushland Council (Direct Seeding Course Notes by Haakon Nielszen) and FloraBank.

Many of these organisations also offer a well stocked library on this and other bushland care topics which you are most welcome to utilise.

Further information

- APACE 9336 1262 or apace@argo.net.au
- CALM Licensing 9334 0333
- FloraBank 02 6281 8585 or www.florabank.org.au
- Greening Australia (WA) 9335 8933 or greening@gawa.comdek.net.au
- Land for Wildlife 9334 0427 or clairh@calm.wa.gov.au (free copies (up to 10 per group) of Wildlife Notes No. 4)
- Swan Catchment Centre 9374 3333 or saicc@wrc.wa.gov.au
- Urban Bushland Council 9420 7207 or ubc@wantree.net.au
- Wildflower Society 9383 7979 or wildflowers@ozemail.com.au



Federal funds to boost backyard flora and fauna

The Federal Government has allocated half a million dollars of Natural Heritage Trust (NHT) funds for an innovative national program to encourage native flora and fauna in Australia's urban gardens. The government wants to encourage and show communities throughout Australia how they can create truly 'living gardens' – gardens that naturally attract, nourish and provide a safe haven for our unique birds, butterflies, frogs and lizards. The new Flora for Fauna project developed by Australia's Nursery and

Garden Industry will provide urban gardeners with a practical way to contribute to enhancing and protecting Australia's unique biodiversity.

To find out more visit the NHT website www.nht.gov.au/.

Econotes: Spiders – the silk spinners of the bush

by Mark S. Harvey, Curator of Arachnids,
Western Australian Museum, Perth

Spiders are one of the most diverse groups of animals on the planet, with nearly 40 000 named species, and an estimated total of 250 000 species world wide. The Australian fauna consists of about 2 500 named species and a potential total fauna of 15 000 species. This incredible diversity is reflected in their abundance, as spiders can be found just about anywhere on earth, from the sea-shore to the slopes of Mt Everest.

So why are they so abundant and why have they been so successful? The answers to these questions have puzzled scientists and amateurs for decades, but the main clue probably lies in their ability to spin silk – an adaptive advantage that has enabled them to conquer the earth.

Ancient silk spinners

Spiders are one of the most ancient of all animal groups, as shown by fossilised parts of spiders found in Devonian sediments in the USA – over 380 million years old. The fossil consists of a single spinneret. Spinnerets are the organs situated at the rear of all spiders that discharge silk. The fossilised spinneret clearly shows the small tubes used to extrude the silk, just as modern spiders do.

Each spinneret is a segmented finger-like organ with a hundred or more minute spinning tubes or spigots from which fluid silk is drawn. All spiders have at least three types of silk glands, each producing different types of silk: for egg sacs, for lining shelters and for safety lines or radial threads in wheel webs, (Simon-Brunet 1994).

The many uses of silk

The ability to spin silk allows spiders to modify their local environment to their advantage. Primitive spiders such as trap-door spiders and funnel-web spiders often dig deep silk-lined burrows in which they shelter. Some species equip the burrow with a hinged lid to provide protection from the elements and to regulate humidity and temperature within the burrow, a vital need for animals that may quickly desiccate under inappropriate conditions.

Orb-weaving spiders spin orb-shaped webs that are strung between vegetation and other structures off the ground to catch their insect prey. These spiders first appeared in the fossil record during the Jurassic – some 150 million years ago – at a time when flying insects were an abundant food source.

Spiders can use silk to wrap their prey. This silk is combed out in large swathes either by directly applying it from their

A Wheel Web Construction



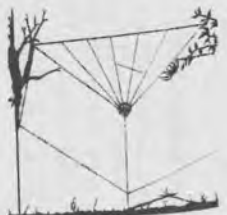
The secret to bridging these spaces is directly associated with air currents. A tuft of sticky silk is played out to the air.



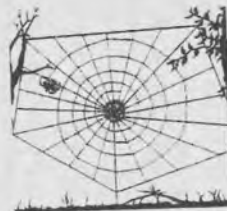
The breeze having carried the silk to a point of contact, the spider immediately tests the line for attachment, for this to become a bridge.



Having thickened the thread by travelling back and forth laying threads the spider will travel to a halfway point and fix a thread. From this point the spider will drop to the ground forming a 'Y' shape which will be attached to the ground. The hub of the web is formed from the fork of the 'Y'.



The spider now constructs the radial threads and frame.



Attachment zone for radial lines.



The snare completed with its sticky spiral thread.

spinnerets or by using their back legs to pull it out over their victim. The spider can then feed without its prey being able to struggle free.

Spider silk provides a protective covering for the eggs which are laid en masse. This protective silk deters predators from eating the eggs as well as providing a safe microclimate in which the embryos can safely develop.

Urban Bushland remnants

Spiders are literally everywhere – but this does not imply that all species of spiders are found everywhere, although some are capable of widespread dispersal and are fairly ubiquitous across Australia. Some spider species – such as certain trapdoor spiders – are remarkably restricted, being found only in small geographic areas. The reasons for the evolution of such highly restricted species are complex, but south-western Australia has a wide variety of such spiders. Due to land clearance and the degradation of many bushland remnants by fire, weeds, pests (such as rabbits) and inappropriate grazing practices, many populations of such spiders are in danger of becoming locally extinct, raising concerns over the continuing survival of these relicts from the past.

The future

We still don't have any idea of the true extent of the total fauna of Western Australia and new species that we have never seen before are commonplace. Indeed, recent studies on many different groups of spiders in Western Australia have revealed numerous new genera, as well as new species! We still have a lot to learn about our local silk spinners of the bush, how many types are out there, what their ecological requirements are, and how they might be protected from the pressures imposed by land clearance and other modifications to their environment. Without spiders, the world would be a vastly different place, as their role as predators in all ecosystems is virtually unsurpassed.

Further information

Books and other literature, as well as a wide array of different preserved specimens, can be obtained from the Western Australian Museum's Discovery Centre on 9427 2836 or <http://www.museum.wa.gov.au/discovery/centre>. The Centre is open daily from 9.30 am to 5.00 pm.

Further Reading

Simon-Brunet, B. (1994) *The Silken Web – a Natural History of Australian Spiders*, Reed Books, Chatswood (NSW).

York Main, B (1967) *Between Wodjil and Tor*, Jacaranda Press, Perth (WA).

All illustrations from Simon-Brunet 1994.

Opportunities for you to participate!
Visitors always welcome.

January

5 Saturday 9am

Potting out morning at Yellagonga Nursery, Landsdale Farm School cnr Evandale and Landsdale Rds. Call Jacqui 94091412, particularly if your first visit.

5 Saturday 10am

Nature walk with Friends of Yellagonga. Meet at Backshall Place (off Ocean Reef Rd) on the eastern side of Lake Joondalup. Call Jacqui 94091412.

10 Thursday to 16 Wednesday

A five day professional development course "Catchments, Corridors and Coasts: promoting a landcare ethic" presented by the Australian Association for Environmental Education Inc (WA). Jam-packed with great environmental education experiences from presentations to field walks and participatory activities in a variety of settings. The course is valued at \$400-600 per participant but is heavily subsidised and will only cost \$126.50 unwaged and \$154 waged. Hurry, filling fast. Call Janerte Huston on 9574 6039 or email peakpor@vianet.net.au.

12 Saturday 8am

Guided nature walk with the Friends of Koondoola Regional Bushland. Meet at the display shelter, north east junction of Koondoola and Burbidge Avenues (gate 2). Call Alice 9306 3221.

12 Saturday 9am

Potting out morning at Yellagonga Nursery, Landsdale Farm School cnr Evandale and Landsdale Rds. Call Jacqui 94091412, particularly if your first time.

13 Sunday 8 - 11am

Busy-bee at Paterson St Drain in Bayswater with Bayswater Integrated Catchment Management (BICM). Bring your own weeding fork. Morning tea provided. Call Cherie at BICM on 9271 7922.

17 Thursday 9am

Beach and reef walk for over 50's with the Friends of Marmion Marine Park. Meet at Burns Beach hall. Call Lynda 9342 8684.

19 Saturday 8am

Nature walk with the Friends of Lake Gwelup. Meet at the scout hall, Huntriss Rd, Gwelup. Call Betty 9444 5640.

19 Saturday 9am

Potting out morning at Yellagonga Nursery, Landsdale Farm School cnr Evandale and Landsdale Rds. Call Jacqui 94091412, particularly if your first visit.

19 Saturday to 20 Sunday

Creating a native garden with Bob Dixon, Kings Park and Botanic Gardens. Call the University of WA summer school extension program on 9380 2433.

20 Sunday 8.30am

Explore the local coast with Quinns Rocks Environmental Group (QREG), as part of the Coastwest/Coastcare summer festival. Meet at the car park corner of Quinns Rd and Ocean Dr, Quinns Rocks. Bring along your hat, sunscreen and water bottle for a fun morning by the sea. Children to be accompanied. Call Renata 9305 9382 or David 9420 7268.

23 Wednesday 9am - 12pm

Basic bush regeneration training course involving an introduction to wetland rehabilitation, weed control and plant recognition delivered by the Bennett Brook Catchment Group (BBCG). Open to all. Call BBCG 9377 0444.

26 Saturday 8am

Guided walk with the Friends of Star Swamp Bushland. Meet grassed area Hope St, North Beach. Call Christine 9447 2983.

26 Saturday 9am

Potting out morning at Yellagonga Nursery, Landsdale Farm School cnr Evandale and Landsdale Rds. Call Jacqui 94091412, particularly if your first visit.

February

2 Saturday

WORLD WETLANDS DAY
For further information call Cockburn Wetlands Education Centre 9417 8460.

2 Saturday 9am

Potting out morning at Yellagonga Nursery, Landsdale Farm School cnr Evandale and Landsdale Rds. Call Jacqui 94091412, particularly if your first visit.

2 Saturday 10am

Nature walk with Friends of Yellagonga. Meet at corner of Lakeway Drive and Meadowlark Rise, on the eastern side of Lake Goollalal. Call Jacqui 94091412.

9 Saturday 9am

Potting out morning at Yellagonga Nursery, Landsdale Farm School cnr Evandale and Landsdale Rds. Call Jacqui 94091412, particularly if your first visit.

9 Saturday 8am

Guided nature walk with the Friends of Koondoola Regional Bushland. Meet at the display shelter, north east junction of Koondoola and Burbidge Avenues (gate 2). Call Alice 9306 3221.

11 Monday to 13 Wednesday

Seed collecting course at Apaca. Free for community group members. Call Apaca 9336 1262.

16 Saturday 8am

Nature walk with the Friends of Lake Gwelup. Meet at the scout hall, Huntriss Rd, Gwelup. Call Betty 9444 5640.

16 Saturday 9am

Potting out morning at Yellagonga Nursery, Landsdale Farm School cnr Evandale and Landsdale Rds. Call Jacqui 94091412, particularly if your first visit.

16 Saturday 2 - 5pm

Environmental Weeds Action Network (EWAN) annual general meeting with speakers including Mark Agar (WA Local Government Association Perth Biodiversity Project) and Greg Keighery (CALM). Theatre, Department of Agriculture, Baron-Hay Court, South Perth. Call Diane on 9457 2896.

17 Sunday 10am - 1pm

Preparation of field herbarium, with the Friends of Warwick Bushland at 10 Aberfoyle Place, Hamersley. Call Karen 9342 8482 or Robyn 9342 8482.

19 Tuesday 7.30pm

Naragebup - Rockingham Regional Environment Centre annual general meeting, including report and discussion on "sustainability of Naragebup". Safety Bay Road (opposite Lake Richmond), Peron. Call Bob 9591 3077.

23 Saturday 8am

Guided walk with the Friends of Star Swamp Bushland. Meet grassed area Hope St, North Beach. Call Christine 9447 2983.

23 Saturday 9am

Potting out morning at Yellagonga Nursery, Landsdale Farm School cnr Evandale and Landsdale Rds. Call Jacqui 94091412, particularly if your first visit.

March

2 Saturday 9am

Potting out morning at Yellagonga Nursery, Landsdale Farm School cnr Evandale and Landsdale Rds. Call Jacqui 94091412, particularly if your first visit.

3 Sunday

CLEAN UP AUSTRALIA DAY
For further information on how to participate contact the Keep Australia Beautiful Council on 9371 8055.

3 Sunday 7am

CLEAN UP AUSTRALIA DAY
ACTIVITY with the Friends of Koondoola Regional Bushland.

Some key events in 2002

Coastwest/Coastcare Summer Festival

Activities catering for the young and old will include snorkel adventures, rockpool rambles, beach walks, slide nights, seminars, bush tucker walks and much more. Not restricted to Perth metropolitan region. For up-to-date details contact Coastwest/Coastcare Regional Coordinator Cathy Ronalds on 9213 2065 or cronalds@wama.wa.gov.au.

Join the WA Environment Festival

The 4th WA Environment Festival will be held at Naragebup, Rockingham on 23-24 March. Entry is free, so come along and enjoy the huge range of environmental displays and activities including: renewable energy, organic gardening, workshops, nature walks and art. Naragebup also invites environment groups who wish to hold displays or activities during the festival to register by 31 January. Naragebup - Rockingham Regional Environment Centre, Safety Bay Road (opposite Lake Richmond), Peron. Call Ann or Bob Goodale on 9591 3077 or rrec@southwest.com.au.

Practical wetlands management

The Cockburn Wetlands Education Centre (CWEC) is holding a number of practical management workshops, including Wetlands Conservation in WA (February) and Wetlands and Urban Catchment Management (April). The February event is jointly presented with the Australian Wetlands Alliance for World Wetlands Week. For more information contact Denise Crosbie at CEWC on 9417 8460 or cwec@wetlands-education.org

Waterwise and local plant focus

Garden Week at Perry Lakes 11-16 April.

For more information contact the Nursery and Garden Industry Association on 9485 1144 or www.niawa.com.au.

Coastal Law in WA

A seminar by the Environmental Defenders Office on 18 May. Call the EDO 9221 3030.

Wildflower Society activities

The Wildflower Society has a number of key activities planned including the Biennial Lecture in May by George Lullfitz, the annual conference in late June and the spring fling in early September. Remember also to check out the individual branch meetings which always have interesting and practical presentations and workshops. Call the Society 9383 7979 or visit www.ozemail.com.au/~wildflowers.

Greening Australia (WA)'s celebrations

2002 marks GAWA's 20th birthday, and also the 10th birthday for their Grow Us A Home environmental education program. For more information on celebration activities call GAWA on 9335 8933.

National weeds conference in Perth

13th Australian Weeds Conference organised by the Plant Protection Society of WA for the Council of Weed Science Societies will be held at the Sheraton in Perth from 8-13 September. Papers will focus on weeds in agriculture, urban, forestry and natural ecosystems. For more information contact convlink@iinet.net.au or 9450 1662 or visit the Environmental Weeds Action Network website <http://members.iinet.net.au/~weeds>.

Meet at the display shelter, north east junction of Koondoola and Burbidge Avenues (gate 2). Call Alice 9306 3221.

3 Sunday 7.30 - 10.30am

CLEAN UP AUSTRALIA DAY
ACTIVITY with Friends of Warwick Bushland. Meet at the Warwick Senior High School car park, off Erindale Rd. Call Karen 9342 8482 or Robyn 9342 8482.

8 Friday 6.45pm

Night walk with Friends of Yellagonga, meet at Neil Hawkins Park, on the western side of Lake Joondalup. Call Jacqui 94091412.

9 Saturday 8am

Guided nature walk with the Friends of Koondoola Regional Bushland. Meet at the display shelter, north east junction of Koondoola and Burbidge Avenues (gate 2). Call Alice 9306 3221.

9 Saturday 9am

Potting out morning at Yellagonga Nursery, Landsdale Farm School cnr Evandale and Landsdale Rds. Call Jacqui 94091412, particularly if your first visit.

10 Sunday to 17 Sunday

SEAWEEK with the theme "Diving Deeper". Lots of activities, if you want to be involved contact Coastwest/Coastcare Regional Coordinator Cathy Ronalds at the WA Local Government Association on 9213 2065 or cronalds@waga.asn.au

13 Wednesday 7.30pm

Australian Association of Bush Regenerators (WA) annual general meeting with address by Mark Agar, Manager, Perth Biodiversity Project, WA Local Government Association. Kings Park Administration Building. Call Janice on 9381 1479 or aabr@wrc.wa.gov.au.

15 Friday 7.30pm

Guided night walk with the Friends of Koondoola Regional Bushland. Meet at the display shelter, north east junction of Koondoola and Burbidge Avenues (gate 2). Call Alice 9306 3221.

16 Saturday 8am

Nature walk with the Friends of Lake Gwelup. Meet at the scout hall, Huntriss Rd, Gwelup. Call Betty 9444 5640.

16 Saturday 9am

Potting out morning at Yellagonga Nursery, Landsdale Farm School cnr Evandale and Landsdale Rds. Call Jacqui 94091412, particularly if your first visit.

20 Wednesday 7.30 - 10.30pm

Meeting of Friends of Warwick Bushland at 10 Aberfoyle Place, Hamersley. Call Karen 9342 8482 or Robyn 9342 8482.

20 Wednesday to 21 Thursday

River Forum in Canberra, coordinated by Land and Water Australia. Formal thought-provoking presentations and field-based experience. Call L&WA 02 6257 3379 or visit www.rivers.gov.au.

23 Saturday 8am

Guided walk with the Friends of Star Swamp Bushland. Meet grassed area Hope St, North Beach. Call Christine 9447 2983.

23 Saturday 9am

Potting out morning at Yellagonga Nursery, Landsdale Farm School cnr Evandale and Landsdale Rds. Call Jacqui 94091412, particularly if your first visit.

23 Saturday to 24 Sunday

10am - 5pm
4TH WA ENVIRONMENT FESTIVAL Huge range of environmental displays and activities including: renewable energy, organic gardening, workshops, nature walks and art. Environmental groups invited to participate. Free entry at Naragebup - Rockingham Regional Environment Centre, Safety Bay Road (opposite Lake Richmond), Peron. Call Bob or Ann 9591 3077.

30 Saturday 9am

Potting out morning at Yellagonga Nursery, Landsdale Farm School cnr Evandale and Landsdale Rds. Call Jacqui 94091412, particularly if your first visit.

What's on

Perth Metropolitan Region

Bunbury/Busselton Region

Bunbury Naturalists' Club meetings and natural history talks are held every second Tuesday of the month at 7.30pm at the conference room, Lotteries House, Victoria St, Bunbury. Outdoor excursions will be on the Saturday following the 2nd Tuesday. Details for these are yet to be finalised.

Call Shirley 9791 5915, Gordon 9797 0673 or Olga 9726 3181. Visitors welcome.

For Busselton Naturalists' Club activities confirm details by checking the Busselton Margaret Times or calling Bernie on 9727 2474 (h) or 9752 1949(w), bmasters@iinet.net.au. Meetings are held at St Mary's Family Centre, cnr Albert St and Bussell Hwy. Visitors welcome.

Leschenault Community Nursery
For more information on how to be involved in the Community Nursery, call Shirley 9791 5915.

These events are forwarded for inclusion in the Swan Catchment Centre's monthly information sheet and Riverlink web site at www.wrc.wa.gov.au/swanavon as well as the Environmental Education Network

Please send us your April, May, June 2002 events by 1 March 2002.

REGIONAL REPORTS

All groups welcome visitors and new members.

Hills Region

News from Eastern Hills
collected by Jenny Johnson

We have now packed our mattocks, trowels and water bottles away for safe keeping until next April. Summer has arrived in a rush and after a dry winter we are hoping for a few thunderstorms to water our plantings over the next months.

LION MILL CREEK – Mt Helena. The Bushland Care Day in September was excellent, with 50 people helping to put 5 000 plants in the ground. A few days later we had heavy rains that settled our plantings in very well. Weed control will continue over the summer months.

ROCKY GULLY – Mt Helena. The meetings go into recess during summer whilst the landowners continue with their weeding and if necessary, watering of their new plantings.

QUARRY RESERVE – Parkerville. The Quarry group hosted the Guildford Grammar Cadets who removed rubbish and *Watsonia* and also planted along the banks of Bugle Tree Creek. Group members have carried out extensive weed spraying.

CLIFTON ST RESERVE – Parkerville. The reserve has been both edge and spot sprayed for weeds. Repairs on the log fence have been carried out to exclude horses, motor bikes and trail bikes. Unfortunately, horse riders vandalised the fence to gain access to the reserve.

KINTORE RD RESERVE – Parkerville. Dieback control has been ongoing and a welcome grant has been used to buy equipment. The Mundaring Shire has moved large rocks to block unwanted access as well as signposted the trails to encourage riders to keep on the tracks.

PARKERVILLE VILLAGE RESERVES
As part of the Water and Rivers Commission's Ribbons of Blue program we have assisted the year five class at Parkerville with monitoring the water quality of Jane Brook.

HOVEA CONSERVATION PARK
We had a well attended (about 35 people)

Bushland Care Day in June with a focus on weeding, planting and erosion control using log barriers. This entailed 'nailing' weedy tree trunks into the ground with 16mm steel bars. The nailing was necessary to deter fire wood gatherers who last year removed our logs for their winter fires.

BROOKSIDE PARK – Parkerville. This year has seen three groups of Midland TAFE students carrying out river restoration techniques in Jane Brook, such as re-aligning woody debris and in-stream planting. Mundaring Lions have also pitched in and attacked the large woody wattles with chainsaws and mattocks. The logs will be used for erosion control and the light material mulched for weed control. The end of July floods have caused massive weed germination along the banks of the brook.

For further information on eastern hills groups call Jenny on 9295 4467.

Blue Wren Friends
by Sandy and Roger Stone

The Blue Wren Friends (BWFG) are a fledgling group in Stoneville with a few eager members who welcome many more. BWFG has concentrated on planting, clearing rubbish and weeding and although there is a great deal to do we can see progress. Guildford Grammar assisted with weeding and a dedicated band of nine group members followed up by pulling out more lupins, spraying other weeds and loading them into the skip. It's amazing how many lupins were removed in a short time!

For further information on call Sandy or Roger on 9295 1468.

South East Region

Yangebup Wetlands
by Ian Morley

The main interests of the newly formed Friends of Yangebup Wetlands (FYW) are the conservation and rehabilitation of Yangebup and Little Rush Lakes and their immediate surrounding areas. Although the group officially formed in August 2001, some members have been active in the conservation of local bushland for many years. The group has been sponsored and encouraged by the City of

Cockburn environmental section, in particular Chris Beaton, Paddy Strano and Dave Bright's expertise and time have been greatly appreciated.

FYW has been active in planting and weeding days at Yangebup Lake and have held two very popular bird walks and talks with Clive Napier from Birds Australia.

For further information call Ian on 9417 7479 or Robyn on 9417 2820.

Dry times for Brixton Street Wetlands
by Regina Drummond

Although our area looks beautiful, it is very dry, with some of our monitoring bores that usually have water in them at least to January – being dry in November. Added to this, we continue to have trouble with fences being cut for trail bikes. A fence was also cut because of fire on a property backing onto the wetlands.

The Environment Minister Senator Hill visited Brixton Street Wetlands in November and as we walked through the wetlands we saw a goanna, a dragon lizard and heaps of birds.

Thanks to the unreal efforts of Nick and Elizabeth Buters we have *Watsonia* under control – though the wild oats this year grew like someone fertilised them, requiring Trevor Drummond to spend many hours on the whipper snipper.

For further information call Regina on 9459 2964.

Community action for North Lake and Beeliar
by Neil Goldsborough

The Friends of North Lake Road (FNLR) is steadily growing and over the past months has been doing plant surveys and seed collecting.

The Beeliar Conservation and Heritage Council Inc. (BCHC) initially formed to fight the alignment of Roe Highway through North and Bibra Lakes. The purpose of the BCHC is to support groups in their work for the preservation of bushland in the Beeliar Region, as well as other conservation and heritage issues that concern local residents.

For further information call Neil 9437 2410.

South West Region

Tree planting to techno music – Rockingham

by Donna Sampley

Gumboots and raincoats doubled as dancing gear as 60 people braved the dismal weather on 29 September for the Youth Tree Planting Festival at the City of Rockingham's Mundijong Road Wetlands. 3 500 trees were planted to the sounds of "techno" music during WA's third tree planting festival, an initiative of the Rockingham Regional Environment Centre, Men of the Trees and City Farm's 'Activate'. The event was sponsored by the City of Rockingham, Landcare Australia and the Centenary of Federation. The work site was the old clay pits on Mundijong Road in Baldivis which are undergoing environmental rehabilitation to create a series of lakes and represent state of the art environmental management. As part of this process the site will be transformed into a valuable educational and recreational resource.

For further information call Naragebup 9591 3077 or rrec@southwest.com.au.

Action at Market Garden Swamp

by Haakon Nielsen, UBC

Market Garden Swamp in Spearwood is a chain of wetlands with some outstanding natural values. The wetlands make an interesting transition from freshwater to salt water that can be observed by the change from freshwater paperbark (*Melaleuca raphiophylla*) to saltwater paperbark (*Melaleuca cuticularis*). The area has some serious management problems mainly caused by the planning and development of roads, subdivisions and parks right into the original wetlands, leaving no natural buffer. This has led to weed invasions, prowling domestic animals and an altered water regime.

The Friends Group formed on 27 September at the Cockburn Council Chambers and appointed Paula McLay as Convenor and Ruth Maric as Secretary. The first activity was a rush planting day where the group planted 1 000 Shore Rushes (*Juncus kraussii*) in one and a half hours – and were keen to do more. The planting was done in constructed

sediment trapping basins around the wetlands and the day was supported by the City of Cockburn.

For further information call Haakon 9420 7207 or ubc@inet.net.au.

Working together at Woodman Point

by Haakon Nielsen, UBC

On the coast, just over the ridge from Market Garden Swamp lies Woodman Point Regional Park, managed by the Department of Conservation and Land Management (CALM). The Woodman Point Preservation Group (WPPG) formed on 1 November and elected Geoff Sach as inaugural Convenor with Lyn Sach and Zoe Inman as secretaries. The WPPG is interested in preserving and enhancing the natural values of Woodman Point and also in preserving relics of Woodman Point's intriguing history.

CALM is in the process of preparing a Management Plan and a separate Weed and Rehabilitation Plan, for which they are seeking community input and have pledged to support the new conservation group. To this end, WPPG is to meet CALM representatives on-site to discuss bush rehabilitation plans for Woodman Point and to work out how the group can best get involved.

For further information call Haakon 9420 7207 or ubc@inet.net.au.

North East Region

Koondoola Weedbusting

by Alice Stubber

Friends of Koondoola Regional Bushland "got Weedbusting with schools" in the City of Wanneroo again this year. The focus was to educate school students about weeds in their local bushland through class-room activities, followed by hands-on, outdoor activities. Montrose, Hainsworth, Waddington, Girrawheen High, Quinns Beach Primary and Mindarie Primary Schools took up the challenge. Credit goes to the teachers who had embraced the project wholeheartedly – the children did know what weed they were removing, many also knew the name, where it had come from and why it was a weed.

The students were fantastic! They made quick work of the weeds as well as learnt about what was a native plant and what was a weed. One school treated us to a Weedbuster song and dance by six girls complete with one garden glove and a Weedbuster Tattoo on their foreheads. The girls sang "Who you going to call" – all the students replied "Weedbusters!"

Thanks also go to the City of Wanneroo for community funding to continue the Weedbuster program, Renata Zelinova from Quinns Rocks Environmental Group for her assistance and the Bennett Brook Catchment Group for managing the funds.

For further information call Alice on 9306 3221.

Fire crew cook up a storm at Warwick

by Karen Clarke

We had a very successful Bushland Care Day in October. Thanks to Ecoplan, AlintaGas and Conservation Volunteers for sponsoring and providing support for this event and to the 25 volunteers who helped remove a huge amount of environmental weeds, a fitting task for Weedbuster Week. Our local fire crew from Balcatta Station expertly cooked the bbq lunch – with not a burnt sausage in sight!

Optus has recently installed mobile phone facilities in our bushland in an environmentally sensitive manner, with the various sub-contractors involved all genuinely interested in bushland conservation. This involved Taggart Bush Revegetation Services being contracted to harvest useful material from the site, prior to clearing and to undertake rehabilitation in an adjacent degraded area.

It's not easy conserving bushland in a Parks and Recreation Reserve. Council has proposed various developments including an expanded picnic area with barbeques, a permanent dog training facility and a skate board park to justify re-opening a toilet block that was scheduled for demolition. None of these proposals are compatible with bushland conservation.

For further information call Karen 9342 8482 or Robyn 9342 6840.

REGIONAL REPORTS

Corporate care of Bennett Brook by Jacqui Otago



Woodside Energy Corporate Care Day volunteers plant 1 000 *Juncus pauciflorus* rushes in a record time of one hour.

On Friday 16 November a small team of enthusiastic volunteers from Woodside Energy Limited inundated the Bennett Brook Catchment Group (BBCG) Environment Centre in the

second Corporate Care Day held in conjunction with the Swan-Canning Cleanup Program.

The team of volunteers from the Exploration and Production Information Technology unit planted more than 1 000 *Juncus pauciflorus* rushes in the damp, muddy edges of Bennett Brook in record time. Supervised by BBCG's project officer, Sara Winter, the team also had time to weed a significant area of the foreshore, learning much about weed infestation and associated problems at the same time and spent the afternoon testing water quality.

BBCG gratefully acknowledges the contribution of the Corporate Care Day volunteers and looks forward to hosting many more such days.

For further information call Jacqui on 9377 0444.

North West Region

Celebrating Yellagonga volunteers by James Treloar

We had our end of year party, courtesy of the International Year of the Volunteer grant, on 25 November and over 60 people came along. It was good to meet some new members and to celebrate this year's achievements with our regular members and other Friends groups. After a delightful lunch, we had Barry Higgins perform humorous bush poems and Mike Bamford describe the habitat

requirements of the animal survivors in our urban environment.

Considering the weedy and dry year, we are going to conduct a plant maintenance program over summer. We will weed, water and mulch the 2001 revegetation areas and monitor the survival rate to see if the increased effort is worth it. Our other focus over summer will be our expanded nursery where we expect to have over 30 000 plants potted out and ready for next year's planting

For further information call Jacqui on 94091412 or visit www.go.to/yellagonga.

Central

Learning from doing at Mt Henry by Jan King

Weeding and monitoring have been the emphasis of the activities for the Mt Henry Peninsula Conservation Group this season. Observations in the area that had been sprayed for veld grass, indicate many other weed species are present. Pleasingly however, regular short sessions to control weed spread in our better areas have uncovered about ten species of native plants not included in the Mt Henry Peninsula Management Plan species list. Also, since rabbit baiting was carried out by the City of South Perth in April, we have noticed the establishment of species that had been slow to revegetate following the fire, namely *Allocasuarina humilis* (Dwarf Sheoak), *Acacia lasiocarpa* (Dune Moses) and *Macarthuria australis*, as well as a proliferation of *Burchardia umbellata* (Milkmaids) and *Caladenia flava* (Cowslip Orchids). These results are encouraging and confirm the value of controlling the rabbit population in concert with weed control following a fire.



Susan Cromb, Di Jacoby and Jacque Harvey celebrating the Years achievements with Friends of Yellagonga

Other follow-up activities have included maintaining the firebreak and improving the appearance of the areas beside the track, drawing positive comments from joggers and walkers on how well the bushland looked this Spring.

For further information call Jan on 9337 6296.

Council and community in South Perth by Andrew Thomson

Working in close cooperation over the year with City of South Perth staff Mark Taylor (Parks and Environmental Manager), Sean Smith (Environmental Officer), Katrina Hill, Clare Thomas and Jim Box (Bush Maintenance Workers) has been most rewarding.

Community volunteers have been busy. Early mornings have seen Angela Carr and Nancy Long weeding at the Mt Henry Public Open Space dental site. Nancy Long and Warwick Boardman were involved in the Swan Canning Cleanup Program, and several members of the City of South Perth Environmental Association, lead by Brian Andrich were involved with the Council, in the Yellowfish Road program, to educate the community in keeping our drains and rivers free from pollution.

Woody weeds and bulbs are well under control and spot spraying of Sour Sob (*Oxalis pes-caprae*) seems to have been effective. On the negative side, getting a reliable spray contractor has been a problem and we will all need to work very hard over summer to remove "fire weeds" as the late showers have given grasses a new lease of life.

Margaret and I attended the Peoplescape display and concert in Canberra.* The City of South Perth did an excellent job in presenting their eccentric model of me (refer to cover story, Ecoplan News, Spring 2001) – it was in the top 2% for creativity. Many thanks, it is nice to be appreciated.

For further information call Andrew 9450 3424.

Group Profile: Bunbury Naturalists' Club



The beginnings

The Bunbury Naturalists' Club began in response to a 1997 challenge thrown out by Neville Marchant whilst speaking at the Bunbury Festival of Arts and Nature. "People still

snigger at the name of the club – apparently they entertain visions of us as nudists!!" elaborated Shirley Fisher, Club Secretary and active organiser. Dr. Gordon Paine was elected as the inaugural president, a position he still retains and the Club has a program of monthly meetings with guest speakers, monthly excursions and many projects.

Franklandia Reserve

"Within the first year our newly fledged club asked the local CALM staff if there was a reserve that needed loving care, and so, we took on the stewardship of a then unnamed forty hectare reserve sandwiched in farmland on the North Boyanup Road", explained Shirley. This reserve had been saved from sandmining because of its substantial population of the rare *Franklandia triaristata*. With Lotteries Commission Gordon Reid Foundation for Conservation funding and extra volunteer effort, the reserve was fenced, sixteen loads of rubbish and ten car wrecks removed, and a sign proudly erected naming it "Franklandia Reserve".

Eight permanent recording quadrats were set up within Franklandia Reserve to cover the different landforms and vegetation associations and an herbarium collection was started with help from Greening Australia WA. Later, the reserve was selected by Dr. Vi Saffer, the project officer of a WA Naturalists' Club's

project funded by the Lotteries Commission, Gordon Reid Fund, for research on sustainability of remnants. Her research focus was the presence of pollinators across seasons. Four of the original quadrats were used in this study and club members committed themselves to the quarterly monitoring of birds and bees for two years! "These regular visits actually kept us up to date with our observations of the condition of the bush, and another highlight was the gaining of new members through their involvement in this work" reflected Shirley.

Getting to know the plants

When CALM was approached about housing the Franklandia Reserve herbarium specimens, they suggested the Club process the 3 000 specimens that were already at the Bunbury office. The Club rose to the challenge, and it has taken two years to have all the specimens vouchered at the WA Herbarium with members working at the CALM library every Tuesday morning. "We gained a great sense of achievement from doing this, especially now that new specimens are also being collected" said Shirley. Added to this, the group is frequently called on to help plant or collect seeds of Declared Rare Flora species. "CALM officers are so pleased to have our help, that they treat us like honoured guests".

Variety

The club continues to find other worthwhile environmental tasks needing volunteer assistance. Activities have included tracking relocated ringtail possums on Leschenault Peninsula, Wildflower Society flora surveys, bird atlassing, bird banding and fungi mapping. Many members are also regular volunteers at the Leschenault Community Nursery, helping to collect seed, train others and grow endemic species



Members of Bunbury Naturalists' Club setting up the first Quadrat at Franklandia Reserve.

for local landcare and rivercare works. The club is also involved with the WA Herbarium's SWALE project. This is a coastal vegetation survey along a kilometre transect, shoreline to inland. Bunbury is one of four centres involved.

The club arranges a Saturday excursion once a month and an 'away' camping trip each year. "In late 2001 we will have camped our way to the Eyre Bird Observatory with former caretakers and Club members George and Rita Watkins as our guides" enthused Shirley.

Future plans

"We hope to see a community space set up in the proposed regional museum, where groups such as the Naturalists' Club can meet, work and store reference material so that it is accessible to the public" explained Shirley. Dr. Gordon Paine, the club president, is particularly keen on this aspect and is involved with the working party for the museum.

Even more ambitiously the club would like to see the Central Forests Region Regional Herbarium housed in a custom built environment. "Building on the club's energy and achievements, we even gave the herbarium brief to TAFE students as a design project!"

Final reflections

"Although this is a small club, or perhaps because it is a small club, the group has undertaken valuable projects that have kept members interested and committed" reflected Shirley.

Contacts

Gordon Paine 9797 0673 (program) or Shirley Fisher 9791 5915 (projects).



Olga, Shirley and Lynn processing the specimens from Franklandia Reserve.

Resources

Bush regeneration advice offer

The Australian Association of Bush Regenerators (WA) has nominated Saturday 11 May as an opportunity to assist a bushland care group with on-site advice. The intent is for experienced bush regenerators and AABR(WA) members to meet with groups on site to discuss bushland care problems and how these might be tackled.

For more information call Janice on 9381 1479 or aabr@wrc.wa.gov.au.

New contacts for the Swan Catchment Centre (SCC)

The SCC has relocated to 80 Great Northern Highway (cnr Bishop Road) Middle Swan. New contact details are: Postal address: PO Box 1906, Midland, 6936. Phone: 9374 3333, Fax: 9374 0685, E-mail: saicc@wrc.wa.gov.au. Web: www.wrc.wa.gov.au/swanavon. SCC is open Monday to Friday 8:30am to 4:30pm (unless by prior arrangement) so call in to take advantage of the variety of services and information the centre has to offer.

2002 Eureka Prizes

The Australian Museum has launched the Eureka Prizes for 2002, including the \$10 000 Allen Strom Eureka Prize for Environmental Education (sponsored by the NSW EPA). The prize, which honours Allen Strom's untiring devotion over 40 years to conservation and

education, encourages excellence in the design, implementation and evaluation of Environmental Education programs.

The prize will be awarded to an innovative, leading edge program undertaken within the three year period ending 31 December 2001. If you know of potential entrants/nominees please let them know about this prize.

Entries/nominations close on Friday 17 May 2002. For more information and entry forms visit www.amonline.net.au/eureka or call 02 9320 6320.

Perth Groundwater Atlas on the net

The Water and Rivers Commission has designed this Atlas to provide a better appreciation of Perth's water resources. In this revised edition, groundwater information has been supplemented with an account of Perth's surface water resources and the different types of wetlands which exist on the Swan Coastal Plain including lakes, estuaries and floodplains are also identified. Wetland categories and their definitions can be identified using the wetland maps. The website is www.wrc.wa.gov.au.

Tools for bushland care?

In preparation for this edition of Ecoplan News we began to gather information on tools (e.g. mattocks, secateurs, survey equipment) for sharing and discovered

there are a number of councils (such as Nedlands and Mundaring) that manage this practical resource for community groups. If there are more organisations that provide such a service can you please contact the Ecoplan coordinator so we can publicise this information.

New environment centre

Piney Lakes Environmental Education Centre in the City of Melville has just been opened. The Centre, partly funded by a Lotteries Commission grant is completely self-sustaining. Set in a bush reserve of 68ha (cnr Leach Highway and Murdoch Drive, Winthrop) it is not connected to power, water or sewerage. Power is renewable (wind and solar), toilets are biological and water is collected off the roof and treated with UV light. It has an outdoor amphitheatre, laboratory and two large rooms that hold 120 people in total. For more information about activities and hire contact the Centre on 9364 0651.

Weed management pamphlets

The Environmental Weeds Action Network has completed another pamphlet in their "managing weeds in bushland" series. The pamphlet Woody weed control: Brazilian (Japanese) Pepper and other weeds has been published with assistance from the Lotteries Commission and is available from the Swan Catchment Centre on 9374 3333 or saic@wrc.wa.gov.au.



If not claimed within 7 days, please return to
Westralia Square, 141 St Georges Terrace, Perth, Western Australia 6000
PO Box K822, Perth, Western Australia 6842

Department of Environmental Protection
Government of Western Australia

Ecoplan News
is published by the
Department of Environmental Protection

POSTAGE
PAID
PERTH
WEST.
AUST. 6000