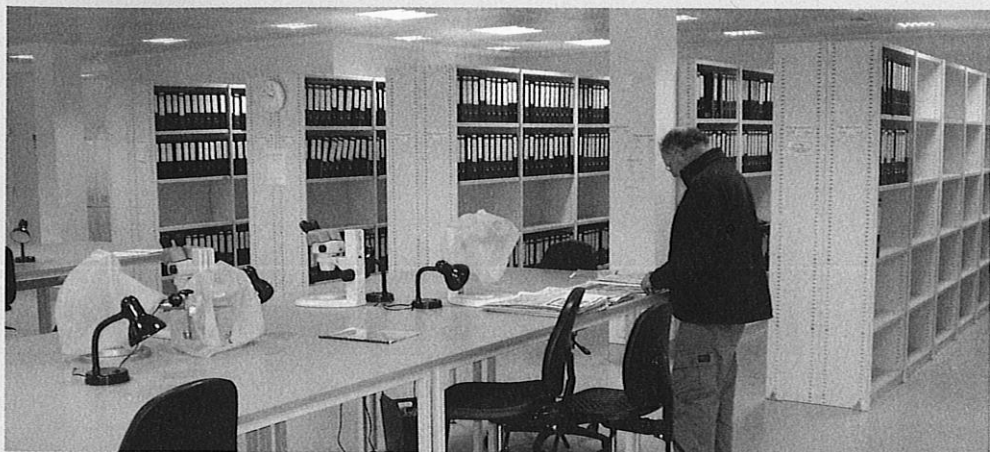


## Now recruiting at the WA Herbarium *By Cheryl Parker*



*The WA public reference herbarium contains thousands of flora specimens and is equipped with microscopes and computers for community use. Photo – Skye Coffey*

In 2011 the WA Herbarium moved its research collection and reference herbarium into the WA Conservation Science Centre in Kensington. The herbarium was temporarily closed during the move and opened in March 2012. This new state-of-the-art complex is at the forefront of herbarium facilities in Australia.

The plan to move the herbarium to new premises began in the late 1990s when it was clear the old building, despite being designed for expansion, had reached capacity. This is not surprising given the dynamics of plant research in WA and the enviable number of new species continuing to be discovered each year. The new herbarium is designed to house

up to 1.2 million specimens, and the current research collection of just over 750,000 specimens including flowering plants, moss, lichens, macro-fungi, marine and fresh water algae is now safely stored in purpose-built water and insect-proof boxes, inside climate-controlled vaults.

The reference herbarium houses representative specimens of WA's flora including threatened and priority species and is open to the public Monday–Friday from 8am–5pm (except public holidays). The herbarium is recommencing its volunteer program and is looking for new recruits. For more information visit [www.dec.wa.gov.au/content/category/41/831/1821](http://www.dec.wa.gov.au/content/category/41/831/1821).