



# Diversity

## Yilgarn District Threatened Flora and Communities Recovery Team Newsletter December 2008 Vol 3, Issue 1



Department of Environment and Conservation  
Our environment, our future



### Welcome to Diversity

*Diversity* is the newsletter of the Yilgarn District Threatened Flora and Communities Recovery Team. This team coordinates the implementation of the Yilgarn District Threatened Flora Management Program (YDTFMP) and a variety of Interim Recovery Plans. *Diversity* promotes the involvement of DEC volunteers in participating in rare flora conservation activities in the Yilgarn District. Issued three times per year, this newsletter will provide information to community groups, shires, Recovery Team members, threatened flora and other volunteers, other organisations and departments involved in the program, as well as the general public.



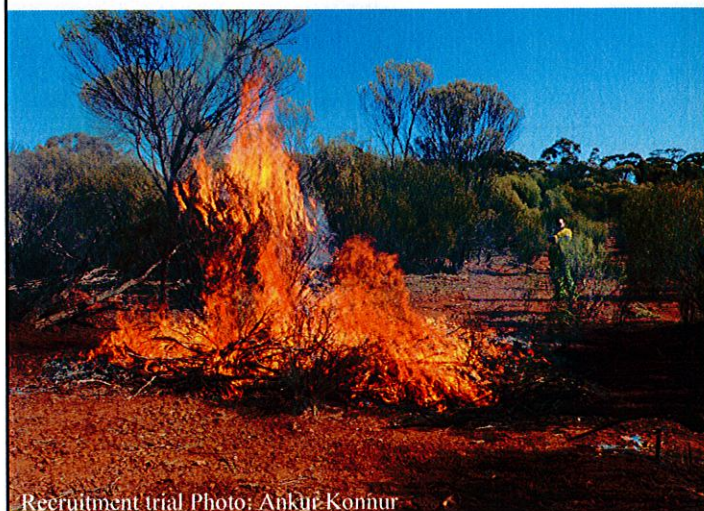
*Daviesia microcarpa* seedlings Photo: Hayden Cannon

### Recruitment of Norseman pea

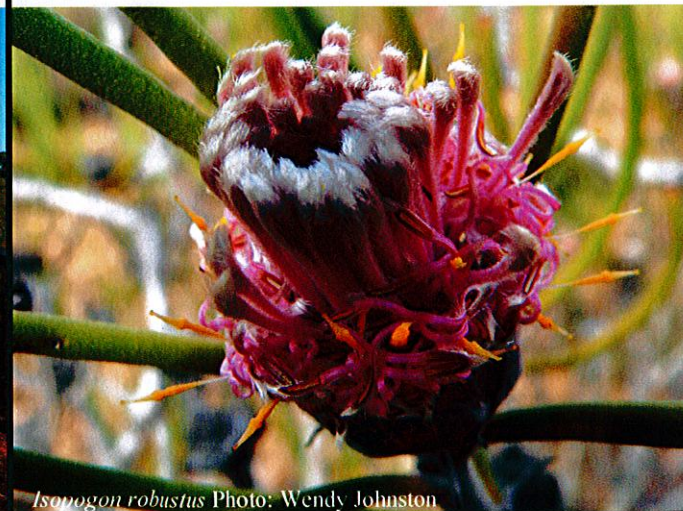
The Norseman pea (*Daviesia microcarpa*), is a critically endangered species which occurs in two disjunct locations in Norseman and Southern Cross. During a wildfire in 2007 the populations near Norseman were destroyed. In May 2008 an induced recruitment trial was conducted at the Southern Cross population to test what triggers the recruitment of the species. Fire, physical disturbance and smoke water were tested in a number of fenced trial plots. Monitoring in August 2008 located 90 seedlings which germinated in the two fire plots. In November 2008, 24 seedlings were still surviving and an automatic water system has now been set up to help the seedlings survive the summer. DEC Yilgarn District has been working closely with St Barbara Mining Limited as this critically endangered species occurs on mining tenement.

### Critical habitat mapping of robust coneflower

The critical habitat of the Robust coneflower (*Isopogon robustus*) was assessed in 2007 to identify areas where this critically endangered species may be found. Robust coneflower is found only near the Parker Range where it grows on top of mostly bare ridgelines amongst open low shrub-land. In October 2008 a number of the recommended areas were searched for new occurrences of the species. Unfortunately no new populations were located on this occasion, however, there are a number of other areas of interest to search in the future. A survey of the known population located and mapped 455 live plants which is a considerable population extension as in 2006 only 217 plants were located.



Recruitment trial Photo: Ankur Konnur



*Isopogon robustus* Photo: Wendy Johnston

## Have you seen this plant ?

Jingymia mallee (*Eucalyptus synandra*) is a straggly, multi-stemmed tree which grows between 3.5 to 10 m tall. It has smooth powdery white bark which sheds in ribbons, over pink and brown bark.

The dull grey-green juvenile leaves are narrow, up to 9 cm long and 1.5 cm wide. Adult leaves are dull light green, linear, erect and are 7 to 20 cm by 0.3 to 1.6 cm. The adult leaves taper gently to both ends.

Jingymia mallee produces flowers that are creamy, although they mature to pink between December to March. The fruit are hemispherical (excluding the disc), and are 3 to 5 mm by 6 to 14 mm. The discs are conical and are 2 to 5 mm high. The seeds are pale brown and D-shaped.

Jingymia mallee currently meets World Conservation Union Red List criterion for Vulnerable. It has a geographical range of about 300 km and occurs from Morawa to Beacon. The species inhabits sand or sandy-loam over laterite in flat or undulating country along with scrub or heath.

The Department of Environment and Conservation (DEC) is keen to work with the community and land managers to conserve Jingymia mallee.

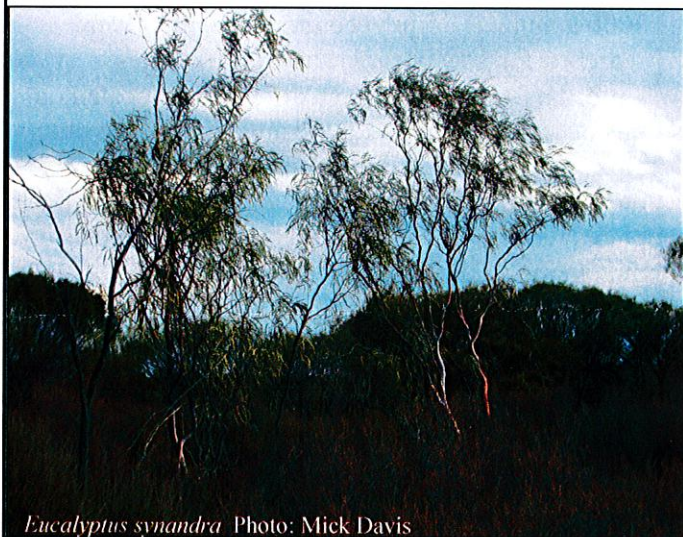
If you have seen this plant or think you may have habitat on your property that would support this species, we would like to hear from you. Contact the flora conservation officer at DEC's Yilgarn District office in Merredin on 9041 2488.



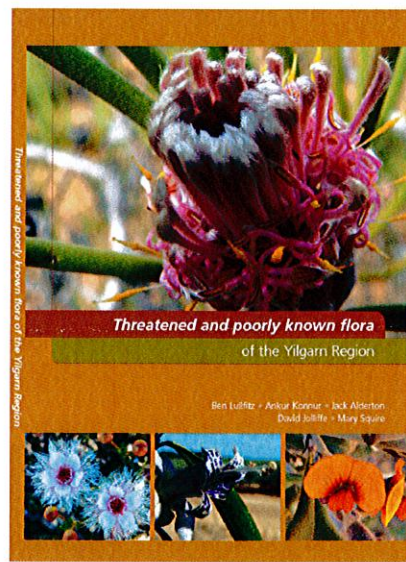
*Eucalyptus synandra* Photo: DEC Merredin

## New book release

In August 2008 a book entitled the 'Threatened and Poorly Known Flora of the Yilgarn Region' was released to help save rare flora in the Wheatbelt from extinction. The book was produced by DEC Yilgarn District and was funded through the Avon Catchment Councils 'Back from the Edge' project. The book focuses on the unique native flora of the Yilgarn region, which is well known for its floral diversity, rarity and uniqueness, with many species occurring nowhere else in the world. It contains beautiful pictures of threatened and priority wildflowers and useful information which can be used as a reference by community members and natural resource managers to identify the poorly known native flora in the region. Copies of the book can be purchased from the Wildflower Society of Western Australia (Nedlands, Merredin and Mukinbudin) or by contacting DEC Yilgarn District on (08) 9041 2488.



*Eucalyptus synandra* Photo: Mick Davis



## DIVERSITY

**Editors: Ben Lullfitz and Ankur Konnur (Flora Conservation Officers)**

**33 Bates Street, PO Box 332**

**Merredin WA 6415**

**Phone (08) 9041 2488**

**Fax (08) 9041 2454**

**If you think you have seen any of the plants in this newsletter or would like any further information please contact the Flora Conservation Officer at the DEC Merredin office. Contributions to this newsletter are most welcome.**