

[View this email in your browser](#)



Issue no: 32

Friday, 12 August 2016

Welcome to Touring WA, where we share some of the latest news from the Department of Parks and Wildlife for visitors to Western Australia's national parks.

- [Potters Gorge open for camping](#)
- [Featured operator – Adventurous Women](#)
- [New campground for Margaret River region](#)
- [Are you a Park Explorer?](#)
- [Take a virtual trip and DISCOVER WA](#)
- [Great Aussie Campout 2016](#)
- [Coastal Wonders of Western Australia 2017 Calendar](#)
- [LANDSCOPE magazine Winter 2016 available now](#)
- [Tourism Western Australia launches #JustAnotherDayinWA](#)
- [Nature Play WA's Children and Nature Conference](#)
- [Expression of interest: Skywalk Kiosk - Kalbarri National Park](#)

Parks and visitor information

Potters Gorge open for camping

The upgraded and expanded Potters Gorge campground in [Wellington National Park](#) is now open.

Featuring new toilet blocks, barbecue shelters, access roads and paths, the campground contains 54 camp sites that can accommodate caravans, camp trailers



visitors to Potters Gorge will be completed in the near future. In the meantime there will be some construction noise in daylight hours.

Take a short drive or walk from the campground and drop in to say hi to Diane and Stephen at [Kiosk at the Dam](#). They manage camp site bookings, can provide information on activities in the park and also sell meals and snacks made in-house or sourced locally, coffee, drinks and ice creams as well as mountain bike hire. Call ahead to book your camp site and whether you are there overnight or just visiting for the day, make sure you order one of their delicious burgers!

The upgrade to Potters Gorge is part of the State Government's \$21.05 million *Parks for People* initiative, funded by Royalties for Regions which is aimed at encouraging more people to experience the State's many spectacular natural areas and provide affordable holidays for families.



Featured operator – Adventurous Women

If you're looking to connect with like-minded women, share great experiences and re-ignite your adventurous spirit then why not join an [Adventurous Women Tour!](#)

Adventurous Women provide active and unique tours specifically for women. All tours are designed and run by women in a fun, safe and supportive environment.



Types of tours include bush walking, camping, kayaking, cycling, weekends away, extended tours and social walks. There is something for every woman.

When touring with *Adventurous Women* you can expect a variety of experiences, small group numbers, well rounded itineraries, professional and fun-loving guides, fantastic food and great company.

Join *Adventurous Women* to discover new places, try new things and meet new people www.adventurouswomen.com.au.

Special Offer:

10 per cent discount off any full priced tour (valid - one tour per person, for bookings received up until December 2016. Enter the code 'PARKS' in the comments box when booking.)

A new \$2.5 million campground will be built at the historic Jarrahdene Mill site in [Leeuwin-Naturaliste National Park](#).

Site works are about to commence at the Jarrahdene campground, near the Boranup forest about 20km south of Margaret River.

The campground, to be built by the Department of Parks and Wildlife, is being developed under the *Parks for People* Caravan and Camping initiative and funded by Royalties for Regions, as part of the Western Australian Caravan and Camping Action Plan 2013-2018.

This exciting new campground will have 45 individual camp sites and two group camping areas in a beautiful jarrah, marri and peppermint forest setting.

The Jarrahdene campground is expected to be completed by mid-2017 and, when complete, bookings can be made at [ParkStay WA](#).



Are you a Park Explorer?

Calling all Park Explorers! If you love being out in WA's national parks, how about sharing your stories and images with us?

If selected, we will provide you with free entry to national parks, free camping, a fuel allowance and even lend you camera equipment!



[Register now](#) to volunteer and share your experiences with the world.

Take a virtual trip and DISCOVER WA

You can now enjoy diving, camping, bushwalking, mountain bike riding and relaxing on a stunning coastal beach - all from the comfort of your own home!

The [DISCOVER WA app](#) lets you immerse yourself in 3D imagery of national parks, providing virtual reality tours of a range of natural areas in the State.



All you need is a smartphone, a [Google cardboard](#) or other virtual reality goggles, and

Download the app now for free at [iTunes](#) or [Google play](#) and immerse yourself in a journey around Western Australia.

Great Aussie Campout 2016

The Great Aussie Campout this year will be held on Saturday 8 October.

Set up your tents and roll out your swags for a night under the stars.

Join people from all over Australia and share the experience of camping under the stars - in your backyard, on a river bank, in a camp, a national park, a caravan park – anywhere, all on the same night.



Register for free at [Great Aussie Camp Out](#) and go into the draw to win great prizes.

To find a camp site or book your Great Aussie Campout experience in one of WA's national parks visit [Park Stay WA](#). Then download the [CampingMate app](#) and start planning!

Coastal Wonders of Western Australia 2017 Calendar

LANDSCOPE magazine's beautiful 2017 calendar is available for purchase now.

The calendar features stunning professional photographs showcasing WA's magnificent coastal wonders. The front cover (pictured) features the picturesque white sand and turquoise beaches of Cape Le Grand National Park.



With every calendar purchased there's the chance to **WIN** a wonderful wilderness camping prize in WA's magnificent south-west (details inside the calendar).

Beautifully presented, the *Coastal Wonders of Western Australia 2017* Calendar is also perfect to give as a gift to your family and friends.

To purchase, please contact Parks and Wildlife by phone: (08) 9219 9070 or (08) 9219 9071, email: customer.service@dpaw.wa.gov.au or online: shop.dpaw.wa.gov.au.

LANDSCOPE magazine Winter 2016 available now

Inside the latest issue of *LANDSCOPE* magazine dig for hidden treasure and visit the underwater wilderness of our amazing state.

Articles featured include:

- *Parks for People*: Coalseam Conservation Park
- From the ashes: Creating a future for the western ground parrots
- Dampier Archipelago underwater: A diamond in the red rock
- Southward bound: Top 10 camping spots
- Mind the Gap – safe, new state-of-the-art visitor facilities at Torndirrup National Park
- Group profile: Wildlife needing aid
- Surveying Mirima: Capturing change
- The Samuel Wright story: Digging for hidden treasure
- Adventure out: A thrilling new way to explore Lane Poole Reserve
- Understanding marine ‘connectivity’.



[Annual subscriptions](#) to [LANDSCOPE](#) are \$30 for 4 issues, including postage within Australia. Gift and Goldstar subscriptions are also available.

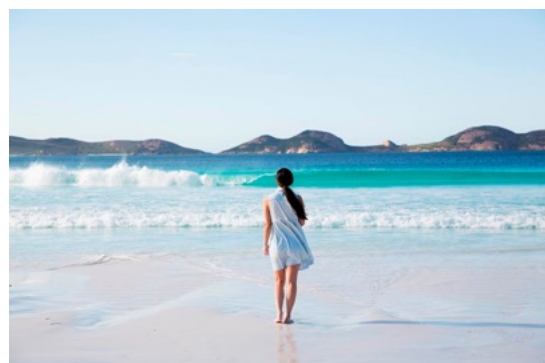
Single issues of *LANDSCOPE* are available from some newsagencies - RRP \$7.95.

Tourism Western Australia launches #JustAnotherDayinWA

[Tourism WA](#) have launched an exciting new campaign - [#JustAnotherDayinWA](#).

Featuring your experiences in WA, you can share your images and stories via social media with #justanotherdayinwa.

The campaign was developed to show people around the world the extraordinary experiences that can be found in our state. Such as the wilderness of the Kimberley, swimming with whale sharks or sampling world-class Chardonnay – it's all "Just Another Day in WA".



To get involved with the campaign tag your WA experiences with #justanotherdayinwa in the social media channels you are posting them to.

Getting your children to play outdoors has such a positive impact on their health, wellbeing and education.

[Nature Play WA](#) aims to increase the amount of time WA's children spend in unstructured play in nature and have announced the details of their first Children and Nature Conference in August.



Attendees of the conference will:

- gain insight into the connection between nature and positive childhood outcomes,
- learn practical ways to engage the working sector in reconnecting children to the natural world,
- have the opportunity to network with peers and,
- hear from the world's pre-eminent speakers on the positive impact of nature on children.

MC'd by comedian Peter Rowsthorn, the Children and Nature Conference is for anyone with a keen interest in reconnecting children with nature for the benefit of our kids, our community and the environment.

For more information and to purchase your tickets to this event visit [Nature Play WA](#).

Industry news

Expression of interest: Skywalk Kiosk - Kalbarri National Park

Parks and Wildlife is seeking expressions of interest from suitably qualified individuals or organisations to develop and operate a kiosk at the Kalbarri Skywalk site at West Loop in Kalbarri National Park.

[Kalbarri National Park](#) is one of WA's tourism icons providing a stunning setting for tourists to enjoy a wide range of activities. The proposed kiosk is part of a larger *Royalties for Regions* funded project that aims to reinvigorate local and regional tourism.



KALBARRI NATIONAL PARK WEST LOOP SKYWALK

The \$20 million Kalbarri Skywalk and National Park Tourist Infrastructure Project will deliver completion of road sealing to all of the park's tourist sites, expanded carparks and new visitor facilities, development of the Skywalk experience comprising two

If you are interested in this opportunity please read the [Guidelines for Submissions](#).
You are also advised to contact Matthew King on (08) 9334 0499 or at Matthew.King@DPaW.wa.gov.au.

Image credits

All Parks and Wildlife except:

Featured operator – Adventurous Women; Tourism WA



Department of
Parks and Wildlife



[Follow on Twitter](#)

[Friend on Facebook](#)

[Forward to a friend](#)

If you would like to contact us, provide feedback or are experiencing problems opening stories please email the Touring WA Team at:

touring.wa@dpaw.wa.gov.au.

Copyright © 2016 Department of Parks and Wildlife, All rights reserved.

[unsubscribe from this list](#)

[update subscription preferences](#)

<http://us5.campaign-archive2.com/?>

[u=517dd10f77c668193ebf249c0&id=c370b2ee98&e=2954b5e6c8](http://us5.campaign-archive2.com/?u=517dd10f77c668193ebf249c0&id=c370b2ee98&e=2954b5e6c8)