

[View this email in your browser](#)



Wish you were here? You can be. Book your Lane Poole Reserve campsite online now.

**Issue no: 40**

Friday 31 August 2018

Welcome to *Touring WA*, where we share some of the latest news from DBCA's Parks and Wildlife Service for visitors to Western Australia's national parks.

In this issue, explore Wellington National Park, be blown away by some incredible images of winter in the south-west, purchase your 2019 *LANDSCOPE* calendar and so much more!

- [Exploring Wellington National Park - book online now](#)
- [Camping close to Perth at Yanchep!](#)
- [Snow in WA!?](#)
- [OMG at The GAP](#)
- [Look out for Beach Emergency Number signs](#)
- [Purchase your stunning 2019 calendar now](#)
- [Fun for kids in the springtime school holidays](#)
- [Have you seen this pest?](#)
- [Get outdoors this October](#)

## Parks and visitor information

Exploring Wellington National Park - book online now

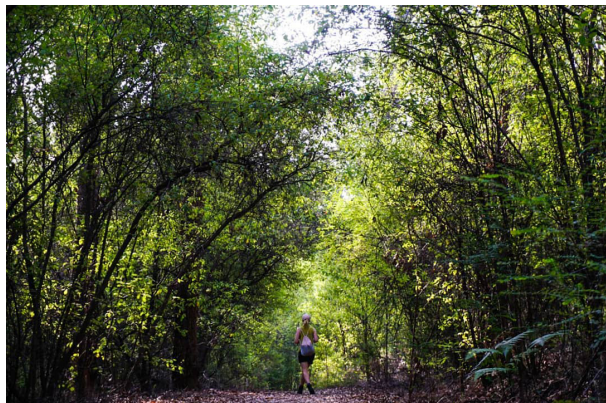


[Wellington National Park](#) is home to beautiful jarrah, marri and yarri forests. The Collie River flows through the valley in the heart of the park forming stunning pools which are perfect for a dip on a summers day. Spring is a great time to visit for magnificent shows of colourful wildflowers and, if you're lucky, at any time of year you may spot a unique native animal.

This beautiful park is only a two-hour drive from Perth which makes it an ideal day trip, but there are some lovely little places to camp if you would like to stay longer.

There are four campgrounds to choose from - Potters Gorge, Honeymoon Pool, Gelcoat and Stones Brook.

[Potters Gorge Campground](#) can accommodate all types of camping such as tents, caravans and campervans and is set on the shores of Wellington Dam in the shade of the jarrah and marri forest. There are gas barbecues, picnic tables, toilets and a dishwashing area in the shared camp kitchen.



[Honeymoon Pool](#) and [Stones Brook](#) campgrounds are suitable for tents only and have gas barbecues, toilets and a

[Gelcoat](#) is an open campground that can accommodate small groups camping together in tents and has picnic tables and toilets.

It's a little too cold for swimming this time of year but there are so many other things to do.

You can hire bikes and ride the mountain bike pump track, go fishing, walk the trails, take in the views of the Collie River Valley from the dam lookout, canoe, kayak and at night, go stargazing or possum spotting.

Even better, at this time of year it's nice to huddle around a warm campfire, toast some marshmallows and just enjoy the peace and quiet.



If camping isn't for you, [Kiosk at the Dam](#) have glamping available too.

Campgrounds can be booked up to 180 days in advance but they must be booked before you go.

To book your campsite at Wellington National Park visit [Explore Parks WA](#).

### **Would you like the chance to explore Wellington National Park on us?**

If you are available to go camping between the 8 October to 4 November for 2-3 nights and, have an active Instagram account (not private) send us an email at [touring.wa@dbca.wa.gov.au](mailto:touring.wa@dbca.wa.gov.au).

We will book and pay for your campsite (for a maximum of 4 people) at one of Wellington National Parks campgrounds and all we ask is you take lots of pics of your experience, share them on your Instagram account and tag us

[@exploreparkswa](#).

---

### **Camping close to Perth at Yanchep!**



Brand spanking new facilities at [Yanchep National Park](#) will make your camping experience even more enjoyable.

New toilets, a communal firepit and a new barbecue shelter have recently opened at the Henry White Oval Campground.

The campground is suitable for all types of vehicles including tents, caravans, campervans and camper trailers.

Yanchep National Park is only a one-hour drive from Perth which makes it a great day trip, overnigher or a weekend escape with the family.



While you are there you can visit the koalas, explore an ancient cave, hike a trail, spot a western grey kangaroo or just relax and enjoy the peace and quiet.

Book your weekend escape now on the [Explore Parks WA website](#).

---

**Snow in WA!?**



It happens – sometimes in the middle of winter, a huge cold front will come through and dump a frosting of snow on the highest peak in Stirling Range National Park.

In early August, a few people braved the freezing conditions and climbed Bluff Knoll to experience the spectacular snowy event, spectacular for WA.

For more info on visiting Stirling Range National Park visit the [Explore Parks WA website](#).

---

**Need a National Parks Pass? [Click here to purchase one online.](#)**

---

**OMG at The GAP**



WA has had some wild and woolly weather over the past couple of weeks.

The Southern Ocean put on a magnificent show at The Gap with huge swells and crashing waves that exploded spray high above the 40m viewing platform, soaking visitors.

The Gap is a spectacular experience any time of year whether it's the gentle heaving of calm seas to the buffeting rush of wind and spray of winter storms, it's definitely worth a visit. For more information, visit the [Explore Parks WA website](#).

---



Next time you are visiting the beach, take note of the new Beach Emergency Number (BEN) signs.

Each sign displays a unique code providing specific beach access location information for emergency services.

Emergency services will be able to quickly and accurately find the location you are calling from.

Not all beaches will have a BEN sign but there is an app you can use. The Emergency+ App uses GPS to help a triple zero caller provide location details to emergency services.



The app is free to download at [iTunes](#) and [Google Play](#).

For more information on Beach Emergency Number signs visit the [SharkSmart website](#).

---

### Purchase your stunning 2019 calendar now

The Western Australia 2019 Calendar presented by *LANDSCOPE* magazine is now available.

Stunning photographs of Western Australia's incredible biodiversity are captured in the 2019 calendar.

month has a stunning image making this beautifully designed, spiral-bound calendar a visual joy to browse through.



With every calendar purchase there is a chance to win a two-night family camping getaway at Hamelin Bay Holiday Park, in one of WA's most loved scenic holiday spots - the [Leeuwin-Naturaliste National Park](#), in the Margaret River region.

Purchase a copy for yourself or as a gift for family and friends for just \$14.95 from newsagents, good bookstores and from the department's online shop at [shop.dbca.wa.gov.au](http://shop.dbca.wa.gov.au), or by contacting (08) 9219 9000.

---

### Fun for kids in the springtime school holidays

Whether you're in Perth or in the Southern Forests of the beautiful south-west, these super fun activities are sure to keep the kids entertained over the school holidays.



[Nearer to Nature](#)'s Sunlit Spring calendar has activities for all ages such as Downy Ducklings, Sense-sational Scavenger Hunt, Swan River Sailing and many more.

Visit the [Valley of the Giants Tree Top Walk](#) in the spectacular tingle forest near Walpole and Denmark for the Spring Holiday program including Ranger Guided Walks, Bug Hunts, Forest by Night and heaps more.

Book your [Perth school holiday adventures](#) here and book your [south-west school holiday adventures](#) here.

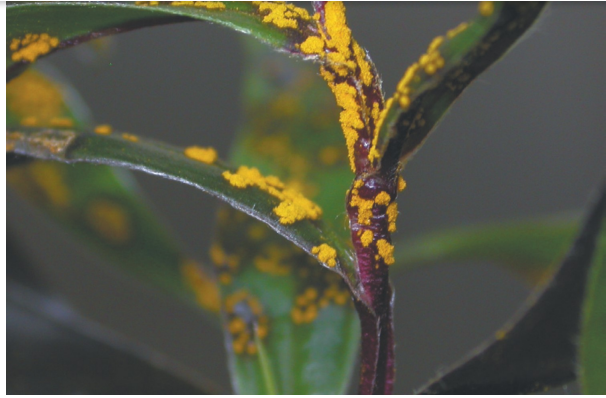
---

### Have you seen this pest?

Myrtle rust is a serious airborne disease that attacks and kills plants belonging to the Myrtaceae family.



peppermint trees are vulnerable to the fungus which produces bright yellow to orange clumps of powdery spores.



It has not been detected in Western Australia (or South Australia) yet, but is present in every other state and territory.

Your help is needed to keep it out of WA as attempts to eradicate the fungus in infested areas have shown to be impossible.



When entering WA from interstate or overseas ensure vehicles, equipment, shoes and clothing are thoroughly cleaned. Don't forget to clean hats, camera cases, backpacks and gaiters as well.

If you think you see it, do not take a sample or touch it as the spores can easily spread.

Please take photos of the plant, details about the location and immediately contact the Exotic Plant Pest Hotline on 1800 084 881 or email [info@agric.wa.gov.au](mailto:info@agric.wa.gov.au).

---

## Get outdoors this October



If you've been thinking about getting out on the [Munda Biddi Trail](#) or the [Bibbulmun Track](#) or you've always wanted to try abseiling or canoeing, October is the month to do it!

Outdoors October has been created to encourage West Australians of all ages and

Get the family together for a day trip or an overnight camping adventure in one of WA's beautiful [national parks](#) or set yourself a personal challenge such as hiking the [Cape to Cape Track](#).

There will be open days with regional clubs and organisations and, there are events and activities to get involved in on the [Outdoors October](#) website.

It doesn't matter how you get out there, be it kayak, bike, car, on foot or on a paddle board just get outside! For more information on #OutdoorsOctober visit [www.outdoorsoctober.com.au](http://www.outdoorsoctober.com.au)

---

### Image credits

All DBCA except and special thanks to:

Banner image Heidi McWilliams (Instagram @h\_mcwilliams), Charlotte and James Maddock (Instagram @cjmaddock), @wendys\_world, @two\_hikes\_socks, David Cox (Instagram @coxy\_thewildthing), Albany Advertiser - Laurie Benson, Geoff Pegg, Dr Louise Morin CSIRO.

If you would like your image featured please send it to us at [touring.wa@dbca.wa.gov.au](mailto:touring.wa@dbca.wa.gov.au)

---

For more information see the department's website [www.dbca.wa.gov.au](http://www.dbca.wa.gov.au)



Department of Biodiversity,  
Conservation and Attractions



[Forward to a friend](#)

If you would like to contact us, provide feedback or are experiencing problems opening stories please email the Touring WA Team at:

[touring.wa@dbca.wa.gov.au](mailto:touring.wa@dbca.wa.gov.au).

---

[update subscription preferences](#)

<https://mailchi.mp/dbca/touring-wa-issue-514337?e=06c14a6114>