

Children in Nature Conference, Connect with us and more...

[View this email in your browser](#)



# WA Parks Foundation NEWS

*Uniting the community to protect our natural areas*



*Perentie monitor (Varanus giganteus), Karijini National Park. Photo - Colin Ingram*

Issue Six, July 2016

Welcome to the sixth issue of *WA Parks Foundation News*, where you can find updates on the progress of the Foundation, which aims to increase community appreciation and involvement in the conservation of the State's national parks and conservation reserves.

In this issue:

- [Children in Nature Conference](#)
- [Connect with us!](#)

- [Case study: Richard Branson's koala conservatory](#)
- [Feature park: Leeuwin-Naturaliste National Park](#)
- [Video: Muddy Puddles & Painted Sunsets](#)
- [Tell us what you think!](#)

---

## Children in Nature Conference

Speakers from one of the world's best environmental education centres will explore the link between meaningful experiences in nature and learning at the upcoming Children in Nature conference, presented by Nature Play WA.



The event on 28 August promises to deliver new insights into the connection between nature and immunology and childhood brain development as well as explore practical ways to engage the corporate and political sectors to back the global movement to re-connect children to the natural world.



Keynote speakers include WA Parks Foundation Steering Committee members Parks and Wildlife Director General Jim Sharp and Professor Lyn Beazley, as well as some well-respected international visitors:

world and was among the first contemporary scientists to discuss the connection between friendly microbes and mental health.

- Ben Klasky is a US educator and the President and CEO of Islandwood, one of the world's leading environmental education centers with the core mission of creating meaningful learning experiences for urban children in nature.
- Martin Le Blanc is a founding Board Member and Vice-President Emeritus of the Children in Nature Network and a former National Youth Outings Director at the Sierra Club (America's largest and most influential environmental organisation).

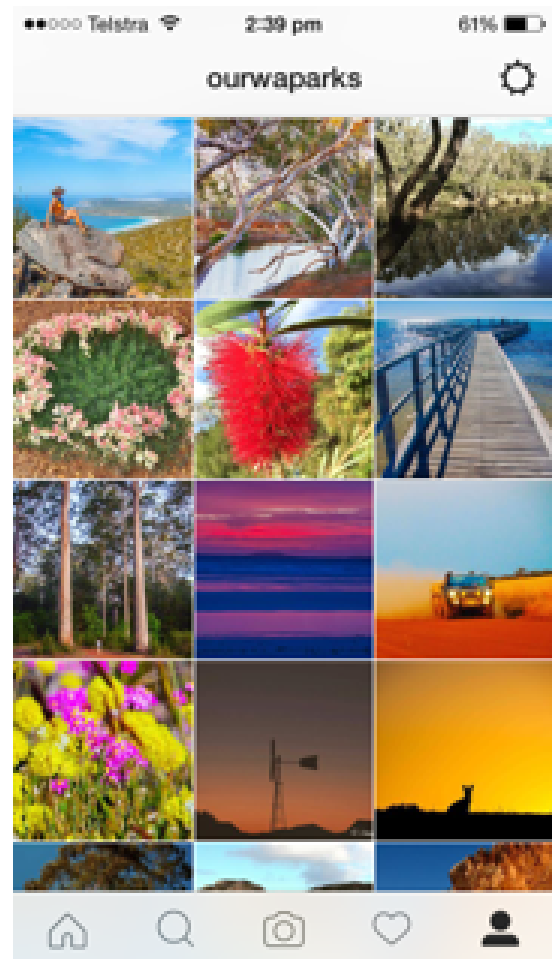
More information <http://www.natureplaywa.org.au/children-and-nature-conference>

## Connect with us!

WA Parks Foundation is now on social media! Sharing the beauty of our natural places and our love for parks is now possible through Facebook, Twitter and Instagram.

Already, it is encouraging to see how many likeminded organisations and people are online sharing a similar vision for our parks to be increasingly valued, visited and appreciated.

WA Parks Foundation will not succeed without the collective input of existing groups and people working towards the same goal. As such, our social media presence will reflect this collaborative effort and will focus on sharing, re-tweeting and re-gramming the wonderful stories, information and images being shared in the social media space as well as developing our own unique content.



Follow us, share your stories and send us any images you may have of our great state.

<https://www.facebook.com/OurWAParks/>

<https://twitter.com/OurWAParks>

<https://www.instagram.com/OurWAParks/>



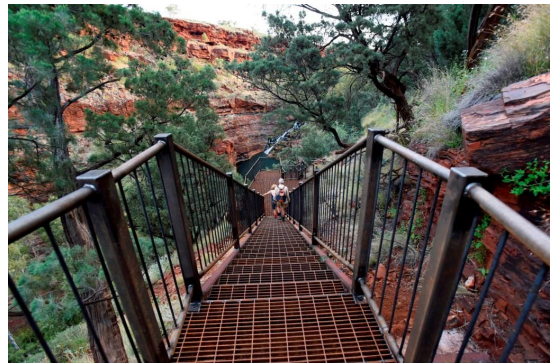


TEN Eyewitness News @channellenews · 20m  
NEWS Modern Monarch: #Queen delivers personal 'Tweet' to thank subjects. [bit.ly/28Nw9te](https://bit.ly/28Nw9te) #TenNews

## New walkway into Dales Gorge, Karijini

A new walkway and stairs have been installed in Karijini National Park allowing easy access to the popular Fortescue Falls and Fern Pool.

The 100m descent into Dales Gorge is now safer and easier, and includes platforms where visitors can stop and enjoy the view of the falls and the gorge.



The sturdy infrastructure, built just in time for the July school holidays, posed quite a challenge for Perth and Pilbara crews who managed welders, grinders and other hot works deep in the gorge.

The stairs and walkways were designed and prefabricated by staff from the Department of Parks and Wildlife Perth Hills district and then assembled onsite.

Dales Gorge camping area has bush toilets, picnic tables and gas barbecues. It is a



*Visitors descend the stairs into Dales Gorge to enjoy the stunning Fortescue Falls*

---

## **Governor receives top honours**

Western Australia's first female governor and the guiding strength in the development of the WA Parks Foundation, Kerry Sanderson, was honoured with the highest award at the Queen's Birthday Honours last month, a Companion of the Order of Australia.

The honour was "for eminent service to the people of Western Australia, to the promotion of international investment, scientific research and export opportunities, and through roles with maritime, mining, emergency management and not-for-profit organisations".

The Governor said she felt humbled to receive the honour and wanted to express appreciation to those she has worked with over the years.

"All achievements require a team effort and in my various roles I have been fortunate to have the support of a wonderful team of people," Her Excellency said.





*Her Excellency with the His Excellency, General the Honourable Sir Peter Cosgrove AK MC (Retd) receiving her medal*

## Case study: Richard Branson's koala conservatory

*“How we treat our world is a reflection of our humanity, our intelligence, our conscience, and ultimately, our very survival,” Richard Branson*

Business magnate, philanthropist and founder of Virgin Group, Richard Branson, recently converted his family’s Australian home on Makepeace Island in Noosa, Queensland into a conservancy for koalas. The 25-acre island will now be used as a base for research projects for scientific and community groups, focusing on mitigating koala mortality.

“I am proud to share our home with these wonderful mammals,” Mr Branson said. “As a resort operator we have a vested interest in sustainable tourism, and believe it is our responsibility to protect the Island’s and surrounding area’s flora and fauna.”



to the island for veterinary assessments, sampling and tagging, before being moved to areas best suited for rehabilitation.

<https://www.virgin.com/richard-branson/conserving-koalas-queensland>

---

## Feature park: Leeuwin-Naturaliste National Park

Leeuwin-Naturaliste National Park is known for having the highest visitor numbers of any national park in Western Australia. The much-loved scenic holiday spot has rugged limestone sea cliffs and windswept granite headlands.

Leeuwin-Naturaliste is bookended by two lighthouses - Cape Leeuwin and Cape Naturaliste, which give the park its name. The rugged coastline stretches 120 km from the north at Bunker Bay to the south at Augusta. The park is known for its eye-catching granite formations and iconic features such as Sugarloaf Rock and Canal Rocks.



*Above: Looking out at Sugarloaf Rock*

Surfing is popular at many well-known breaks on the western coast, such as Smiths Beach, Injidup Beach and Redgate. The ocean is wild and the weather is very changeable.



levels can enjoy exploring, particularly the popular Mammoth Cave, Lake Cave, Calgardup and Giants Cave.



---

## Video: Muddy Puddles & Painted Sunsets

'Muddy Puddles & Painted Sunsets' is a short film produced by Nature Play SA. It tells the story of childhood, how children's play has changed and how we are facing disconnection from the natural world. It captures the freedom, fun, risk and adventure that characterised the childhood we remember as adults.

[Watch the full video here](#)





## Tell us what you think!

We'd love to hear from you about what you think of *WA Parks Foundation News*, what you would like to see and if you have any questions about the progression of *WA Parks Foundation*.

[Contact us via www.ourwaparks.com.au](http://www.ourwaparks.com.au)



[ourwaparks.com.au](http://ourwaparks.com.au)

Copyright © 2016 WA Parks Foundation, All rights reserved.

Want to change how you receive these emails?  
You can [update your preferences](#) or [unsubscribe from this list](#)

MailChimp