



October 2019



A special evening at Government House

Western Australia's historic Government House was an elegant indoor-outdoor setting for a WA Parks Foundation reception hosted by our State Governor, the Honourable Kim Beazley AC and his wife Ms Susie Annus on 14 November 2019.

The evening was to thank Directors, Founding Partners, other supporters and members of the Foundation for their contribution in protecting WA's precious national parks and conservation areas.

[Read more](#)

Partnering with Deloitte on Impact Day



Picture: Deloitte Volunteers at Penguin Island

Once again, the WA Parks Foundation had the pleasure of working with its corporate partner Deloitte Australia on Impact Day. On this special day each November, thousands of Deloitte staff from around the country down their usual work tools to make a special contribution in their communities.

[Read more](#)

Capturing the breathtaking beauty of our night sky



Picture: A Galaxy Dream by Dr John Goldsmith

Western Australia's extensive network of national parks plays a vital role in maintaining dark skies to reveal the wonders of our solar system.

“Conserving and protecting our parks and reserves is essential so that people can experience the beauty of the stars in truly dark night skies. Experiencing the cosmos together with our special Western Australian landscapes is such a memorable experience,” said WA based astrophotographer Dr John Goldsmith.

[Read more](#)

Parks Chair hikes the Cape to Cape



Picture: The Cape to Cape Track features spectacular coastal and forest scenery, a fascinating geology of cliffs, caves, headlands and rock formations and an ever-changing display of vegetation and wildflowers.

The restorative powers of nature on mind and body have been extensively researched, well demonstrated and have inspired many inspirational quotes from naturalists and authors over generations.

We know that connecting with nature is good for our wellbeing and in the often quoted, variously attributed: “A walk in nature walks the soul back home.”

[Read more](#)

Explore



Cherry time in the south

The Southern Forests region has some of the most beautiful natural landscapes and charming small towns in WA's lower South West.

[Read more](#)

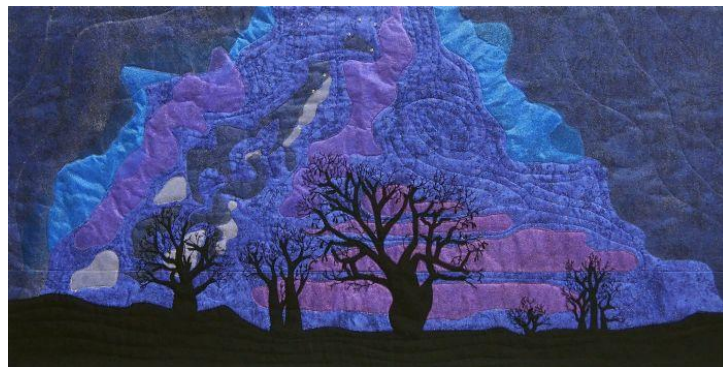


West Cape Howe – great to visit in summer

West Cape Howe National Park between Albany and Denmark abounds in scenic grandeur.

[Read more](#)

Quilting meets canvas in Astro Rocks exhibition



Picture: A Night Outback by Stella King (2019), photo by Meg Cowey

The natural environment, Aboriginal cultural themes, art and craft came together in an inspiring and beautiful exhibition forming part of the Mount Magnet Astro Rocks Fest 2019.

[Read more](#)

Outstanding contributions to WA Tourism recognised



Picture: Marielle Sengers with Ryan Zaknich, Ryan Mossny (co-owner – along with Ryan Zaknich - of Two Feet & a Heartbeat) and Tracy Shea (FACET Golden Guide Award judges), which also won the Gold Medal for Excellence in Food Tourism.

WA Parks Foundation Ambassador, Professor Ross Dowling AM was awarded the prestigious Sir David Brand Medal at the 2019 Perth Airport WA Tourism Awards.

Named for the State's longest serving Premier, and the work Sir David did to advance the state's tourism industry, the peer-judged medal is given to an individual who has made an outstanding contribution.

[Read more](#)

New chair for Bibbulmun Board



*Picture: Newly appointed chair of the Bibbulmun Track Foundation board,
Dr Kathleen Broderick*

Natural resource management professional Kathleen Broderick has been elected the new Chair of the Bibbulmun Track Foundation Board. Kathleen, who has been on the Board since 2016, has over 30 years' experience in the education and natural resource management sectors, and has contributed strongly to regional development.

[Read more](#)

Make a difference

Uniting the community through a shared love for our WA Parks to protect and conserve them for our physical and mental health, and so they can be enjoyed into the future.

Become a member

Volunteer

Donate

Become a partner

Get in touch with us
info@ourwaparks.org.au



The WA Parks Foundation is a registered charity with the Australian Charities and Not-for-profit Commission. Any donations of \$2.00 or more are eligible for a tax deduction under the Income Tax Assessment Act 1997.



© 2019 WA Parks Foundation

WA Parks Foundation News

Like

Tweet

Share

Forward

[Preferences](#) | [Unsubscribe](#)