



June 2020



Ellis Brook Valley Reserve, The Hike Collective

Nature-themed 30 Day reBoot a winner

The calendar of activities put together for the WA Parks Foundation's Spring into Parks 30 Day reBoot to promote wellness attracted much interest and involvement.

The event, made possible by support from Chevron Australia, provided an opportunity to collaborate with government, industry and community organisations to produce an engaging and wide-ranging program of community-based activities, combining on-line information resources with community-based nature-related activities to improve health and happiness by spending time in nature.

[Read more](#)

Park “smart” maps now available for Kalbarri



Nature's Window, Kalbarri National Park

The Smart Park mapping program initiated by the WA Parks Foundation has taken another step forward with the launching of three maps to help maximise the experience of a visit to Kalbarri National Park.

Home to the recently opened Kalbarri Skywalk, this spectacular national park 485km north of Perth is the most recent location to be made available on the Smart Park app. This follows the piloting of the program with four maps developed for the ruggedly beautiful Karijini National Park in the Pilbara region.

[Read more](#)

Kalbarri viewing platforms open soaring views



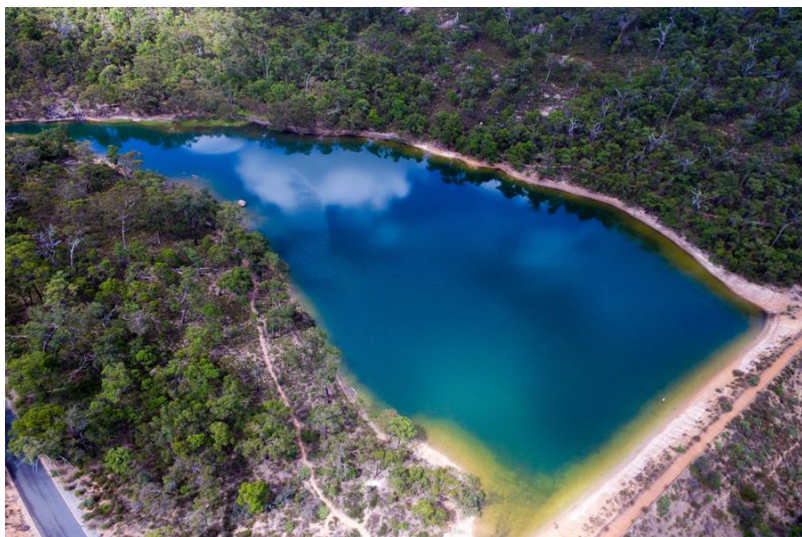
Kalbarri Skywalk

The highly anticipated Kalbarri Skywalk opened on 12 June and is expected to be a major tourism drawcard to the Kalbarri National Park and other attractions in the Mid-West region of WA.

Two cantilevered platforms provide visitors with magnificent views over the Murchison Gorge. The State Government's \$24 million project also includes a kiosk, shade shelters, toilets, parking, 22km of park roads and upgrades to Meanarra Hill and Z Bend tourist sites.

[Read more](#)

Upgrading a natural jewel



Glen Brook, John Forrest National Park

Exploration of opportunities for further upgrading of John Forrest National Park, with assessment of options, has been progressed over the past 12 months and will continue to be an important focus.

Planning for the revitalisation of this wonderful natural asset on Perth's doorstep is being undertaken as a joint project between the WA Parks Foundation and the Department of Biodiversity, Conservation and Attractions.

[Read more](#)

Ningaloo's future – your views invited



Ningaloo Reef, WA Coral Coast

What will our world heritage Ningaloo Reef look like in 2040? How can we strengthen the reef and community to be able to adapt to current and future threats? How do we balance the conservation and enjoyment of the reef with building a more diverse and sustainable local economy?

[Read more](#)

Explore



Holidaying in our backyard

Swimming with whale sharks, stargazing in the wheatbelt, marvelling at our wildflowers or discovering hidden waterfalls and forgotten gorges are just some of the unique Western Australian experiences that form part of the Wander Out Yonder campaign.

[Read more](#)



Microadventures: small but mighty escapes

In Western Australia we have natural beauty at our fingertips. With more than 31 million hectares of marine and national parks and other conservation reserves, it's not easy to see every corner of our state.

[Read more](#)

Celebrating birds through the lens



Brown Honeyeater, Geoff Ball

Birdlife Australia's third annual Photography Awards competition is open for entries until 3 August. There are nine main categories including the Portfolio prize and a Youth category for entrants under the age of 18 years. While most of the old favourites are returning, there are two new categories: Backyard Birds and Birds in Flight.

[Read more](#)

Tenacity of trees - an unmissable pictorial essay



Wind buffeted Red River Gum at Greenough, Coral Coast

Sharing inspiring and engaging videos has been a popular activity for many during the Covid-19 pandemic.

Trees – their endurance and survival in extreme situations - are highlighted at the link below.

[Read more](#)

Congratulations, Mike Wood AM



Park Ambassador Mike Wood AM, Bibbulmun Track Foundation

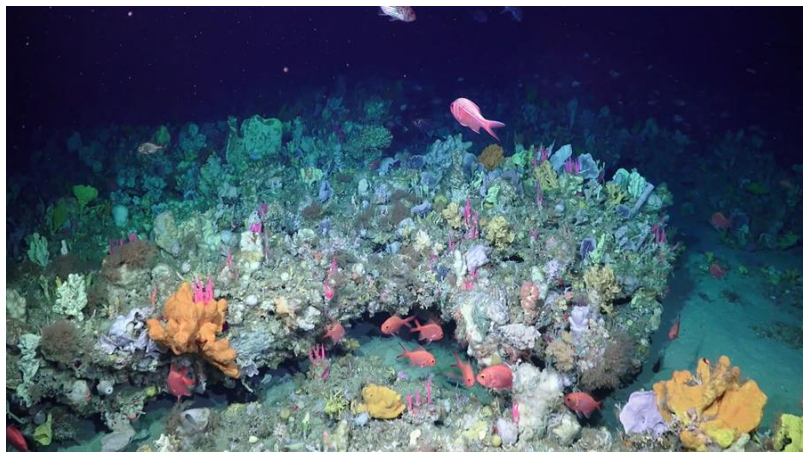
The WA Parks Foundation is delighted that Park Ambassador Mike Wood's outstanding achievements in bringing people closer to nature

have been recognised in the 2020 Queen's Birthday Honours.

Mike was appointed a Member (AM) of the Order of Australia for significant service to environmental conservation, and to recreation initiatives.

[Read more](#)

Expedition reveals deep sea coral gardens



Bremer Canyon sponge garden, credit: Schmidt Ocean Institute

Astonishing 'gardens' of deep-sea corals have been discovered by Australian and international scientists in the Bremer Canyon Marine Park in the Southern Ocean. Bremer Canyon Marine Park is approximately half-way between Albany and Esperance, offshore from Fitzgerald River National Park. It covers 4472 square kilometres, with depths from 15 metres to 5000 metres.

[Read more](#)

Our supporters



Make a difference

Uniting the community through a shared love for our WA Parks to protect and conserve them for our physical and mental health, and so they can be enjoyed into the future.

Become a member

Volunteer

Donate

Become a partner

Get in touch with us
info@ourwaparks.org.au



The WA Parks Foundation is a registered charity with the Australian Charities and Not-for-profit Commission. Any donations of \$2.00 or more are eligible for a tax deduction under the Income Tax Assessment Act 1997.



© 2019 WA Parks Foundation

WA Parks Foundation News

Share

Tweet

Share

Forward

[Preferences](#) | [Unsubscribe](#)