

Library

From: WA Parks Foundation <info=ourwaparks.org.au@cmail19.com> on behalf of WA Parks Foundation <info@ourwaparks.org.au>
Sent: Tuesday, 31 January 2023 10:33 AM
To: Library
Subject: Native Title, New Bee, New Ambassadors and more news

WA Parks Foundation | Connecting people to parks.



January 2023



Purnululu National Park has [Smartreka](#) interactive maps providing information on access, park facilities, trails, other features and attractions. Photo credit: Tourism Western Australia.

Native title over Purnululu National Park recognised

The Purnululu and Gajangana Jaru native title claimants have received recognition of native title as a result of an historic agreement with the Western Australian Government.

Purnululu National Park, which includes the Bungle Bungle Range and covers almost 240,000 hectares in Western Australia's East Kimberley region, had been the subject of two longstanding, overlapping native title claims.

In addition to the Purnululu National Park and Purnululu Conservation Reserve, the determination made by the Federal Court also recognises native title over neighbouring Crown land, including parts of the Texas Downs pastoral lease.

In congratulating the Purnululu and Gajangana Jaru native title groups on this long-awaited determination, Kimberley MLA Divina D'Anna said: "This historic recognition of the deep knowledge and connection to country of traditional owners and old people has been a long time in the making and is a proud moment for us all.

[Read more](#)

Meet Zephyr, the native bee!



Leioproctus zephyrus is restricted to native vegetation remnants in the southwest and is highly specialised, foraging only on a few species of *Jacksonia*. Photo credit: Curtin University.

Native bees are one of our most important pollinators and a new species has recently been scientifically described through Curtin University-led research.

Dr Kit Prendergast, from the Curtin School of Molecular and Life Sciences, has named the new species *Leioproctus zephyr* after her dog Zephyr after noticing that this little bee has a dog-like snout.

“Zephyr provided emotional support during my PhD,” Dr Prendergast explained.

“When I first examined the specimens I collected during my PhD surveys discovering the biodiversity of native bees in urbanised regions of WA’s southwest biodiversity hotspot, I was instantly intrigued by this bee’s very unusual face,” Dr Prendergast said.

[Read more](#)

Introducing our New Park Ambassadors



Associate Professor Chandra Salgado Kent's career in marine-related research spans more than two decades.

The WA Parks Foundation is delighted to welcome three new Park Ambassadors, bringing the total to 56.

Marine ecologist and bio-acoustician Chandra Salgado Kent is an Associate Professor at the Centre for Marine Ecosystems Research in the School of Science at Edith Cowan University.

Chandra is the Founder and Director of [Oceans Blueprint](#), a company that supports government, not-for profits and community on wildlife ecology, conservation, and management of threatened species and their habitats, with a focus on marine mammals. She is also co-chief investigator for the [Southwest Whale Ecology Study](#) (SouWest), a program run through a collaboration of registered organisations (Oceans Blueprint, Western Whale Research and Eco Gecko Environment and Design).

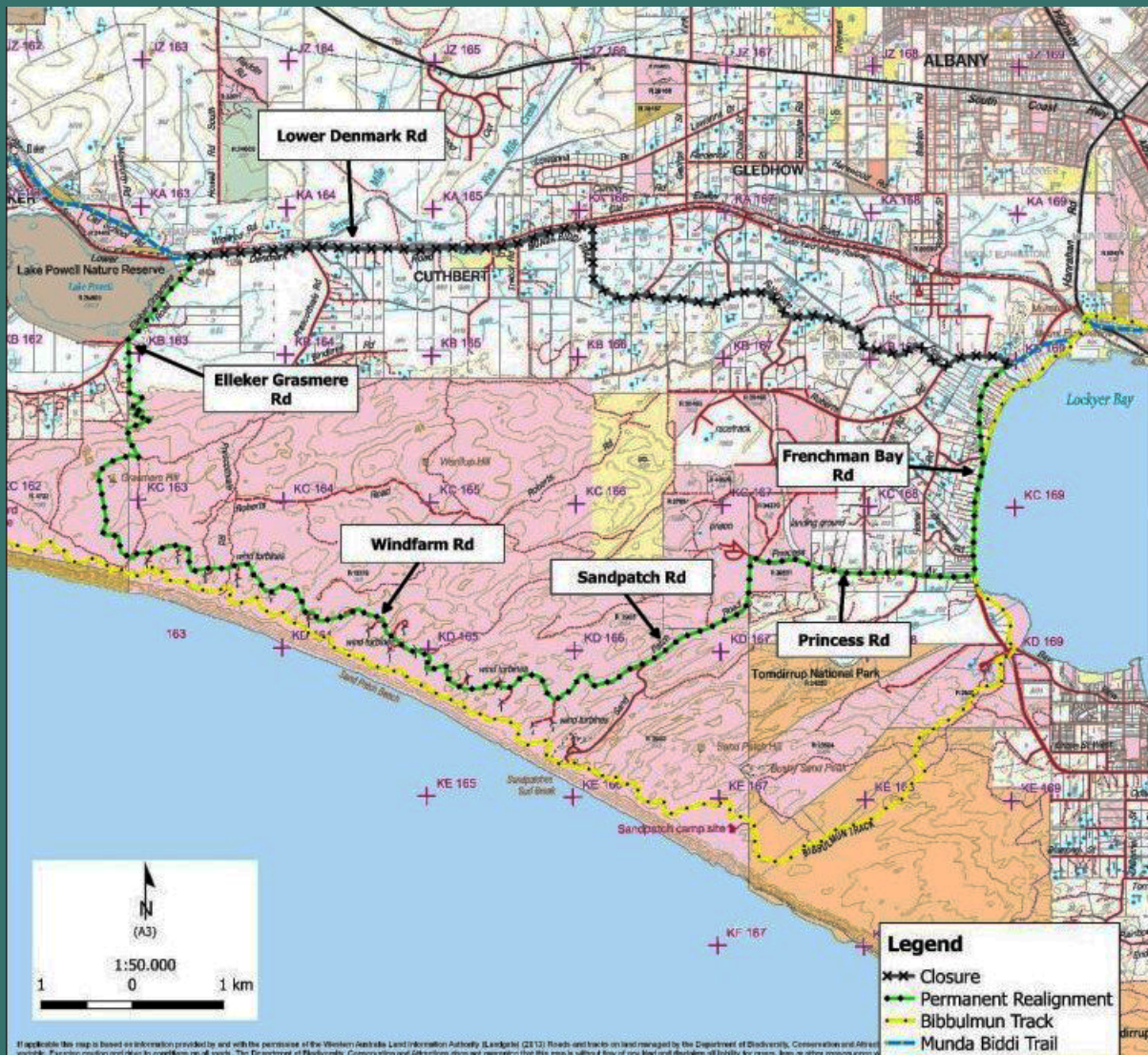
Also joining us as Park Ambassadors are The Lifestyle Pioneers, Simon and Elizabeth (Liz) Bailey, who traverse Australia in a caravan, sharing their adventures and giving travel advice online via their thriving [YouTube channel](#). The family plans to spend six months exploring Western Australia from September 2023.



The Lifestyle Pioneers, Liz and Simon Bailey have a thriving YouTube channel with over 12k subscribers.

[Read more](#)

Realigned southern Munda Biddi trail open



The permanent realignment takes Munda Biddi Trail users away from Denmark Road. Photo credit: Parks and Wildlife Service, Department of Biodiversity, Conservation and Attractions.

Epic south coastal views have been opened up for cyclists with the completion of a long-awaited Munda Biddi bike trail realignment.

The 21.1km realignment, traversing picturesque coastal heath and woodland, takes the trail off a section of the busy Lower Denmark Road and onto a purpose-built trail through the Albany Windfarm.

The realignment was not simple, according to the Parks and Wildlife Service of the Department of Biodiversity, Conservation and Attractions (DBCA).

The planning and design process required inspection and input by the Traditional Owners, consultation with residents, flora and fauna surveys, cooperation with the City of Albany, coordination with Synergy as the owner of the Albany Windfarm and liaison with the Water Corporation due to the proximity of drinking water bores.

[Read more](#)

Making the most of your Coral Coast adventures

AUSTRALIA'S CORAL COAST

HOLIDAY PLANNER 2023



AUSTRALIA'S
CORAL COAST
.COM

WESTERN
AUSTRALIA
WALKING ON A DREAM

The comprehensive holiday planning guide is an excellent resource for Coral Coast visitors.

An excellent holiday planning guide for WA's Coral Coast provides essential information, insider tips and plenty of inspiration for visitors.

From itineraries, maps, accommodation and tour recommendations to awesome travel images – the planner is well worth downloading.

Western Australia's Coral Coast includes two of our State's world heritage areas – Shark Bay and Ningaloo. Its 1,250 kms of breathtakingly beautiful coastline include vast stretches of white, sandy beaches, the world's largest

fringing reef, magnificent gorges, fascinating terrestrial and marine wildlife and carpets of wildflowers in winter and spring.

[Read more](#)

Well done, Deloitte volunteers!



Volunteers escape the office for Deloitte's Impact Day. Top photo - Koala Enclosure at Yanchep National Park. Bottom photo - Kanyana Wildlife Rehabilitation Centre.

[Kanyana Wildlife Rehabilitation Centre](#) and [Yanchep National Park](#) received some welcome help from Deloitte Australia volunteers at the most company's recent Impact Day.

Held annually, this is a special event on the Deloitte calendar, with more than 4000 staff volunteers downing their usual work tools in 2022 to help out in communities throughout Australia, Papua New Guinea and the Solomon Islands.

Impact Day, the company explains, aligns with its purpose of making an impact that matters in communities. It is also renowned for being a great team-building exercise.

Deloitte Australia is among the supporting partners of the WA Parks Foundation.

[Read more](#)

Our supporters



Make a difference

Uniting the community through a shared love for our WA Parks to protect and conserve them for our physical and mental health, and so they can be enjoyed into the future.

Become a member

Donate

Volunteer

Become a partner

Get in touch with us
info@ourwaparks.org.au



The WA Parks Foundation is a registered charity with the Australian Charities and Not-for-profit Commission. Any donations of \$2.00 or more are eligible for a tax deduction under the Income Tax Assessment Act 1997.



Share

Tweet

Share

Forward

© 2021 WA Parks Foundation

WA Parks Foundation News

[Preferences](#) | [Unsubscribe](#)

