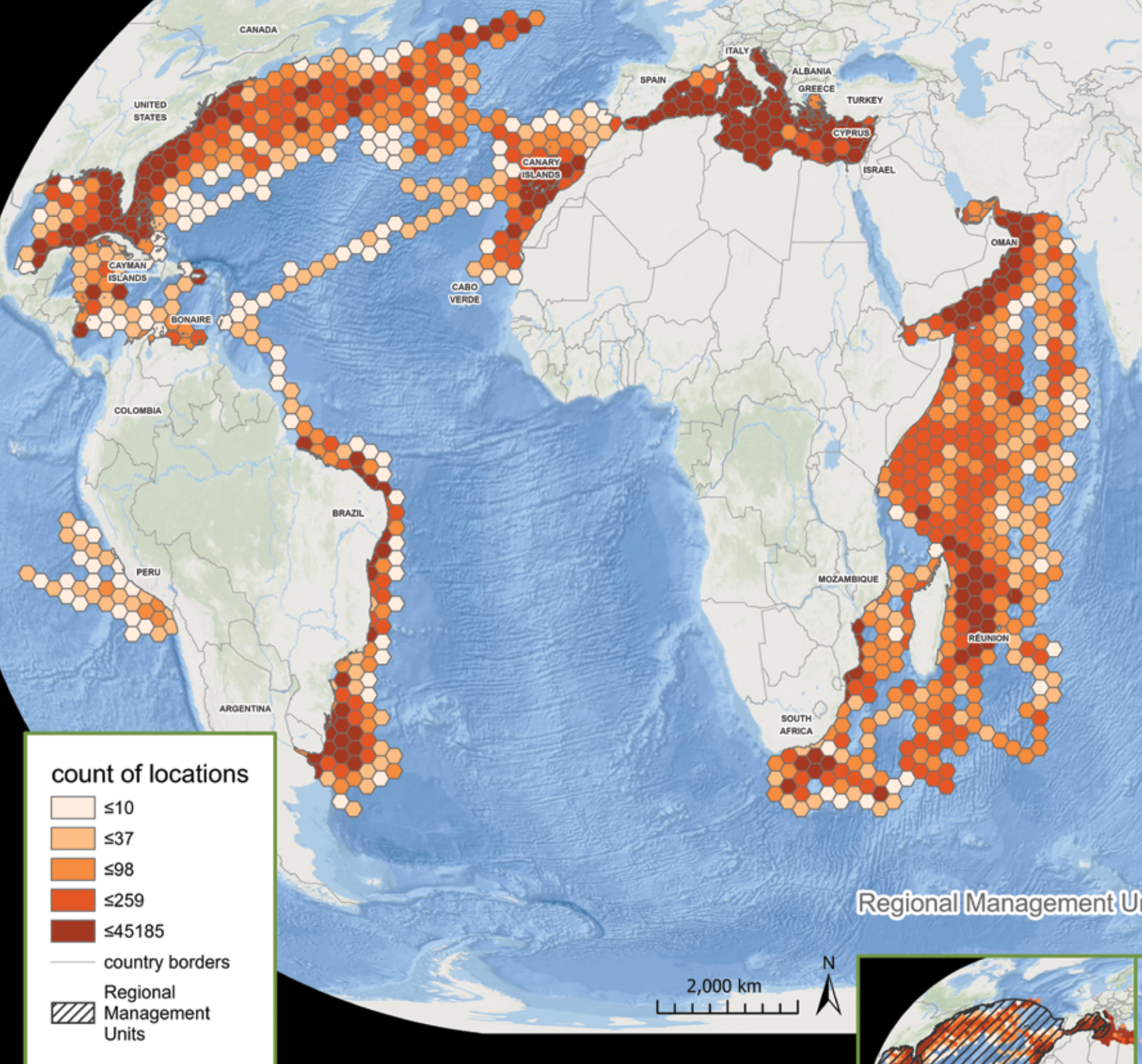
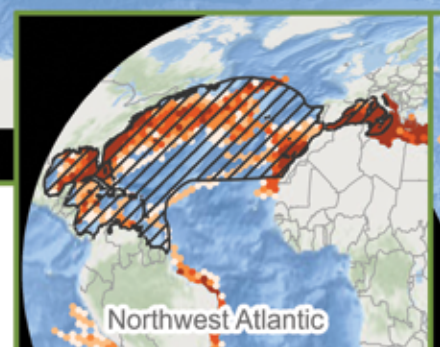


Global Loggerhead Turtle

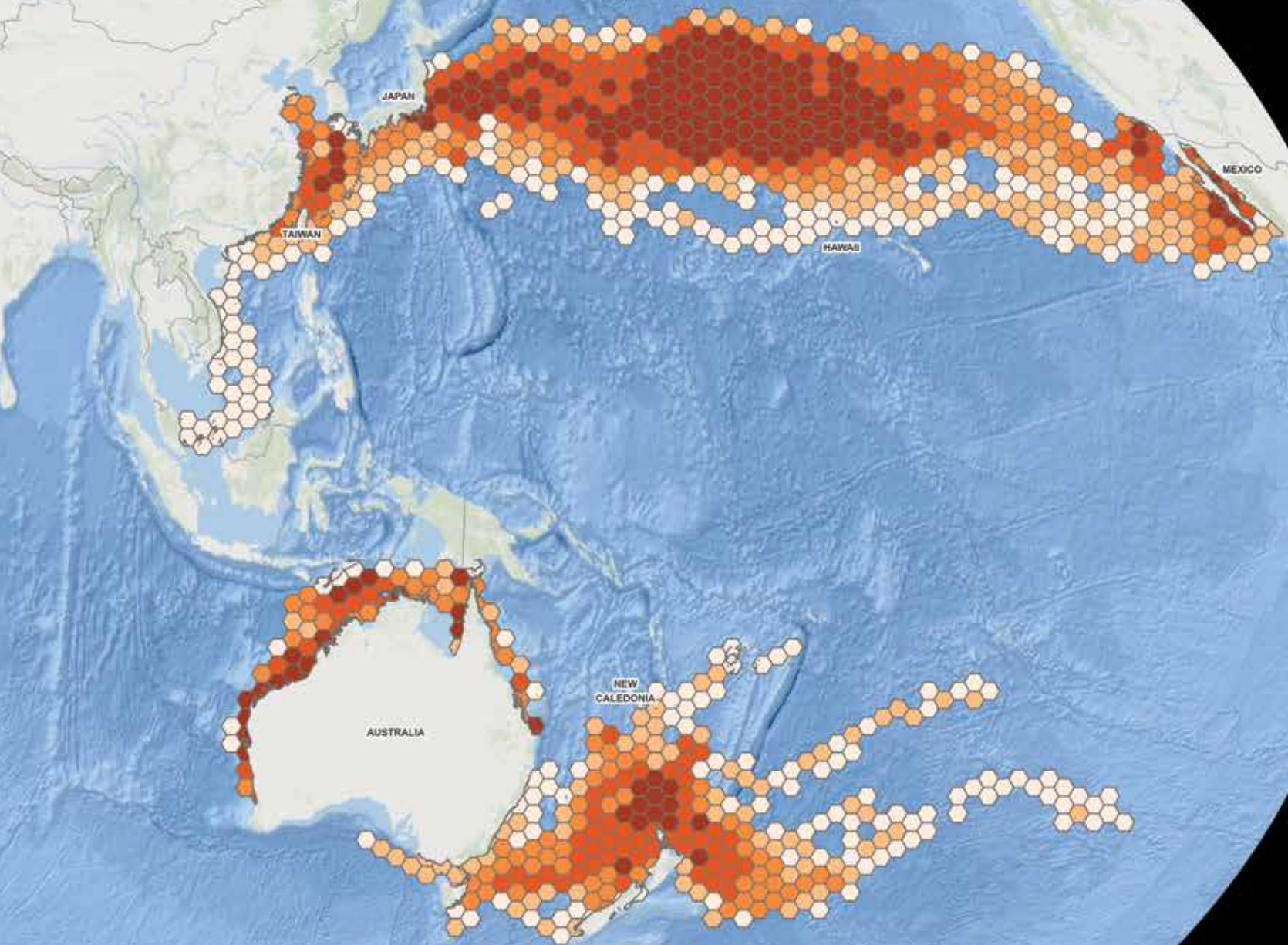


notes: This map displays aggregated data from 1,273 individual loggerhead turtles and a total of 650,000 locations, sourced from more than 80 different projects. For details, see the data citations beginning on p. 49. Data are displayed as given by the providers and with minimal processing to remove locations on land and visual outliers. Some tracks are raw locations while others have been more extensively filtered or modeled. On the main map, polygons are colored according to the number of loggerhead locations they contain; color bins were determined by splitting the count data into quintiles. Darker colors represent a higher number of locations, which can indicate a high number of tracked turtles in that location or that turtles spent a lot of time there. Countries of origin are labeled in the map. The insets show the 10 loggerhead regional management units (or subpopulations) that were defined in 2010 by Wallace et al. by combining telemetry, genetics, tagging, and nesting data. This map is not intended to be a comprehensive representation of all extant telemetry data or an authoritative source for the studies cited. **scale:** 1:73,000,000 **projection:** Eckert IV (central meridian—80W) **data:** The SWOT team and reviewed literature; Esri, DeLorme, GEBCO, NOAA NGDC, and other contributors. **produced in partnership with:** Oceanic Society, Duke University, OBIS-SEAMAP, and the IUCN-MTSG

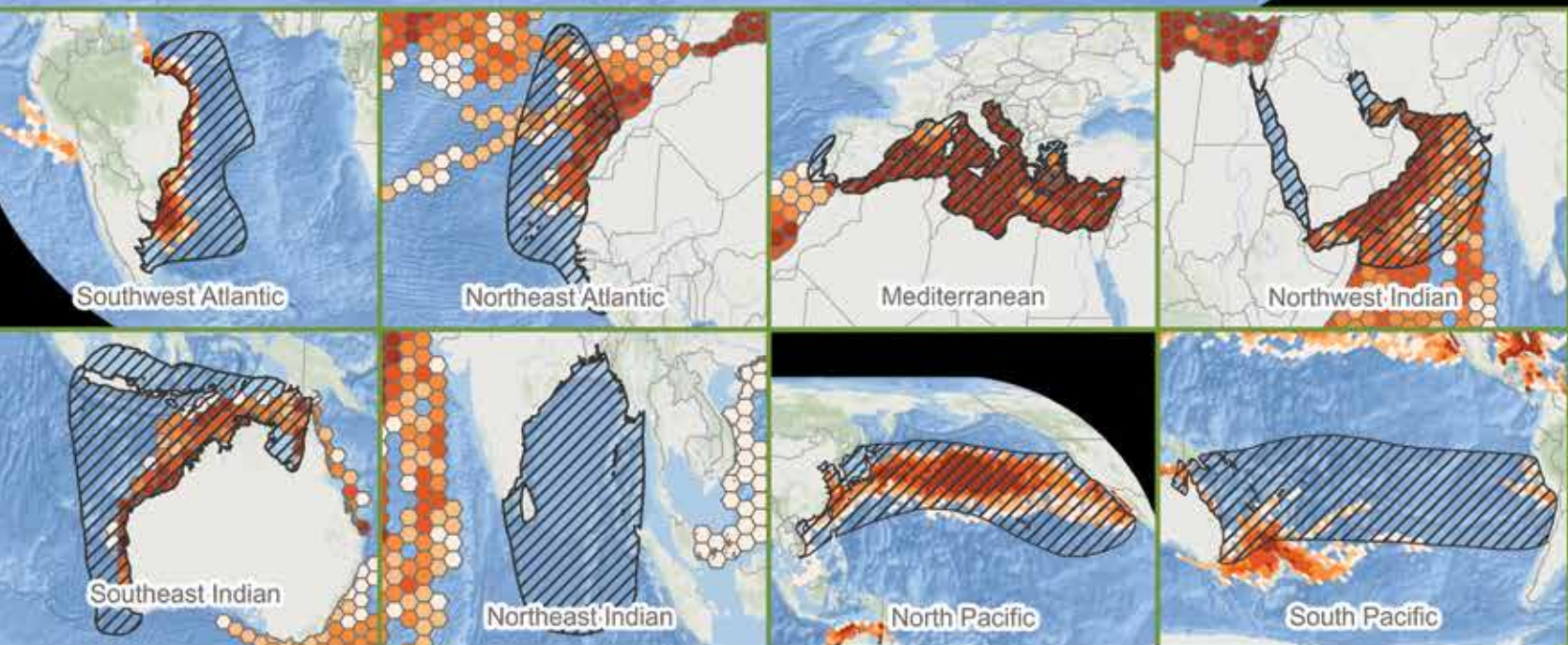
Regional Management Units



Turtle Satellite Telemetry



nits



delfin mular (*Tursiops truncatus*) y la tortuga común (*Caretta caretta*) en Canarias. Personal communication. In *SWOT Report—State of the World's Sea Turtles*, vol. XII (2017).
SWOT Contact: Nuria Varo Cruz

Data Record 15 | SWOT ID: 347

Project Title: Islas Canarias (Proyecto Aegina): Juvenile Loggerheads
Project Partners: Instituto Canario de Ciencias Marinas, Gobierno de Canarias; Instituto Nacional de Desenvolvimento das Pescas; and Direção Geral do Ambiente, Ministerio de Ambiente, Agricultura e Pescas
Metadata: 11 juvenile *Caretta caretta*; tags deployed in 2006
Data Sources: (1) Cruz, N. 2018. Islas Canarias (Proyecto Aegina): Juvenile loggerheads. Data downloaded from OBIS-SEAMAP (<http://seamap.env.duke.edu/dataset/347>) on December 4, 2018. (2) STAT. (3) OBIS-SEAMAP.
SWOT Contact: Nuria Varo Cruz

Data Record 16 | SWOT ID: 1444

Project Title: Canary Islands
Project Partner: LIFE *Caretta caretta*
Metadata: 9 juvenile *Caretta caretta*; tags deployed in Canary Islands
Data Sources: (1) Cruz, N. 2016. Canary Islands. Data downloaded from OBIS-SEAMAP (<http://seamap.env.duke.edu/dataset/1444>) on February 12, 2017, originated from STAT (http://www.seaturtle.org/tracking/index.shtml?project_id=886). (2) STAT. (3) SWOT Online Database.
SWOT Contact: Nuria Varo Cruz

Data Record 17 | SWOT ID: 1801

Project Title: Juvenile Loggerheads: Canary Islands Reintroduction Program—ADS Biodiversidad
Project Partners: Asociación para el Desarrollo Sostenible y Conservación de la Biodiversidad (ADS Biodiversidad) and Centre of Cabildo de Fuerteventura (Morro Jable)
Metadata: 5 juvenile *Caretta caretta*; individuals are 7–8 years old and have been reared in captivity; tags deployed at Cofete Beach
Data Sources: (1) Cruz, N. 2018. Juvenile loggerheads: Canary Islands reintroduction program. Data downloaded from OBIS-SEAMAP (<http://seamap.env.duke.edu/dataset/1801>) on December 4, 2018. (2) STAT. (3) OBIS-SEAMAP.
SWOT Contact: Nuria Varo Cruz

CAYMAN ISLANDS

Data Record 18 | SWOT ID: 349

Project Title: Cayman Islands 2003: Loggerhead and Green Turtles
Project Partner: Marine Turtle Research Group, Cayman Islands Department of Environment
Metadata: 1 adult *Caretta caretta*; tag deployed July 2003
Data Sources: (1) Blumenthal, J. 2018. Cayman Islands 2003: Loggerhead and Green Turtles. Data downloaded from OBIS-SEAMAP (<http://seamap.env.duke.edu/dataset/349>) on December 4, 2018. (2) STAT. (3) OBIS-SEAMAP.
SWOT Contact: Janice Blumenthal

Data Record 19 | SWOT ID: 350

Project Title: Cayman Islands 2004: Loggerhead and Green Turtles
Project Partner: Marine Turtle Research Group, Cayman Islands Department of Environment
Metadata: 2 adult *Caretta caretta*; tags deployed in 2005 and 2006
Data Sources: (1) Blumenthal, J. 2018. Cayman Islands 2004: Loggerhead and Green Turtles. Data downloaded from OBIS-SEAMAP (<http://seamap.env.duke.edu/dataset/350>) on December 4, 2018. (2) STAT. (3) OBIS-SEAMAP.
SWOT Contact: Janice Blumenthal

COLOMBIA

Data Record 20 | SWOT ID: 1292

Project Title: Caribbean Colombian Sea Turtle Satellite Tracking
Project Partners: Sea Turtles and Mammal Conservation Program, UTADEO—Colombian Caribbean, Universidad Jorge Tadeo Lozano (UTADEO), and Mundo Marino Aquarium, Museo del Mar Foundation
Metadata: 1 neonate, 1 juvenile, and 1 adult *Caretta caretta*; tags deployed in 2016, 2017, and 2018, respectively
Data Sources: (1) Sea Turtles and Mammal Conservation Program (ProCTMM), 2018. Caribbean Colombian Sea Turtle Satellite Tracking. Data downloaded from OBIS-SEAMAP (<http://seamap.env.duke.edu/dataset/1292>) on December 4, 2018. (2) STAT. (3) OBIS-SEAMAP.
SWOT Contact: ProCTMM

SPAIN

Data Record 21 | SWOT ID: 1146

Project Title: Spain Tags Merged
Project Partners: Fisheries Bycatch Research

Group, NOAA, and Kai Submon, University of North Carolina, Wilmington
Metadata: 1 adult, 5 juvenile, and 20 subadult *Caretta caretta*; tags deployed between 2008 and 2012
Data Sources: (1) Swimmer, Y. 2017. Spain tags merged. Data downloaded from OBIS-SEAMAP (<http://seamap.env.duke.edu/dataset/1146>) on December 4, 2018. (2) STAT. (3) OBIS-SEAMAP.
SWOT Contact: Yonat Swimmer

Data Record 22 | SWOT ID: 1401

Project Title: Conservación y Preservación de Tortugas Marinas
Project Partners: Fundación para la Conservación y Recuperación de Animales Marinos and Universitat Politècnica de València
Metadata: 3 juvenile and 3 adult *Caretta caretta*; tags deployed in Tarragona, Spain, in 2016; dataset includes an adult male loggerhead that traveled across the Atlantic to waters east of Florida, United States
Data Sources: (1) Fundación para la Conservación y Recuperación de Animales Marinos. 2019. Conservación y preservación de tortugas marinas. Data downloaded from OBIS-SEAMAP (<http://seamap.env.duke.edu/dataset/1401>) on December 4, 2018. (2) STAT. (3) OBIS-SEAMAP.

UNITED STATES

Data Record 23

Project Title: Cape Canaveral Male Loggerheads
Metadata: 32 male *Caretta caretta*
Data Sources: (1) Arendt, M. D., A. L. Segars, J. I. Byrd, J. Boynton, J. D. Whitaker, L. Parker, D. W. Owens, G. Blainvillain, J. M. Quattro, and M. A. Roberts. 2012. Distributional patterns of adult male loggerhead (*Caretta caretta*) sea turtles in the vicinity of Cape Canaveral, Florida, USA, during and after a major annual breeding aggregation. *Marine Biology* 159 (1): 101–112. (2) Arendt, M. D., A. L. Segars, J. I. Byrd, J. Boynton, J. Schwenter, J. D. Whitaker, and L. Parker. 2012. Migration, distribution, and dive behavior of adult male loggerhead sea turtles (*Caretta caretta*) following dispersal from a major breeding aggregation in the North Western Atlantic. *Marine Biology* 159 (1):113–125.
SWOT Contact: Mike Arendt

Data Record 24

Metadata: 3 *Caretta caretta*
Data Source: Godfrey, M. 2018. Rehabilitated sea turtles from Topsail Island, North Carolina. Personal communication. In *SWOT Report—State of the World's Sea Turtles*, vol. XIV (2019).
SWOT Contacts: Matthew Godfrey and Karen Beasley

Data Record 25 | SWOT ID: 996

Project Title: North Carolina Rehabilitated Sea Turtle Monitoring Project
Project Partners: Karen Beasley, Sea Turtle Rescue and Rehabilitation Center, and North Carolina State University
Metadata: 2 subadult *Caretta caretta*; tags deployed in 2009 and 2013 on rehabilitated individuals
Data Sources: (1) Coyne, M. 2017. North Carolina Rehabilitated Sea Turtle Monitoring Project. Data downloaded from OBIS-SEAMAP (<http://seamap.env.duke.edu/dataset/996>) on December 4, 2018. (2) STAT. (3) OBIS-SEAMAP.
SWOT Contact: Michael Coyne

Data Record 26

Metadata: 17 juvenile *Caretta caretta*; tags deployed at sea
Data Source: Mansfield, K. L., J. Wyneken, W. Porter, and J. Luo. 2014. First satellite tracks of neonate sea turtles redefine the “lost years” oceanic niche. *Proceedings of the Royal Society B* 281 (1781): 20133039.
SWOT Contact: Kate Mansfield

Data Record 27

Project Partners: College of William and Mary and Virginia Institute of Marine Science
Metadata: 21 juvenile and 10 adult *Caretta caretta*
Data Sources: (1) Mansfield, K. L., V. S. Saba, J. Keinath, and J. A. Musick. 2009. Satellite telemetry reveals a dichotomy in migration strategies among juvenile loggerhead sea turtles in the northwest Atlantic. *Marine Biology* 156: 2555–2570. (2) Mansfield, K. L. 2006. Sources of mortality, movements, and behavior of sea turtles in Virginia. Dissertation. College of William and Mary, Marine Science School, Virginia Institute of Marine Science, Gloucester Point, VA.
SWOT Contact: Kate Mansfield

Data Record 28

Metadata: 127 *Caretta caretta*; tags deployed on nesting females in Florida
Data Source: Tucker, T., and K. Mazzarella. 2018. Personal communication. In *SWOT Report—State of the World's Sea Turtles*, vol. XIV (2019).
SWOT Contact: Tony Tucker

Data Record 29 | SWOT ID: 410

Project Title: Virginia Aquarium Stranding Response Program
Project Partners: Virginia Aquarium Stranding Response Program, Virginia Aquarium and Marine Science Center, and Seaturtle.org
Metadata: 17 juvenile, 3 subadult, and 1 adult *Caretta caretta*; tags deployed between 2007 and 2016 on stranded turtles
Data Sources: (1) Lockhart, G. 2018. Virginia Aquarium Stranding Response Program. Data downloaded from OBIS-SEAMAP (<http://seamap.env.duke.edu/dataset/410>) on December 4, 2018. (2) STAT. (3) OBIS-SEAMAP.
SWOT Contacts: Gwen Lockhart and Susan Barco

Data Record 30 | SWOT ID: 978

Project Title: Virginia Aquarium Sea Turtle Research
Project Partner: Virginia Aquarium and Marine Science Center Foundation
Metadata: 1 adult, 7 subadult, and 2 unknown-life-stage *Caretta caretta*; tags deployed on wild-caught or bycaught individuals in 2013 and 2015
Data Sources: (1) Barco, S. 2018. Virginia Aquarium Sea Turtle Research. Data downloaded from OBIS-SEAMAP (<http://seamap.env.duke.edu/dataset/978>) on December 4, 2018. (2) STAT. (3) OBIS-SEAMAP.
SWOT Contact: Susan Barco

Data Record 31 | SWOT ID: 1018

Project Title: Virginia Aquarium and U.S. Navy Sea Turtle Research Project
Project Partners: Virginia Aquarium Research and Conservation Department, and U.S. Fleet Forces Command, Naval Facilities Engineering Command (NAVFAC) Atlantic
Metadata: 1 adult, 4 juvenile, and 11 unknown-life-stage *Caretta caretta*; tags deployed between 2013 and 2015
Data Sources: (1) Lockhart, G. 2018. Virginia Aquarium and U.S. Navy Sea Turtle Research Project. Data downloaded from OBIS-SEAMAP (<http://seamap.env.duke.edu/dataset/1018>) on December 4, 2018. (2) STAT. (3) OBIS-SEAMAP.
SWOT Contact: Gwen Lockhart

Data Record 32 | SWOT ID: 655

Project Title: North Carolina Long-Term Sea Turtle Monitoring Project
Project Partners: Seaturtle.org, the North Carolina Wildlife Resources Commission, and Duke University Marine Laboratory
Metadata: 8 adult *Caretta caretta*; tags deployed in 2010, 2012, and 2013
Data Sources: (1) Coyne, M. 2017. North Carolina Long-Term Sea Turtle Monitoring Project. Data downloaded from OBIS-SEAMAP (<http://seamap.env.duke.edu/dataset/655>) on December 4, 2018. (2) STAT. (3) OBIS-SEAMAP.
SWOT Contact: Michael Coyne

Data Record 33 | SWOT ID: 1342

Project Title: Florida Loggerhead Migrations
Project Partner: National Marine Fisheries Service Office of Protected Resources
Metadata: 38 adult *Caretta caretta*; tags deployed between 1998 and 2000
Data Sources: (1) Schroeder, B. 2018. Florida Loggerhead Migrations. Data downloaded from OBIS-SEAMAP (<http://seamap.env.duke.edu/dataset/1342>) on December 4, 2018. (2) STAT. (3) OBIS-SEAMAP.
SWOT Contact: Barbara Schroeder

Data Record 34 | SWOT ID: 1490

Project Title: Juvenile Loggerhead Use of the Gulf Stream off Cape Hatteras, North Carolina
Project Partners: North Carolina Renewable Ocean Energy Program, Protected Resources Branch of the National Oceanic and Atmospheric Administration Beaufort Laboratory, University of North Carolina Coastal Studies Institute, North Carolina Aquariums at Pine Knoll Shores and Roanoke Island, and University of Central Florida
Metadata: 3 juvenile *Caretta caretta*; headstarted turtles originally collected from North Carolina nests; tagged turtles released in Sargassum mats in the gulf stream off the coast of North Carolina in May 2017
Data Sources: (1) Dubbs, L. 2017. Juvenile loggerhead use of the Gulf Stream off Cape Hatteras, North Carolina. Data downloaded from OBIS-SEAMAP (<http://seamap.env.duke.edu/dataset/1490>) on December 4, 2018. (2) STAT. (3) OBIS-SEAMAP.
SWOT Contact: Lindsey Dubbs

Data Record 35

Project Title: Mote Marine Lab Males
Metadata: 7 adult male *Caretta caretta*
Data Sources: (1) Mazzarella, K., R. Hardy, and D. Evans. 2019. Satellite tagged sea turtle movements associated with red tide. Poster presentation at the Annual Symposium on Sea Turtle Conservation and Biology, February 2019. (2) Mazzarella, K. 2019. Unpublished data from

the Mote Marine Lab. http://www.seaturtle.org/tracking/index.shtml?project_id=1325.
SWOT Contact: Kristen Mazzarella

Data Record 36

Project Title: Archie Carr Interesting Loggerheads
Metadata: 14 adult female *Caretta caretta*
Data Sources: (1) Ceriani, S. 2019. Tracking interesting loggerhead turtles. Personal communication. In *SWOT Report—State of the World's Sea Turtles*, vol. XV (2020). (2) Evans, D. R., R. R. Carthy, and S. A. Ceriani. 2019. Migration routes, foraging behavior, and site fidelity of loggerhead sea turtles (*Caretta caretta*) satellite tracked from a globally important rookery. *Marine Biology* 166: 134.
SWOT Contact: Simona Ceriani

Data Record 37

Project Title: Loggerhead Marinelifelife Center Tracking
Metadata: 7 adult, 3 juvenile, and 6 subadult *Caretta caretta*
Data Sources: (1) Manire, C. 2019. Loggerheads rehabilitated at Loggerhead Marinelifelife Center. Data downloaded from OBIS-SEAMAP (<http://seamap.env.duke.edu/dataset/658>). (2) OBIS-SEAMAP.
SWOT Contacts: Sarah Hirsch and Charles Manire

INDIAN OCEAN

AUSTRALIA

Data Record 38

Project Title: Western Australia Loggerheads
Metadata: 31 *Caretta caretta*
Data Sources: (1) Waayers D., T. Tucker, S. Whiting, R. Groom, M. Vanderklift, R. Pillans, J. Rossendell, K. Pendoley, X. Hoerner, M. Thums, K. Dethmers, C. J. Limpus, A. Wirsig, C. McMahon, A. Strydom, P. Whittock, K. Howlett, D. Oades, G. McFarlane, T. Duke, M. Guinea, A. Whiting, M. Speirs, J. King, K. Hattingh, M. Heithaus, R. Mau, and D. Holley. 2019. Satellite tracking of marine turtles in south-eastern Indian Ocean: A gap analysis of deployments spanning 1990–2016. *Indian Ocean Turtle Newsletter* 29: 23–37. (2) Mau, R., B. Halkyard, C. Smallwood, and J. Downs. 2013. Critical habitats and migratory routes of tagged loggerhead turtles (*Caretta caretta*) after nesting at Ningaloo Reef, Western Australia. In *Proceedings of the First Western Australian Marine Turtle Symposium* 1: 14. (3) Tucker, T., S. Fossette, S. Whiting, D. Rob, and P. Barnes. 2019. *Spatial and Temporal Use of Inter-nesting Habitat by Sea Turtles along the Muiron Islands and Ningaloo Coast*. Woodside Energy Report.
SWOT Contact: Tony Tucker

MOZAMBIQUE

Data Record 39 | SWOT ID: 1118

Project Title: AICM Satellite-Tracked Loggerhead Sea Turtles from Mozambique, 2012, under the Southwest Indian Ocean Fisheries Project (SWIOFP)
Project Partners: Associação para Investigação Costeira e Marinha, Ifremer, and Kélonia
Metadata: 3 adult female *Caretta caretta*; tags deployed in Mozambique
Data Sources: (1) Pereira, M. A. M., E. J. S. Videira, P. M. B. Gonçalves, and R. S. Fernandes. 2014. Post-nesting migration of loggerhead turtles (*Caretta caretta*) from Southern Mozambique. *African Sea Turtle Newsletter* 1: 48–51. (2) Videira, E., M. Dalleau, J. Bourjea, and M. Pereira. 2015. AICM satellite-tracked loggerhead sea turtles from Mozambique, 2012, under SWIOFP. Data downloaded from OBIS-SEAMAP (<http://seamap.env.duke.edu/dataset/1118>) on February 12, 2017. (3) SWOT Online Database.
SWOT Contacts: Eduardo Videira, Mayeul Dalleau, Jérôme Bourjea, and Marcos Pereira

OMAN

Data Record 40

Project Title: Masirah Island Nesting Females
Metadata: 10 female nesting *Caretta caretta*
Data Sources: (1) Rees, A. F., S. Al Saady, A. C. Broderick, M. S. Coyne, N. Papatathanasopoulou, and B. J. Godley. 2010. Behavioral polymorphism in one of the world's largest populations of loggerhead sea turtles, *Caretta caretta*. *Marine Ecology Progress Series* 418: 201–212. (2) Rees, A. F., A. Al-Kiyumi, A. C. Broderick, N. Papatathanasopoulou, and B. J. Godley. 2012. Each to their own: Interspecific differences in migration of Masirah Island turtles. *Chelonian Conservation Biology* 11 (2): 243–248.
SWOT Contact: Alan Rees

Tracking and Analysis Tool (STAT; http://www.seaturtle.org/tracking/index.shtml?project_id=678). (3) STAT. (4) OBIS-SEAMAP.
SWOT Contacts: Andy Coleman and Eric Pultz

Data Record 29 | SWOT ID: 1142
Project Title: Northeast Florida Green Turtle Tracking Project
Project Partners: Guana Tolomato Matanzas National Estuarine Research Reserve, Friends of the GTM Reserve, Keepers of the Coast, and Eastman Environmental.
Metadata: 3 juvenile *Chelonia mydas*
Data Sources: (1) Eastman S. 2017. Northeast Florida Green Turtle Tracking Project. Data downloaded from OBIS-SEAMAP (<http://seamap.env.duke.edu/dataset/1142>) and originated from Satellite Tracking and Analysis Tool (STAT; http://www.seaturtle.org/tracking/index.shtml?project_id=620). (2) OBIS-SEAMAP.
SWOT Contact: Erin Seney

Data Record 30
Project Title: Cape Canaveral Sea Turtle Tagging
Metadata: 32 male *Caretta caretta*; 3 *Lepidochelys kempii*
Data Sources: (1) Arendt, M. D., A. L. Segars, J. I. Byrd, J. Boynton, J. D. Whitaker, L. Parker, D. W. Owens, G. Blainvillain, J. M. Quattro, and

M. A. Roberts. 2012a. Distributional patterns of adult male loggerhead (*Caretta caretta*) sea turtles in the vicinity of Cape Canaveral, Florida, USA, during and after a major annual breeding aggregation. *Marine Biology* 159 (1): 101–112. (2) Arendt, M. D., A. L. Segars, J. I. Byrd, J. Boynton, J. Schwenter, J. D. Whitaker, and L. Parker. 2012b. Migration, distribution, and dive behavior of adult male loggerhead sea turtles (*Caretta caretta*) following dispersal from a major breeding aggregation in the North Western Atlantic. *Marine Biology* 159 (1): 113–125.
SWOT Contact: Mike Arendt

Data Record 31
Project Title: Archie Carr Green Turtles
Metadata: 19 male and 8 female adult *Chelonia mydas*
Data Sources: Bagley, D. 2019. Tracking of male and female green turtles. Personal communication. In *SWOT Report—State of the World’s Sea Turtles*, vol. XV (2020).
SWOT Contact: Dean Bagley

Data Record 32
Project Title: Archie Carr Interesting Loggerheads
Metadata: 14 adult female *Caretta caretta*
Data Sources: (1) Ceriani, S. 2019. Tracking

interesting loggerhead turtles. Personal communication. In *SWOT Report—State of the World’s Sea Turtles*, vol. XV (2020). (2) Evans, D. R., R. R. Carthy, and S. A. Ceriani. 2019. Migration routes, foraging behavior, and site fidelity of loggerhead sea turtles (*Caretta caretta*) satellite tracked from a globally important rookery. *Marine Biology* 166: 134.
SWOT Contact: Simona Ceriani

Data Record 33 | SWOT ID: 658
Project Title: Loggerhead Marinelifelife Center Tracking
Metadata: 7 adult, 3 juvenile, and 6 subadult *Caretta caretta*
Data Sources: (1) Manire, C. 2019. Loggerheads rehabilitated at Loggerhead Marinelifelife Center. Data downloaded from OBIS-SEAMAP (<http://seamap.env.duke.edu/dataset/658>). (2) OBIS-SEAMAP.
SWOT Contacts: Sarah Hirsch and Charles Manire

Data Record 34
Project Title: Gulf of Mexico Kemp’s and Green Turtles
Metadata: 9 *Lepidochelys kempii*; 15 *Chelonia mydas*
Data Source: Metz, T. 2019. Tracking Kemp’s and green turtles in the Gulf of Mexico. Personal

communication. In *SWOT Report—State of the World’s Sea Turtles*, vol. XV (2020).
SWOT Contact: Tasha Metz

Data Record 35
Project Title: Mote Additional Loggerheads
Metadata: 7 adult male *Caretta caretta*
Data Sources: (1) Mazzarella, K., R. Hardy, and D. Evans. Satellite tagged sea turtle movements associated with red tide. Poster presentation at the Annual Symposium on Sea Turtle Conservation and Biology, February 2019. (2) Mazzarella, K. Unpublished data from the Mote Marine Lab. http://www.seaturtle.org/tracking/index.shtml?project_id=1325. (3) STAT.
SWOT Contact: Kristen Mazzarella

Data Record 36
Project Title: Green Turtles from Southwest Florida
Metadata: 10 adult female *Chelonia mydas*
Data Source: Sloan, K. 2020. Tracking green turtles from southwest Florida. Personal communication. In *SWOT Report—State of the World’s Sea Turtles*, vol. XV (2020).
SWOT Contact: Kelly Sloan

GLOBAL LOGGERHEAD SATELLITE TELEMETRY

The following data records refer to satellite telemetry datasets from tags that were deployed on loggerhead turtles worldwide and were combined to create the map on pp. 32–33. The data are organized first by ocean basin and then by country of deployment. For information regarding data processing and filtering, see the note on the map on p. 32. These data were generously contributed to SWOT by the people and partners listed subsequently. Records that have a SWOT ID can be viewed in detail in the SWOT online database and mapping application at <http://seamap.env.duke.edu/swot>, which contains additional information about the projects and their methodologies.

To save space, we have used the following abbreviations in the data source fields: (1) “STAT” refers to Coyne, M. S., and B. J. Godley. 2005. Satellite Tracking and Analysis Tool (STAT): An integrated system for archiving, analyzing, and mapping animal tracking data. *Marine Ecology Progress Series* 301: 1–7. (2) “SWOT Online Database” refers to Kot, C. Y., E. Fujioka, A. DiMatteo, B. P. Wallace, B. J. Hutchinson, J. Cleary, P. N. Halpin, and R. B. Mast. 2015. The State of the World’s Sea Turtles Online Database. Data provided by the SWOT Team and hosted on OBIS-SEAMAP. Oceanic Society, IUCN Marine Turtle Specialist Group, and Marine Geospatial Ecology Lab, Duke University. <http://seamap.env.duke.edu/swot>. (3) “OBIS-SEAMAP” refers to Halpin, P. N., A. J. Read, E. Fujioka, B. D. Best, B. Donnelly, L. J. Hazen, C. Kot, K. Urian, E. LaBrecque, A. DiMatteo, J. Cleary, C. Good, L. B. Crowder, and K. D. Hyrenbach. 2009. OBIS-SEAMAP: The world data center for marine mammal, sea bird, and sea turtle distributions. *Oceanography* 22 (2): 104–115. When listed, these sources indicate that the dataset was contributed online through STAT, SWOT, or OBIS-SEAMAP.

ATLANTIC OCEAN

ARGENTINA

Data Record 1
Metadata: 6 *Caretta caretta*; tags deployed in Argentina
Data Source: González Carman, V., I. Bruno, S. Maxwell, K. Álvarez, D. Albareda, E. M. Acha, and C. Campagna. 2016. Habitat use, site fidelity, and conservation opportunities for juvenile loggerhead sea turtles in the Río de la Plata, Argentina. *Marine Biology* 163: 1–13.
SWOT Contact: Victoria González Carman

BONAIRE

Data Record 2
Metadata: 5 female *Caretta caretta*; tags deployed on nesting turtles
Data Sources: (1) Nava, M. I., and Sea Turtle Conservation Bonaire. 2019. Tracking marine turtles off of Bonaire. Personal communication. In *SWOT Report—State of the World’s Sea Turtles*, vol. XIV (2019). (2) Becking, L. E., M. J. A. Christianen, M. I. Nava, N. Miller, S. Willis, and R. P. van Dam. 2016. Post-breeding migration routes of marine turtles from Bonaire and Klein Bonaire, Caribbean Netherlands. *Endangered Species Research* 30: 117–124.
SWOT Contact: Mabel Nava

BRAZIL

Data Record 3
Metadata: 19 juvenile *Caretta caretta*; tags deployed at sea
Data Source: Mansfield, K. L., M. L. Mendilaharsu, N. F. Putman, M. A. G. dei Marcovaldi, A. E. Sacco, G. Lopez, T. Pires, and Y. Swimmer. 2017. First satellite tracks of South Atlantic sea turtle “lost years”: Trans-equatorial and seasonal implications for population connectivity. *Proceedings of the Royal Society B* 284: 20171730.
SWOT Contact: Kate Mansfield

Data Record 4
Metadata: 10 nesting *Caretta caretta*
Data Source: Marcovaldi, M. Á., G. G. Lopez,

L. S. Soares, E. S. H. M. Lima, J. C. A. Thomé, and A. P. Almeida. 2010. Satellite-tracking of female loggerhead turtles highlights fidelity behavior in northeastern Brazil. *Endangered Species Research* 12: 263–272.
SWOT Contact: Neca Marcovaldi

Data Record 5
Metadata: 13 *Caretta caretta*; tags deployed in Brazil
Data Source: Marcovaldi, M. Á. 2018. Personal communication. In *SWOT Report—State of the World’s Sea Turtles*, vol. XIV (2019).
SWOT Contact: Neca Marcovaldi

Data Record 6 | SWOT ID: 951
Project Title: Brazil Trawl-Caught Turtles
Project Partners: Fisheries Bycatch Research Group; Danielle Monteiro, Universidade Federal do Rio Grande (FURG); and Projeto TAMAR
Metadata: 3 adult and 5 juvenile *Caretta caretta* tagged after being caught in trawl fisheries and released on the continental shelf of southern Brazil in 2013 and 2014
Data Sources: (1) Monteiro, D. 2018. Brazil Trawl-Caught Turtles. Data downloaded from OBIS-SEAMAP (<http://seamap.env.duke.edu/dataset/951>) on December 4, 2018. (2) STAT. (3) OBIS-SEAMAP.
SWOT Contact: Danielle Monteiro

Data Record 7 | SWOT ID: 1148
Project Title: Neonates Tagged Off Brazil
Project Partners: Fisheries Bycatch Research Group; Yonat Swimmer, Projeto TAMAR; and NOAA, University of Central Florida
Metadata: 4 juvenile *Caretta caretta*; tags deployed in 2013
Data Sources: (1) Swimmer, Y. 2017. Neonates tagged off Brazil. Data downloaded from OBIS-SEAMAP (<http://seamap.env.duke.edu/dataset/1148>) on December 4, 2018. (2) STAT. (3) OBIS-SEAMAP.
SWOT Contact: Yonat Swimmer

Data Record 8 | SWOT ID: 984
Project Title: Study of the Biology of Sea Turtles in Brazil through Satellite Telemetry
Project Partner: Projeto TAMAR-IBAMA

Metadata: 15 adult *Eretmochelys imbricata*; 5 adult *Dermochelys coriacea*; 10 adult *Caretta caretta*; 10 adult *Lepidochelys olivacea*; tags deployed in Brazil in 2005 and 2006
Data Sources: (1) Lopez, G. 2018. Study of the Biology of Sea Turtles in Brazil through Satellite Telemetry. Data downloaded from OBIS-SEAMAP (<http://seamap.env.duke.edu/dataset/984>) on February 10, 2020, and originated from Satellite Tracking and Analysis Tool (STAT; http://www.seaturtle.org/tracking/index.shtml?project_id=63). (2) STAT. (3) SWOT Online Database.
SWOT Contact: Gustavo Lopez

Data Record 9
Project Title: Study of Habitat Use by Loggerhead Turtles in Southern Brazil
Project Partner: Danielle Monteiro, Projeto TAMAR—NEMA/FURG
Metadata: 16 *Caretta caretta*; tags deployed in southern Brazil
Data Source: Monteiro, D. 2016. Satellite tracking of loggerhead turtles in southern Brazil. Personal communication. In *SWOT Report—State of the World’s Sea Turtles*, vol. XI (2016).

CABO VERDE

Data Record 10 | SWOT ID: 346
Project Title: Cabo Verde (Proyecto Aegina): Males and Females
Project Partners: Instituto Canario de Ciencias Marinas (ICCM), Gobierno de Canarias; Instituto Nacional de Desenvolvimento das Pescas (INDP); Direcção Geral do Ambiente; and Ministerio de Ambiente, Agricultura e Pescas
Metadata: 3 adult *Caretta caretta*
Data Sources: (1) Cruz, N. 2018. Cabo Verde (Proyecto Aegina): Males and females. Data downloaded from OBIS-SEAMAP (<http://seamap.env.duke.edu/dataset/346>) on December 4, 2018. (2) STAT. (3) OBIS-SEAMAP.
SWOT Contact: Nuria Cruz

Data Record 11 | SWOT ID: 1442
Project Title: Cabo Verde: LIFE *Caretta caretta*
Project Partner: LIFE *Caretta caretta*
Metadata: 4 adult *Caretta caretta*; tags deployed in 1999

Data Sources: (1) Cruz, N. 2018. Cabo Verde. Data downloaded from OBIS-SEAMAP (<http://seamap.env.duke.edu/dataset/1442>) on December 4, 2018. (2) STAT. (3) OBIS-SEAMAP.
SWOT Contact: Nuria Cruz

CANADA

Data Record 12
Metadata: 11 *Caretta caretta*; tags deployed at sea
Data Source: James, M., and Sea Turtle Unit, Fisheries and Oceans Canada. 2019. Personal communication. In *SWOT Report—State of the World’s Sea Turtles*, vol. XIV (2019).
SWOT Contact: Mike James

CANARY ISLANDS (SPAIN)

Data Record 13 | SWOT ID: 496
Project Title: Canary Islands: OAG
Project Partners: Observatorio Ambiental Granadilla; Sociedad de Estudio de Cetáceos en el Archipiélago Canario; Centro de Gestión de Biodiversidad, Departamento de Biología, Universidad de Las Palmas de Gran Canaria; and Centro de Recuperación de Fauna Silvestre, Cabilido Insular de Gran Canaria
Metadata: 18 juvenile and 1 subadult *Caretta caretta*; tags deployed between 2008 and 2010
Data Sources: (1) Machado, A. 2017. Canary Islands: OAG. Data downloaded from OBIS-SEAMAP (<http://seamap.env.duke.edu/dataset/496>) on December 4, 2018. (2) STAT. (3) OBIS-SEAMAP.
SWOT Contact: Antonio Machado

Data Record 14
Project Title: Juvenile Loggerheads (1999–2000) tagged in the Canary Islands
Project Partners: Universidad de Las Palmas de Gran Canaria and Sociedad Herpetológica Española
Metadata: 5 juvenile *Caretta caretta*; tags deployed in the Canary Islands
Data Source: Universidad de Las Palmas de Gran Canaria and Sociedad Herpetológica Española. 2017. Program number 01602: Proyecto Life B4-3200/97/247 de apoyo a la conservación del

SWOT

The State of the World's Sea Turtles

report

Volume XV



SPECIAL FEATURE

Sea Turtles of the Caribbean

INSIDE:

INDIAN OCEAN LOGGERHEADS

DRONES FOR CONSERVATION

JAGUARS

AND MORE ...