

(Reprinted from "Rhodesia Agricultural Journal.")

Vol. 49, No. 5

September-October, 1952

Page 255

ISSUED BY AUTHORITY OF

The Minister of Agriculture and Lands

Notes on Indigenous Trees and Shrubs of S. Rhodesia

Albizzia gummifera

Gmel C. A. Sm.

(Syn. *A. fastigata* (E. May) Oliv.)

(Mimosaceae)

By A. A. PARDY, Conservator of Forests (Research).

SALISBURY :

PRINTED FOR THE GOVERNMENT STATIONERY OFFICE
BY THE ART PRINTING WORKS, LTD., SALISBURY.

Albizia gummifera Gmel C. A. Sm.
(Syn. *A. fastigata* (E. May) Oliv.)
(Mimosaceae)

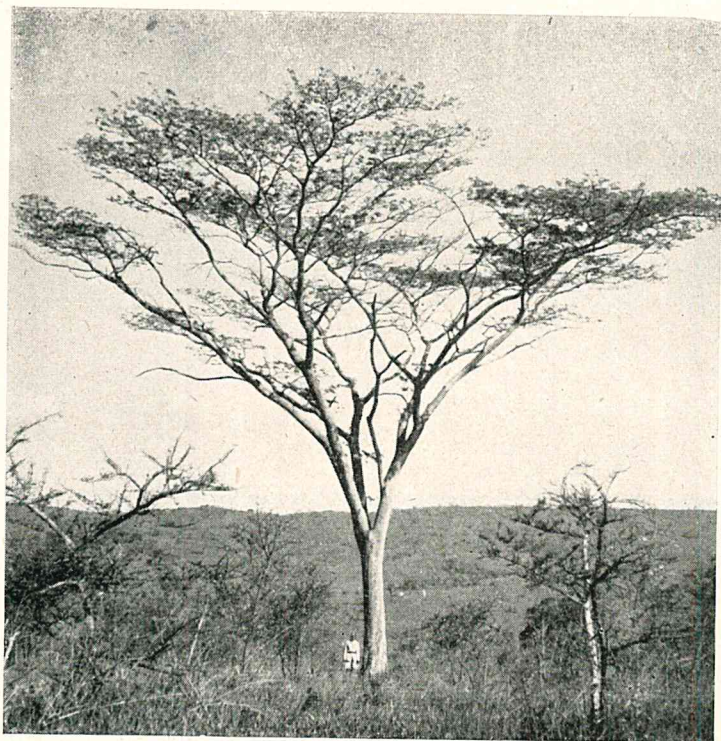
Common Name.—Flat crown, munjerenje. **Native Names.**—munjerenje, murenjerenje, mupambangoma (Chis.).

General Description.—The munjerenje is a flat-crowned tree which is commonly about 60 feet high, but may be found taller than this. It usually has a fairly long, straight bole. The leaves, which consist of many leaflets, are bipinnate and alternate with the base of the finely hairy leaf stalk pulvinate and swollen. There is an obvious gland on the leaf stalk near its base. The sessile leaflets, which are dark green and shiny above, are of an obliquely oblong shape. The main vein of each leaflet is diagonal, whilst a smaller main vein is along the margin of the leaflet. The rounded apex of each leaflet ends in a minute point. There are stipules, but these fall off early. The flowers, which are to be seen mainly during December and November, are on stalked heads. Each flower consists of a long staminal tube much exerted from the corolla. The white corolla and crimson exerted portion make the flowers showy. The fruits are straight, flat pods about 5 inches long and 1 inch wide, containing oblong seeds. The bark is grey and fairly smooth.

Distribution.—Typically, this tree is found in the higher rainfall areas of this Colony and good specimens may be seen, for example, in the Mount Silinda and Vumba areas. It is fairly widely distributed in Central and Southern Africa.

Uses.—The timber of this tree is useful for such purposes as furniture, shelving and parquet flooring blocks. On account of its toughness, it is also useful for naves. The heartwood is of an even yellow colour, tough and of medium hardness. Its air dry weight is about 38 lb. per cubic foot. The logs usually saw easily and boards season quickly and satisfactorily. It works easily.

It can be easily raised from seed and makes an attractive ornamental tree.



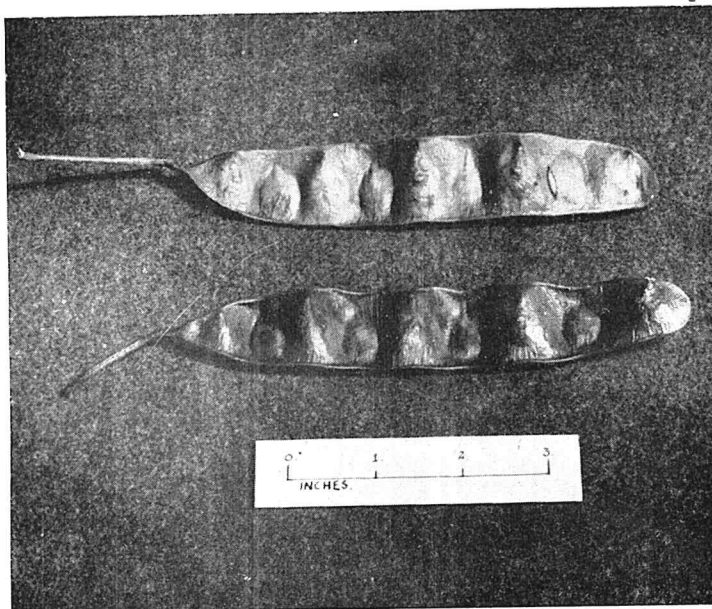
Albizzia gummifera.
Habit photo.

[Photo. by G. L. Guy.]



Albizzia gummiifera.
Leaves and flowers.

[Photo. by A. A. Pardy.]



Albizzia gummiifera.

[Photo by Public Relations Dept.]