

(Reprinted from "Rhodesia Agricultural Journal.")

Vol. 51, No. 2

March-April, 1954

Page 109

ISSUED BY AUTHORITY OF

The Minister of Agriculture and Lands

Notes on Indigenous Trees and Shrubs of S. Rhodesia

Acacia robusta Burch
(Mimosaceae)

By A. A. PARDY, Chief Research Officer, Forestry Commission

SALISBURY:

PRINTED FOR THE GOVERNMENT STATIONERY OFFICE
BY THE ART PRINTING WORKS, LTD., SALISBURY.

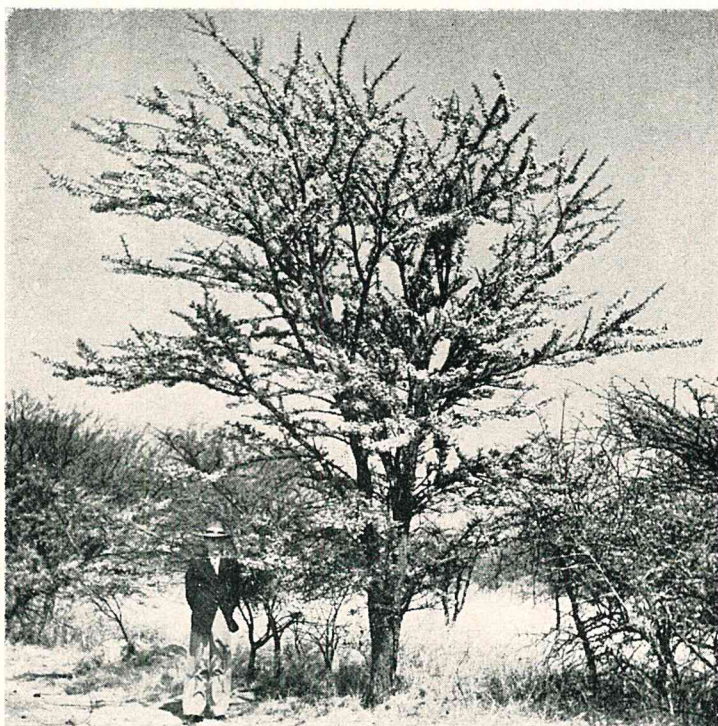
Acacia robusta Burch
(Mimosaceae)

Common Name.— —. **Native Name.**—Umshabunga (Sind.).

General Description.—This acacia is a robust, branchy tree of usually an erect habit of growth with a more or less rounded top. It grows to a height of about 30 feet. The conspicuous, paired, straight, white spines set on cushions vary in length up to about 3 inches. On distinct cushions immediately above each pair of spines are clusters of leaves. Each leaf consists of 2-5 pairs of pinnae or branchlets, a small gland being at the junction of the apical pair. On each pinna are about 8-14 pairs of almost stalkless pinnules or leaflets. Each leaflet is of an oblong shape and just under $\frac{1}{2}$ inch long by about $\frac{1}{8}$ inch wide. The flowers appear during September and are on the cushions with the new leaves. They are in round heads or pompoms and are of an off-white colour. The fairly flat, brown, hairless pods are woody, very slightly curved and are usually 3-4 inches long (but may be longer) by about $\frac{3}{4}$ inch wide. Distinct veining or striations can be seen on the pods. The fairly rough bark is of a blackish-brown colour.

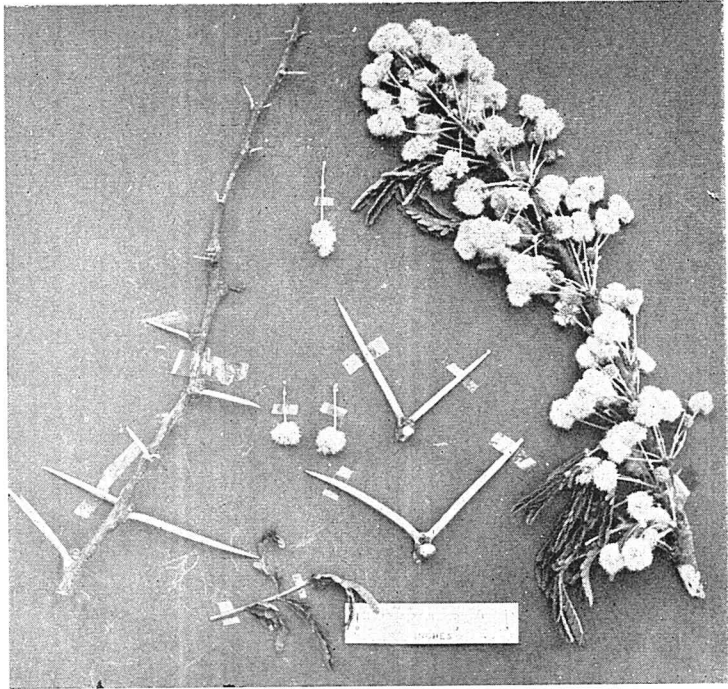
Distribution.—This acacia is confined to more or less the southern part of Southern Rhodesia. It is common in the Bulawayo and Matopos areas and occurs in adjoining territories to the south.

Uses.—No uses are known. The timber has little or no value and is said to be of little use even as a fuel wood. On the other hand, this tree cannot be dismissed as useless if for no other reason than on account of the lovely sight it is when flowering against a clear blue sky in the hot, dry weather of September.

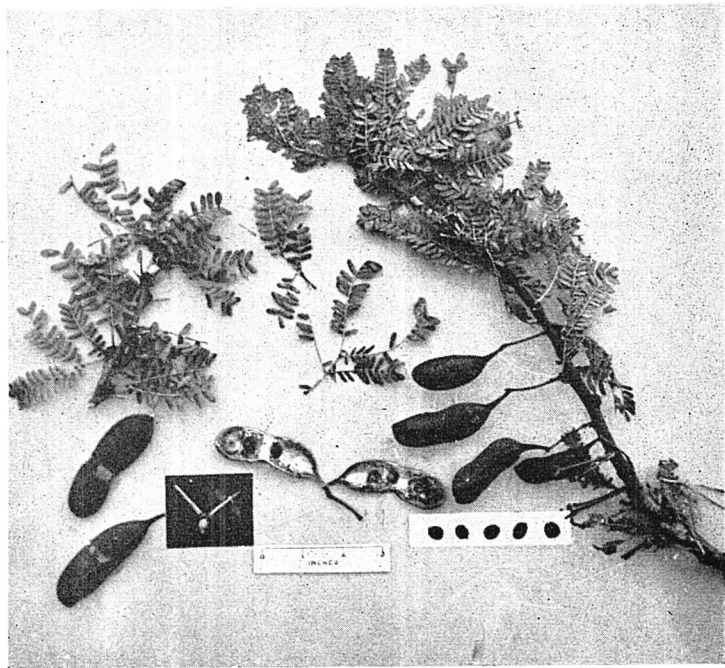


Acacia robusta
Habit photo of tree in full flower

[Photo by A. A. Pardy.]



Acacia robusta
Showing flowers, young leaves and spines
[Photo by A. A. Pardy.]



Acacia robusta
Leaves, pods and seeds
[Photo by A. A. Pardy.]