

RECORDED AT
H.O.
[Handwritten signature]

Bulletin No. 1760

(Reprinted from "Rhodesia Agricultural Journal")

Vol. 51, No. 2

March-April, 1954

Page 111

ISSUED BY AUTHORITY OF

The Minister of Agriculture and Lands.

Notes on Indigenous Trees and Shrubs of S. Rhodesia

Guibourtia conjugata (Bolle)
J. Leonard
(Caesalpiniacea)

By A. A. PARDY, Chief Research Officer, Forestry Commission

SALISBURY:
PRINTED FOR THE GOVERNMENT STATIONERY OFFICE
BY THE ART PRINTING WORKS, LTD., SALISBURY.

Guibourtia conjugata (Bolle) J. Leonard
(Caesalpinaceae)

Common Name. —. **Native Names.**—Mutsotso, mungedge (Chis.); ngonya (Sind.).

General Description.—This is one of our less common trees but is of botanical interest, being closely allied to two other trees mentioned in these notes, viz.: *Guibourtia coleosperma* and *Colophospermum mopane*. All three were formerly known by the generic name of *Copaifera*. A photograph showing a leaf of each appears with these notes. *G. conjugata*, which is deciduous, grows to a height of about 45 feet and is fairly conspicuous on account of its pinkish-grey and fairly smooth bark and usually fairly straight stem. The leaves, which resemble those of *G. coleosperma* more than those of *C. mopane*, are alternate and each leaf consists of two eccentrically-shaped leaflets each of which has a more or less rounded tip. The veining is distinctive and conspicuous. The small white flowers, which usually are to be seen during December, are in loose bunches or panicles. The pods are flat and fairly round and taper at the stalk end. Each pod contains one thin flat seed.

Distribution.—This tree is of limited distribution in hot, dry areas. It is to be found in the Wankie area and in the south-eastern corner of this Colony. It also occurs in the Transvaal and Portuguese East Africa where these territories meet at the south-eastern corner of this Colony.

Uses.—The wood is hard and heavy, the sapwood being of a light yellowish-white colour and the durable heartwood, which is of attractive appearance, is of a streaked dark- and medium-brown colour. Owing to its limited distribution and hardness, little use is made of it. It should be suitable for parquet flooring blocks and certain items of fixed furniture such as counter tops. It makes a good fencing timber.



Guibourtia conjugata

Habit photo

[Photo by E. J. Kelly Edwards.]

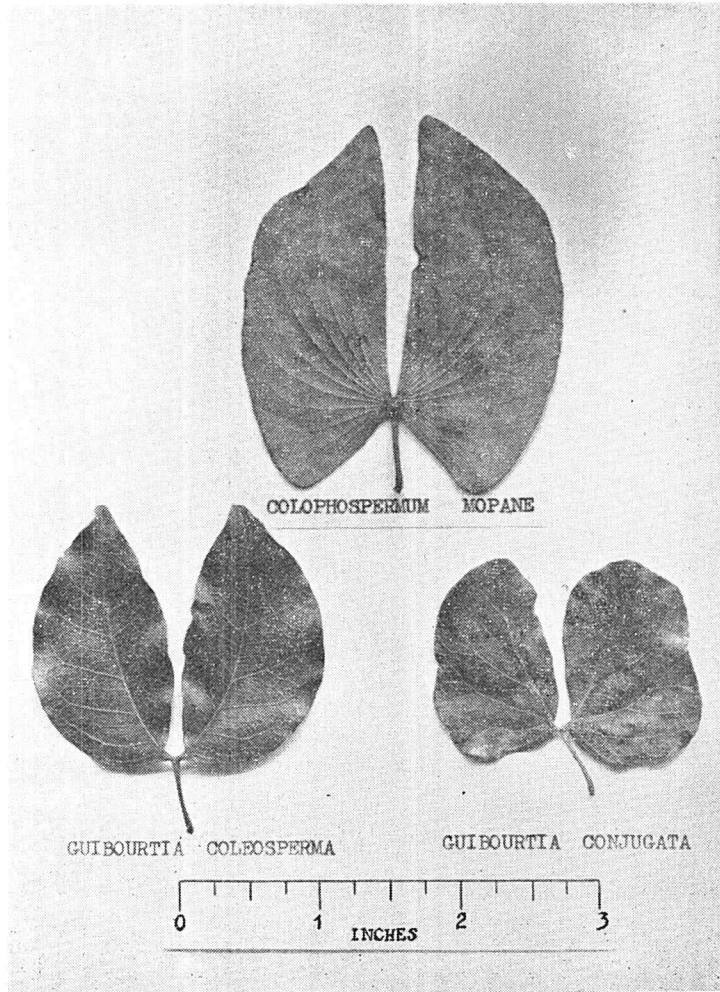
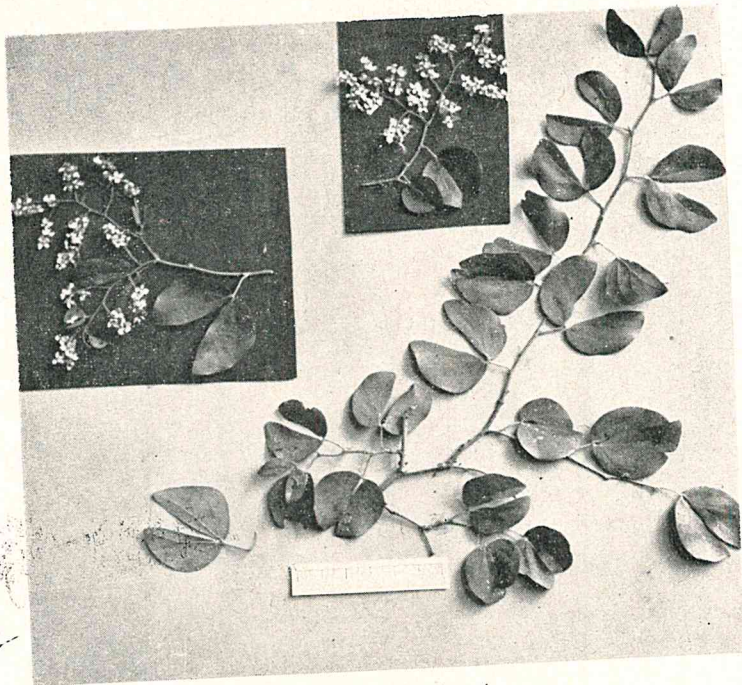


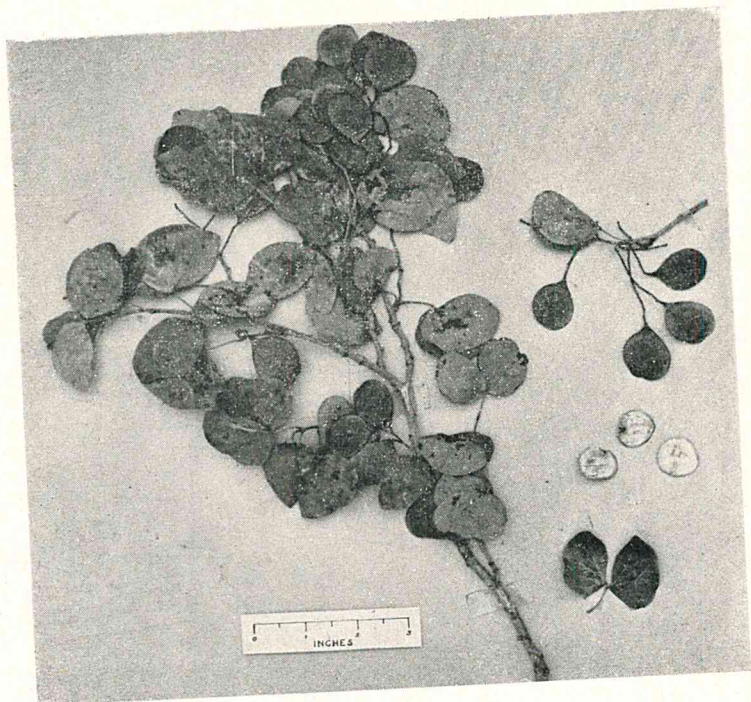
Illustration of form and venation of leaves of *Guibourtia conjugata*,
G. coleosperma and *Colophospermum mopane*

[Photo by Public Relations Department.]



Guibourtia conjugata
Leaves and flowers

[Photo by D. T. Carter.]



Guibourtia conjugata
Leaves, fruits and seeds

[Photo by A. A. Pardy.]