

ISSUED BY AUTHORITY OF

The Ministry of Agriculture

Notes on Indigenous Trees and Shrubs of S. Rhodesia

Halleria lucida L.
Scrophulariaceae

By A. A. PARDY, Chief Research Officer, Forestry Commission.

SALISBURY:

PRINTED FOR THE GOVERNMENT STATIONERY OFFICE
BY THE ART PRINTING WORKS, LTD., SALISBURY.

Halleria lucida L.
Scrophulariaceae

Common Name.— ———. **Native Name.**—M̄baratsodza
(Chis.).

General Description.—This is a shrub or small tree. The leaves are simple, opposite and pinnately-nerved. The petioles are about $\frac{1}{2}$ in. long, channelled and the base somewhat clasps the twig. The hairless blade of the leaf, which is of a thin leathery texture, is about $1\frac{1}{2}$ - $3\frac{1}{2}$ in. long and is of an ovate shape with a pointed tip and a broadly wedge-shaped base. Leaf margins are finely notched except at the base, and mid-ribs are prominent on the lower surfaces. There are no stipules. The showy tubular flowers of a deep orange colour are in few-flowered clusters on the older twigs and branches. Flowering can be seen at different times but is probably at its best at the beginning of the rainy season. Fruits of a dark purplish colour when ripe are sub-globose berries, about $\frac{1}{2}$ in. in diameter containing a large number of seeds.

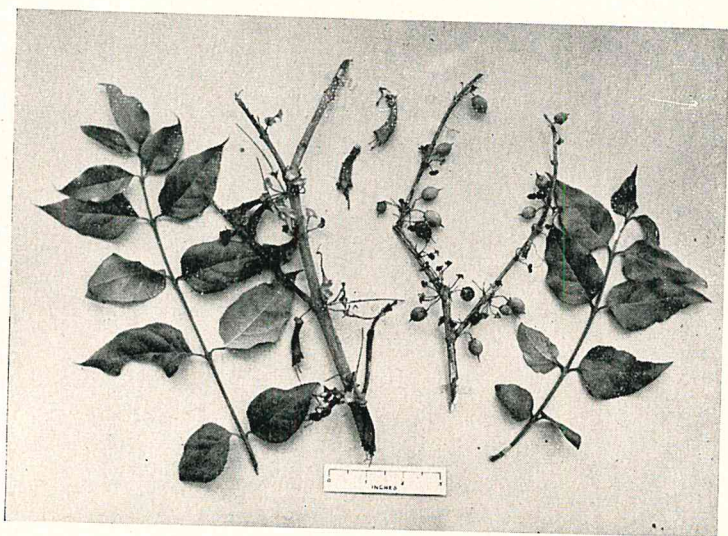
Distribution.—*H. lucida* is confined to the higher rainfall areas of our Eastern Border. It also occurs in adjoining territories.

Uses.—No special uses are known. In the Union Natives are said to use the juice from moistened dry leaves for the relief of earache and to use the plant as a charm against evil.



Halleria lucida.
Habit photo.

[Photo. by A. A. Pardy.]



Halleria lucida.
Leaves, flowers and fruits.

[Photo. by A. A. Pardy.]