

A.P.E.
UNRECORDED AT
H.O.
D

Bulletin No. 1879

(Reprinted from "Rhodesia Agricultural Journal")

Vol. 53, No. 2

March-April, 1956

Pages 212-213

ISSUED BY AUTHORITY OF
The Ministry of Agriculture

Notes on Indigenous Trees and Shrubs of Southern Rhodesia

Rothmannia urcelliformis (Hiern) Bullock
(Syn. **Gardenia urcelliformis** Schweinf. ex Hiern)
(Rubiaceae)

By
A. A. PARDY
Chief Research Officer, Forestry Commission

Printed by the Government Printer, Salisbury.

Rothmannia urcelliformis (Hiern) Bullock

(Syn. **Gardenia urcelliformis** Schweinf. ex Hiern)

(Rubiaceae)

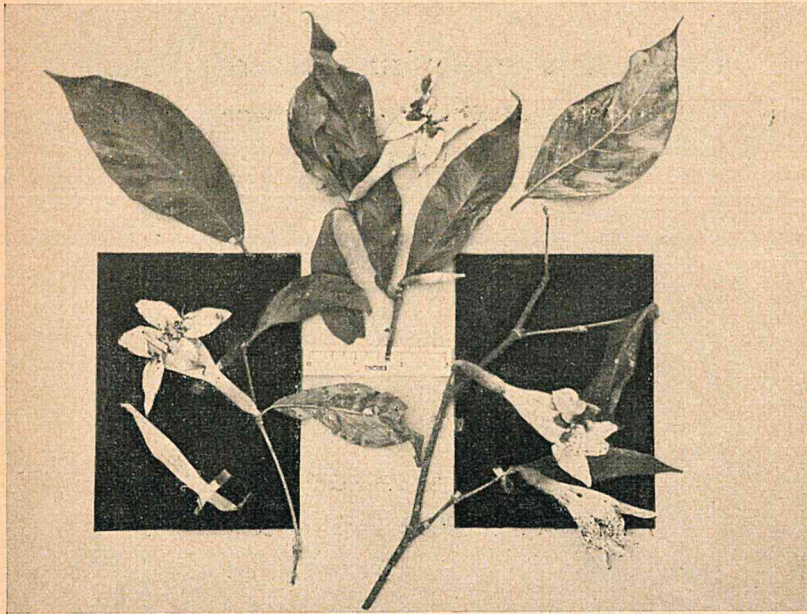
Common Name.—
(Chis.).

Native Name.—Mutambawebungu

General Description.—This medium-sized tree was at one time known as *Gardenia tigrina* Welw. The leaves, which are up to about 6 inches in length, are dark green, simple, entire, opposite, of an elliptical shape with distinctly tapered tips. Midribs and main veins are conspicuous on the under surfaces. Petioles are about $\frac{1}{2}$ inch long and stipules are present. The flowers, which are to be seen during the end of the dry season and earlier part of the rainy season, are of very striking appearance. They are solitary short-stalked, of a whitish colour with purplish blotches, trumpet-shaped, scented and about 3 inches long. The fruit is about the size and shape of an orange and contains numerous seeds.

Distribution.—This tree is of limited distribution in Southern Rhodesia and occurs mainly in the Mount Selinda Forest. It occurs to the north as far as Uganda.

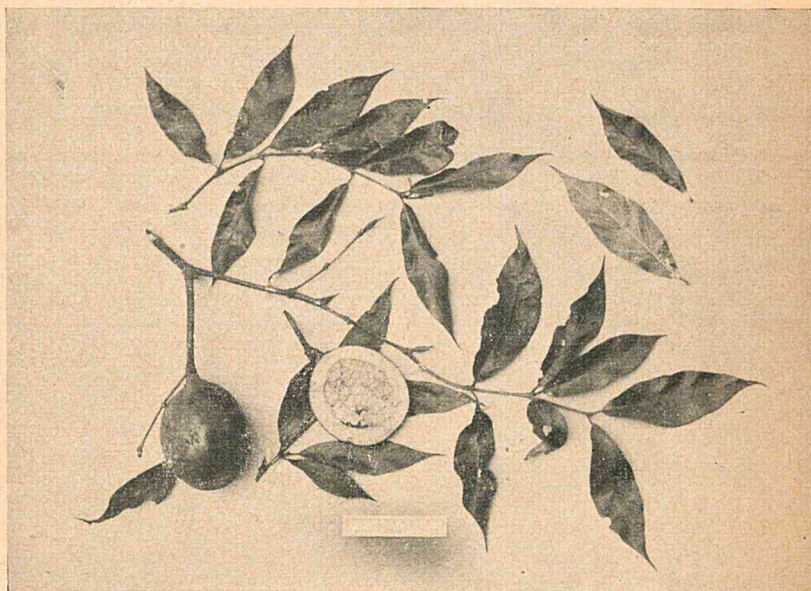
Uses.—No special uses are known. It has been stated that the fruits are eaten by monkeys.



Rothmannia urcelliformis

Leaves and flowers.

[Photo by: A. A. Pardy.]



Rothmannia urcelliformis

Leaves and fruit.

[Photo by: A. A. Pardy.]