

Nicole Wreford

From: Tracy Churchill
Sent: Tuesday, 28 May 2024 10:37 AM
To: The Relay Mailout List
Subject: The Relay 58



The Relay 58

Published 28/05/2024



We acknowledge the Traditional Owners of country throughout Western Australia and their continuing connection to land, sea and community. We pay our respects to them, their culture and to their Elders past and present.

We hope this newsletter finds you in good health and high spirits, looking forward to the change in seasons.

Please forward to your team and anyone you think would find it useful.

You can join **The Relay Mailout** group to receive this post as a newsletter.

Banner image: Jilgu National Park signing ceremony

[Join The Relay Mailout list here](#)

In this issue

- [Newly created jointly managed Jilgu National Park](#)
- [Outdoor and Adventure Tourism package](#)
- [Getting it right at Garaan-ngaddim](#)
- [Improvement project pages on the internet](#)
- [Collie and Dwellingup now premier Trails Towns](#)
- [Successful trial of automated visitor monitoring equipment](#)
- [Biggest capital works year ever!](#)
- [Big Day Out training session](#)
- [Campground host induction day](#)
- [Camping revenue takes a turn](#)
- [Evaluating effectiveness of joint management](#)
- [New joint management communication resources](#)
- [PVS training and professional development](#)
- [PVS staff news](#)

Jilgu National Park created in Midwest-Gascoyne region

Ashley Cull, Gascoyne district

In March, a new national park was created in the Mid West-Gascoyne region, following the implementation of an agreement between Jidi Jidi Aboriginal Corporation and the State Government.

Staff from the Midwest, Gascoyne and Kensington offices met in Meekatharra to travel to Yulga Jinna for the celebration. Staff were joined by Reece Whitby MLA, Peter Foster MLC, and DBCA Director General Stuart Smith.

During the celebration all were treated to a special performance by the Yulga Jinna school students singing their community song "[Hanging around in Yulga Jinna](#)" and moving speeches from JJAC Chair Michelle Riley and Minister Reece Whitby.

A highlight for all was the exciting signing of the Jilgu National Park certificate of creation. The school students joined JJAC Chair Michelle Riley, Minister Reece Whitby, and DG Stuart Smith in signing the certificate and held them up proudly for all to see.

[Read news post here](#)



Outdoor and Adventure Tourism package

Paul McCluskey, Capital works and asset management

The State Government has announced a new investment package targeting campgrounds, trails, visitor facilities and an extension of Penguin Island jetty.

The package includes \$32.85 million for Parks and Wildlife Service through the 2024-25 State Budget over 4 years. This follows the (mostly) finalised WA Recovery Plan initiative. Investment in trails and campgrounds continues with this government providing significant funding for these experiences since election in 2017.

\$3 million is included for major works on the Gloucester Tree and Bicentennial Tree to secure their future as tourism attractions in the South West. The [climbing trees were closed in 2023](#) when structural issues with the steel platforms atop both the trees were identified.

[Read news post here](#)



Getting it right at Garaan-ngaddim Horizontal Falls

Jacinta Overman, Tourism and concessions branch

In mid-March 2024, the [State Government announced](#) that "tourism at Horizontal Falls is set for a refresh, as State Government, tourism operators and Traditional Owners work to strike a balance between promoting tourism and protecting the environment at the famous tourism attraction". Crossing through Horizontal Falls will be phased out by March 2028 and new tourism experiences will be developed.

The Dambeemangaddee Traditional Owners have said -

This is not about stopping tourism or closure. Dambeemangaddee Traditional Owners welcome visitors on our beautiful country. We hope that Talbot Bay and Garaan-ngaddim will continue to attract visitors to this iconic destination. But it is about moving away from dangerous thrill rides. We believe there are better ways that visitors can experience the magic of Horizontal Falls and support us to protect this sacred site.

There is broad agreement from tourism operators about the need to re-market the falls from a 'thrill ride' experience to a more culturally respectful experience. There is also support for ongoing collaboration between DAC and the tourism industry to establish culturally appropriate visitor experiences.

[Read news post here](#)



Communicating improvements to Yellagonga Regional Park

Improvement project pages on internet

Have you noticed new pages popping up on the internet showcasing improvement projects around the State?

Here's a taster -

- [John Forrest National Park Improvement Project](#)
- [Leeuwin-Naturaliste National Park Improvement Project](#)
- [Karijini National Park Improvement Project](#)
- [Yellagonga Regional Park Improvement Project](#)

These community information pages provide information about projects, timelines, sometimes plans and media release videos starring Hon Reece Whitby and our staff.

Check them out.

[Link to Parks | DBCA internet](#)



Image: Trails WA media release

Collie and Dwellingup crowned as WA's premier Trail Towns!

The Trail Town initiative aims to boost Western Australia's regional centres by promoting these towns as tourism hotspots and showcasing how these communities have a strong connection to their local trail networks.

The Trail Town standards, developed in partnership with DBCA and DLGSC, are the backbone of this initiative and cover criteria such as trail infrastructure, landscapes, tourism marketing, maintenance, and community engagement.

By meeting these rigorous standards, regional towns can earn the esteemed title of a WA Trail Town and proudly display the Trail Town logo in their promotions.

[Read Trails WA media release here](#)



Successful trial of automated visitor monitoring equipment

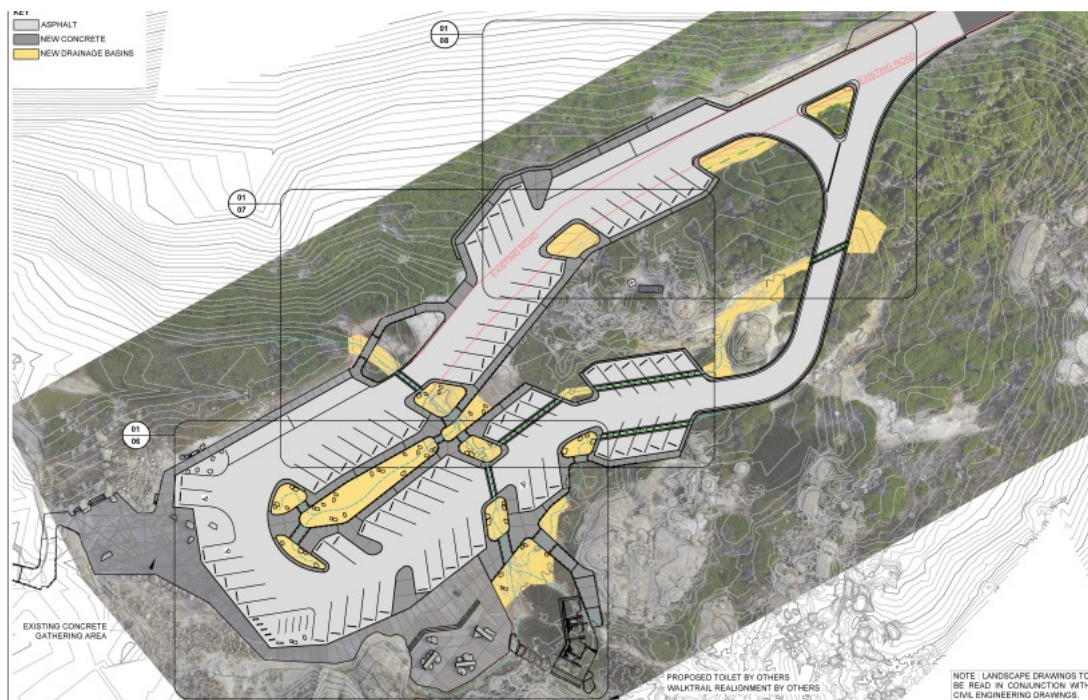
Brooke Shields, Visitor and social research unit

After a successful trial of the automated monitoring equipment at a number of sites over the past few years, the indicator sites monitoring program will be rolled out across the state starting in 2024-2025.

The key benefits of the automated indicator sites include improved availability and timeliness of data at key sites across the state to determine visitation trends, reliable and timely data for data requests including Ministerials, media enquiries, executive reporting and infrastructure planning purposes, and reduced resourcing requirements for regional staff who currently manually install and maintain equipment and extract data the data every month.

More information, including the indicative installation schedule, can be found [here](#).

Open details here



Biggest capital works year ever!

Paul McCluskey, Capital works and asset management

It's been 'heads down' for some time now but we're charging towards the end of a massive year for capital works. In fact, [largest one ever!](#)

There was \$89.38 million budget allocated for PVS asset investment this financial year and although this amount will not all be spent, expenditure will be significant. 2023/24 has seen the completion or significant progress of many project from WA Recovery Plan, 2017 election commitments and 2021 election commitments. The largest program has been for the 2021 election commitments at \$46.91M and it's the last year of the WA Recovery Plan at \$27.5M.

Progress on most projects has been as good as expected however it's no secret that the pressure on the building and construction industry continues to impact on our capacity to deliver, with tenders coming in too high, contractors and skilled labour difficult to source, supply chain issues and material shortages along with resource capacity. Despite this, we have achieved a \$34.5M estimated expenditure for the end of April this year. Traditionally, May and June are busy months for invoices and closure of projects so we expect this to increase.

[Read more here and check out the photos](#)



Big Day Out training session

Nathan Greenhill, Recreation, planning and design unit

In April, the Recreation, planning and design Unit undertook a training day in Kalgulup Regional Park to upskill staff in the use of the units drone and site survey equipment as well as install an in-house designed trial stair that is planned for use on the Cape to Cape.

The unit uses a drone that is capable of taking high quality geo-located imagery that can be used to create three-dimensional models of the landscape. The site surveying equipment, known as the 'rover', allows us to survey site features with accuracy of less than 10mm where there is mobile reception, and anywhere between 50-100mm without mobile reception.

We can pair the drone and rover together to then create highly accurate imagery and 3D models (to 10mm precision) without the immediate need to engage a surveyor. This saves the Department project time and consultancy costs.

The team finished with a walk and explore of the recently completed Maidens Lookout, design by the Unit, and to soak in the view from the top!

[Read more here and check out the photos](#)



Campground host induction day

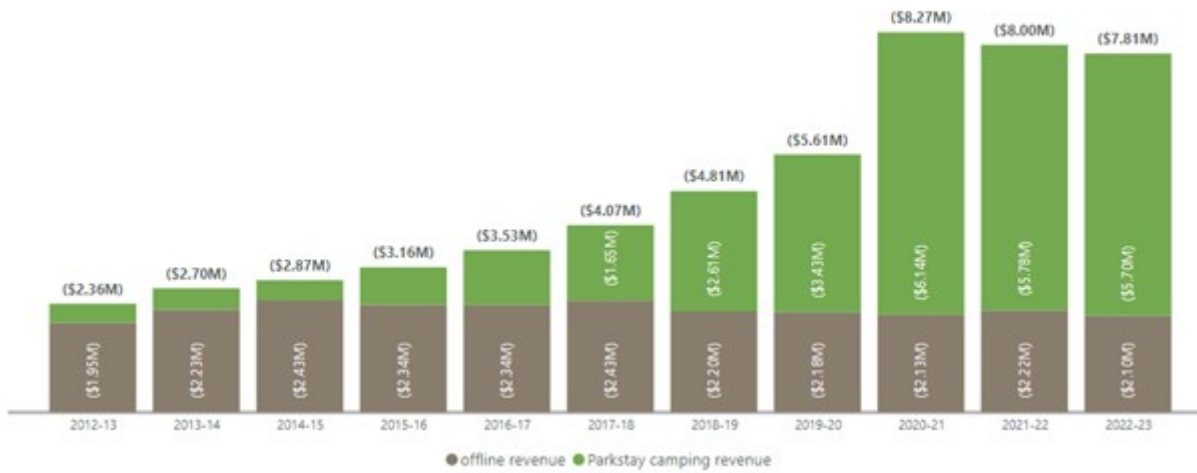
Sallie HoyPoy, Volunteer coordination unit

We welcomed 43 new volunteers to the [Campground Host program](#) at our first induction day for 2024. The day provided volunteers with the essential information and training required for the program and they are now ready to head out to campgrounds across the state to assist with visitor management and park facilities.

Thank you to the staff from the Blackwood and Esperance districts and Wheatbelt, Midwest and Swan regions who made the time to attend on the day and help make it a successful and enjoyable experience. More on the [Campground Host Induction Day here](#)

This day follows a variety of training opportunities for active volunteers including first aid, snake and wildlife awareness and Aboriginal cultural awareness. This training enhances their knowledge and skills to assist in their current roles that have been coordinated and delivered by the Volunteer Coordination Unit. More on the [latest training sessions here](#).

Camping revenue over 10 years



Camping revenue over 10 years

Monthly camping cumulative revenue



2023-24 monthly camping cumulative revenue against previous year

Camping revenue makes a turn

Revenue from camping is the second highest source of PVS managed revenue after entry fees. Unlike entry fees though, camping revenue has been decreasing since an unnatural peak when COVID changed visitor patterns.

We had been steadily growing our camping revenue up to 2019-20, then everyone in WA needed to holiday at home, so things went through the roof. Interestingly, when the borders opened, we didn't see a major drop. Along with new campsites being brought online, the joys of camping have stayed with us. Read more in [Camping is as popular as ever](#) news post.

Current tracking for 2023-24 revenue from camping is seeing a 19% increase from this time last year. A reversal in the downward correction it seems ...

We'll need to wait for the visitor numbers and info from Park Stay but the likely reason for some is the [increase in park fees including camping fees](#) in October 2023.

Open PVS revenue dashboard



Evaluating effectiveness of joint management

Matt Fossey, Coordinator joint management central support

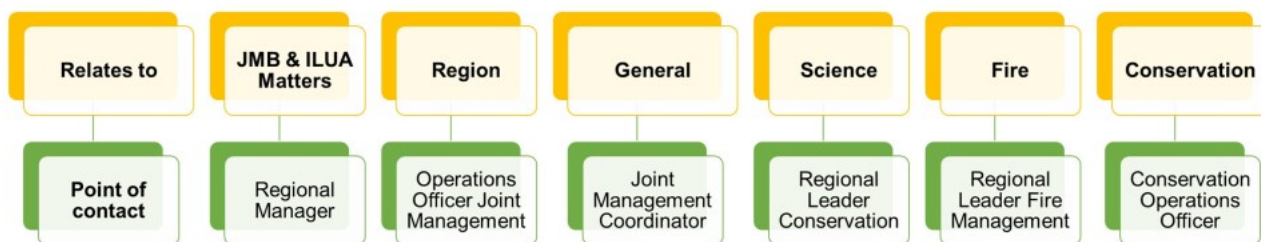
There are a growing number of joint management arrangements in WA. While each partnership is unique, all arrangements involve a Joint Management Body (JMB) comprised of Traditional Owners and senior staff from DBCA. To date, we have been focussed on preparing and implementing joint management plans with limited opportunity for monitoring and evaluating how the arrangements are working – the effectiveness of joint management itself.

In 2023, a local level evaluation of joint management was undertaken with Yawuru Prescribed Body Corporate, one of the DBCA's longer running joint management

partners. In March 2024, Dean Mathews, JMB Chair and NBY staff member and Wil Bennett, DBCA Yawuru Parks Coordinator shared reflections on the evaluation process and provided insight on the findings as part of a presentation to the Conservation and Parks Commission.

[Read news post here](#)

Tjiwarl Communication Flowchart



Position	Name	Phone Number	Email
Regional Manager Goldfields JMB Member (JMB and ILUA matters first point of contact)	Nigel Wessels	(08) 9080 5505 0409 709 636	nigel.wessels@dbca.wa.gov.au
A/ Operations Officer Joint Management	Tiarma Harris		tiarma.harris@dbca.wa.gov.au
Joint Management Coordinator JMB Member	James Piper	0413 730 530	james.piper@dbca.wa.gov.au
Regional Leader Conservation	Vacant		
A/Regional Leader Fire Management	Jewell Crossberg	(08) 9080 5533	jewell.crossberg@dbca.wa.gov.au
Conservation Operations Officer JMB Member	Jessica McNamara	(08) 9372 9744	jessica.mcnamara@dbca.wa.gov.au

New joint management communication resources

Tina Bowers, Aboriginal engagement and heritage

A range of new communication resources are now available for staff and Joint Management Bodies. They were developed assistance from the Midwest and Goldfields regional teams, PICA and Joint management central support staff.

These resources align with the communication pathways, outlined in the Joint Management [Communications Plan](#), and are kept on the [Resources page on Joint management site](#).

[Read more here](#)

PVS training and professional development

It's quiet at the moment with only one training opportunity available.

- 5 - 6 June 2024 - **Trails course** at John Forrest National Park

New to project managing capital works in Parks and Wildlife Service? Check out the [Training framework](#) to assist in your professional development.

[Open PVS Training Hub here](#)

PVS intranet

Upgrades and additions on the PVS intranet continue. A new ['directory' page](#) may provide a easy reckoner to find information about PVS. Try it and let Tracy know of improvements.

[Open PVS intranet](#)

PVS staff news

So ...

- Jess Lindsay appointed as new Manager, Aboriginal Engagement, Planning and Lands Branch
- Stephen Morris joins Midwest Region as Project Officer based in Denham
- Danielle Godwin has left the Visitor and Social Research Uni to pursue her PhD through the [Yagarrajalajalan nagula buru project](#), working with Yawuru Traditional Owners and DBCA
- Leah Seabourn and Teale Audas move on from Tourism and Concessions*
- Ashlee Russell is moving from apiary to leasing
- Sonya Stewart is acting Coordinator Policy and Projects, leading the South West Native Title Settlement and retaining oversight of the Aboriginal Ranger Program
- Helena Waldmann will acting Senior Policy Officer (SWNTS)

- Karla Forrest returning to Executive Support Unit
- Karis Erceg is acting Coordinator Joint Management Central Support
- Carolyn Thomson-Dans continues Project Officer (Communications)
- Michelle Harrison has joined AEPLB one-day per week alongside work in Executive Support Unit
- Opportunity to act in South West PVS Regional Leader for 3 months later this year

*Huge thanks to Leah Seabourn and Teale Audas, who have made a huge contribution to Tourism and Concessions Branch during their time with us, and best wishes as they move on to pursue other opportunities in the next few weeks. Jacinta Overman

Latest news you might have missed



Last Call to Register for the Trails Course



New jetties on the Frankland River



Update on Penguin Island

Yinggarda Aboriginal Corporation Badge Arrives



Volunteers Level Up with Latest Training Sessions

Lalang-gaddam Commercial Tour Operators

Until next time

Thank you for being an integral part of the PVS team. Together, we ensure the natural and cultural values entrusted to us are protected, celebrated and enjoyed by the community.

If you would like to contribute to the next issue of The Relay, please don't hesitate to email therelay@dbca.wa.gov.au.



Tracy Churchill

Visitor and Regional Services Coordinator

[More news and events](#)

[View in SharePoint](#)