

RESERVE ACTION SHEET: CONSERVATION RESERVES

RESERVE No. A3211

LOCAL GOVERNMENT: Shire of Coolgardie

NAME: Dordie Rocks Nature Reserve

PURPOSE: Conservation of Flora & Fauna **VESTING:** Conservation Commission of WA

ACTION

Change of purpose from "Water & Conservation of Flora & Fauna" to "Conservation of Flora & Fauna"

TOTAL AREA: 119.7815ha

REASON FOR ACTION

Reserve 3211 was previously an unclassified reserve vested in the Water & Rivers Commission for the purpose of "Water & Conservation of Flora & Fauna". The upgrading of the reserve to a class "A" nature reserve vested in the CCWA is a recommendation in the *Goldfields Region Regional Management Plan 1994-2004* (Recommendation 10.10.1 – see attached extract from the plan). DoIR agreed to the reserve changes subject to the exclusion of a mining infrastructure corridor (shown as Lot 301 on DP 34965 at p17).

Date of amendment: 12/01/2006

Maps: pp. 17-19

Customer advice: p. 16

Proposal Summary: see pp.

IUCN classification: (if existing reserve)

Recommended IUCN classification: (if new reserve) 1a

NATIVE TITLE: Extinguished by previous vesting (Ward High Court decision)

1	LAND SERVICES CO-ORDINATOR	To note	<i>SL</i>
2	LAND & EXTERNAL FUNDING UNIT	Send copies of advice and maps to: <ul style="list-style-type: none"> • Lisa Wright (Woodvale) • District Manager } <i>Goldfields</i> • Regional Manager } <p>Attach TENIS gazettal history to file <i>✓ p 21</i></p> <p>Add report to Conservation Commission summary</p>	<i>SL</i>
3	SENIOR POLICY OFFICER, P.V.S.	To note re native title	
4	SENIOR POLICY OFFICER, CRAWLEY (for purchases)	To note	<i>N/A</i>
5	DIRECTOR, NATURE CONSERVATION/ DIRECTOR, PARKS AND VISITOR SERVICES	To note	
6	C.I.S.	Please rename file/create new file	
7	LAND & EXTERNAL FUNDING UNIT	Delete from District Proposals spreadsheet	

achieve the multiple objectives of conservation of sandalwood, and flora and fauna without unduly restricting other land uses, particularly mining.

Response to submissions

CALM remains firmly committed to this proposal. The only impediment to implementation is the outcome of the Minister for Minerals and Energy's requirement for Cabinet approval and industry consultation before amending the Mining Act to facilitate granting of mineral tenements on State forests outside the south-west (see page 29).

10.10 MISCELLANEOUS RECOMMENDATIONS CALM'S REVIEW OF B AND C CLASS NATURE RESERVES

In 1988 CALM reviewed all 'B' and 'C' Class nature reserves with a view to either cancelling or upgrading them to 'A' Class. Of the Goldfields Regions recommendations for upgrading only Victoria Rock Nature Reserve has been implemented (Government Gazette, 4 August 1989).

Recommendation 1

That the following outstanding 'C' Class nature reserves be upgraded to 'A' Class nature reserves vested in the NPNCA:

- Dordie Rock No. 3211 in the Shire of Coolgardie
- Kurrawang No. 35453 in the Shire of Coolgardie
- Clear and Muddy Lakes No. 7634 in the Shire of Coolgardie
- Kambalda West No. 33300 in the Shire of Coolgardie
- Binaronca Rock No. 32552 in the Shire of Coolgardie

Justification and Implications

These relatively small reserves each have high conservation values based on the presence of wetlands, unmodified eucalypt woodland, rich vertebrate fauna or geomorphology. Mining would be subject to Government policy.

Response to submissions

With the exception of Dordie Rock Nature Reserve, due to pre-existing tenements and prospectivity, CALM will defer implementation of these proposals pending further mineral exploration or an assessment that continuing exploration or mining is detrimental to their demonstrated conservation values.

Recommendation 2

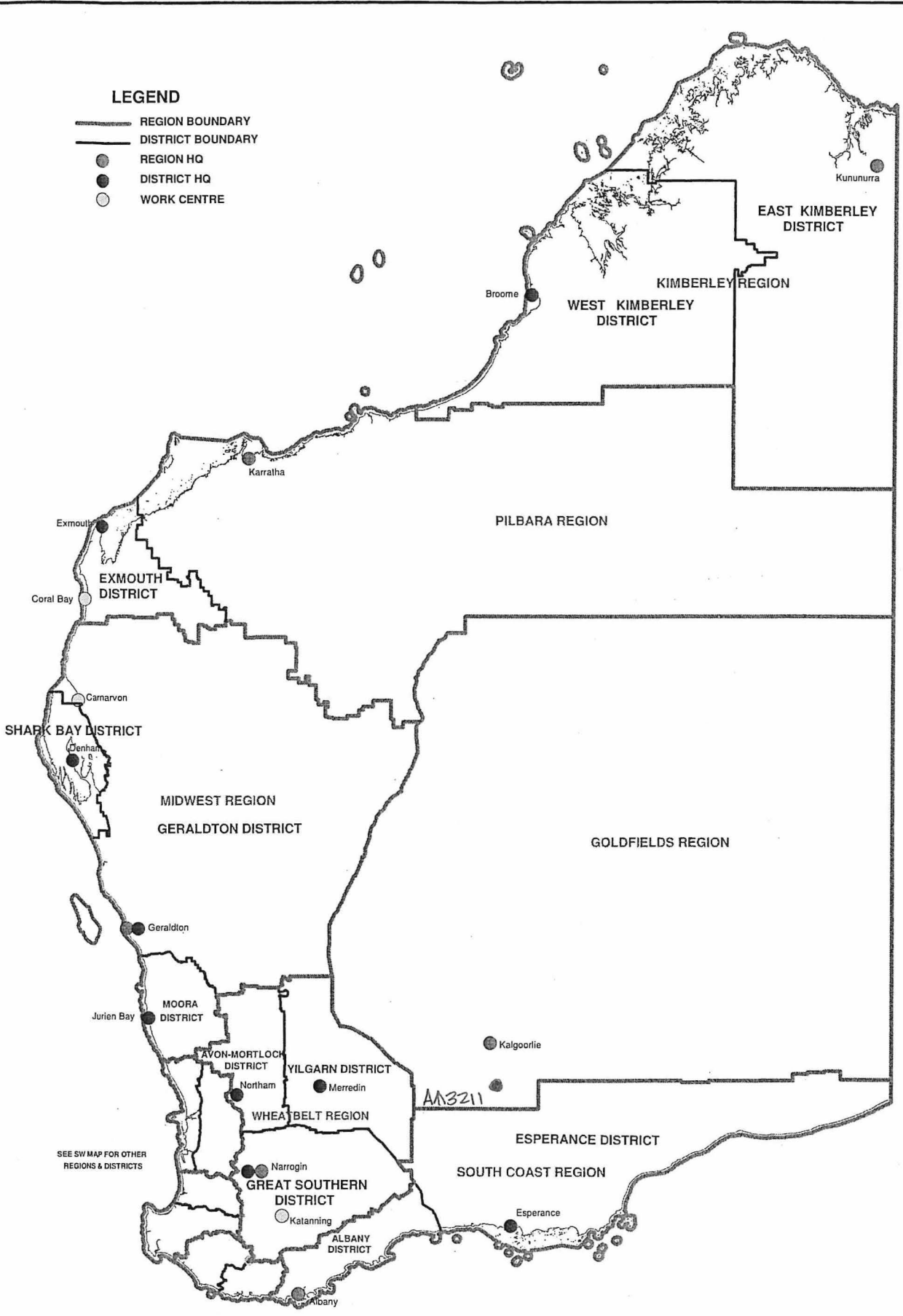
That options for the incorporation of Canegrass Lagoon into Clear and Muddy Lakes nature reserve be investigated.

Justification and Implications

Since the Draft Regional Management Plan was written and public submissions received, the filling of the lake following the wettest year on record, and the Minister for the Environment's

LEGEND

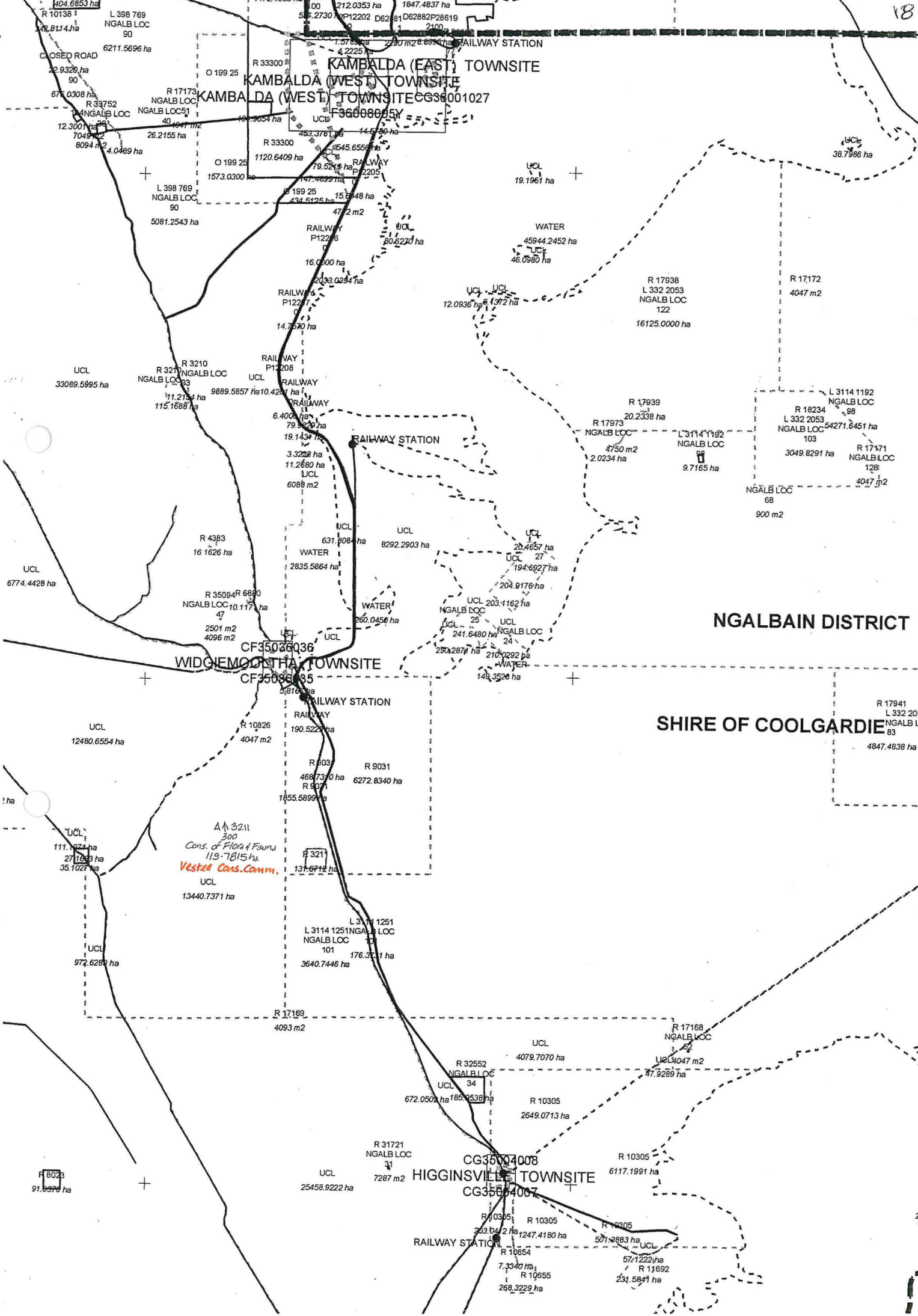
- REGION BOUNDARY
- DISTRICT BOUNDARY
- REGION HQ
- DISTRICT HQ
- WORK CENTRE



SEE SW MAP FOR OTHER REGIONS & DISTRICTS

**DEPARTMENT OF ENVIRONMENT AND CONSERVATION
REGION AND DISTRICT BOUNDARIES**

JULY 2006



4/3211
 300
 Cons. of Flora & Fauna
 119.7815 ha.
 Vested Cons. Comm.

NGALBAIN DISTRICT
SHIRE OF COOLGARDIE

KAMBALDA (EAST) TOWNSITE
KAMBALDA (WEST) TOWNSITE

WIDGIEMOONTHA TOWNSITE

HIGGINSVILLE TOWNSITE

R 8033
91.6970 ha

R 17941
 L 332 206
 NGALB LOC
 83
 4847.4838 ha

CG3504008
 CG3504007

R 10305
6117.1991 ha

R 10305
 268.3229 ha
 R 10305
 1247.4180 ha
 R 10305
 571.222 ha
 R 10305
 291.5841 ha

R 10305
 571.222 ha
 R 10305
 291.5841 ha

L 398 769
NGALB LOC
90
5081.2543 ha

UCL
19.1961 ha

R 17938
 L 332 2053
 NGALB LOC
 122
 16125.0000 ha

R 17172
4047 m2

R 17939
 20.2338 ha
 R 17973
 NGALB LOC
 4750 m2
 2.0234 ha

L 3114 1192
 NGALB LOC
 98
 R 18234
 L 332 2053
 NGALB LOC
 54271.6451 ha
 103
 3049.8291 ha
 R 17471
 NGALB LOC
 128
 4047 m2
 NGALB LOC
 68
 900 m2

RAILWAY STATION

RAILWAY STATION

RAILWAY STATION

R 10138
 L 398 769
 NGALB LOC
 90
 6211.5696 ha

212.0353 ha
 1847.4837 ha
 50.2730 ha
 P12202 D62
 81 D62882 P26619
 2100

CLOSED ROAD
 22.9328 ha
 90
 67.0308 ha
 R 33752
 NGALB LOC
 40.1647 m2
 12.3007 ha
 7049 m2
 8094 m2
 4.0489 ha

R 33300
 O 199 25
 R 17173
 NGALB LOC
 26.2155 ha
 19.9034 ha
 R 33300
 1120.6409 ha
 O 199 25
 1573.0300 ha

R 199 25
 434.5425 ha
 47.2 m2
 RAILWAY
 P12276
 16.0000 ha
 20.32.0384 ha
 RAILWAY
 P12277
 14.7570 ha
 RAILWAY
 P12208
 6.4000 ha
 79.9620 ha
 19.1434 ha
 3.3228 ha
 11.2680 ha
 UCL
 6088 m2

UCL
33089.5995 ha

R 3210
 NGALB LOC
 11.2134 ha
 115.1688 ha

R 3210
 NGALB LOC
 9889.5857 ha
 10.4201 ha
 6.4000 ha
 79.9620 ha

UCL
 12.0936 ha
 UCL
 6.1372 ha

UCL
6774.4428 ha

R 4383
 16.1626 ha
 R 35094 R 6890
 NGALB LOC
 10.117 ha
 47
 2501 m2
 4096 m2

UCL
 631.808 ha
 WATER
 2835.5864 ha
 UCL
 8292.2903 ha
 WATER
 260.0456 ha

UCL
 20.4657 ha
 UCL
 27
 194.6927 ha
 UCL
 204.9176 ha

UCL
 203.1162 ha
 UCL
 25
 241.6480 ha
 UCL
 24
 250.2871 ha
 UCL
 210.0292 ha
 WATER
 149.3526 ha

UCL
12480.6554 ha

R 10826
4047 m2

R 10826
 190.5223 ha
 R 803
 468.7370 ha
 R 9031
 6272.8340 ha
 R 4071
 1855.5899 ha

UCL
 111.7021 ha
 27.1833 ha
 35.1027 ha

UCL
 13440.7371 ha

R 3211
131.6712 ha

L 3114 1251
 NGALB LOC
 101
 176.3211 ha
 3640.7446 ha

UCL
972.6289 ha

R 17169
4093 m2

UCL
4079.7070 ha

R 17168
NGALB LOC
32
UCL
34047 m2
47.9289 ha

R 32552
 NGALB LOC
 34
 672.0502 ha
 185.9538 ha

R 10305
2649.0713 ha

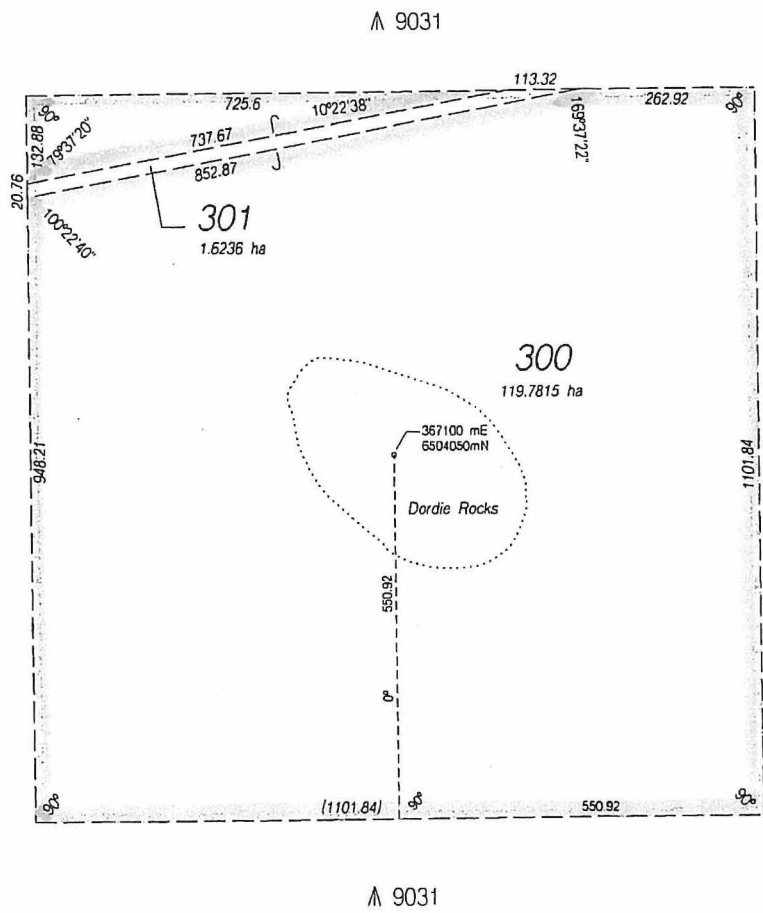
R 31721
 NGALB LOC
 31
 7287 m2

R 10305
6117.1991 ha

R 10305
 203.042 ha
 R 10305
 1247.4180 ha
 R 10305
 571.222 ha
 R 10305
 291.5841 ha

R 10305
 571.222 ha
 R 10305
 291.5841 ha

ED/VER	AMENDMENT	BY	DATE	APPROVED for/Authorized Land Officer	Date
1/2	Addition of Lot 301	PWK	12/9/2005	<i>David Chin</i>	12/9/2005



TYPE		CROWN	
PURPOSE		SUBDIVISION	
PLAN OF			
LOTS 300 & 301			
DISTRICT		NGALBAIN	
DOLA FILE		3562/1968	
TOWNSITE			
LOCAL AUTHORITY		SHIRE OF COOLGARDIE	
LOCALITY			
FORMER TENURE	ON	REFERENCE	
	WIDIEMOOLTHA (250)	Gov.Gaz.17/11/1896 p.66 Carr 3562-1968 p.66	
SCALE: ALL DISTANCES ARE IN METRES			
1:7500			
SUBJECT TO SURVEY NOT FOR ALIENATION PURPOSES			
LODGED DATE	TYPE OF VALIDATION	SURVEY FIRM	
28.11.02	FULL AUDIT... PWK	DOLA - M.B.11/2002	
FEE PAID	LEGAL COMPONENT		
N/A			
ASSESS No.	CERTIFIED CORRECT		
N/A	<i>P. Smith</i> 2/12/02 Manager Statutory Services		
IN ORDER FOR DEALINGS			
SUBJECT TO			
Amendment and redescription of Reserve 3211 to comprise Lot 300			
<i>David Chin</i> 29/11/02 FOR AUTHORIZED LAND OFFICER DATE			
APPROVED			
AUTHORIZED LAND OFFICER		DATE	
		DEPOSITED PLAN	
		34965	
		SHEET 1 OF 1 EDITION 1 VERSION 2	

