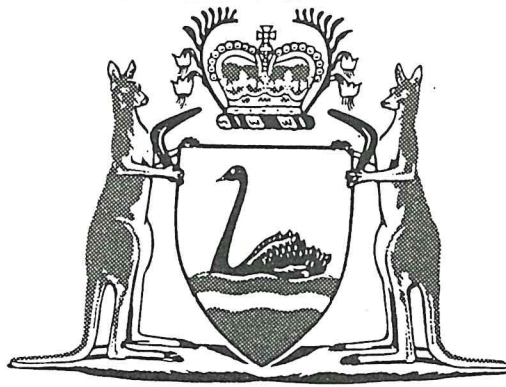


Clerk Woodvale

1089

- 1. LAND TENURE CLERK *19.4.89*
- 2. ASST RESERVES CLERK
- 3. SENIOR CLERK RESERVES
- 4. MAN. W & L
- 5. TIMBER PRODUCTION
- 6. REGISTRAR 9. SC FAUNA
- 7. SC FLORA
- 8. CHIEF CLERK 10 ASST RESERVES

1089-1093, 1108-9, 1119.

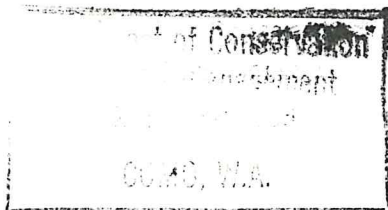


Government Gazette

OF

WESTERN AUSTRALIA

(Published by Authority at 3.30 pm)



No. 36]

PERTH: FRIDAY, 14 APRIL

[1989

Land Act 1933 PROCLAMATION

WESTERN AUSTRALIA
GORDON REID,
Governor.
[L.S.]

By His Excellency Professor Gordon Reid, Companion of the Order of Australia, Governor of the State of Western Australia.

File No. 1900/984.

WHEREAS by section 31 (1) (a) of the Land Act 1933, the Governor may by Proclamation and subject to such conditions as may be expressed therein classify as of Class "A" any such lands of the Crown reserved to Her Majesty for any purpose and whereas it is deemed expedient that the reserves listed in the attached schedule for the purpose of "Conservation of Flora and Fauna" as described, should be classified as of Class "A": Now, therefore I, the Governor, with the advice and consent of Executive Council do by this my Proclamation classify as of Class "A" the reserves described in the attached schedule.

Given under my hand and the Public Seal of Western Australia, at Perth, this 4th day of April 1989.

By His Excellency's Command,
YVONNE HENDERSON
Acting Minister for Lands

GOD SAVE THE QUEEN !

Schedule

File Number	Reserve Number	Land Description	Area (Hectares)	Plan
3354/60	2517	Uduc Agricultural Area Lot 54	41.131 2	Harvey Regional 1:10 000 3.4
2207/894	2547	Uduc Agricultural Area Lot 43	10.117 1	Harvey Regional 1:10 000 3.5
3718/898	5644	Throssell Estate Lots 14 and 87	41.424 6	Grass Valley S.E. 1:25 000
1163/02	8937	Victoria Location 11746	32.941 9	157A/40
13668/03	9159	Plantagenet Location 7606	37.915 1	Chester Pass N.W. 1:25 000
10234/06	10584	Avon Location 28879	20.689 5	Quajabin N.E. 1:25 000
4585/09	12154	Avon Locations 9318, 9319 and 28284	about 61.107 5	Koorda S.W. 1:25 000
8531/08	12329	Avon Locations 9309, 12182, 12208 and 16470	about 160.176 1	Kodj Kodjin
8000/11	14114	Minnivale Lots 65, 87 and 106	about 150.346 0	Minnivale Townsite 1:2 500 9.28, 9.29, 10.28 and 10.29
7039/12	14920	Avon Location 28910	131.212 0	Wyalkatchem S.W. 1:25 000
9821/12	16245	Avon Locations 17996, 20984 and 28825	272.854 4	Koorda N.E. and Lake Wallimbin N.W. 1:25 000
2520/21	17710	Avon Location 28504	107.157 3	Dowerin 1:50 000
4042/53	2096	Tenterden Agricultural Area Lot 41	80.596 1	Geekabee N.E. 1:25 000

Notice to Subscribers

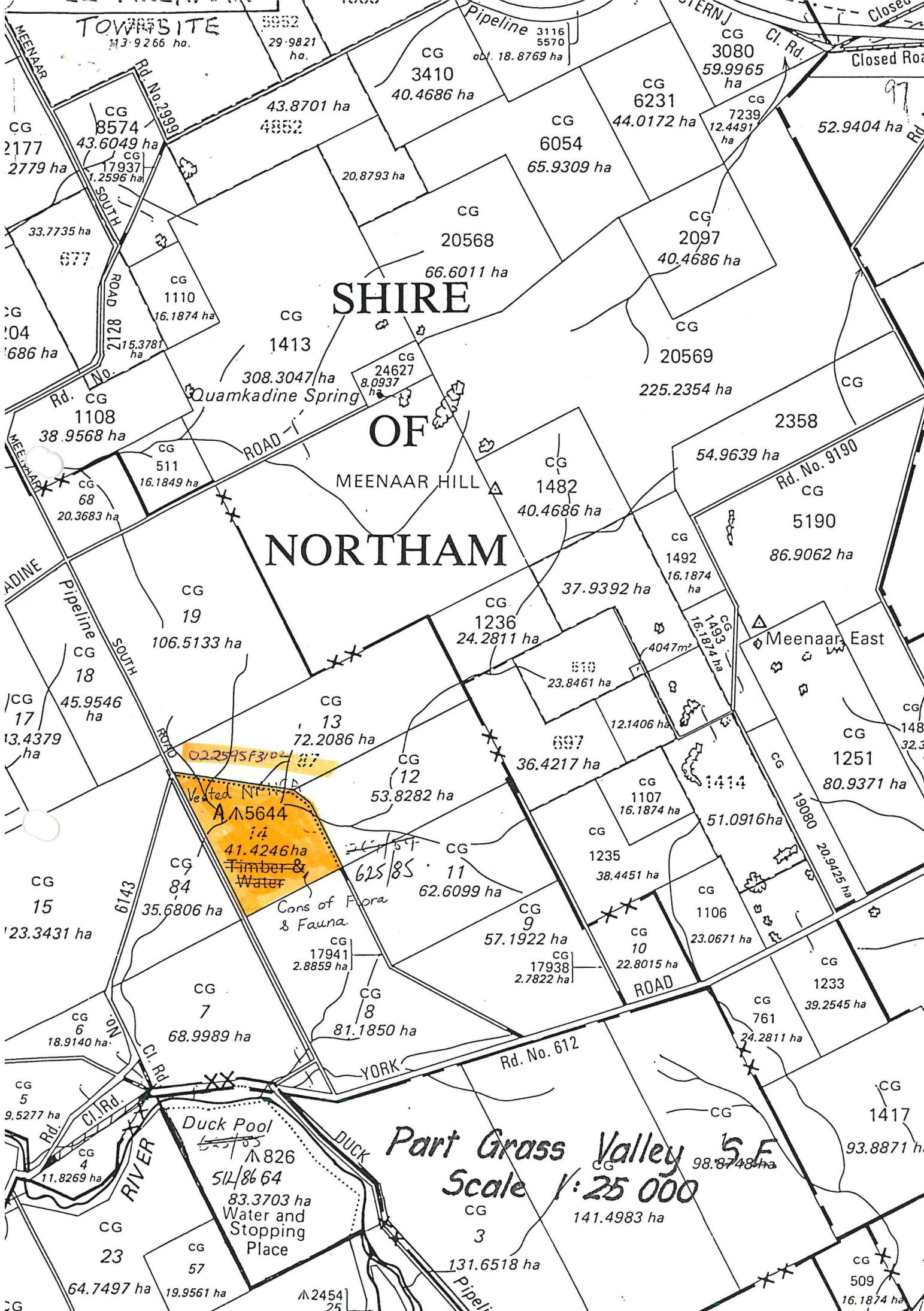
As *Government Gazette* (No. 35) pages 1085 to 1088 contained only a determination of restricted publications and as the issue is not covered by the Annual Subscription it was not issued to subscribers in the usual manner. Copies may be purchased from—

Publication Sales,
Ground Floor, Alexander Library Building,
Perth Cultural Centre.

11 April 1989.

GARRY L. DUFFIELD,
Government Printer.

1/118
2. Lands
26/4/89



SHIRE OF MEENAAR HILL NORTHAM

022545F3104
 Vested NPWA
A 15644
 41.4246 ha
 Timber & Water

Part Grass Valley S.F.
 Scale 1:25 000

TOWN SITE 13-9266 ha.
 5952 29-9821 ha.
 Pipeline 3116 5570 obt. 18.8769 ha
 CG 3410 40.4686 ha
 CG 3080 59.9965 ha
 CG 6231 44.0172 ha
 CG 7239 12.4491 ha
 CG 8574 43.6049 ha
 CG 17937 1.2596 ha
 CG 2177 2779 ha
 CG 6054 65.9309 ha
 CG 2097 40.4686 ha
 CG 20568 66.6011 ha
 CG 20569 225.2354 ha
 CG 2358 54.9639 ha
 CG 5190 86.9062 ha
 CG 1482 40.4686 ha
 CG 1492 16.1874 ha
 CG 1481 32.3 ha
 CG 1251 80.9371 ha
 CG 19 106.5133 ha
 CG 1236 24.2811 ha
 CG 1493 16.1874 ha
 CG 1494 16.1874 ha
 CG 1414 51.0916 ha
 CG 1488 32.3 ha
 CG 1235 38.4451 ha
 CG 1106 23.0671 ha
 CG 1233 39.2545 ha
 CG 13 72.2086 ha
 CG 12 53.8282 ha
 CG 11 62.6099 ha
 CG 9 57.1922 ha
 CG 10 22.8015 ha
 CG 84 35.6806 ha
 CG 7 68.9989 ha
 CG 8 81.1850 ha
 CG 6 18.9140 ha
 CG 5 9.5277 ha
 CG 4 11.8269 ha
 CG 23 64.7497 ha
 CG 57 19.9561 ha
 CG 3 141.4983 ha
 CG 15 23.3431 ha
 CG 17 13.4379 ha
 CG 18 45.9546 ha
 CG 68 20.3683 ha
 CG 511 16.1849 ha
 CG 1108 38.9568 ha
 CG 510 23.8461 ha
 CG 697 36.4217 ha
 CG 1107 16.1874 ha
 CG 1106 23.0671 ha
 CG 761 24.2811 ha
 CG 1417 93.8871 ha
 CG 509 16.1874 ha
 CG 25 131.6518 ha
 CG 826 83.3703 ha
 CG 514/86/64 83.3703 ha
 CG 2454 19.9561 ha

W267/84 RP:SE
3718/98 CN:LI
3231278

EXECUTIVE DIRECTOR
DEPARTMENT OF CONSERVATION AND
LAND MANAGEMENT

RESERVE 5644 TIMBER AND WATER

Further to your memo of January 8, 1986 I advise for your information that Executive Council has approved of the purpose of Reserve No. 5644 (Throssell Estate Lots 14 and 87) being changed from "Timber and Water" to "Conservation of Flora and Fauna" and issued an Order in Council directing that Reserve No. 5644 shall vest in and be held by the National Parks and Nature Conservation Authority in trust for the purpose of "Conservation of Flora and Fauna".

Notice to this effect will be published in the Government Gazette of 24 January 1986 and I enclose a print showing the said reserve and the relevant Vesting Order.

UNDER SECRETARY FOR LANDS

21 January 1986

enc

JLB 8/1/86
decd

158
87

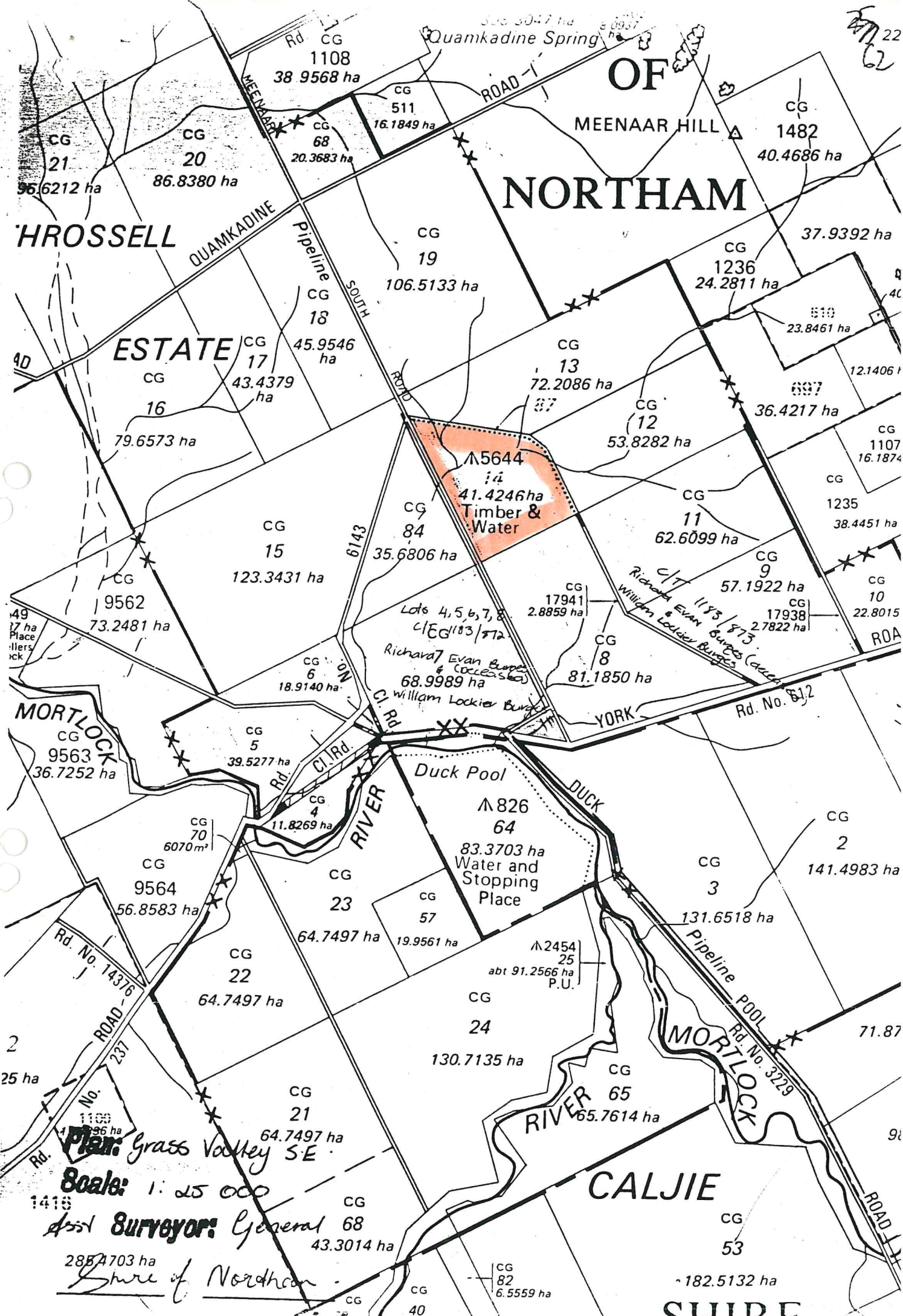
NORTHAM

HROSSELL

MEENAAR HILL

CALJIE

SHIRE



Plan: Grass Valley S.E.

Scale: 1:25 000

Asst Surveyor: General 68

Share of Northam

49
17 ha
Place
Hlers
ck

25 ha

1418

2854703 ha

22
62

4C

4

4C

ROAD

CG

CG

71.87

98

CG

ROAD