

RESERVE ACTION SHEET - CONSERVATION RESERVES

RESERVE No. 12657

REASON FOR ACTION

- Change of purpose of reserve 12657 from 'Water' to 'Conservation of Flora and Fauna' with a Management Order issued to the NPNCA (previously vested in the Minister for Water Resources).
- The addition of reserve 20314, part reserve 7542, the adjoining unallocated Crown land and discontinued railway to reserve 12657. Area: 76.1 hectares.
- The reserve exhibits high values for nature conservation.
- Date of DOLA's advice: 30 March 2000 See folio: 55
- Plans at folios: 60-63

	OFFICER	ACTION
1	CONSERVATION ESTATE OFFICER	- Fill in above details _____ - Attach copies of DOLA's advice to file _____ Send copies of advice & maps to: - Lisa Wright, Woodvale _____ - District Manager, Geraldton _____ - Regional Manager, Geraldton _____ Rec. IUCN classification: _____ 1a
To note:		
2	INDEX CLERK, RECORDS	Index reserve's name _____ Index reserve's number _____
3	LAND ACQUISITIONS OFFICER	To note:
4	MANAGER, PLANNING & VISITOR SERVICES	To note & approve IUCN classification:
5	DIRECTOR, NATURE CONSERVATION/ NATIONAL PARKS	To note:
6	PROGRAM LEADER (TENURE)	To note & update IUCN records:

**Customer Advices for Reserve Actions
1/03/2000 - 31/03/2000**







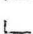
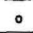

Shire of Northampton 1/03/2000 - 31/03/2000

Reserve No.	Land Description	DOLA File No.	Volume/Folio	Action	Document No.	Lodge Date	Treat Name	Area	Public Plans
12657	Victoria Locallion 12131 Victoria Locallion 12132 Victoria Locallion 12090	02015-1989-01RO	3108-994	Change of Purpose to "Conservation of Flora and Fauna"	H404241	30/03/2000		76.1168 Ha	Hutt SE (25)
12657	Victoria Locallion 4549 on Land Administration Plan Victoria 945.	02015-1989-01RO	3073-141	Amendment of Reserve to To comprise Victoria Locallion 12090 on Land Administration Plan 19165 and Victoria Locations 12131 and 12132 on Plan 19433 In lieu of Locallion 4549 and of its area being increased to 76.1168 heclares.	H404239	30/03/2000		76.1168 Ha	Hutt SE (25)
12657		02015-1989-01RO	3073-141	Revocation of Management Order (the Hon.the Minister for Water Supply, Sewerage and Drainage) for the designatd purpose of "Water".	H404238	30/03/2000		24.8599 Ha	Hutt SE (25)
20314	Victoria District	02803-1929-01RO	0000-00	Reserve Cancellation "Recreation"	H404236	30/03/2000		4.0469 Ha	Hutt SE (25)
7542	Victoria Locallion 5972 on Land Administration Diagram Geraldton 908.	02484-1912-01RO	3073-278	Reserve Cancellatlon "Water"	H404235	30/03/2000		12.4709 Ha	Hutt SE (25)
7542		02484-1912-01RO	3073-278	Revocation of Management Order (the Hon. Minister for Water Supply, Sewerage and Drainage) for the designatd purpose of "Water".	H404243	30/03/2000		12.4709 Ha	Hutt SE (25)

CALM-MANAGED LANDS AND WATERS

AS AT 30th JUNE 1999

Legend

-  National Park
-  Conservation Park
-  Nature Reserve
-  State Forest, Timber Reserve, Freehold & Other Reserve
-  Section 5(g) Reserve
-  Leasehold in the name of the Executive Director
-  Marine Park / Marine Nat Res / Marine Management Area
-  CALM Region Boundary
-  CALM Regional Office

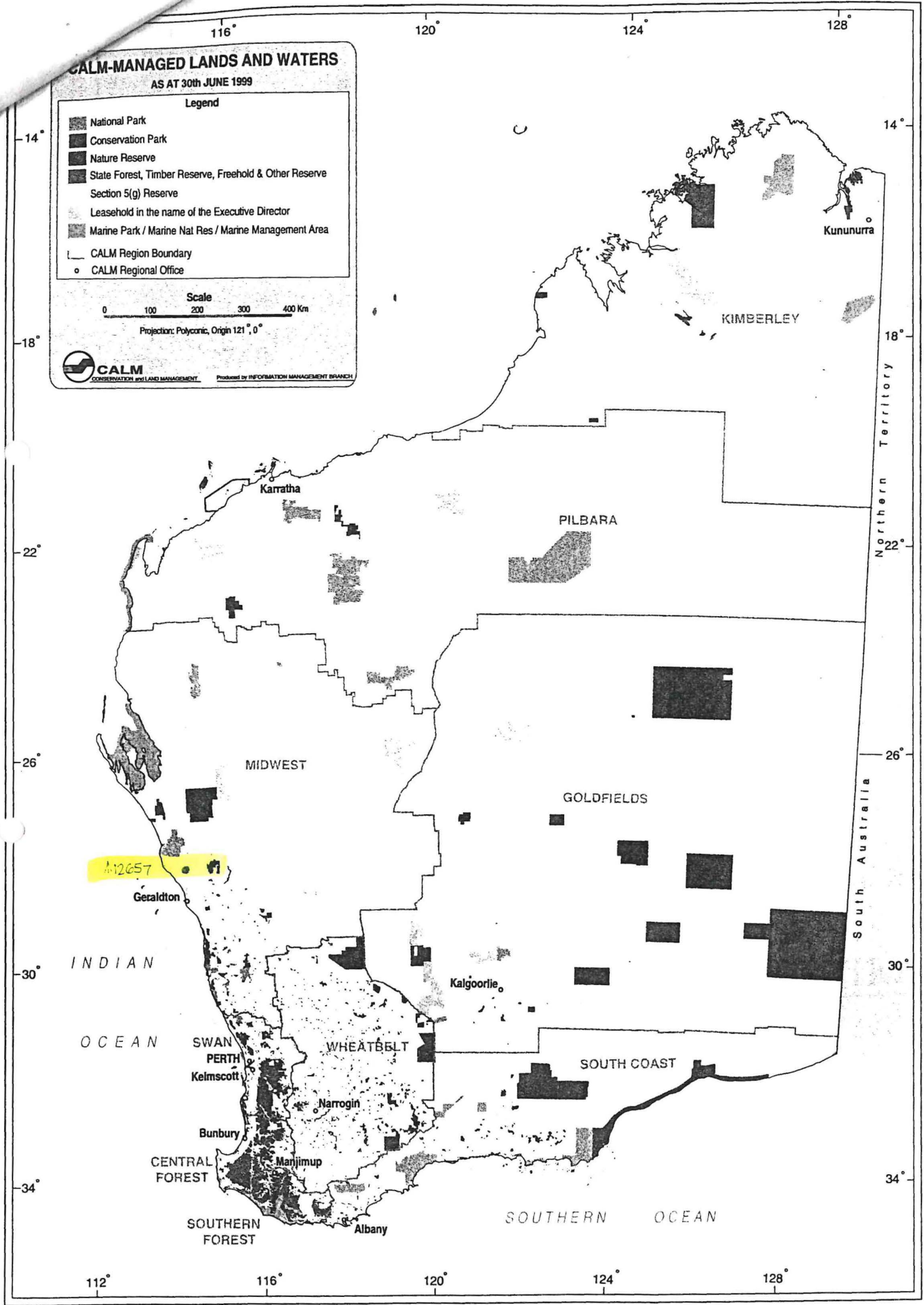
Scale
0 100 200 300 400 Km

Projection: Polyconic, Origin 121°, 0°



CALM
CONSERVATION and LAND MANAGEMENT

Produced by INFORMATION MANAGEMENT BRANCH



9785

335.9369 ha

Mundenwerrinoo Spring

CG
2820
101.1714 ha
MARTIN ROAD
569.1317 ha
(1040-9678 ha)

CG
7532
64.7497 ha

9786

471-8361 ha

CG
OGILVIE ROAD
2743
785.6542 ha
ROAD No

▲ 17315
4.0469 ha
Recreation and Hall Site

▲ 30683
11070
abt 4250 m²
Goods Storage Depot

WEST

10989
abt 2.0900 ha

▲ 7542
5972
12.4709 ha
Water
Vested Min. Wat. Res.

CG
10923
164 m²

OGILVIE ROAD

Road
CG
7494
64.7497 ha

Rd No. 4521

12090
(3-3936 ha)

12132
(20-5161 ha)

▲ 12657
Vested NPNC
76-1168 ha
Cons of Flora & Fauna

CG
5931
134.5782 ha

CG
4550
305.7781 ha

CG
6627
64.7497 ha

4
333.1

880

Road No 4522

Vested Shire of Northampton
▲ 25273
11896
15-2513 ha
Gravel

CG
11146
30.0033 ha

CG
10521
40.87

CG
6880

CG
6881

CG
6231
1113.2219 ha

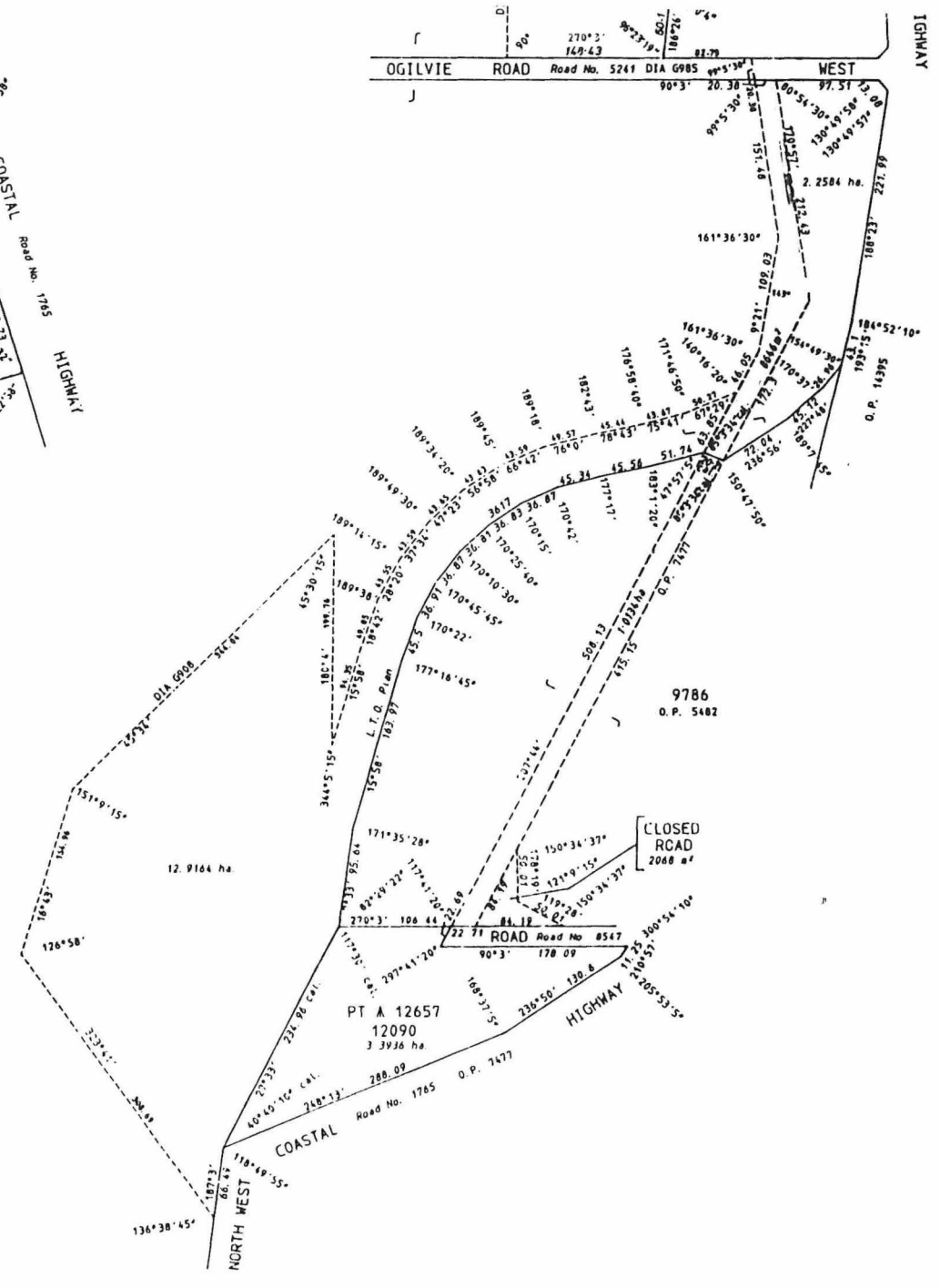
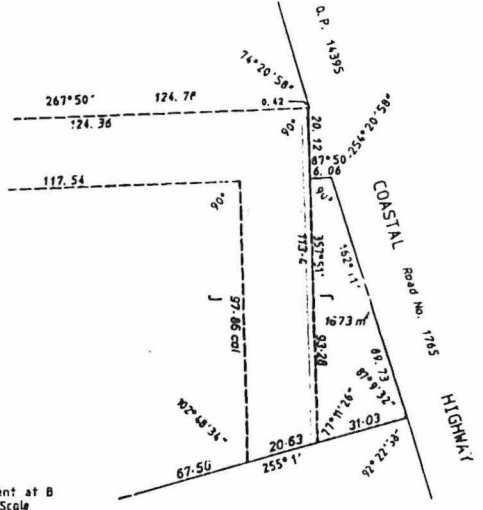
CG
10040

CG
10079
110.3318 ha

SHIRE

FAG DOLA PLAN
HUTT SE. (1841-IV-SE)
SCALE 1:25000

ROAD CLOSED (Bounded blue) GAZ 348/97/257D

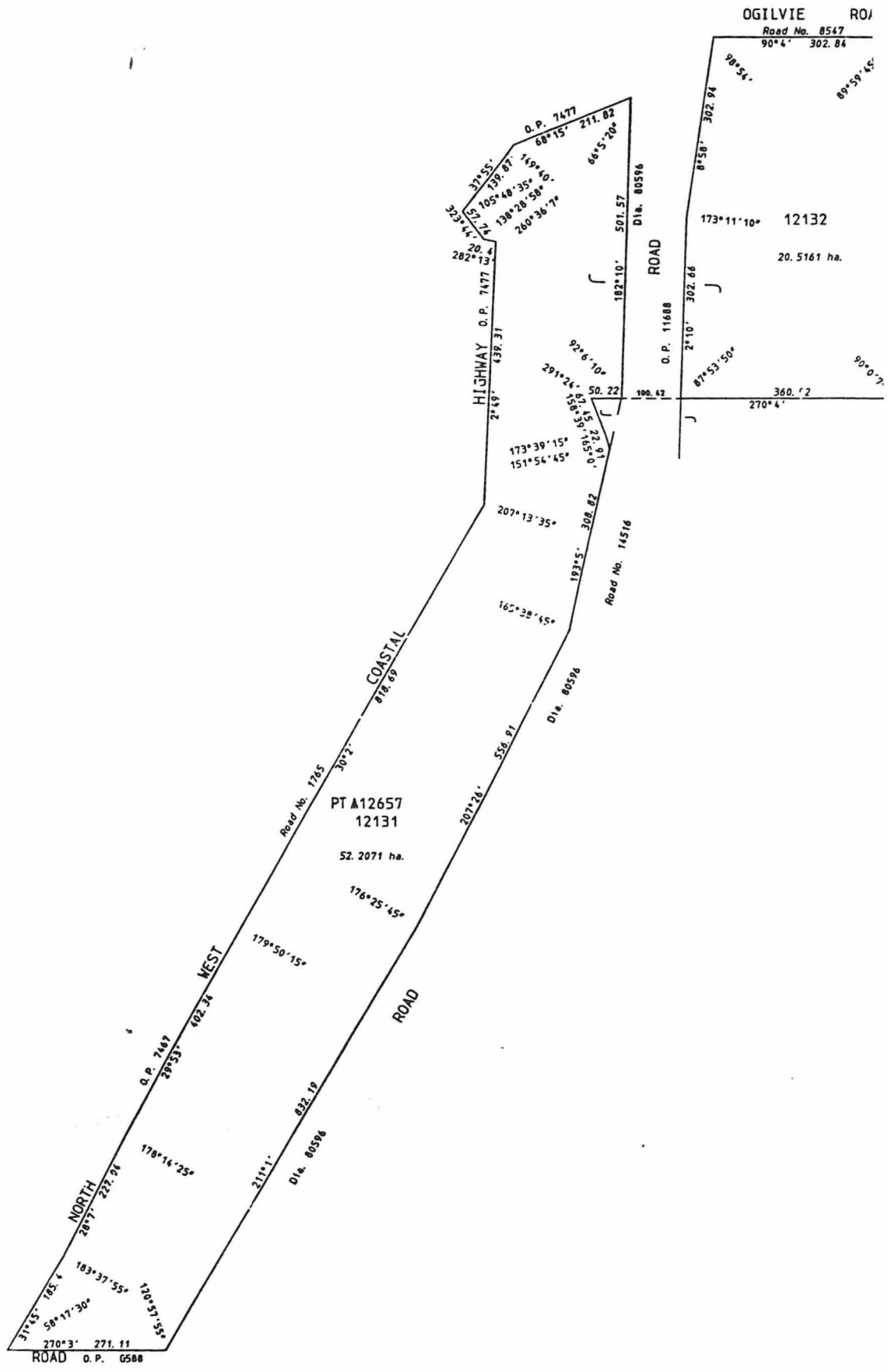


HIGHWAY

1

OGILVIE ROJ

Road No. 8547
90°4' 302.84



K
P

JA
BE
yD
IB