

RESERVE ACTION SHEET - CONSERVATION RESERVES

RESERVE No. 14459

REASON FOR ACTION

- Change of purpose of Reserve (↑14459) from "Timber" to "Conservation of Flora and Fauna" with a Management Order issued to the Conservation Commission (previously unvested).
- Area: 440.41 hectares.
- Reserve 14459 is of high value to nature conservation and its new purpose, "Conservation of Flora and Fauna", will enable it to be managed to maintain its conservation value.
- Date of DOLA's advice: 19 May 2000 See folio: 65
- Plans at folios: 62, 63, 64, 65 & 66.

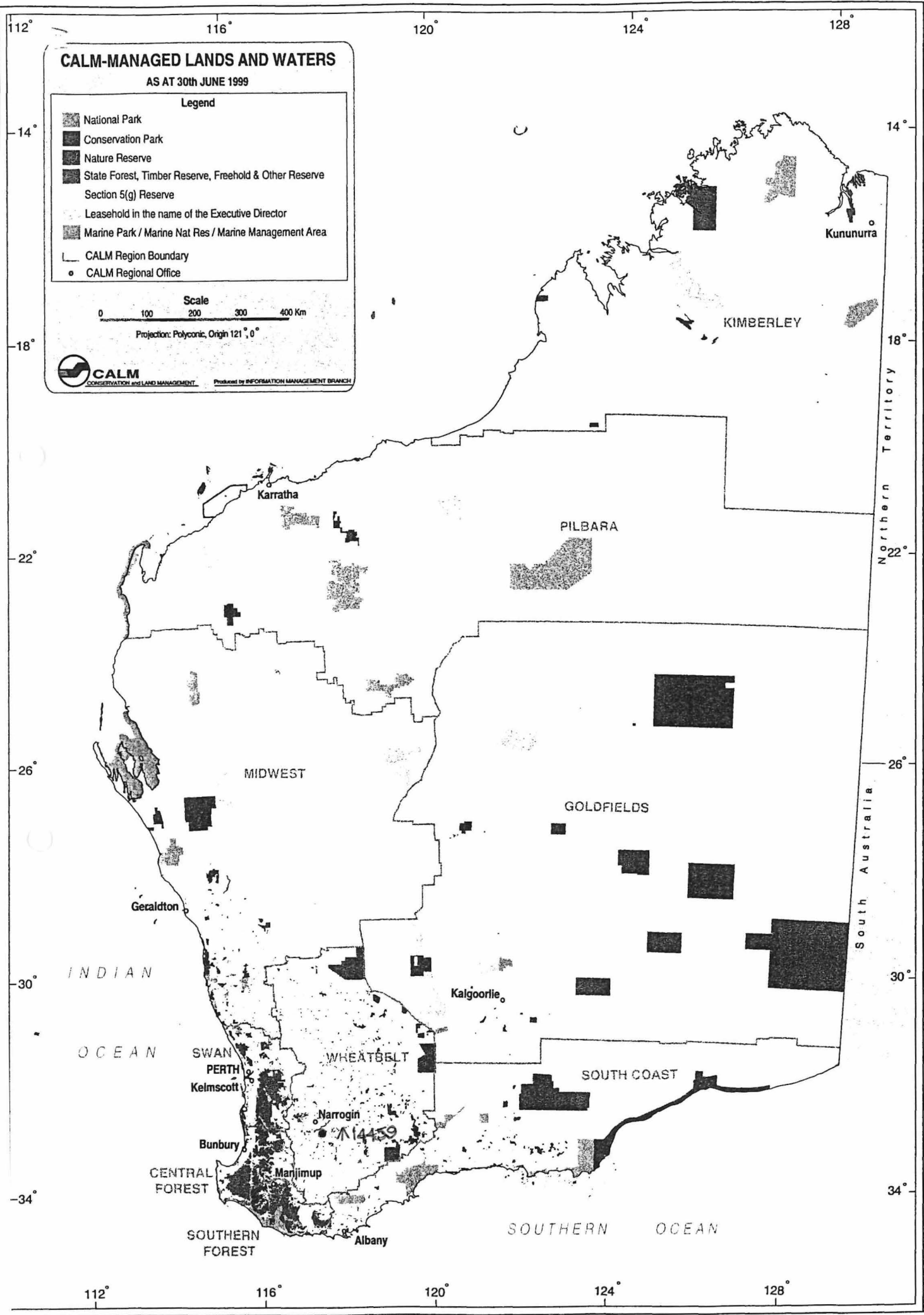
OFFICER	ACTION	
1	<div style="text-align: right; margin-right: 20px;"><i>NW</i></div> CONSERVATION ESTATE OFFICER	<ul style="list-style-type: none"> - Fill in above details ✓ - Attach copies of DOLA's advice to file ✓ <p>Send copies of advice & maps to:</p> <ul style="list-style-type: none"> - Lisa Wright, Woodvale ✓ - District Manager, Narrogin _____ - Regional Manager, Narrogin _____ <p>IUCN classification: 1a</p> <p>To note: <i>N. Wilters</i> 8-12-00</p>
2	INDEX CLERK, RECORDS	To note: _____
3	LAND ACQUISITIONS OFFICER	To note: _____
4	MANAGER, PLANNING & VISITOR SERVICES	To note: _____
5	DIRECTOR, NATURE CONSERVATION/ NATIONAL PARKS	To note: _____

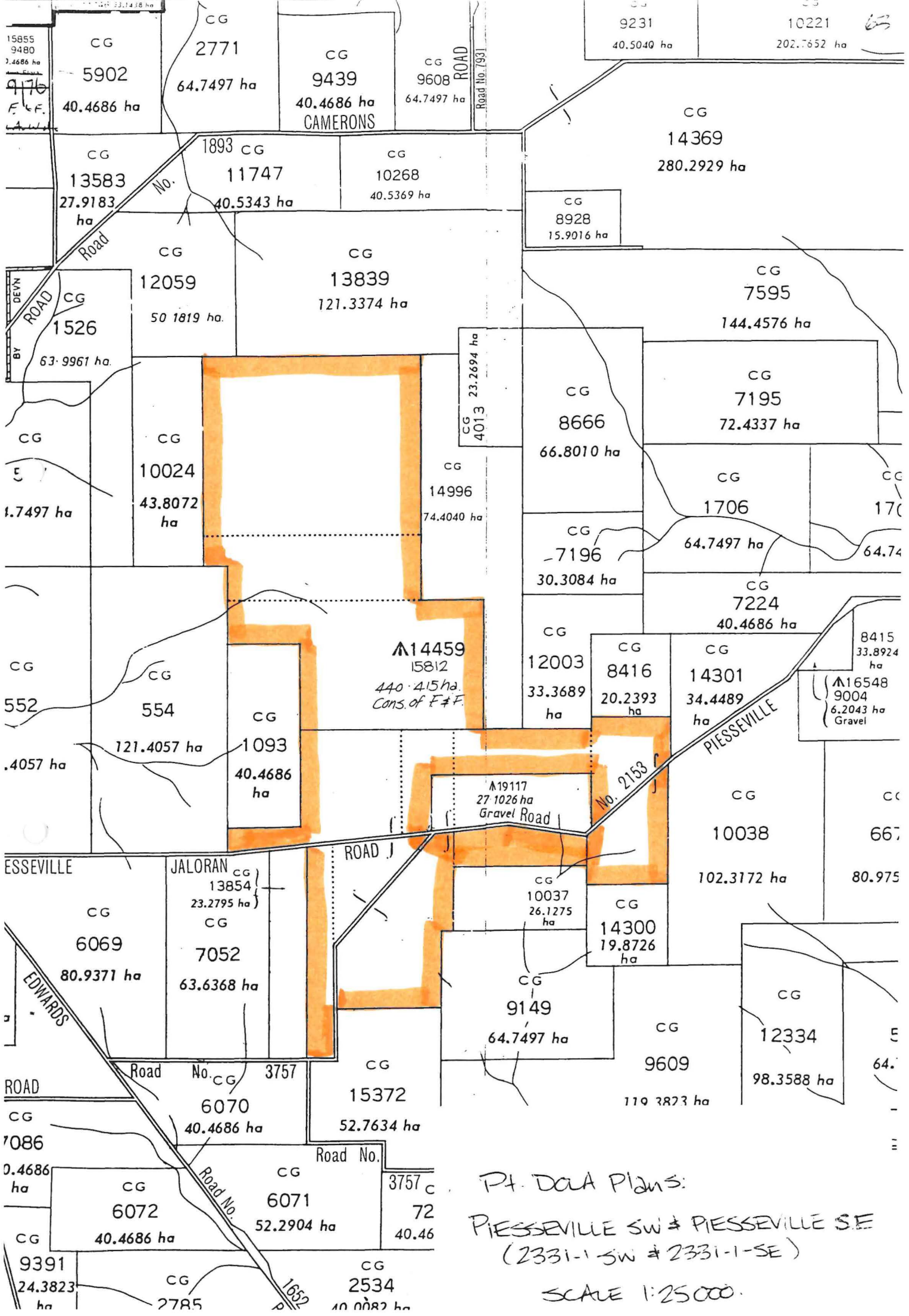
Customer Advice

Customer Advices for Reserve Actions 2/05/2000 - 24/05/2000

Shire of Wagin 2/05/2000 - 24/05/2000

Reserve No.	Land Description	DOLA File No.	Volume/Folio	Action	Document No.	Lodge Date	Street Name	Area	Public Plans
14459	Williams Location 15812 on Land Administration Plan 18458	01287-1960-01RD	3096-487	Amendment of Reserve to To comprise Williams Location 15812 (in lieu of Williams Locations 10025, 13479 and 9429) on Land Administration Plan 18458 and of its area increased to 440.4150 hectares accordingly	H449297	19/05/2000	Piesseville Jaloran Road	440.415 Ha	Piesseville SE and SW (25)
14459	Williams Location 15812 on Land Administration Plan 18458	01287-1960-01RD	3096-487	Change of Purpose to "Conservation of Flora and Fauna"	H449298	19/05/2000	Piesseville Jaloran Road	440.415 Ha	Piesseville SE and SW (25)
16561	Williams Location 9014 on Land Administration Diagram 41377		3084-126	Reserve Cancellation "Quarry Gravel"	H449295	19/05/2000	Piesseville-Jaloran Road	14.0831 Ha	Piesseville SE and SW (25)
19117	Williams Location 15811 on Land Administration Plan 18458	01287-1960-01RD	3096-486	Amendment of Reserve to To comprise Williams Location 15811 (in lieu of Williams Locations 14192, 14193, 10042, 10733, 10189 and 9329) on Land Administration Plan 18458, and of its area being reduced to 27.1026 hectares accordingly	H449292	19/05/2000	Piesseville Jaloran Road	27.1026 Ha	Piesseville SE and SW (25)
19117	Williams Location 15811 on Land Administration Plan 18458	01287-1960-01RD	3096-486	Change of Purpose to "Gravel"	H449293	19/05/2000	Piesseville Jaloran Road	27.1026 Ha	Piesseville SE and SW (25)
19117		01287-1960-01RD	3096-486	Management Order to Shire of Wagin 2 Arthur Road WAGIN WA 6315 To be utilised for the designated purpose of Gravel only for the designated purpose of "Gravel"	H449294	19/05/2000	Piesseville Jaloran Road	27.1026 Ha	Piesseville SE and SW (25)





Pt. DOLA Plans:
 PIESSEVILLE SW & PIESSEVILLE SE
 (2331-1-SW & 2331-1-SE)
 SCALE 1:25000.