

NATURE RESERVE

RESERVE NO: "A" 25039

GOVERNMENT GAZETTE
Date Page No.

FILE NUMBER: 1099/76

PURPOSE: Conservation of Flora and Fauna 13. 3.81 1495

NAME: Emu Hill 16/11/84 3698

CLASS (Land Act): "A" 11.7.58 1483

AREA: 89.0308 ha 11.7.58 1495

VESTING: WAWA 13.3.81 1981

LOCATION NO(S): Emu Hill 1,2,3,4,5,6,7,8,9,
10,11,12,13,14,16,17,19 to 63,66,67,
71,72,73.

CLASSIFICATION:
(Wildlife Act
Section 12A)

LITHO: T.S. of Emu Hill 345/80 B1

LOCAL AUTHORITY: NARAMBEEN SHIRE

Notes:

18606F 3102

RESERVE ACT 1996
(NO 32 OF 1996)

DEPARTMENT OF CONSERVATION
AND LAND MANAGEMENT

25 October 1996]

GOVERNMENT GAZETTE, WA

4 NOV 5 1996

13388, 13389, 13390, 13391, 13392, 13393, 13394, 13395, 13396, 13397, 13398, 13399, 13400, 13401, 13402, 13403, 13404, 13405, 13406, 13407, 13408, 13409, 13410, 13411, 13412, 13413, 13414, 13415, 13416, 13417, 13418, 13420, 13421, 13422, 13423, 13424, 13425, 13426, 13427, 13428, 13432, 13463 and 13481 as shown bordered red on Reserve Plan 367 (Sheets 1 to 6 inclusive) and Miscellaneous Diagrams 309, 316 and 525 and its area be established at about 115447 hectares.

DOLA File: 604/978

- 7. (i) Class 'C' Reserve 43182 (Canning Location 3893) "Conservation of Flora and Fauna" is cancelled.
- (ii) Class 'A' Reserve 23076 (Canning Location 3766) "Conservation of Flora and Fauna" is amended by the inclusion of Locations 3893 and 4107 (formerly Lot 35 on Plan 4742) and its area being increased to 21.9901 hectares.
Public Plans: BG34(2) 23.21, 24.21 and 24.22
DOLA File: 1930/950.
- 8. (i) Class 'A' Reserve 34772 (Meenaar Lot 71) "Conservation of Flora and Fauna" is cancelled.
- (ii) Class 'A' Reserve 29977 (Avon Location 28608) "Conservation of Flora and Fauna" is amended by the inclusion of Meenaar Lot 71 and its area being increased to 94.1208 hectares.
Public Plans: Meenaar Townsite
DOLA File: 3592/968
- 9. (i) Class 'C' Reserve 18625 (Bowgada Lot 52) "School Site" is cancelled.
- (ii) Class 'A' Reserve 29745 (Bowgada Lot 59) "Conservation of Flora and Fauna" is amended by the inclusion of Lot 52 and its area being increased to 152.2472 hectares.
Public Plan: BG41 (2) 30.35
DOLA File: 2046/969
- 10. Class 'A' Reserve 15162 (Plantagenet District) "Parklands" is amended by:-
 - (a) the excision of that area now contained in Location 7761.
 - (b) redescribing the reserve to comprise Plantagenet Location 6923 on Land Administration Plan 18597 and of its area being reduced to 58.0970 hectares.
Public Plans: Mount Barker (25) SE and BJ27(10) 8.2
DOLA File: 8777/913
- 11. Class 'A' Reserve 18325 (Swan Locations 3301, 3762, 5563, 7727 and 7583) "Recreation" is amended by the excision of the area now comprised on Location 11985 and its area being reduced to 161.5586 hectares.
Public Plans: BG34(2) 14.28 and 14.29
DOLA File: 5192/896 V7
- 12. Class 'A' Reserve 25039 (Emu Hill Lots 1 to 14 inclusive, 16, 17, 19 to 63 inclusive, 66, 67, 71, 72 and 73) "Conservation of Flora and Fauna" is amended by—
 - (a) the inclusion of Lot 74 (formerly Lot 15 on Plan 1711),
 - (b) by recalculation of its area so that the reserve comprises 61.7839 hectares.
Public Plan: Emu Hill Townsite
DOLA File: 2318/993
- 13. Class 'A' Reserve 39962 (Hamersley Lots 16 and 17, North Beach Lots 709 and 710 and Waterman Lots 4 and 6) "Conservation of Flora and Fauna, and Passive Recreation" is amended by the inclusion of North Beach Lot 715 and its area being increased to 95.9144 hectares.
Public Plan: BG34(2) 7.35
DOLA File: 3129/977 V4
- 14. (i) Class 'A' Reserve 35291 (Avon Location 28572) "Conservation of Flora and Fauna" is cancelled.
- (ii) Class 'A' Reserve 33254 (Avon Location 29024) "Conservation of Flora and Fauna" is amended by the inclusion of Location 28572 and its area being increased to 14.1015 hectares.
Public Plans: Northam (25) SW and Toodyay (25) SE
DOLA File: 544/972
- 15. Class 'A' Reserve 38924 (Avon Locations 28805 and 28937) "Conservation of Flora and Fauna" is amended by the inclusion of Location 29096 on Diagram 91497 and its area being increased to 931.7567 hectares.
Public Plan: Toodyay (25) SW, BG35(10) 8.3 and 8.4
DOLA File: 911/984 V2
- 16. (i) Class 'A' Reserve 34606 (Milyuga Location 13) "Conservation of Flora and Fauna" is amended by the excision of that area now comprised in Milyuga Location 14 on Reserve Diagram 1303 and of its area being reduced to about 1,842,864 hectares.
Public Plan: Rawlinson 1:500,000
DOLA File: 1687/976
- (ii) Class 'A' Reserve 29452 (Milyuga District) "Use and Benefit of Aboriginal Inhabitants" is amended to comprise Milyuga Location 14 on Reserve Diagram 1303 and of its area being increased to about 20,566 hectares.
Public Plan: Rawlinson 1:500,000
DOLA File: 1397/968

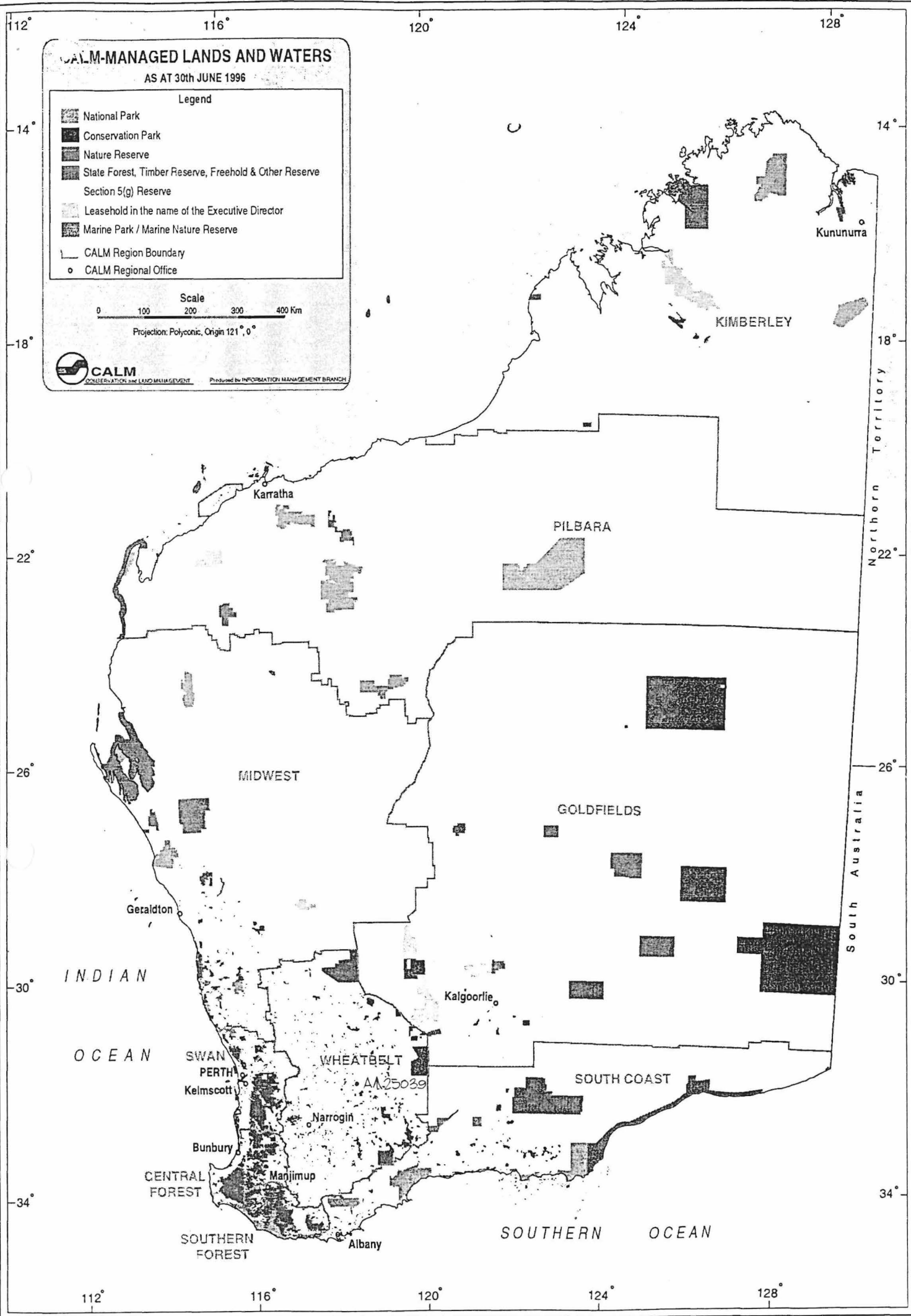
October 18, 1996.

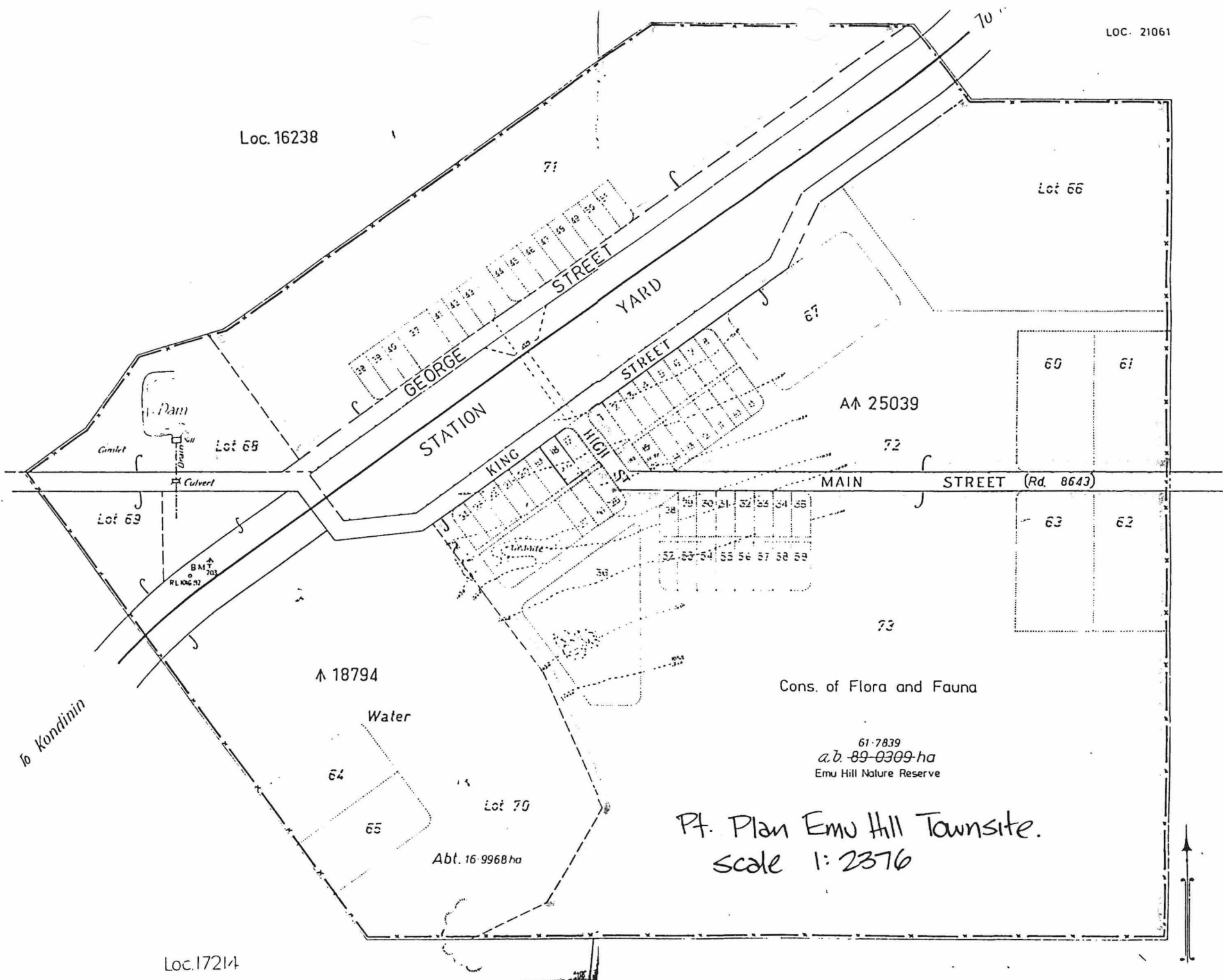
TO THE CLERK WOODVARE
FOR YOUR INFORMATION

A. A. SKINNER, Chief Executive.
m. ... for your
lithe ph. ...

6-11-96
1 ...
...

SC 16.12.96





Loc. 16238

LOC. 21061

Lot 66

71
 GEORGE STREET
 STATION YARD

Dam

Lot 68

STATION

KING STREET

AA 25039

69

61

Lot 69

BM 703
 RL 106.57

KING

HILL STREET

72

MAIN STREET (Rd. 8643)

63

62

73

18794

Water

Cons. of Flora and Fauna

61-7839
 a.b. 89-0309-ha
 Emu Hill Nature Reserve

to Kondinin

64

Lot 70

65

Abt. 16-9968 ha

Pt. Plan Emu Hill Townsite.
 scale 1:2376

Loc. 17214

CLAUSE 13

“Protection of Flora” Reserve 25039 was set aside and proclaimed Class “A” in June 1958. The Reserve comprised Emu Hill Lots 1 to 14 inclusive, 16, 17, 19 to 63 inclusive, 66, 67, 71, 72 and 73 and comprised an area of about 89.0308 hectares. This represented the majority of the land contained within the abandoned Emu Hill Townsite.

Via Clause 4 of Reserves Act Number 95 of 1980 the purpose of Reserve 25039 was amended to “Conservation of Flora and Fauna”. The reserve was vested in the then Western Australian Wildlife Authority in March 1981.

It is now proposed to include vacant Crown Emu Hill Lot 74 (formerly Lot 15) into Reserve 25039 as part of the process to eventually reserve all land within the townsite for the abovementioned purpose. The Lot is coloured dark red on the sketch and comprises an area of 880 square metres.

This proposal has the support of the Shire of Narembeen and Department of Conservation and Land Management. The Department of Minerals and Energy has raised no objection to the inclusion.

As a separate matter improvement in technology and more accurate plan production has enabled the calculations of areas and distances to be more precise. Application of new methods as part of DOLA Tenure Validation Project has resulted in the area of Reserve 25039 being recalculated from about 89.0308 hectares to about 61.6959 hectares, without external boundaries being altered.

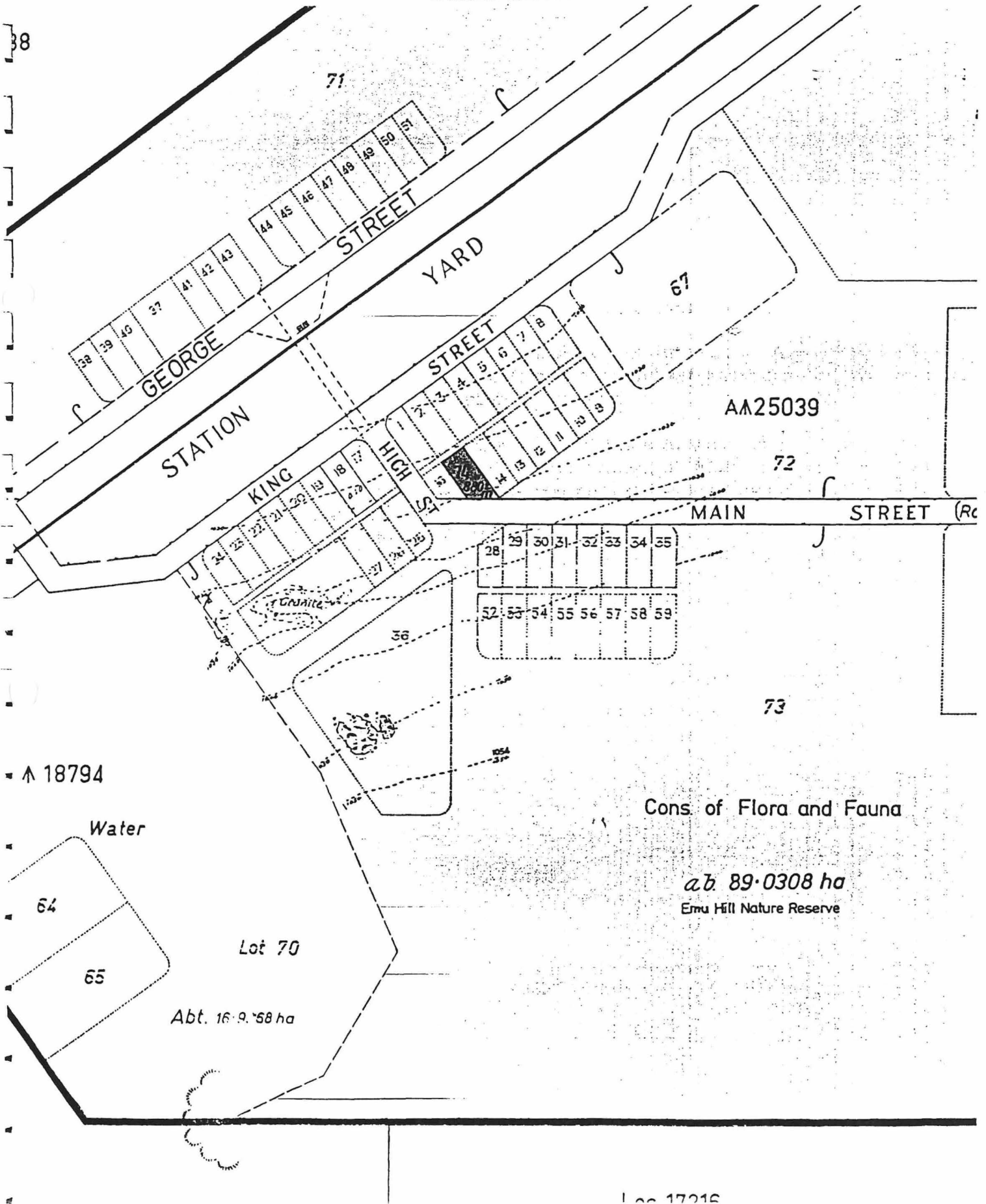
As land can only be added to Class “A” reserves with the approval of both Houses of Parliament, this clause seeks to achieve that action as well as re-establishing (recalculating) the area of reserve.

**Electoral District of Merredin
Agricultural Electoral Region
Shire of Narembeen**



1. INCLUSION OF EMU HILL LOT 74 COLOURED DARK RED INTO CLASS "A" RESERVE 25039.

AVON DISTRICT
PUBLIC PLAN: EMU HILL TOWNSITE (40CH)
Corr. 2318/993
SCALE 1:75000



25 October 1996]

GOVERNMENT GAZETTE, WA

DEPARTMENT OF CONSERVATION
AND MANAGEMENT
4 NOV 5645
1996

RESERVE ACT 1996
(NO 32 OF 1996)

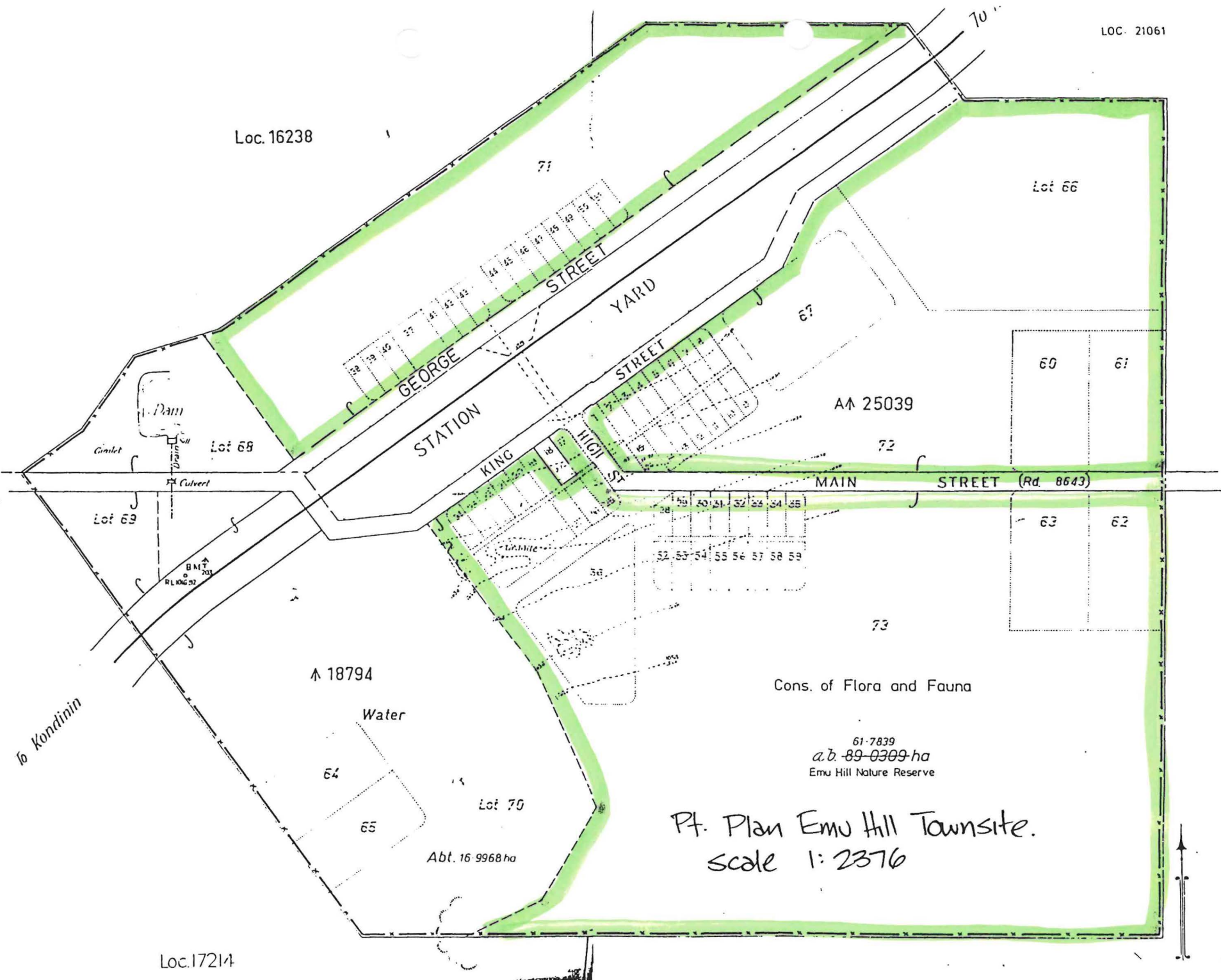
13388, 13389, 13390, 13391, 13392, 13393, 13394, 13395, 13396, 13397, 13398, 13399, 13400, 13401, 13402, 13403, 13404, 13405, 13406, 13407, 13408, 13409, 13410, 13411, 13412, 13413, 13414, 13415, 13416, 13417, 13418, 13420, 13421, 13422, 13423, 13424, 13425, 13426, 13427, 13428, 13432, 13463 and 13481 as shown bordered red on Reserve Plan 367 (Sheets 1 to 6 inclusive) and Miscellaneous Diagrams 309, 316 and 525 and its area be established at about 115447 hectares.

DOLA File: 604/978

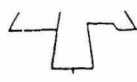
7. (i) Class 'C' Reserve 43182 (Canning Location 3893) "Conservation of Flora and Fauna" is cancelled.
(ii) Class 'A' Reserve 23076 (Canning Location 3766) "Conservation of Flora and Fauna" is amended by the inclusion of Locations 3893 and 4107 (formerly Lot 35 on Plan 4742) and its area being increased to 21.9901 hectares.
Public Plans: BG34(2) 23.21, 24.21 and 24.22
DOLA File: 1930/950.
8. (i) Class 'A' Reserve 34772 (Meenaar Lot 71) "Conservation of Flora and Fauna" is cancelled.
(ii) Class 'A' Reserve 29977 (Avon Location 28608) "Conservation of Flora and Fauna" is amended by the inclusion of Meenaar Lot 71 and its area being increased to 94.1208 hectares.
Public Plans: Meenaar Townsite
DOLA File: 3592/968
9. (i) Class 'C' Reserve 18625 (Bowgada Lot 52) "School Site" is cancelled.
(ii) Class 'A' Reserve 29745 (Bowgada Lot 59) "Conservation of Flora and Fauna" is amended by the inclusion of Lot 52 and its area being increased to 152.2472 hectares.
Public Plan: BG41 (2) 30.35
DOLA File: 2046/969
10. Class 'A' Reserve 15162 (Plantagenet District) "Parklands" is amended by:-
(a) the excision of that area now contained in Location 7761.
(b) redescribing the reserve to comprise Plantagenet Location 6923 on Land Administration Plan 18597 and of its area being reduced to 58.0970 hectares.
Public Plans: Mount Barker (25) SE and BJ27(10) 8.2
DOLA File: 8777/913
11. Class 'A' Reserve 18325 (Swan Locations 3301, 3762, 5563, 7727 and 7583) "Recreation" is amended by the excision of the area now comprised on Location 11985 and its area being reduced to 161.5586 hectares.
Public Plans: BG34(2) 14.28 and 14.29
DOLA File: 5192/896 V7
12. Class 'A' Reserve 25039 (Emu Hill Lots 1 to 14 inclusive, 16, 17, 19 to 63 inclusive, 66, 67, 71, 72 and 73) "Conservation of Flora and Fauna" is amended by—
(a) the inclusion of Lot 74 (formerly Lot 15 on Plan 1711),
(b) by recalculation of its area so that the reserve comprises 61.7839 hectares.
Public Plan: Emu Hill Townsite
DOLA File: 2318/993
13. Class 'A' Reserve 39962 (Hamersley Lots 16 and 17, North Beach Lots 709 and 710 and Waterman Lots 4 and 6) "Conservation of Flora and Fauna, and Passive Recreation" is amended by the inclusion of North Beach Lot 715 and its area being increased to 95.9144 hectares.
Public Plan: BG34(2) 7.35
DOLA File: 3129/977 V4
14. (i) Class 'A' Reserve 35291 (Avon Location 28572) "Conservation of Flora and Fauna" is cancelled.
(ii) Class 'A' Reserve 33254 (Avon Location 29024) "Conservation of Flora and Fauna" is amended by the inclusion of Location 28572 and its area being increased to 14.1015 hectares.
Public Plans: Northam (25) SW and Toodyay (25) SE
DOLA File: 544/972
15. Class 'A' Reserve 38924 (Avon Locations 28805 and 28937) "Conservation of Flora and Fauna" is amended by the inclusion of Location 29096 on Diagram 91497 and its area being increased to 931.7567 hectares.
Public Plan: Toodyay (25) SW, BG35(10) 8.3 and 8.4
DOLA File: 911/984 V2
16. (i) Class 'A' Reserve 34606 (Milyuga Location 13) "Conservation of Flora and Fauna" is amended by the excision of that area now comprised in Milyuga Location 14 on Reserve Diagram 1303 and of its area being reduced to about 1,842,864 hectares.
Public Plan: Rawlinson 1:500,000
DOLA File: 1687/976
(ii) Class 'A' Reserve 29452 (Milyuga District) "Use and Benefit of Aboriginal Inhabitants" is amended to comprise Milyuga Location 14 on Reserve Diagram 1303 and of its area being increased to about 20,566 hectares.
Public Plan: Rawlinson 1:500,000
DOLA File: 1397/968

October 18, 1996.

6-11-96 MRR
1. Filed 2. A. Skinner
A. A. SKINNER, Chief Executive.
Ms. Collins - for your
litho etc.
129

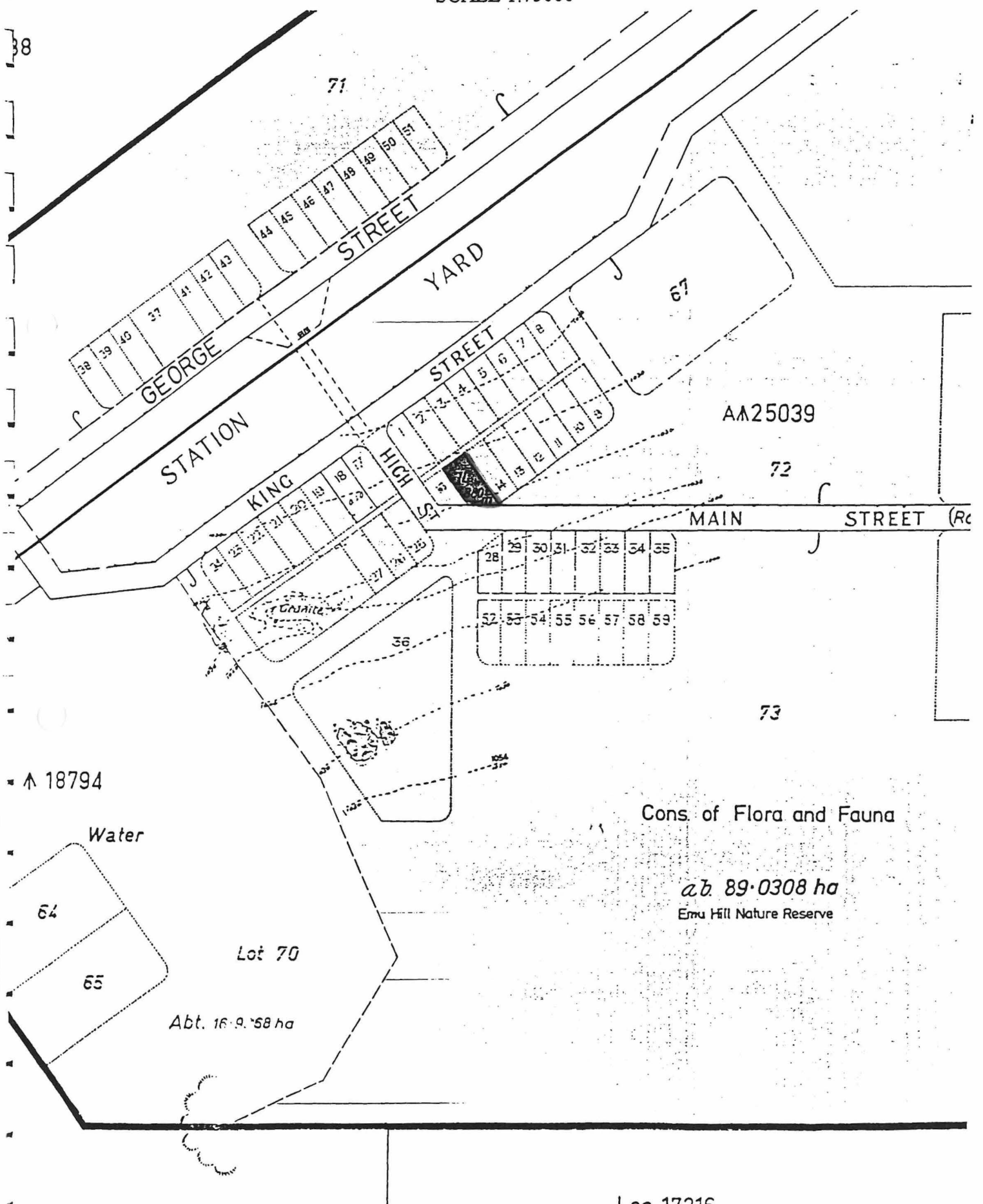


57
58



1. INCLUSION OF EMU HILL LOT 74 COLOURED DARK RED INTO CLASS "A" RESERVE 25039.

AVON DISTRICT
 PUBLIC PLAN: EMU HILL TOWNSITE (40CH)
 Corr. 2318/993
 SCALE 1:75000



CLAUSE 13

“Protection of Flora” Reserve 25039 was set aside and proclaimed Class “A” in June 1958. The Reserve comprised Emu Hill Lots 1 to 14 inclusive, 16, 17, 19 to 63 inclusive, 66, 67, 71, 72 and 73 and comprised an area of about 89.0308 hectares. This represented the majority of the land contained within the abandoned Emu Hill Townsite.

Via Clause 4 of Reserves Act Number 95 of 1980 the purpose of Reserve 25039 was amended to “Conservation of Flora and Fauna”. The reserve was vested in the then Western Australian Wildlife Authority in March 1981.

It is now proposed to include vacant Crown Emu Hill Lot 74 (formerly Lot 15) into Reserve 25039 as part of the process to eventually reserve all land within the townsite for the abovementioned purpose. The Lot is coloured dark red on the sketch and comprises an area of 880 square metres.

This proposal has the support of the Shire of Narembeen and Department of Conservation and Land Management. The Department of Minerals and Energy has raised no objection to the inclusion.

As a separate matter improvement in technology and more accurate plan production has enabled the calculations of areas and distances to be more precise. Application of new methods as part of DOLA Tenure Validation Project has resulted in the area of Reserve 25039 being recalculated from about 89.0308 hectares to about 61.6959 hectares, without external boundaries being altered.

As land can only be added to Class “A” reserves with the approval of both Houses of Parliament, this clause seeks to achieve that action as well as re-establishing (recalculating) the area of reserve.

**Electoral District of Merredin
Agricultural Electoral Region
Shire of Narembeen**

CLAUSE 13

Reserve No. 25039 (Emu Hill Nature Reserve) in the Shire of Narembeen

13. Reserve No. 25039, classified as of Class A, formerly described as comprising 89.030 8 hectares or thereabouts but found on recalculation to comprise 61.695 9 hectares or thereabouts, set apart for "Conservation of Flora and Fauna" and vested in the Authority, is amended by including an area of 880 square metres, being Emu Hill Lot 74 (formerly Lot 15 on Plan No. 1711) so that the reserve comprises 61.783 9 hectares or thereabouts.