

50

RESERVE No: 30082

REASON FOR ACTION: (1) Implementation of land exchange arrangements negotiated with Juna Downs and Mulga Downs stations (2) Purpose changed from "National Park - Dales Gorge" to just "National Park" (3) Recalculation of area of park to 606 597 ha. (4) Renamed 'Karijini National Park' (2020)

OFFICER ACTION ACTION DATE

1. ~~LANDS CLERK~~ ^{MR} Fill in above details ✓
2. ~~S.C. RESERVES CLERK~~

^{NR}
13.3.92. Attach copies of gazettal notices to file (folios: 306-309) ✓

Enter relevant details on file cover. ✓

3. ~~OFFICER IN CHARGE - RECORDS - INDEX CLERK~~ For new reserves: Index Reserve's name
emessenger 13/3/92 Index Reserve's number

4. ~~SENIOR DRAFTSPERSON LEGAL MAPPING~~ Amend Litho
NR
27/3/92 Attach copy of litho to file (mark litho name/number) Done see FILE 13 now DT 04

5. ~~LANDS CLERK~~ Send copies of gazettal notices (or Lands Department memo) and map to:
SEB
14.4.92 Clerk Woodvale _____
Regional Manager _____
OIC Inventory, Kelmscott/Bunbury/Manjimup _____
District Manager _____
District Wildlife Officer _____

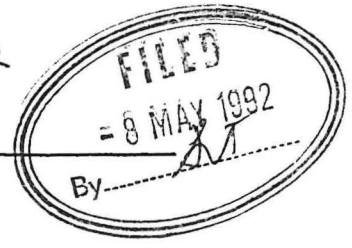
Note: Information sent must include:
(a) Department's file number
(b) Litho number/name

6. ~~SENIOR CLERK RESERVES~~ To Note NR 15.4.92

7. ~~MANAGER, LAND ADMIN~~ To Note 16/4

15.92
8. Alan Padgett - Planning Branch to note
8.A ~~DIRECTOR NATURE CONSERVATION/NATIONAL PARKS~~ To Note AP 4/5/92

~~7. Reserves Clerk - p. 25~~ B27/5



Notice to this effect was assented in Parliament of Western Australia dated December 17 1991 and I enclose a print showing the said reserve.

O

enc R. PUMPHREY
A/MANAGER
ACQUISITIONS, ROADS AND RESERVES
LAND OPERATIONS DIVISION

February 20, 1992

Enc

02NMLP40

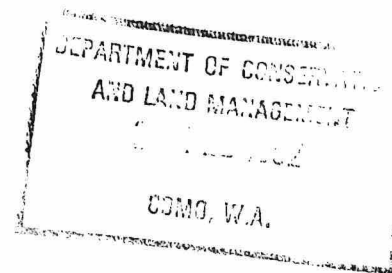
3.3 92.
~~Reserves Clerk~~ BB 7/5/92

9/28

Your Ref: ORIGINAL ON 02A959F3201
COPIES ON 018223F3102, 023821F3201
Our Ref: 2531/954V3, 3177/48V6, 1517/61, 2103/963 DC:NM

Telephone: 323 1416
Enquiries: D. CHAN

EXECUTIVE DIRECTOR
DEPARTMENT OF CONSERVATION AND
LAND MANAGEMENT
PO BOX 104
COMO WA 6152



I advise for your information that:-

1. (a) Class "A" Reserve 24491 "National Park" is amended by excising an area surveyed as Victoria Location 11890 on Diagram 89981 and of its area being reduced to about 39,936.7500 hectares. Public Plan Pinjarrega 1:50,000.
- (b) Class "A" Reserve 30082 "National Park - Dales Gorge" is amended to comprise Windell Locations 126, 127 and 131 on Reserve Plan 333 in lieu of Locations 7 and 50 and of its area being recalculated to about 606,597 hectares.
- (c) The purpose of Class "A" Reserve 30082 is changed to "National Park". Public Plans Roy Hill and Mount Bruce 1:250,000.
- (d) Class "A" Reserve 27575 (Swan Locations 6270, 10313, 3323 and 10987) "National Park" is amended by excluding an area surveyed as Swan Location 11533 on Plan 17813 and of its area being reduced to 1,068.6380 hectares. Public Plans Swan 1:10,000 1.3, 2.3. File 2103/63.
- (e) Class "A" Reserve 10129 "Water and Conservation of Flora and Fauna" is amended to comprise Kent Location 748 on Plan 17737 and of its area being established at 1,891.5618 hectares. Public Plans Lake Joy and Woondingellup 1:50,000.

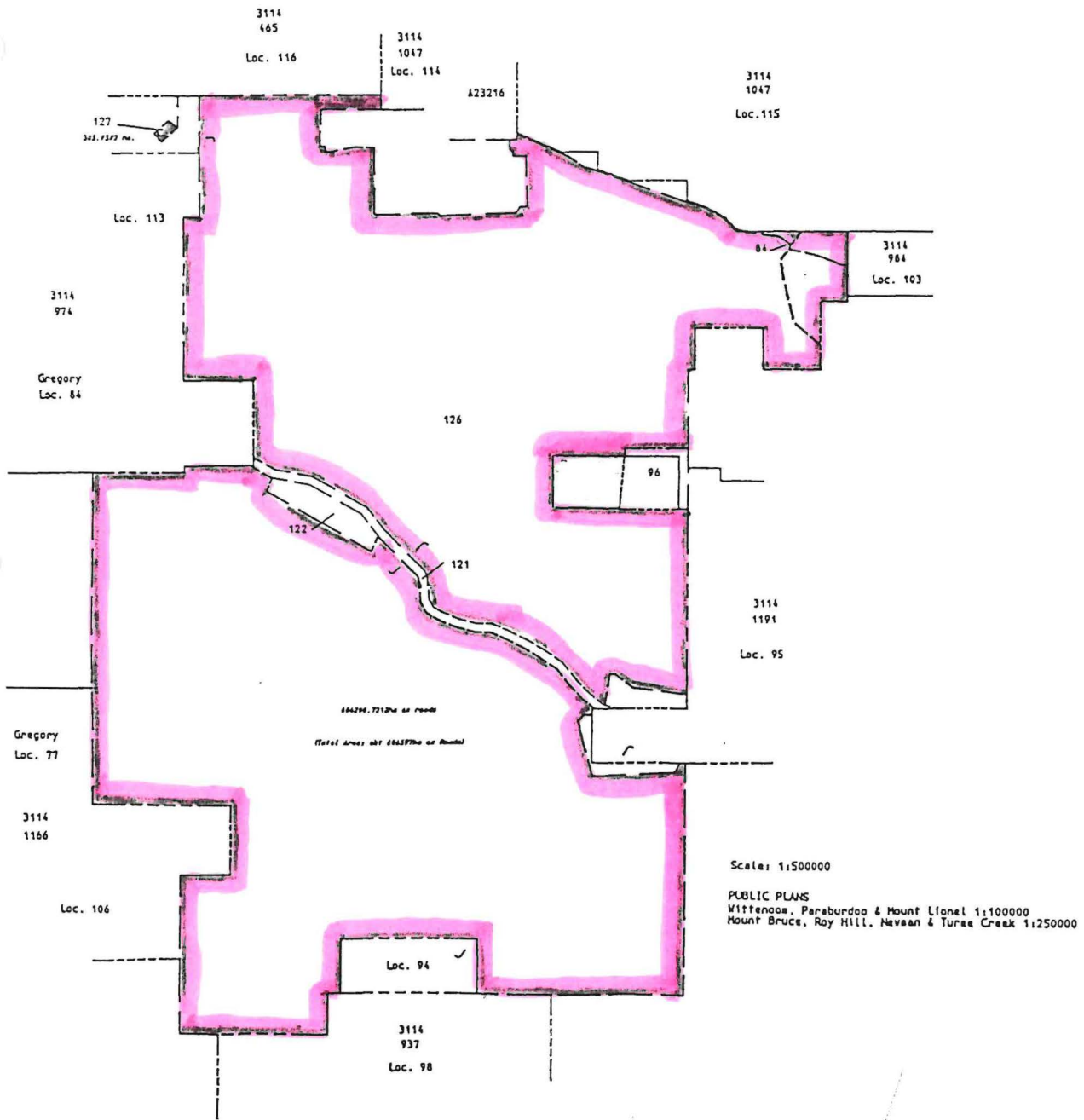
...2

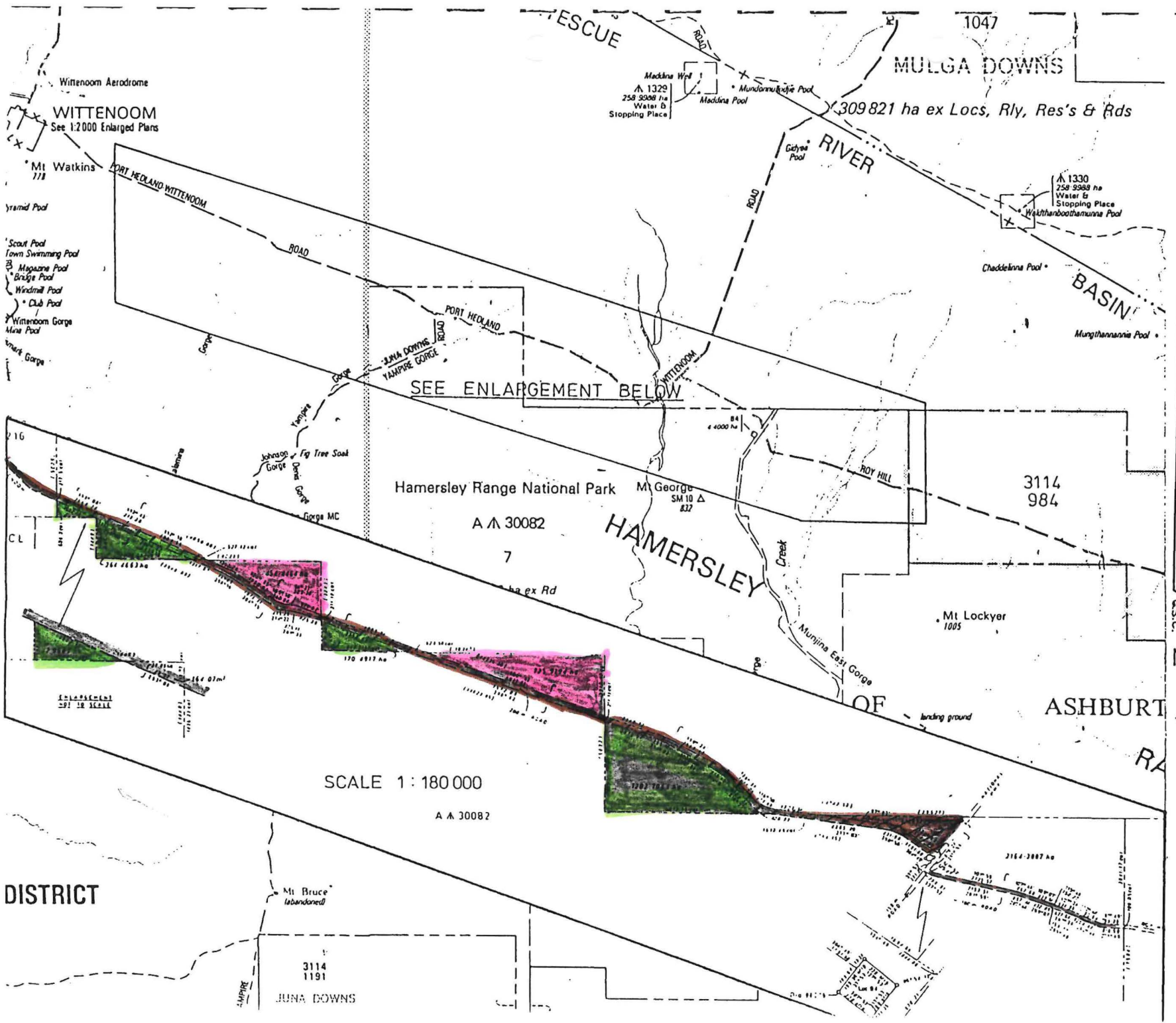
50
30
7

PROPOSED BOUNDARY CHANGES TO AM30082 "NATIONAL PARK" AS SHOWN ON RESERVE PLAN 333

PUBLIC PLANS:- WITTENOOM, PARABURDOO & MOUNT LIONEL 1:100 000s
& MOUNT BRUCE, ROY HILL, NEWMAN & TUREE CREEK 1:250 000s
CORR. 3177/48 Vol. 6
PILBARA DISTRICT

Excl.
[Signature]





PUBLIC PLANS: ROY HILL AND MOUNT BRUCE 1:250 000
 CORR 3117/1948 Vol 5
 SCALE 1:250 000

BLACK FROM AA30082.
 PROPOSED AMENDMENTS TO AA30082;
 EXCISIONS COLOURED PINK AND BROWN,
 ADDITIONS COLOURED GREEN.

[Handwritten signature]

§

CLAUSE 10

Reserve No. 30082 (Hamersley Range National Park).

10. (1) Reserve No. 30082, classified as of Class A, containing 604 089.946 4 hectares or thereabouts set apart for "National Park-Dales Gorge" and vested in the Authority is amended -

(a) by excising several portions of the reserve; and

(b) by including several portions of Crown land,

so that the reserve is comprised of an area of 606 597 hectares or thereabouts, being Windell Locations 126 and 127 on Reserve Plan No. 333.

(2) The purpose of Reserve No. 30082, as amended by subsection (1), is changed from "National Park-Dales Gorge" to "National Park".

4
71
4

During 1990 two excisions were made from Class "A" Hamersley Range National Park - Dales Gorge Reserve 30082.

The first was to exclude an area comprising 354.5017 hectares (as shown on DOLA Miscellaneous Diagram 170) which consisted of a strip 200 metres wide for the proposed Wittenoom - Roy Hill Road with the balance being released for tourist purposes. Clause 11 of Reserves and Land Revestment Act No. 21 of 1990 authorised the exclusion.

The second adjustment was excision of land required for the "Marandoo Project". Clause 15 of Reserves and Land Revestment No. 71 of 1990 authorised the action which resulted in areas of 9305.3828 hectares and 3951.6491 hectares comprising Windell Locations 121 and 122 respectively being excluded.

During transition of Act 21 of 1990 (Reserves Bill No. 1) it was reported to Parliament that further changes to the Reserve would be presented as soon as it became possible to do so. The changes related to several land exchanges and matters have now progressed to a stage where further Reserves Bill action is necessary to complete the dealings.

Two land exchanges are proposed. The first is best explained by referring to the attached plan. The areas coloured green and areas coloured brown and hachured black have been surrendered to the Crown by Mulga Downs Pastoral Station. The green areas will be incorporated within the National Park while the other portions are earmarked for the Wittenoom - Roy Hill Road. In exchange, Mulga Downs will gain the areas coloured pink. The changes are linked to the position of the Wittenoom - Roy Hill Road and are intended to provide more manageable boundaries for both parties.

The other exchange relates to Juna Downs Pastoral Station. Juna Downs has surrendered the area coloured orange on the second plan attached for inclusion in the Park in exchange for the portions of Park shown coloured yellow. Once again the changes are made for more effective management and to legitimise well established occupation of areas by the Pastoral Station.

It has been determined that the most convenient method of dealing with all the boundary changes was to completely redefine the reserve and Reserve Plan 333 has been drawn accordingly. The reserve will comprise Windell Location 126 and 127 as shown coloured pink.

For expediency it has been decided to excise the balance of the Wittenoom - Roy Hill Road at this time even though the Shire of Ashburton has asked the EPA to make a formal assessment on possible environmental matters. The decision to proceed with this excision was based upon the following facts:-

- (a) part of the alignment has already been excised. (Reserves Act 21/1990).

27 A
/

- 2 -

- (b) the Mulga Downs Pastoral Station has agreed to a land exchange based on this alignment.
- (c) it will avoid a further Reserves Bill submission to Parliament for separate excision.

If it is eventually considered that major alignment changes may be necessary or the proposal should not proceed, then the future of the land can be evaluated at that time.

Reserves Bill action is necessary to redescribe the Class "A" Reserve. In addition CALM has requested that the purpose of Reserve 30082 be changed from "National Park - Dales Gorge" to simply "National Park". There is no objection to this change which fits with CALM's practice to rationalise reserve purposes. However, reserves Bill action is also required to make the change.

Shire of Ashburton
Electoral District of Pilbara
Mining and Pastoral Region

LAND ADMINISTRATION

LA101

ADDENDUM

DOLA Files: 1212/894 and 2033/987.

In the notice at page 3341 of the *Government Gazette* dated 5 July 1991, in respect to the amendment of Mount Magnet Townsite include "and Portion of Lot 562" following the words "Mount Magnet Lot 555".

DOLA File 374/67.

In the Notices appearing at pages 575 and 3307 of the *Government Gazette* dated 14 February 1969 and 9 September 1983 respectively, with reference to Reserve 29558 insert "Suburban" after the word "Greenmount" where it appears.

D. MULCAHY, Chief Executive Officer,
Department of Land Administration.

LA401

RESERVES AND LAND REVESTMENT ACT No. 57/1991

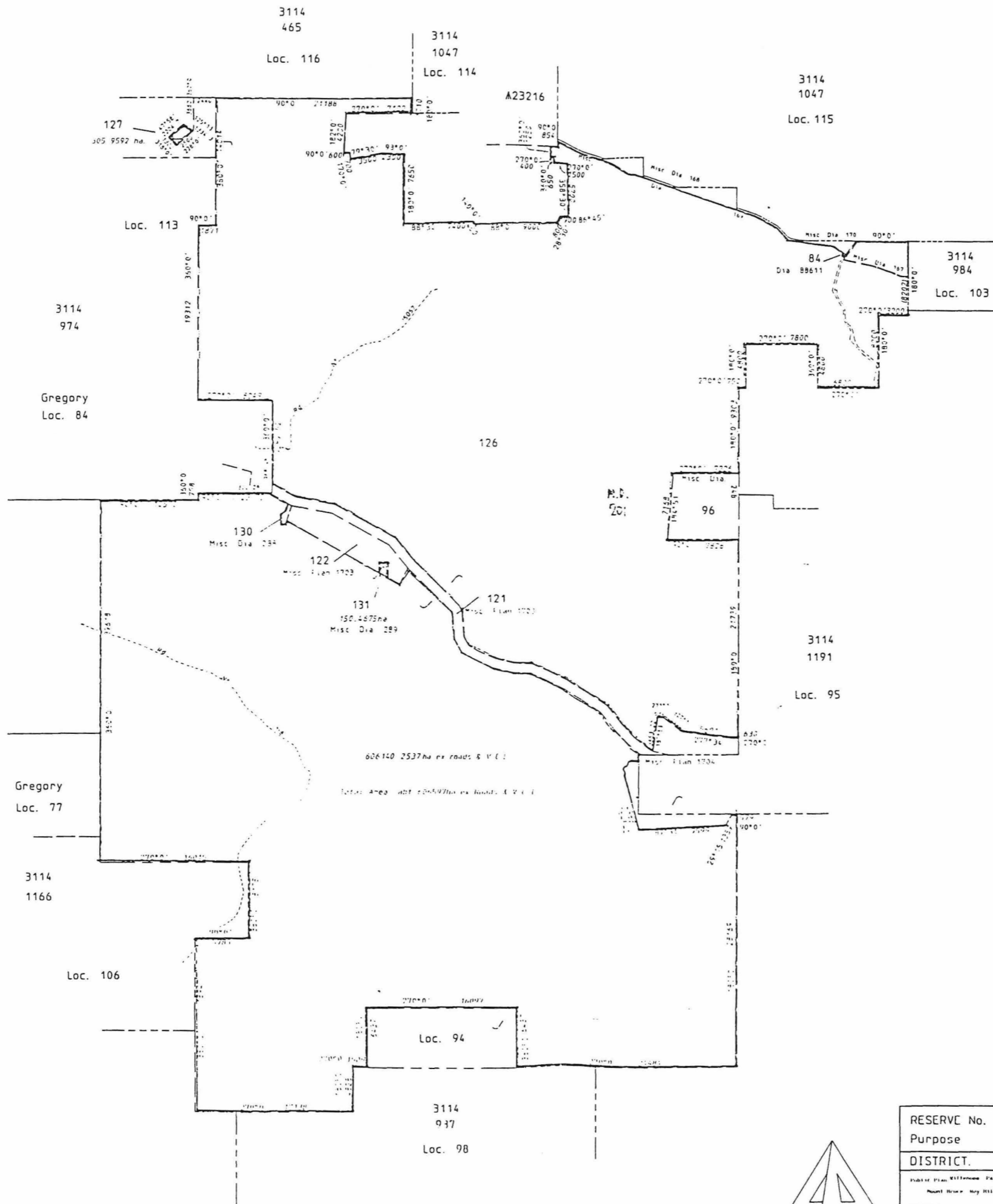
It is hereby notified that pursuant to the above Act assented to on December 17, 1991, the undermentioned reserves have been dealt with in the manner described.

1. Class A Reserve 18720 "National Park" to comprise Margaret River Lots 45, 46, 53, 54 and 96 on Reserve Plan 334 and of its area being established at 18.0195 hectares. The purpose of Reserve 18720 is changed to "Park and Recreation". Public Plans Margaret River Townsite 1:2000 09.02, 09.03. File 807/1988.
2. Class A Reserve 29911 (Boyup Brook Lot 342) "Park" is amended by excising an area of 754 m² now comprised in Lot 369 on Diagram 89882 and of its area being reduced to 2.3147 hectares. Public Plan Boyup Brook 1:2000 5.17. File 445/53.
3. Class A Reserve 18090 (Cunderdin Lots 282 and 283) "Recreation" is cancelled. Public Plan Cunderdin 1:2000 Pt 14.18. File 656/989.
4. (a) Class A Reserve 39960 (Nelson Locations 13286, 13287 and portion of each of Locations 5616 and 5617) "National Park" is cancelled.
(b) Class A Reserve 40841 (Nelson Location 13318) "National Park" is cancelled.
(c) Class A Reserve 41466 (Nelson Locations 13303, 7594, 13344 and portion of each of Locations 8730 and 12270) "National Park and Water" is amended by including the land referred to in paragraphs (a) and (b) above and its area is increased to 21 608.2688 hectares. Public Plans Deep River SW, NW, Wainbup SE, NE, Saddle Island NW and Pt Chatham NE 1:25 000. File 2580.990.
5. (a) The classification of Class A over Reserve 8800 is cancelled (now Class C).
(b) The purpose of Class C Reserve 8800 (Goomalling Lot 9) is changed from "Park and Rest Room" to "Park and Community Centre". Public Plan Goomalling 1:2000, 30.18. File 7134/03 V2.
6. (a) Class A Reserve 30082 "National Park—Dales Gorge" is amended to comprise Windell Locations 126, 127 and 131 on Reserve Plan 333 in lieu of Locations 7 and 50 and of its area being recalculated to about 606 597 hectares.
(b) The purpose of Class A Reserve 30082 is changed to "National Park". Public Plans Roy Hill and Mount Bruce 1:250 000. File 3177/948 V6.
7. Class A Reserve 18414 (Wellington Location 4071) "Stopping Place" is cancelled. Public Plan Lake Preston 1:25 000 SE. File 5347/22.
8. Class A Reserve 10129 "Water and Conservation of Flora and Fauna" is amended to comprise Kent Location 748 on Plan 17737 and of its area being established at 1 891.5618 hectares. Public Plans Lake Joy and Woondingellup 1:50 000. File 1517/61.
9. The purpose of Class A Reserve 10504 (Nelson Location 12182) is changed from "Recreation and Stopping Place" to "Parkland Rehabilitation, Gravel and Water". Public Plans Deeside NE and Yerraminnup SE 1:25 000. File 501/01.
10. Class A Reserve 27575 (Swan Locations 6270, 10313, 3323 and 10987) "National Park" is amended by excluding an area surveyed as Swan Location 11533 on Plan 17813 and of its area being reduced to 1 068.6380 hectares. Public Plans Swan 1:10 000 1.3, 2.3. File 2103/63.
11. Class A Reserve 20091 "Recreation and Parklands" is amended to comprise Swan Location 11139 on Plan 17410 in lieu of Locations 3243, 2454, 2487, 2401, 2457 and 2411 and of its area being established at 84.4460 hectares. Public Plans Perth 1:2000, 11.38, 11.39, 12.38 and 12.39. File 6169/28 V2.
12. Class A Reserve 24491 "National Park" is amended by excising an area surveyed as Victoria Location 11890 on Diagram 89981 and of its area being reduced to about 39 936.7500 hectares. Public Plan Pinjarrega 1:50 000. File 2531/54 V3.

1 Records please file
2 Reserves classed 7.2.92
BB 13/2

Dimension shown hereon are subject to survey
 Supersees Reserve Plan 167 & Misc. Dia. 201
 Includes former Locations 7, 50 & 119

317
 163



RESERVE No.	A 30082	Area.	abt 606597ha ex Roads & V. C. L.	FILE No.	3177 / 948 vol. 6
Purpose	National Park	SCALE	1: 250000	All amendments in outline	
DISTRICT.	WINDELL	SUBJECT TO SURVAY		Approved	Page
Public Plan, Willemsoe, Paraphrase & Plan, 1:100000		AMENDMENTS		Revised on Field Plan	
Point History, May 1951, Nelson & Sons, 1:250000		Sheet No.	Page	Initials	
Reference	Date				
Prepared by	Date				
Checked	Date				
Approved	Date				
				DEPT. OF LAND ADMINISTRATION	
				RESERVE 333	
				PLAN No.	

