

NATURE RESERVE

RESERVE NO: "A" 34606

GOVERNMENT GAZETTE
Date Page No.

FILE NUMBER: 454/77

PURPOSE: Cons. Flora & Fauna

22.4.77 1116

NAME: Gibson Desert

CLASS (Land Act): "A"

22.4.77 1088

AREA: 1,859,286 ha (approx)

VESTING: W.A.W.A.

22.4.77 1090

LOCATION NO(S): Milyuga & Tugaila

CLASSIFICATION:
(Wildlife Act
Section 12A)

LITHO: RAWLINSON & WELLS 1:500 000

LOCAL AUTHORITY: WILUNA SHIRE

Notes:

RESERVE ACT 1996 (NO 32 OF 1996)

155

13388, 13389, 13390, 13391, 13392, 13393, 13394, 13395, 13396, 13397, 13398, 13399, 13400, 13401, 13402, 13403, 13404, 13405, 13406, 13407, 13408, 13409, 13410, 13411, 13412, 13413, 13414, 13415, 13416, 13417, 13418, 13420, 13421, 13422, 13423, 13424, 13425, 13426, 13427, 13428, 13432, 13463 and 13481 as shown bordered red on Reserve Plan 867 (Sheets 1 to 6 inclusive) and Miscellaneous Diagrams 309, 316 and 525 and its area be established at about 115447 hectares.

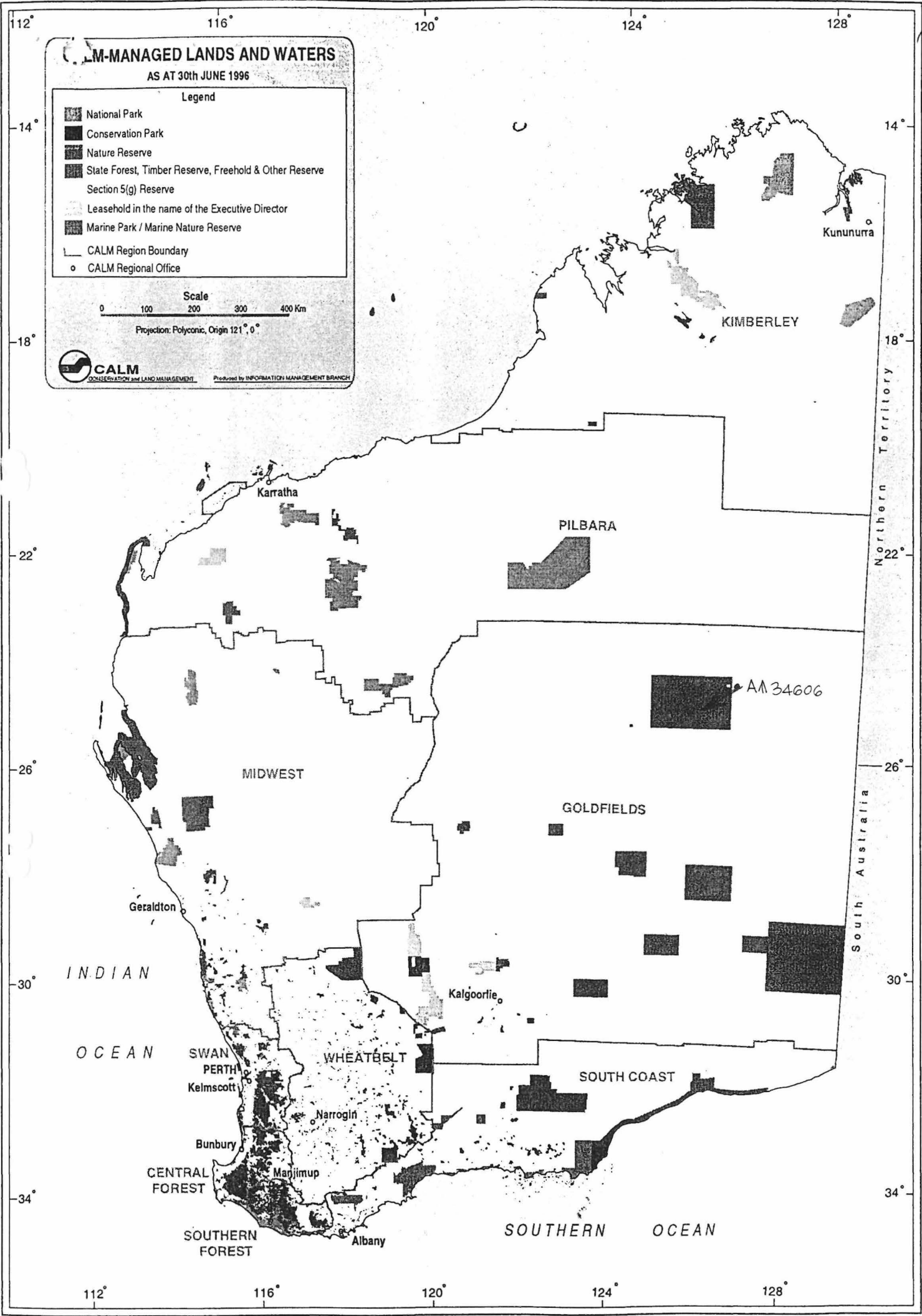
DOLA File: 604/978

CONSERVATION
LAND AND MANAGEMENT
4 NOV 1996
SOMG, W.A.

- 7. (i) Class 'C' Reserve 43182 (Canning Location 3893) "Conservation of Flora and Fauna" is cancelled.
- (ii) Class 'A' Reserve 23076 (Canning Location 3766) "Conservation of Flora and Fauna" is amended by the inclusion of Locations 3893 and 4107 (formerly Lot 35 on Plan 4742) and its area being increased to 21.9901 hectares.
Public Plans: BG34(2) 23.21, 24.21 and 24.22
DOLA File: 1930/950.
- 8. (i) Class 'A' Reserve 34772 (Meenaar Lot 71) "Conservation of Flora and Fauna" is cancelled.
- (ii) Class 'A' Reserve 29977 (Avon Location 28608) "Conservation of Flora and Fauna" is amended by the inclusion of Meenaar Lot 71 and its area being increased to 94.1208 hectares.
Public Plans: Meenaar Townsite
DOLA File: 3592/968
- 9. (i) Class 'C' Reserve 18625 (Bowgada Lot 52) "School Site" is cancelled.
- (ii) Class 'A' Reserve 29745 (Bowgada Lot 59) "Conservation of Flora and Fauna" is amended by the inclusion of Lot 52 and its are being increased to 152.2472 hectares.
Public Plan: BG41 (2) 30.35
DOLA File: 2046/969
- 10. Class 'A' Reserve 15162 (Plantagenet District) "Parklands" is amended by:-
 - (a) the excision of that area now contained in Location 7761.
 - (b) redescribing the reserve to comprise Plantagenet Location 6923 on Land Administration Plan 18597 and of its area being reduced to 58.0970 hectares.
Public Plans: Mount Barker (25) SE and BJ27(10) 8.2
DOLA File: 8777/913
- 11. Class 'A' Reserve 18325 (Swan Locations 3301, 3762, 5563, 7727 and 7583) "Recreation" is amended by the excision of the area now comprised on Location 11985 and its area being reduced to 161.5586 hectares.
Public Plans: BG34(2) 14.28 and 14.29
DOLA File: 5192/896 V7
- 12. Class 'A' Reserve 25039 (Emu Hill Lots 1 to 14 inclusive, 16, 17, 19 to 63 inclusive, 66, 67, 71, 72 and 73) "Conservation of Flora and Fauna" is amended by—
 - (a) the inclusion of Lot 74 (formerly Lot 15 on Plan 1711),
 - (b) by recalculation of its area so that the reserve comprises 61.7839 hectares.
Public Plan: Emu Hill Townsite
DOLA File: 2318/993
- 13. Class 'A' Reserve 39962 (Hamersley Lots 16 and 17, North Beach Lots 709 and 710 and Waterman Lots 4 and 6) "Conservation of Flora and Fauna, and Passive Recreation" is amended by the inclusion of North Beach Lot 715 and its area being increased to 95.9144 hectares.
Public Plan: BG34(2) 7.35
DOLA File: 3129/977 V4
- 14. (i) Class 'A' Reserve 35291 (Avon Location 28572) "Conservation of Flora and Fauna" is cancelled.
- (ii) Class 'A' Reserve 33254 (Avon Location 29024) "Conservation of Flora and Fauna" is amended by the inclusion of Location 28572 and its area being increased to 14.1015 hectares.
Public Plans: Northam (25) SW and Toodyay (25) SE
DOLA File: 544/972
- 15. Class 'A' Reserve 38924 (Avon Locations 28805 and 28937) "Conservation of Flora and Fauna" is amended by the inclusion of Location 29096 on Diagram 91497 and its area being increased to 931.7567 hectares.
Public Plan: Toodyay (25) SW, BG35(10) 8.3 and 8.4
DOLA File: 911/984 V2
- 16. (i) Class 'A' Reserve 34606 (Milyuga Location 13) "Conservation of Flora and Fauna" is amended by the excision of that area now comprised in Milyuga Location 14 on Reserve Diagram 1303 and of its area being reduced to about 1,842,864 hectares.
Public Plan: Rawlinson 1:500,000
DOLA File: 1687/976
- (ii) Class 'A' Reserve 29452 (Milyuga District) "Use and Benefit of Aboriginal Inhabitants" is amended to comprise Milyuga Location 14 on Reserve Diagram 1303 and of its area being increased to about 20,566 hectares.
Public Plan: Rawlinson 1:500,000
DOLA File: 1397/968

TO: CERIK WOODVALL

5-11-96
A. A. SKINNER, Chief Executive
Ms. Collins - for your litho pls.
6.11.96



CALM-MANAGED LANDS AND WATERS
AS AT 30th JUNE 1996

Legend

- National Park
- Conservation Park
- Nature Reserve
- Slate Forest, Timber Reserve, Freehold & Other Reserve
- Section 5(g) Reserve
- Leasehold in the name of the Executive Director
- Marine Park / Marine Nature Reserve
- CALM Region Boundary
- CALM Regional Office

Scale
0 100 200 300 400 Km

Projection: Polyconic, Origin 121°, 0°

CALM
CONSERVATION AND LAND MANAGEMENT
Produced by INFORMATION MANAGEMENT BRANCH

KIMBERLEY

Kununurra

Northern Territory

Karratha

PILBARA

AM 34606

MIDWEST

GOLDFIELDS

South Australia

INDIAN OCEAN

Geraldton

Kalgoorlie

SWAN PERTH
Kelmescott

WHEATBELT

SOUTH COAST

Narrogin

Bunbury
CENTRAL FOREST

Manjimup

SOUTHERN FOREST

Albany

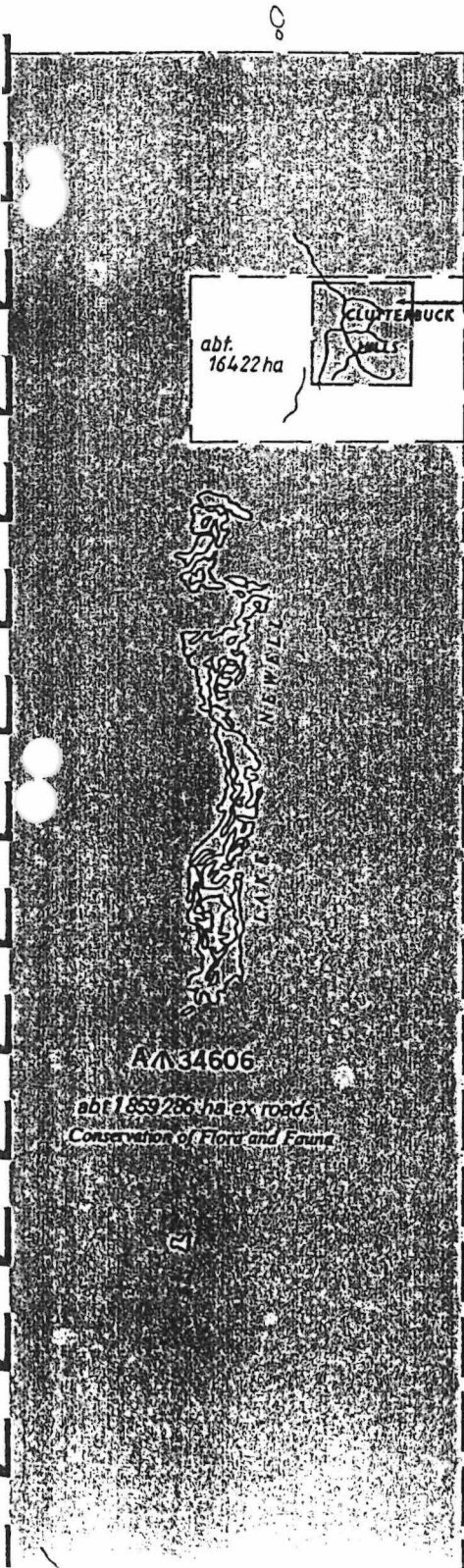
SOUTHERN OCEAN



156
158

1. THE EXCISION OF THE AREA COLOURED BLUE FROM CLASS "A" RESERVE 34606.
2. THE AMENDMENT OF CLASS "A" RESERVE 29452 TO INCLUDE THE AREA COLOURED BLUE.

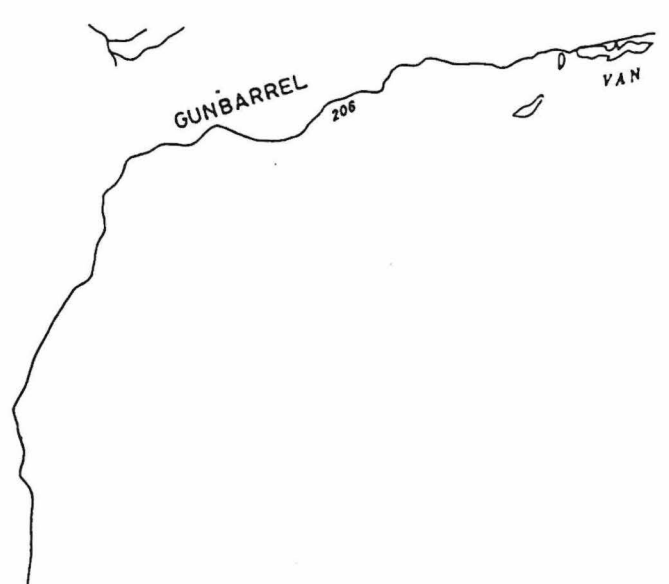
MILYUGA DISTRICT
 PUBLIC PLAN : RAWLINSON 1:500 000
 Corr. 1397/968
 SCALE 1 : 500 000



AA29452
 2
 abt 41439810 ha
 Use and Benefit of Aboriginal Inhabitants

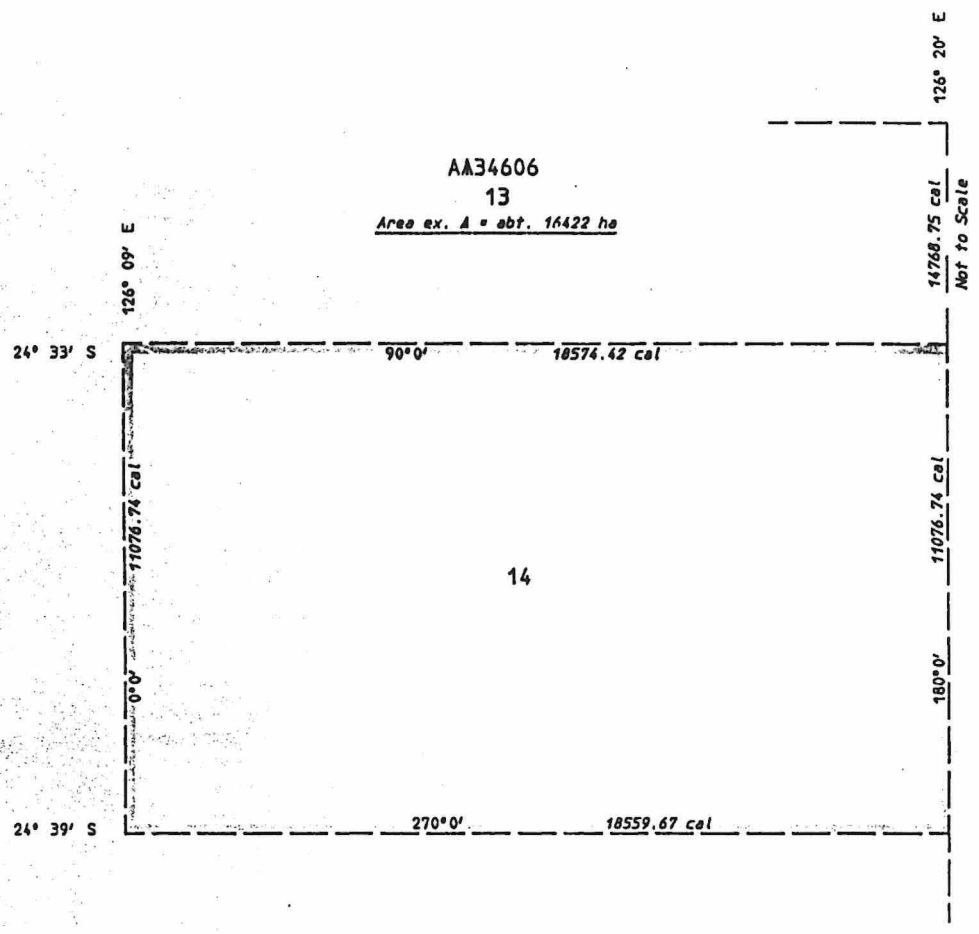
G I B S O N

D E S E R T



1548
156

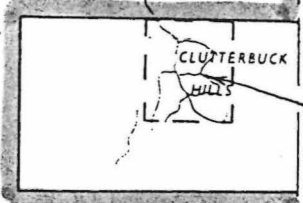
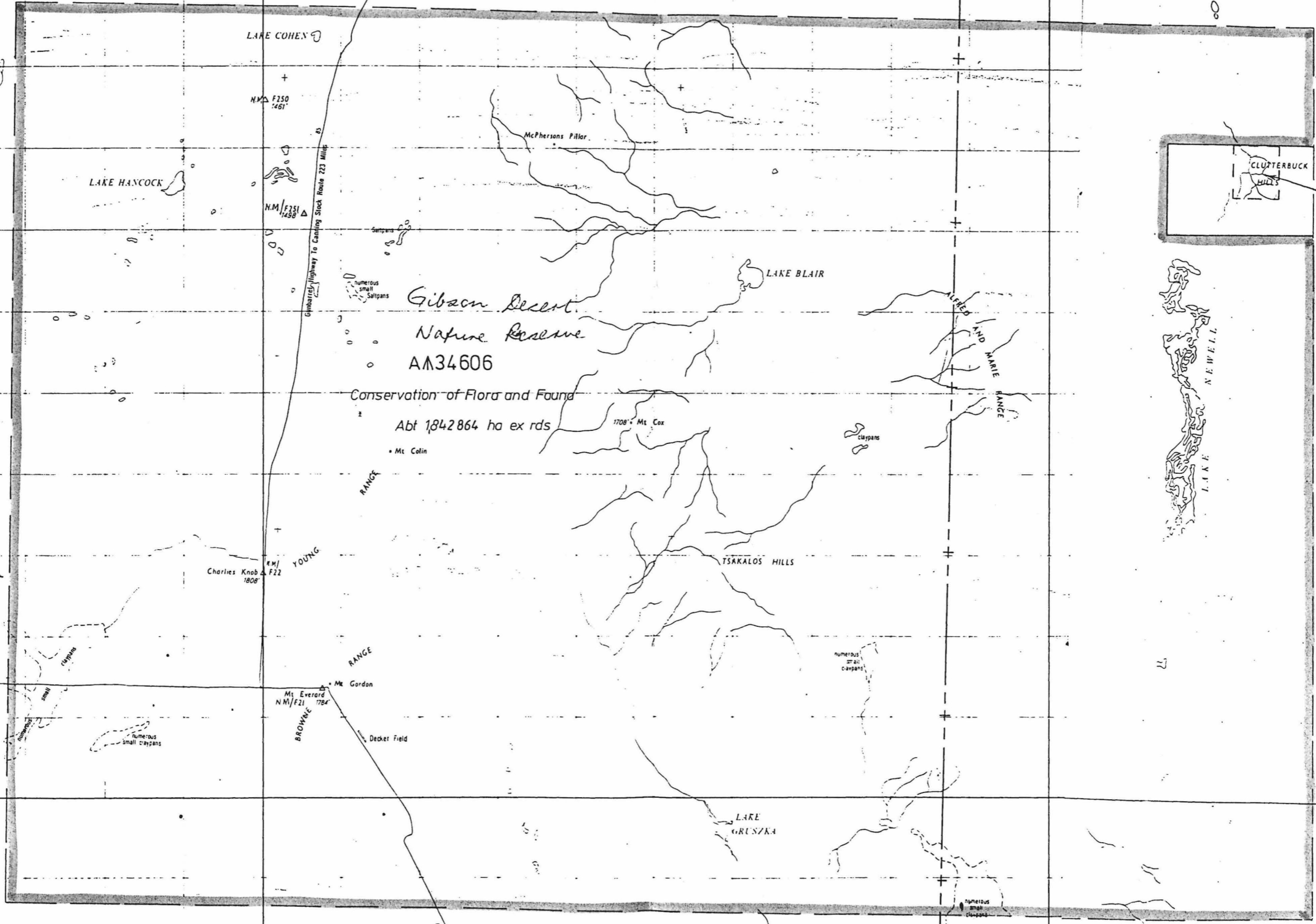
Dimensions shown hereon are SUBJECT TO SURVEY
Supersedes Reserve Diagram 722
Includes Milyuga Location 2, & Ptn. AA34606 (Milyuga Location 13).



MILYUGA Location 14 created on this Diagram.



RESERVE No. A29452 AREA abt. 20566 ha Purpose Use & Benefit of Aboriginal Inhabitants		FILE No. 1397/968
DISTRICT, MILYUGA		SCALE 1:100 000 All measurements in metres
Public Plan Amulison 1:300 000	Gazetted 25-10-96 Page 5645	
Reference P/L 17 Col. Book Page 33	Recorded on Public Plan RL 19-11-96	
Prepared by P.J. Pearce Date 3/5/1995	Registered P.J. Pearce Date 27/4/1995	
Checked <i>[Signature]</i> Date 11.5.95	For Manager Statutory Services Survey Index Plan	
Approved <i>[Signature]</i> Date 12.5.95	DEPT. OF LAND ADMINISTRATION	
Manager Statutory Services	RESERVE DIAGRAM No. 1303	



Λ 29452
2
Use & Benefit of
Aborigines
abt 20 566 ha

Gibson Desert
Nature Reserve
AM34606

Conservation of Flora and Fauna
Abt 1842864 ha ex rds

FUGAILA

On Pt. Plans RAWLINSON & WELLS
1:500 000

JGA