

**RESERVE GAZETTAL ACTION SHEET  
FOR REGIONS AND DISTRICTS**

**LANDS CLERK:** Attach a copy of map and forward to the following :

1. REGIONAL MANAGER:  
CENTRAL FOREST, GREENOUGH, GOLDFIELDS, KIMBERLEY, SWAN  
REGION, PILBARA, SOUGH COAST, SOUTHERN FOREST, WHEATBELT
2. DISTRICT MANAGER: WARPOLE / PEMBERTON
3. **CLERK, WOODVALE**
4. O.I.C. INVENTORY BUNBURY/KELMSCOTT/MANJIMUP
5. DISTRICT WILDLIFE OFFICER: \_\_\_\_\_

**REASON FOR GAZETTAL:**

*Cancellation of Reserves #1466, 28478, 17495, 26628,  
22479, and amalgamation into Reserve 36896.  
AND Reserve 36996 areas increased by 79,671.5 ha  
to 114,566.5 ha. Action in accordance with  
D' Entrepreneurs Management Plans.*

**RESERVE DETAILS**

RESERVE NUMBER: 36996  
 CALM FILE NUMBER: 028655F3201  
 MAP REFERENCE: plans held in land info. branch.  
 SHIRE: mulka

**CHANGES MADE AT GIVEN GAZETTAL DATE**

NAME OF RESERVE: 36996  
 PURPOSE: National Park & Waters  
 CLASS: 'A'  
 AREA: 114,566.5 ha  
 VESTING: NPWCA  
 DATE AND PAGE NO. OF CURRENT GAZETTAL: 29.1.93 p.879,880.

*[Signature]*  
 LANDS CLERK

1.6.94  
 DATE

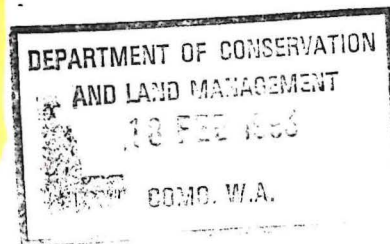
## LAND ADMINISTRATION

LA401

### RESERVES ACT 1992

It is hereby notified that pursuant to the above Act assented to on December 9, 1992, the undermentioned reserves have been dealt with in the manner described:—

1. Class "A" Reserve 15185 is amended to comprise Augusta Lots 871, 872 and Sussex Locations 4929 and 4930 on Reserve Diagram 1068 with an area of 9.8187 hectares and its purpose changed from "Parklands and Recreation" to "Conservation of Flora and Fauna". Reserve 15185 is automatically vested in the National Parks and Nature Conservation Authority pursuant to the CALM Act 1984. Public Plans Leeuwin 25 000 NE and part SE, Augusta 10 000 BF28 portions 3.1, 4.1 BF27 portions 3.8, 4.8, Augusta 2 000 BF28 15.03 File 9281/13.
2. Class "A" Reserve 7692 "National Park" is amended to comprise Nelson Locations 5200, 5201, 5202, 13352, 13354 and 13373 on Reserve Plan 358 with an area of 1590.7618 hectares. Public Plans Charnwood 2029 (II) SW, SE 1:25 000. Files 3564/989, 74/01.
3. Class "A" Reserve 12398 (Avon Location 28967) "Conservation of Flora and Fauna" is amended to include Avon Location 25893 on Diagram 55790 with its area being increased to 254.5662 hectares. Public Plan: Quairading SW 1:25 000. File 11958/06.
4. Class "A" Reserve 6962 "Parklands and Recreation" is amended to comprise Bunbury Lot 729 on Reserve Plan 345 (in lieu of Lot 385) with its area being increased to 1.4659 hectares. Public Plan: Bunbury and Environs 2 000, 02.32. File: 3990/895V2.
5. Class "A" Reserve 22624 (Broadwater Sub Lots 25 to 28 inclusive and Sussex Location 4165) "Parklands and Recreation" is amended to include Sub Lot 34 on Diagram 89781 with its area being recalculated to 13.5691 hectares as shown on Reserve Diagram 946. Public Plan: BF29(2) 21.35, 22.35. File 7031/47.
6. Class "A" Reserve 36419 (Victoria Location 11381) "Conservation of Flora, Water and Protection of Caves" is amended to exclude the area on Diagram 90436 with its area being reduced to 1384.6261 hectares. Public Plan: Beagle Island and Logue 1:50 000. Files: 308/68, 3640/78.
7. The purpose of Class "A" Reserve 39824 (Avon Location 28913) is changed to "Conservation Park and the agreement defined in Section 2 of the Alumina Refinery Agreement Act 1961". Public Plans: Beraking NW, SW, SE 1:25 000. File 448/987.
8. Class "A" Reserve 26480 (Plantagenet Locations 6875 and 7343) "Recreation" is amended to include Denmark Lot 1027 on Diagram 90304 with its area being increased to 8.8187 hectares. Public Plan: Denmark (2) 20.07, 20.08. File 1833/64.
9. (i) The following reserves are cancelled:—
  - (a) Class "A" 41466 "National Park and Water"
  - (b) Class "A" 17495 "National Park"
  - (c) Class "A" 26628 "National Park and Water"
  - (d) Class "A" 28478 "National Park and Water"
  - (e) Class "A" 28479 "National Park and Water"
  - (f) Class "A" 15776 "Camping and Recreation"
  - (g) Class "C" 9537 "Excepted from Sale"
  - (h) Class "C" 9539 "Excepted from Sale"
  - (i) Class "C" 9540 "Excepted from Sale"
  - (j) Class "C" 9588 "Experimental Farm"
  - (k) Class "C" 11182 "Excepted from Sale"
  - (l) Class "C" 14891 "Excepted from Sale"
  - (m) Class "C" 17015 "Public Utility"
  - (n) Class "C" 21122 "Recreation"
  - (o) Class "C" 21712 "Excepted from Sale"
  - (p) Class "C" 25784 "Water"
  - (q) Class "C" 26198 "Recreation"
  - (r) Class "C" 29681 "Conservation of Flora and Fauna"
  - (s) Class "C" 30503 "Experimental Plot (Agriculture Department)"
  - (t) Class "C" 31357 "Conservation of Fauna"
  - (u) Class "C" 33495 "Government Requirements"
  - (v) Class "C" 33496 "Government Requirements"
  - (w) Class "C" 33993 "Government Requirements"
  - (x) Class "C" 34075 "Government Requirements"
  - (y) Class "C" 38234 "Educational Purposes"
  - (z) Class "C" 17072 "Public Utility"



1. File  
18.2.93  
2. Land Clerk.  
- for reserve admin  
sheet please.  
NRK  
19.2.93

209  
73  
209

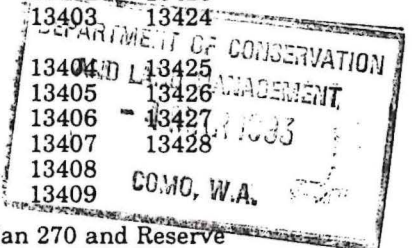
028655-2401

205  
194  
93

9. (ii) Class "A" Reserve 36996 "National Park and Water" is amended to comprise Nelson Locations:—

3706	6968	7673	7840	7860	12903	12940	13390	13410
4418	7202	7674	7841	7861	12916	12941	13391	13411
5222	7203	7675	7842	7862	12917	12942	13392	13412
5223	7562	7676	7843	7863	12918	12953	13393	13413
5224	7594	7678	7844	7864	12919	13057	13394	13414
5225	7612	7679	7845	7898	12920	13058	13395	13415
5239	7636	7680	7846	7899	12921	13078	13396	13416
5600	7640	7681	7847	8288	12922	13286	13397	13417
5602	7645	7682	7848	pt 8730	12923	13287	13398	13418
5603	7646	7683	7849	9277	12924	13303	13399	13420
pt 5616	7649	7760	7850	9957	12925	13318	13400	13421
5617	7658	7831	7851	11100	12928	13344	13401	13422
6950	7659	7832	7852	pt 12270	12929	13382	13402	13423
6951	7660	7833	7853	12730	12930	13383	13403	13424
				12731			13404	13425
6955	7661	7834	7854	12873	12932	13384	13405	13426
6962	7662	7835	7855	12887	12933	13385	13406	13427
6964	7669	7836	7856	12891	12934	13386	13407	13428
6965	7670	7837	7857	12896	12936	13387	13408	
6966	7671	7838	7858	12901	12937	13388	13409	
6967	7672	7839	7859	12902	12939	13389		

D End-recast  
N-P??



on Reserve Plan 367 Sheets 1 to 5, Miscellaneous Plan 1662, Reserve Plan 270 and Reserve Diagram 871 with an area of 114 566.5135 hectares. Public Plans: Wainbup NW, SW, NE, SE 1:25 000, Deep River SW and NW 1:25 000, Meerup NE, NW, SE & pt SW 1:25 000, Northcliffe SW, SE 1:25 000, Gardiner River NW, NE and portion SE 1:25 000, Pike NE 1:25 000, Lake Jasper NW, NE, SE and SW 1:25 000, Charnwood SW 1:25 000, Saddle Island NW and pt Chatham NE 1:25 000. File 604/78.

10. Class "A" Reserve 15197 "Protection of Flora" is amended to comprise Williams Location 15742 on Plan 16561 with an area of 56.7859 hectares and its purpose changed to "Conservation of Flora and Fauna". Reserve 15197 is automatically vested in the National Parks and Nature Conservation Authority pursuant to the CALM Act 1984. Public Plan: Mugerugging SE 1:25 000. File: 8553/13.

11. Class "A" Reserve 35637 "National Park" is amended to comprise Marmion Locations 21, 22, 23, 24, 25 and 58 on Reserve Plan 338 with an area of 60, 396.5568 hectares. Public Plans: Menzies, Kalgoolie, Edjudina and Kuralpi 1:250 000. File: 1905/76.

12. Class "A" Reserve 7537 (Swan Location 10159 and Swan View Sub Lots 68, 69, 70) is amended to include Sub Lot 135 on Diagram 90374 and Location 11664 on Plan 17947 with its area being increased to 2 676.8107 hectares. Public Plans: Mundaring NW 1:25 000, Perth (2) BG34 25.31, 26.30, 26.31, 25.33, 25.34, 25.35, 25.36, 25.37, Perth (10) BG34 6.7. File: 13479/98V7.

13. Class "A" Reserve 25113 (Kent Locations 788, 789, 790, 791, 792, 793, 794, 952, 986, 2112 and Roe Location 3102) "Conservation of Fauna" is amended to include Kent Location 2126 on Miscellaneous Diagram 240 with its area being increased to 107 812.0866 hectares and its purpose is changed to "Conservation of Flora and Fauna". Public Plan: Cameron Creek 1:50 000. File: 5856/52V2.

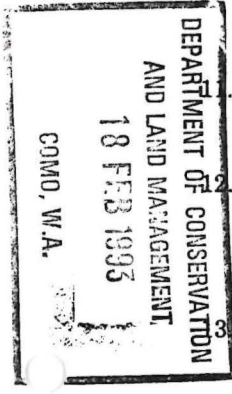
14. Class "A" Reserve 17705 "Recreation and Stopping Place" is amended to comprise Kojonup Location 9299 on Diagram 90415 in lieu of Locations 7676 and 8979 with its area being increased to 4.4818 hectares. Public Plan: Warrenup NW 1:25 000. File: 4860/20.

15. Class "A" Reserve 16040 "Conservation of Flora and Fauna" is amended to comprise Cowcowing Agricultural Area Lot 302 on Reserve Diagram 945 in lieu of Lots 268 and 131 with its area being reduced to 249.4245 hectares. Public Plan: Koorda SE 1:25 000. File: 2229/15.

16. Class "A" Reserve 32549 (Roe Locations 1229, 2976, 3046, 3072), "Conservation of Flora and Fauna" is amended to include that portion now comprised in Roe Location 3114 on Diagram 90067 with its area being decreased to 3 604.7211 hectares. Public Plan: Eclipse Lake 1:50 000. File: 900/70.

17. The purposes of Class "A" Reserves 39820 (Murray Location 1829) 39822 (Murray Locations 556 to 560 inclusive, 567, 568, 569, 744 to 749 inclusive, 787, 792, 1831 and Wellington Locations 1548 to 1552 inclusive, 2623, 2632, 5504, 5505 and part 4092) and 39823 (Murray Locations 674, 1597 and 1830) are changed to "Conservation Park and the agreement defined in Section 2 of the Alumina Refinery Agreement Act 1961". Public Plans: Nanga NW, SW, NE, 1:25 000, Nalyerin NW and Marradon SW 1:25 000. Files: 452/987, 454/987 and 455/987.

18. (I) Class "A" Reserves 39840 (Murray Location 1825) "Conservation", 39841 (Murray Location 1826) "Conservation", and 39842 (Murray Location 1824) "Conservation" are cancelled.



SENTRECASTEAUX CONTROL FILE  
1 File  
2 Land Clerk  
MRK



DOLA

Department of LAND ADMINISTRATION

028655F3201

202  
207

Your Ref:

Our Ref: 754/970 CA:DR

Telephone: 323 1614

Enquiries: C ABEY

EXECUTIVE DIRECTOR  
DEPARTMENT OF CONSERVATION AND  
LAND MANAGEMENT  
PO BOX 104  
COMO WA 6152

**RESERVES ACT 1992**

I advise for your information that an act to effect certain changes in respect of certain changes in respect of certain Reserves and other land was assented to by Parliament on December 9, 1992. The relevant amendments are listed on the attached schedule.

Notice of the above was published in the Government Gazette dated January 29, 1993 and I have enclosed prints showing the said Reserves.

**T THOMSON**  
**A/MANAGER**  
**ACQUISITIONS, ROADS & RESERVES**  
**LAND OPERATIONS DIVISION**

January 26, 1993

Enc.

01DRLP66

1. Records - please file & return: MRR
2. lands clerk.

9. (i) The following reserves are cancelled:-

- (a) Class "A" 41466 "National Park and Water"
- (b) Class "A" 17495 "National Park"
- (c) Class "A" 26628 "National Park and Water"
- (d) Class "A" 28478 "National Park and Water"
- (e) Class "A" 28479 "National Park and Water"
- (f) Class "A" 15776 "Camping and Recreation"
- (g) Class "C" 9537 "Excepted from Sale"
- (h) Class "C" 9539 "Excepted from Sale"
- (i) Class "C" 9540 "Excepted from Sale"
- (j) Class "C" 9588 "Experimental Farm"
- (k) Class "C" 11182 "Excepted from Sale"
- (l) Class "C" 14891 "Excepted from Sale"
- (m) Class "C" 17015 "Public Utility"
- (n) Class "C" 21122 "Recreation"
- (o) Class "C" 21712 "Excepted from Sale"
- (p) Class "C" 25784 "Water"
- (q) Class "C" 26198 "Recreation"
- (r) Class "C" 29681 "Conservation of Flora and Fauna"
- (s) Class "C" 30503 "Experimental Plot  
(Agriculture Department)"
- (t) Class "C" 31357 "Conservation of Fauna"
- (u) Class "C" 33495 "Government Requirements"
- (v) Class "C" 33496 "Government Requirements"
- (w) Class "C" 33993 "Government Requirements"
- (x) Class "C" 34075 "Government Requirements"
- (y) Class "C" 38234 "Educational Purposes"
- (z) Class "C" 17072 "Public Utility"

9. (ii) Class "A" Reserve 36996 "National Park and Water" is amended to comprise Nelson Locations:-

3706	6968	7673	7840	7860	12903	12940	13390	13410
4418	7202	7674	7841	7861	12916	12941	13391	13411
5222	7203	7675	7842	7862	12917	12942	13392	13412
5223	7562	7676	7843	7863	12918	12953	13393	13413
5224	7594	7678	7844	7864	12919	13057	13394	13414
5225	7612	7679	7845	7898	12920	13058	13395	13415
5239	7636	7680	7846	7899	12921	13078	13396	13416
5600	7640	7681	7847	8288	12922	13286	13397	13417
5602	7645	7682	7848	pt 8730	12923	13287	13398	13418
5603	7646	7683	7849	9277	12924	13303	13399	13420
pt 5616	7649	7760	7850	9957	12925	13318	13400	13421
5617	7658	7831	7851	11100	12928	13344	13401	13422
6950	7659	7832	7852	pt 12270	12929	13382	13402	13423
6951	7660	7833	7853	12730	12930	13383	13403	13424
				12731				

36996

24 September 1993]

GOVERNMENT GAZETTE, WA

5267

Schedule

Owner or Reputed Owner	Occupier or Reputed Occupier	Description	Area (approx.)
Rander Pty Ltd	Rander Pty Ltd	Portion of Nelson Location 3869 being part of the land contained in Certificate of Title Volume 1792 Folio 162.	7.9833 ha

Certified correct this 3rd day of September 1993.

GEORGE CASH, Minister for Lands.

Dated this 14th day of September 1993.

FRANCIS BURT, Governor in Executive Council.

LB707

File No. 1348/1991  
Ex. Co. No. 1468

**LOCAL GOVERNMENT ACT 1960  
PUBLIC WORKS ACT 1902  
LAND RESUMPTION**

**Road Extension—Summertime Road—Shire of Manjimup**

Notice is hereby given, and it is hereby declared, that pursuant to a resolution of the Shire of Manjimup passed at a meeting of the Council held on or about September 12, 1991 the several pieces or parcels of land described in the Schedule hereto, being all in the Nelson District have, in pursuance of the written approval and consent of His Excellency the Governor, acting by and with the advice of the Executive Council, dated the 14th day of September 1993, been set apart, taken or resumed for the purpose of the following public work, namely: Road Extension—Summertime Road—Shire of Manjimup.

And further notice is hereby given that the said pieces or parcels of land so set apart, taken, or resumed are marked off and more particularly described on Department of Land Administration Plan 18325 which may be inspected at the Department of Land Administration, Midland. The additional information contained in the Schedule after the land descriptions is to define locality only and in no way derogates from the Transfer of Land Act description. And it is hereby directed that the said lands shall vest in Her Majesty for the public work herein expressed, freed and discharged from all trusts, mortgages, charges, obligations, estates, interests, rights-of-way or other easements whatsoever.

Schedule

Owner or Reputed Owner	Occupier or Reputed Occupier	Description	Area (approx.)
Crown	National Parks and Nature Conservation Authority as Vestee	Portion of Class A Reserve 36996 for the purpose of National Park and Water.	5 807 m <sup>2</sup>

Certified correct this 3rd day of September 1993.

GEORGE CASH, Minister for Lands.

Dated this 14th day of September 1993.

FRANCIS BURT, Governor in Executive Council.

Road Dedication

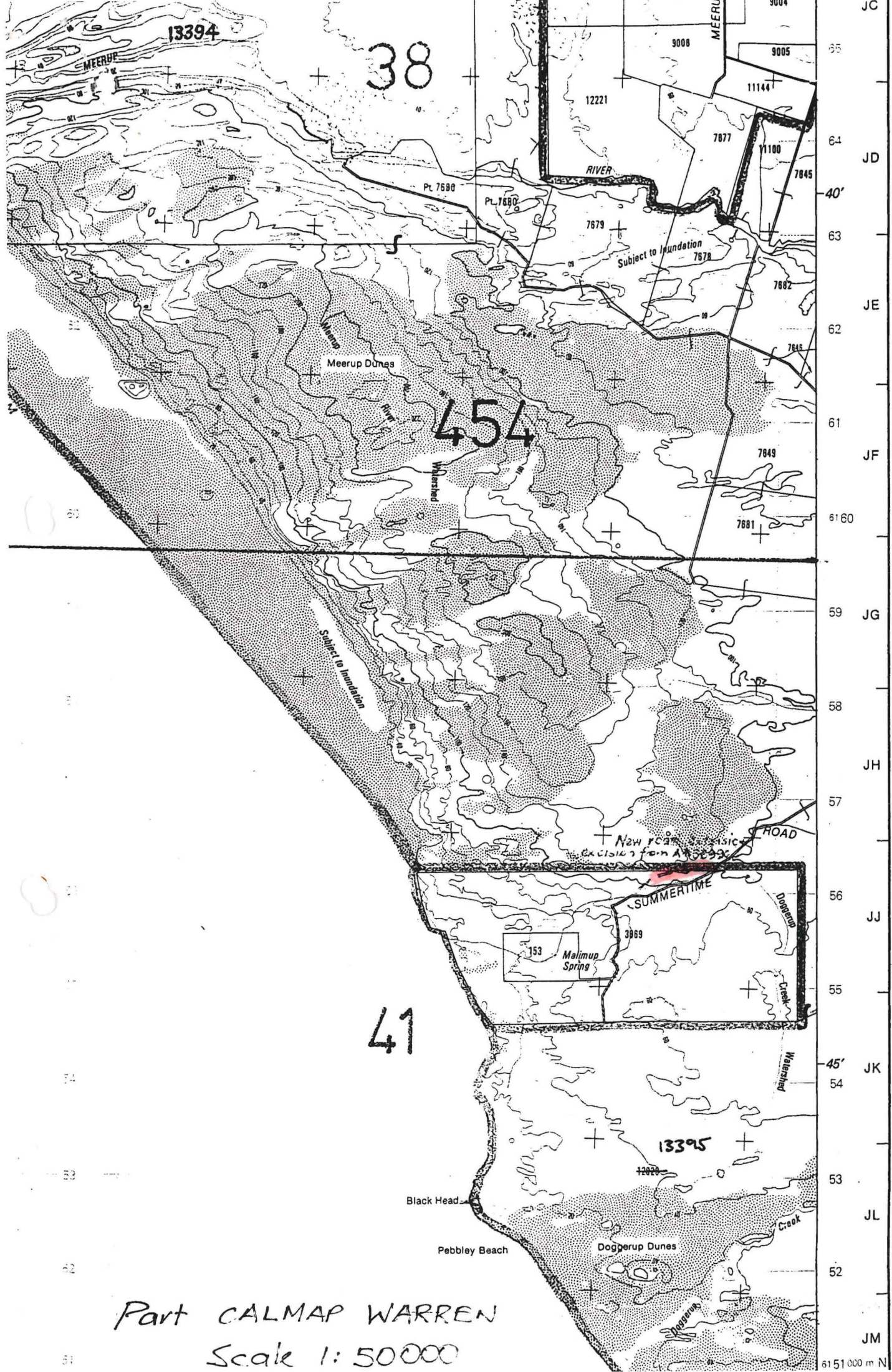
It is hereby notified that the Minister for Lands has approved, pursuant to section 288 of the Local Government Act, the dedication as public street the roads in the various Municipalities as described in the abovementioned resumption notices.

By Order of the Minister for Lands.

Dated this 24th day of September 1993.

A. SKINNER, Chief Executive.

CLERK, WOODVILLE - FYI



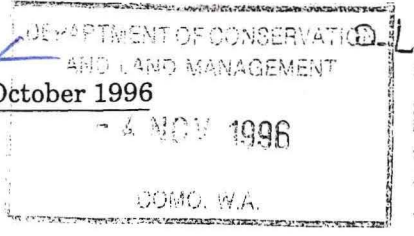
Part CALMAP WARREN  
 Scale 1:50000

JC  
 65  
 JD  
 64  
 40'  
 63  
 JE  
 62  
 61  
 JF  
 6160  
 59  
 JG  
 58  
 57  
 JH  
 56  
 JJ  
 55  
 45'  
 JK  
 54  
 53  
 JL  
 52  
 JM  
 6151 000 m N

71

10 CLERK - WOODVALE  
FOR YOUR INFORMATION

13



5644

GOVERNMENT GAZETTE, WA

[25 October 1996

LA404

FORFEITURES

Department of Land Administration

The following leases and licences together with all rights, title and interest therein have this day been forfeited to the Crown under the Land Act 1933 for the reasons stated.  
Dated 22 October 1996.

A. A. SKINNER, Chief Executive Officer.

Name; Lease or Licence No.; District; Reason; Corres No.; Plan.

- Murchison Region Aboriginal Corporation; 345B/2427; Yalgoo Lot 178; Non-Compliance with Conditions; 3705/953; CS D44024 BH44 (2) 21.25.
- Murchison Region Aboriginal Corporation; 345B/2426; Yalgoo Lot 176; Non-Compliance with Conditions; 3110/969; CS D44024 BH44 (2) 21.25.
- Belle-Sonne, Mirielle Helen; 345B/2054; Coomalbidgup Lot 26; Non-Compliance with Conditions; 2519/982; CF29 (2) 25.28.

LA701\*

RESERVES ACT 1996  
(No. 32 of 1996)

It is hereby notified that pursuant to the above Act assented to on 19 September, 1996, the undermentioned reserves have been dealt with in the manner described—

- Class 'A' Reserve 4561 (Canning Locations 3469 and 3597) "Parklands" is amended by the inclusion of Location 3895 on Diagram 91837 with its area being increased to 499.4387 hectares.  
Public Plan: BG33(2) 24.40  
DOLA File: 2295/897 V3
- The classification of the following reserves have been downgraded from Class 'A' to Class 'C'—
  - Reserve 23243 (Nelson Location 2931) "Hallsite".  
Public Plan: BH29(2) 14.18  
DOLA File: 3080/904
  - Reserve 24679 (Borden Lot 45) "Camping and Caravan Park".  
Public Plan: BK28(2) 33.29  
DOLA File: 2766/933
  - Reserve 24943 (Plantagenet Location 6172) "Preservation of Flora".  
Public Plan: BJ27(10) 8.2  
DOLA File: 1050/958
- Class 'A' Reserve 15927 (Bunbury Lots 380, 358, 384, 397, 451, 452 and 575) "Recreation and Parking" is amended to exclude Lot 759 on Diagram 91861 with its area being decreased to about 8.1002 hectares.  
Public Plans: BG30(2) 01.32 & 02.32  
DOLA File: 4651/903 V4.
- Class 'A' Reserve 23000 (Wellington Locations 4583 and 5174) "Travellers Stopping Place and Caravan Park" is amended by the inclusion of Location 5629 on Diagram 90968 with its area being increased to 136.5891 hectares.  
Public Plans: BF30(10) 8.4 & 8.5  
DOLA File: 579/945
- Class 'C' Reserve 36196 (Tenterden AA Lot 105) "Gravel" is cancelled.
  - Class 'A' Reserve 2218 (Tenterden AA Lot 17) "Conservation of Flora and Fauna" is amended by the inclusion of AA Lot 105 with its area being increased to 55.7512 hectares.  
Public Plan: Tenterden (2) NW  
DOLA File: 2978/891
- Class 'A' Reserve 36996 (Nelson District) "National Park and Water" is amended by:-
  - the excision of that area now contained in Locations 13471 to 13474 inclusive as depicted on Reserve Plan 431.
  - the inclusion of Location 13481 as depicted on Miscellaneous Diagram 525.

The reserve being redescribed to comprise Locations 3706, 4418, 5222, 5223, 5224, 5225, 5239, 5472, 5603, 6464, 6950, 6951, 6955, 6962, 6964, 6965, 6966, 6967, 6968, 7202, 7203, 7562, 7594, 7612, 7636, 7640, 7645, 7646, 7649, 7658, 7659, 7660, 7661, 7662, 7669, 7670, 7671, 7672, 7673, 7674, 7675, 7676, 7678, 7679, 7680, 7681, 7682, 7683, 7760, 7831, 7832, 7833, 7834, 7835, 7836, 7837, 7838, 7839, 7840, 7841, 7842, 7843, 7844, 7845, 7846, 7847, 7848, 7849, 7850, 7851, 7852, 7853, 7854, 7855, 7856, 7857, 7858, 7859, 7860, 7861, 7862, 7863, 7864, 7898, 7899, 8288, 9277, 9957, 11100, 12730, 12731, 12873, 12887, 12891, 12896, 12901, 12902, 12903, 12910, 12917, 12918, 12919, 12920, 12921, 12922, 12923, 12924, 12925, 12926, 12927, 12928, 12929, 12930, 12932, 12933, 12934, 12936, 12937, 12938, 12939, 12940, 12941, 12942, 12953, 13057, 13058, 13078, 13324, 13370, 13382, 13383, 13384, 13385, 13386, 13387,

17/11/96  
6-11-96  
Mr. John for your litho pls.  
MR



13388, 13389, 13390, 13391, 13392, 13393, 13394, 13395, 13396, 13397, 13398, 13399, 13400, 13401, 13402, 13403, 13404, 13405, 13406, 13407, 13408, 13409, 13410, 13411, 13412, 13413, 13414, 13415, 13416, 13417, 13418, 13420, 13421, 13422, 13423, 13424, 13425, 13426, 13427, 13428, 13432, 13463 and 13481 as shown bordered red on Reserve Plan 367 (Sheets 1 to 6 inclusive) and Miscellaneous Diagrams 309, 316 and 525 and its area be established at about 115447 hectares.

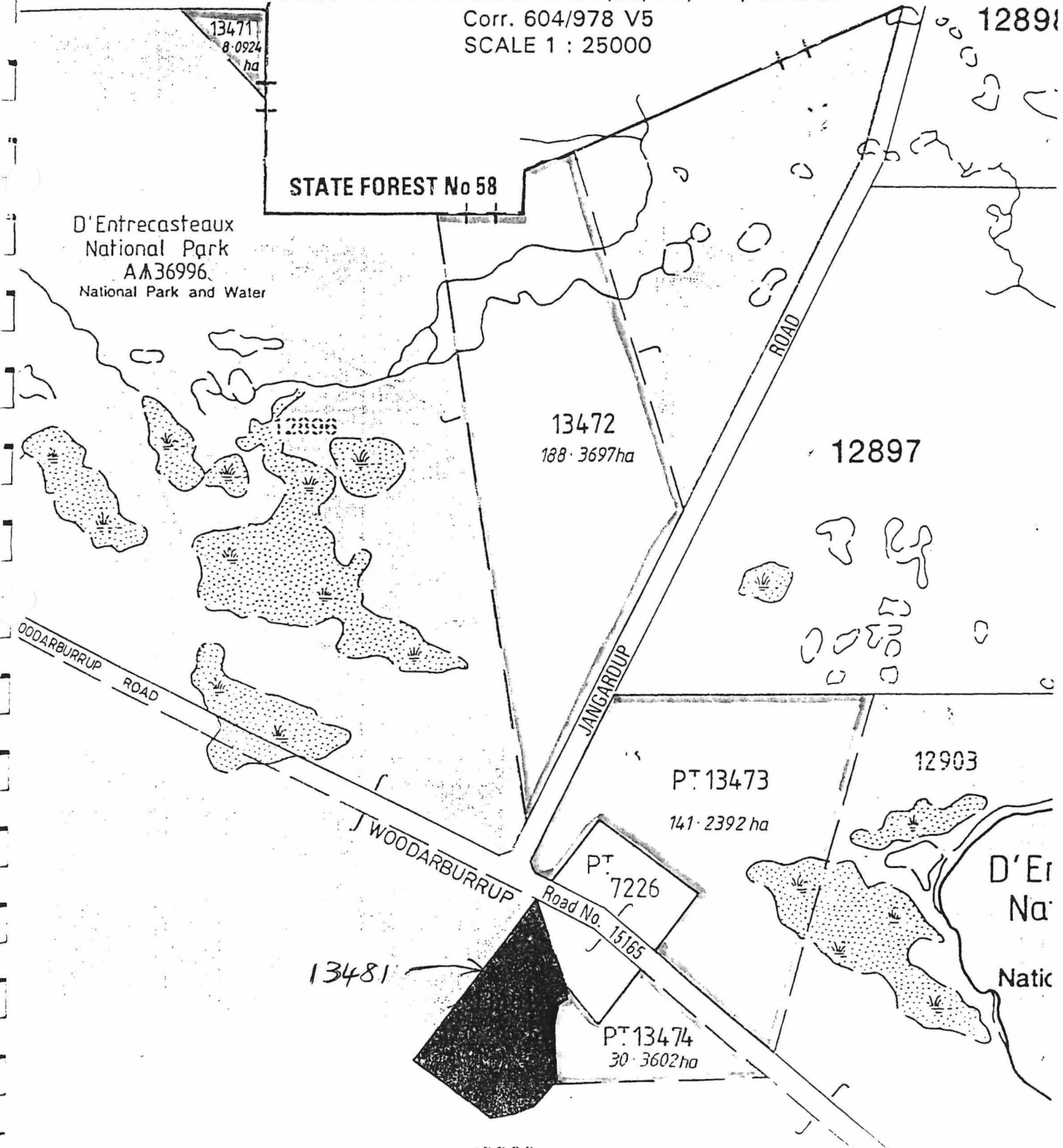
DOLA File: 604/978

7. (i) Class 'C' Reserve 43182 (Canning Location 3893) "Conservation of Flora and Fauna" is cancelled.
- (ii) Class 'A' Reserve 23076 (Canning Location 3766) "Conservation of Flora and Fauna" is amended by the inclusion of Locations 3893 and 4107 (formerly Lot 35 on Plan 4742) and its area being increased to 21.9901 hectares.  
Public Plans: BG34(2) 23.21, 24.21 and 24.22  
DOLA File: 1930/950.
8. (i) Class 'A' Reserve 34772 (Meenaar Lot 71) "Conservation of Flora and Fauna" is cancelled.
- (ii) Class 'A' Reserve 29977 (Avon Location 28608) "Conservation of Flora and Fauna" is amended by the inclusion of Meenaar Lot 71 and its area being increased to 94.1208 hectares.  
Public Plans: Meenaar Townsite  
DOLA File: 3592/968
9. (i) Class 'C' Reserve 18625 (Bowgada Lot 52) "School Site" is cancelled.
- (ii) Class 'A' Reserve 29745 (Bowgada Lot 59) "Conservation of Flora and Fauna" is amended by the inclusion of Lot 52 and its area being increased to 152.2472 hectares.  
Public Plan: BG41 (2) 30.35  
DOLA File: 2046/969
10. Class 'A' Reserve 15162 (Plantagenet District) "Parklands" is amended by:-
  - (a) the excision of that area now contained in Location 7761.
  - (b) redescribing the reserve to comprise Plantagenet Location 6923 on Land Administration Plan 18597 and of its area being reduced to 58.0970 hectares.  
Public Plans: Mount Barker (25) SE and BJ27(10) 8.2  
DOLA File: 8777/913
11. Class 'A' Reserve 18325 (Swan Locations 3301, 3762, 5563, 7727 and 7583) "Recreation" is amended by the excision of the area now comprised on Location 11985 and its area being reduced to 161.5586 hectares.  
Public Plans: BG34(2) 14.28 and 14.29  
DOLA File: 5192/896 V7
12. Class 'A' Reserve 25039 (Emu Hill Lots 1 to 14 inclusive, 16, 17, 19 to 63 inclusive, 66, 67, 71, 72 and 73) "Conservation of Flora and Fauna" is amended by—
  - (a) the inclusion of Lot 74 (formerly Lot 15 on Plan 1711),
  - (b) by recalculation of its area so that the reserve comprises 61.7839 hectares.  
Public Plan: Emu Hill Townsite  
DOLA File: 2318/993
13. Class 'A' Reserve 39962 (Hammersley Lots 16 and 17, North Beach Lots 709 and 710 and Waterman Lots 4 and 6) "Conservation of Flora and Fauna, and Passive Recreation" is amended by the inclusion of North Beach Lot 715 and its area being increased to 95.9144 hectares.  
Public Plan: BG34(2) 7.35  
DOLA File: 3129/977 V4
14. (i) Class 'A' Reserve 35291 (Avon Location 28572) "Conservation of Flora and Fauna" is cancelled.
- (ii) Class 'A' Reserve 33254 (Avon Location 29024) "Conservation of Flora and Fauna" is amended by the inclusion of Location 28572 and its area being increased to 14.1015 hectares.  
Public Plans: Northam (25) SW and Toodyay (25) SE  
DOLA File: 544/972
15. Class 'A' Reserve 38924 (Avon Locations 28805 and 28937) "Conservation of Flora and Fauna" is amended by the inclusion of Location 29096 on Diagram 91497 and its area being increased to 931.7567 hectares.  
Public Plan: Toodyay (25) SW, BG35(10) 8.3 and 8.4  
DOLA File: 911/984 V2
16. (i) Class 'A' Reserve 34606 (Milyuga Location 13) "Conservation of Flora and Fauna" is amended by the excision of that area now comprised in Milyuga Location 14 on Reserve Diagram 1303 and of its area being reduced to about 1,842,864 hectares.  
Public Plan: Rawlinson 1:500,000  
DOLA File: 1687/976
- (ii) Class 'A' Reserve 29452 (Milyuga District) "Use and Benefit of Aboriginal Inhabitants" is amended to comprise Milyuga Location 14 on Reserve Diagram 1303 and of its area being increased to about 20,566 hectares.  
Public Plan: Rawlinson 1:500,000  
DOLA File: 1397/968

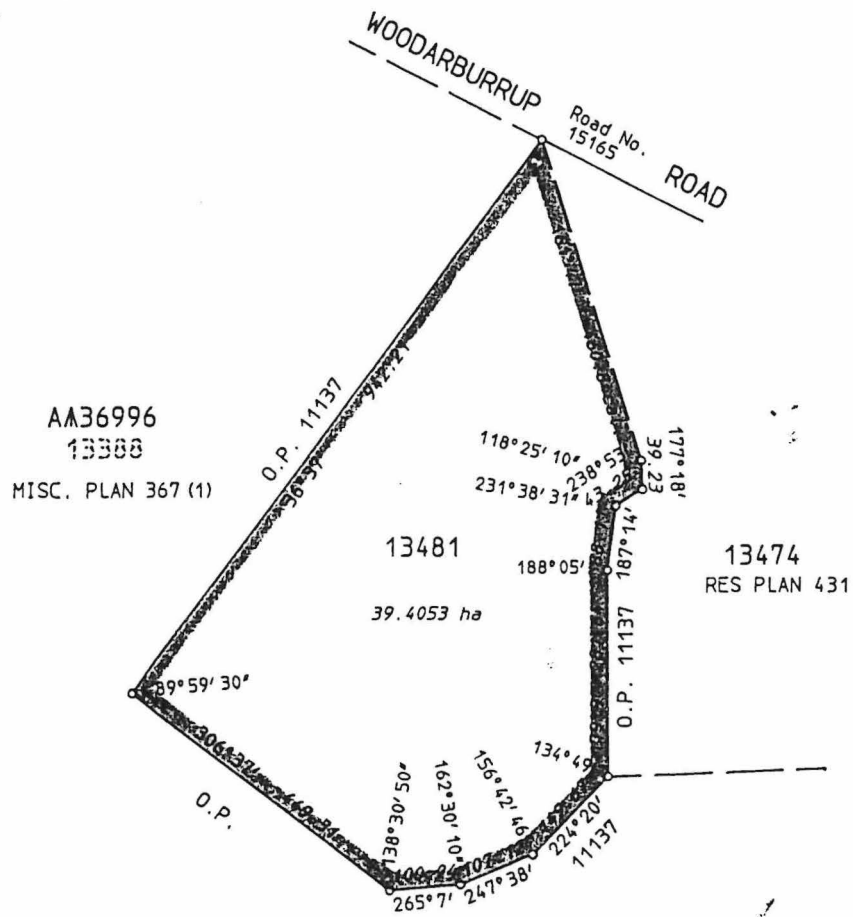


1. AMENDMENT OF CLASS "A" RESERVE 36996 TO EXCLUDE NELSON LOCATIONS 13471 AND 13472 AND PORTION OF EACH OF NELSON LOCATIONS 13473 AND 13474, ALL COLOURED BLUE.
2. AMENDMENT OF CLASS "A" RESERVE 36996 TO INCLUDE NELSON LOCATION 13481, COLOURED DARK RED.

NELSON DISTRICT  
 PUBLIC PLANS : LAKE JASPER (25) NE, NW, SE & SW  
 Corr. 604/978 V5  
 SCALE 1 : 25000



7A  
7B



AM36996  
13388  
MISC. PLAN 367 (1)

13474  
RES PLAN 431

13481  
39.4053 ha



MISCELLANEOUS DIAGRAM 525

Certified .....  
Authorized Land Officer

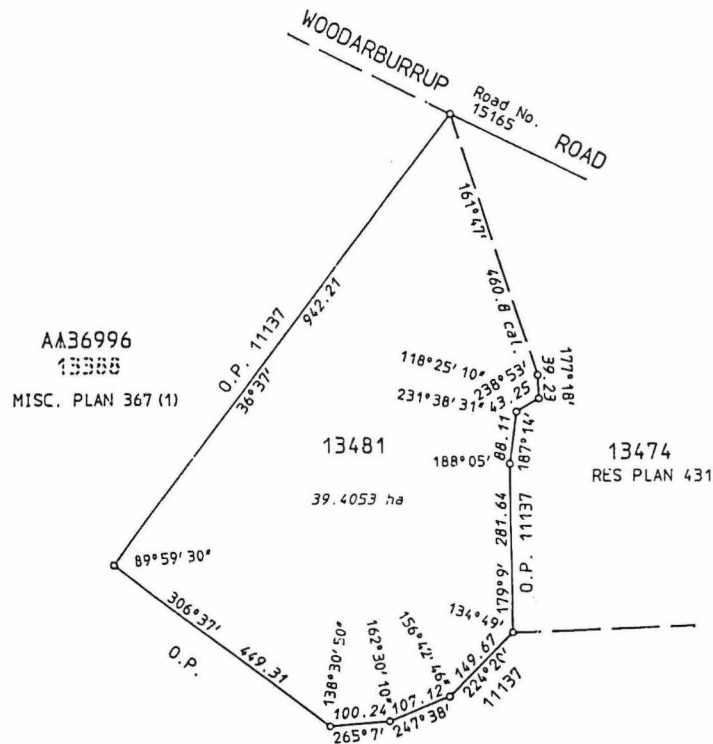


LOCATION 13481 (PT. AM36996)		FILE No. 604/1978
		SCALE 1:7500 All measurements in metres
DISTRICT, NELSON	Gazetted _____ Page _____	
Public Plan LAKE JASPER (25) SE	Recorded on Public Plan _____	
Reference CALC. BK. P.J. PEARCE 1 Pages 1-4	Registered P.J. PEARCE Date 9/5/1995 For Manager Statutory Services Survey Index Plan LAKE JASPER (25) SE	
Prepared by P.J. PEARCE Date 11/5/1995	DEPT. OF LAND ADMINISTRATION MISCELLANEOUS DIAGRAM No. 525	
Checked <i>m. dallas</i> Date 16.8.95 EXEC. MIN. 6/91		
Approved _____ Date _____		
Manager Cadastral Mapping		
SUBJECT TO SURVEY		
AMENDMENTS		
Gazette	Page	Initials

730.  
76

SUBJECT TO SURVEY  
Not for Alienation Purposes

Calculated dimensions shown hereon are SUBJECT TO SURVEY  
Includes Pt. Location 7226  
Supersedes Pt. O.P. B524

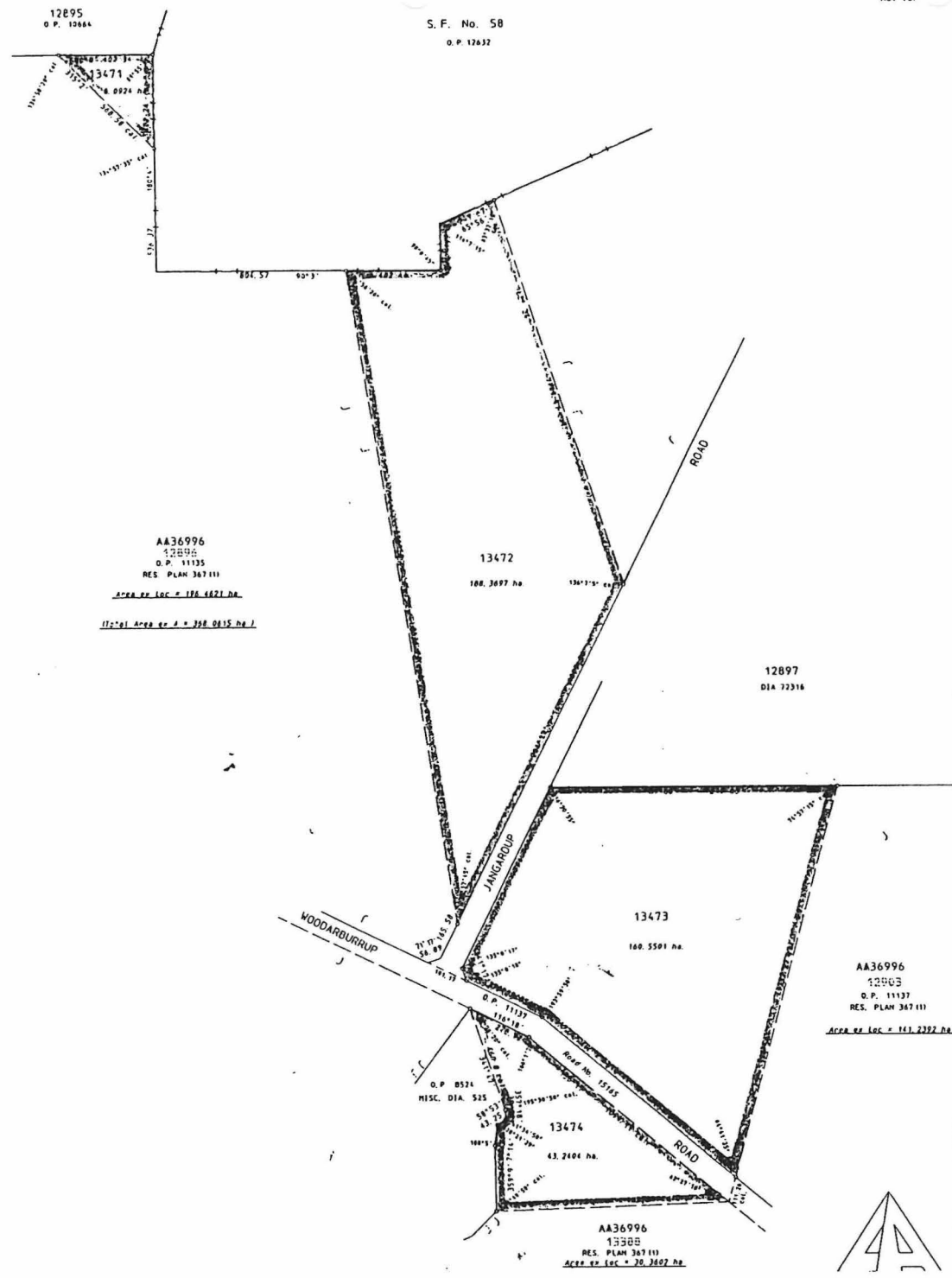


MISCELLANEOUS DIAGRAM 525

Certified .....  
Authorized Land Officer



LOCATION 13481 (PT. AA36996)		FILE No. 604/1978	
		SCALE 1:7500 All measurements in metres	
DISTRICT. NELSON		Gazetted _____ Page _____	
Public Plan LAKE JASPER (25) SE		Recorded on Public Plan _____	
Reference CALC. BK. P.J. PEARCE 1 Pages 1-4		Registered P.J. PEARCE Date 9/5/1995	
Prepared by P.J. PEARCE Date 11/5/1995		For Manager Statutory Services	
Checked <u>M. Dallas</u> Date <u>16.8.95</u>		Survey Index Plan LAKE JASPER (25) SE	
Approved _____ Date _____		DEPT. OF LAND ADMINISTRATION	
Manager Cadastral Mapping		MISCELLANEOUS DIAGRAM No. 525	
SUBJECT TO SURVEY			
AMENDMENTS			
Gazette	Page	Initials	



12895  
O.P. 10664

S.F. No. 58  
O.P. 12632

AA36996  
12896  
O.P. 11135  
RES. PLAN 367 111

Area of Loc = 128 6821 ha  
 Total Area of A = 398 0415 ha J

13472  
108 3697 ha

12897  
DIA 72316

13473  
160 5501 ha

AA36996  
12893  
O.P. 11137  
RES. PLAN 367 111

Area of Loc = 141 2292 ha

O.P. 8524  
MISC. DIA. 525

13474  
43 2404 ha

AA36996  
13388  
RES. PLAN 367 111  
Area of Loc = 20 2487 ha



RESERVE PLAN 431

Certified .....  
Authorized Land Officer

NELSON LOCATIONS 13471, 13472, 13473 & 13474 CREATED ON THIS PLAN

RESERVE No. TOTAL AREA 400.2526 ha Purpose Conservation and Resource Management		FILE No.
DISTRICT NELSON		SCALE 1:10 000 All measurements in metres
Public Plan LIME JASPER 1951 ME, 10 & 11 Prepared by P. S. PEARCE Checked by P. S. PEARCE Approved by P. S. PEARCE	SUBJECT TO SURVEY AMENDMENTS	Registered P. S. PEARCE Per Manager, Survey Services Survey Units Plan
Page 1-4 Date 16/04/1995 Date 16.6.95	Gazette Page Initials	Date 16/04/1995
DEPT. OF LAND ADMINISTRATION RESERVE PLAN No		

RESERVE PLAN NO. 431 26

128

**Query Criteria**

Crown Reserve No. = 36996

**Special Comments**

Crown Reserve **36996**

Class: **A**

Name: **D'Entrecasteaux National Park**

Name Approval: **Gazetted**

Tenure: **National Park** Area: 115,447.0 ha

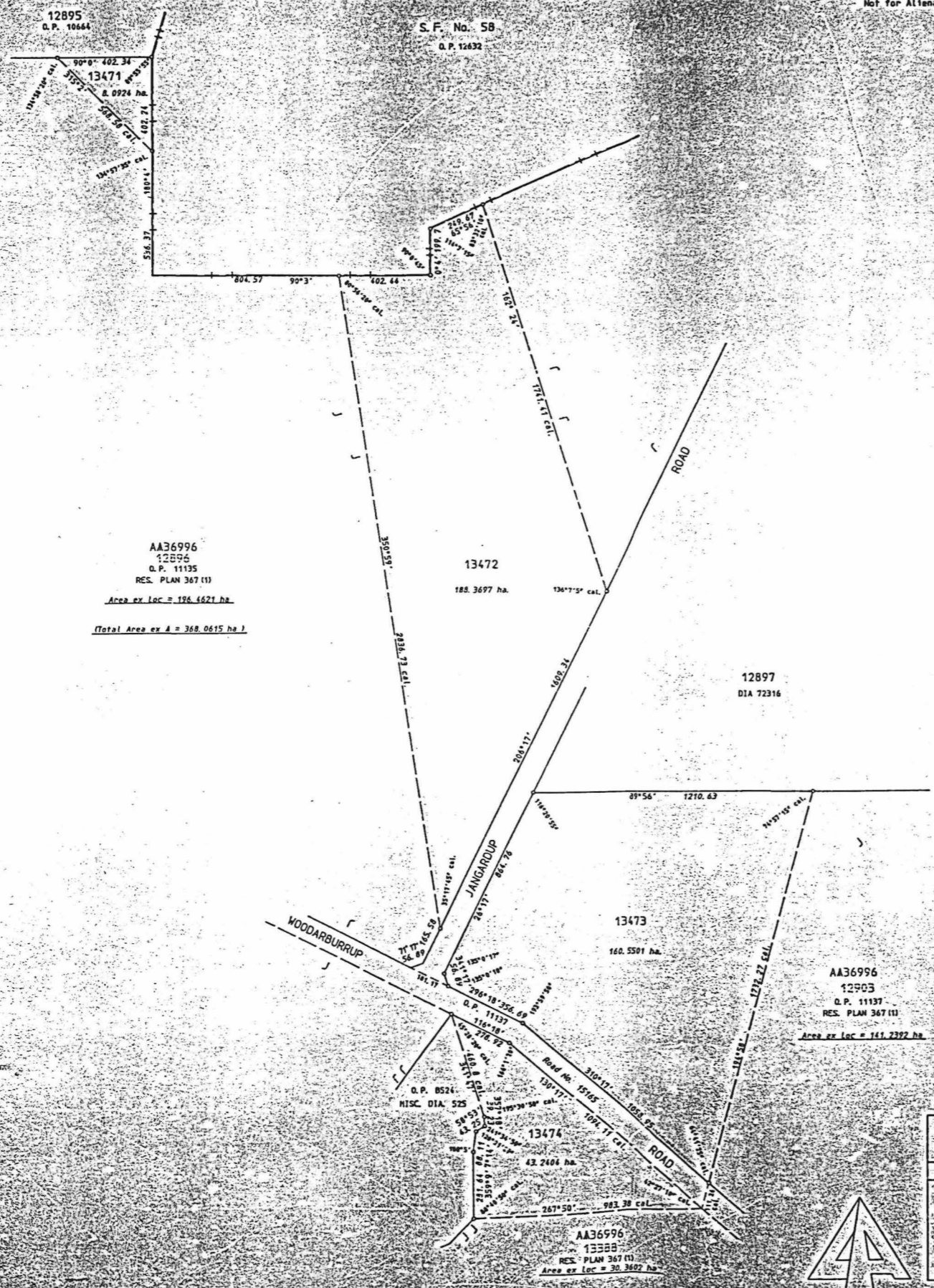
Purpose: **National Park And Water**

Vesting: **National Parks And Nature Conservation Authority**

<u>Date</u>	<u>Gazettal Action</u>	<u>Description</u>
25-Oct-1996	Area	Abt 115447.0000 (Pursuant To The Reserves Act 1996 No. 32 Of 1996).
25-Oct-1996	Location	Nelson Locs 3706, 4418, 5222 - 5225 (Inc), 5239, 5472, 5603, 6464, 6950, 6951, 6955, 6962, 6964 - 6968 Inc. , 7202, 7203, 7562, 7594, 7612, 7636, 7640, 7645, 7646, 7649, 7658 - 7662(Inc), 7669 - 7676 (Inc), 7678 - 7683(Inc), 7760, 7831
25-Oct-1996	Survey No.	Misc. Dia:525, Res Plan 367, Misc. Dia:309, 316, 525
24-Sep-1993	Area	114565.93 (Reduced By Road Extension)
29-Jan-1993	Area	114566.5135
29-Jan-1993	Formerly	5472, 6950, 6951, 6955, 6962, Ptn6963, 6964 - 6968(Inc), 7640, 7645, 7646, 7649, 7658 - 7662(Inc), 7669 - 7676(Inc), 7678, 7679, Ptn7680, 7681 - 7683(Inc), 9277, 11100, 12731
29-Jan-1993	Previous Locations	Ptn Loc 6963, Loc 5600, 5602 (Reserves Act 1992)
29-Jan-1993	Public Plan	Charnwood Sw, Lake Jasper Ne, Se, Nw, Sw, Meenup Nw, Wainbub Nw, Sw, Ne, SE 1:25 000, Deep River SW & Nw, Gardiner River Nw, Ne, Pike Ne, Saddle Island Nw.
12-Mar-1982	Act Proclaimed	Under Petroleum Act 1967
28-Nov-1980	Area	Abt 34895.0000
28-Nov-1980	Class	C
28-Nov-1980	DOLA File	604/78, V2
28-Nov-1980	Name	D'Entrecasteaux National Park
28-Nov-1980	Purpose	National Park & Water
28-Nov-1980	Street	Scott Rd
28-Nov-1980	Vesting	National Parks Authority Of W A
28-Nov-1980	Original Gazettal	

SUBJECT TO SURVEY  
Not for Alienation Purposes

Calculated dimensions shown hereon are SUBJECT TO SURVEY  
Includes Pt. Locations 7224, 12894, 12903 & 13388  
Supersedes Pt. O.P.'s 8524, 11135, 11137 & Pt. Res. Plan 367



AA36996  
12896  
O.P. 11135  
RES. PLAN 367 (1)  
Area ex loc = 126.4621 ha  
Total Area ex A = 368.0615 ha.1

AA36996  
12903  
O.P. 11137  
RES. PLAN 367 (1)  
Area ex loc = 141.2392 ha

AA36996  
13388  
RES. PLAN 367 (1)  
Area ex loc = 30.3602 ha



RESERVE PLAN 431  
Certified  
Authorized Land Officer

NELSON LOCATIONS 13471, 13472, 13473 & 13474 CREATED ON THIS PLAN

RESERVE No. TOTAL AREA 400.2526 ha		FILE No.
Purpose Conservation and Resource Management		SCALE 1:10 000
DISTRICT: NELSON		RESERVE PLAN No. 431
SUBJECT TO SURVEY		DEPT. OF LAND ADMINISTRATION
AMENDMENTS		RESERVE PLAN No. 431
Goetze	Page	Initials
Checked	Date	Approved
Approved	Date	Approved
Manager Cultural Heritage	Date	Approved