

- 306
11. (i) The following reserves on Public Plan: Rockingham NE 1:25,000 are cancelled²²
- (a) Class "C" Reserve 42238 (Cockburn Sound Locations 4020 and 4021) "Conservation of Flora and Fauna".
 - (b) Class "A" Reserve 31893 (Cockburn Sound Location 2992) "Conservation of Flora and Fauna".
 - (c) Class "C" Reserve 42237 (Cockburn Sound Location 4019) "Conservation of Flora and Fauna".
 - (d) Class "A" Reserve 31894 (Cockburn Sound Location 2988) "Conservation of Flora and Fauna".
- (ii) Class "A" Reserve 24204 (Cockburn Sound Location 3050) "Conservation of Flora and Fauna" is amended to include Locations 4020, 4021, 2992, 4019 and 2988 with its area being increased to 4.0598 hectares.
Public Plan: Rockingham NE 1:25,000 and Peel (2) 03.29. File 929/928.
12. (i) Class "C" Reserve 42165 (Windell Location 94) "Conservation Park" is cancelled.
Public Plan: Turee Creek 1:250,000.
- (ii) Class "C" Reserve 41864 (Windell Location 128) "Conservation Park" is cancelled.
Public Plans: Newman and Roy Mill 1:250,000.
- (iii) Class "A" Reserve 30082 (Windell Locations 126, 127 and 131) "National Park" is amended to include Locations 128, 94 and 133 on Miscellaneous Diagram 337, with its area being increased to about 627444.7856 hectares.
Public Plans: Mt Bruce, Roy Hill, Newman and Turee Creek 1:250,000h. File 3177/48 V6.
13. Class "A" Reserve 24029 (Swan Location 5543) "Kindergarten, Infant Health Clinic, Children's Playground and Park" is amended by the excision of that area now comprised in Location 11682 on Diagram 90839 with its area being reduced to 7620 square metres.
Public Plan: Perth BG34 (2) 09.25. File 162/54.
14. (i) Class "C" Reserve 29149 (Melbourne District) "National Park" is cancelled.
Public Plan: Cervantes 1:50,000.
- (ii) Class "C" Reserve 28393 (Melbourne Locations 4056, 4126 and 4127) "Preservation of Natural Formations (Pinnacles)" is cancelled.
Public Plan: Cervantes 1:50,000.
- (iii) Class "A" Reserve 24522 (Melbourne District) "National Park and Water" is amended to comprise Locations 3953, 4048, 4056, 4126, 4127 and 4145 as shown on Reserve Plan 380 with its area being increased to 18 318.5304 hectares.
Public Plan: Cervantes and Hill River 1:50,000 and Cervantes Regional File 2208/955V3.
15. (i) Class "C" Reserve 19413 (Murray Location 549) "Conservation of Flora and Fauna" is cancelled.
- (ii) Class "A" Reserve 40476 (Murray Location 1846) "Conservation of Flora and Fauna" is amended to include Location 549 with its area being increased to 69.6987 hectares.
Public Plans: Wellard SE, Jarrahdale SW, Dwellingup NW and Pinjarra NE 1:25,000. File 570/988.
16. The purpose of Class "A" Reserve 25243 (Kojonup Location 8400) is changed to "Landscape Protection".
Public Plan: Wagin SE and Woodanilling NE 1:25,000. File 8790/902.
17. Class "A" Reserve 16412 (Avon District) "Conservation of Flora and Fauna" is amended to comprise Location 29067 on Diagram 90711 in lieu of Location 21547 with its area being increased to 65.4857 hectares.
Public Plan: Quajabin NW 1:25,000. File 4225/915.
18. Class "A" Reserve 900 (Victoria Locations 11144, 11275, 11276 and 11323) "Preservation of Natural Features" is amended by—
- (a) the revocation of the vesting held in the Mingenew Shire Council;
 - (b) the inclusion of Location 12004 with its area being increased to 753.8343 hectares.
 - (c) its purpose being changed to "Conservation Park".
- Reserve 900 is automatically vested in The National Parks and Nature Conservation Authority pursuant to the CALM Act 1984.
Public Plan: Tardun 1:50,000. File 532/967.
19. The purpose of Class "A" Reserve 15061 (Kojonup Location 7175) is changed to "Conservation of Flora and Fauna". Reserve 15061 is automatically vested in the National Parks and Nature Conservation Authority pursuant to the CALM Act 1984.
Public Plans: Boscabel SW and SE 1:25,000's File 611/13.

CLERK, WOODVALE - F.X.I.

CLAUSE 20

Reserve No. 40476 in the Shire of Murray

25 20. (1) Reserve No. 19413, classified as of Class C, containing 38.630 8 hectares, set apart for "Conservation of Flora and Fauna" and vested in the Authority, is cancelled.

(2) Reserve No. 40476, classified as of Class A, containing 31.067 9 hectares, set apart for "Conservation of Flora and Fauna" and vested in the Authority, is amended by including the land referred to in subsection (1) so that the reserve is comprised of an area of 69.698 7 hectares, being Murray Locations 1846 and
5 549.

CLAUSE 20

Class "C" Reserve 19413 and Class "A" Reserve 40476 are both set aside for the purpose "Conservation of Flora and Fauna" and vested in the National Parks and Nature Conservation Authority. The reserves are contiguous and situated north east of North Dandalup Townsite.

The Department of Conservation and Land Management has requested that these reserves be amalgamated and both DOLA and the Department of Minerals and Energy have no objection to this proposal.

Amalgamation will require cancellation of Class "C" Reserve 19413 and its inclusion within Class "A" Reserve 40476. Parliamentary approval is necessary for the latter action.

Electoral District of Murray
South West Electoral Region
Shire of Murray



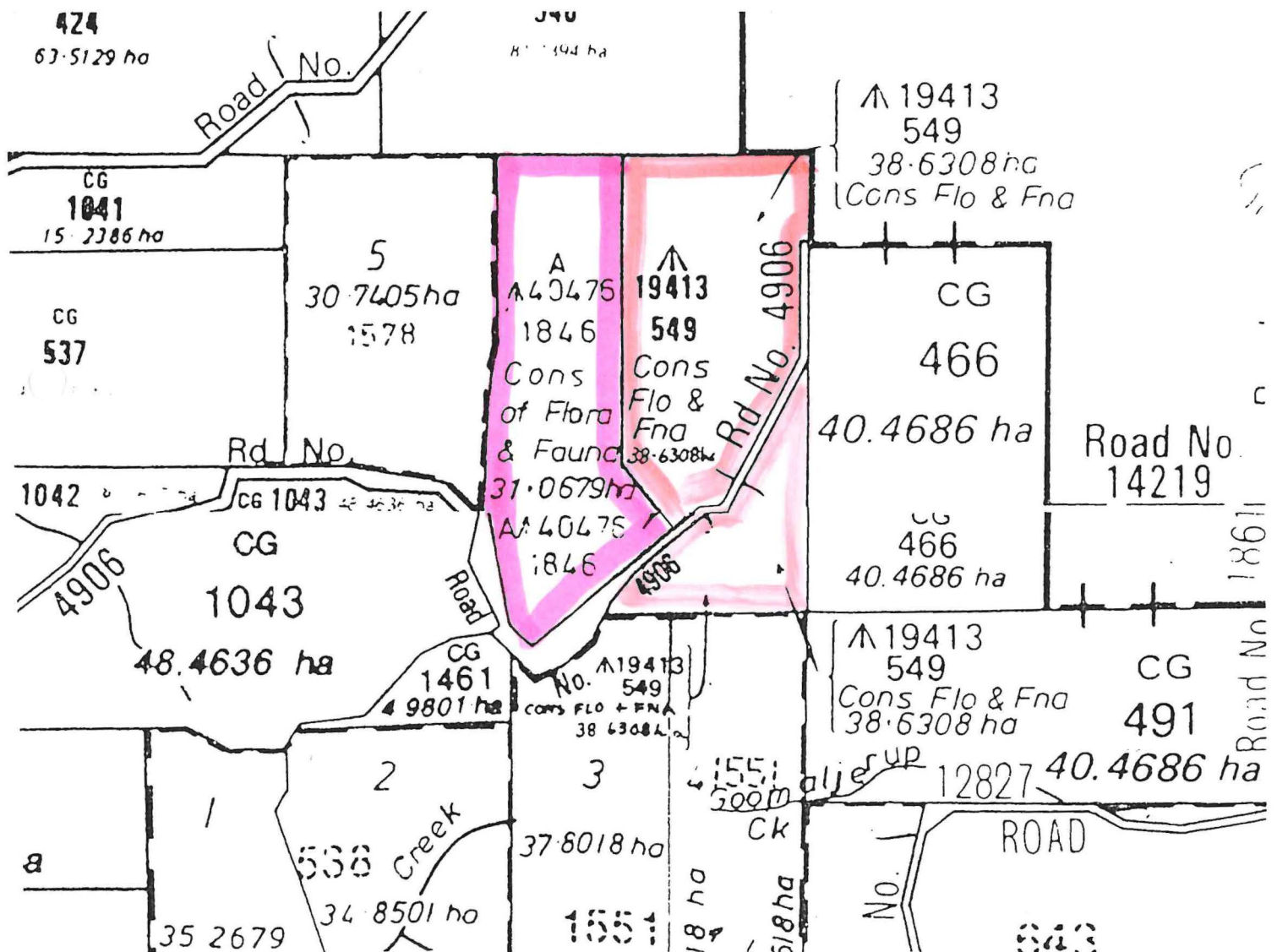
INCLUSION OF MURRAY LOCATION 549 INTO AΛ40476

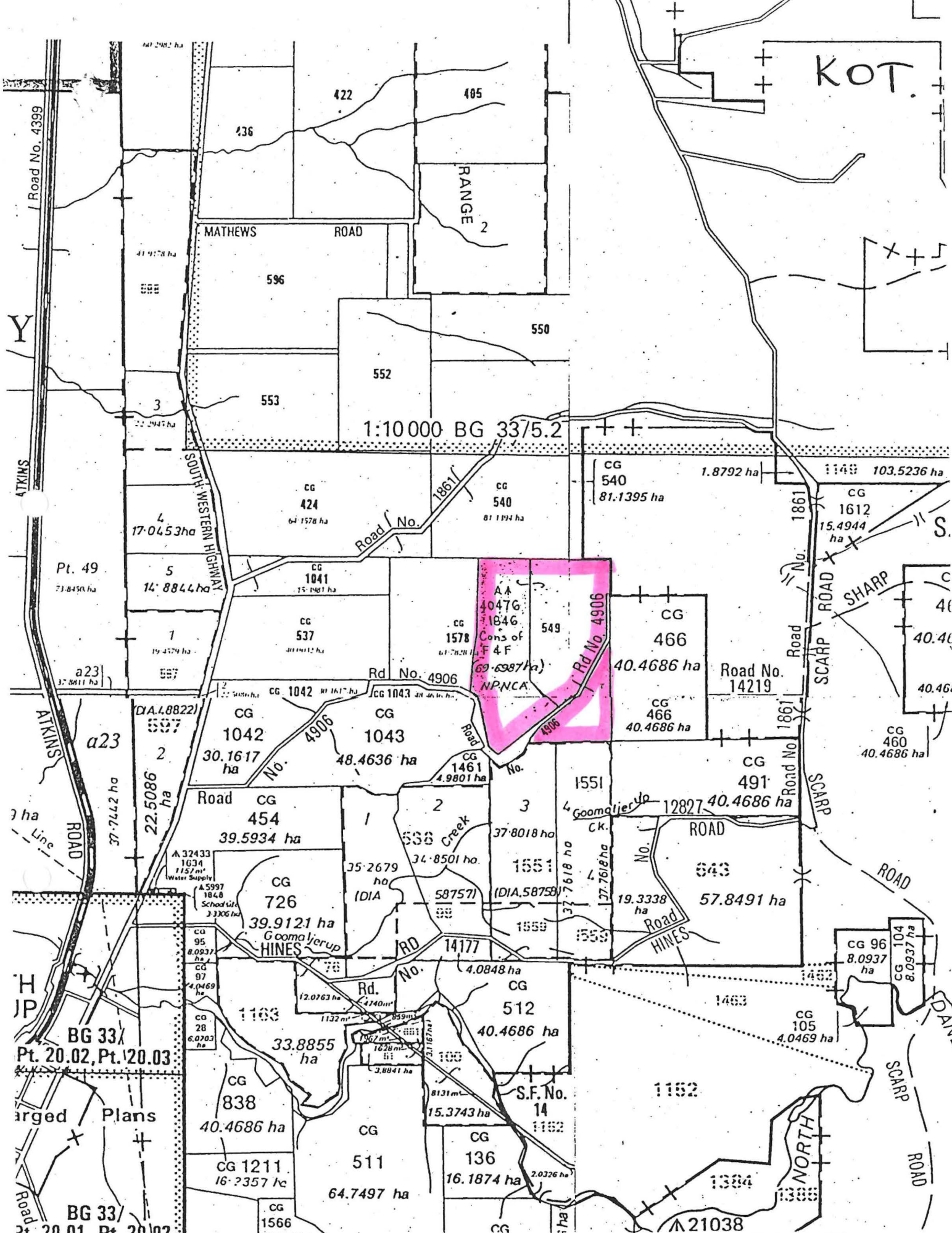
MURRAY DISTRICT

PUBLIC PLANS :- WELLARD S.E., JARRAHDALÉ S.W., DWELLINGUP N.W.
AND PINJARRA N.E.

CORR 570/988

BNS





Part Plans Wellard SE(2033-11 SE), Jarrahdale SW(2133-111 SW)
 Pinjarra NW(2032-1 NE) & Dwellingup NW(2132-1V N)
 Scale 1: 25 000