

RESERVE ACTION SHEET - CONSERVATION RESERVES

TOOLONGA NATURE RESERVE (C↑40628)

Shire of Shark Bay

REASON FOR ACTION

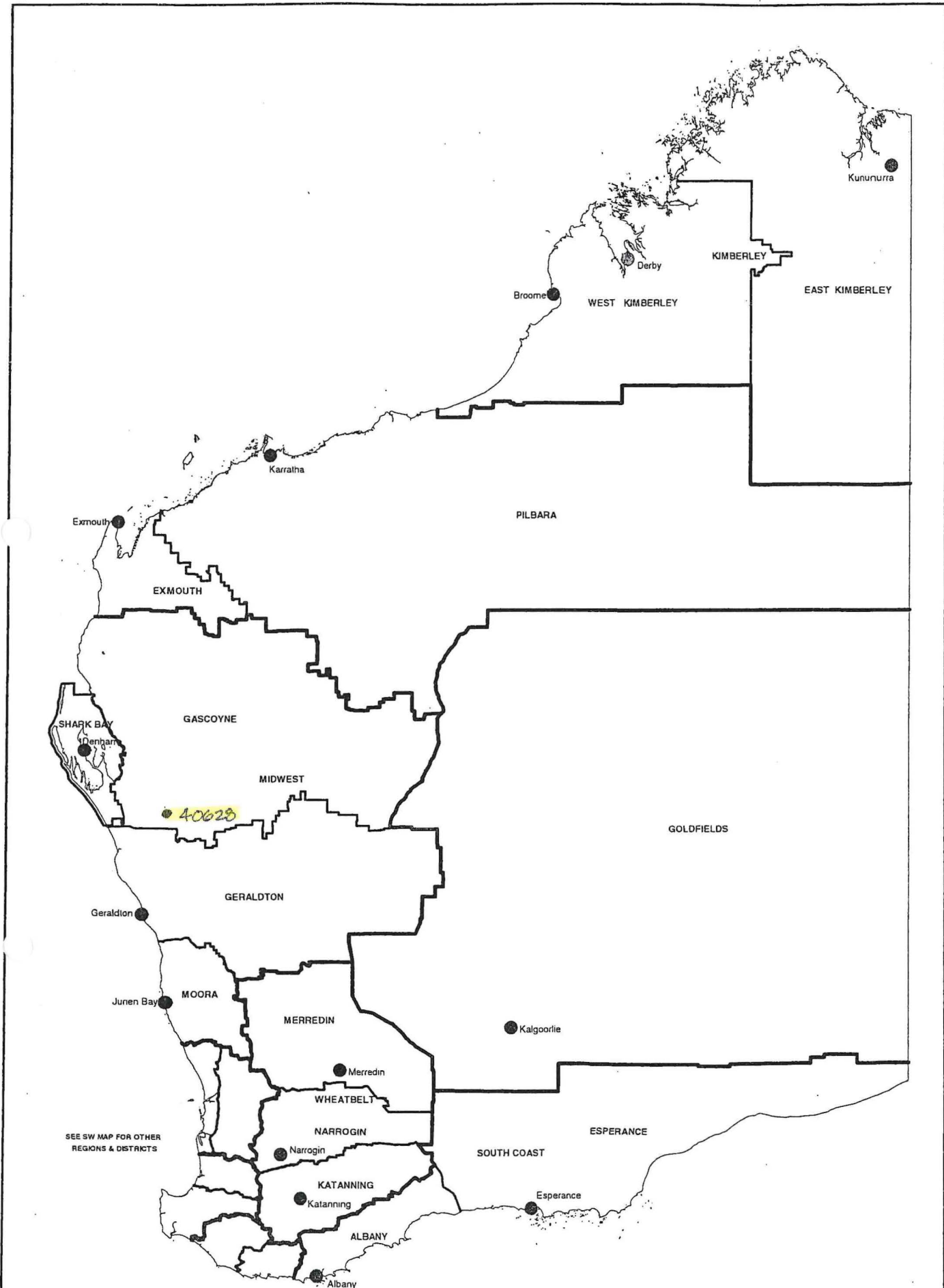
Excision of 863.349 ha from Toolonga Nature Reserve for the Dampier to Bunbury Natural Gas Pipeline (DBNGP) Corridor. Toolonga Nature Reserve (C↑40628) is a class C reserve vested in the Conservation Commission for the purpose "Conservation of Flora and Fauna".

Amended Area: 404,557.66 ha

Portion of the reserve was already within the DBNGP corridor and had an existing easement to the DBNGP Land Access Minister registered over the area. The excision has expanded the area of the existing corridor, and the rights protected by the easement have been redefined and replaced by State Corridor Rights as described in section 28 of the Dampier to Bunbury Pipeline Act.

- Date of amendment: 2 September 2002 (p. 285)
- Plans at Folios: pp. 286-291
- Recommended IUCN classification: 1a

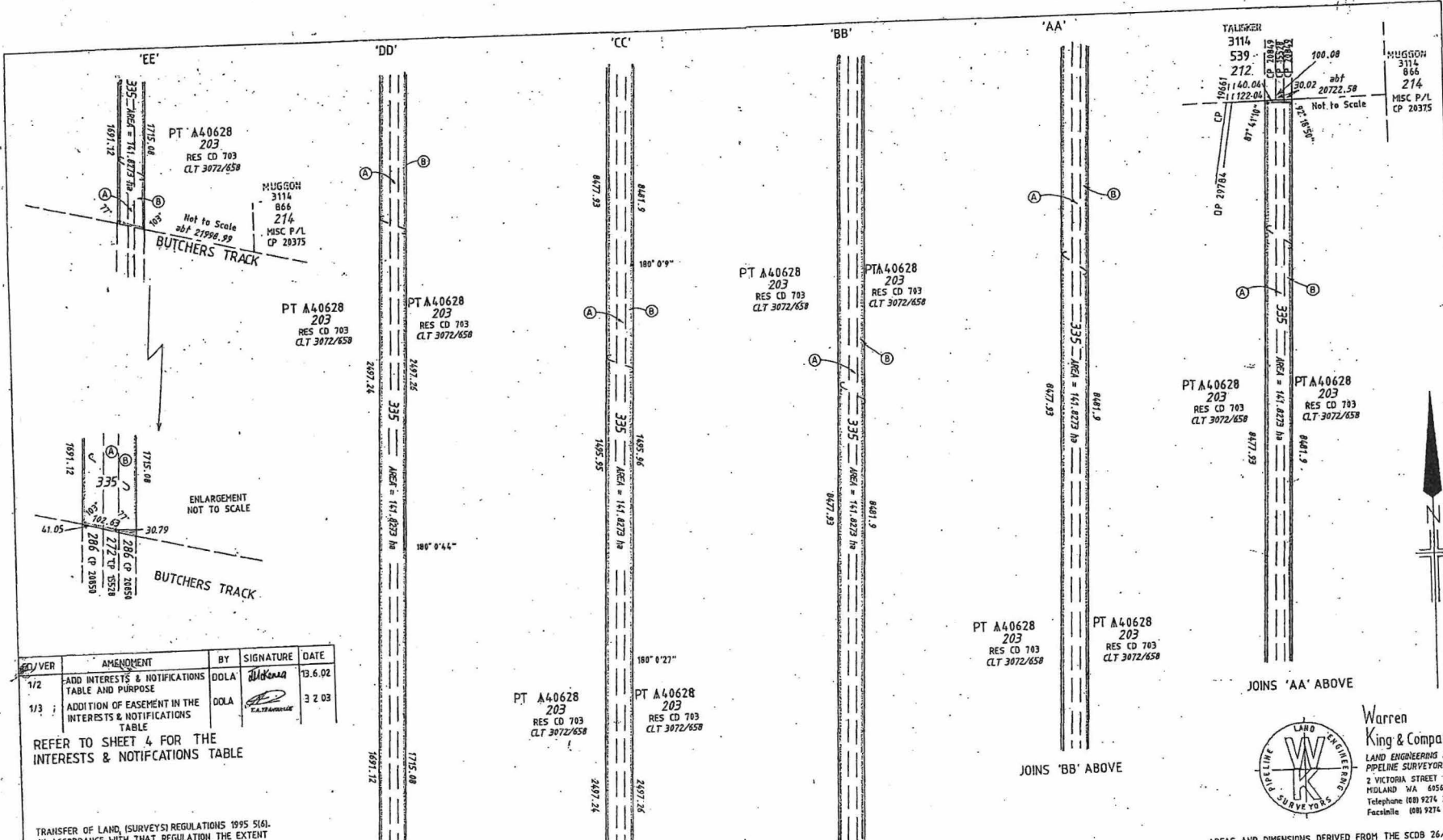
| | OFFICER | ACTION | |
|---|-------------------------------------------------|----------------------------------------------------------------------------------------------------------|-------------------------|
| 1 | LAND & EXTERNAL FUNDING UNIT | - Lisa Wright, Woodvale - District Manager, Geraldton District - Regional Manager, Mid West Region | _____ _____ _____ |
| 2 | SENIOR POLICY ADVISOR | To note native title clearance: | _____ |
| 3 | UNIT LEADER, LAND & EXTERNAL FUNDING | To note: | _____ |
| 4 | A/DIRECTOR, NATURE CONSERVATION | To note: | _____ |
| 5 | CIS | To note: | _____ |
| 6 | CONSERVATION ESTATE OFFICER | Reserve details to inside cover of file | _____ |



SEE SW MAP FOR OTHER REGIONS & DISTRICTS

DEPARTMENT OF CONSERVATION AND LAND MANAGEMENT REGION AND DISTRICT BOUNDARIES

OCTOBER 2001



| NO/VER | AMENDMENT | BY | SIGNATURE | DATE |
|--------|-------------------------------------------------------------|------|--------------------|---------|
| 1/2 | ADD INTERESTS & NOTIFICATIONS TABLE AND PURPOSE | DOLA | <i>[Signature]</i> | 13.6.02 |
| 1/3 | ADDITION OF EASEMENT IN THE INTERESTS & NOTIFICATIONS TABLE | DOLA | <i>[Signature]</i> | 3.2.03 |

REFER TO SHEET 4 FOR THE INTERESTS & NOTIFICATIONS TABLE

TRANSFER OF LAND (SURVEYS) REGULATIONS 1995 5(6). IN ACCORDANCE WITH THAT REGULATION THE EXTENT OF THE RESIDUE OF THE LOCATION IS NOT FULLY DEPICTED ON THIS PLAN.

TYPE CROWN

PURPOSE SUBDIVISION (DBNGP CORRIDOR)

PLAN OF LOTS 335, 336, 337 & 338

DISTRICT MURCHISON DOLA FILE 543/1998 V6

TOWNSITE SHIRE OF SHARK BAY

LOCALITY

SCALE: 1:10000

ALL DISTANCE ARE IN METRES

SURVEYOR'S CERTIFICATE - Reg 54

SURVEYOR'S CERTIFICATE - Compiled

CHARLES WARREN KING

DATE 26.2.02

WARREN KING AND COMPANY

LODGED DATE 27.2.2002

FEE PAID \$110

ASSESS NO. 237551

APPROVED BY WESTERN AUSTRALIAN PLANNING COMMISSION

RELEASED UNDER 512 WAPC ACT 1915

IN ORDER FOR DEALINGS

SUBJECT TO Redescription of A40628

APPROVED 2.9.02

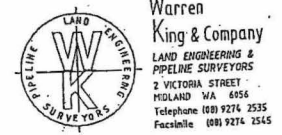
INSPECTOR OF PLANS & SURVEYS / AUTHORIZED LAND OFFICER

DOLA Department of LAND ADMINISTRATION

DEPOSITED PLAN 29782

EDITION 1 VERSION 3

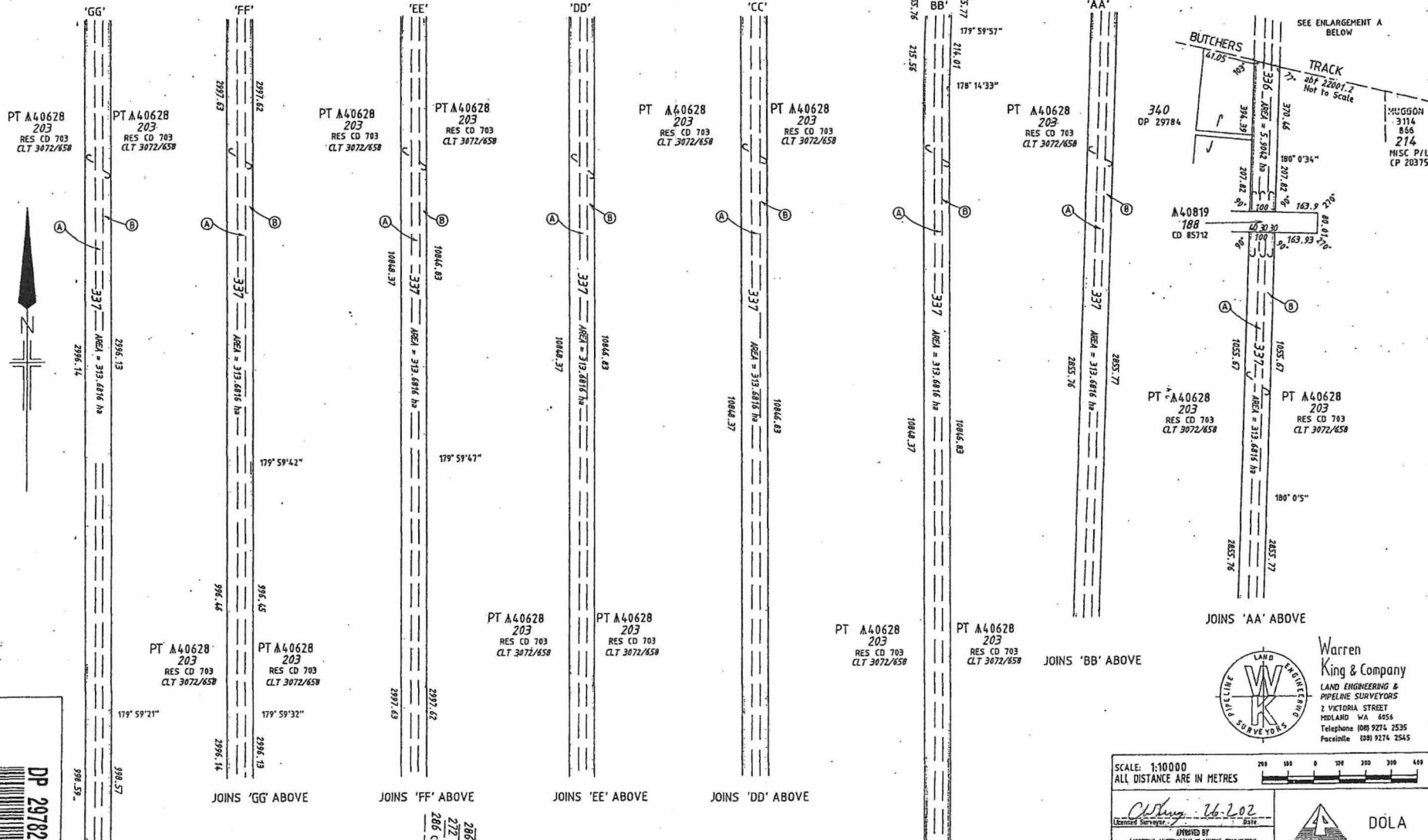
SHEET 1 OF 1



AREAS AND DIMENSIONS DERIVED FROM THE SCDB 26/10/2001

202

FOR HEADING SEE SHEET 1



PT A40628
203
RES CD 703
CLT 3072/658

PT A40628
203
RES CD 703
CLT 3072/658

PT A40628
203
RES CD 703
CLT 3072/658

PT A40628
203
RES CD 703
CLT 3072/658

PT A40628
203
RES CD 703
CLT 3072/658

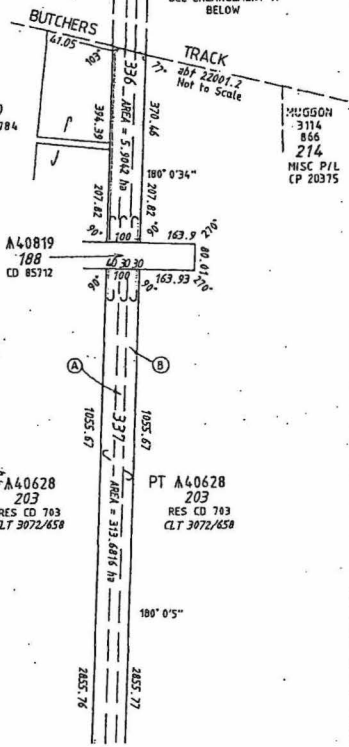
PT A40628
203
RES CD 703
CLT 3072/658

PT A40628
203
RES CD 703
CLT 3072/658

PT A40628
203
RES CD 703
CLT 3072/658

PT A40628
203
RES CD 703
CLT 3072/658

SEE ENLARGEMENT A BELOW



MUGGON
3114
896
274
MISC P/L
CP 20315

JOINS 'AA' ABOVE

JOINS 'BB' ABOVE

JOINS 'CC' ABOVE

JOINS 'GG' ABOVE

JOINS 'FF' ABOVE

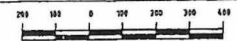
JOINS 'EE' ABOVE

JOINS 'DD' ABOVE

Warren
King & Company
LAND ENGINEERING &
PIPELINE SURVEYORS
2 VICTORIA STREET
WISLAND WA 6255
Telephone (08) 9274 2535
Facsimile (08) 9274 2545



SCALE: 1:10000
ALL DISTANCE ARE IN METRES



Approved by
WESTERN AUSTRALIAN PLANNING COMMISSION

DELEGATED UNDER S.26 WAPC ACT 1975

DATE

ENTRICH 1 YERSON 3

SHEET 2 OF 4

DOLA
Department of LAND ADMINISTRATION

DEPOSITED PLAN

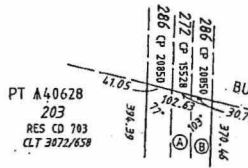
29782



DP 29782 (02)

JOINS SHEET 3

TRANSFER OF LAND (SURVEYS) REGULATIONS
1995 5(6). IN ACCORDANCE WITH THAT
REGULATION THE EXTENT OF THE RESIDUE
OF THE LOCATION IS NOT FULLY
DEPICTED ON THIS PLAN.



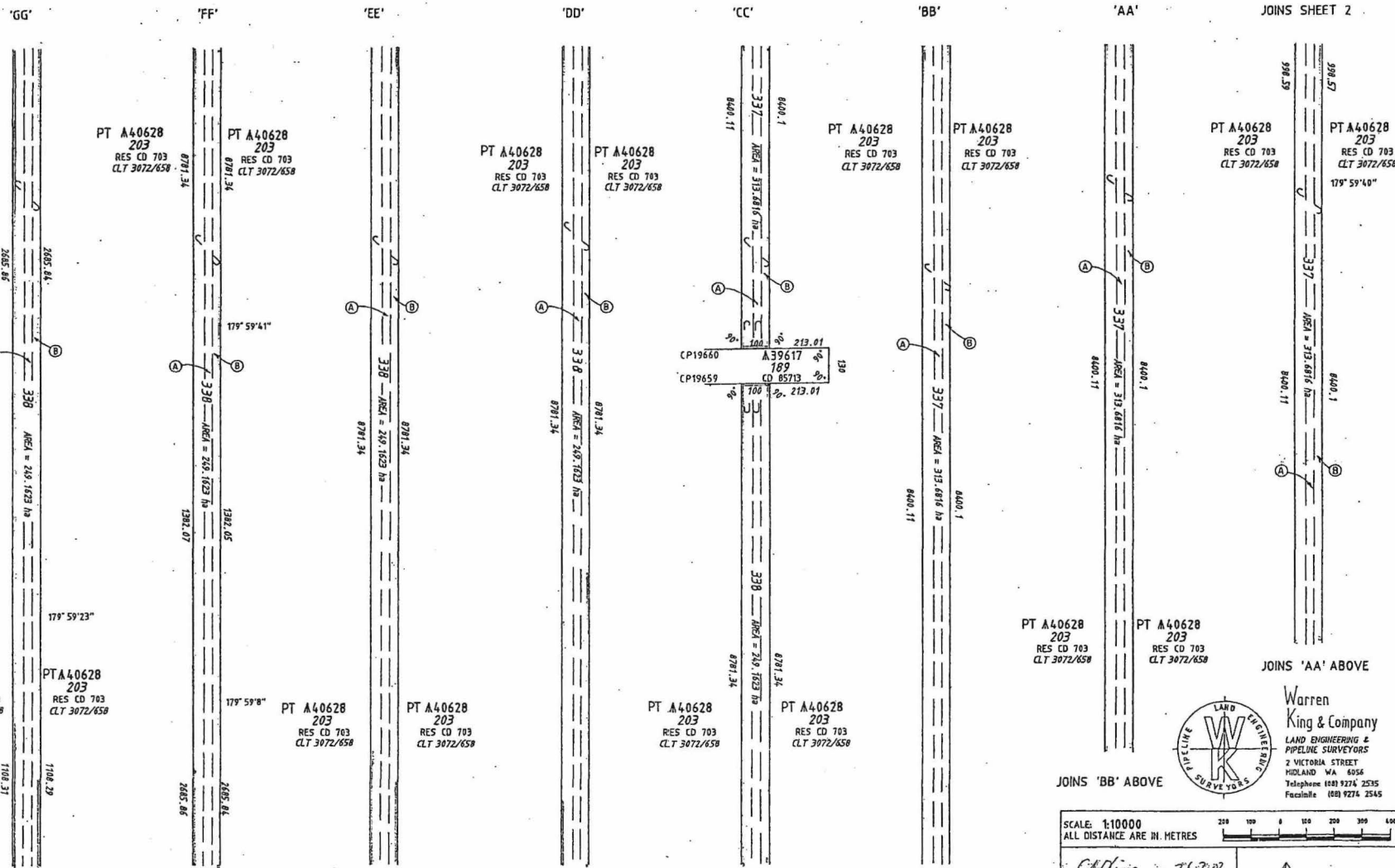
ENLARGEMENT A
NOT TO SCALE

AREAS AND DIMENSIONS DERIVED FROM THE SCDB 26/10/2001

289

FOR HEADING SEE SHEET 1

JOINS SHEET 2



PT A40628
203
RES CD 703
CLT 3072/658

PTA40628
203
RES CD 703
CLT 3072/658

PT A40628
203
RES CD 703
CLT 3072/658

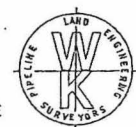
PT A40628
203
RES CD 703
CLT 3072/658

PT A40628
203
RES CD 703
CLT 3072/658

PT A40628
203
RES CD 703
CLT 3072/658

PT A40628
203
RES CD 703
CLT 3072/658

PT A40628
203
RES CD 703
CLT 3072/658



Warren
King & Company
LAND ENGINEERING &
PIPELINE SURVEYORS
2 VICTORIA STREET
MIDLAND WA 8056
Telephone 1888 9274 2535
Facsimile 1888 9274 2545

JOINS 'BB' ABOVE

JOINS 'AA' ABOVE

SCALE: 1:10000
ALL DISTANCES ARE IN METRES



Channing 26-2-02
Licensed Surveyor Date

APPROVED BY
WESTERN AUSTRALIAN PLANNING COMMISSION

DELEGATED UNDER SECTION 267(1) ACT 1985

DATE

ENTRANCE 1 VERSION 3

SHEET 3 OF 4

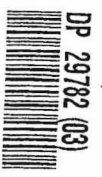
DOLA
Department of LAND ADMINISTRATION

DEPOSITED PLAN

29782

TRANSFER OF LAND (SURVEYS) REGULATIONS
1995 5(6), IN ACCORDANCE WITH THAT
REGULATION THE EXTENT OF THE RESIDUE
OF THE LOCATION IS NOT FULLY
DEPICTED ON THIS PLAN.

AREAS AND DIMENSIONS DERIVED FROM THE SCDB 26/10/2001



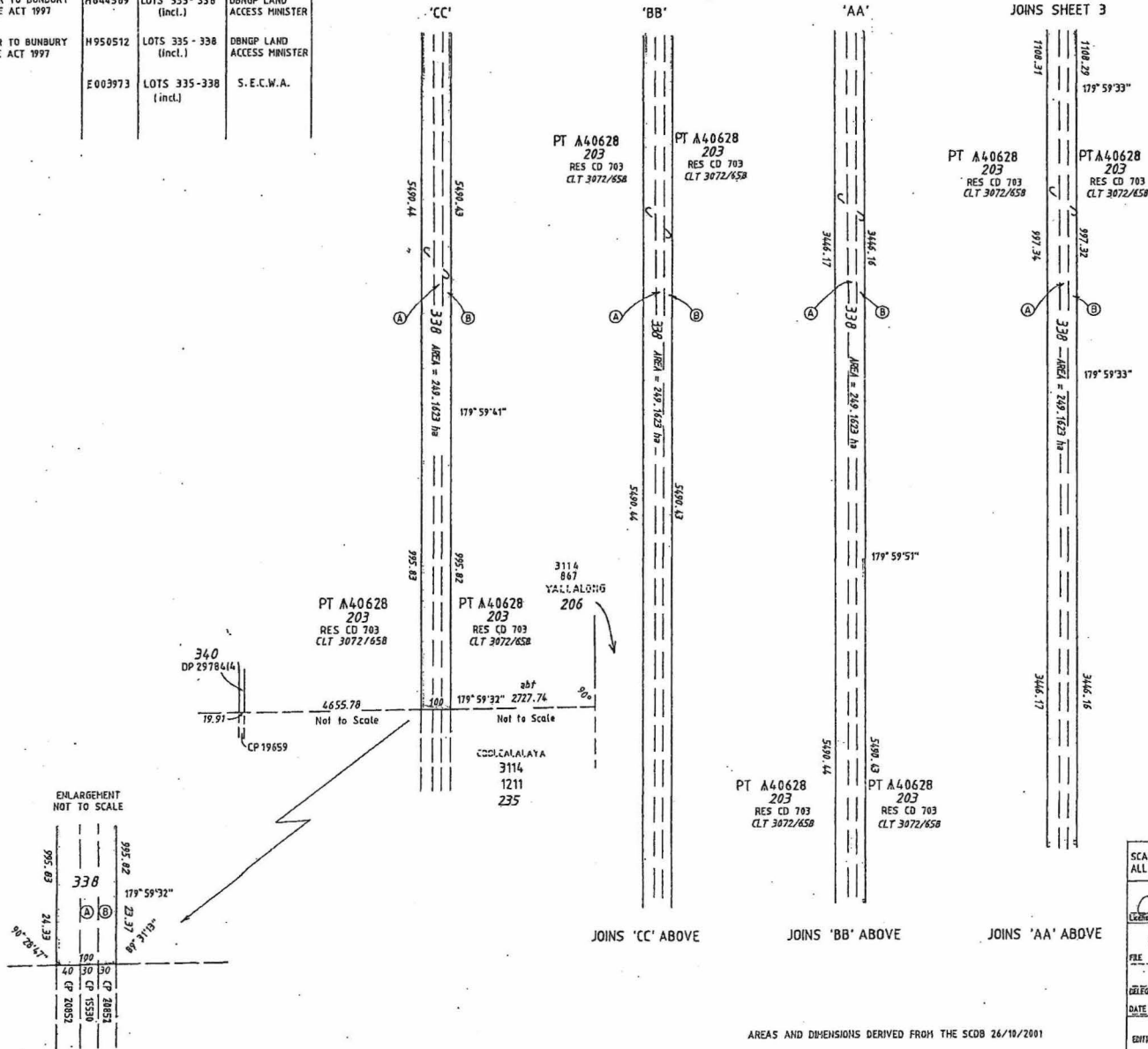
288

INTERESTS AND NOTIFICATIONS

| SUBJECT | PURPOSE | STATUTORY REFERENCE | ORIGIN | LAND BURDENED | BENEFIT TO |
|---------|-----------------------|--------------------------------------|---------|----------------------|----------------------------|
| (A) | STATE CORRIDOR RIGHTS | DAMPIER TO BUNBURY PIPELINE ACT 1997 | H644589 | LOTS 335-338 (incl.) | DBMGP LAND ACCESS MINISTER |
| (B) | STATE CORRIDOR RIGHTS | DAMPIER TO BUNBURY PIPELINE ACT 1997 | H950512 | LOTS 335-338 (incl.) | DBMGP LAND ACCESS MINISTER |
| (A) | EASEMENT | | E003973 | LOTS 335-338 (incl.) | S.E.C.W.A. |

FOR HEADING SEE SHEET 1

JOINS SHEET 3



TRANSFER OF LAND (SURVEYS) REGULATIONS 1995 (46), IN ACCORDANCE WITH THAT REGULATION THE EXTENT OF THE RESIDUE OF THE LOCATION IS NOT FULLY DEPICTED ON THIS PLAN.



Warren King & Company
 LAND ENGINEERING & PIPELINE SURVEYORS
 2 VICTORIA STREET
 MELBAND WA 6056
 Telephone (08) 9274 2535
 Facsimile (08) 9274 2545

SCALE: 1:10000
 ALL DISTANCES ARE IN METRES

200 100 0 100 200 300 400

Approved by: *Cherry* 26-2-02
 Licensed Surveyor Date

APPROVED BY
 WESTERN AUSTRALIAN PLANNING COMMISSION

FILE: _____
 DEPOSITED UNDER 630 WAPA ACT 1995

DATE: _____

EDITION: 1 VERSION: 3

SHEET: 4 OF 4

DOLA
 Department of LAND ADMINISTRATION

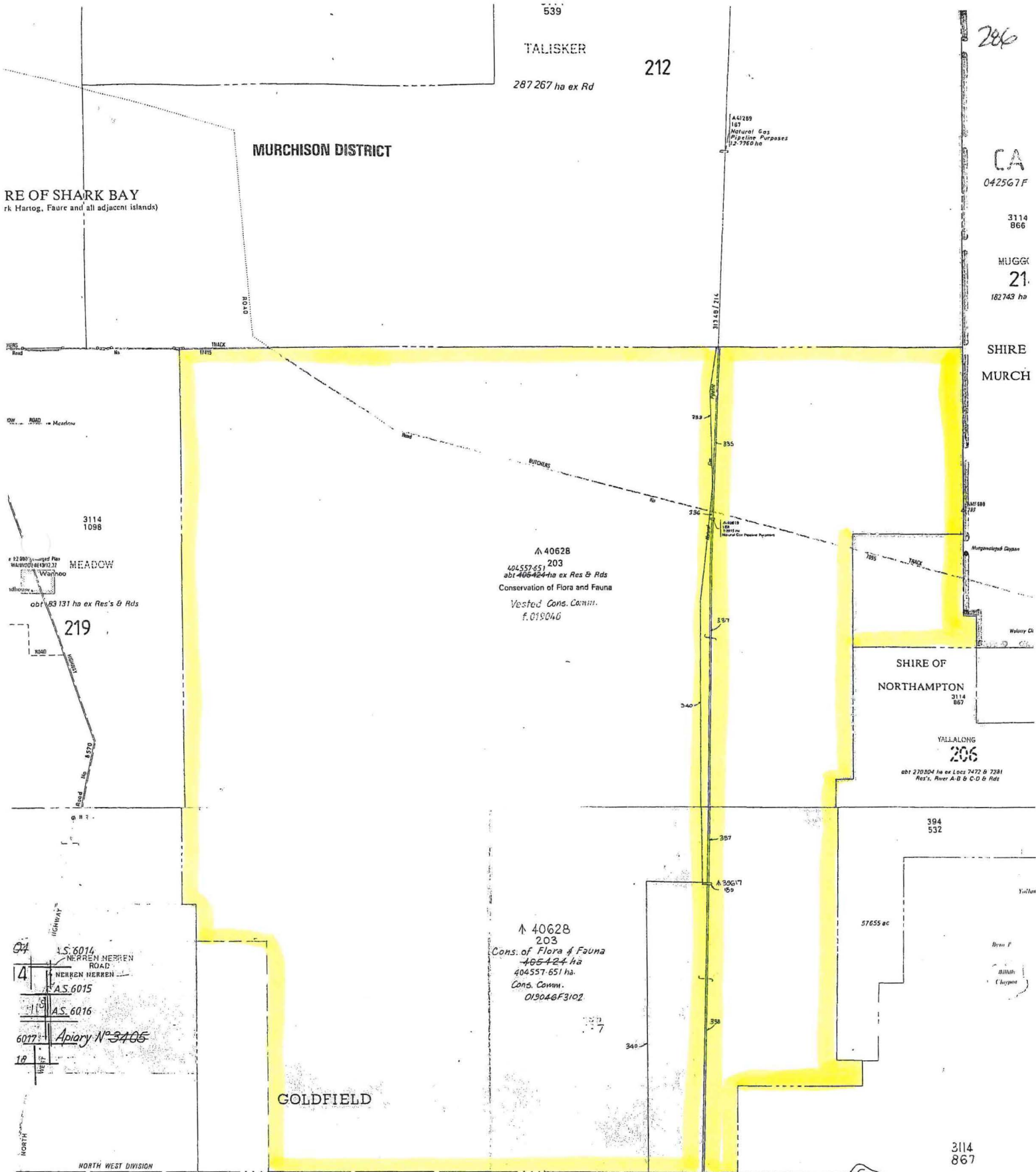
DEPOSITED PLAN

29782

AREAS AND DIMENSIONS DERIVED FROM THE SCOB 26/10/2001



287



RE OF SHARK BAY
rk Hartog, Faure and all adjacent islands)

MURCHISON DISTRICT

TALISKER
287 267 ha ex Rd

212

286

CA
042567F

3114
866

MUGGER
21
182743 ha

SHIRE
MURCH

3114
1098

MEADOW

219

A 40628
203
404557-651
abt 406424 ha ex Res & Rds
Conservation of Flora and Fauna
Vested Cons. Comm.
f. 019046

SHIRE OF
NORTHAMPTON

YALLALONG
206

abt 270504 ha ex Lots 7472 B 7281
Res's, River A-B & C-D & Rd

394
532

A 40628
203
Cons. of Flora & Fauna
405424 ha
404557-651 ha
Cons. Comm.
019046F3102

5765 ac

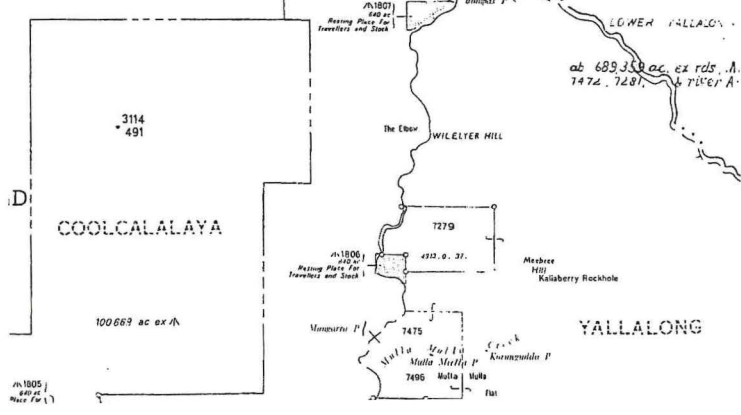
GOLDFIELD

S.S. 6014
NERREN NERREN
ROAD
NERREN NERREN
S.S. 6015
S.S. 6016
6017
Apiary N° 3405

MURCHISON

Pt. DLI Plans: YARINGA (SG 50-9)
& AJANA (SG 50-13)

REDUCED SCALE



3114
491
COOLCALALAYA

100669 ac ex A

ab 689358 ac ex rds, A
7472, 7281, River A

YALLALONG

**Customer Advices for Reserve Actions
1/04/2003 - 30/04/2003**

Shire of Shark Bay 1/04/2003 - 30/04/2003

| Reserve No. | Land Description | DOLA File No. | Volume/Folio | Action | Document No. | Registered | Street Name | Area | Public Plans |
|-------------|------------------------|-----------------|--------------|---------------------------------------------------------------------------------------------------------------------------------------------------------------------------------------------------------------------------------------------------------------------------------------------------------------------------------|--------------|------------|-------------|-----------------|--------------|
| 40628 | Murchison Location 203 | 01348-1960-02RO | 3072-658 | Amendment of Reserve to The reserve is amended by excision the DBNGP corridor (863.349ha) and area amended to 404,557.66ha. The DBNGP corridor being Murchison Location 341 on Deposited Plan 29785, Murchison Locations 339 & 340 on Deposited Plan 29784 and Murchison Locations 335, 336, 337 & 338 on Deposited Plan 29782. | I223011 | 02/09/2002 | | 404557.66 Ha | |



285