

## RESERVE ACTION SHEET - CONSERVATION RESERVES

**RESERVE No. 41775 & 22697**

**REASON FOR ACTION**

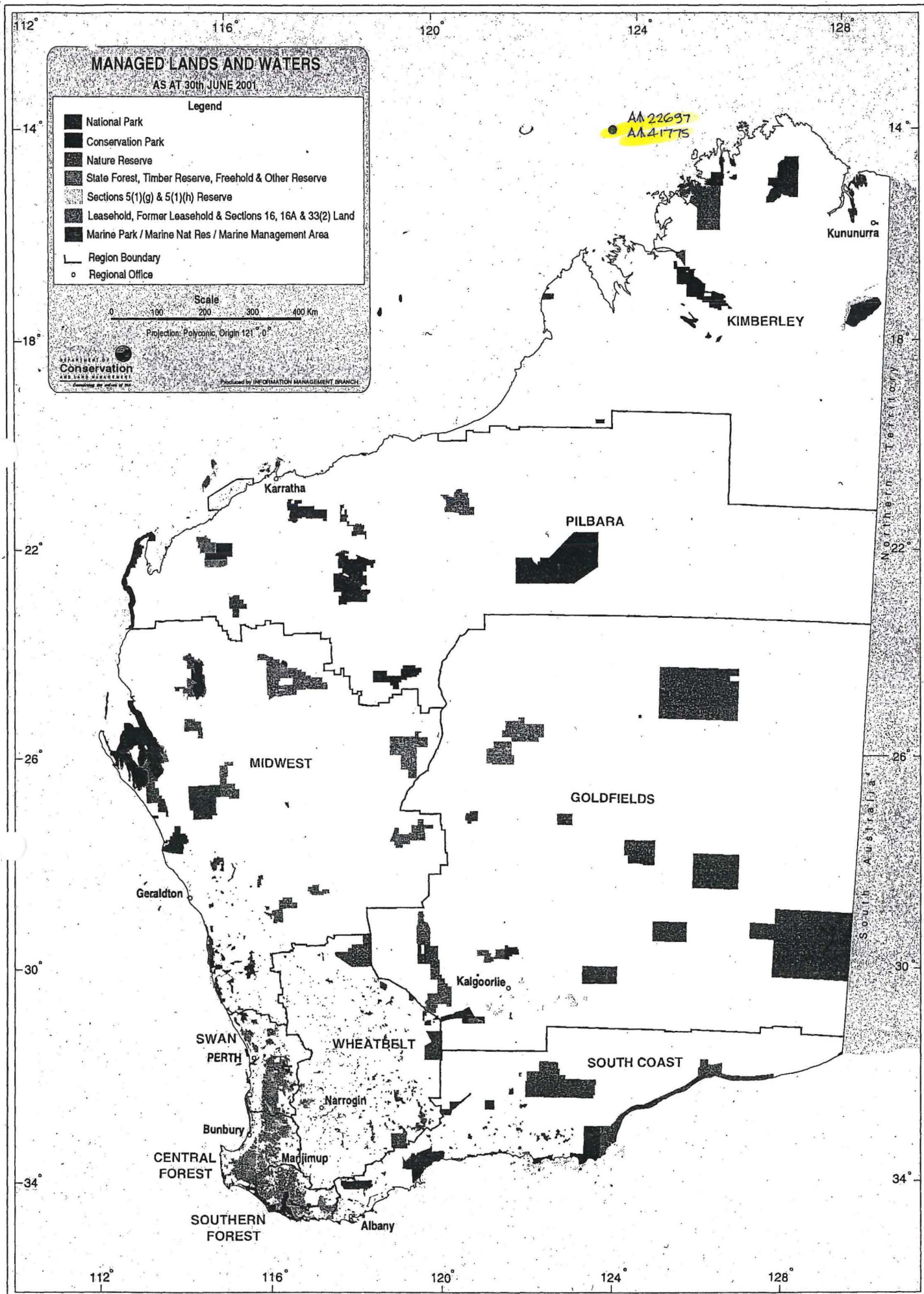
The creation of a 5(1)(h) reserve for the purpose 'Conservation, Navigation, Communication, Meteorology and Survey' and the creation of a new nature reserve for the purpose 'Conservation of Flora and Fauna', both vested in the Conservation Commission.

Area: 0.24 & 14.03 hectares

Due to increasing use of satellite aided navigation and AMSA'S desire to rationalise it's property holdings the Commonwealth has been divesting properties containing lighthouses and marine navigational aids. Reserve 41775 on Browse Island is a former AMSA property which will be leased back to AMSA to permit continued operation of lighthouse facilities. The addition of 9.32 ha to reserve 22697 on Browse Island is a former AMSA property, which will now be managed as a nature reserve.

- Date of DOLA's advice: 4 December 2000      See folio: 224,216
- Plans at folios: 228,227,226,225

	OFFICER	ACTION	
1	<b>CONSERVATION ESTATE OFFICER</b> <i>LS</i>	<ul style="list-style-type: none"> <li>- Fill in above details</li> <li>- Attach copies of DOLA's advice to file</li> </ul> <p>Send copies of advice &amp; maps to:</p> <ul style="list-style-type: none"> <li>- Lisa Wright, Woodvale</li> <li>- Regional Manager, Kimberley</li> </ul> <p>Recommended IUCN classification:</p>	<div style="border-bottom: 1px solid black; width: 100%;"></div> <div style="border-bottom: 1px solid black; width: 100%;"></div> <div style="border-bottom: 1px solid black; width: 100%;"></div> <div style="border-bottom: 1px solid black; width: 100%;"></div>
2	<b>LAND ACQUISITIONS OFFICER</b>	To note:	<div style="border-bottom: 1px solid black; width: 100%;"></div>
3	<b>MANAGER, PLANNING &amp; VISITOR SERVICES</b>	To note & approve IUCN classification:	<div style="border-bottom: 1px solid black; width: 100%;"></div>
4	<b>DIRECTOR, NATURE CONSERVATION/ NATIONAL PARKS</b>	To note:	<div style="border-bottom: 1px solid black; width: 100%;"></div>
5	<b>INDEX CLERK, RECORDS</b>	To note:	<div style="border-bottom: 1px solid black; width: 100%;"></div>
6	<b>CONSERVATION ESTATE OFFICER</b>	Attach copy of Reserve Details to inside cover of new file	<div style="border-bottom: 1px solid black; width: 100%;"></div>



# MANAGED LANDS AND WATERS

AS AT 30th JUNE 2001

## Legend

- National Park
- Conservation Park
- Nature Reserve
- State Forest, Timber Reserve, Freehold & Other Reserve
- Sections 5(1)(g) & 5(1)(h) Reserve
- Leasehold, Former Leasehold & Sections 16, 16A & 33(2) Land
- Marine Park / Marine Nat Res / Marine Management Area
- Region Boundary
- Regional Office

Scale  
0 100 200 300 400 Km

Projection: Polyconic, Origin 121° 0'



Produced by INFORMATION MANAGEMENT BRANCH

AA 22637  
AA 41775

Kununurra

KIMBERLEY

PILBARA

MIDWEST

GOLDFIELDS

Geraldton

Kalgoorlie

SWAN  
PERTH

WHEATBELT

SOUTH COAST

Narrogin

Bunbury

CENTRAL  
FOREST

Manjimup

SOUTHERN  
FOREST

Albany

Northern Territory

South Australia

124° 30'

45'

670000mE

68

69

70

71

mN

44

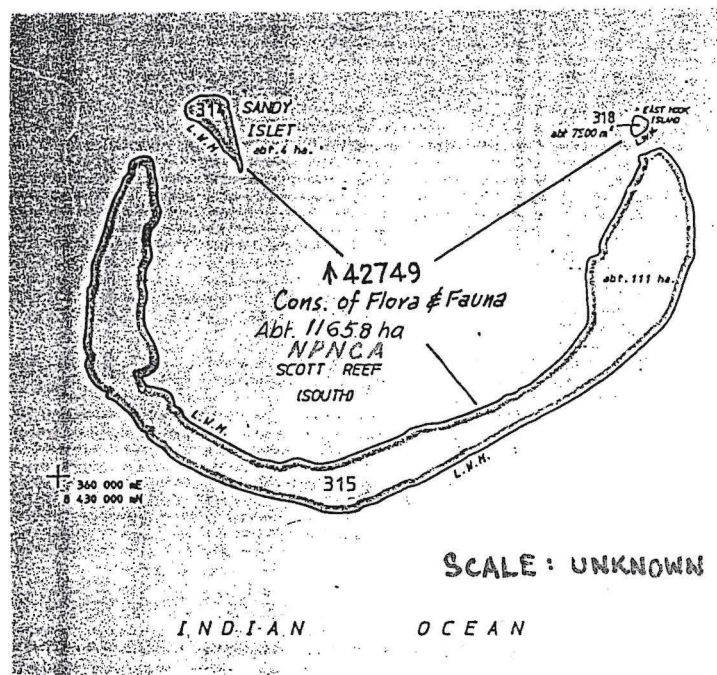
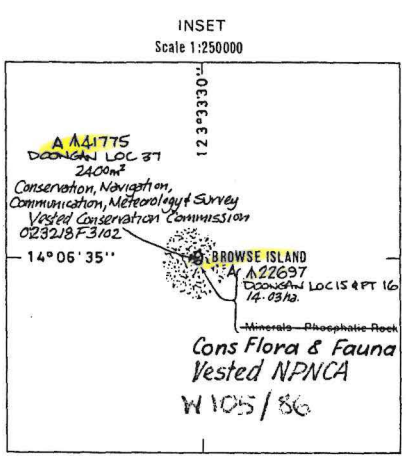
43

42

41

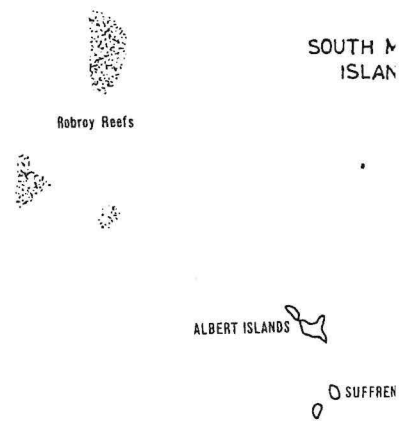
40  
T.N.

39



INDIAN

OCEAN



FAGT DOVA PLADJ.  
MONTAGUE SOUND. (SG 51-12)  
SCALE 1:250000.

**Customer Advices for Reserve Actions**  
**1/08/2001 - 31/08/2001**

**Shire of Wyndham-East Kimberley 1/08/2001 - 31/08/2001**

Reserve No.	Land Description	DOLA File No.	Volume/Folio	Action	Document No.	Registered	Street Name	Area	Public Plans
41775		02153-1989-01RO	3081-95	Management Order to Conservation Commission of Western Australia C/- Department of Conservation and Land Management Locked Bag 104 Bentley Delivery Centre Como W.A 6152 for the designated purpose of "Conservation, Navigation, Communication, Meteorology and Survey"	H651910	23/01/2001		0.24 Ha	Montague Sound 1:250 000

224

**Customer Advices for Reserve Actions  
1/08/2001 - 31/08/2001**

1/08/2001 - 31/08/2001

*see SEAS IS. NR*

*see SEA IS. NR*

*see Derby - west Kimberley entry*

*see Ashburton entry*

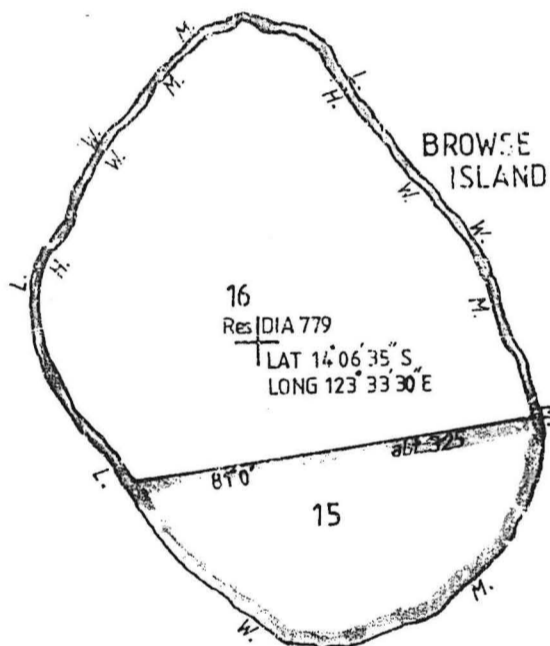
*see Roebourne entries*

*see Wyndham - at Kimberley entry*

*see CALM LIGHTHOUSE*

Reserve No.	Land Description	DOLA File No.	Volume/Folio	Action	Document No.	Registered	Street Name	Area	Public Plans
22697	Doongan Location 15 on Land Administration Reserve Diagram 778		3066-834	Amendment of Reserve to To include Part Doongan Location 16 on Land Administration Reserve Diagram 779 and it's area being increased to about 14.0300 hectares.	H612276	04/12/2000		0 sqm	
27614	Plantagenet Location 8112 on Land Administration Reserve Diagram 212	06032-1913-01RO	3122-792	Amendment of Reserve to To include Plantagenet Location 7898 on Land Administration Reserve Diagram 1441 and it's area increasing to 104.1992 or there abouts.	H612404	01/12/2000		104.1992 Ha	Breaksea NW 25,000
28968			3069-149	Revocation of Management Order () for the designated purpose of "".	H612323	04/12/2000		0 sqm	
28968	Meda Location 14 on Land Administration Diagram 88518		3069-149	Change of Purpose to "Conservation, Navigation, Communication, Meteorology & Survey."	H612329	04/12/2000		0 sqm	
38105			3041-024	Revocation of Management Order () for the designated purpose of "".	H612292	04/12/2000		0 sqm	
38105	Guilderton Lot 407 on Land Administration Plan 15382		3041-024	Change of Purpose to "Navigation, Communication, Meteorology & Survey."	H612293	04/12/2000		0 sqm	
40322			3054-955	Revocation of Management Order () for the designated purpose of "".	H612309	04/12/2000		0 sqm	
40322	Ashburton Location 143 on Land Administration Diagram 88287		3054-955	Change of Purpose to "Conservation, Navigation, Communication, Meteorology & Survey."	H612310	04/12/2000		0 sqm	
40828			3000-173	Revocation of Management Order () for the designated purpose of "".	H612325	04/12/2000		0 sqm	
40828	Ashburton Locations 47 and 136 on Land Administration Diagrams 76229 and 87701		3000-173	Change of Purpose to "Conservation, Navigation, Communication, Meteorology & Survey."	H612326	04/12/2000		0 sqm	
40877			3000-143	Revocation of Management Order () for the designated purpose of "".	H612283	04/12/2000		0 sqm	
40877	De Witt Locations 46 and 219 on Land Administration Diagrams 76228 and 87702		3000-143	Change of Purpose to "Conservation, Navigation, Communication, Meteorology & Survey."	H612284	04/12/2000		0 sqm	
41080			3000-133	Revocation of Management Order () for the designated purpose of "".	H612296	04/12/2000		0 sqm	
41080	Ashburton Locations 49 and 135 on Land Administration Diagrams 76230 and 87700		3000-133	Change of Purpose to "Conservation, Navigation, Communication, Meteorology & Survey."	H612297	04/12/2000		0 sqm	
41775			3066-837	Revocation of Management Order () for the designated purpose of "".	H612472	04/12/2000		0 sqm	
41775	Doongan Location 16 on Land Administration Reserve Diagram 779		3066-837	Change of Purpose to "Conservation, Navigation, Communication, Meteorology & Survey."	H612456	04/12/2000		0 sqm	
41775	Doongan Location 16 on Land Administration Reserve Diagram 779		3066-837	Amendment of Reserve to To comprise Doongan Location 37 on Land Administration Miscellaneous Diagram 556 in lieu of Doongan Location 16 and it's area being reduced to 2400 square metres.	H612274	04/12/2000		0 sqm	
44298			3094-801	Revocation of Management Order () for the designated purpose of "".	H612305	04/12/2000		0 sqm	
44298	Dampier Location 240 on Land Administration Diagram 89239		3094-801	Change of Purpose to "Navigation, Communication, Meteorology & Survey."	H612306	04/12/2000		0 sqm	

INDIAN




OCEAN

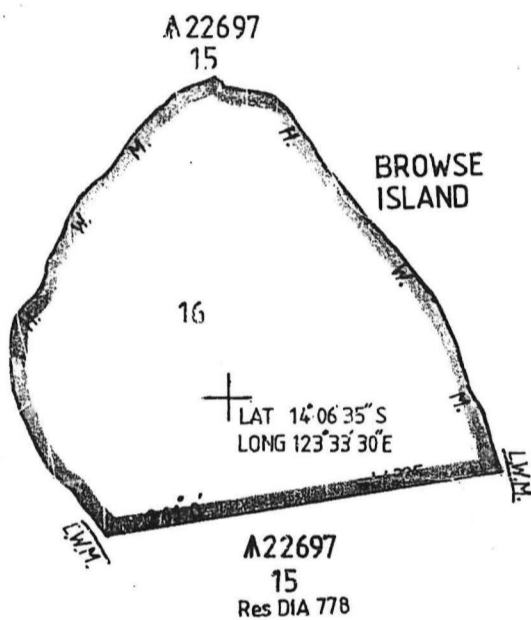
INFORMATION SHOWN DERIVED FROM HYDROGRAPHIC CHARTS AUS 319 AND BA 1242.

SURROUNDING REEFS AND ROCKS ARE INCLUDED IN A 22697

THE WATER LINES SHOWN ON THIS DIAGRAM DO NOT NECESSARILY DEPICT EXACT CADASTRAL BOUNDARIES. BOUNDARIES EXTEND TO LOW WATER MARK.

RESERVE No. 22697		Purpose Conservation of Flora and Fauna				Area abt 4.71 ha		
CORR. No. 2978 / 15 V.2				AMENDMENTS			SCALE 1:5000	
DISTRICT DOONGAN				Gaz	Page	Intls	Gaz	Page
PUBLIC PLAN MONTAGUE SOUND								
1:250 000								
PREPARED BY J.A.V. MEERTENS								
CAL BOOK REF. 9 Page 69								
EXAMINED <i>P. J. van der ...</i> 12. 5. 89								
APPROVED <i>W. J. ...</i> 12. 5. 89								
1/ MANAGER STATUTORY AMENDMENTS		SUBJECT TO SURVEY			RECORDED ON PUBLIC PLAN REGISTERED 12. 5. 89 ON KEY PLAN ...			
					RESERVE DIAGRAM No. 778			

INDIAN



OCEAN

INFORMATION SHOWN DERIVED FROM HYDROGRAPHIC CHARTS AUS 319 AND BA 1242.  
 THE WATERLINES SHOWN ON THIS DIAGRAM DO NOT NECESSARILY DEPICT EXACT CADASTRAL BOUNDARIES.  
 BOUNDARIES EXTEND TO HIGH WATERMARK.

<b>RESERVE No.</b> 2978 / 15 V2		<b>Purpose</b> Marine Navigation Aid Purposes				<b>Area</b> abt 9.56 ha	
<b>CORP. No.</b> 2978 / 15 V2		<b>AMENDMENTS</b>				<b>SCALE</b> 1:5000	
<b>DISTRICT</b> DOONGAN		<b>Gaz</b>	<b>Page</b>	<b>Intls</b>	<b>Gaz</b>	<b>Page</b>	<b>Intls</b>
<b>PUBLIC PLAN</b> MONTAGUE SOUND 1:250 000							
<b>PREPARED BY</b> J.A.M. MEERTENS							
<b>CAL. BOOK REF</b> 9 Page 69							
<b>EXAMINED</b> <i>[Signature]</i> 18.5.89							
<b>APPROVED</b> <i>[Signature]</i> 12.5.89							
<b>4/ MANAGER STATUTORY AMENDMENTS</b>							
		<b>SUBJECT TO SURVEY</b>				<b>RESERVE DIAGRAM No. 779</b>	