

RESERVE ACTION SHEET: CONSERVATION RESERVES

RESERVE No. 42958

LOCAL GOVERNMENT: Shire of Mundaring

NAME : Leschenaultia Conservation Park

PURPOSE: Conservation Park

VESTING: Conservation Commission

ACTION

In 1996 the Department of Environment and Conservation (DEC) began negotiating the excision of 1.4ha from Leschenaultia Conservation Park for addition to school site reserve 22809. The expansion of Eastern Hills Senior High School's oval into the Conservation Park made the excision necessary. An excision of 1.4ha of previously cleared land was negotiated for addition to the school site reserve. On 1 February 2010 the excision was finalised and as a result the boundaries of the reserve have been amended to include Lot 360 on Deposited Plan 64505 in lieu of Lots 7168 on Deposited Plan 92198 and 2076 on Deposited Plan 112295.

Total Area: 342.28 to 340.88ha

REASON FOR ACTION

The excision of 1.4ha from Leschenaultia Conservation Park was required for expansion of adjacent school oval.

Date of amendment: 1/2/2010

Maps: 13

Customer advice: 20

Proposal Summary: 24

IUCN classification: 1a

1	LAND UNIT LEADER	To note	
2	LAND UNIT	Send copies of advice and maps to: <ul style="list-style-type: none"> • Lisa Wright (Woodvale) • District Manager • Regional Manager Attach TENIS gazettal history to file Delete from District Proposals spreadsheets Create Conservation Commission summary	[Signature] ✓ NM ✓ NM ✓ NM ✓ NM ✓ NM
3	DIRECTOR, NATURE CONSERVATION	To note	
4	C.I.S.	Please rename file/create new file Keyword: Activity: Subject: Free text:	

Customer Advices for Reserve Actions
1/02/2010 - 28/02/2010

Shire of Mundaring 1/02/2010 - 28/02/2010

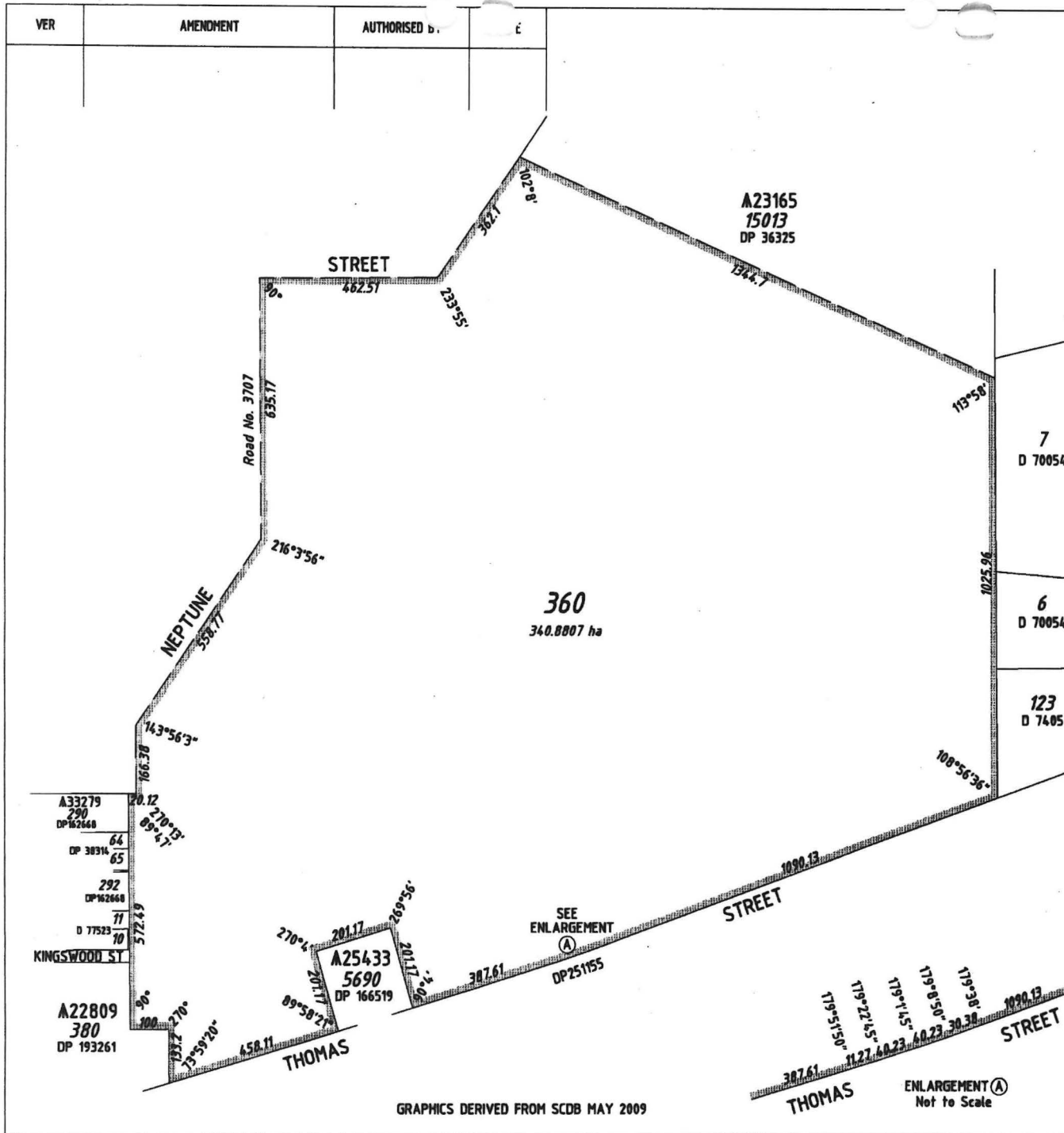
Reserve No.	Land Description	DPI File No.	Volume/Folio	Action	Document No.	Registered	Street Name	Area	Public Plans
22809	Mount Helena Lot 289 on Deposited Plan 162562. Mount Helena Lot 341 on Deposited Plan 214131.	01049-1948-01RO	0000-000 0000-000	Amendment of Reserve to To now comprise Lot 380 on Deposited Plan 193261, in lieu of Lots 289 on Deposited Plan 162562, and Lot 341 on Deposited Plan 214131, and with its area being increased to 22.1718 hectares, accordingly.	L138594	13/11/2009	Bounded in part by Chidlow, Kingswood, Keane, Lion and Thomas Street's, Mount Helena.	22.1718	BG34 (2) 34.33 and 34.34
29333	Lot 117 on Plan 8520 Lot 117 on Plan 8521	04510-1965-01RO	0000-000 0000-000	Amendment of Reserve to To now comprise Lot 377 on Plan 8520 in lieu of Lot 177 on Plan 8520 and Lot 378 on Plan 8521 in lieu of Lot 117 on Plan 8521, the area remaining unchanged.	L227132	09/02/2010	Blenheim Place, Swan View	2.0689 Ha	BG34 02 24.32,25.32
42958	Lot 2076 on Deposited Plan 112295. Lot 7168 on Deposited Plan 92198.	00526-1991-03RO	3141-921 3141-922	Amendment of Reserve to To now comprise Lot 360 on Deposited Plan 64505, in lieu of Lots 7168 on Deposited Plan 92198, and Lot 2076 on Deposited Plan 112295, and with its area being reduced to 340.8807 hectares, accordingly.	L138593	13/11/2009	Bounded in part by Neptune and Thomas Street's, in the localities of Mount Helena and Chidlow.	340.8807	BG34 (2) 34.34, 35.34, 36.34,35.35, 36.35, 35.36 AND 36.36
44712	Lot 572 on Deposited Plan 91527 (LR3045/692)	01006-1980-01RO	3045-892	Management Order to Electricity Networks Corporation of GPO Box L921, PERTH WA 6842 To be utilised for the designated purpose of "Public Utilities Services" only, for the designated purpose of "Public Utilities Services"	L209570	22/01/2010	Between Great Eastern Highway & Pittersen Road, Mundaring	5476 sqm	BG34(2) 25.30 & 25.31

TO : REBECCA HAYES


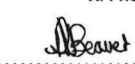
ALL RECORDS & DATABASES INCLUDING
TENIS AMENDED. DOCUMENT ADDED
TO FILE PG 21.

R. Donia
1/4/11

Rob,
for your action, please
return to me once compl
decs,
Rebecca



GRAPHICS DERIVED FROM SCDB MAY 2009

TYPE		CROWN	
PURPOSE		SUBDIVISION	
PLAN OF			
LOT 360			
DISTRICT		SWAN	
TOWNSITE			
FILE		526-1991 v3	
LOCAL AUTHORITY		SHIRE OF MUNDARING	
LOCALITY		CHIDLW	
REFERENCE		INDEX	
FILE 526-1991 v3 pages 41,73 &74			
SCALE @A3: ALL DISTANCES ARE IN METRES			
1:10000		0 100 200 300 400 500	
SUBJECT TO SURVEY NOT FOR ALIENATION PURPOSES			
LODGED	TYPE OF VALIDATION	SURVEY FIRM	
DATE: 8/6/2009	FULL AUDIT..... PWK.....	LANDGATE - C.FIORENTINO DATE 3-6-2009	
FREE PAID	LEGAL COMPONENT.....		
ASSESS No. N/A	CERTIFIED CORRECT 9/6/2009 Manager Boundary Definition		
IN ORDER FOR DEALINGS			
SUBJECT TO			
1. SIMULTANEOUS APPROVAL OF DP 193261			
2. RESERVE ACTION			
FOR AUTHORISED LAND OFFICER		DATE	
APPROVED		9/6/2009	
 AUTHORIZED LAND OFFICER		13-11-2009 DATE	
SHEET 1 OF 1 VERSION 1			

HELD BY LANDGATE
IN DIGITAL FORM ONLY

ENLARGEMENT (A)
Not to Scale