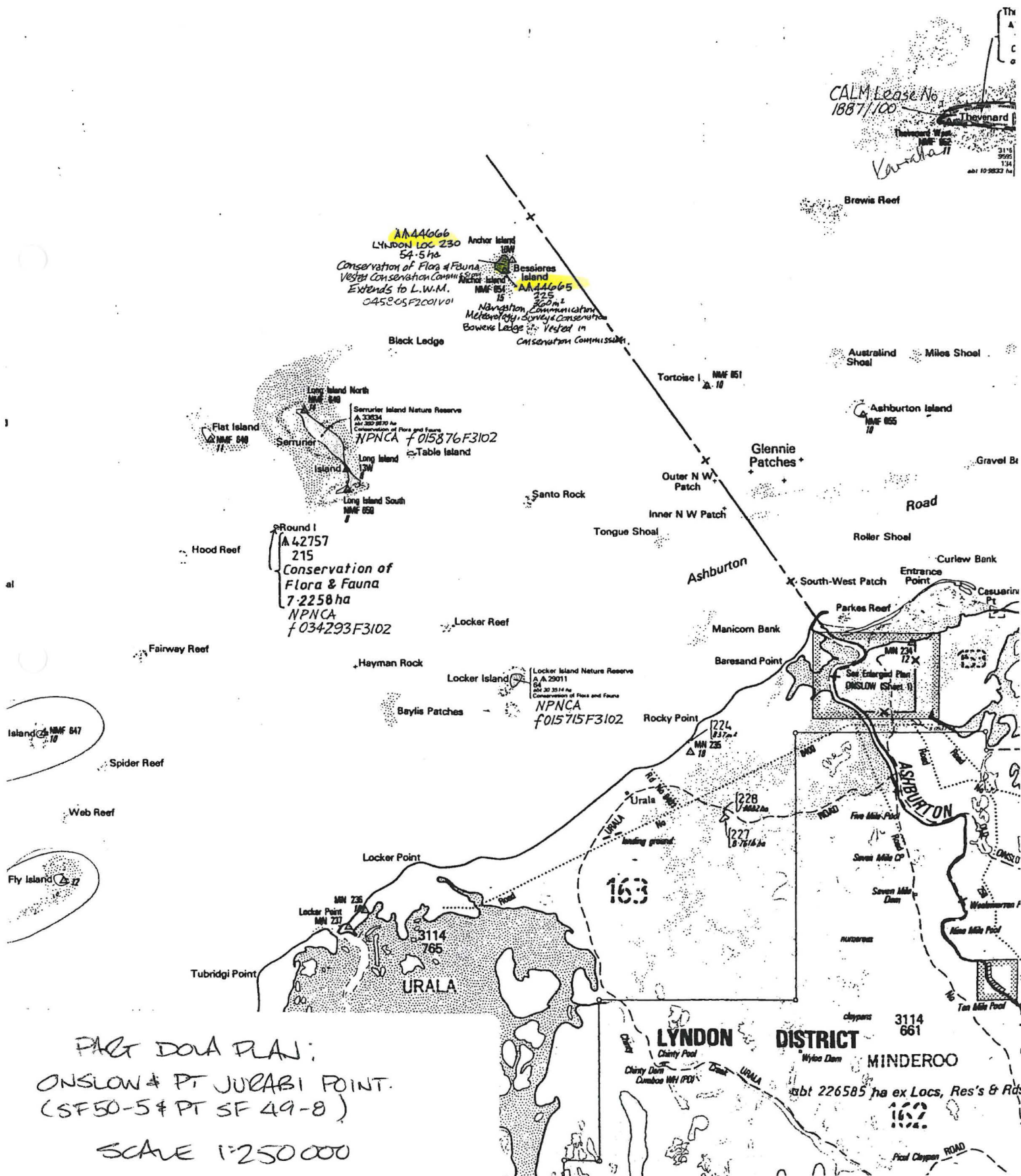


OCEAN



PART DOVA PLAN;
 ONSLOW & PT JURABI POINT.
 (SF50-5 & PT SF 49-8)

SCALE 1:250 000

LYNDON DISTRICT MINDEROO

abt 226585 ha ex Locs, Res's & Rd

**Customer Advices for Reserve Actions
1/04/2001 - 30/04/2001**

1/04/2001 - 30/04/2001

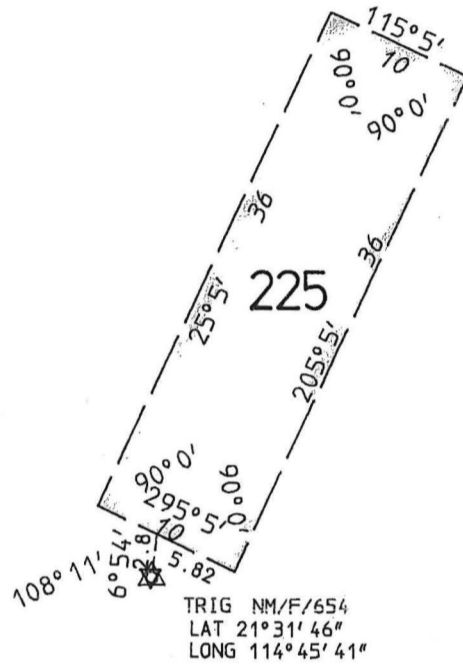
Reserve No.	Land Description	DOLA File No.	Volume/Folio	Action	Document No.	Registered	Street Name	Area	Public Plans
19400	Kyarra District	01985-1998-01RO	3115-401	Amendment of Reserve to To comprise Kyarra Location 222 on Land Administration Miscellaneous Diagram 94638 and its area being reduced (recalculated) to 3.0251 ha.	H601810	20/11/2000		3.0251 Ha	Cue (100,000)
3688	Ballingup Lot	01985-2000-01RO	0000-000	Reserve Cancellation "Railway Purposes"	H604668	23/11/2000		0 sqm	
3870	Bridgetown Lot 25 on Land Administration Plan Bridgetown 26/2	01985-2000-01RO	0000-000	Reserve Cancellation "Resting Place for Travellers & Stock"	H604667	23/11/2000		0 sqm	
41354			3054-823	Revocation of Management Order () for the designated purpose of "".	H612353	04/12/2000		0 sqm	
41354	Ashburton Location 48 on Land Administration Reserve Diagram 853		3054-823	Change of Purpose to "Navigation, Communication, Meteorology & Survey."	H612352	04/12/2000		0 sqm	
44660	Sussex Location 5049 on Land Administration Miscellaneous Diagram 544 Sussex Location 5050 on Land Administration Miscellaneous Diagram 544 Sussex Location 5076 on Land Administration Miscellaneous Diagram 544		3087-4	Reserve Creation for the designated purpose of "National Park, Tourism, Navigation, Communication, Meteorology and Survey."	H612413	04/12/2000		0 sqm	
44665	Lyndon Location 225 on Land Administration Miscellaneous Diagram 541		3086-933	Reserve Creation for the designated purpose of "Navigation, Communication, Meteorology, Survey and Conservation."	H612447	04/12/2000		0 sqm	ONBLOW & JOLABI POINT
44666	Lyndon Location 230 on Land Administration Reserve Diagram 1435		3108-300	Reserve Creation for the designated purpose of "Conservation of Flora and Fauna".	H612448	04/12/2000		0 sqm	1:250 000
44667	Ashburton Location 183 on Land Administration Miscellaneous Diagram 553		3086-941	Reserve Creation for the designated purpose of "Navigation, Communication, Meteorology, Survey and Conservation."	H612452	04/12/2000		0 sqm	
44668	Ashburton Location 188 on Land Administration Reserve Diagram 1438		3108-299	Reserve Creation for the designated purpose of "Conservation of Flora and Fauna".	H612453	04/12/2000		0 sqm	
44673	Meda Location 28 on Land Administration Miscellaneous Diagram 539		3061-298	Reserve Creation for the designated purpose of "Navigation, Communication, Meteorology, Survey and Conservation."	H612383	04/12/2000		0 sqm	
44674	Meda Location 31 on Land Administration Miscellaneous Diagram 608		3107-596	Reserve Creation for the designated purpose of "Conservation of Flora and Fauna".	H612384	04/12/2000		0 sqm	
44675	Meda Location 37 on Land Administration Reserve Diagram 1433		3108-296	Reserve Creation for the designated purpose of "Conservation of Flora and Fauna".	H612386	04/12/2000		0 sqm	
44677	Marmdoc Location 13 on Land Administration Miscellaneous Diagram 551		3061-297	Reserve Creation for the designated purpose of "Navigation, Communication, Meteorology, Survey and Conservation."	H612349	04/12/2000		0 sqm	
44678	Marmdoc Location 14 on Land Administration Reserve Diagram 1434		3108-298	Reserve Creation for the designated purpose of "Conservation of Flora and Fauna".	H612398	04/12/2000		0 sqm	
44684	King Location 813 on Land Administration Diagram 92975		3107-792	Reserve Creation for the designated purpose of "Navigation, Communication, Meteorology and Survey."	H612281	04/12/2000		0 sqm	
44689	Broome Lot 3078 on Land Administration Miscellaneous Diagram 550		3086-977	Reserve Creation for the designated purpose of "Navigation, Communication, Meteorology, Survey and Conservation."	H612397	04/12/2000		0 sqm	

S(1) + NR

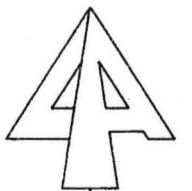
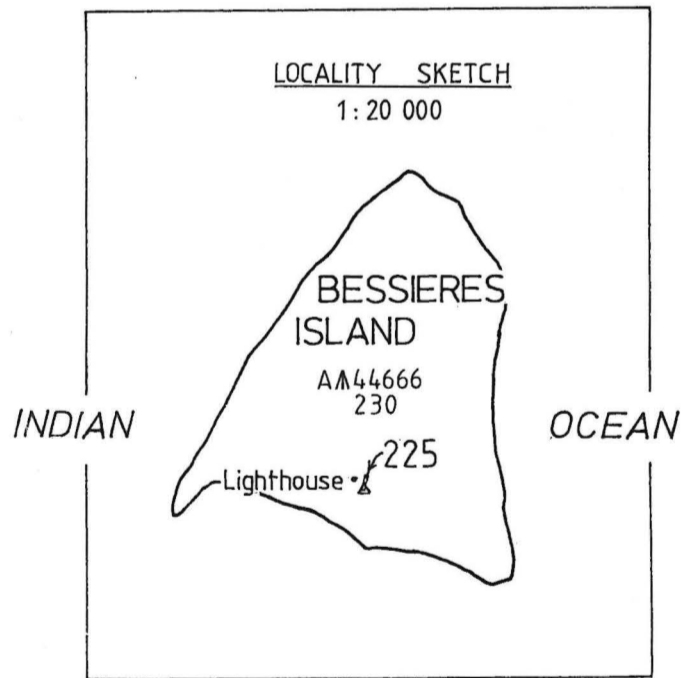
FORMERLY PART LOCATION 23

BESSIERES

ISLAND



AM44666
230
Reserve Dia 1435



IN ORDER FOR DEALINGS

Subject to
Revestment
Cp. 1245/272
M. J. James 1. 11. 00
 For Authorised Land Officer Date



LYNDON LOCATION 225 CREATED ON THIS DIAGRAM

Water lines on this diagram do not necessarily depict an exact cadastral boundary.

RESERVE No. 44665 AREA 360m ²		FILE No. 2083/996
Purpose Conservation and Lighthouse		SCALE All measurements in metres 1:500
DISTRICT, LYNDON	Gazetted Page	
Public Plan ONSLOW & JURABI POINT (250) (270,620)	Recorded on Public Plan	
SUBJECT TO SURVEY		Registered B.TAYLOR Date
AMENDMENTS		For Manager Statutory Services
Reference Page	Gazette Page Initials	Survey Index Plan ONSLOW & JURABI POINT (250)
Prepared by AUSLIG Date	DOC. H 612445 REVESTED E. M.	DEPT. OF LAND ADMINISTRATION MISCELLANEOUS DIAGRAM No. 541
Checked <u>Taylor</u> Date <u>6.6.96</u>	DOC. H 612447 AM 44665 CREATED E. M.	
Approved <u>M. J. James</u> Date <u>7. 2. 97.</u>		
Manager Statutory Services		